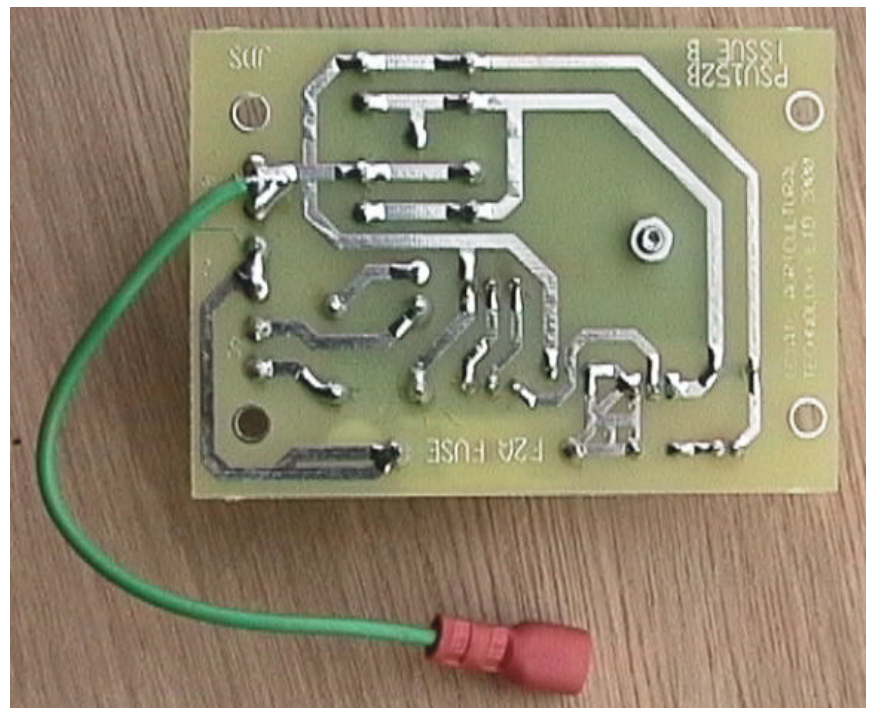
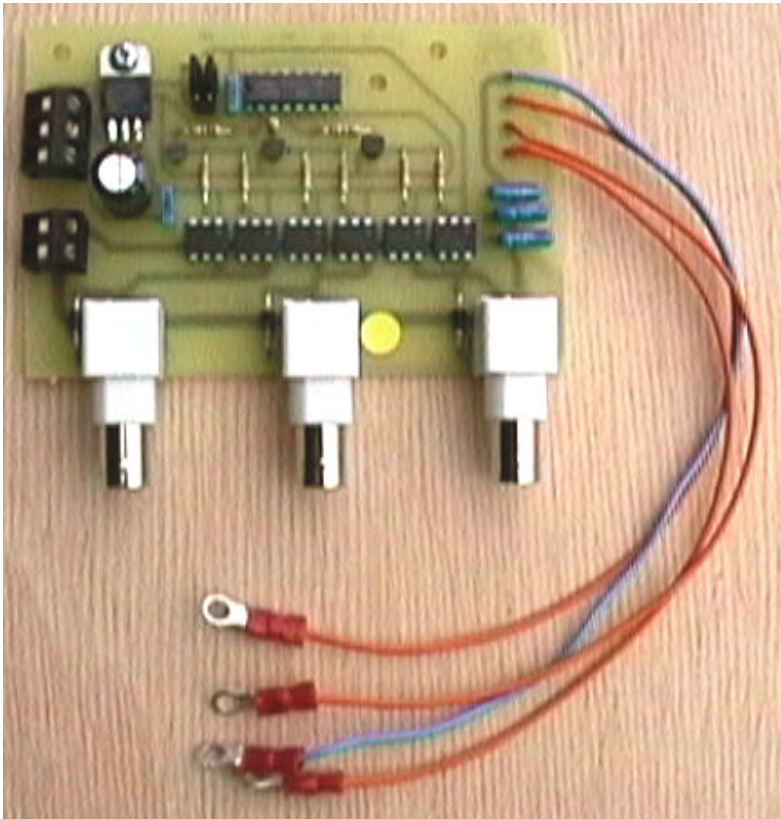


PSU152B
Power Supply PCB
Component side view

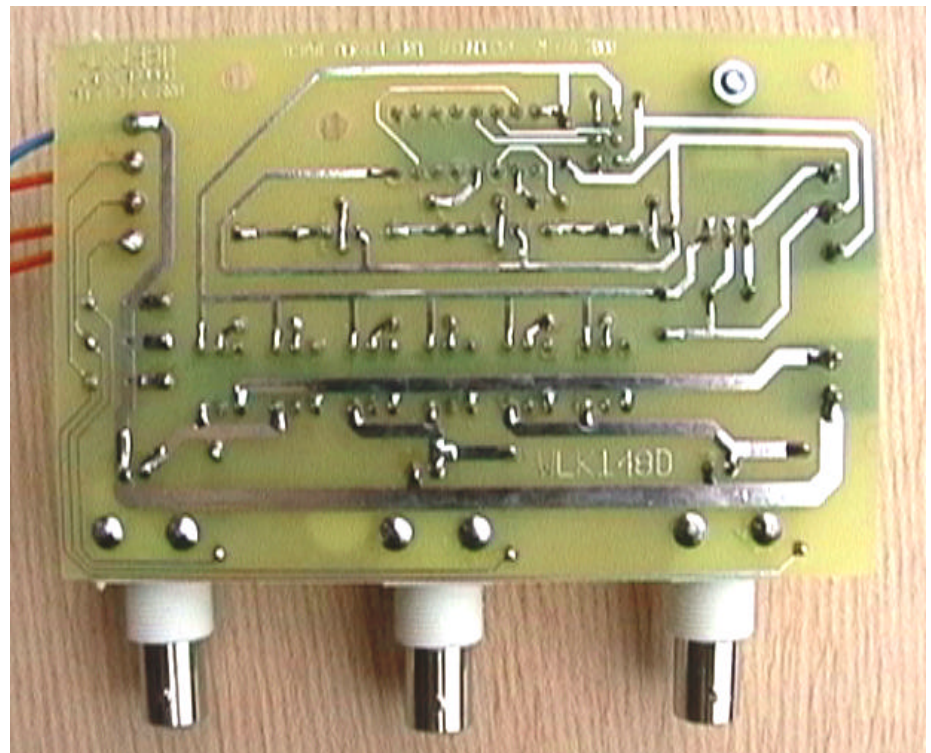
PSU152B
Power Supply PCB
Track side view

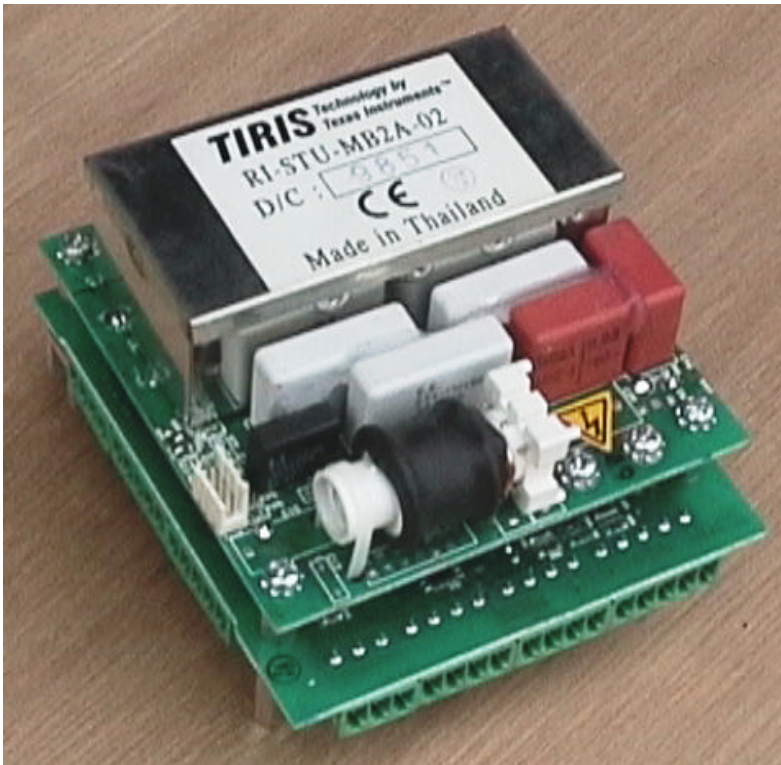




WLK148D
Multiplex PCB
Component side view

WLK148D
Multiplex PCB
Track side view





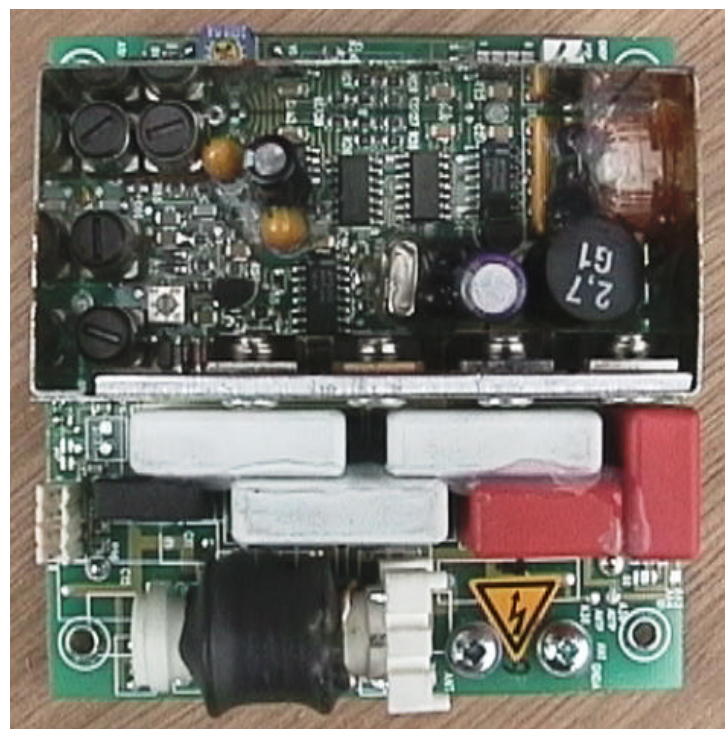
Texas Instruments
TIRIS Low frequency
half-duplex transponder
reader module

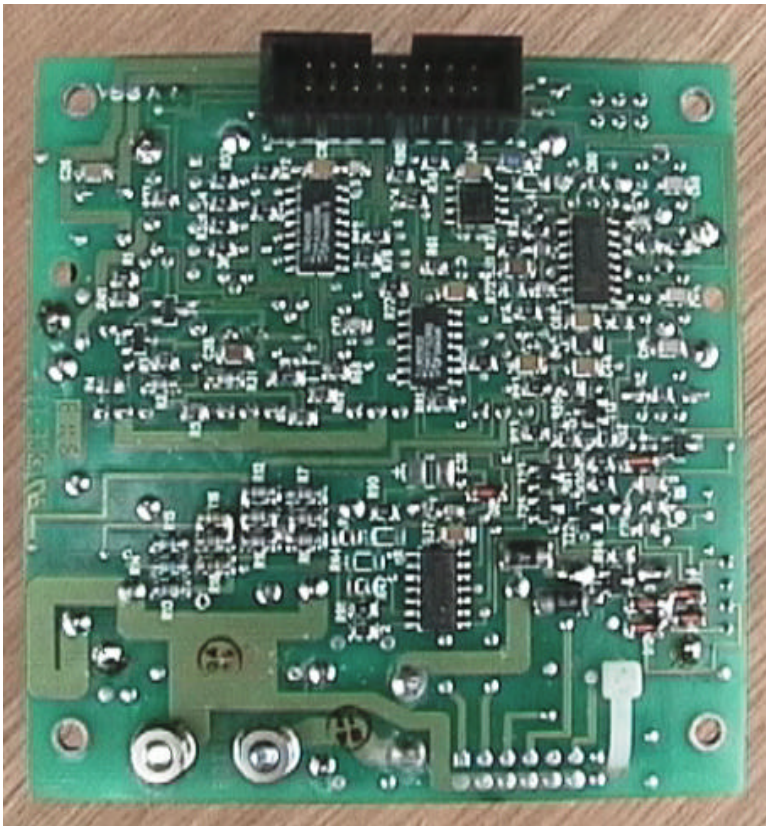
complete module - top view

comprises two pcbs:

RF module at top
and
Control module underneath

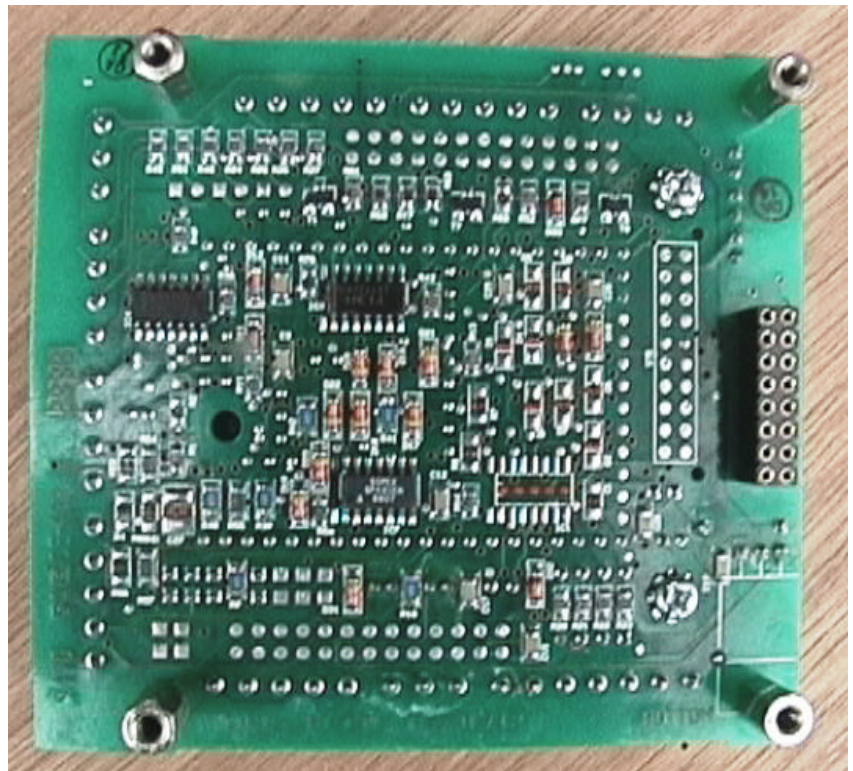
RF module
Top view with metal
shield removed

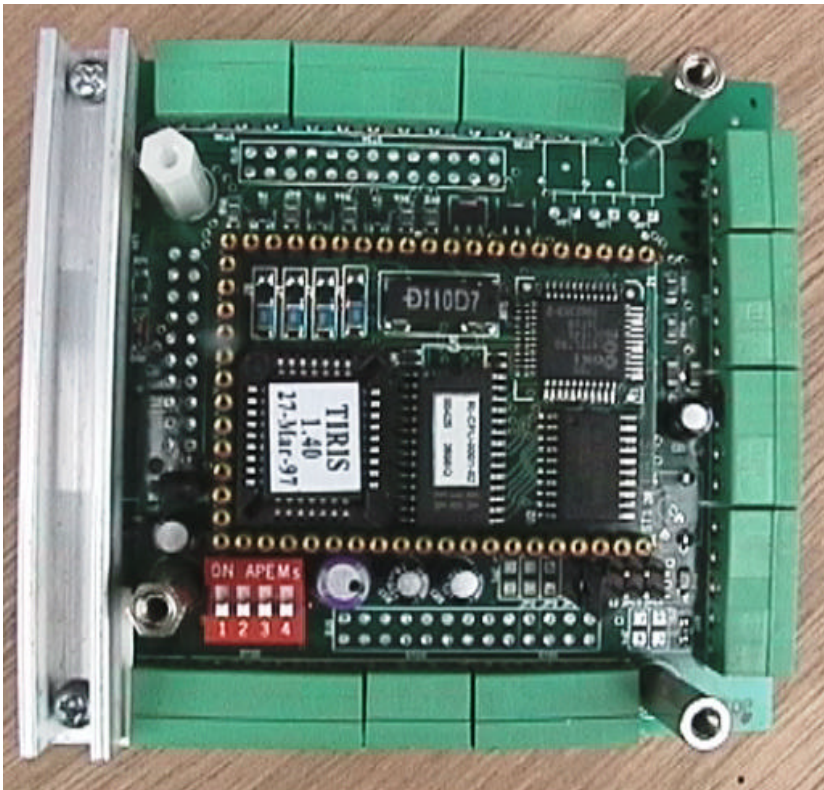




RF module
bottom view
with metal
shield removed

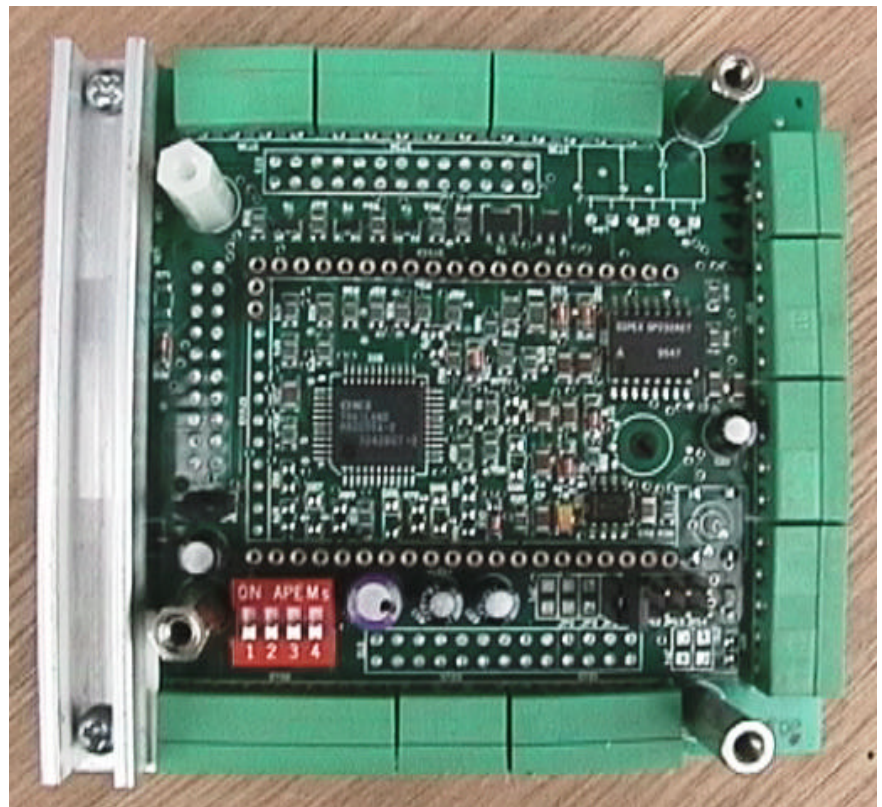
Control module
top view

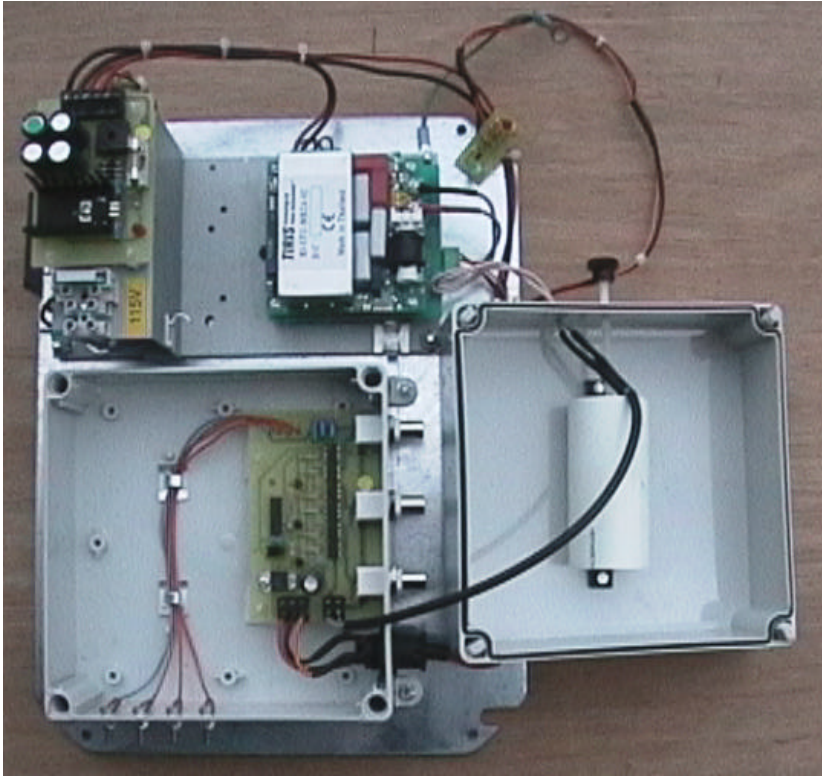




Control module
bottom view

Control module
bottom view
with software
PCB removed





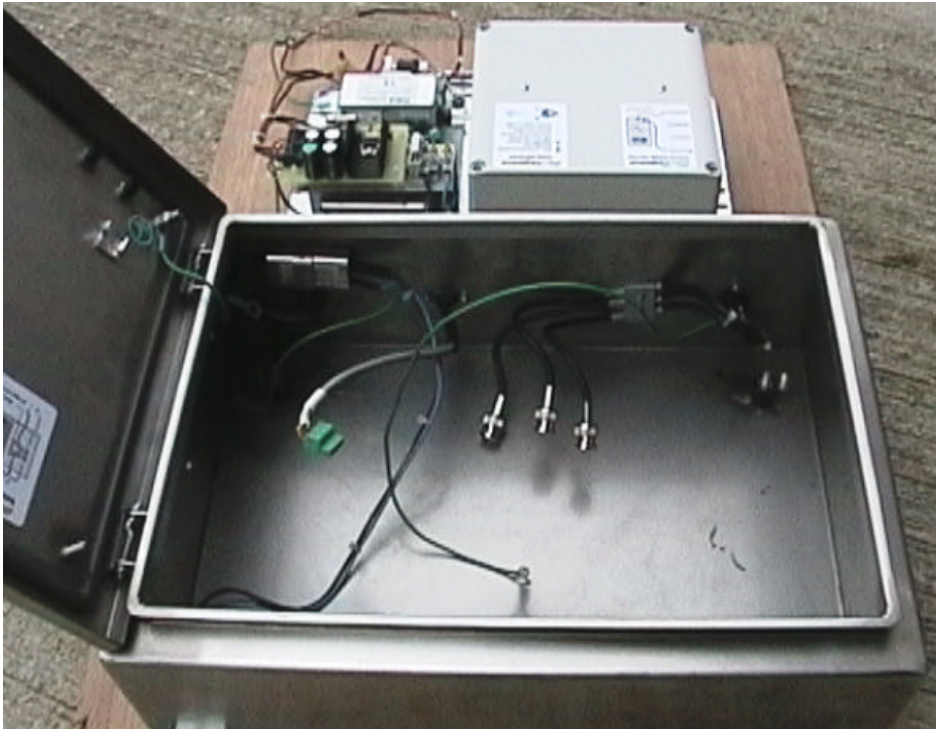
Complete control chassis with multiplex module lid removed showing tuning inductor and multiplex PCB at bottom

Complete control chassis top view with:

multiplex and tuning coil module on left

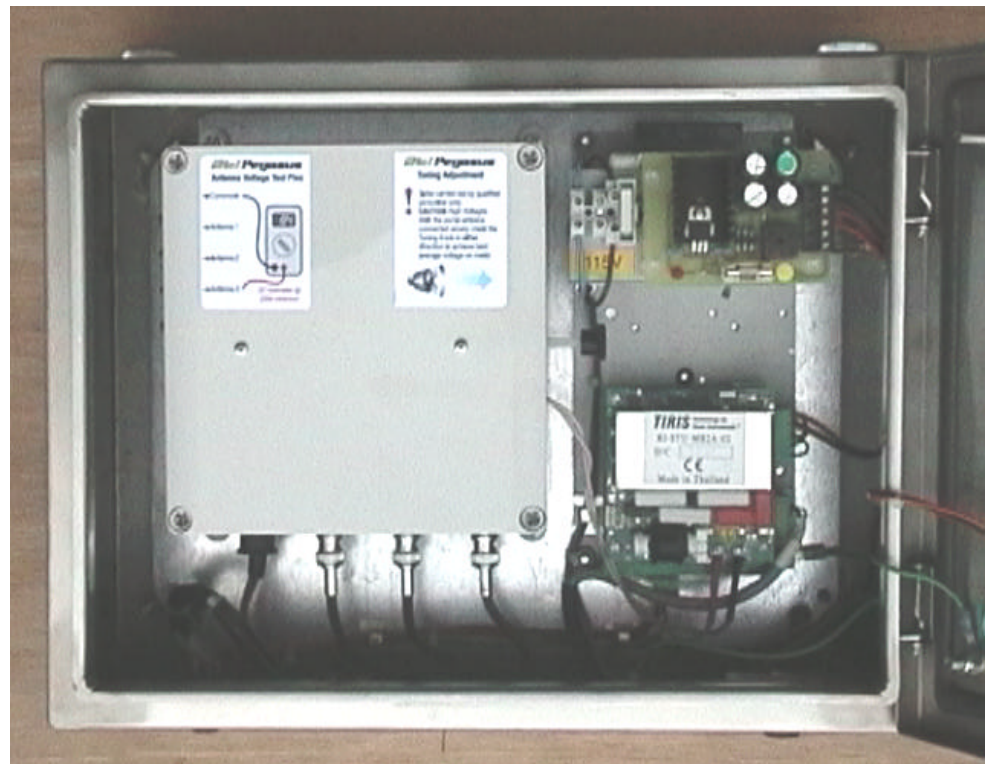
power supply and reader module on right

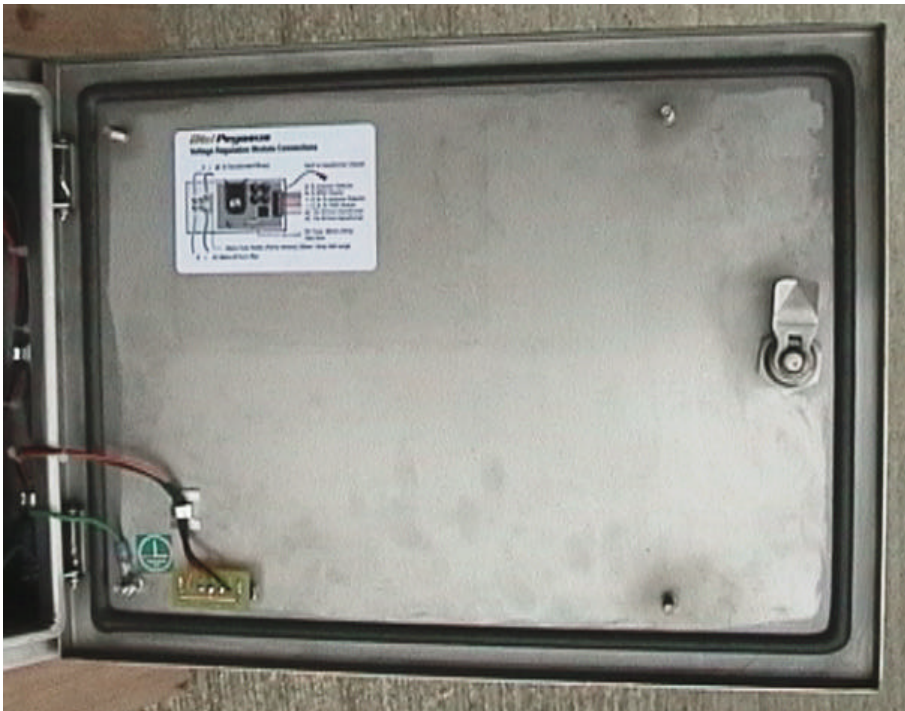




Control Box with
complete chassis
removed

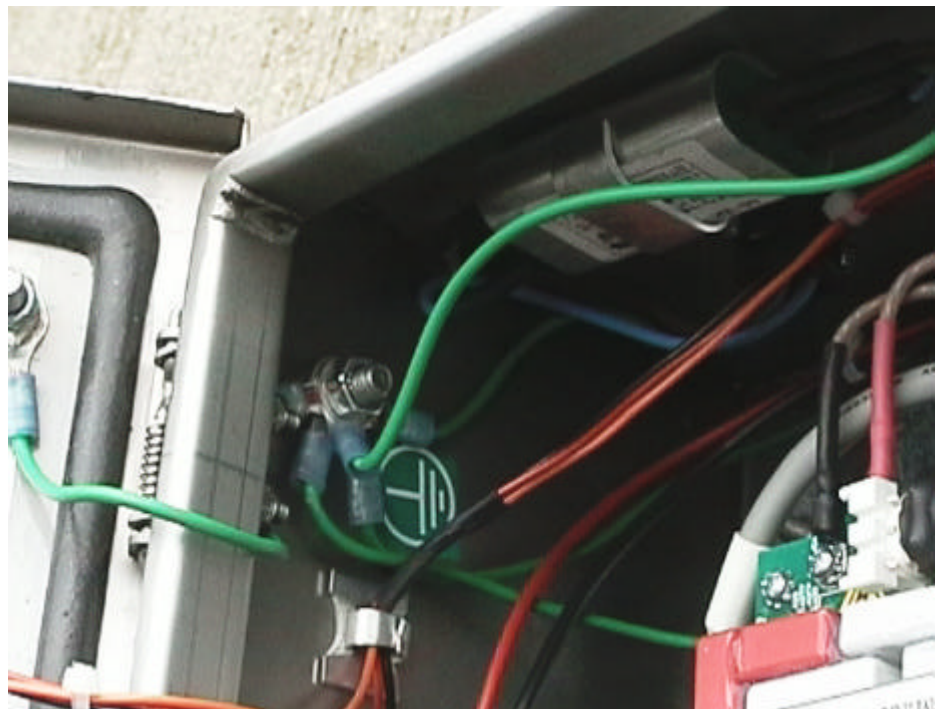
Control Box
Top view with
lid open





Control Box
Inside of lid
showing LED PCB

Control Box
Detail of earth
terminal next
to lid hinge





Antenna Wiring
showing
connections at
corner

Antenna wiring
showing capacitor
added for balancing

