



# 规格承认书

## SPECIFICATION FOR APPROVAL

日期 Date	2025/06/05
编号 File No	25060501
版本 Revision	1.0

客户  
CUSTOMER: 成都万创

客户料号  
CUSTOMER NO: YAA003R005


品名  
PART NAME: 2.4GHz Antenna

供方料号  
SUPPLIER NO: YJS01.042.054.101A

送样日期Date:

送样数量Q'TY:

客户确认CUSTOMER APPROVED BY		
APPROVAL	CHIEF	SUPERVISOR

供方确认 SUPPLIER SIGNATURE		
APPROVAL	CHECK	DESIGN
 ChenGuoqiang	XieLi	ChenXingyi

YJ-RD-F04-A





## 承认书项目表

NO	内 容 (Contents)	页 数 (Number of Page)	页 码 (Page Code)
1	承认书封面 (Spec Cover)	1	1
2	承认书项目表 (Spec Item)	1	2
3	工程成品图 (Drawing)	1	3
4	天线规格 (Antenna Specification)	1	4
5	S参数测试 (S Parameter)	1	5
6	无源测试 (Passive Test)	3	6 ~ 8
7	方向图 (Radiation Pattern)	6	9 ~ 13
8	天线装配图 (Antenna Profile)	2	14 ~ 15
9	材质证明 (Material Certificate)	28	16 ~ 43
10	RoHS报告 (RoHS Test Report)	**	**
11	N/A	N/A	N/A
12	-	-	-
13	-	-	-





## 天线规格 Antenna Specification

Electrical Properties	
Frequency	2.4-2.5GHz 5.15-5.85GHz
Impedance	50 Ohm Nominal
V.S.W.R	2.0 Max@2.4-2.5GHz 10.5 Max@5.15-5.85GHz
Gain	2.0 dBi@2.4-2.5GHz 1.3 dBi@5.15-5.85GHz
Radiation	Omni-directional
Polarization	Linear
Physical Properties	
Connector	SMA Male
Cable Type	None
Cable Length	None
Cable Color	None
Operating Temp.	-40 ~ +85 °C
Storage Temp / Humidity	25±5°C / <70%

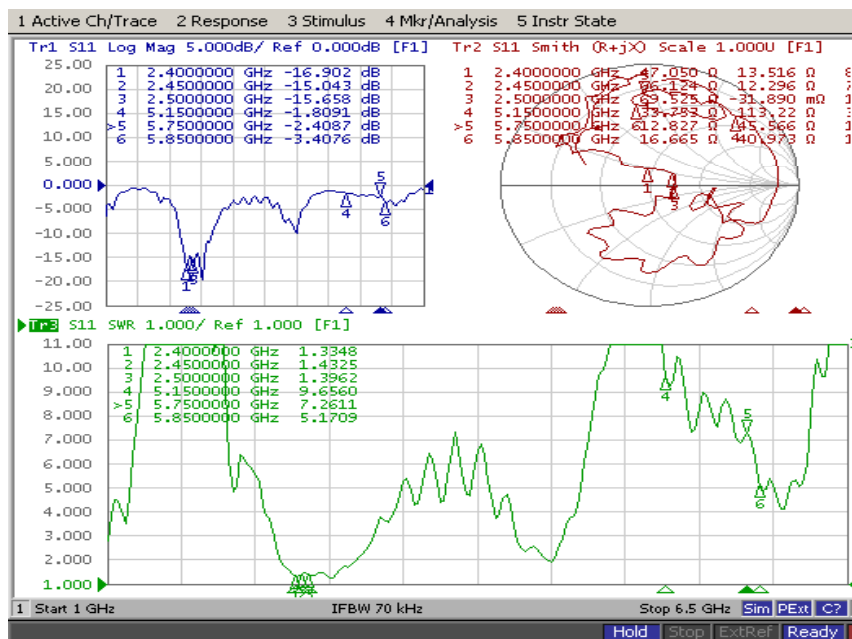




东莞市一佳电子通讯科技有限公司  
DONGGUAN YIJIA ELECTRONICS COMMUNICATION TECHNOLOGY CO., LTD

## Antenna Performance Test

*Agilent  
E5071C  
S  
Parameter  
Test //  
WiFi  
Antenna*



东莞市长安镇沙头社区木鱼路59号 Tel:0769-82586086 Fax:0769-82586086



Passive Test For WiFi Antenna(2.4G)

Freq (MHz)	Effi (%)	Effi (dB)	Gain (dBi)
2400	77.7	-1.1	2.0
2410	77.8	-1.1	2.0
2420	78.5	-1.1	1.9
2430	79.9	-1.0	1.9
2440	78.5	-1.1	1.7
2450	78.3	-1.1	1.7
2460	75.6	-1.2	1.5
2470	73.1	-1.4	1.4
2480	71.3	-1.5	1.3
2490	69.5	-1.6	1.2
2500	68.8	-1.6	1.1





Passive Test For WiFi Antenna(5.8G)

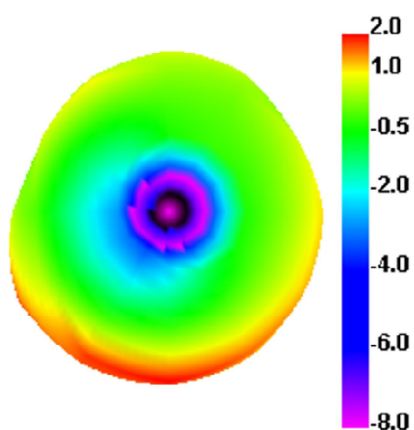
Freq (MHz)	Effi (%)	Effi (dB)	Gain (dBi)
5150	28.9	-5.4	-1.3
5200	30.0	-5.2	-0.5
5250	28.9	-5.4	-0.4
5300	30.8	-5.1	0.5
5350	32.2	-4.9	0.7
5400	32.2	-4.9	0.7
5450	35.4	-4.5	1.3
5500	29.3	-5.3	0.1
5550	24.8	-6.1	-0.9
5600	24.1	-6.2	-2.4
5650	23.6	-6.3	-3.5
5700	24.6	-6.1	-3.8
5750	25.3	-6.0	-3.1
5800	25.4	-6.0	-2.7
5850	24.6	-6.1	-3.1



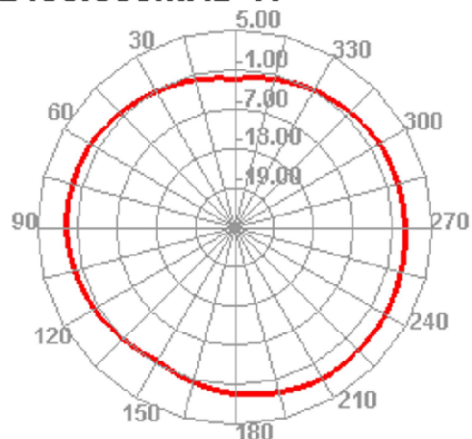


## Radiation Pattern For WiFi Antenna (2400MHz)

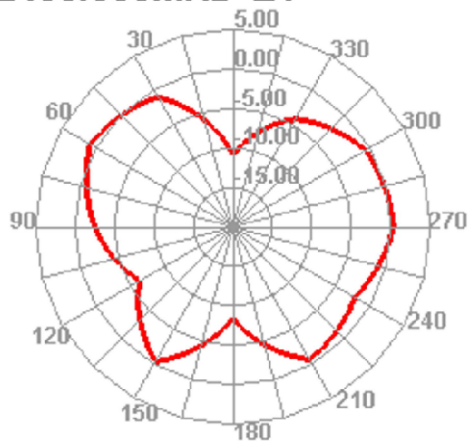
2400.000MHz



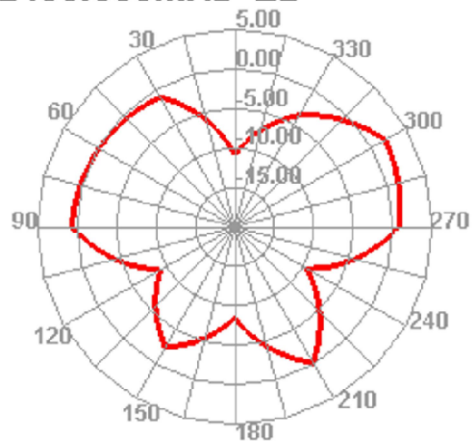
2400.000MHz H



2400.000MHz E1



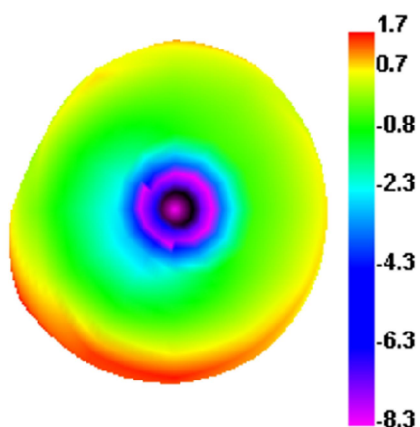
2400.000MHz E2



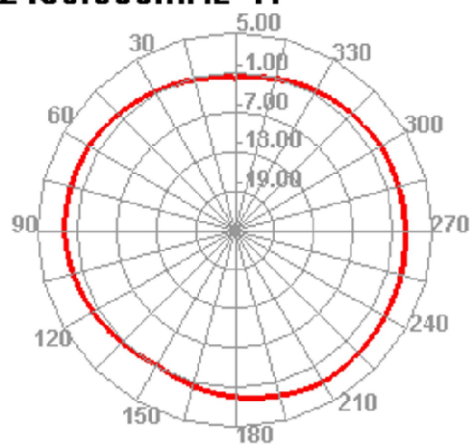


## Radiation Pattern For WiFi Antenna (2450MHz)

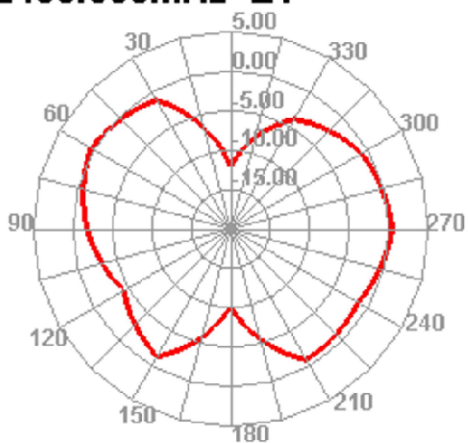
2450.000MHz



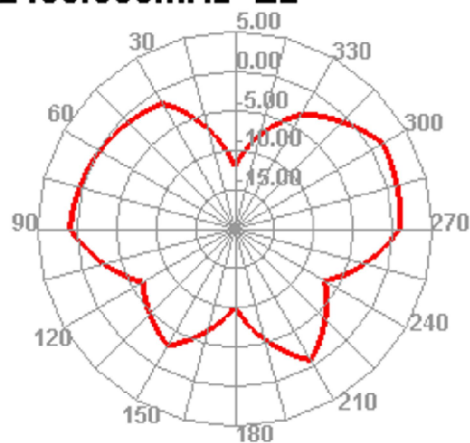
2450.000MHz H



2450.000MHz E1



2450.000MHz E2

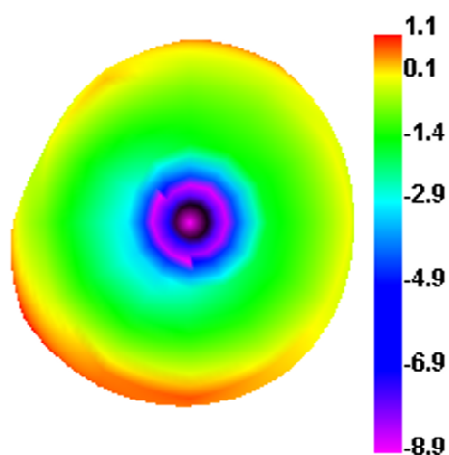




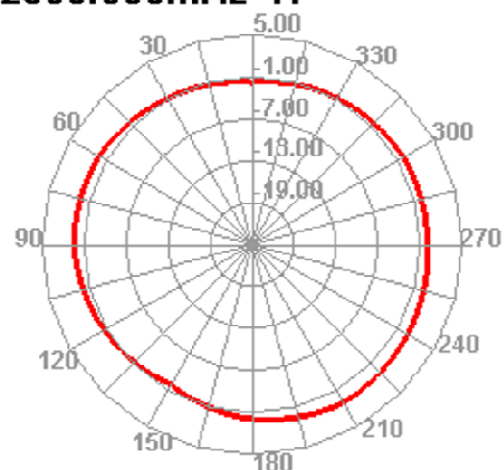


## Radiation Pattern For WiFi Antenna (2500MHz)

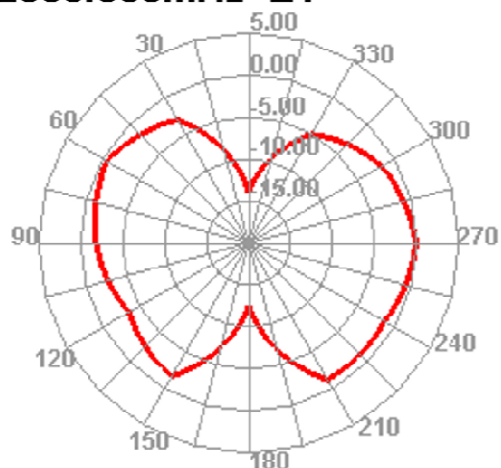
2500.000MHz



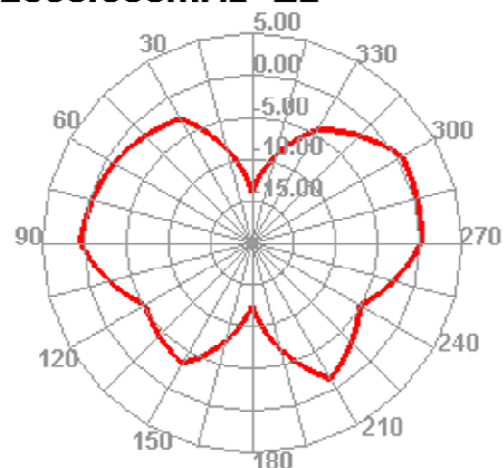
2500.000MHz H



2500.000MHz E1



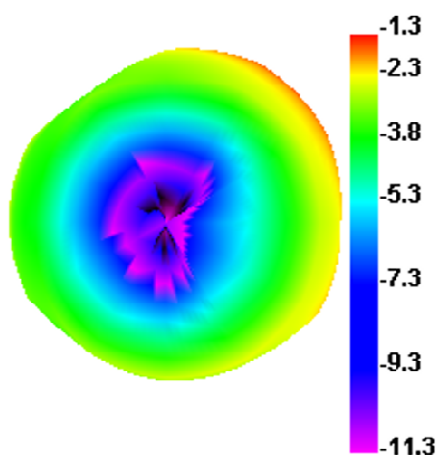
2500.000MHz E2



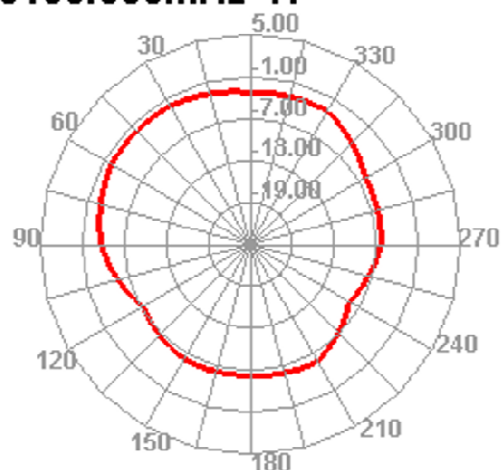


## Radiation Pattern For WiFi Antenna (5150MHz)

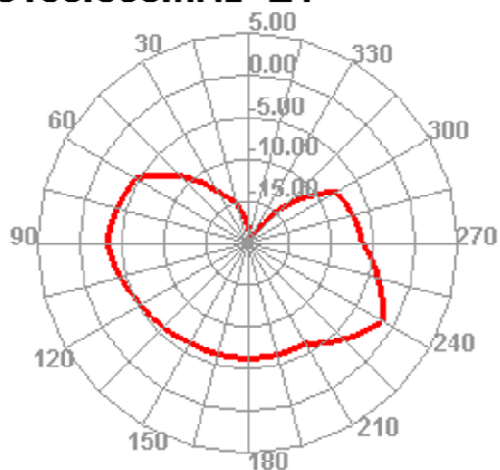
5150.000MHz



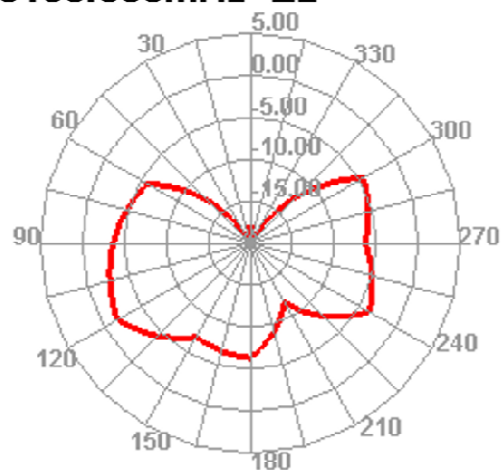
5150.000MHz H



5150.000MHz E1



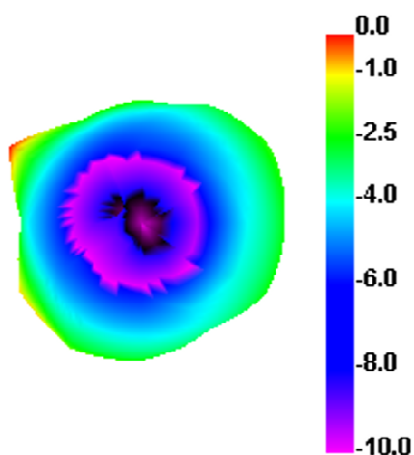
5150.000MHz E2



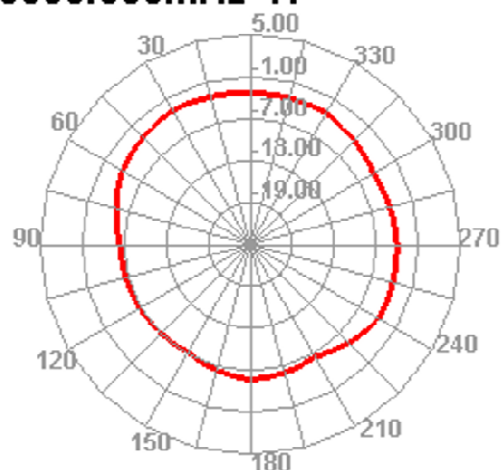


## Radiation Pattern For WiFi Antenna (5500MHz)

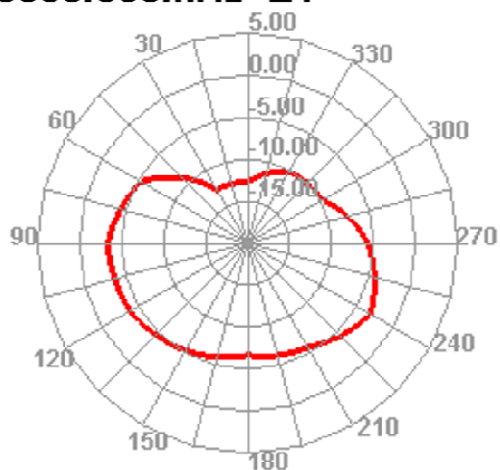
5500.000MHz



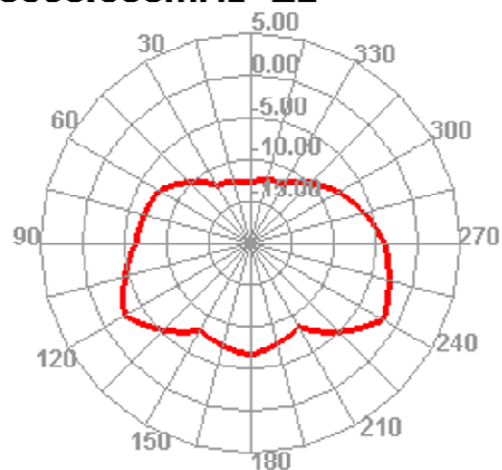
5500.000MHz H



5500.000MHz E1



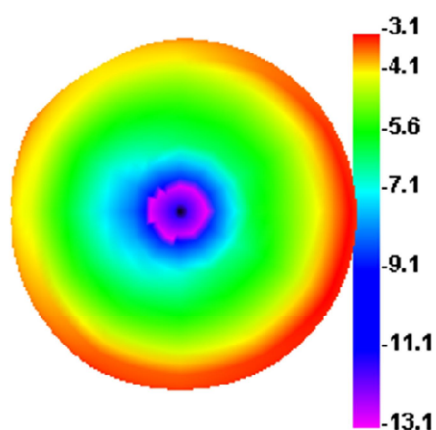
5500.000MHz E2



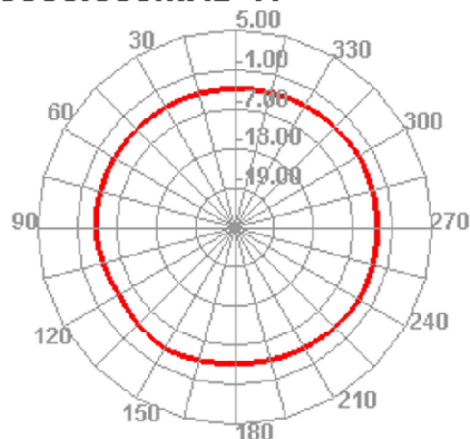


## Radiation Pattern For WiFi Antenna (5850MHz)

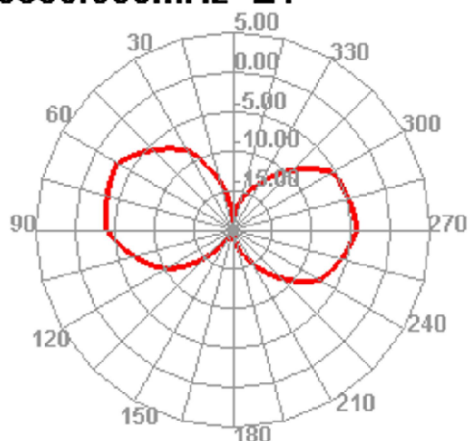
5850.000MHz



5850.000MHz H



5850.000MHz E1



5850.000MHz E2

