

DIGITAL AUDIO PLAYER

ORC-250

User Manual

CONTENTS

@ PREPARATION

- Feature
- Checking parts
- Names and functions of ORC-250
- LCD display panel

@ INSTALLATION AND USE

- Turning on/off the power
- Setting the modes
- Playing back digital music/voice files
- Adjusting the volume
- Searching music/voice file
- Setting the section repeating function
- Recording voice
- Tuning FM Frequency
- Memorizing FM Frequency
- Listening Memorized FM channel
- Button table

@ APPLICATION

- Setting the menu
- Setting the repeat function
- Setting the equalizer function
- Managing files
- Setting the logo
- Setting display function
- Display the file information
- Setting the language
- Menu table

@ COMPUTER CONNCETION

- Installing USB Device Driver for Windows98/SE
- Connecting ORC-250 to PC
- Managing files
- Formatting
- Separating ORC-250 from PC

@ LOGO EDITOR

- Installing logo editor

- Editing logo

- Installing logo

@ CUSTOMER SERVICE

- Product Specification

@ PREPARATION

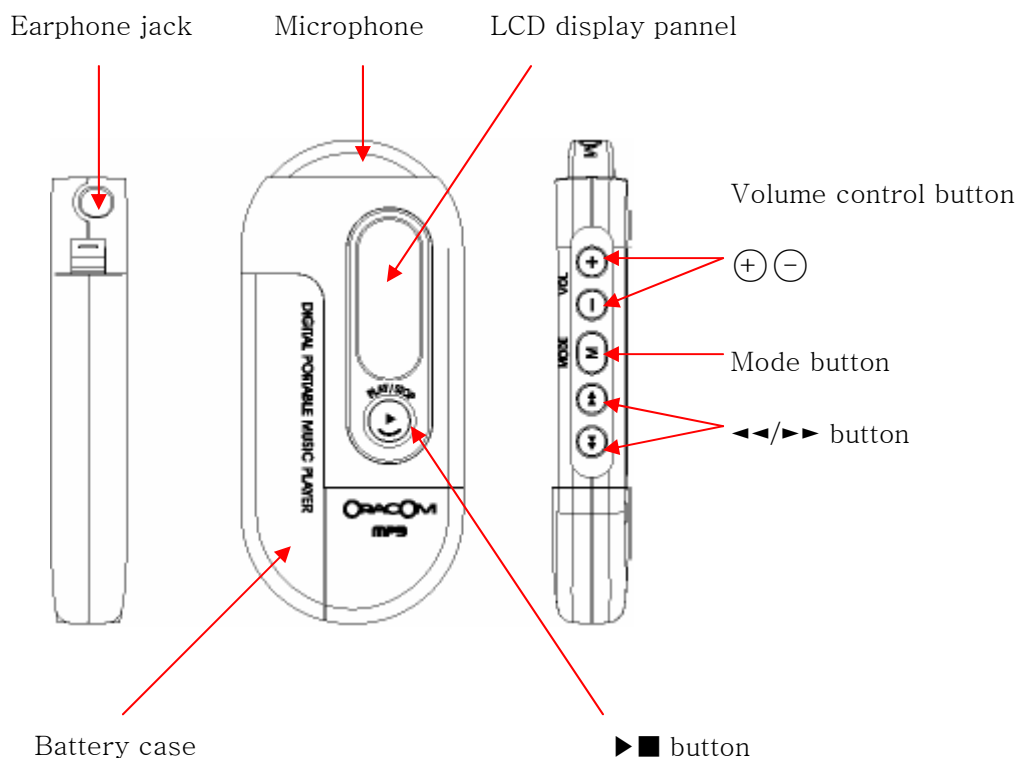
■ FEATURE

- Compact and slim design
- Plug-and-Play USB flash drive (USB driver is needed only for Windows 98/SE)
- MP3,WMA music file playback
- Voice recording function
- F/W upgradable
- 10 band Equalizer
- Controlling diverse menu
- User logo support
- High-speed USB communication
- Indigo blue backlight
- Diverse OS support for Windows, Mac and Linux
- FM tuner
- 10 channels of user defined FM station

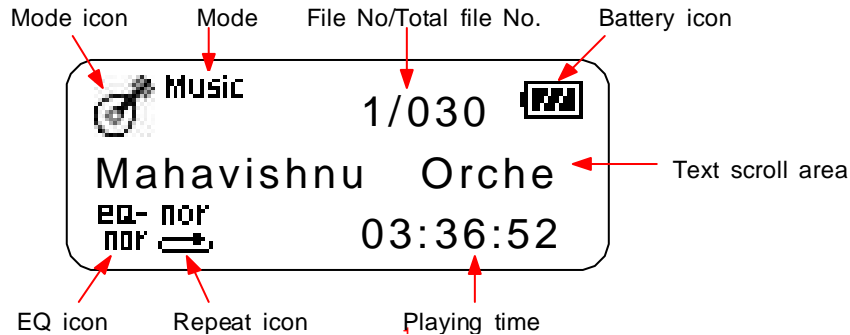
■ CHECKING PARTS

- Digital Audio Player (ORC-250)
- Stereo Earphone
- USB cable
- Installation CD
- One AAA size battery
- User manual

■ Names and functions of ORC-250



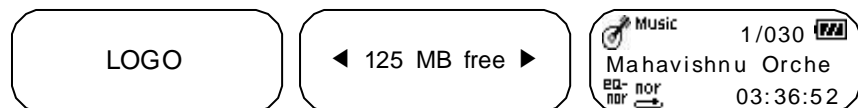
■ LCD display panel



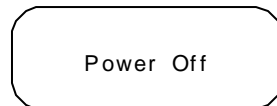
@ INSTALLATION AND USE

■ TURNING ON/OFF THE POWER

- ° Press the button on the ORC-250 to turn on the power.



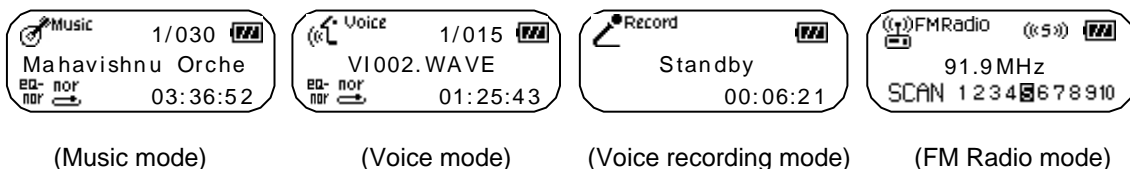
- ° Press the button on the ORC-250 for longer than 1 seconds to turn off the power.
If the unit is in the Stop mode for longer than 1 minute, it will power off automatically.



■ CONVERTING MODES

- ° Stop playback and press the mode button.

It converts like Music mode→Voice mode→Voice recording mode→FM Radio mode



■ PLAYING BACK DIGITAL MUSIC/VOICE FILES

- ° To playback - Press button on ORC-250 in stop mode, and digital music/voice will be played back.
- ° To stop - Press button on ORC-250 in playback mode, and digital music/voice will be stopped.

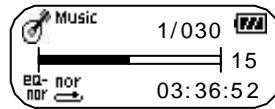
■ CONTROLLING VOLUME

- ° Control volume with volume control button(+ -)on ORC-250 player.

Volume can be controlled in the range from 0 to 30.

Press the button briefly to control the volume by one level.

Press and hold button to control continuously



■ SEARCHING MUSIC/VOICE FILE

- ° To move desired music/voice file

- Press the ◀◀ button to move one track backward in the playback or stop mode.

- Press the ▶▶ button to move one track forward in the playback or stop mode.

Note) If the ◀◀ button is pressed within 5 seconds after a song started,
the previous song will be repeated.

If the button is pressed 5 seconds after the song started,
the current song will be repeated.

(For VBR files, the previous song won't be played even if the button is pressed
within 5 seconds.)

For VBR files, the actually playtime may not match the playback time displayed on ORC-250.

* VBR(Variable Bit Rate) file: MP3 file which has multi compression rates applied


- ° To move the desired spot of the song during playback

Press the ◀◀ / ▶▶ button for longer than 1 second and release the ◀◀ / ▶▶
button

at the desired spot of the song.

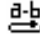
■ SETTING SECTION REPEATING FUNCTION

- ° To set a start point of section repeating

Press the mode button briefly at the start point of the desired section repeating during digital
music/voice playback. Then, the  icon brinks on the display panel.

- ° To set an end point of section repeating

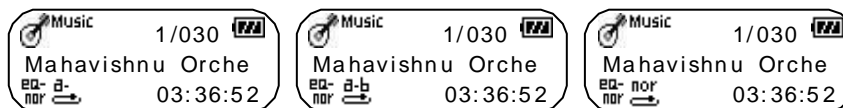
Press the mode button again briefly at the end point of the desired section repeating.

Then, it shows  Icon on the display panel and the section from A to B will be automatically
repeated.

- ° To cancel a section repeating

Press the mode button in the section repeating status.

Then, the section repeating is cancelled, and it is played back automatically.



■ RECORDING VOICE

- ° To record voice

Move the voice recording mode

Press button and recording starts.

- ° To finish voice recording

Press the button. Then, recording stops and voice file will be created.

Note) When memory is fully used, recording stops automatically and voice file will be created. Possible recording time shows in the low of the 'standby' text in accordance with memory capacity.

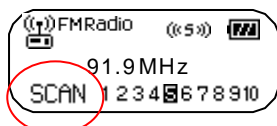


■ TUNING FM FREQUENCY

Press the Mode button to convert FM Radio mode

To tune FM frequency, move to SCAN mode by pressing Mode button more than one second.

To listen memorized channel of FM station, move to MEMORY mode by pressing Mode button more than one second.



Press or button to tune FM frequency by 100kHz step.

Press or button more than one second to find a next station available.

■ MEMORIZING FM FREQUENCY

Tune FM frequency and press button.

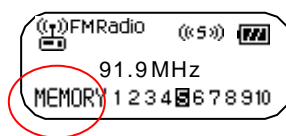
Select channel number by or button.

Press button again to memorize the FM frequency. (Maximum 10 channels can be momorized)

■ LISTENING MEMORIZED FM CHANNEL

Press Mode button more than one second to move to Memory mode.

Select channel number by or button.



■ BUTTON TABLE

Button	Former status	Push time	Operation
▷□	Power off	Briefly	Playback after power on
	Music/Voice playback	Briefly	Stop
	Music/Voice playback	Longer	Power off
	Recording		
	Stop		
	Stop (Music/Voice mode)	Briefly	Playback
	Stop (Recording mode)	Briefly	Start Voice Recording
	Recording	Briefly	Finish Voice Recording
	FM Radio SCAN mode	Briefly	Memorize current frequency
	Menu status	Briefly	To exit menu
▶▶	Playback	Briefly	Playback the next file
	Playback	Longer	Fast backward search in playback file
	FM Radio SCAN mode	Briefly	Tune frequency up (100kHz)
	FM Radio SCAN mode	Longer	Search next station available
	FM Radio MEMORY mode	Briefly	Select next channel memorized
	Stop	Briefly	To move the next file
◀◀	Playback	Briefly	Less than 5 sec. after beginning playback : Former file playback Longer than 5 sec. after beginning playback : File playback from the start
	Playback	Longer	Fast forward search in playback file
	FM Radio SCAN mode	Briefly	Tune frequency down (100kHz)
	FM Radio SCAN mode	Longer	Search previous station available
	FM Radio MEMORY mode	Briefly	Select previos channel memorized
	Stop	Briefly	To move the former file
+	Playback / FM Radio / Stop	Briefly/longer	Volume(↑)
	Menu state	Briefly	To move in the menu
-	Playback / FM Radio / Stop	Briefly/longer	Volume(↓)
	Menu state	Briefly	To move in the menu

MODE	Stop	Briefly	To change the mode (Music → Voice → Record)
	Playback	Briefly	To appoint the starting spot of the section repeating
	During setting section repeating	Briefly	To appoint the ending spot of the section repeating
	Status of setting section repeating	Briefly	To cancel the section repeating
	Playback / Stop	Longer	To move the menu mode
	Menu status	Briefly	To select the menu item
	FM Radio	Briefly	Convert mode to MUSIC mode
	FM Radio	Longer	Toggle SCAN mode <-> MEMORY mode

@ APPLICATION

■ SETTING THE MENU

- ° Press the mode button for longer than 1 sec., and it is converted to the menu mode.

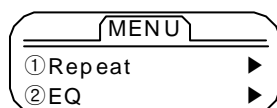
When selecting, use the mode button and when moving the different order, use + / - button.

- ° Pressing ▷□ button is to cancel the menu mode.

- Repeat: when selecting the repeating playback
- EQ: when using the equalizer function
- File: when deleting or formatting the music/voice file
- Logo: when selecting the logo
- Display: when controlling the display panel
- File info: when display the file information
- Language: when selecting the language
- Exit menu: when exiting the menu

Note) If there is no any input in the menu mode for 10 sec., it will be cancelled automatically.

Return is not the function in the menu mode. Select Return to exit the present mode.



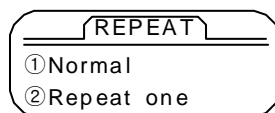
■ SETTING THE REPEAT FUNCTION

- ° Select Repeat in the menu mode.

Move the desired repeat mode with + / - button, and then select the mode button.

- Normal: when playing back 1 time each of collection in order

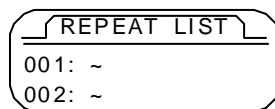
- Repeat one: when listening one file repeatedly
- Repeat all: when listening all files repeatedly
- Repeat list: when listening the file after making the list
- Shuffle: when listening the appointed file randomly
- Intro: when listening the first 10 sec. of all appointed files



- ° To make the repeat list

When the repeat list menu is selected, it shows the list control panel.

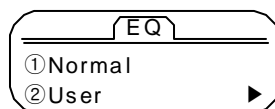
When selecting the desired music/voice file and making the list, it playbacks and repeats the appointed song only



■ SETTING THE EQUALIZER FUNCTION

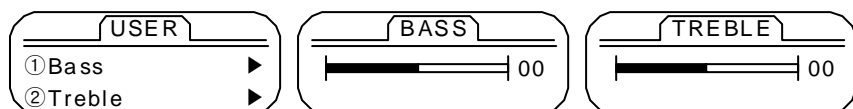
- ° Select EQ in the menu mode

Select the mode button after moving the desired the EQ mode with + / - button.



- Normal: Setting the 0dB base equalizer
- User: User can set the equalizer with user's taste

10 band : Setting the range from -8 to +8



■ MANAGING FILES

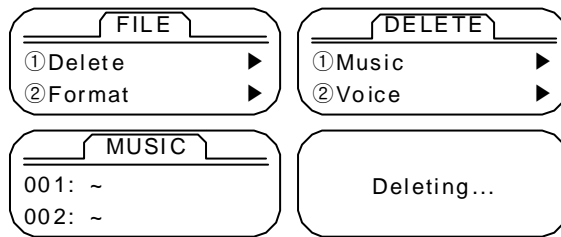
- ° Select the file in the menu mode.

Select with the mode button after moving the desired file mode with + / - button.

- ° To delete

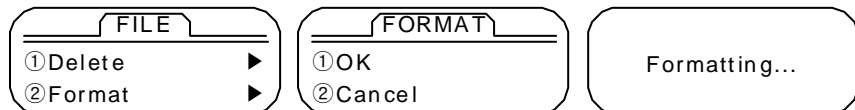
To select the place of the deleting file after selecting "delete".

Delete to select the mode button after moving the file that you want to delete.



° Format

All files of the memory are deleted if the format is selected.



Caution) All files are deleted when executing the format.

■ SETTING THE LOGO

° Logo can be selected in the display panel.

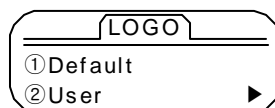
- Default: Oracom Logo
- User: User's Logo by using the logo editor

° Display logo

It can be selected if the logo is displayed always

On: Always

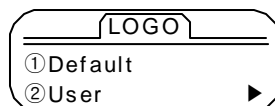
Off: When power on



■ SETTING DISPLAY FUNCTION

° Select display in the menu mode.

Select with the mode button after moving the desired display mode with + / - button

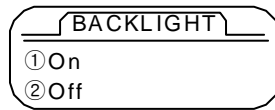


° Backlight

The backlight in the display panel can be controlled

1. On: Turned on always
2. Off: Turned on accordance with the time.
3. Lighting Time: The lasting time of backlight

Set the time to press + / - button.



Note) If Off is selected, battery is saved.

° Contrast

Contrast can be controlled in the display panel.

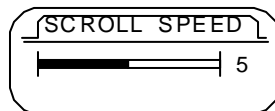
Control the contrast to press + / - button.



° Scroll speed

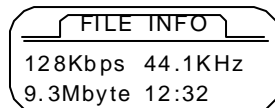
The text passing speed can be controlled in the display panel.

Control the contrast to press + / - button.



■ DISPLAY THE FILE INFORMATION

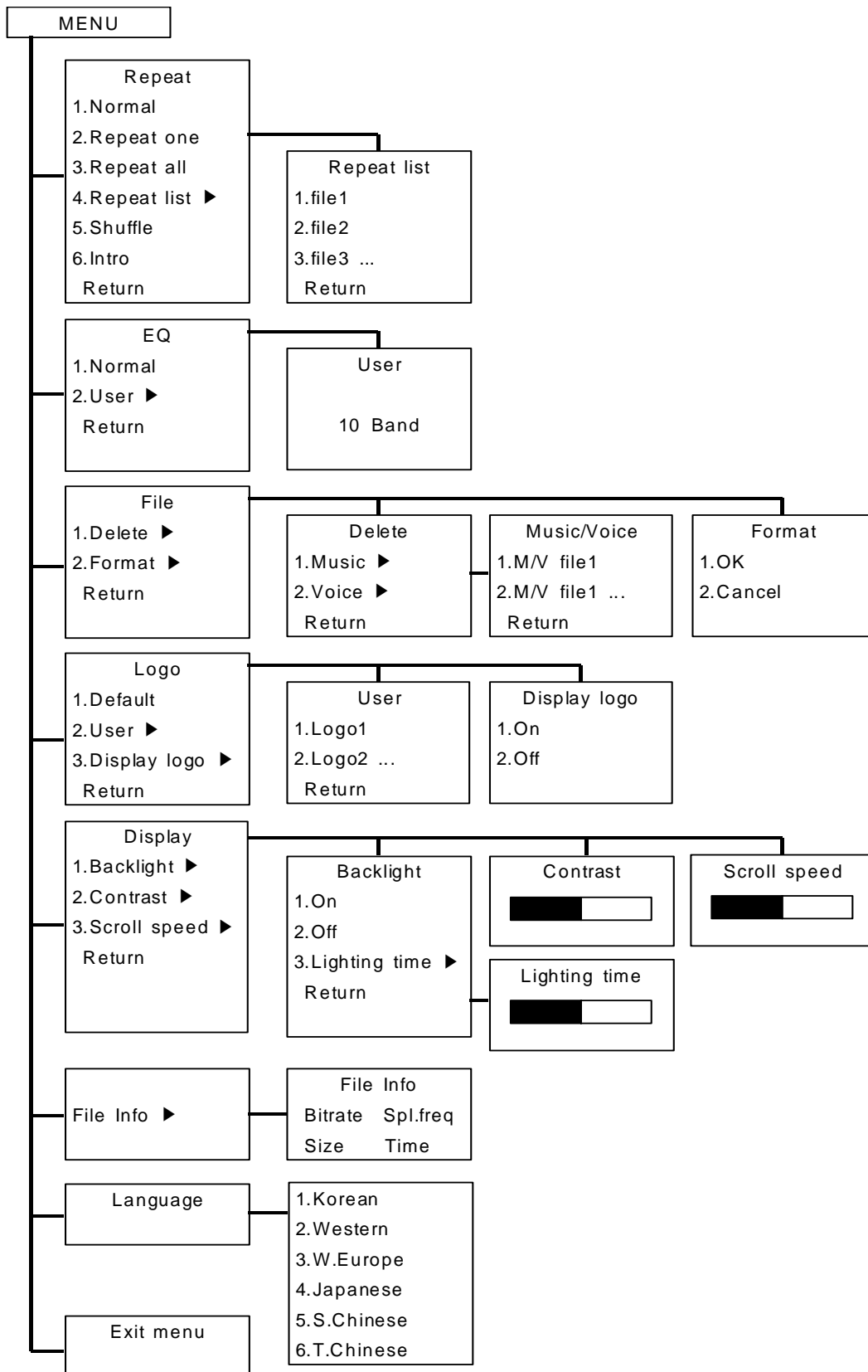
- Bitrate
- Sampling Frequency
- File Size
- Playing Time



■ SETTING THE LANGUAGE

- 1. Korean
- 2. Western
- 3. W.Europe
- 4. Japanese
- 5. S.Chinese (Simplified Chinese)
- 6. T.Chinese (Traditional Chinese)

■ MENU TABLE



@ COMPUTER CONNCTION

■ INSTALLING USB DEVICE DRIVER FOR WINDOWS98/SE

Note) Do not need to install the driver again after installation for use of windows98/SE

- ° Insert the installation CD supported to "CD-ROM driver" in PC and plug ORC-250 into PC's USB port.

Click on the next button when the pop-up diagram shows as below.



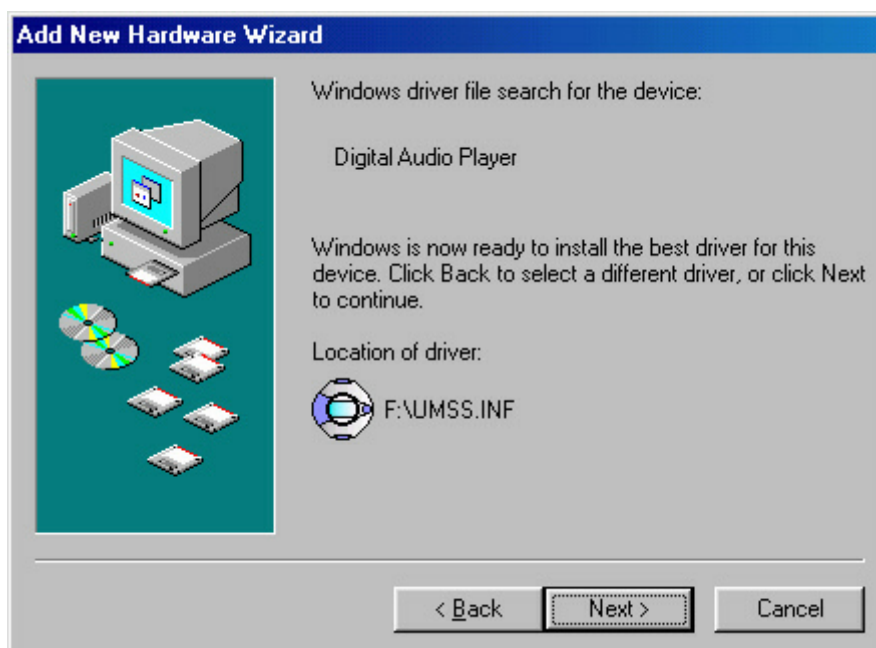
- ° Check "Search for the best driver for your device " and click on the next button when the pop-up diagram shows as below.



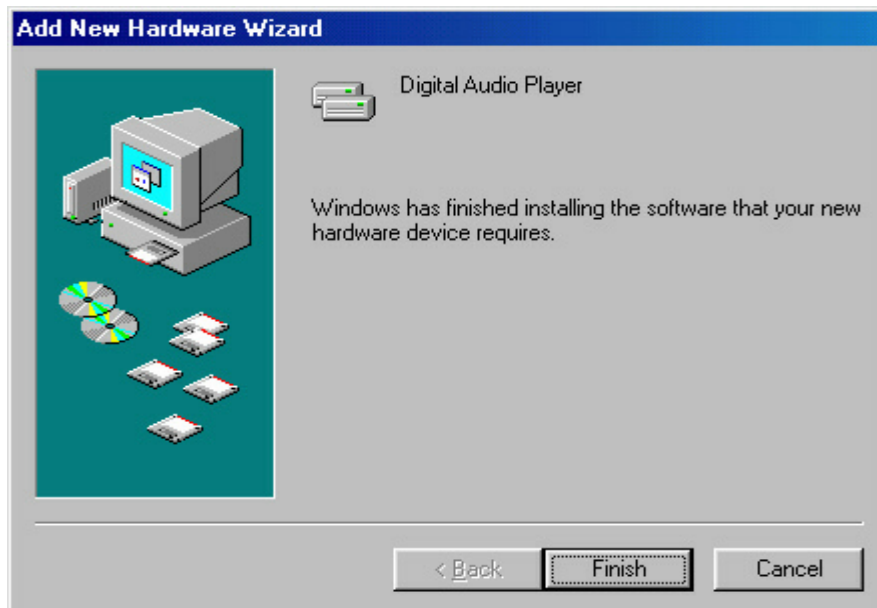
- ° Check "CD-ROM drive" and click on the next button when the pop-up diagram shows as below.



- ° Click on the next button when the pop-up diagram shows as below..



- ° Click on the button to finish the installation



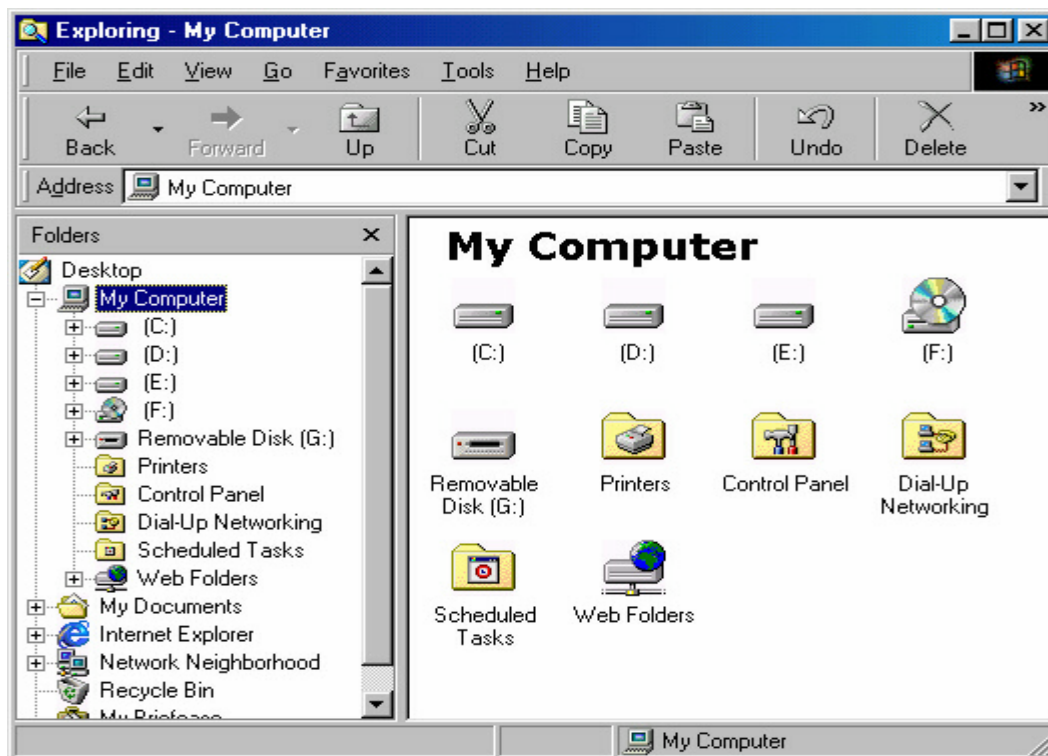
Now the driver has been installed into your system.

■ CONNECTING ORC-250 TO PC

- ° Turn on the PC power

Connect PC connection cable to USB port on the PC

"Removable Disk" folder is made in the My Computer of the Window Explore.



- The usage is the same as floppy disk or hard disk.

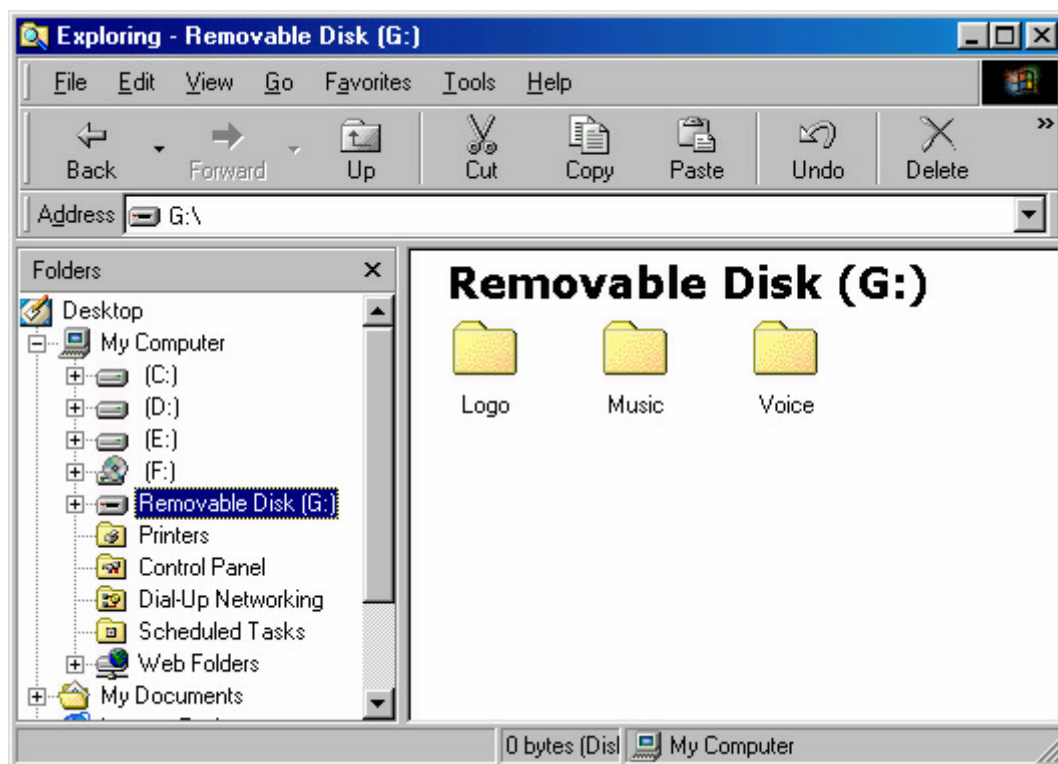
When ORC-250 is removed from PC, the Removable Disk is disappeared in the My Computer folder.

The message, Waiting shows in the display panel of ORC-250 while connecting to PC.

PC <-> Player
Standby

■ MANAGING FILES

- There are MUSIC, VOICE, and LOGO folder in the Removable disk and they are still existed even if formatted.



- To download the music file.

Save the music file in the MUSIC folder.

The display panel in ORC-250 shows as below while downloading the file.

PC <-> Player
▶

Caution) Do not remove ORC-250 from PC even if PC monitor says finished when PC<->Player (▶) is moving in the display panel of ORC-250.

Caution) If any other folders are used except MUSIC or any folders are made in the MUSIC folder for the music input, the music can not be played back.

Note) ORC-250 can be used as the computer memory device.

It is used as the floppy disk or hard disk.

- ° To make voice file

If the voice is recorded, the voice file is saved in the VOICE folder.

Caution) If any other folders are used except VOICE or any folders are made in the VOICE folder for the voice input, the voice can not be played back.

- ° To upload

It is used as the floppy disk or hard disk

- ° To download the logo

Save the logo made by the logo editor in the LOGO folder.

Caution) If any other folders are used except LOGO or any folders are made in the LOGO folder for the input of the logo file, the logo can not be displayed in the display panel.

■ FORMATTING

- ° Click on the right side of the mouse after selecting removable disk.

Select format in the menu and click on the "start".

- ° Use ORC-200M when formatting is completed because ORC-250 is formatted again after formatting in the PC.


Note) It is possible to format with the function, Menu->File->Format in ORC-250.

■ SEPARATING ORC-250 FROM PC

- ° Make sure if the data transfer is completed in the display panel of ORC-250 when separating ORC-250 from PC.

The data is damaged while the data is being transferring when separating ORC-250 from PC.

Caution) Do not separate ORC-250 from PC during PC<->Player (▶) is moving in the display panel of ORC-250.

Note) In Windows 2000, ME, and XP, the safe procedure will be to double click on the icon () located at the bottom right corner of your screen and follow instructions before removing.

@ LOGO EDITOR

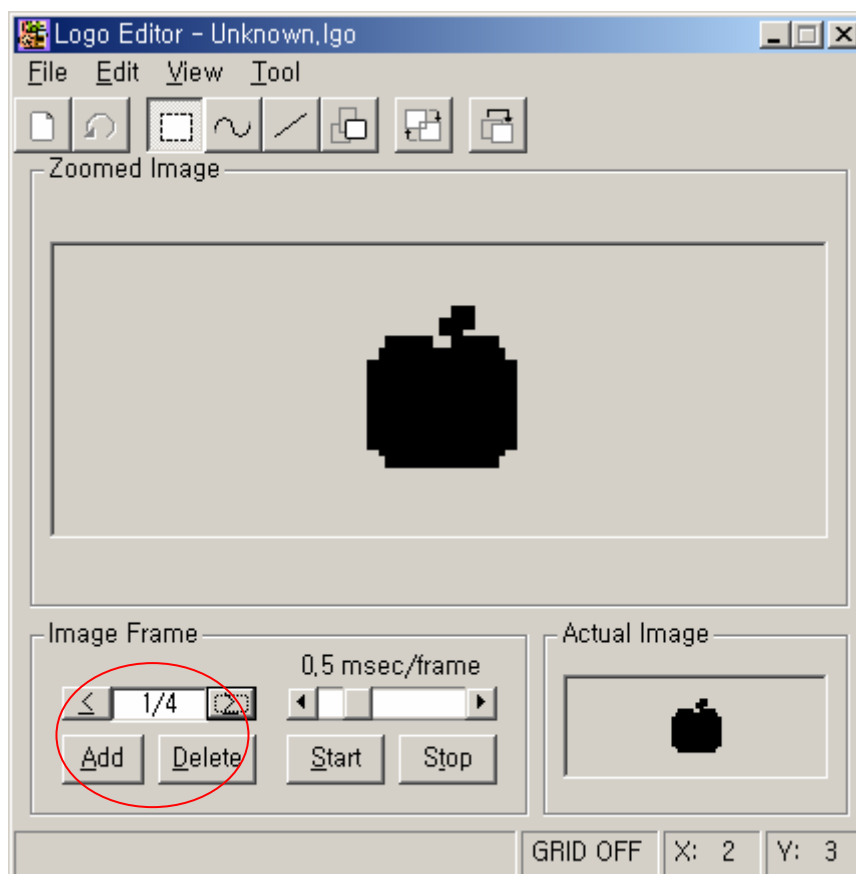
■ INSTALLING LOGO EDITOR

- ° Install the logo editor program supported from CD.

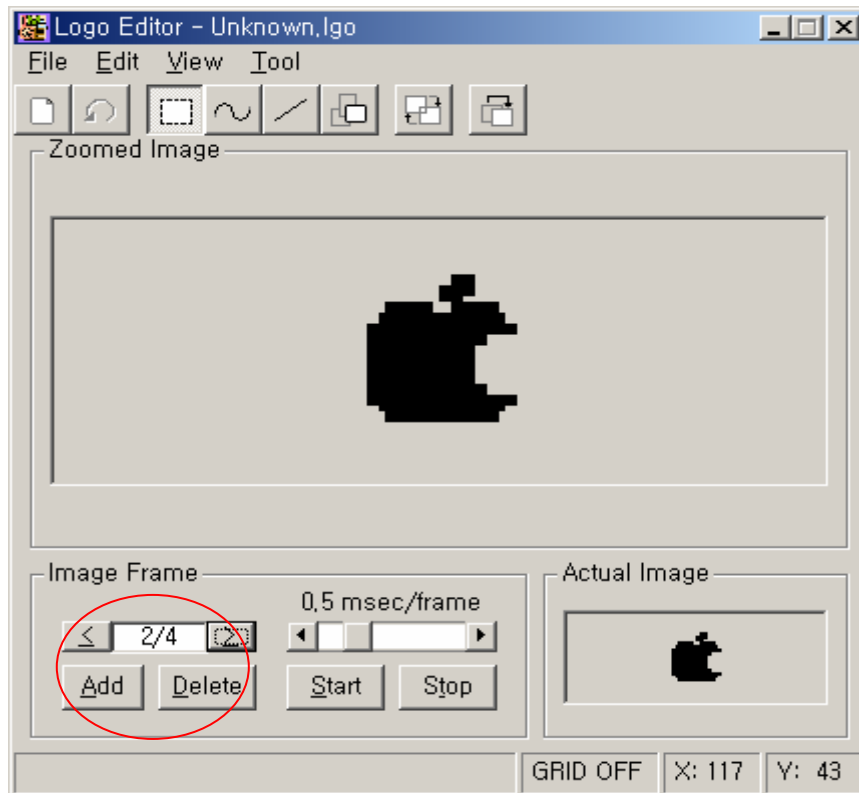
■ EDITING LOGO

- ° To use the frame function
 - What is the frame function?

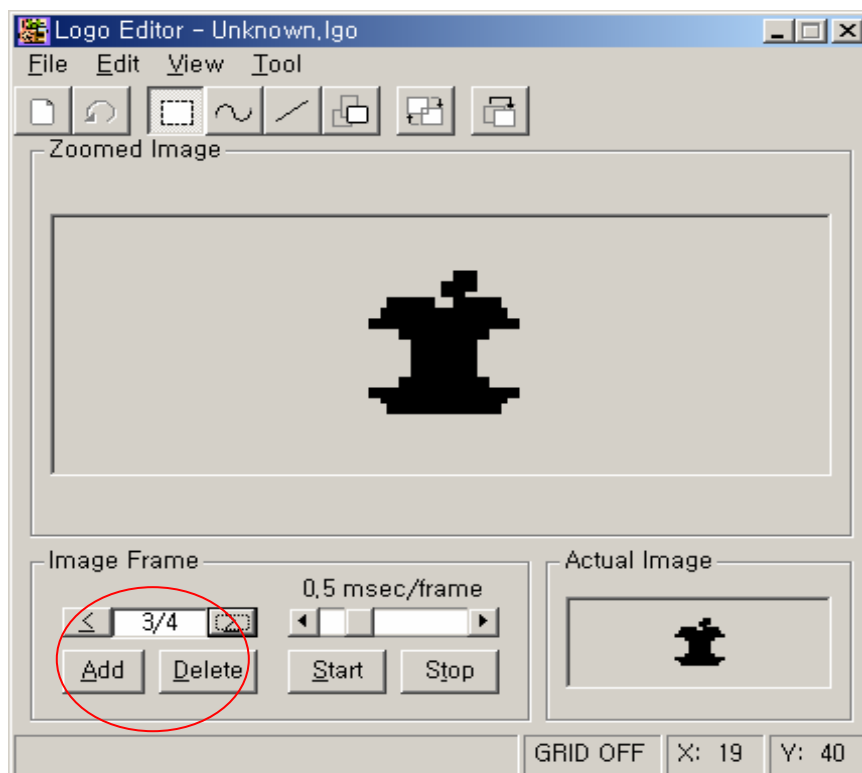
It is the logo editor function to make several pictures into one logo and to show the logo in the display panel continuously.
 - The number of pages displayed in the panel can be controlled accordance with the number of page in the frame control
- ° The example of the first page for frame



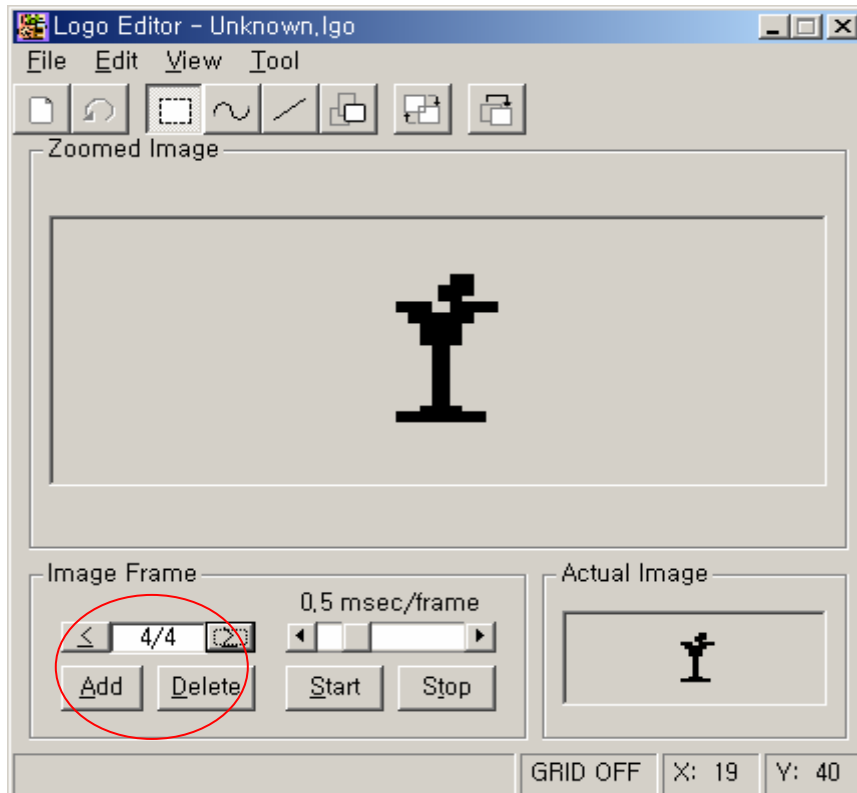
° The example of the second page for frame




° The example of the third page for frame



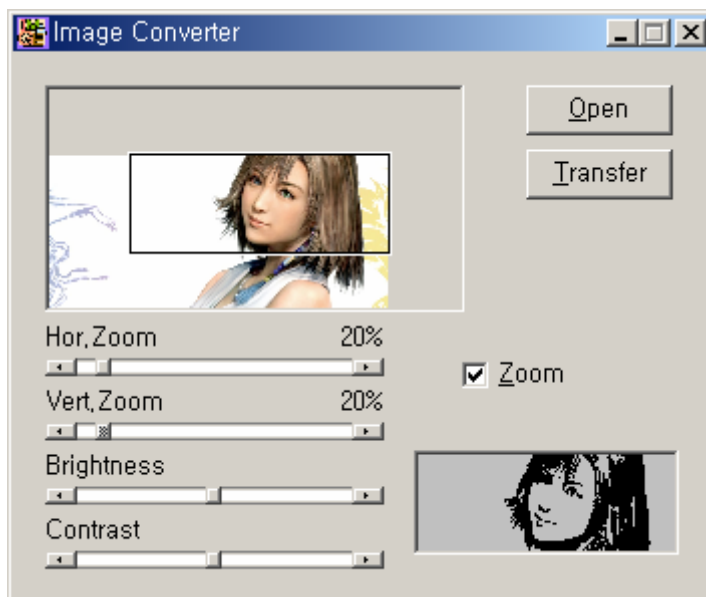
- The example of the fourth page for frame



- To import the picture file

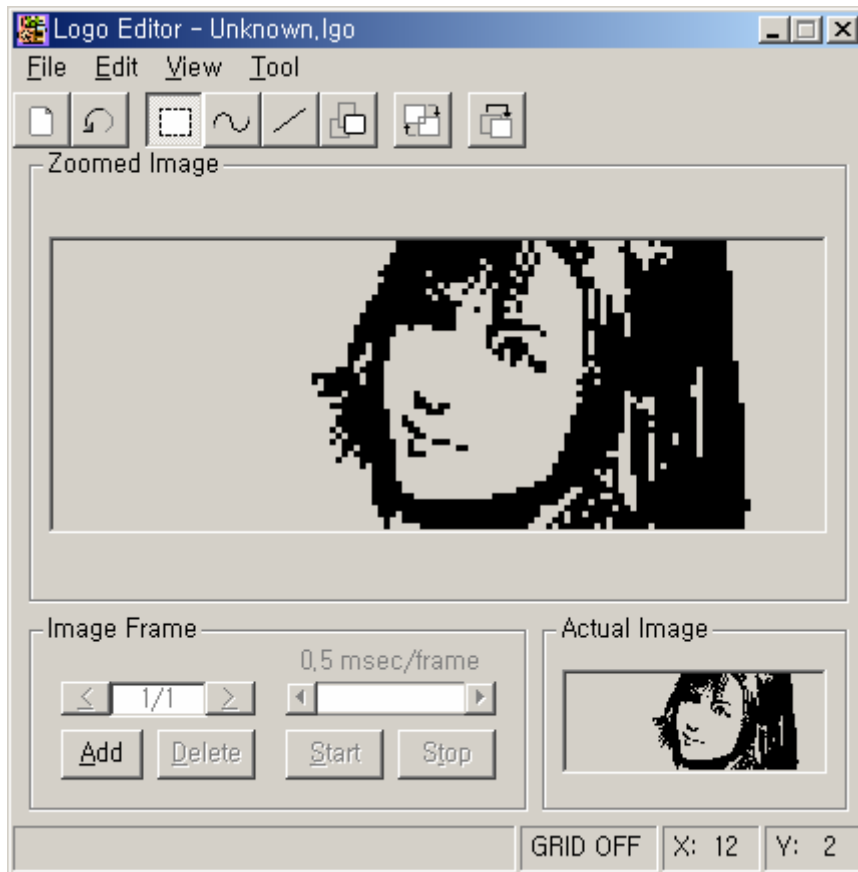
Select the Convert image icon () in the menu icon.

Select the desired picture file to click on the Open button as below.



Transfer the logo to the Logo Editor if the desired logo is made

The desired logo is made in the display panel of the Logo Editor as the sample above.



Save the logo file.

■ INSTALLING LOGO

- ° Save the logo file made by the logo editor in the LOGO folder.
- Caution)** If any other folders are used except LOGO or any folders are made in the LOGO folder for the input of the logo file, the logo can not be displayed in the display panel.
- ° Select Display->Logo->User in the menu mode and the display panel of ORC-250 shows your own logo

@ CUSTOMER SERVICE

■ PRODUCT SPECIFICATION

- ° Memory Capacity: 64/128/256/512MB built in memory
- ° Communication Method: Supporting USB 1.1(Plug & Play)
- ° Earphone Output Power: 5.0mW / 16Ω
- ° S/N, THD: 80dB / 0.1% (with 'A' filter)
- ° Output Frequency Range: 20Hz ~ 20KHz
- ° Operating temperature: 0 ~ 40C
- ° Battery: 1 x AAA size
- ° Supporting OS: Windows98/SE,ME,2000,XP, Mac 8.6 or higher and Linux kernel 2.4.0 or higher.
- ° Case: plastic
- ° Dimension: 39 x 86 x 13.2mm
- ° Weight: 32g (Without battery)

NOTE: This equipment has been tested and found to comply with the limits for a Class B digital device, pursuant to Part 15 of the FCC Rules. These limits are designed to provide reasonable protection against harmful interference in a residential installation. This equipment generates, uses and can radiate radio frequency energy and, if not installed and used in accordance with the instructions, may cause harmful interference to radio communications.

However, there is no guarantee that interference will not occur in a particular installation. If this equipment does cause harmful interference to radio or television reception, which can be determined by turning the equipment off and on, the user is encouraged to try to correct the interference by one or more of the following measures:

- - Reorient or relocate the receiving antenna.
- - Increase the separation between the equipment and receiver.
- - Connect the equipment into an outlet on a circuit different from that to which the receiver is connected.
- - Consult the dealer or an experienced radio/TV technician for help.

THIS DEVICE COMPLIES WITH PART 15 OF THE FCC RULES.

OPERATION IS SUBJECT TO THE FOLLOWING TWO CONDITIONS:

(1) THIS DEVICE MAY NOT CAUSE HARMFUL INTERFERENCE, AND

(2) THIS DEVICE MUST ACCEPT ANY INTERFERENCE RECEIVED,
INCLUDING INTERFERENCE THAT MAY CAUSE UNDESIRE OPERATION

THE MANUFACTURER IS NOT RESPONSIBLE FOR ANY RADIO OR TV INTERFERENCE CAUSED UNAUTHORIZED MODIFICATIONS TO THIS EQUIPMENT. SUCH MODIFICATIONS COULD VOID THE USER'S AUTHORITY TO OPERATE THE EQUIPMENT.