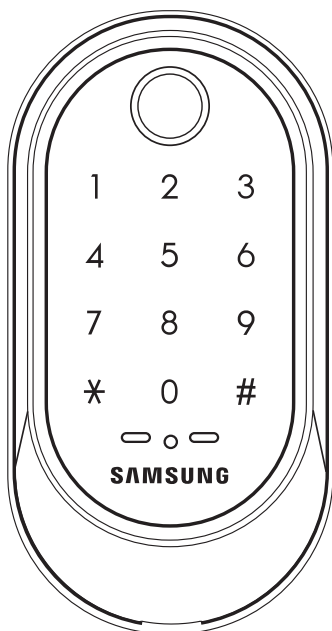


SAMSUNG SDS

Samsung SDS
Digital Door Lock



User Guide

Samsung SDS Digital Door Lock

SHP-A30

Please review all included documentation and use the product as intended. Before installing this product, fully read and understand this user guide. Safety precautions must be followed to avoid personal injury or property damage.

Introduction

Congratulations on the purchase of your Samsung SDS Digital Door Lock!

Your lock has a touch sensitive number display pad. Up to 50 users can be registered to gain access with unique Codes.

The touchscreen makes it convenient to enter the code and the Randomizer function helps prevent lockpicking using fingerprint traces on the touchscreen. Other convenient functions such as Automatic Locking / Sound Setting, etc. provide advanced security and peace of mind.

Table of Contents

Introduction	2
Safety Cautions	3-4
Installation	5-11
Components & Tools	5
Door Preparation	6-7
Preparing the parts	8
Installing Lock	9-11
Programming	12
Programming Features	12-13
Definitions	13-14
Basic Lock Operation Overview & Lock Activation	15
Status Indicators & Changing the Master PIN Code	16
Managing User PIN codes	17-19
Managing User Fingerprints	20-22
Authentication Methods Management menu	23
Configuration Settings menu	24-29
Privacy Mode Functions & Master Lock Functions	31
Miscellaneous	32
Miscellaneous Information	32-34
Troubleshooting	35-36
User Registration Table	37
Product Specifications	38
Product Warranty	40-41
Drilling Template	43-46

Safety Cautions

Warning: This section contains important information to ensure the user's safety and prevent potential damage to property. Please, read this section carefully and use the product accordingly.

Caution when Installing Product

- It is not recommended to install this product in a rainy, humid, or salty place (e.g. coastal area), or a place exposed to direct sunlight for a long period of time. Long-term exposure to direct sunlight may cause a crack on the touch pad. Avoid exposure to direct sunlight.
- Much dew condensation may affect the performance of this product.
- Do not install this product in a place where the gap between the door and the frame is 5 mm or more.
- Before installing an IoT door lock, check your wireless environment. Depending on the indoor wireless environment, an IoT door lock may not be installed or its service may not be supported. To check your wireless environment, you need a smartphone and a wireless access point (AP) in your house.
- Install the door lock while the door is open. Even after completing the installation, do not close the door until you check if the door lock is operating properly.
- While installing this product, do not let the door lock fall to the ground. If this product falls or is dropped during installation, you may be injured or the product may be damaged.

Caution when Using Product

- Do not use the excessive force or sharp objects to push the lock buttons.
- Do not operate this product with wet hands, and keep liquids such as water or beverages away from this product. It may malfunction or be damaged.
- Do not use water, benzene, or alcohol when cleaning the product. Use a soft dry cloth.
- Make sure that the door is completely closed when going outside.
- Make sure that no unauthorized person has access to the PIN Code. Change it regularly.
- Be careful not to hit the handle. You may be injured.
- Be sure to correctly match the poles (+/-) when installing the batteries. Installing the batteries incorrectly may result in the batteries leaking acid, or the batteries may burst.
- When the battery replacement alarm voice sounds, use all new batteries instead of the existing batteries.
- Batteries may consume more energy depending on the wireless communication environment.
- Radio interference may occur when this product is used, or from other devices.
- If this radio system has radio interference during operation, it may not function properly.
- Much dew condensation may affect the performance of this product.

- Keep a distance of 20 cm or further when using this product.
- Do not scratch the fingerprint recognition component with a metal object such as a coin, key, or necklace.
- If your finger or the fingerprint recognition component is dirty or wet, wipe it clean to remove any moisture before using the sensor.
- If the surface of your finger is not smooth (wounded or swollen), your fingerprint may not be recognized.
- If your finger is too small or thin, the fingerprint recognition rate may decrease.
- If you bend your finger or use only your fingertip with the fingerprint recognition component, your fingerprint may not be recognized. Place your finger completely on the fingerprint recognition component for best results.
- To increase the fingerprint recognition rate, register the fingerprint you would usually use.
- If the surrounding near this product is too dry, static electricity may be generated. If this is the case, touch a metal object to eliminate static electricity before using the fingerprint recognition function.

INSTALLATION

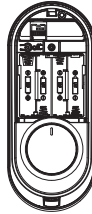
Components & Tools

Components and Drawing

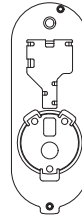
A Exterior Unit



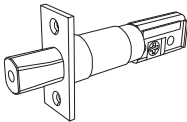
B Interior Unit



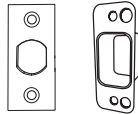
C Interior Mounting Plate



D Adjustable Deadbolt



E Strike Parts

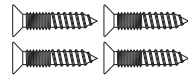


Round face
plate

Strike

Dust Box

F1 Screw for Strike and
Dead bolt



Spec: FH+T4x19

F2 Screw for
mounting plate



Spec: BH+M5x35

F3 Screw for
mounting plate



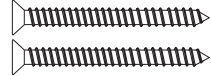
Spec: FH+#8(4.2)x20

F4 Screw for Interior
unit



Spec: FH+M4x8

F5 Screw for Reinforcement
plate

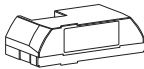


Spec: FH+T5x76

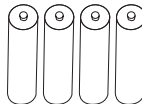
G Cover Pin



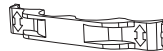
H WiFi Module Pack



I Batteries



J Battery Bracket



K User Manual



Tools

Door Preparation

- 2-1/8"(54mm) hole saw: Main Hole
- 1"(25mm) hole saw: Dead bolt hole
- 1/8"(2.5mm) drill bit: Dead bolt screw hole
- Chisel and hammer
- Drill

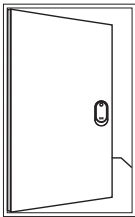
Lock Installation

- #2 Phillips screwdriver

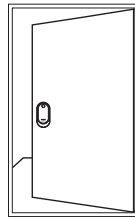
Door Preparation

Step 1. Check the Door Status

- 1) This lock supports door thickness of 1-3/8" to 2-5/32" (35 to 55mm).
- 2) Using the provided lock template, ensure that there are no obstructions that would prevent installing the lock properly.
- 3) Take note of which orientation the deadbolt will need to be installed, left hand or right hand.



Left-handed Door
When viewed from the Outside, the hinge is on the left.



Right-handed Door
When viewed from the Outside, the hinge is on the right.

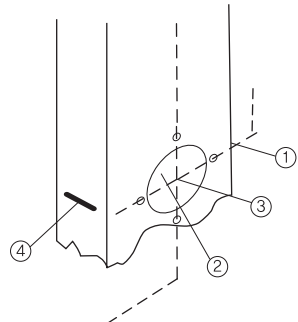


Please, be aware of that there has be more than 50mm gap between the door frame.

Step 2. Mark on the Door

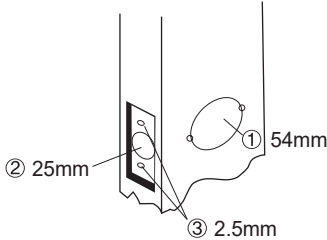
Check the location and direction of the deadbolt, attach the drilling template (page 43) on the side of the door, and mark on it with a pen.

- 1) Align the horizontal line across the door.
- 2) Align the vertical line over the door.
- 3) Mark the centers of the holes with the drilling template.
- 4) Mark the centerline of the deadbolt by aligning it with the vertical line.



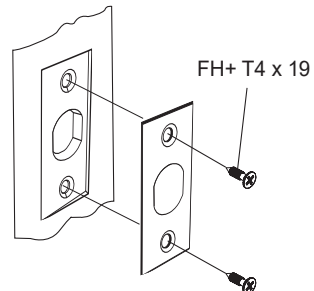
Step 3. Drilling

- 1) Drill a 2-1/8" (54 mm) diameter hole through the door, as indicated on the template, using a hole saw.
- 2) Drill a 1" (25 mm) mortise hole using a hole saw.
- 3) Drill strike plate holes using a drill bit (1/8", 2.5 mm).



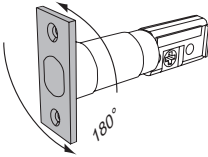
Step 4. Strike Plate Installation

- 1) Using the template, locate the center horizontal line for the deadbolt hole, which lines up with the center of the 2-1/8" hole, and draw a horizontal line on the door frame to mark where you will make the deadbolt mortise hole.
- 2) Measure half the thickness of the door. Now, measure that distance from where the door stops at the frame when the door is closed toward the door jamb and mark a straight, vertical line the length of the door strike plate. Draw a horizontal line from the mark you made in Step 1 toward the vertical line. Where both lines cross, make a 1" (25 mm) diameter hole, 1" (25 mm) in depth.
- 3) Align the holes of the strike plate with the vertical line. Trace the outline of the strike plate and mortise with a 1/16" (1.6 mm) indentation. Attach the strike plate with the 2 screws provided.



Preparing the parts

1. Adjusting the length of the dead bolt

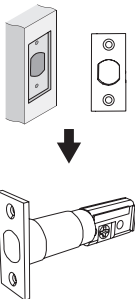


Turn the body of the dead bolt to adjust the length of the dead bolt.

It can be 60mm (2-3/8") or 70mm (2-3/4")

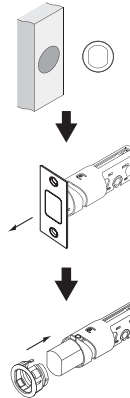
2. Changing the faceplate of the dead bolt

Change the faceplate of the dead bolt following the size of a strike hole.



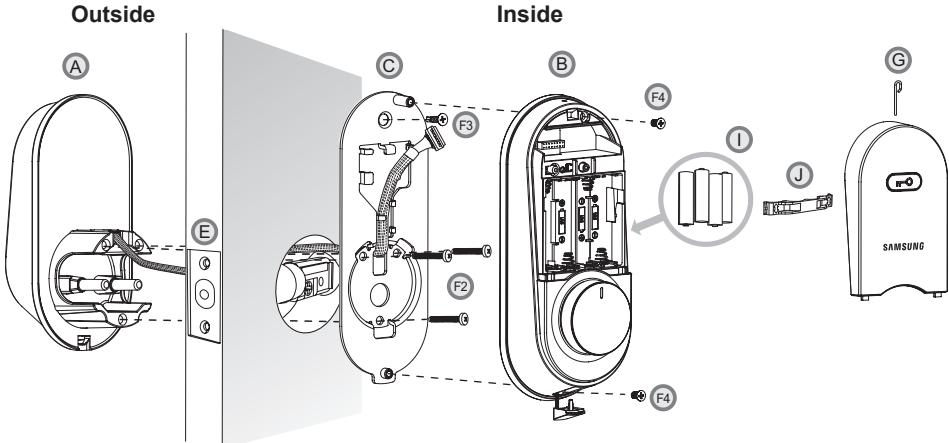
Rectangle Strike hole
: No need to change.

OR



Round Strike hole
1. Remove the strike faceplate.(PULL)
2. Insert the round faceplate.

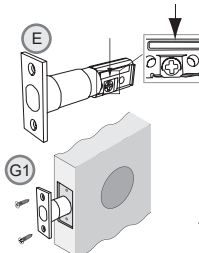
Installing lock



Caution when Installing Product

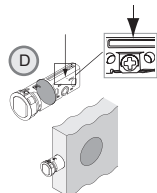
- Before installing an IoT door lock, check your wireless environment. Depending on the indoor wireless environment, an IoT door lock may not be installed or its service may not be supported. To check your wireless environment, you need a smartphone and a wireless access point (AP) in your house.
- Install the door lock while the door is open. Even after completing the installation, do not close the door until you check if the door lock operating properly.
- While installing this product, do not let the door lock fall to the ground. If this product falls or is dropped during installation, you may be injured or the product may be damaged.
- When installing this product, check to see if the dead bolt fits in the door. The dead bolt should be in the lock position until the batteries are inserted.

1. Installing the Dead Bolt(E)



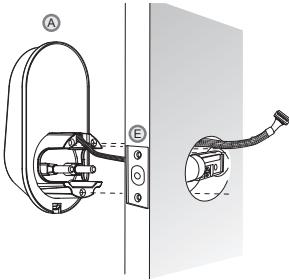
1. Before installation

- 1) Check the faceplate type of your door.
- 2) Make sure the deadbolt direction as shown before inserting it into a door side.
2. Insert the deadbolt from the side of the door.
3. Fix the deadbolt using two FH+T4X19 screws.



*If there is round strike hole, change the faceplate, and insert the deadbolt following right side drawing.

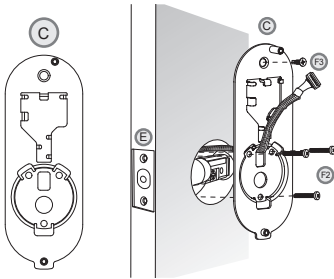
2. Installing the Exterior Unit



1. Ensure the Exterior Unit is aligned with the center hole of the deadbolt.
2. Attach the exterior unit.

CAUTION: The dead bolt must be in a retracted position.
Insert the Exterior Unit and pull the connector cable out above the dead bolt.

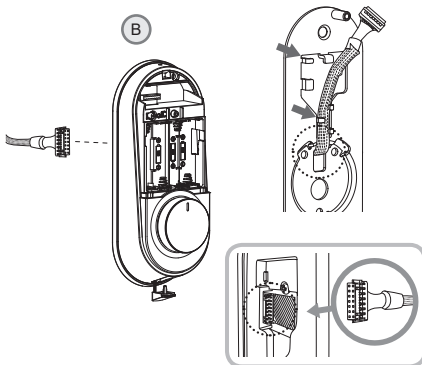
3. Installing the Mounting Plate



1. Detach the Interior Mounting Plate from the interior unit.
2. Fasten the interior mounting plate with two BH+M5x35 (F2) 90% of the way.
3. Align the Exterior Unit with the Interior Mounting Plate and then tighten the screws.

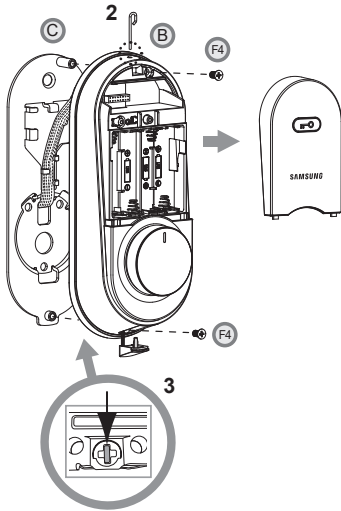
CAUTION: Do not over-tighten the screws.

4. Connecting the cable



1. Pull the connector out through the connector hole of the interior mounting plate, and push the connector cable into the cable hook.
2. Connect the cable from the exterior unit to the interior unit.
3. After connecting the cable, push the cable into the hole of the door.

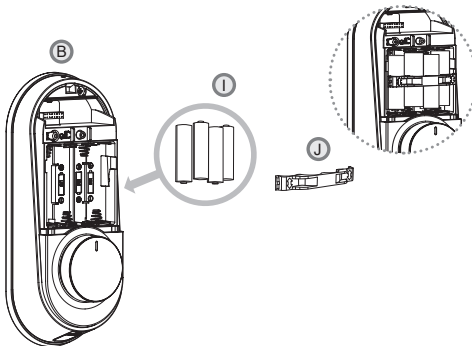
5. Fix Screw for the Interior Unit



1. Before installing the interior unit,
 - 1) Check the direction of the thumb turn while the dead bolt is in the OPEN POSITION.
 - 2) Check if the knob of the interior unit is placed at the center.
2. Use the cover pin to push the battery cover hole on the upper section of the interior unit to open the battery cover.
3. Insert the tailpiece of the interior unit vertically into the dead bolt.
4. Align the Interior Unit on to the Interior Mounting Plate, and attach it with 3 screws. Tighten the screw on the lower section of the interior unit and connect the screw cover.

CAUTION: Insert the tailpieces vertically into the dead bolt, equally on the left and right.

6. Final Check



1. Install 4 batteries. A Melody will sound when all 4 batteries are installed correctly. After that, insert the battery bracket to fix the battery.
2. Once the batteries are connected, the dead bolt is automatically set. After that, press [OPEN/CLOSE] button to check whether the dead bolt works properly.
3. Once the dead bolt is completely set, install the battery cover.

CAUTION: Check the movement of the dead bolt by the thumb turn.

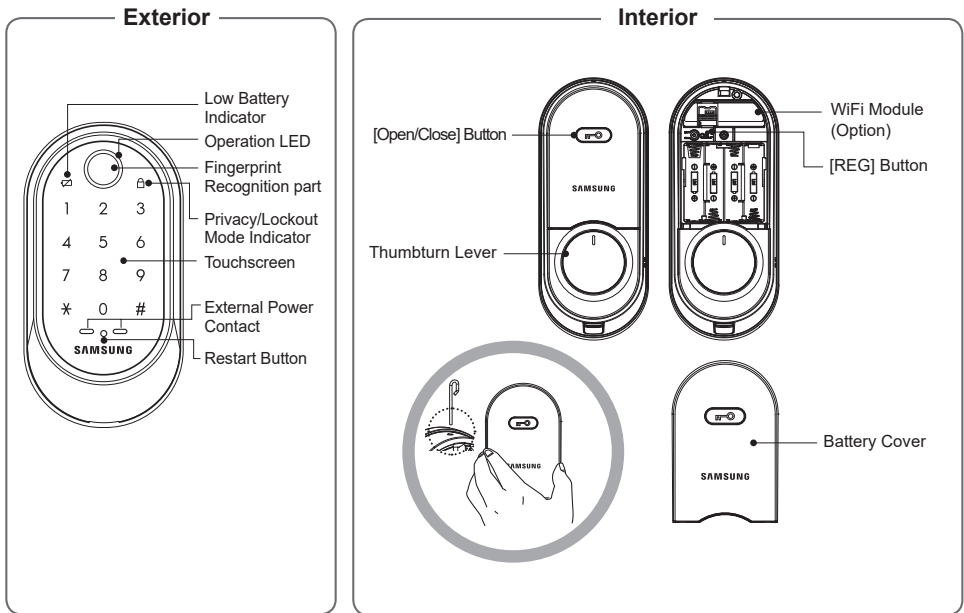
Check Points after Installing Product

Once the smart door lock is completely installed, check if it is properly operating. After installation, check the following:





- After authenticating the PIN Code on the exterior unit, check if the dead bolt is operating normally.
- Manually check if the knob of the interior unit is operating smoothly.
- Press the [OPEN/CLOSE] button of the interior unit to check if the dead bolt is normally operating.
- While the door is closed, check if the dead bolt is operating and not hitting the door.

PROGRAMMING

Programming Features



Symbols	Description	Symbols	Description
	Touch the [Touchscreen] .		Press the [*] button. It is used to complete number entry.
	Enter the Master PIN Code (4~12 digits). Factory Default: 1234		Enter the User PIN Code (4~12 digits).
	REG: Open the battery cover of the Interior Unit and press the [REG] button. It is used to begin or exit the Program mode.		Press the Number buttons.
	REG5: Press the [REG] button for 5 seconds.		

Symbols	Description	Symbols	Description
	Place the finger on the fingerprint sensor		Repeat the process inside the rectangle.
	Enter the User Number. Can be set from 1 to 50.		Press the [OPEN/CLOSE] button.

Definitions

2-Step Authentication Mode : Both PIN Code and fingerprint need to be authenticated to open the door, ensuring more security. To set this mode, one or more fingerprints need to be registered.

Away mode : When you go out, the lock generates an alarm sound when an attempt is made to forcefully open the door from the inside. In the Away mode, if someone tries to open the door from the inside, the emergency alert lamp on the outside blinks and the “beep- beep- beep-” sound is generated for 5 minutes.

Locking Mode (Auto/Manual) : You can enable or disable the function for locking the door automatically when it is closed. The factory default is ‘Manual mode’.

- Auto : When the door is unlocked, it is automatically locked after a preset time (10/30/60/120 seconds). However, it does not function if the batteries are completely discharged.

- Manual : The door does not lock automatically when it is unlocked, If you touch the **[Touchscreen]** or press the **[OPEN/CLOSE]** button on the Interior Unit, The door will be locked.

Lockout Mode (Protect Mode) : When more than 5 failed authentication attempts with unregistered PIN Codes/Fingerprints occur, the lock disables the keypad for 3 minutes for security reasons. The lock is re-activated again automatically after 3 minutes and may still be operated using the home control or security system.

Low Battery Indicator : Refers to the state when the operating voltage of the lock is lower than the standard voltage, and activates the Low Battery Alarm (“Please change the batteries”) to indicate that the batteries need to be replaced. In case of the low battery, the low-battery LED flickers when using doorlock.

Master PIN Code : You can enter only one Master PIN (4-12 digits) Code. You can register the User PIN Codes/Fingerprints after authenticating with the Master PIN (4-12 digits) Code. You can open the door with the Master PIN Code, and the factory default is ‘1234’.

OPEN/CLOSE Button : A one-touch button to open the locked door. (It is also used to lock the door from inside in the Manual locking mode.)

Privacy Mode : Press and hold the **[OPEN/CLOSE]** button for more than three seconds, if three beeps deactivate the keypad. As it is set from the inside, provides a secure lock for the convenience of the occupant(s). Privacy mode disables remote control capabilities.

Randomizer function : Press two-digit random numbers before the user PIN code in order to prevent the intruder to see the fingerprint marks left on the touchscreen. You can also disable this feature, but is **enabled** by default.

Registration Button : This button is used to change Master PIN Code/User PIN Codes/User Fingerprints or the lock settings. It is found below the battery cover of the Interior Unit. The length of time the **[REG]** button is pressed varies depending on the function.

Resetting : Deletes all registered information and restores the factory default. After resetting, change the Master PIN Code for security.

Restart Button : This button resets the lock when the lock stops functioning. Registered information is not deleted.

Thumbturn Lever : When the batteries are completely discharged, this device is used to mechanically lock or unlock the door from inside.

User Fingerprint : You can register up to 50 User Fingerprints. You can open the door with a User Fingerprint.

User Number : It is the same number as the registered user's address and can be set from 1 to 50. The User Number should be managed with caution as it is used to register or delete User PIN Codes/Fingerprints.

User PIN Code : You can register up to 50 User PIN Codes (4-12 digits). You can open the door with a User PIN Code.

Volume Setting : The volume during the input of numbers and opening or locking of the door can be set from Level 1 ~ Level 4. The sound is muted at Level 1 and is at maximum volume at Level 4. The registration mode operates at Level 3 regardless of the sound setting.

WiFi Setting (Option) : If you connect a WiFi module, you can use App-based various user services through WiFi. A user can be registered through the app.

Basic Lock Operation Overview

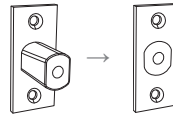
Opening the Door with a PIN Code



Touch the **[Touchscreen]**.

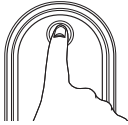


Enter the PIN Code and press the **[*]** button.

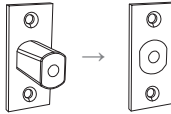


The door opens within one second.

Opening the Door with a Fingerprint



Place the registered fingerprint on the fingerprint sensor.



The door opens within one second.

Lock Activation

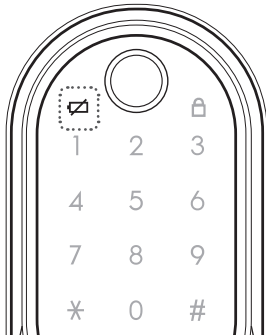


Touch the **[Touchscreen]**.

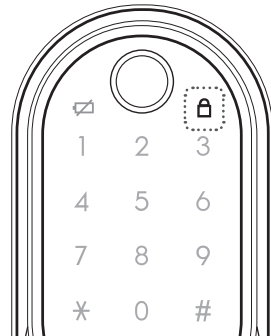
Touch lock with back of hand or fingers to activate.

Status Indicators

Low Battery Indicator

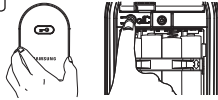


Privacy Mode Indicator



Changing the Master PIN Code

1



Open the battery cover of the Interior Unit and press the **[REG]** button briefly.

2



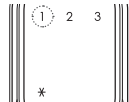
When the touchscreen is illuminated, enter the current Master PIN Code (default is '1234') and press the **[*]** button.

3



Press the **[*]** button after pressing the **[1]** button.

4



Press the **[*]** button after pressing the **[1]** button.

5



Enter the new Master PIN Code and press the **[*]** button.

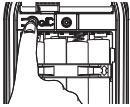
Note: Master PIN Code must be 4~12 digits.



Managing User PIN codes

Adding a User PIN Code

1



Open the battery cover of the Interior Unit and press the **[REG]** button briefly.

2



When the touchscreen is illuminated, enter the current Master PIN Code (default is '1234') and press the **[*]** button.

3



Press the **[*]** button after pressing the **[1]** button for the Registration mode.

4



Press the **[*]** button after pressing the **[2]** button for the User PIN Code managing mode.

5



Press the **[*]** button after pressing the **[1]** button for the User PIN Code adding mode.

6



Enter a User Number (1~50) to register the User PIN Code and press the **[*]** button.

*Choose a User Number that has not already been used.

If don't enter a User Number and press the **[*] button, the User Number is sequentially assigned on the empty User Number from 1 to 50.

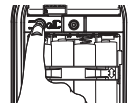
7



Enter a new User PIN Code and press **[*]** button.

Note: User PIN Code must be 4~12 digits.

8

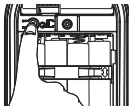


Enter another User Number or press the **[REG]** button to quit.



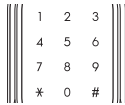
Deleting a User PIN Code

1



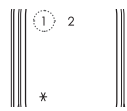
Open the battery cover of the Interior Unit and press the **[REG]** button briefly.

2



When the touchscreen is illuminated, enter the current Master PIN Code (default is '1234') and press the **[*]** button.

3



Press the **[*]** button after pressing the **[1]** button for the Registration mode.

4



Press the **[*]** button after pressing the **[2]** button for the User PIN Code managing mode.

5



Press the **[*]** button after pressing the **[2]** button for the User PIN Code deleting mode.

6



Enter a User Number (1~50) to delete the User PIN Code and press the **[*]** button.

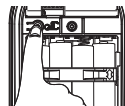
* If you don't enter a User Number and press **[*]** button, you can enter the User PIN Code directly to delete it.

7



Enter a User PIN Code and press **[*]** button.

8

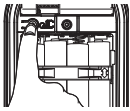


Enter another User Number or press the **[REG]** button to quit.



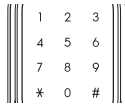
Deleting All User PIN Code

1



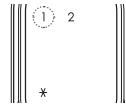
Open the battery cover of the Interior Unit and press the **[REG]** button briefly.

2



When the touchscreen is illuminated, enter the current Master PIN Code (default is '1234') and press the **[*]** button.

3



Press the **[*]** button after pressing the **[1]** button for the Registration mode.

4



Press the **[*]** button after pressing the **[2]** button for the User PIN Code managing mode.

5



Press the **[*]** button after pressing the **[3]** button. Then All User PIN Code will be deleted.

