

AMETHYST®

Himini-TWS

USER MANUAL



NOTE: This equipment has been tested and found to comply with the limits for a Class B digital device, pursuant to Part 15 of the FCC Rules. These limits are designed to provide reasonable protection against harmful interference in a residential installation. This equipment generates, uses and can radiate radio frequency energy and, if not installed and used in accordance with the instructions, may cause harmful interference to radio communications. However, there is no guarantee that interference will not occur in a particular installation. If this equipment does cause harmful interference to radio or television reception, which can be determined by turning the equipment off and on, the user is encouraged to try to correct the interference by one or more of the following measures:

- Reorient or relocate the receiving antenna.
- Increase the separation between the equipment and receiver.
- Connect the equipment into an outlet on a circuit different from that to which the receiver is connected.
- Consult the dealer or an experienced radio/TV technician for help.

This equipment complies with FCC's RF radiation exposure limits set forth for an uncontrolled environment. The antenna (s) used for this transmitter must be installed and operated to provide a separation distance of at least 20 cm from all persons and must not be collocated or operating in conjunction with any other antenna or transmitter. Installers must ensure that 20cm separation distance will be maintained between the device (excluding its handset) and users.

"batteries shall not be exposed to excessive heat such as sunshine, fire or the like." "the apparatus shall not be exposed to dripping or splashing and that no objects filled with liquids, such as vases, shall be placed on the apparatus."

CAUTION
 Danger of explosion if battery is incorrectly replaced. Replace only with the same or equivalent type.
 where the MAINS plug or an appliance coupler is used as the disconnect device, the disconnect device shall remain readily operable

FCCID:P4LHMW17091
 Manufacturer:Foshan LANCHIYA Digital Technology Co., Ltd China
 Address : hongtu RD, Songxia Industry Park, Songgang Nanhai District, Foshan, Guangdong Province, China
 MADE IN CHINA

PROPERTY RIGHTS INFORMATION:

The trademark amethyst®lanchiya®and all the developed products with this label are registered patents, and belong to Foshan LANCHIYA digital Technology Co., Ltd. Our company reserves all rights, and not allow reprinting. Other concerned trademarks all belong to their proprietors. As to the constant update and development of the products, our company reserves the right to change and rework our products without notice.

SAFETY INSTRUCTIONS:

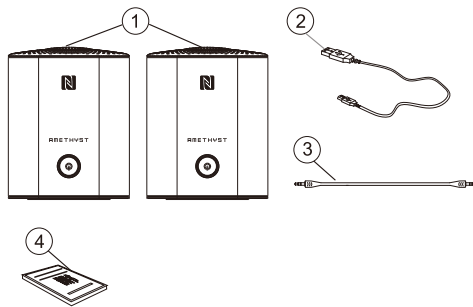
To ensure your safety and enjoyment, read and follow the safety instructions and use in the directed manner. Keep this manual for future reference.

WARNING: To prevent any fire or electrical hazards, do not remove or disassemble any parts from this unit. Please ensure that you use a qualified technician to service it.

- Do not expose the unit to rain, water or moisture.
- Do not place liquid on or close to unit.
- Do not place unit on or near the fire.
- Keep away from heat and dust.
- Place unit on a stable and level platform.
- Do not place heavy items on top of unit.
- Do not use excessive force when pushing the unit buttons.
- Do not attempt to pull the charging cable when removing it from power outlet.
- Do not use damaged or defective charging cables.
- Clean with a soft damp cloth only.

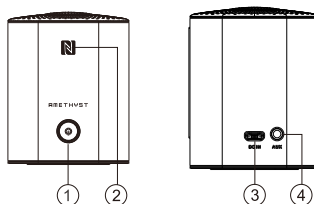
Caution: The user is cautioned that changes or modifications not expressly approved by the party responsible for compliance could void the user's authority to operate the equipment.

※ Package Contents



1. Two Speakers 2. USB Charging Cable 3. AUX Cable
 4. User Manual


※ Control Panel Instruction



1. Power Button 2. NFC 3. DC IN 4. AUX Input

BRIEF INSTRUCTIONS

1. Power on:

Press the POWER BUTTON () of 2 units for 3 seconds. The indicate lights will twinkle and the prompt tones will be "du...du...du". The indicate lights will keep on when power on if 2 units have been paired before. The speakers will search the device that has been paired last time automatically.

2. Operation Controls under Bluetooth mode:

2.1. Connect by Bluetooth:

- 1) Turn on 2 units.
- 2) Choose 1 unit and double click the power button fastly. The indicate light will twinkle and the prompt tone will be "du...du".
- 3) Turn on Bluetooth in the mobile and choose "Himini" to connect this unit. The indicate light will keep on and the prompt tone will be "du" after connection.
- 4) Press the power button of the connected unit for 1 second first. The indicate light of this unit will twinkle again and the prompt tone will be "du...du". Then press the power button of another unit for 1 second. The indicate light of another unit will twinkle and the prompt tone will be "du...du".
- 5) Then the indicate lights of 2 units will keep on and the prompt tones will be "du" after pairing.

2.2. Connect by NFC:

- 1) Make sure the speakers are on and in Bluetooth mode.
- 2) Make sure the mobile has NFC communication which can activate the Bluetooth to pair and audio connection.
- 3) Make sure the mobile screen is unlocked.
- 4) Make sure the NFC and Bluetooth in the mobile are on.

P3

- 5) Turn on the speaker and double click the power button fastly. The indicate light will twinkle and the prompt tone will be "du...du". Make the NFC part of the mobile and the speaker close to each other for 2 seconds (Move the mobile on NFC part of the speaker until it is connected if you can't make sure where NFC part of your mobile is).
- 6) Choose "yes" when the mobile displays the option to connect the speaker. Then move the mobile and wait for 3-10s until pairing. (Note: If the mobile has paired with the speaker, it will not display the option to connect Himini or not, but display the reminding message of connected or disconnected).
- 7) Press the power button of the connected unit for 1 second first. The indicate light of this unit will twinkle again and the prompt tone will be "du...du". Then press the power button of another unit for 1 second. The indicate light of another unit will twinkle and the prompt tone will be "du...du".
- 8) Then the indicate lights of 2 units will keep on and the prompt tones will be "du" after pairing.

2.3. Reconnect

If you need to disconnect the current connection, double click the power button fastly. The indicate light will twinkle and the prompt tone will be "du...du". Then you can use the other Bluetooth devices to connect the speakers.

3. AUX IN mode:

Insert AUX cable to the AUX input port when power on or insert AUX cable to the AUX input port then power on, the speaker will switch to AUX IN mode automatically.

P4



4. Recharge:

- 1) Connect the USB standard charging cable with an adaptor (5V 1A) to DC IN port of Himini.
- 2) Recharge when power off, the **red** indicate light will keep on. Then the **red** indicate light will be off when the recharge is finished.
- 3) Recharge when power on, the **purple** indicate light will keep on. Then the **blue** indicate light will keep on when the recharge is finished.

5. Low voltage alarm:

If the supply voltage is too low in 1 unit when the 2 units have been paired, the prompt tones will be "du...du...du...du...du" in every minute and the indicate light will twinkle 4 times. Then the 2 units will power off automatically if the supply voltage is not high enough.

6. Power off:

- 6.1. Press the POWER BUTTON () of 1 unit for 3 seconds if the 2 units have been paired. Then the indicate lights of 2 units will be off synchronously. The prompt tones will be "du...du...du...du".
- 6.2. Press the POWER BUTTON () of 2 units for 3 seconds separately if the 2 units haven't been paired.
- 6.3. If the 2 units have been paired without connecting to any device or any operation for 10 minutes, the 2 units will power off automatically.

Trouble shootings:

1. If the speaker can't be found in Bluetooth mode, the speaker could be connected to another device. Remove the device from any other devices and try again. If you still can't find the Bluetooth speaker, please turn off for 5 seconds then turn it back on.
2. Bluetooth signal is intermittent: the effective distance between speaker and device is 30 feet, the signal will be intermittent if the distance between the device and speaker is more than 30 feet.

P5

3. If your Bluetooth device is in search mode it may find many other Bluetooth devices, please wait until the search is finished and choose "Himini" to connect.
4. Don't hold the mobile device too close to the speaker when using the phone function to avoid echo.
5. NFC: please make sure the mobile has NFC function and it is turned on.
6. If the Bluetooth connection has failed several times, please turn off the speaker and wait for 3 minutes before you restart the speaker. Then turn it on and try it again.
7. When the speaker battery is low, please recharge to ensure the normal playback of the speaker.
8. Please note that electric power only supply to battery instead of amplifier, so when power consumption is high, Himini may stop playing if battery power is low even Himini is being charging.

SPECIFICATIONS

Amplifier output power: 3W
Amplifier input sensitivity: ≤ 775 mV
Distortion: $\leq 1\%$
Amplifier SNR: ≥ 75 dB
Frequency response: 80Hz~20KHz
DC input: DC5V $\overline{=}$ 1A
Bluetooth range: 7-10M
Operating frequency: 2.402GHz - 2.480GHz
Bluetooth version: V4.2

P6