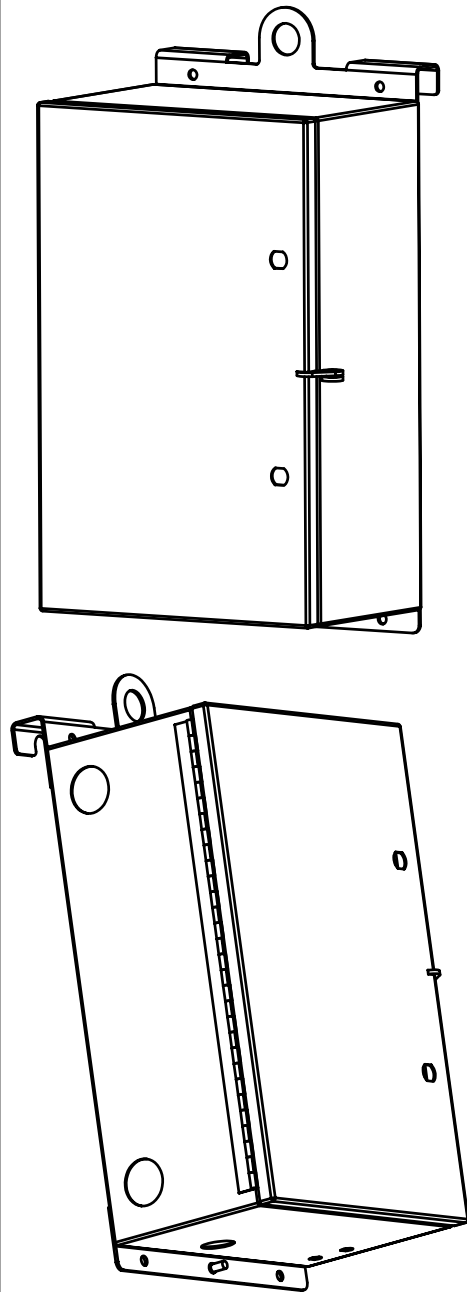


THIS DOCUMENT IS THE PROPERTY OF "Spotwave Wireless Inc." AND MAY BE NEITHER USED, COPIED, REPRODUCED OR OTHERWISE DEALT WITH NOR ITS CONTENTS COMMUNICATED TO OTHERS EXCEPT IN ACCORDANCE WITH WRITTEN INSTRUCTIONS RECEIVED FROM "Spotwave Wireless Inc.".

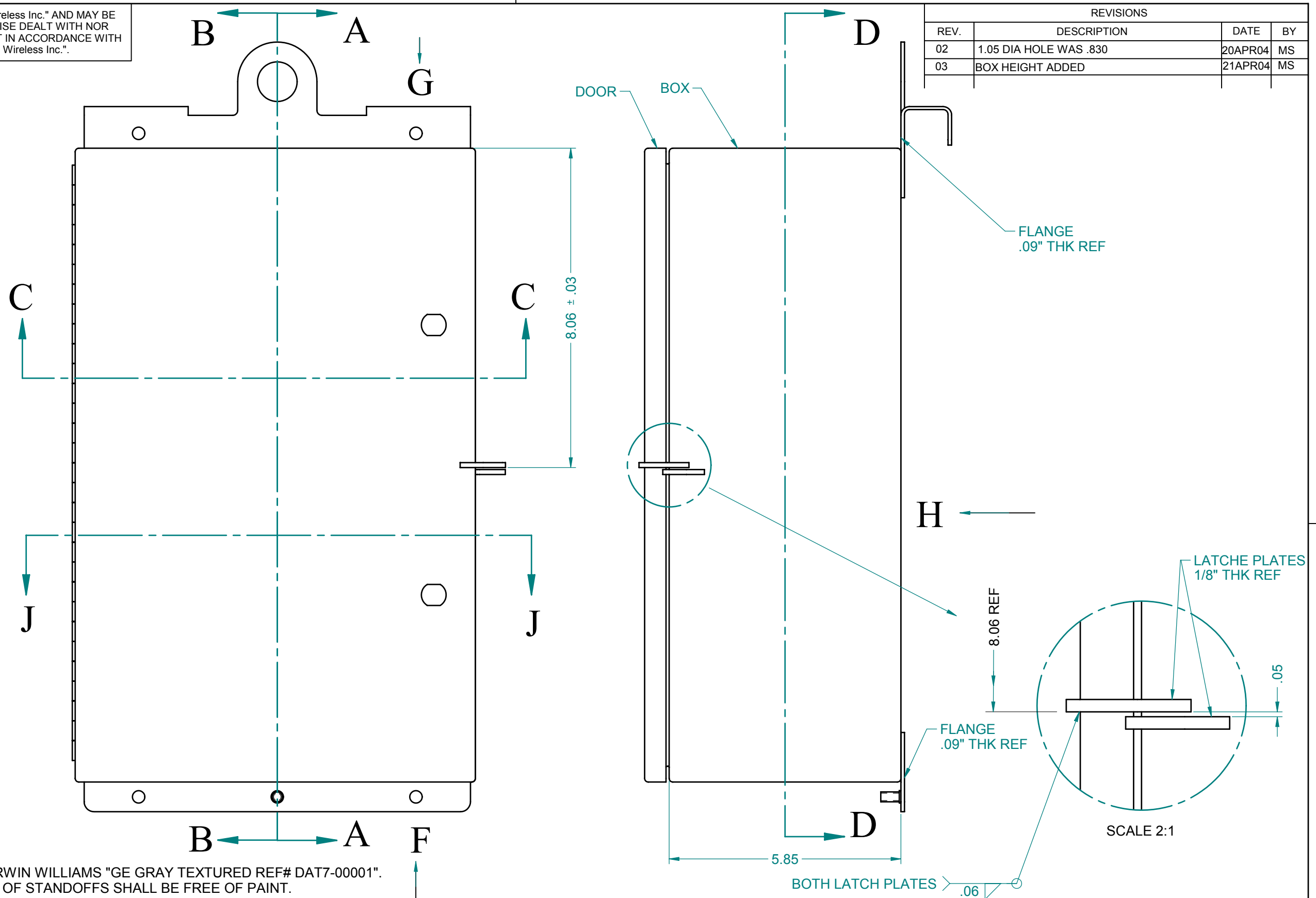
| REVISIONS | | | |
|-----------|------------------------|---------|----|
| REV. | DESCRIPTION | DATE | BY |
| 02 | 1.05 DIA HOLE WAS .830 | 20APR04 | MS |
| 03 | BOX HEIGHT ADDED | 21APR04 | MS |
| | | | |





RENDERED VIEWS
SCALE 1/4

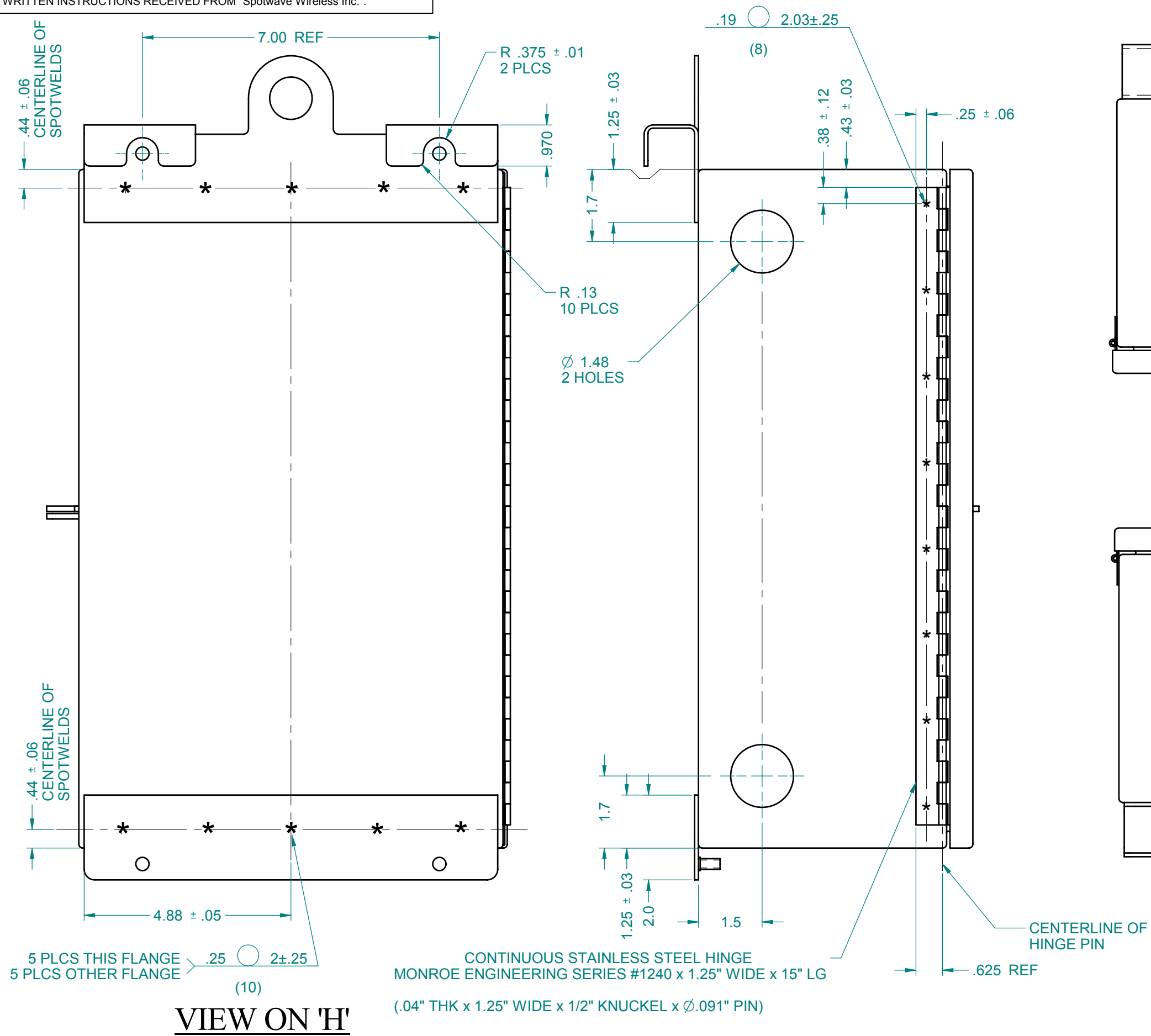
NOTES:

- 1 FINISH: POWDER COAT WITH SHERWIN WILLIAMS "GE GRAY TEXTURED REF# DAT7-00001".
THREADS & TOP SURFACE OF STANDOFFS SHALL BE FREE OF PAINT.
- 2 BOX & DOOR CORNERS SHALL BE MIG WELDED CONSTRUCTION & AIR TIGHT. GRIND CORNERS SMOOTH & ROUND 1/8" RAD MINIMUM. DOOR & BOX CORNER RADS SHALL MATCH (BEST EFFORT). NO GRINDING REQUIRED FOR INDICATED BEADS ON THE FOUR CORNERS.
3. UNLESS OTHERWISE NOTED INTERNAL BEND RADII ARE 1/32".
4. REMOVE ALL BURRS & BREAK SHARP EDGES, .01" RAD MAX
- 5 ENGRAVE OR STAMP PART NUMBER & REVISION WITH 1/8-1/4" HIGH CHARACTERS ON INDICATED SURFACE WITHOUT BLEMISH ON OTHER SIDE. TEXT MUST BE LEGIBLE AFTER PAINTING.



| | | | | | | | | | | |
|---|--------|---------|------|---|---|-----------------|------------------------|--------------|--|--|
| TOLERANCES | | | | MATERIAL: C.R STEEL; -.06" THK FOR BOX & DOOR -.09" THK FOR FLANGES -1/8" THK FOR LATCH PLATES | ALL DIMENSIONS INCHES | | Spotwave Wireless Inc. | | | |
| .X | .XX | .XXX | ANG | | 3rd ANGLE PROJECTION | | OTTAWA,CANADA | | | |
| ±. .03 | ±. .01 | ±. .005 | ± 3° | |  | | ENCLOSURE, ARU | | | |
| NEXT ASSY | | | | | DRAWN BY: M.SEGUIN DATE: APR 04 | | | | | |
| X | | | | | ENG. APPROVAL: DATE: | | | | | |
| FINISH: | | | | PROJ. APPROVAL: DATE: | | DWG NO. | | REV. | | |
|  | | | | | | D 130-000060-01 | | 03 | | |
| | | | | | | SCALE .8 | | NCAGE L1156 | | |
| | | | | | | | | SHEET 1 OF 5 | | |

THIS DOCUMENT IS THE PROPERTY OF "Spotwave Wireless Inc." AND MAY BE NEITHER USED, COPIED, REPRODUCED OR OTHERWISE DEALT WITH NOR ITS CONTENTS COMMUNICATED TO OTHERS EXCEPT IN ACCORDANCE WITH WRITTEN INSTRUCTIONS RECEIVED FROM "Spotwave Wireless Inc."



VIEW ON 'G'

SEE DETAIL 'T'
ON SHEET 5

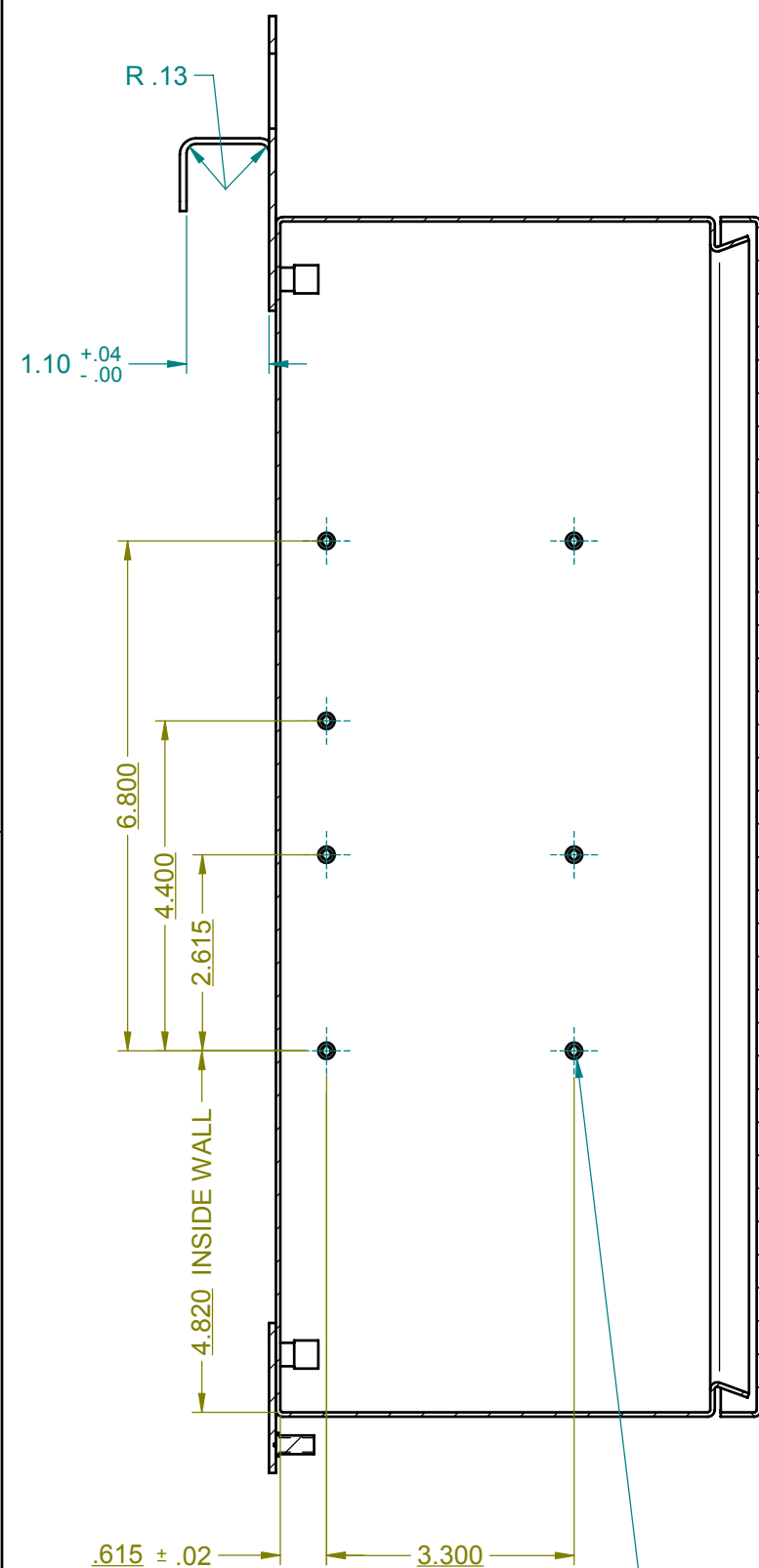
SEE DETAIL 'S'
ON SHEET 5

VIEW ON 'F'

VIEW ON 'H'

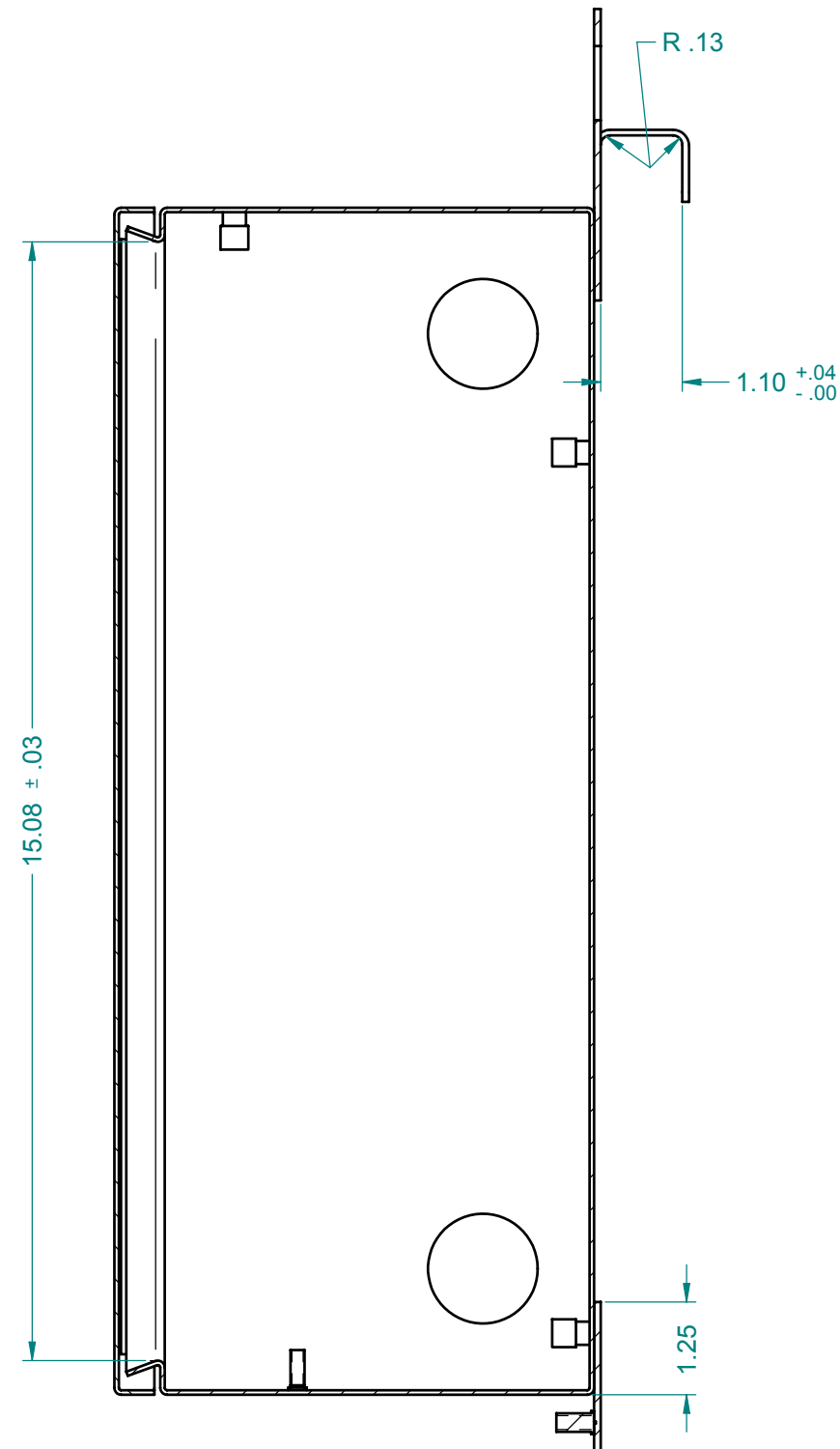
CONTINUOUS STAINLESS STEEL HINGE
MONROE ENGINEERING SERIES #1240 x 1.25" WIDE x 15" LG
(.04" THK x 1.25" WIDE x 1/2" KNUCKEL x $\phi .091$ " PIN)

THIS DOCUMENT IS THE PROPERTY OF "Spotwave Wireless Inc." AND MAY BE NEITHER USED, COPIED, REPRODUCED OR OTHERWISE DEALT WITH NOR ITS CONTENTS COMMUNICATED TO OTHERS EXCEPT IN ACCORDANCE WITH WRITTEN INSTRUCTIONS RECEIVED FROM "Spotwave Wireless Inc."

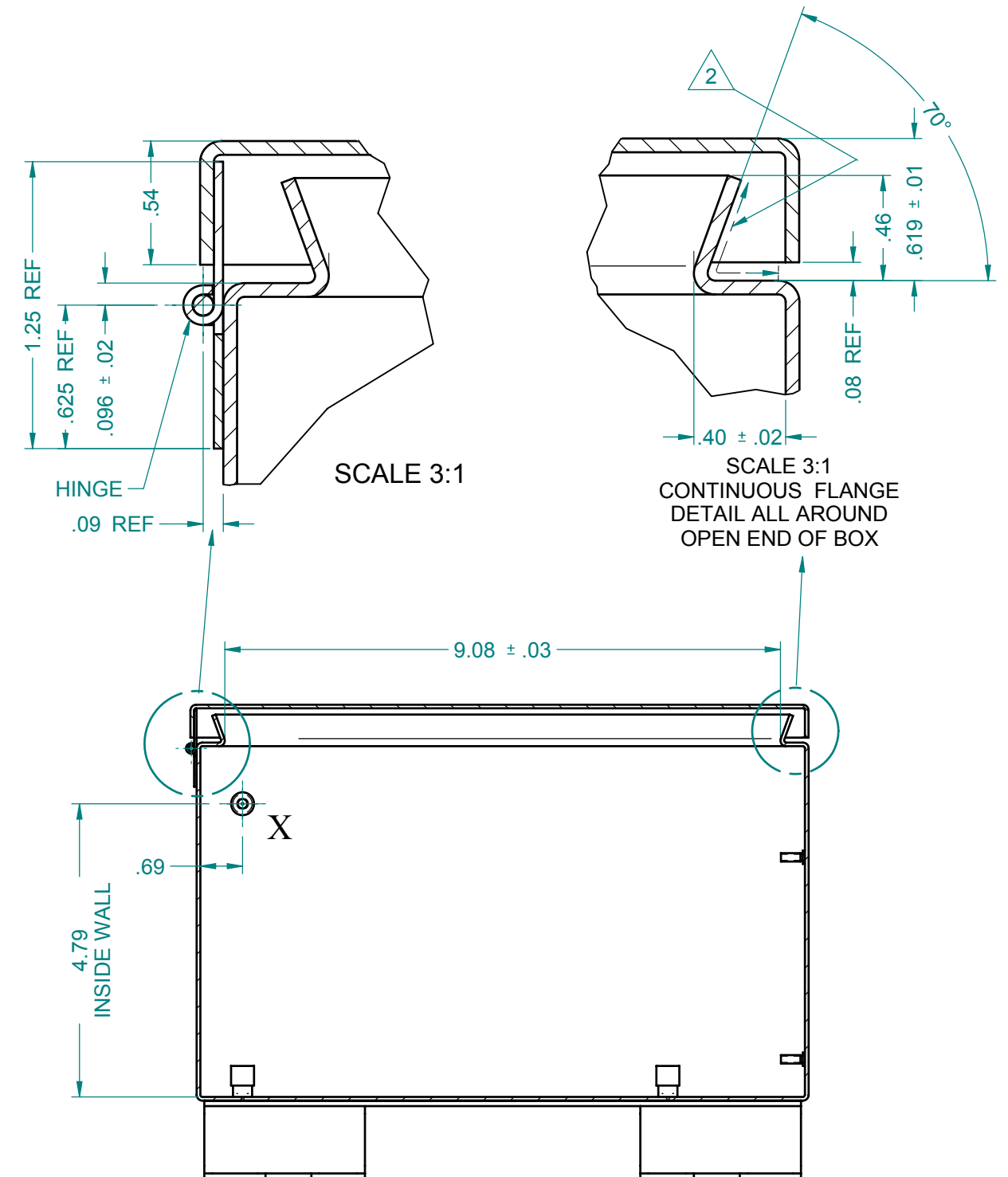


SECTION A-A

— CD WELD IN PLACE #6-32 x 3/8" LG SS STUD
CUTLASS STUDWELDING PART #2002-0312
NO SUBSTITUTIONS ALLOWED

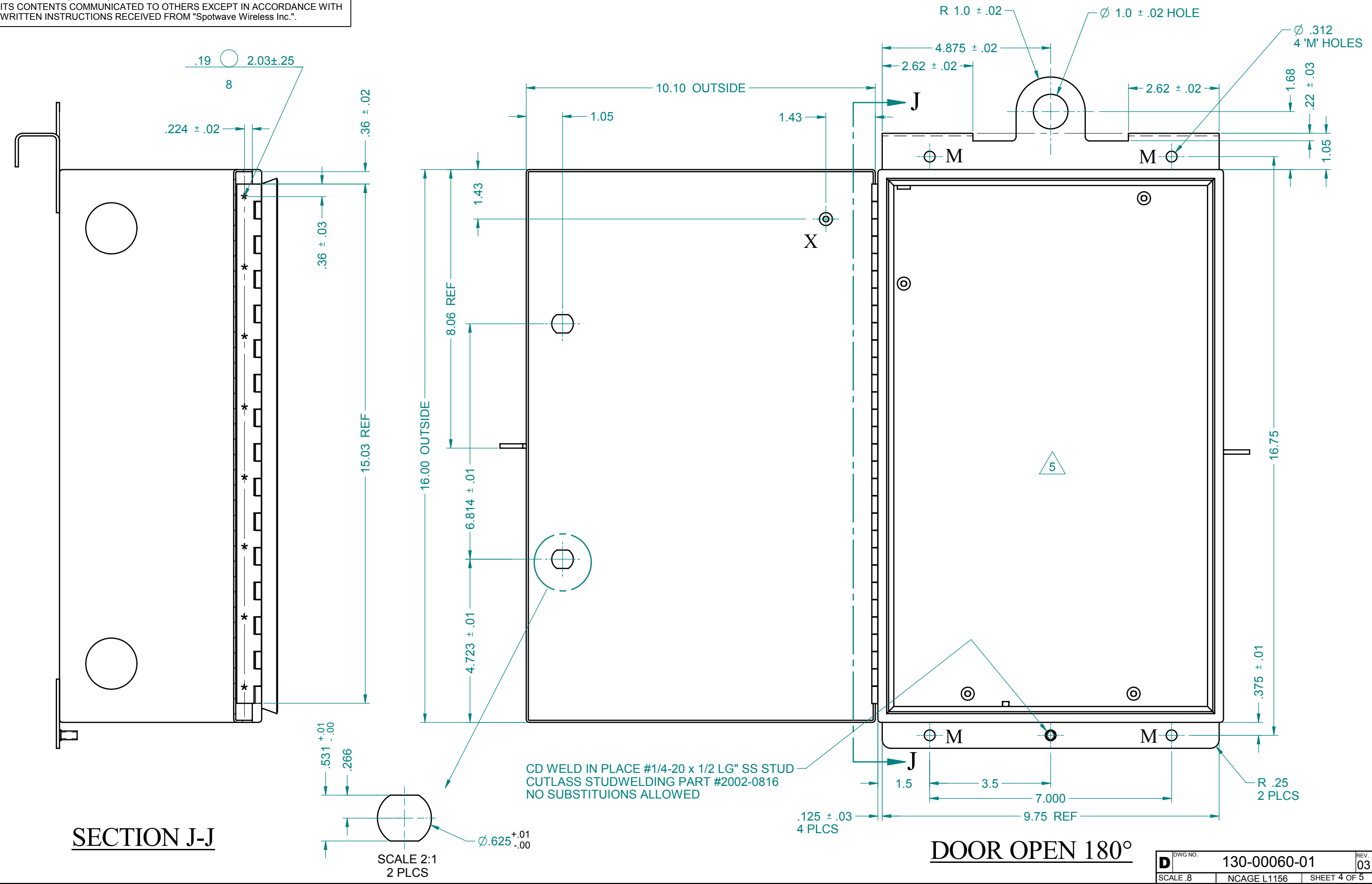


SECTION B-B



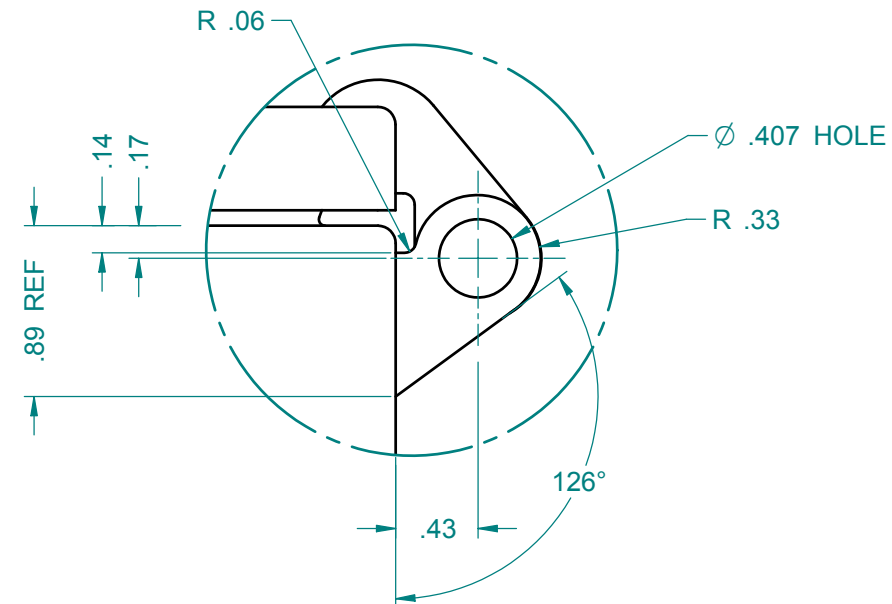
SECTION C-C

THIS DOCUMENT IS THE PROPERTY OF "Spotwave Wireless Inc." AND MAY BE NEITHER USED, COPIED, REPRODUCED OR OTHERWISE DEALT WITH NOR ITS CONTENTS COMMUNICATED TO OTHERS EXCEPT IN ACCORDANCE WITH WRITTEN INSTRUCTIONS RECEIVED FROM "Spotwave Wireless Inc."



THIS DOCUMENT IS THE PROPERTY OF "Spotwave Wireless Inc." AND MAY BE NEITHER USED, COPIED, REPRODUCED OR OTHERWISE DEALT WITH NOR ITS CONTENTS COMMUNICATED TO OTHERS EXCEPT IN ACCORDANCE WITH WRITTEN INSTRUCTIONS RECEIVED FROM "Spotwave Wireless Inc.".

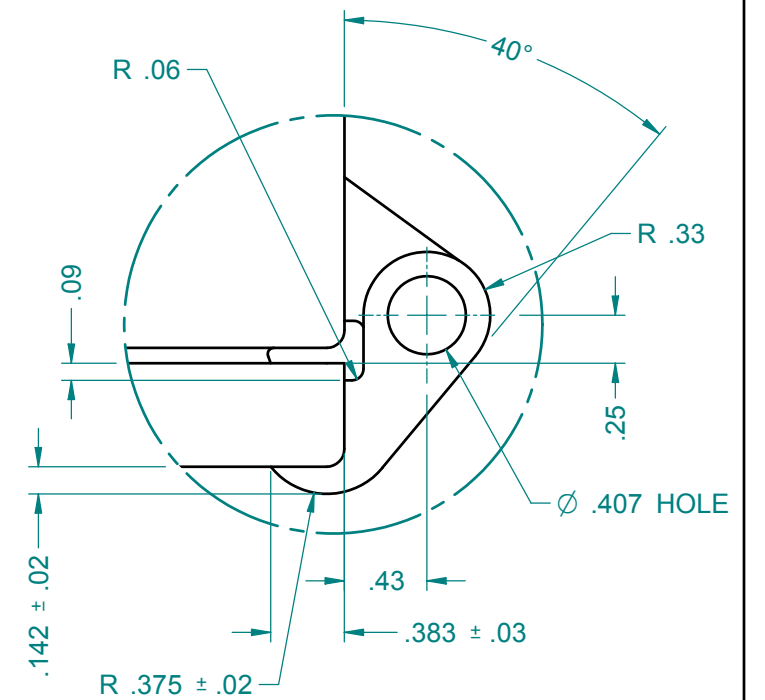
— CD WELD IN PLACE #10-32 x 1/2 LG" x .375" OD MILD STEEL
TAPPED PAD, CUTLASS STUDWELDING
PART #2201-9913, 8 'X' PLCS R .06
NO SUBSTITUTIONS ALLOWED.
FOR FIRST 20 UNITS ONLY.
THEN SS VERSION, #2202-9904



DETAIL 'S'

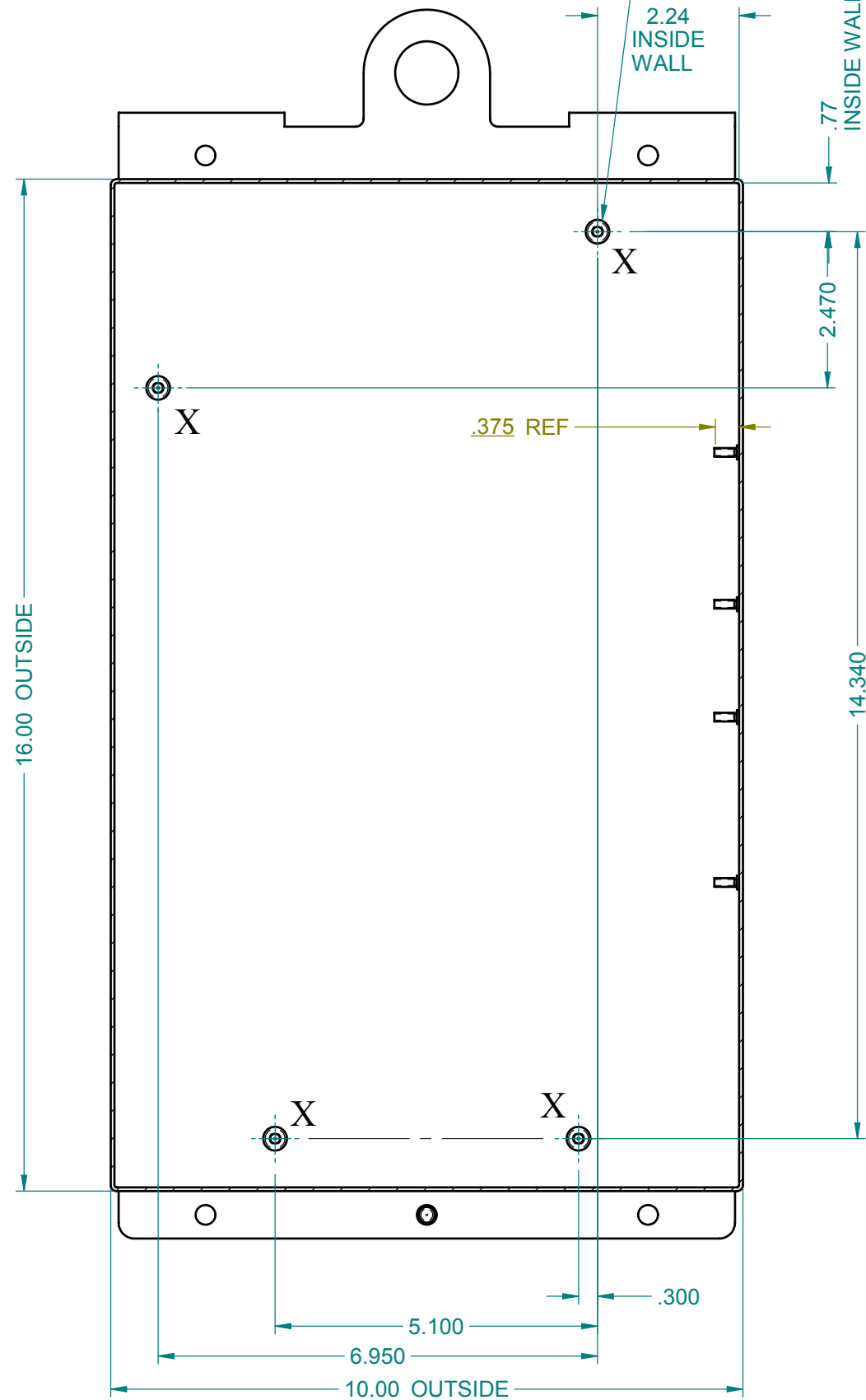
BOX LATCH
SCALE 2:1

LOCATING TABS PERMITTED ON LATCHES.
MATCHING HOLE IN DOOR & BOX MUST BE
COMPLETELY SEALED BY WELD. ALL EDGES
SHALL BE SMOOTH & WITHOUT TOOLING
MARKS

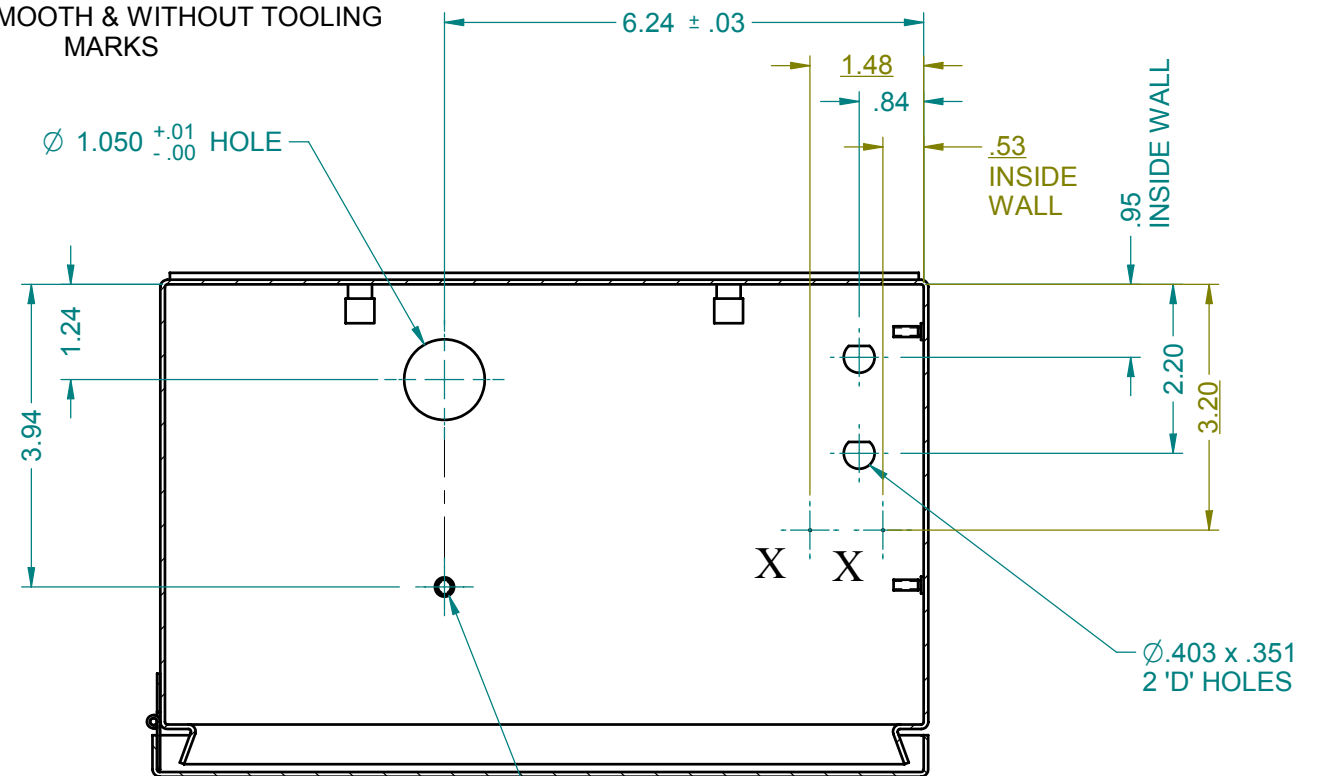


DETAIL 'T'

DOOR LATCH
SCALE 2:1



SECTION D-D



CD WELD IN PLACE #10-32 x 1/2" LG SS STUD
CUTLASS STUDWELDING PART #2012-0516
NO SUBSTITUTIONS ALLOWED

SECTION J-J