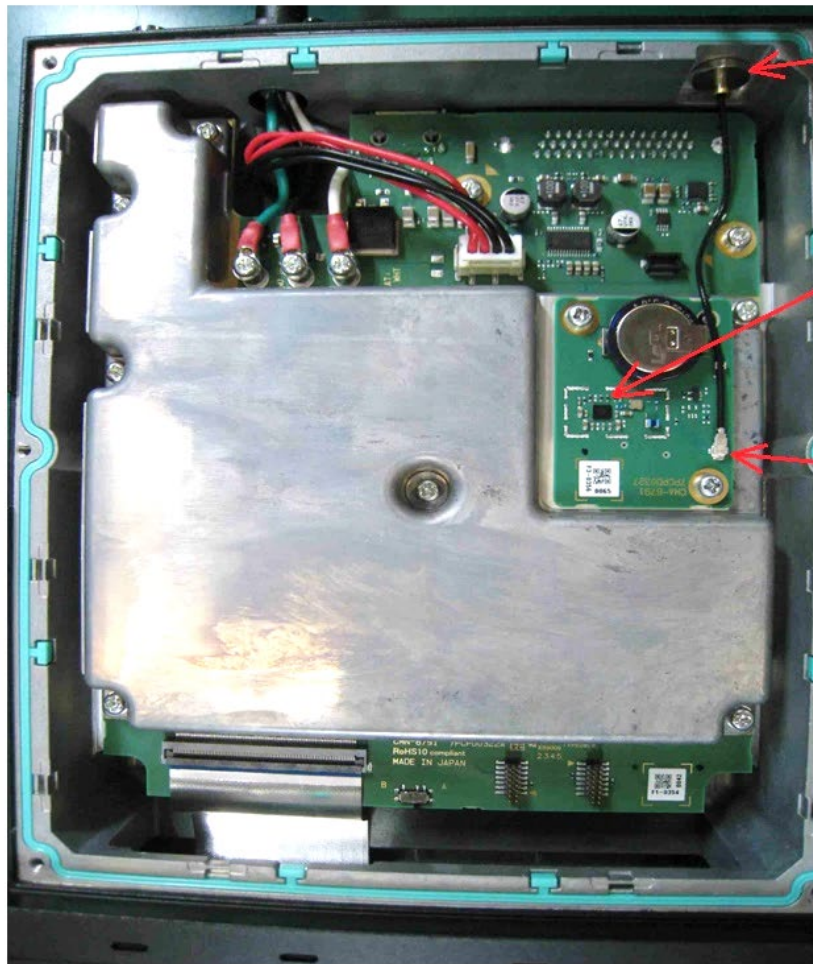


Photo 1: XL-85M – RF, GPS Boards in Chassis



XL-85M GPS antenna connector at the rear of chassis.

GPS chip (IC) on GPS Board

GPS antenna cable connected to GPS Board

Photo 2: GPS Board – Component Side

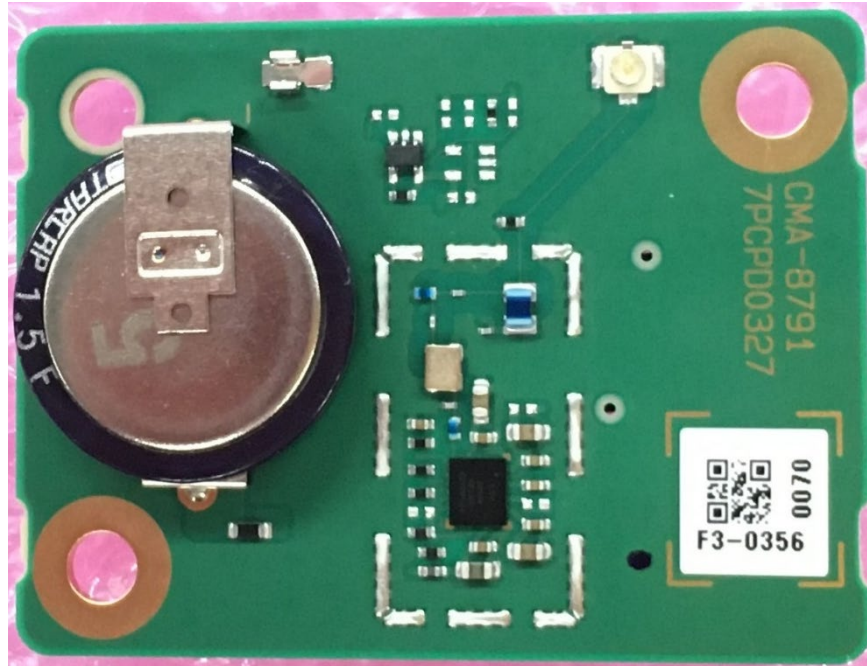


Photo 3: GPS Board – Solder Side

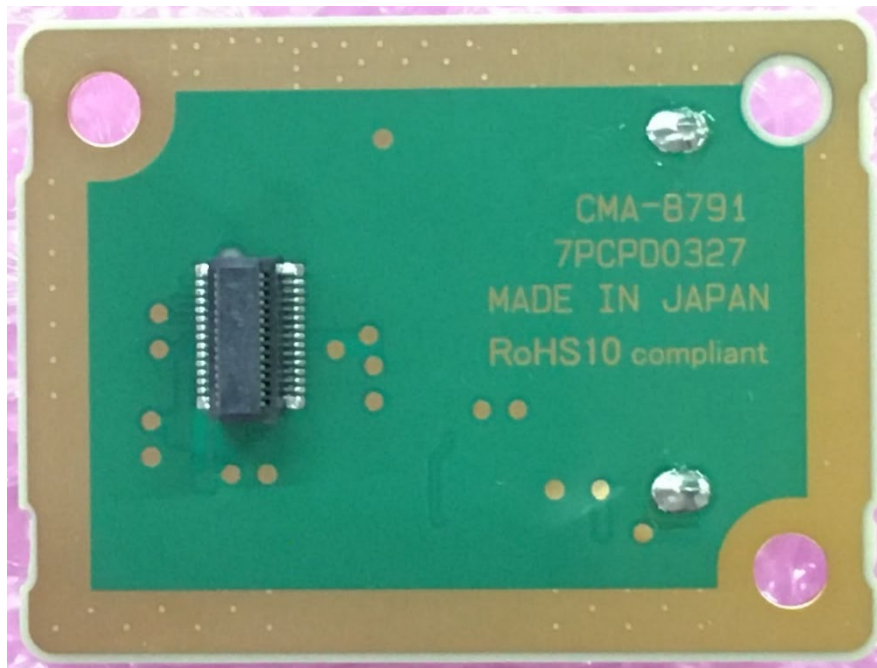




Photo 4: XL-85M RF Board with Power Amp in Chassis

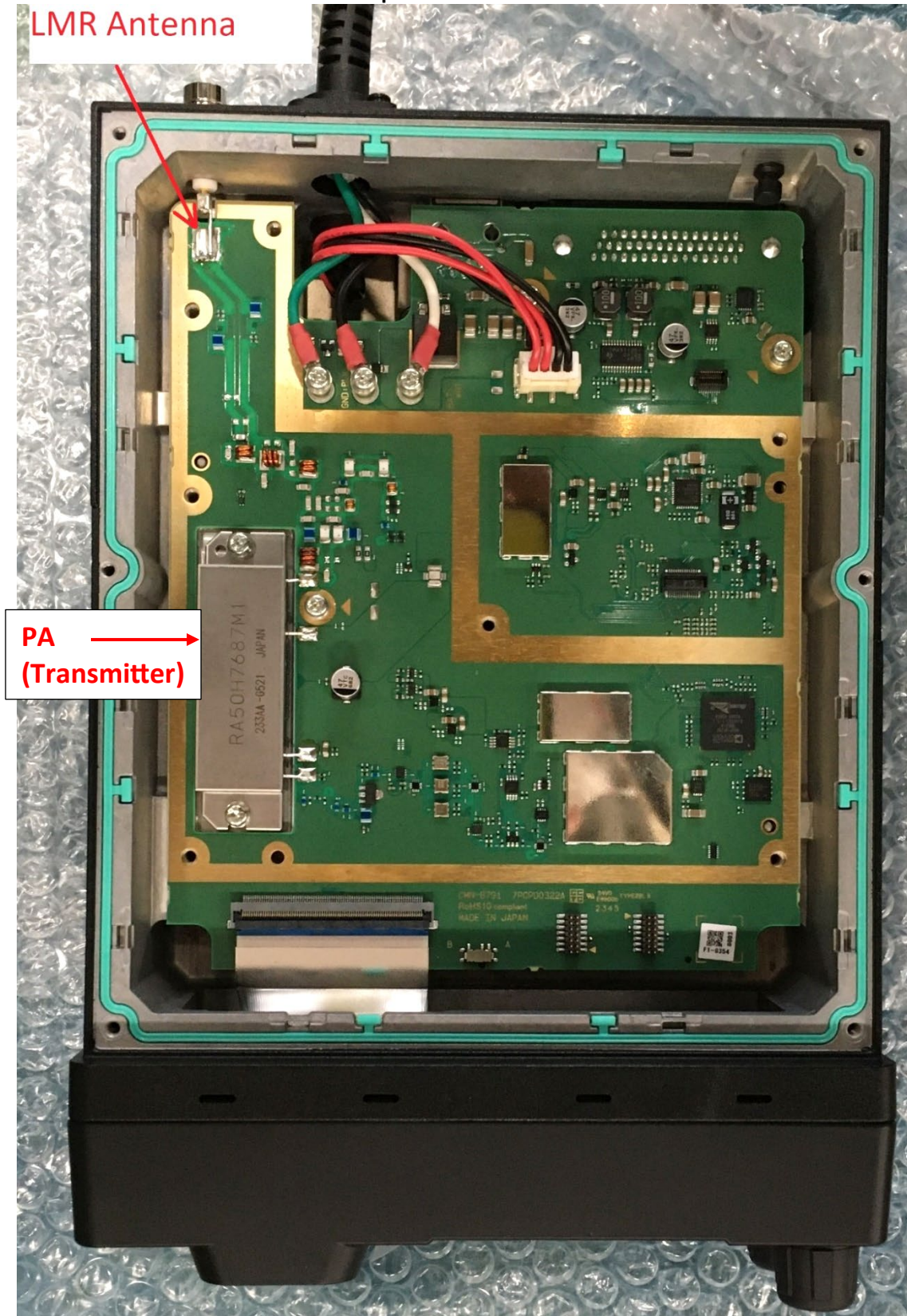




Photo 5: XL-85M RF Board – Component Side, Shielded

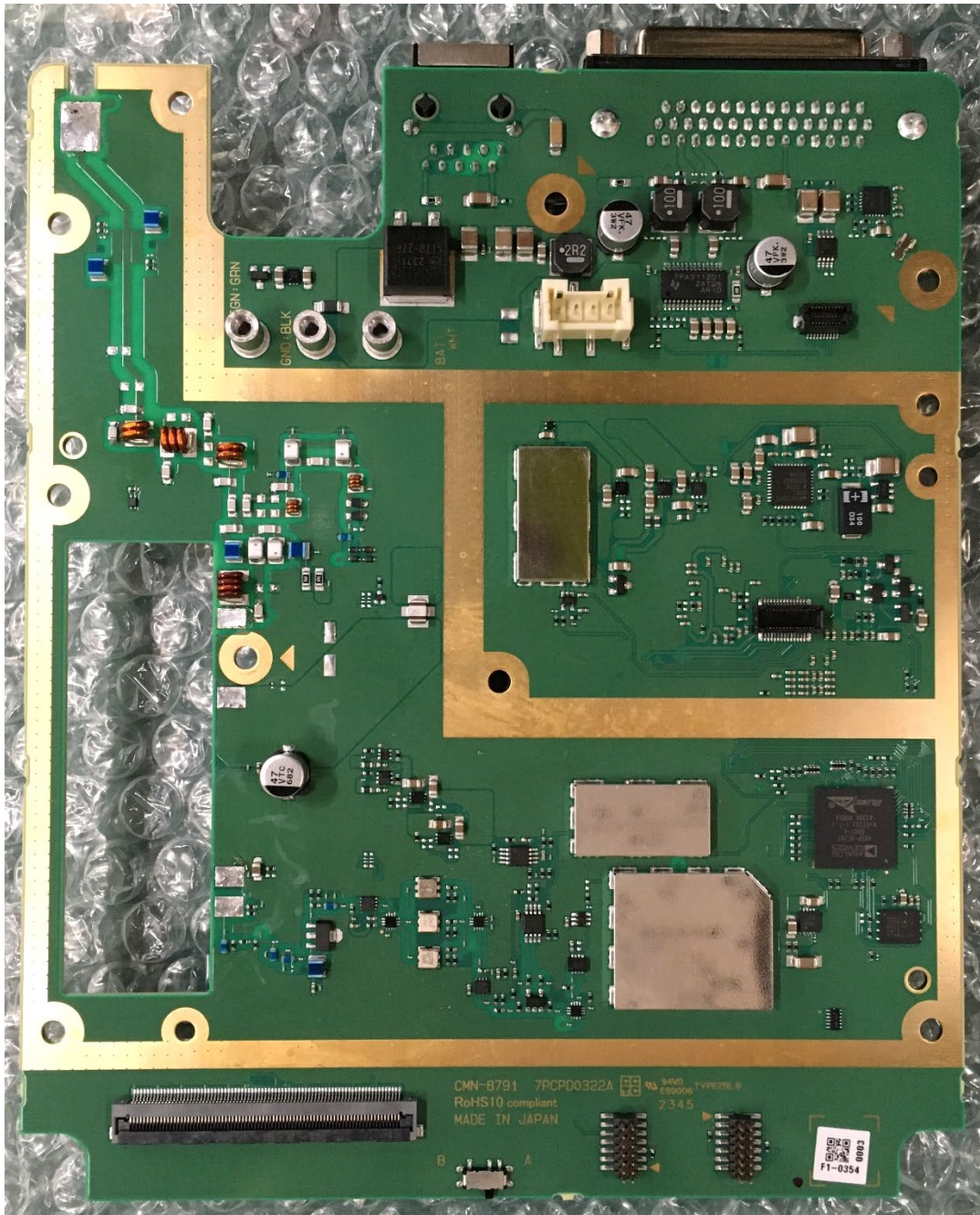


Photo 6: XL-85M RF Board – Component Side, Unshielded

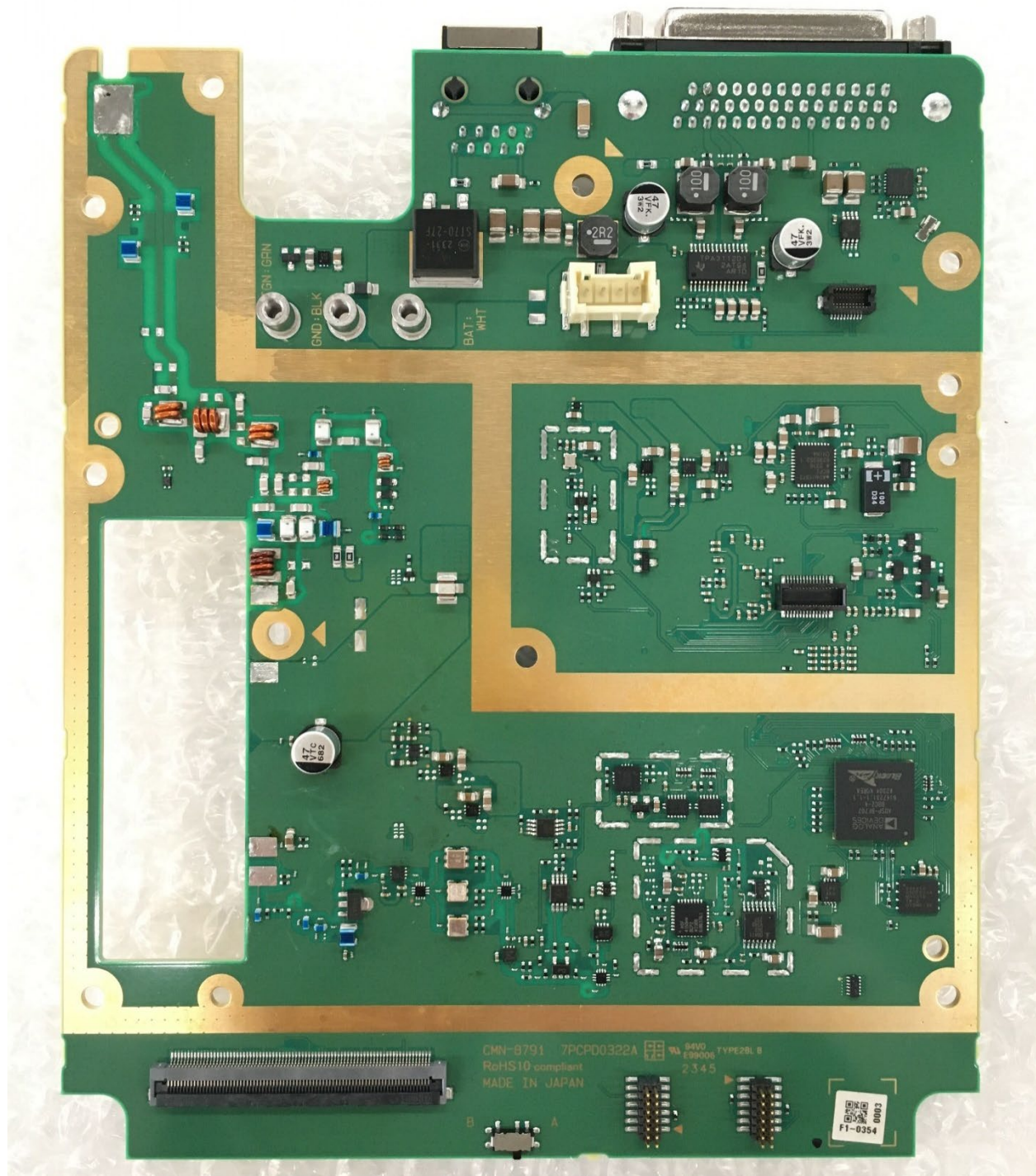




Photo 7: XL-85M RF Board – Solder Side, Shielded

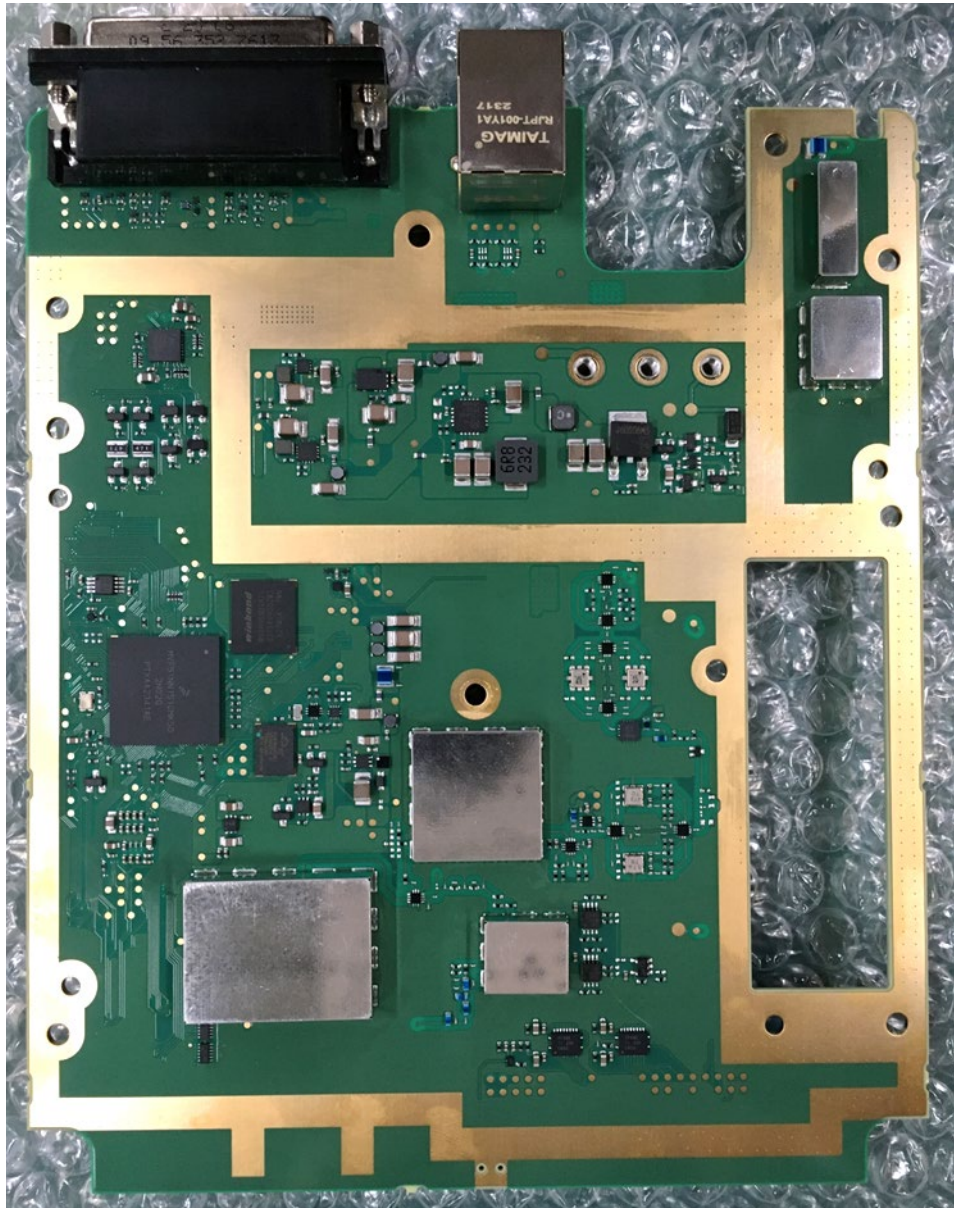
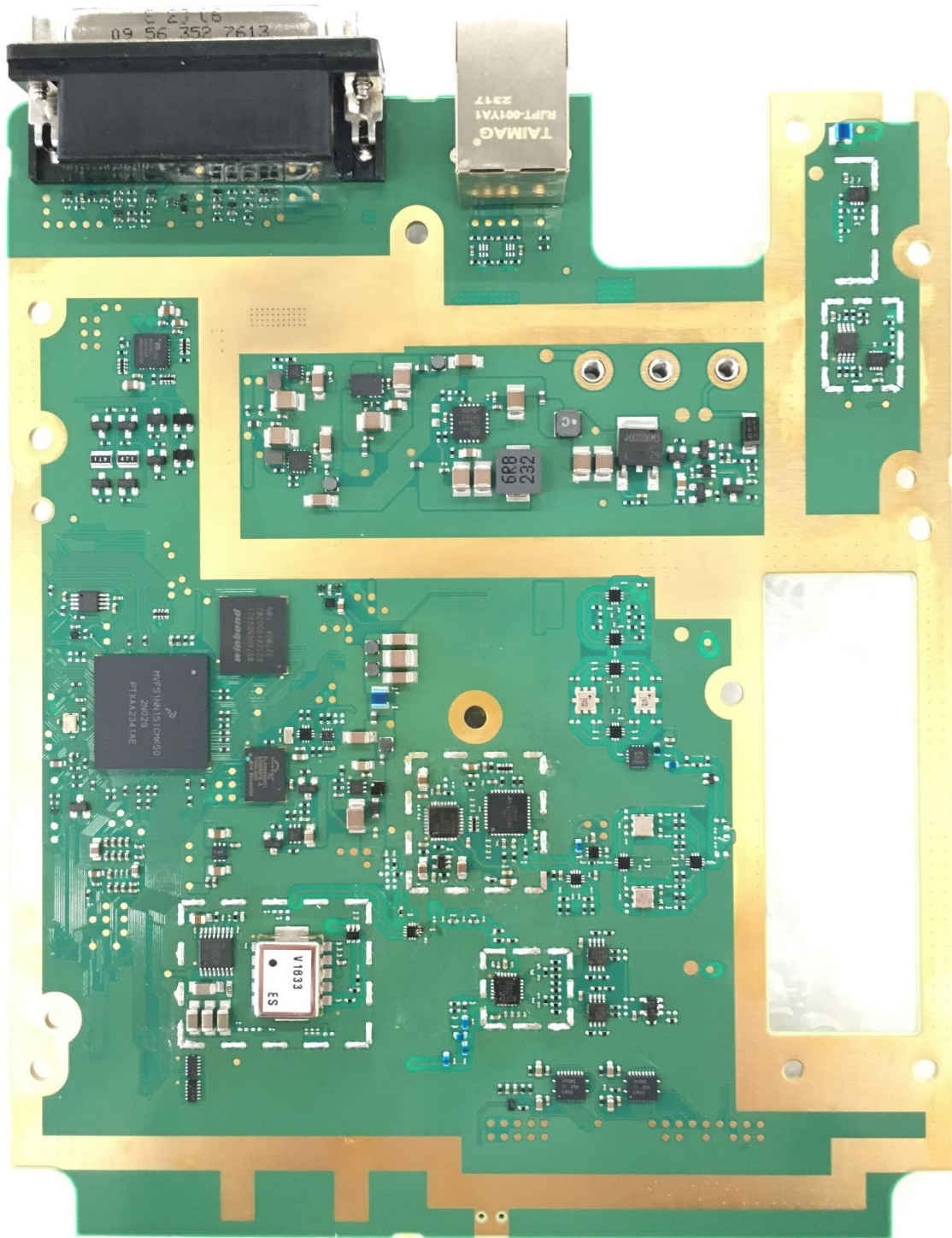


Photo 8: XL-85M RF Board – Solder Side, Unshielded





**Photo 9:** XL-CH2 Control Head (left) partially separated from XL-85M





**Photo 10:** XL-CH2 separated from XL-85M



Visible portion of BT/WiFi antenna when Keypad/LCD board inside Keypad front cover

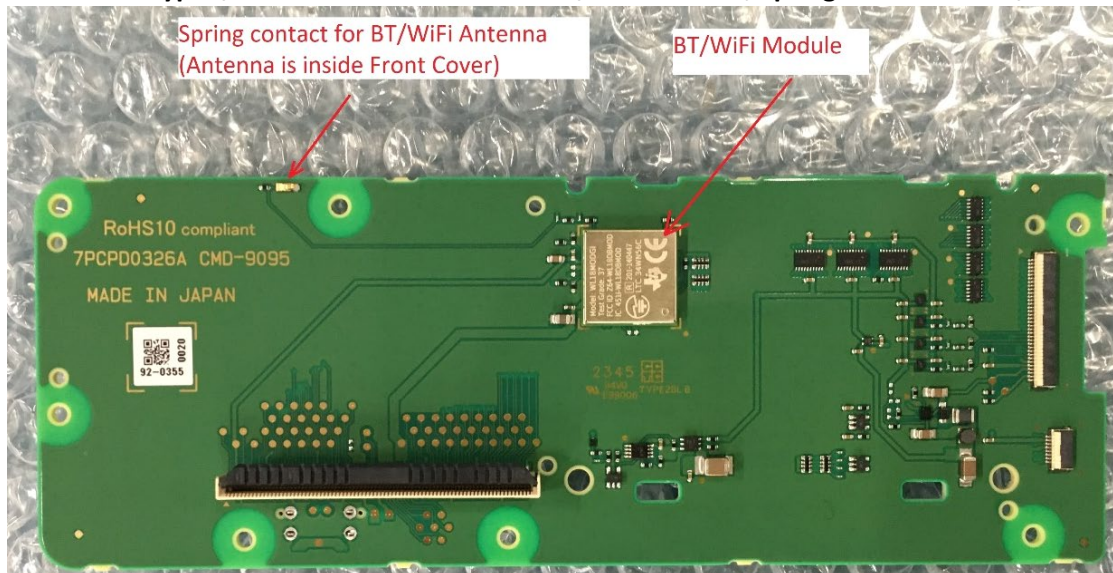
**Photo 11: BT/WiFi Antenna**, front and back views. Gold area indicates contact point with the spring-loaded pin on Keypad/LCD Solder Side connecting BT/WiFi antenna to PWB BT/WiFi trace (see Photo 9)



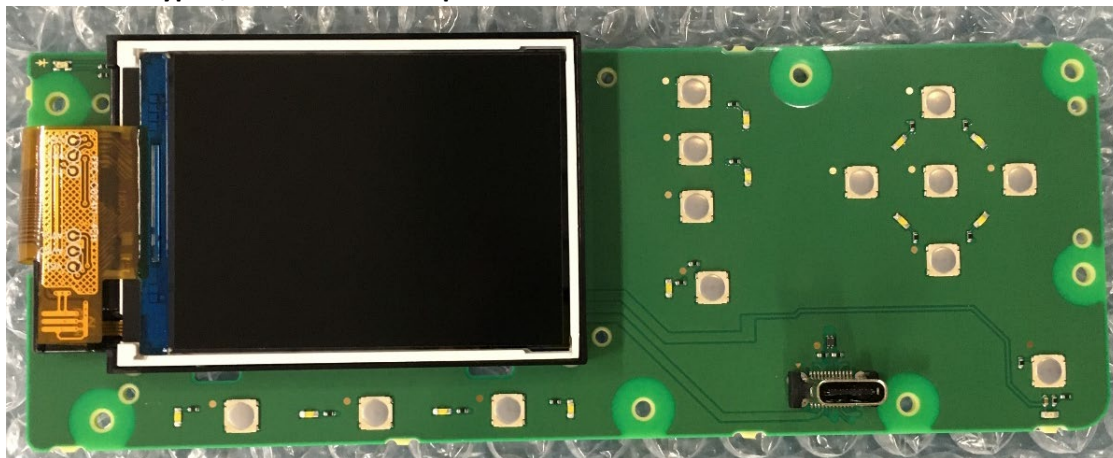
**Photo 12:** BT/WiFi antenna clipped onto plastic cover piece on back side of Keypad/LCD board



**Photo 13: Keypad/LCD Board – Solder Side - BT/WiFi Module, Spring Contact for BT/WiFi Antenna**



**Photo 14: Keypad/LCD Board – Component Side with LCD**



**Photo 15: Keypad/LCD Board – Component Side without LCD**

