

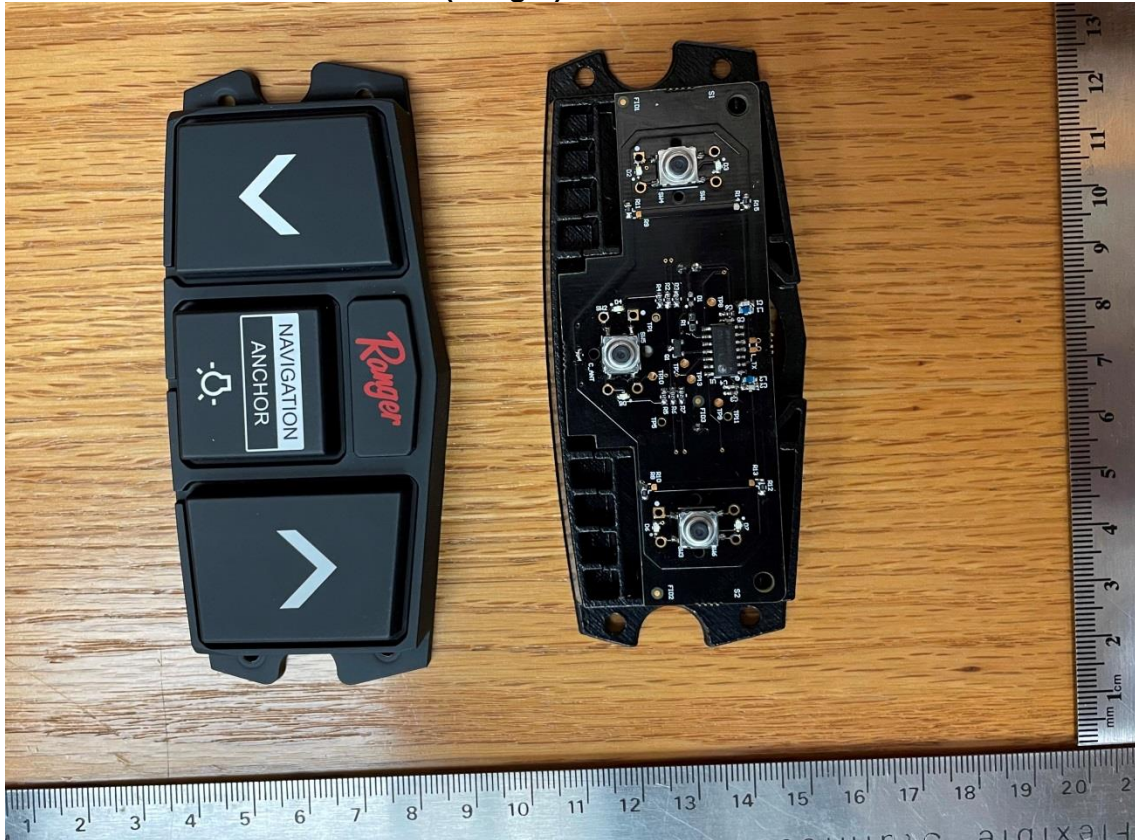
Enclosure Battery Cover Removed (Ranger)



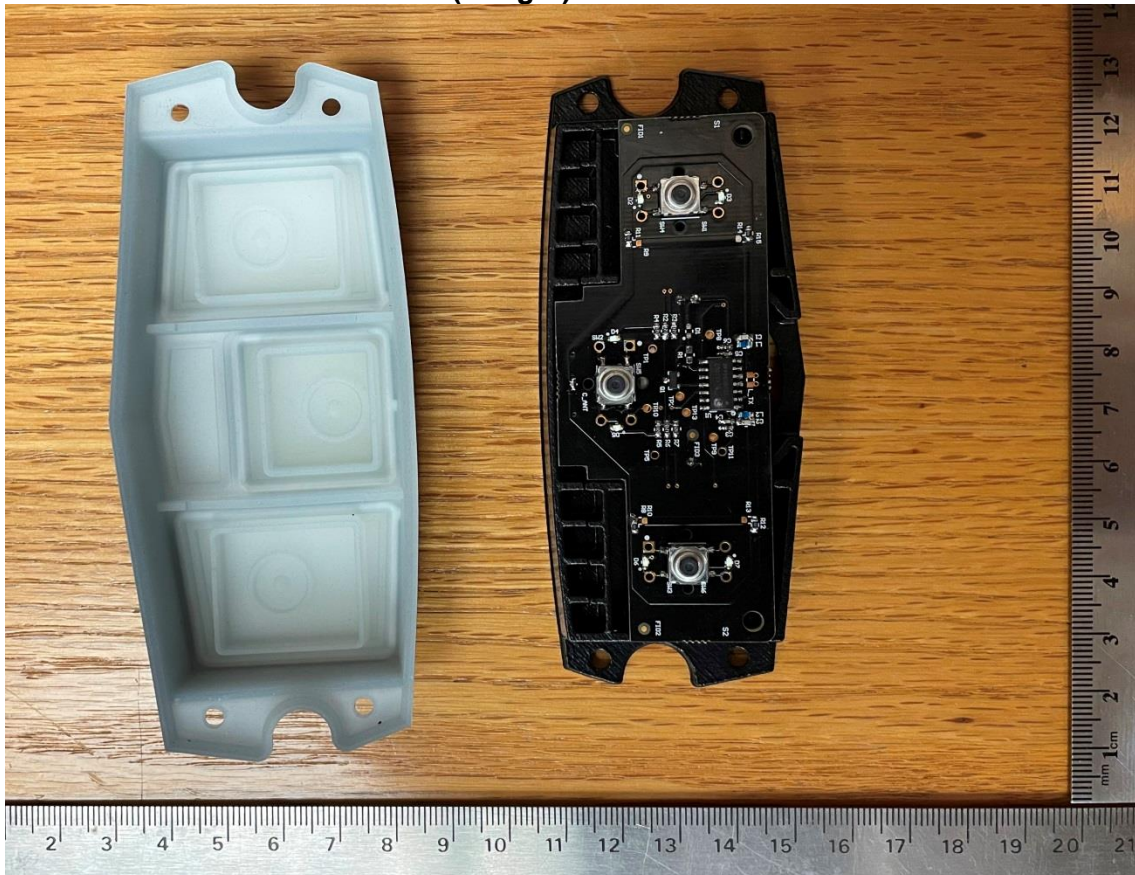
Enclosure Top Cover Removed (Ranger)

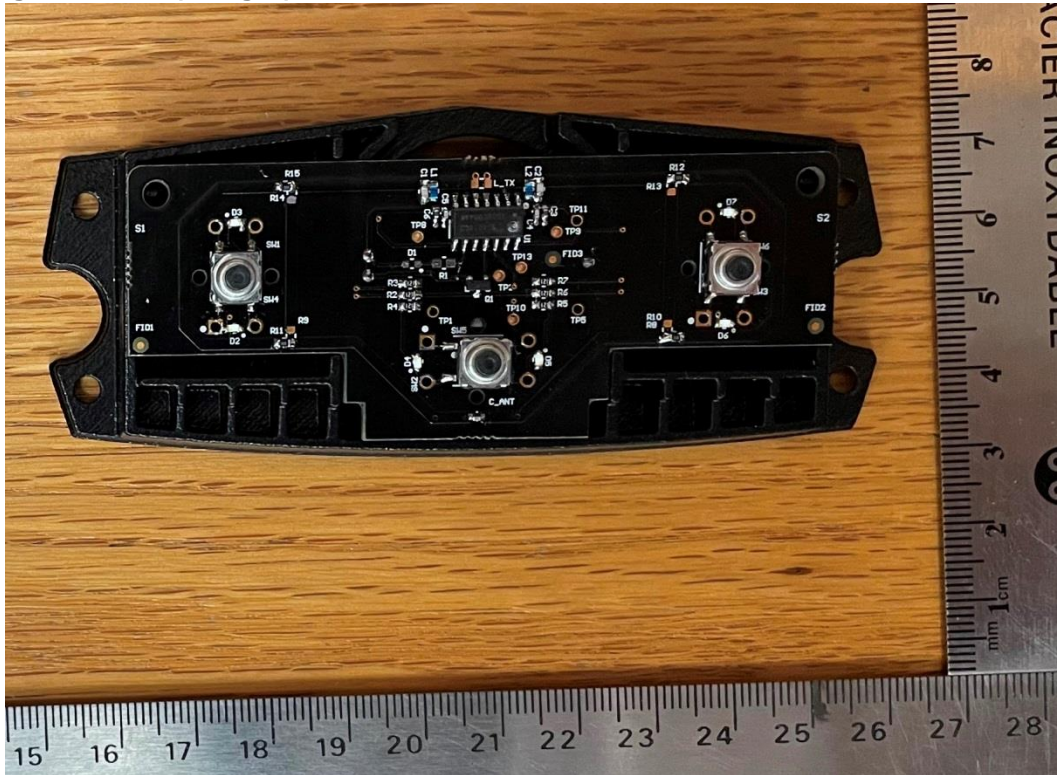


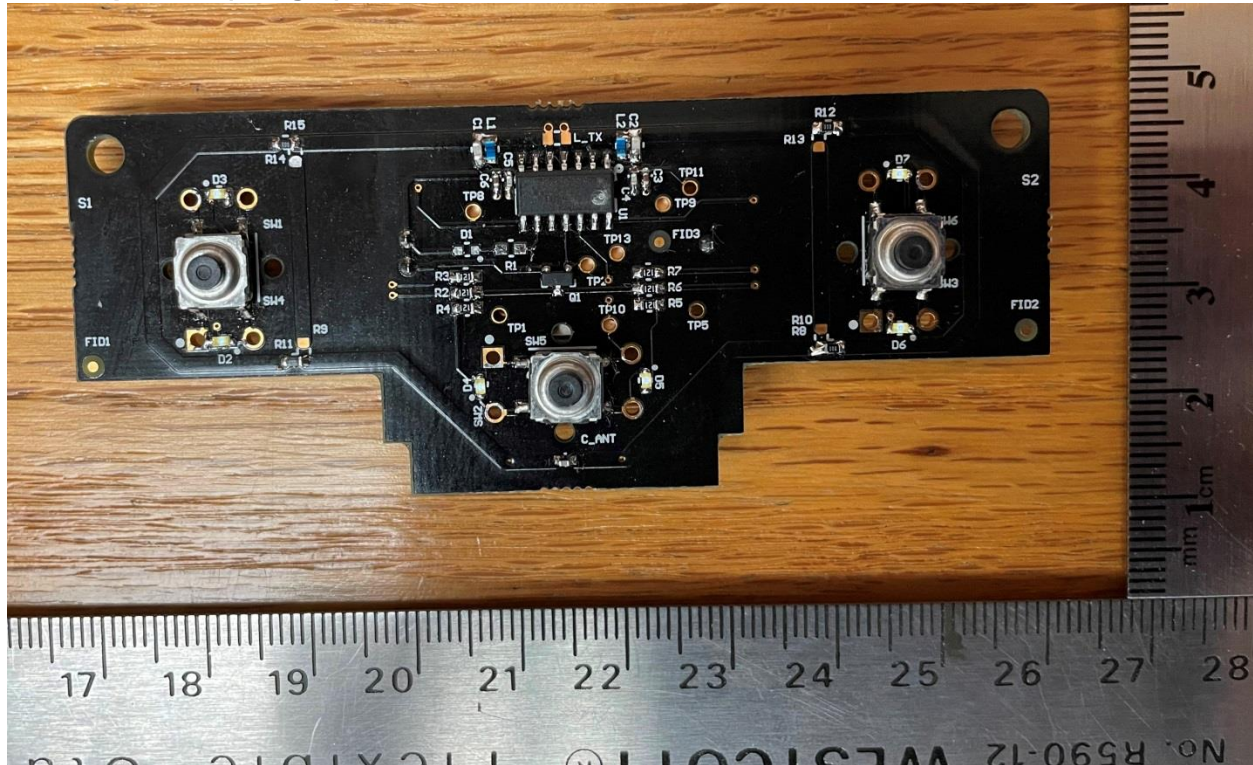
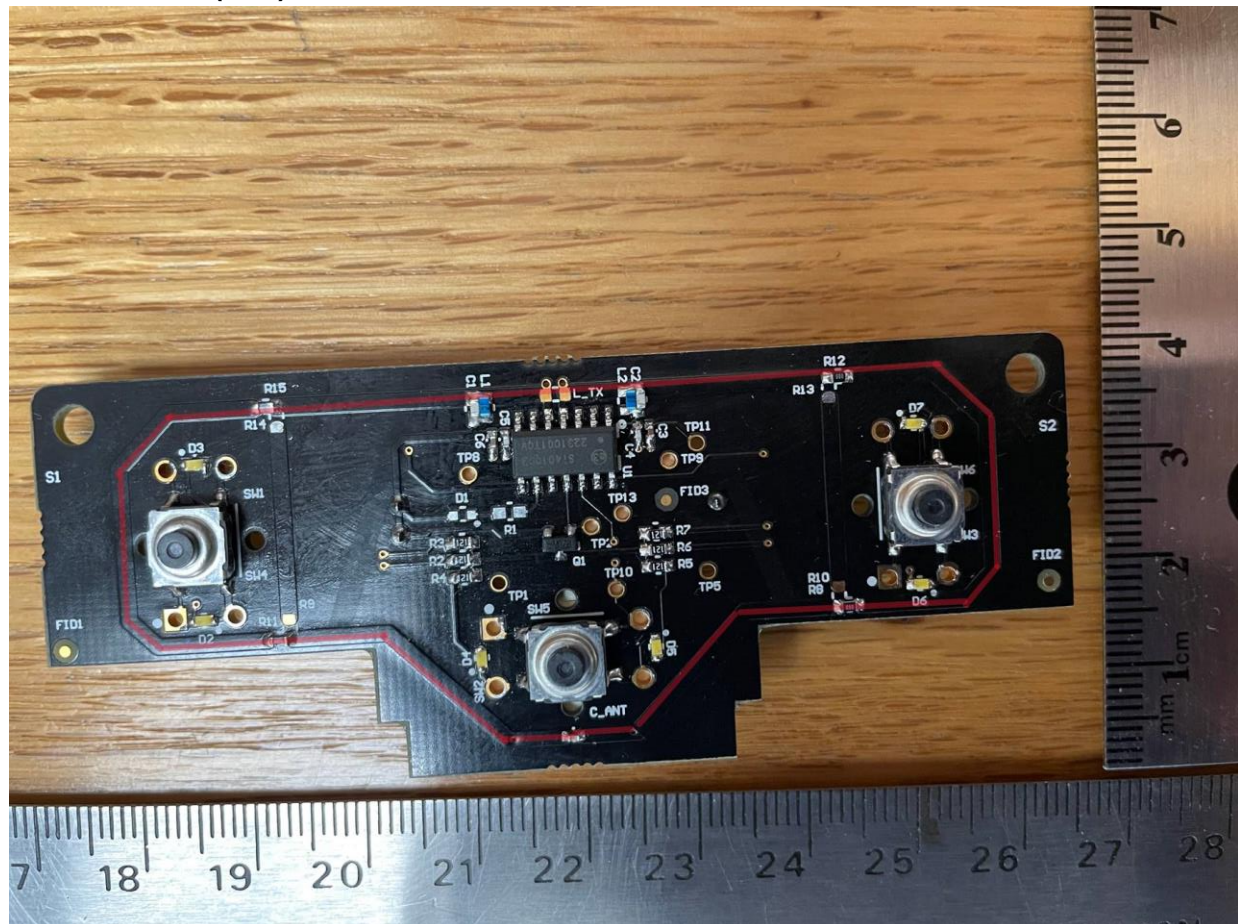
Enclosure without silicone buttons (Ranger)



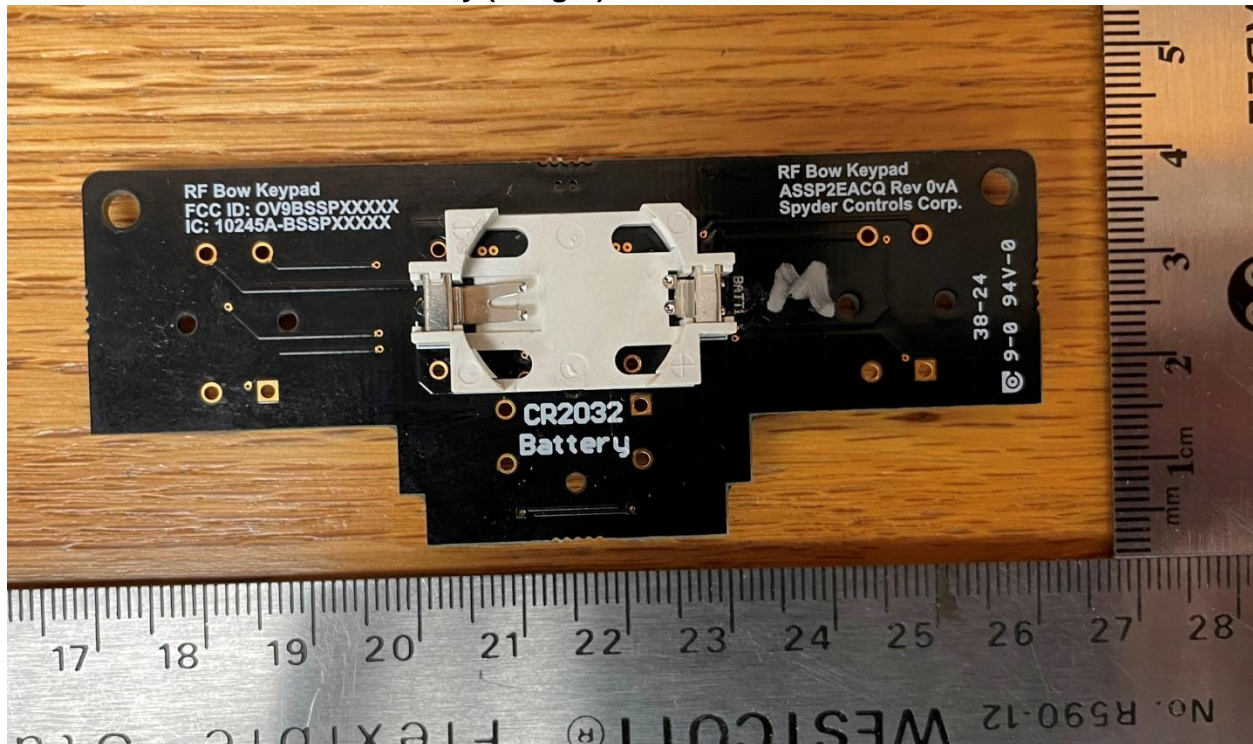
Inside view of silicone button cover (Ranger)



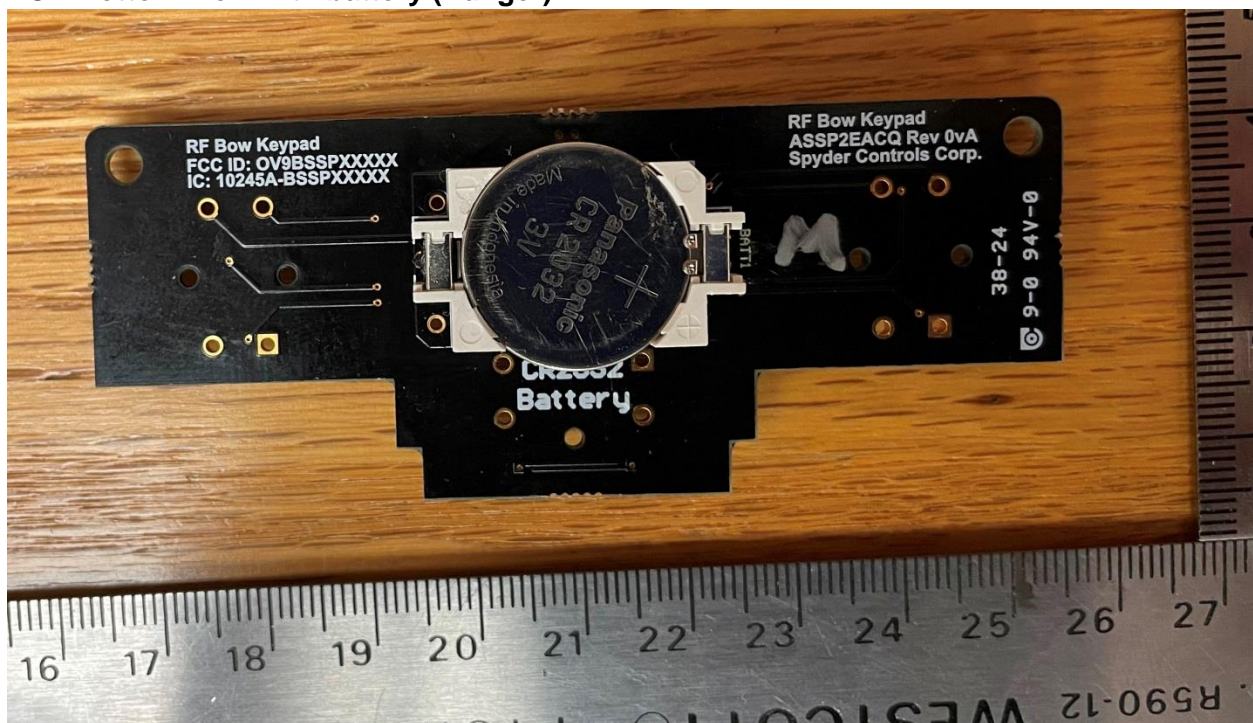
Housing with PCB (Ranger):**Housing with out PCB**

PCB Top View: (Ranger)**Antenna Trace (Red)**

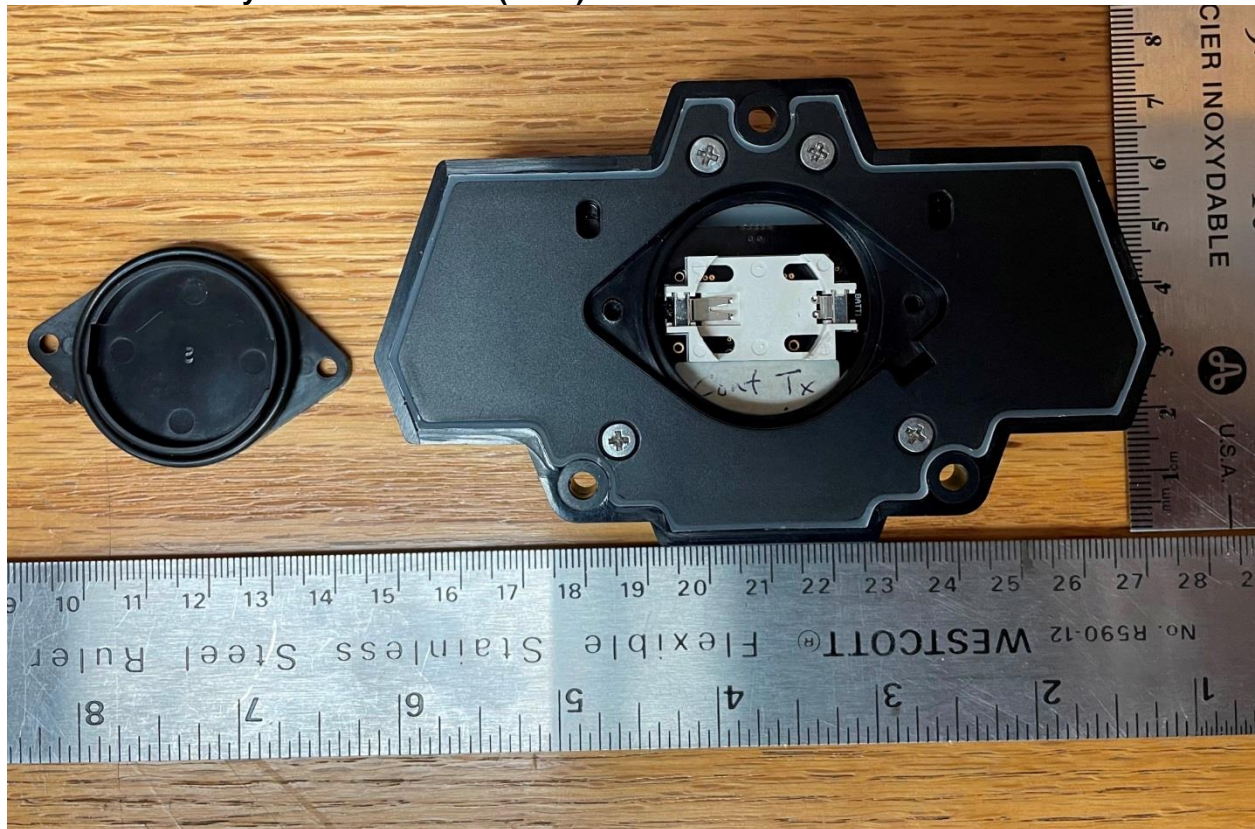
PCB Bottom view without battery (Ranger)



PCB Bottom view with battery (Ranger)

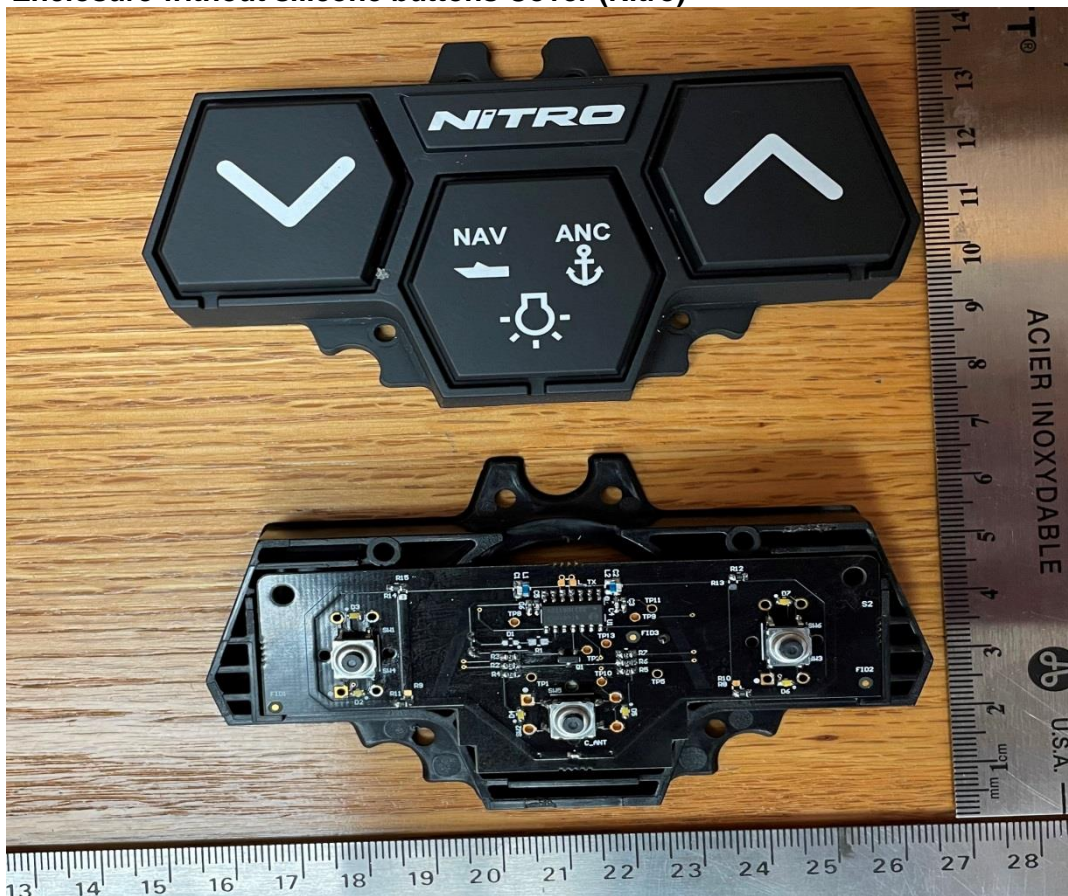


Enclosure Battery Cover Removed (Nitro)

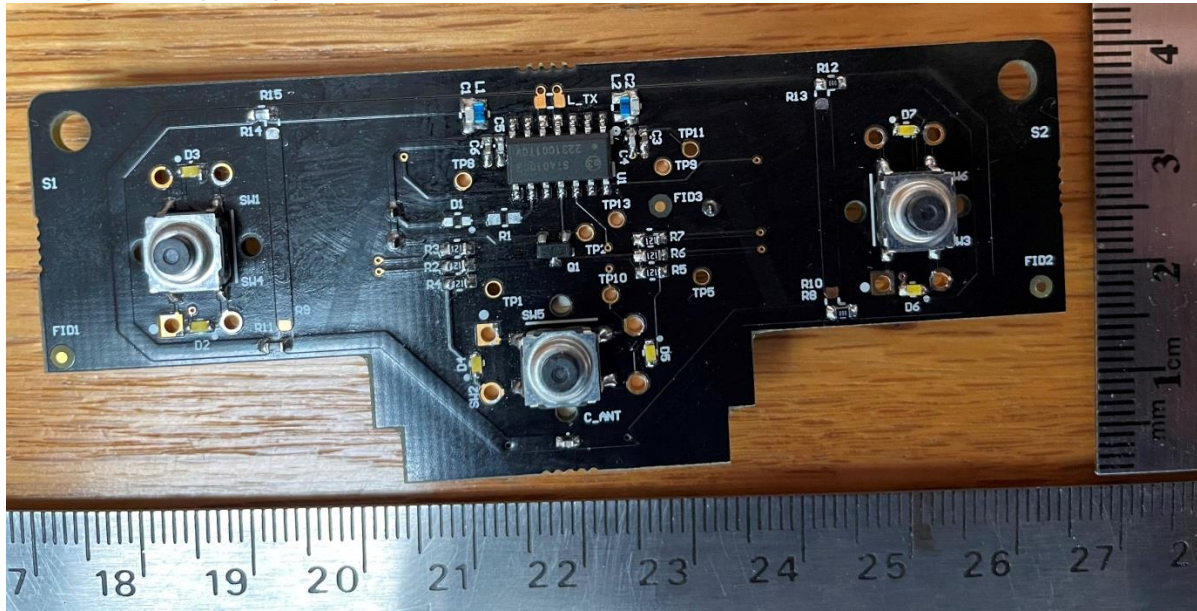
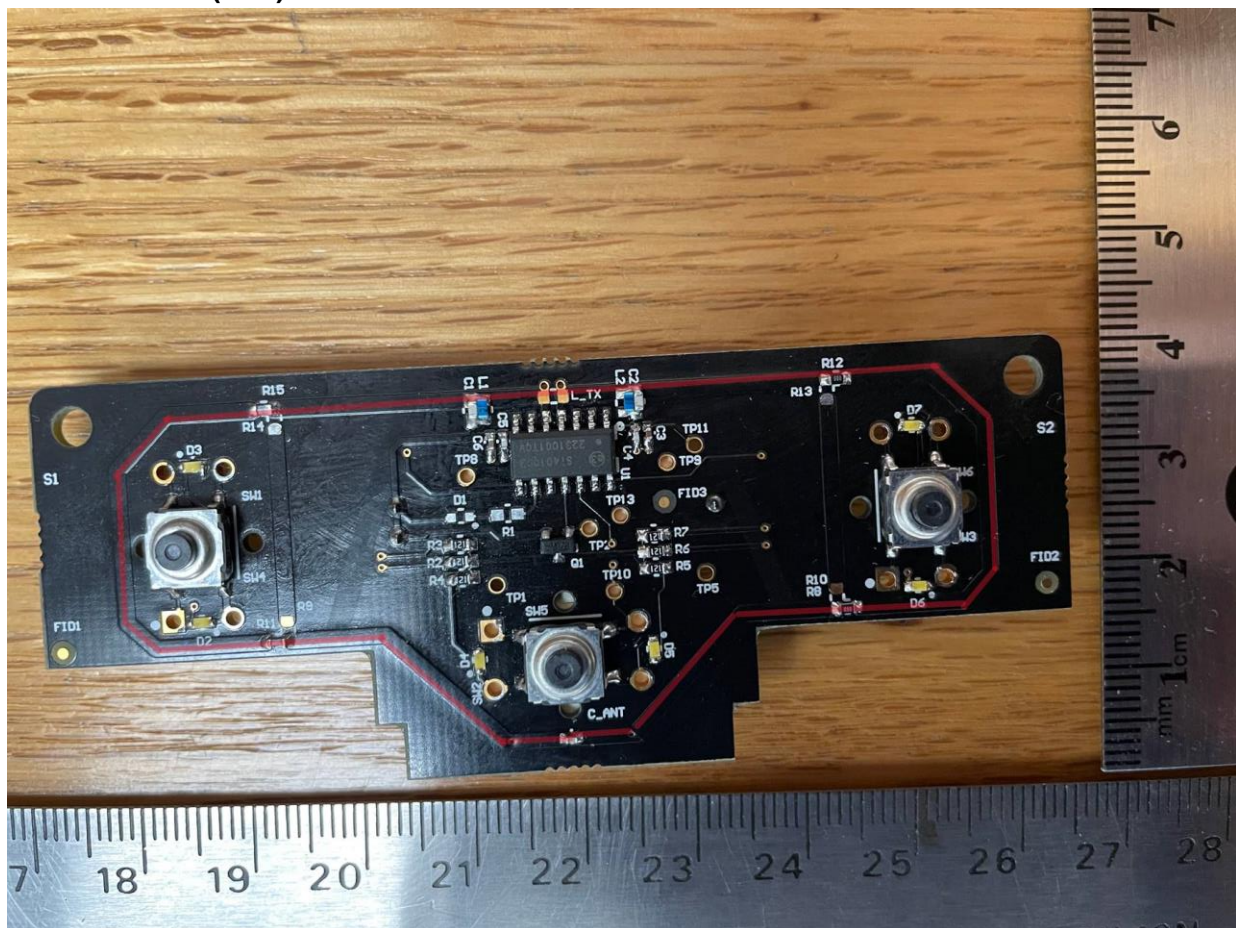


Enclosure Top Cover Removed (Nitro)

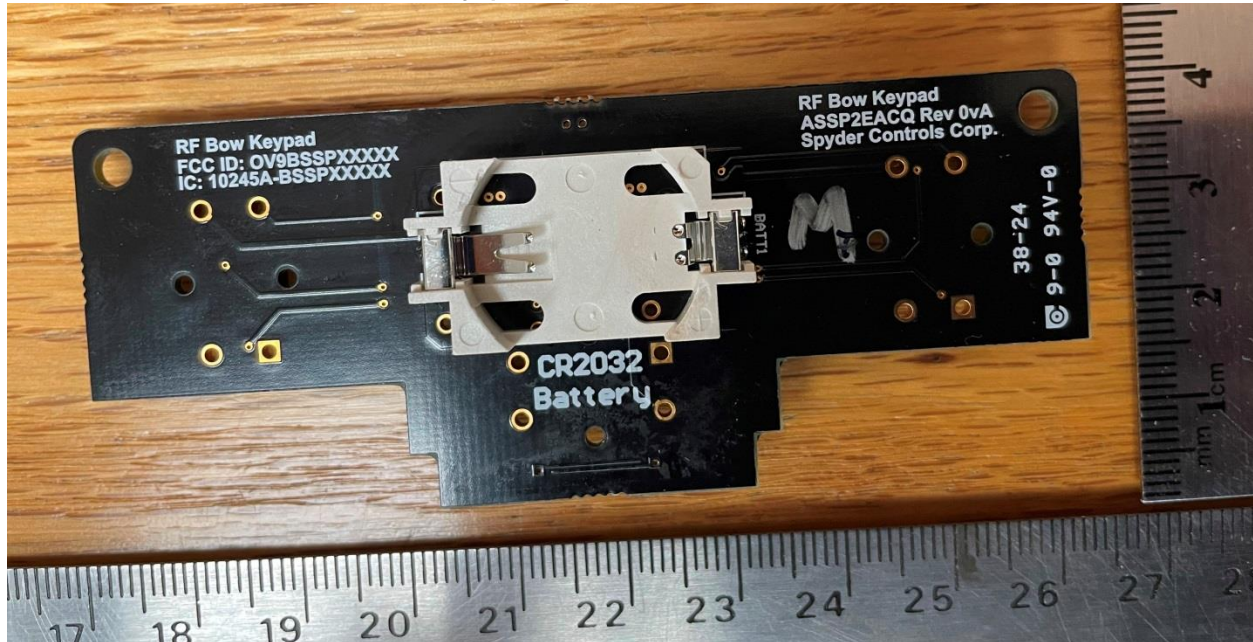


Enclosure without silicone buttons Cover (Nitro)**Inside view of silicone button/Top cover (Nitro)**

A black, irregularly shaped plastic component, possibly a mold or a part of a machine, is shown on a wooden surface. The component has a large central circular hole and several smaller holes. It is placed next to a ruler for scale, which shows measurements in centimeters and millimeters. The ruler indicates the component is approximately 10 cm wide and 5 cm high.

PCB Top View: (Nitro)**Antenna Trace (Red)**

PCB Bottom view without battery (Nitro)



PCB Bottom view with battery (Nitro)

