

**** Causes for exceeding time limit:**

1. Transmitter is off
2. More than two transmitters nearby
3. Off air RF interference

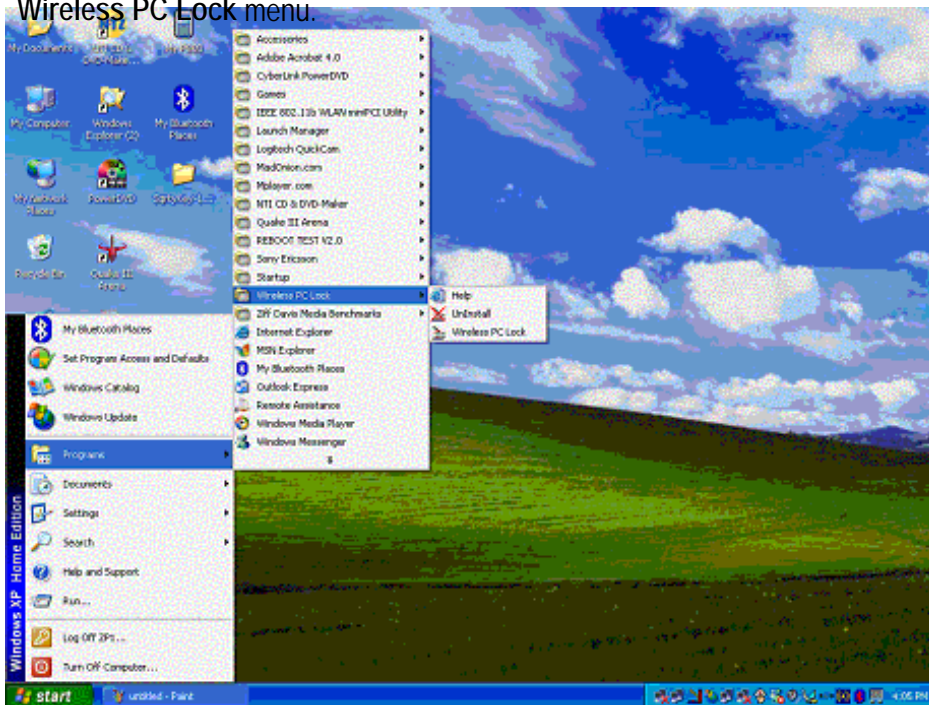
**** Actions:**

- Turn on transmitter and make sure its LED blinks
 Follow recognize procedure to re-recognize
 Move transmitter closer to receiver until receiver's LED blinks

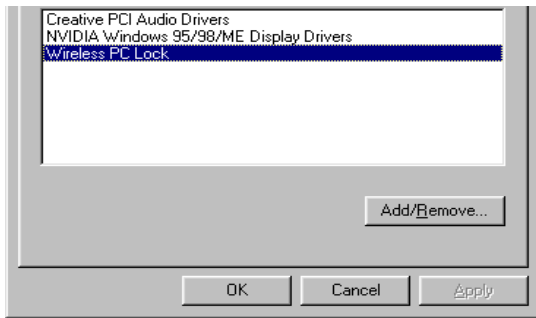
Software Removal

There are two ways to uninstall the Wireless PC Lock software:

1. Click the **Start** button, select the **All Programs** menu button, and then select the **Uninstall** option in the **Wireless PC Lock** menu.



2. Click the **Start** button, select the **Control Panel** menu button, click the **Add or Remove Programs** icon, and then select the **Window PC Lock** program in the **Add/Remove** menu.



User's Guide

1. The following taskbar icon indicates normal operation mode.



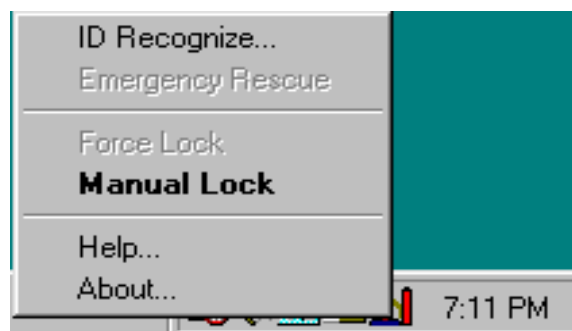
2. The following taskbar icon indicates computer lock-down mode.



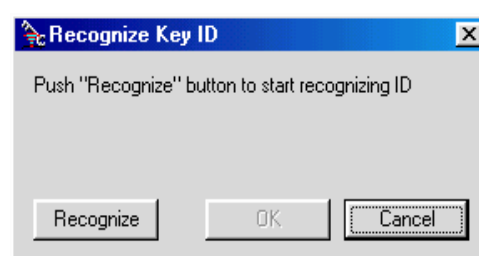
** Lock-down mode :

- a. When the user walks away from the computer beyond the effective distance threshold, The receiver loses the transmitter signal and thus the computer enters lock-down mode.
- b. The transmitter under turn – off status.

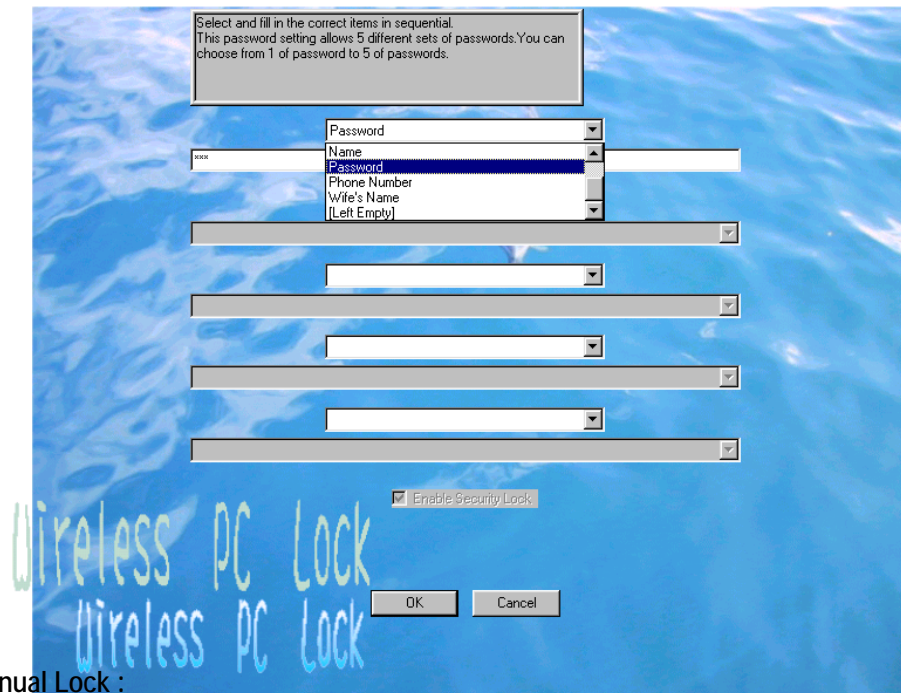
3. Use the right button of mouse to open the context sensitive menu to select the **ID Recognize**, **Emergency Rescue**, **Manual Lock**, **Force Lock**, **Help** and **About** functions.



- a. **ID Recognize** : ID Recognize is required every time a new transmitter is used.



b. Changing Password:



c. Manual Lock :

In any situation, click this button to force the computer to switch to **Lock-down Mode** by a valid password.

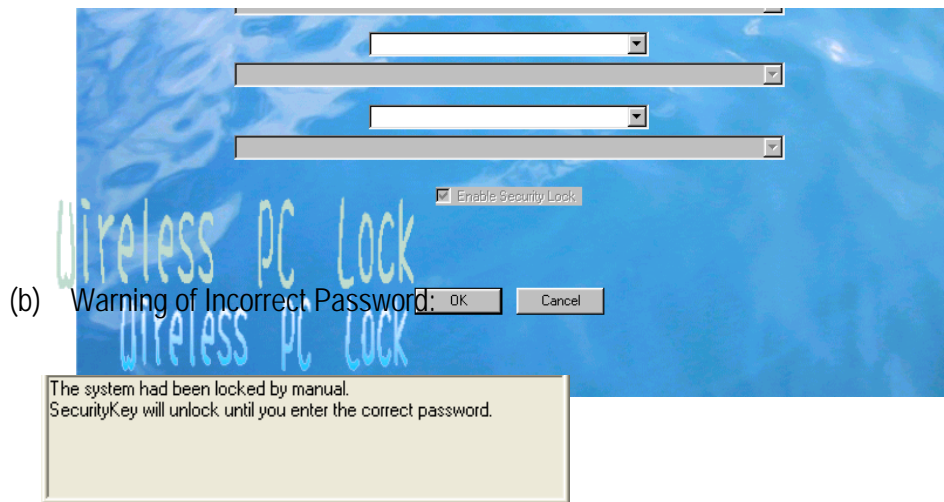
d. Force Lock

- (1). This function forces the computer to enter the **Lock-down Mode** within 10 seconds, ignoring any signal from the transmitter during that period of time.
- (2). A short-cut is shown in the following illustration.
By moving the mouse to the Wireless PC Lock taskbar icon and double-clicking the left mouse button, the Force Lock function is activated.

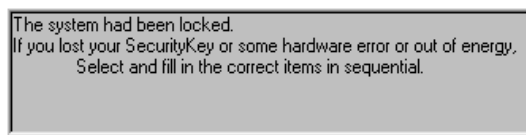


e. Some typical screen displays:

- (a) Normal Mode:



(c) Warning of Missing Hardware:



Frequently Asked Questions

Q1 : Why can the computer not be locked?

A1 : The locking range may be enhanced by electro-magnetic interference in the surrounding area.
Use the "Manual Lock" / "Force Lock" / "special function key" to enter Lock-down Mode by a valid password.

Q2 : Does the Wireless PC Lock support any computer operation systems ?

A2 : No. The computer operation system must offer USB port support,
and this driver support for operation system in Windows 98SE / ME / 2000 / XP.
If the computer does not have a USB port, please purchase a USB interface card
and Install the card in computer.

Q3 : Can Wireless PC Lock affect or terminate other running software programs?

A3 : No. Although the screen is locked, the other running programs remain unaffected.

Q4 : Can the locking function be activated simply with the installation of the software driver?

A4 : Yes. However, the hardware must first be successfully installed.

Q5 : How many alpha-numeric characters are accepted in the password setting screen?

A5 : 125 characters maximum per password.

Q6 : Why does the battery die so quickly?

A6 : One CR2032 (3V) battery should be able to support 2000 hours of continuous usage.
Due to the self leakage of the battery itself, please pay special attention to the expiration date of the battery itself.

Q7 : Can multiple computers be controlled by a single transmitter?

A7 : Yes, as long as both the receiver hardware and software driver were installed in every computer and the transmitter ID was ratified on each computer.

Q8 : Why does the transmitter unable to control the computer even after the ID recognition has been completed ?

A9 : There may have been more than one ID recognition process on-going during the same time.
Follow the **ID Recognize** procedure and click the " **Rerecognize** " button again.

Notes

- (1) During normal operation, the minimum locking range threshold may be affected by many factors such as nearby metallic material, RF interference, etc..
- (2) Avoid exposing the product to excessive moisture or vibration.