

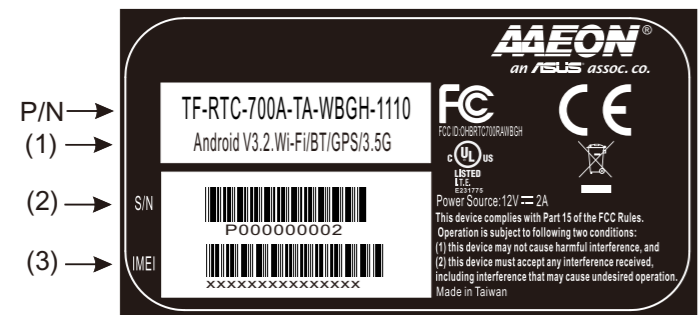
**3G Version:**  
**P/N:TF-RTC-700A-TA-WBGH-1110**  
 (1)Android V3.2.Wi-Fi/BT/GPS/3.5G  
 (2)S/N:依研揚標準編碼原則  
 (3)IMEI:需讀取3G card QR code(15碼)

**Wi-Fi Version:**  
**P/N:TF-RTC-700A-TA-WBG-1110**  
 (1)Android V3.2.Wi-Fi/BT/GPS  
 (2)S/N:依研揚標準編碼原則  
 (3)IMEI:無3G不需印

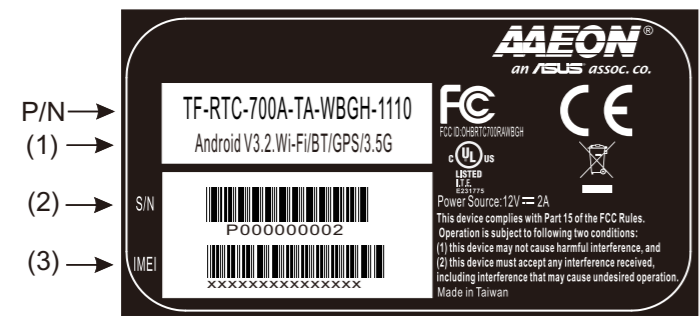
\* Barcode: Code 128  
 \* Font : Arial

**Without printing Scale 2:1**

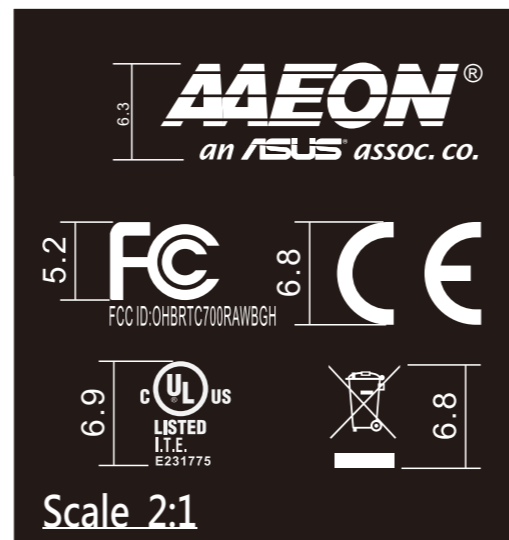
- NOTES:**
- TOLERANCES TO BE  $\pm 0.2$  mm.
  - THE ARRANGEMENT OF LAMINATE WITH MATERIAL THICKNESS AS FOLLOWS:
    - 1. MYLAR FILM(MAT) 0.025+/-10%
    - 2. ACRYLIC ADHENSIVE 0.020+/-10%
    - 3. SYNTHESIS FILM 0.075+/-10%
    - 4. MYLAR FILM(MAT) 0.024+/-10%
 Total:0.144+/-10%
  - THE LINES ARE 0.5 mm WIDE.
  - COLOR: CHARACTERS, LOGOS AND LINES SHALL BE WHITE, BASE TO BE BLACK.
  - APPROVED VENDOR MUST BE UL RECOGNIZED
  - LETTERING SHOULD BE CLEAR-CUT. SURFACE TO BE FREE OF DEFECT.



**3G version**



**Wi-fi version**



**Scale 2:1**

**Rating Barcode Label**

GENERAL TOL. >0 ±0.1 >10 ±0.2 >50 ±0.3 >200 ±0.5 >500 ±0.8	MATERIAL:As notes	PART No. 2099XXXXXX			
	SPEC.: N/A	DWG No. 2099XXXXXX			
ANGLE TOL. ±0.5°	FINISH:	APPROVED	CHECKED	DESIGNED	NAME Rating barcode label for 700A
	UNIT:MM			Astin	MODEL No. RTC - 700A
	SCALE: 1:1		2012.6.26	2012.6.26	REV R1 SHEET: 1 / 1



TF-RTC-700A-TA-WBGH-1110  
Android V3.2.Wi-Fi/BT/GPS/3.5G

S/N



P000000002

IMEI



XXXXXXXXXXXXXXXXXX

**MEON**  
an ASUS assoc. co.



FCC ID: 019RTCT019AWBGH



LISTED  
LITE  
EQUIPMENT



Power Source: 12V 2A

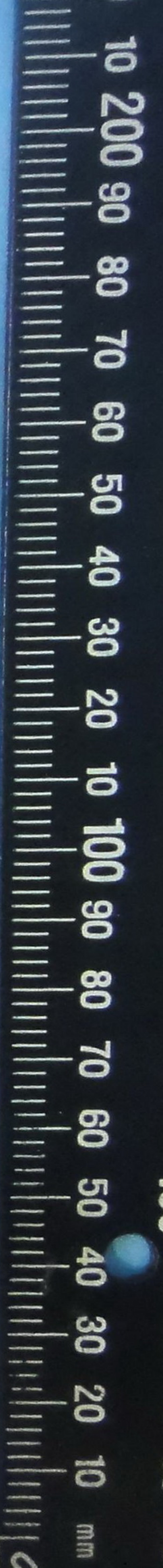
This device complies with Part 15 of the FCC Rules.

Operation is subject to following two conditions:

(1) this device may not cause harmful interference, and

(2) this device must accept any interference received, including interference that may cause undesired operation.

Made in Taiwan



BUDDY