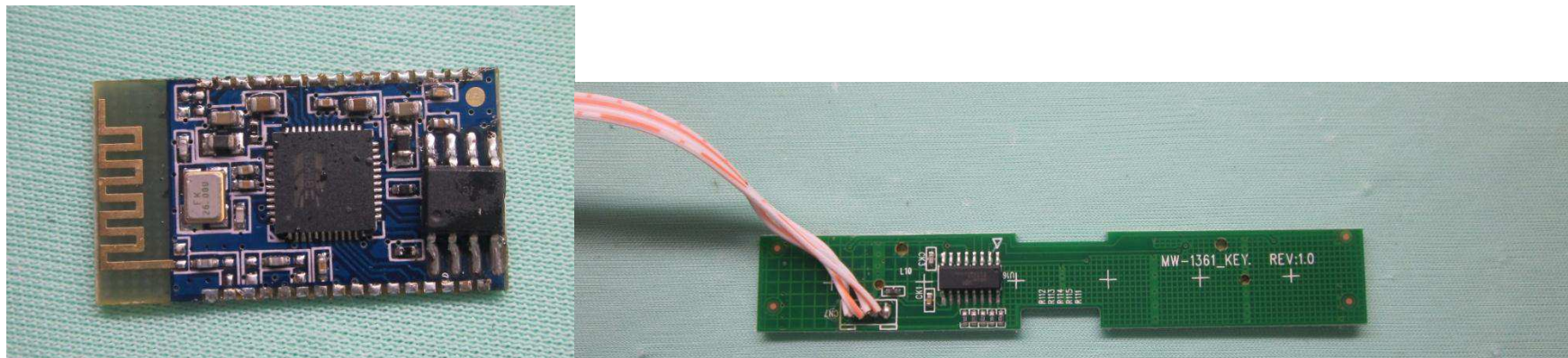
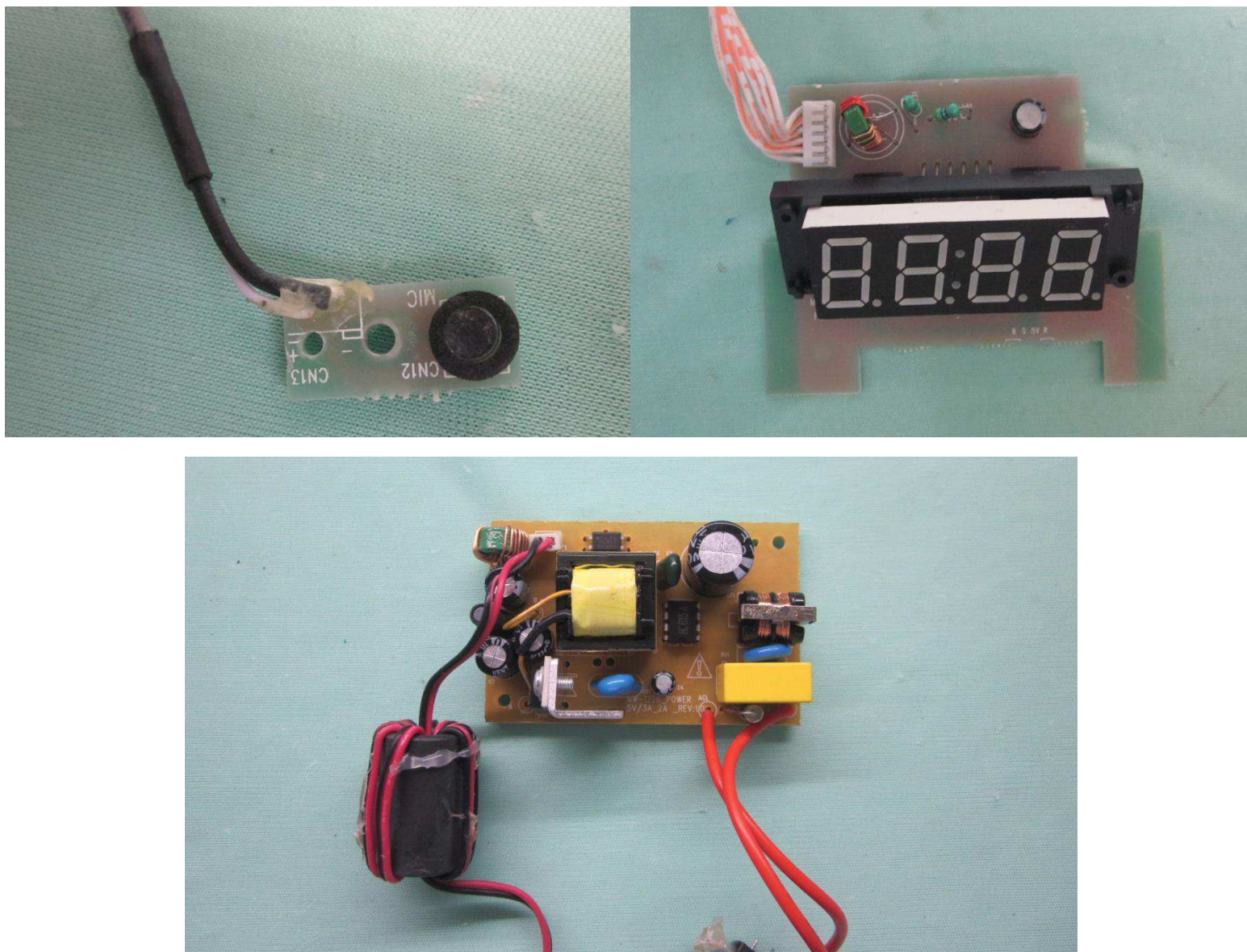


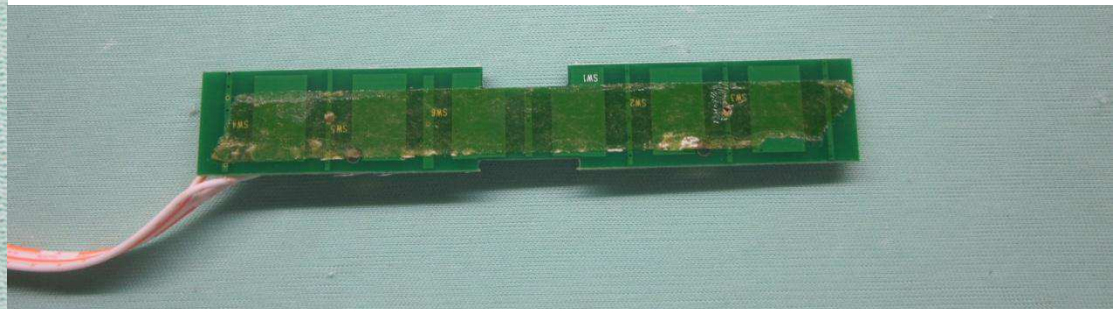
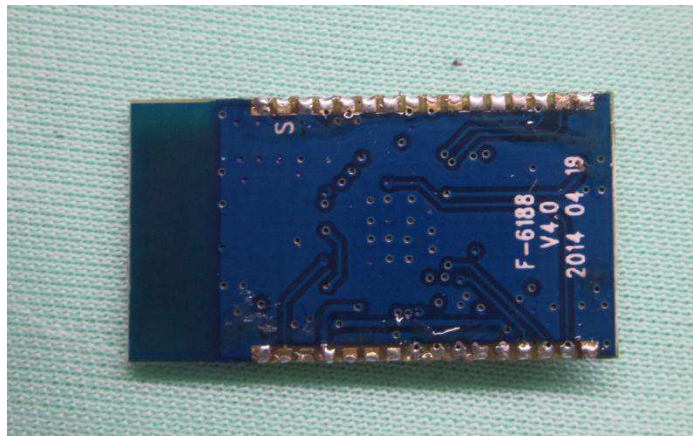
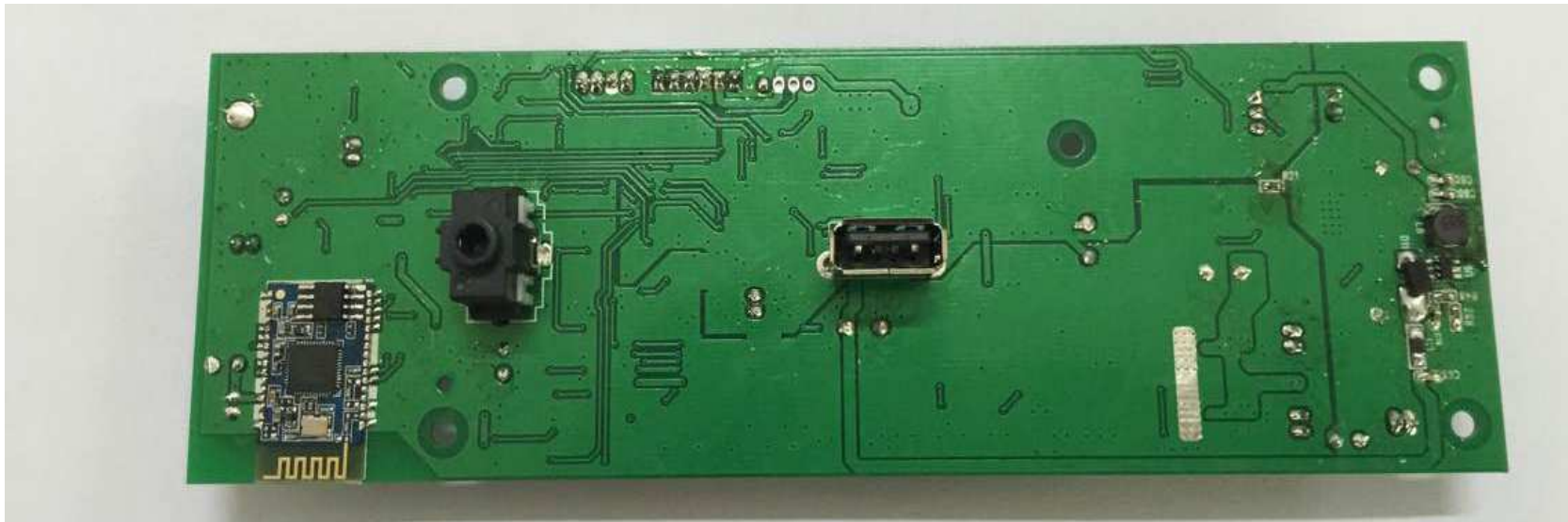
PHOTOGRAPH OF THE PRODUCT
INNER CIRCUIT TOP VIEW



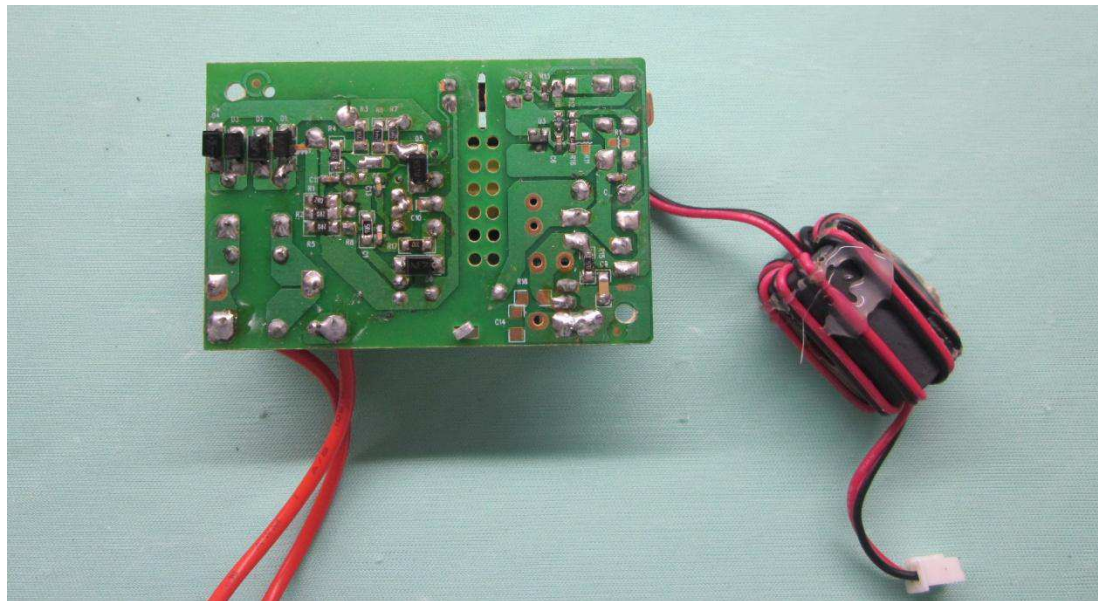
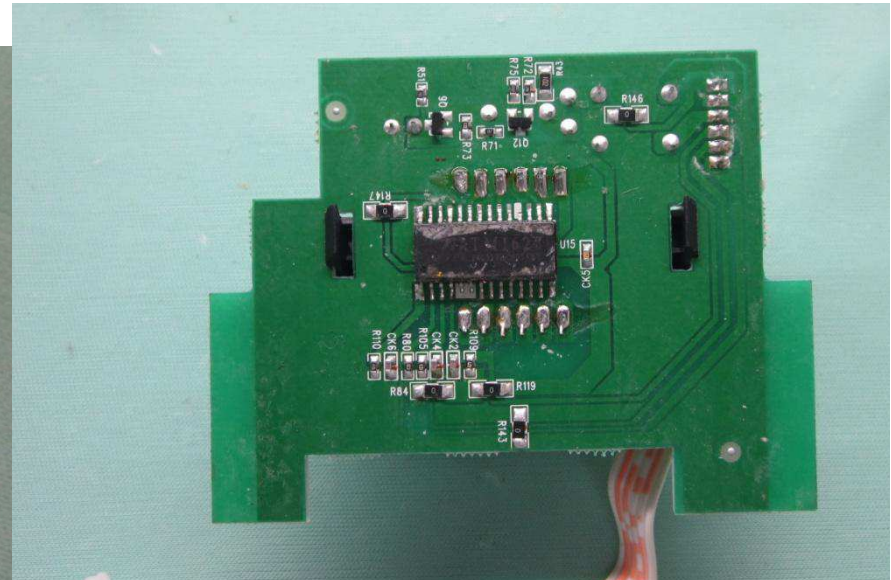
PHOTOGRAPH OF THE PRODUCT



PHOTOGRAPH OF THE PRODUCT
INNER CIRCUIT BOTTOM VIEW



A close-up photograph of a small, rectangular green printed circuit board (PCB) component. The component is mounted on a light green, textured surface. It features several circular solder pads and a central rectangular component, possibly a microchip or a small display, which is labeled 'C6'. A black cable with a white inner sheath is connected to the component, extending downwards and to the left.



PHOTOGRAPH OF THE PRODUCT

