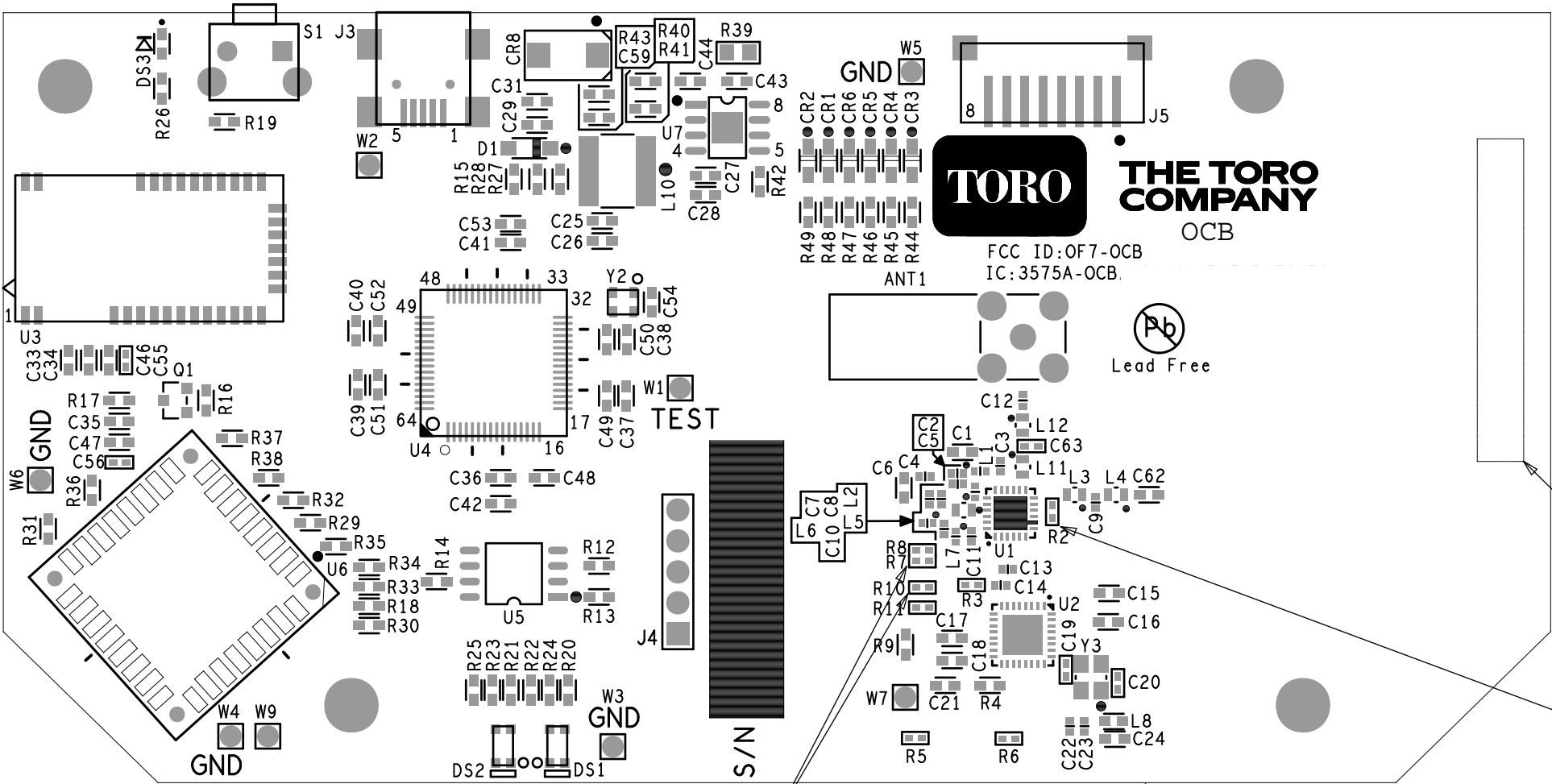



REVISION						
REV	E.O.NO.	DESCRIPTION		DRN	DATE	CHK APPD
C	5195405	RELEASED FOR PRODUCTION		WW	NOV-02-2023	TR TR

TOP VIEW



NOTES:

1. ★ DENOTES CRITICAL DESIGN PARAMETERS
2. ELECTRICAL COMPONENTS ARE IDENTIFIED BY REFERENCE DESIGNATIONS. FOR A LIST OF MATERIALS, REFERENCE THE SAP BOM FOR THIS ASSEMBLY AND REVISION, DATED ON OR AROUND 11-02-2023.
3. FOR SCHEMATIC DIAGRAM SEE SCH-5362 REV C.
4. LABEL TO BE FURNISHED BY SUPPLIER AND PLACED APPROXIMATELY WHERE SHOWN, PRINTED WITH PCB ASSEMBLY NUMBER, REVISION LETTER, DATE CODE AND SERIAL NUMBER WITH SUPPLIER ID. DO NOT PLACE PCBA LABEL OVER UL FLAME RATING MARKING.
5. ★ ALL ELECTRICAL AND MECHANICAL INTERFACE CONNECTION SURFACES ARE TO BE FREE OF CONTAMINATES (FLUX, SOLDER, ETC).
6. ★ ON THE SOLDER SIDE, THE COMPONENT LEADS TO BE LESS THAN .100in HEIGHT.
7. USE BLANK PCB 118-7000 REV C.
8. WORKMANSHIP TO IPC-A-610 CLASS 2.
9. ALL SOLDER SHALL BE SAC305 OR TORO APPROVED SUBSTITUTE. MAXIMUM REFLOW TEMPERATURE MEASURED ON PCB SHALL NOT EXCEED 265 DEGREES CELCIUS.
11. ALL MATERIALS AND PROCESSES MUST COMPLY WITH TORO COMPLIANCE STANDARD TCS-0001.
12. DO NOT INSTALL THE FOLLOWING R2, R7 AND R10.

MATERIAL		DRN	W. WALLER	11/02/2022		THE TORO COMPANY IRRIGATION DIVISION RIVERSIDE, CALIFORNIA	
		CHK	Tom Runge	11/02/2022			
		ENG	Tom Runge	11/02/2022			
FINISH		APP	Tom Runge	11/02/2022			
		UNLESS OTHERWISE SPECIFIED ALL DIMENSIONS ARE IN INCHES TOLERANCES ON					
WEIGHT	UNITS	.XXX	.XX	ANGLES	TITLE ASSY PCB, PCA-COM OCB		
0.010	LB	.005	.01	--			
		DO NOT SCALE DRAWING			SHEET 1 OF 2		