

Figure 5.11. FDTD derived E-field of AT&T RU antenna in y-z plane compared to ANSI/IEEE exposure standard (Scan N, 331 mm from ground plane of antenna, maximum E-field strength = 24.25 V/m).

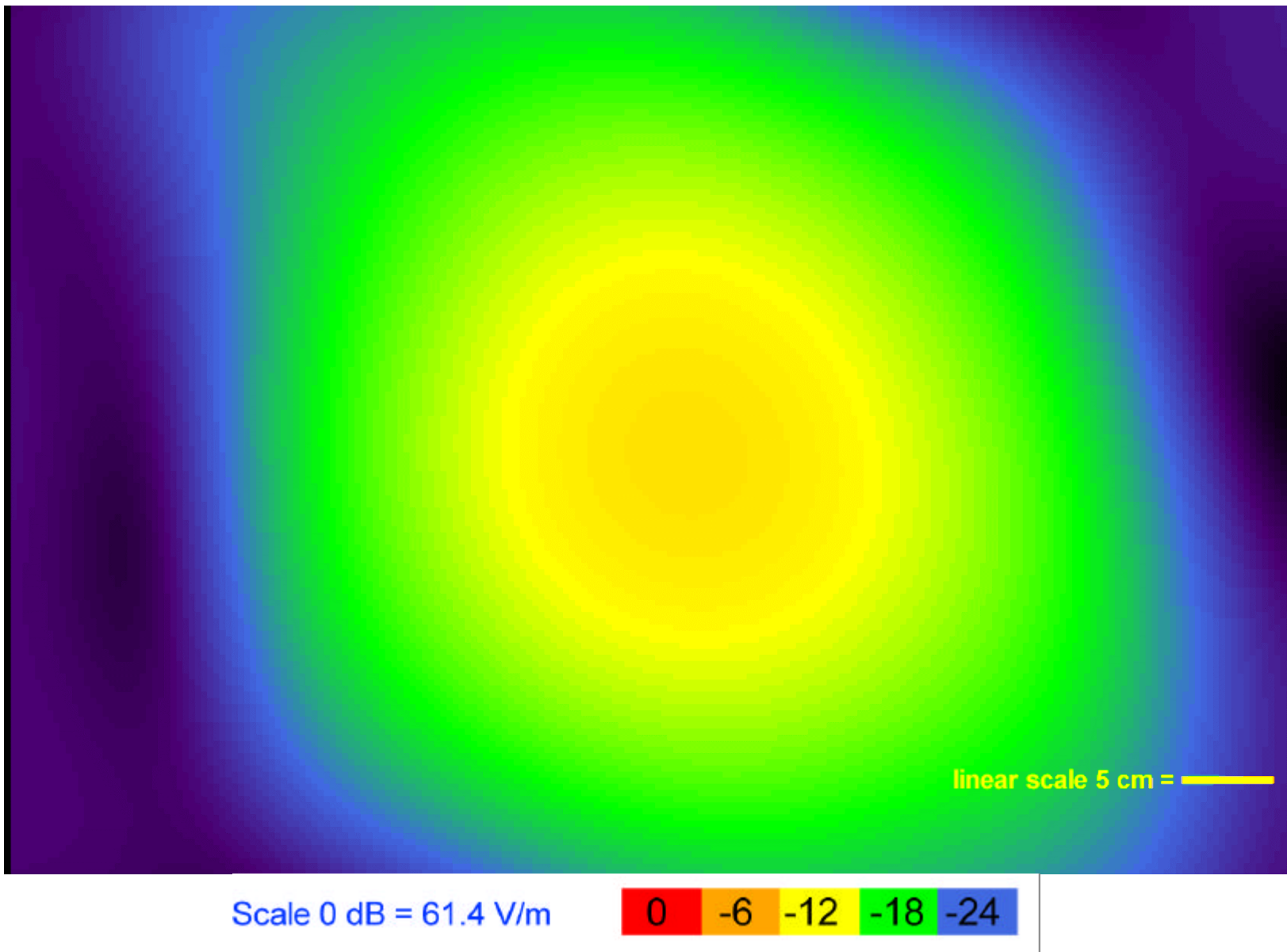


Figure 5.12. FDTD derived E-field of AT&T RU antenna in y-z plane compared to ANSI/IEEE exposure standard (Scan O, 451 mm from ground plane of antenna, maximum E-field strength = 19.03 V/m).

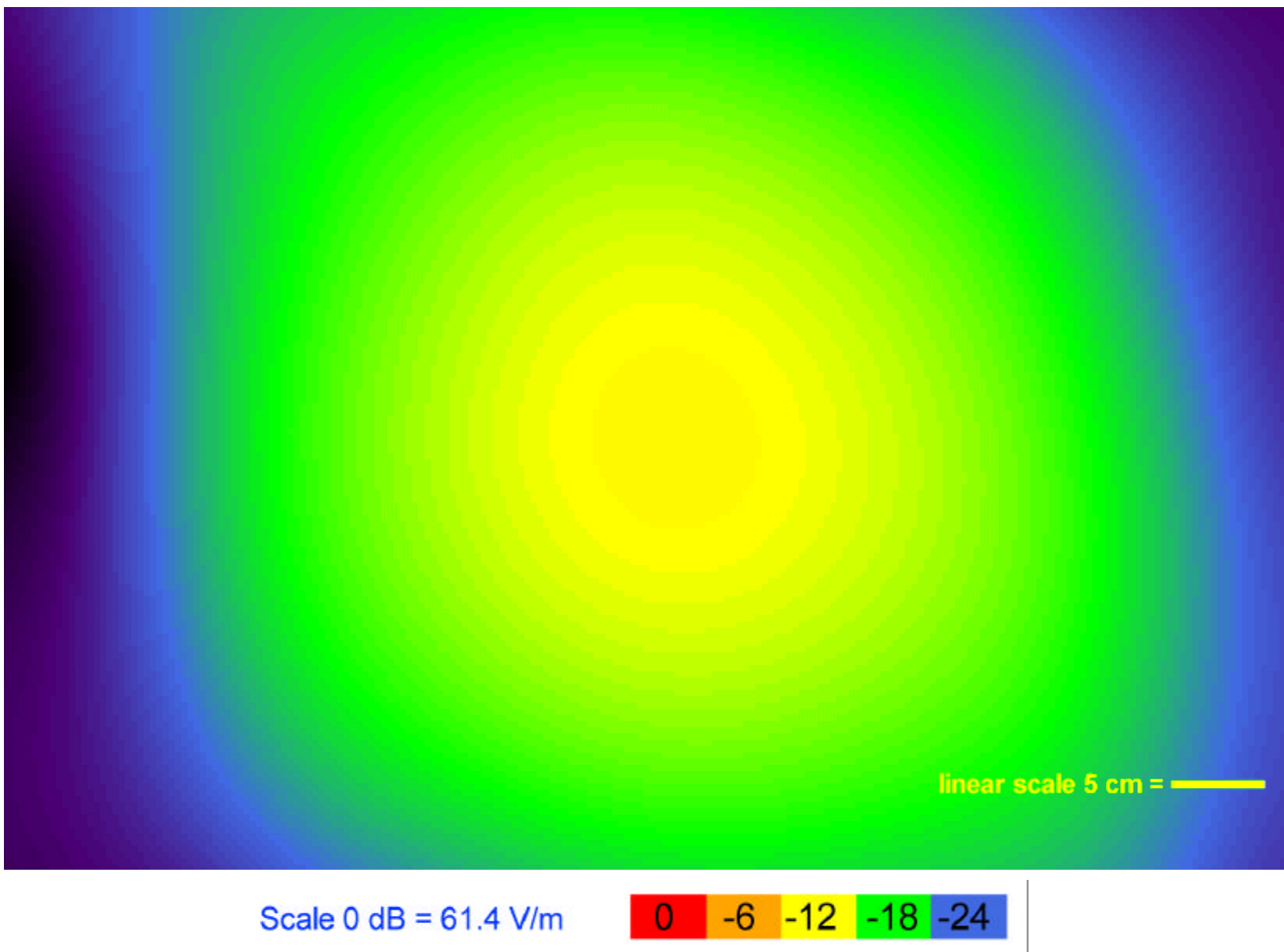


Figure 5.13. FDTD derived E-field of AT&T RU antenna in y-z plane compared to ANSI/IEEE exposure standard (Scan Q, 541 mm from ground plane of antenna, maximum E-field strength = 16.18 V/m).