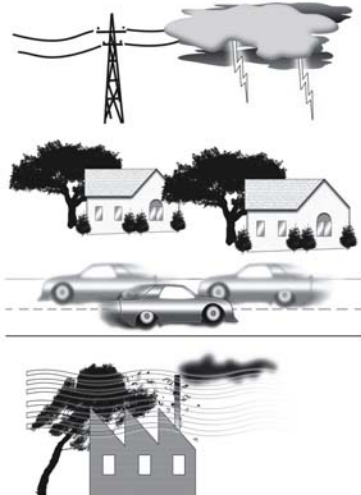


Flying Field

Choosing a safe and open flying field may be the deciding factor of whether or not you are successful at flying the C50.

Choose an area that is open and free from obstacles like buildings, trees, railroads, over head electrical wires, cars, and full size airplanes. Never fly over a crowd!

Never fly in these conditions!



Product Introduction

The new C50 Ready to fly mini airplane come with a 2.4GHz radio system for the ultimate in control.

The high wing design makes the C50 a great plane for beginners and offers the flight characteristics of a "trainer".

This easy to control plane offers stable flight with the ability to do loops and inverted flight.

Quality EPS construction means a light weight and durable fuselage.

A built in low voltage cut off allows you to land the plane when the battery is dead. The remaining voltage is directed to the control surfaces for a successful landing and throttle may be used in bursts.

Warning

The C50 radio controlled mini airplane is not a toy and must be used with caution. This airplane is for people 14 years of age and older. It is the responsibility of the pilot to ensure the airplane is being used in accordance with these instructions to avoid injury.

If you are unfamiliar with RC airplanes, we recommend you seek the guidance of an experienced RC pilot.

The propeller at the front of the plane spins very fast and can cause damage to the face, fingers, and anything it comes in contact with. Be sure to keep all body parts away from the spinning propeller especially id hand launching the C50.

Manufacturers and distributors of this product will not be liable for any damage of injury caused by negligent use.

When the plane is not in use, unplug the battery and then turn off the transmitter.

Battery instruction

The C50 uses a LiPo battery pack for great performance and the charging instructions in the following pages must be followed exactly to avoid injury or damage. While LiPo batteries offer greater performance than other batteries, they are also more likely to explode or catch fire if not used correctly.

Only use the included LiPo specific charger to charge the LiPo battery. Always disconnect the battery from the charger when battery is charged. Never store the LiPo battery in hot places like in direct sunlight or in a hot car. Never throw the battery into a fire.

Never store the LiPo on or directly around other metal. Risk of short may occur.

Never disassemble or modify the battery in any way.

Only touch the battery, charger, and balancer with clean dry hands.

Never fly in a strong electrostatic field or a strong magnetic field.

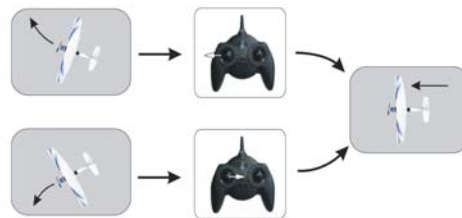
When you notice the battery is low or see the red indicator light, unplug the battery and let cool before recharging.



Please read and obey all the instructions in this user manual. This is for your safety and others. It is important you understand the possible dangers of misusing LiPo batteries.

Manufacturers and distributors of this product will not be liable for any damage of injury caused by negligent use.

If the plane turns left or right during flight, counteract the turn by moving the rudder stick in the opposite direction as shown below.



Mode 2 Operation

Throttle



(Accelerate)

Elevator



(Climb)

Rudder



(Turn Right)



(Decelerate)

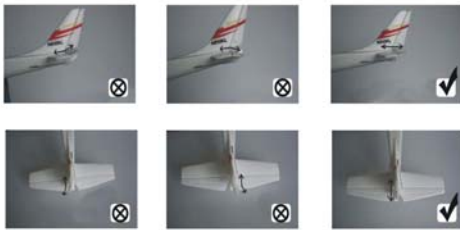


(Dive)



(Turn Left)

If level or straight line flight is unobtainable through the transmitter adjustments, you may need to adjust the control linkages. Look at the control surfaces to see they are inline with the wing they are attached to. If an adjustment is need, unhook the plastic clevis (screwed onto the control rod) from the plastic control horn. Screw the clevis in or out enough to achieve an inline control surface. See the elevator and rudder examples below.



Be sure all control surfaces are inline and the throttle is in the lowest position. While holding the controller in one hand, throw the plane into the wind with the other hand. Be sure to throw the plane in a level flight trajectory.



If after completely reading this manual you are still unsure how to charge the battery, please call the distributor of this product.

Warning

Keep children and pets away from the battery and charger at all times. An adult must be present while any part of this product is in use.

This product is guaranteed only for material quality and proper assembly. In the case either of these is faulty, the product will be replaced and under no circumstance will a refund be given for more than retail price.

LiPo battery safety instructions.

1. The battery and charger may become warm during charging, this is normal. Always ensure good air flow over both the charger and battery.
2. Never leave the battery unattended during charging!
3. Only use a LiPo specific charger. Never use a NiCD or NiMH charger to charge a LiPo.
4. If the battery gets hot, swells, or does anything else abnormal, stop charging and get the battery to a safe place to prevent fire or explosion.
5. Never leave the battery to charge over night. This can cause the battery to over charge and possibly cause fire or explosion.
6. Never disassemble the battery.

If the battery is damaged from impact or anything else:

1. Remove the battery from the plane and put in in a safe place.
2. Visually check the battery for damage.
3. If the battery appears to be damaged, consult the dealer for more instruction.

Included Items

Item Name	Quantity
Fuselage	1
Main Wing	1
2.4GHz Radio Transmitter	1
LiPo Battery (2s, 180Mah)	1
Charge Adapter (plug)	1
Charge Balancer	1
Main Landing Gear	1
Front Landing Gear	1
Propeller	2
Propeller Spinner	1
Propeller screw	2
Main Wing Screw	2
Screw Driver	1
User Manual	1



- 4 -

Connect the LiPo battery to the plane. Insert the battery into the battery compartment and secure the cover as shown. (pic. 17 - 19).



(pic. 17)



(pic. 18)



(pic. 19)

If the propeller spins automatically, Push the bottom "throttle trim" button until it stops. See pictures below.



Use the "elevator trim" buttons to level the planes flight course while flying.



*note- The plane will tend to climb more while flying into the wind.

- 9 -

Transmitter functions

Assembly

MODE 1

Right Throttle



MODE 2

Left Throttle



1. Install the main wing to the fuselage and secure with the screws provided. Shown below (pic. 1-2)



(pic. 1)



(pic. 2)

2. Install the main landing gear as shown. (pic. 3-4)



(pic. 3)



(pic. 4)

3. Install the front landing gear as shown. (pic. 5-7)



(pic. 5)

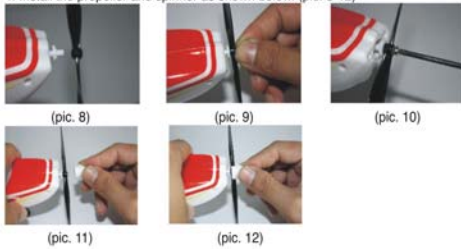


(pic. 6)



(pic. 7)

4. Install the propeller and spinner as shown below. (pic. 8-12)



Important

1. Install four "AA" batteries into the transmitter while throttle is in the "off" position. (pic. 13-15)



2. Turn on the transmitter and make sure all control surfaces are working properly. The transmitter's power indicator will turn green. The indicator will turn red when the "AA" batteries need replacing. (pic. 16)



Battery: Charging, Installation, and Maintenance

Charging your LiPo Battery

Only use the included LiPo battery as it is designed for this airplane's power system.

Before charging it is a good idea to read the label on the battery itself.

Plug the balancer into the charge adapter and plug the adapter into a 110 house hold power supply. (pic.1)

You may also plug the balance charger into an automotive adapter for use in vehicles. Never charge the battery while car is running.

Plug the battery into the balance charger. (pic. 3)

Both red and green indicator lights will be on while battery is charging. When just the green light is on, the battery is done charging. Remove the battery from the charger.

Never leave the battery unattended while charging.

The battery will become warm during charging. If the battery becomes hot, remove it from the charger and put it in a safe place.

Never put the battery near a fire or in a hot environment.

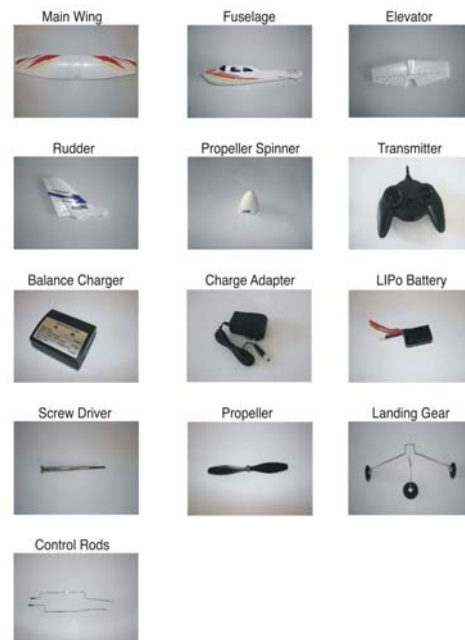
Always remove the battery from the charger when it is done charging.



Table of Contents

Pg.1	Product contents
Pg.1	Warning
Pg. 2	Battery (safe use and instruction)
Pg. 3	Safety precautions
Pg. 4	Components
Pg. 5	Charging your battery
Pg. 6	2.4GHz radio
Pg. 7	Assembly
Pg. 8	Flight precautions
Pg. 9-11	Checking the control surfaces
Pg. 11	Radio Modes
Pg. 12	Flying Fields
Pg. 13	Flight training
Pg. 13	Safety precautions
Pg. 14	Accessories

Parts & Accessories



Things to Remember

1. Turn on transmitter before plugging the battery into the plane.
2. Turn off transmitter after unplugging the battery from the plane.
3. Always check the direction of the wind. Launch and land **into** the wind.
4. Slightly apply throttle while launching the plane at a level trajectory.
5. Adjust elevator and rudder trims once in the air for straight and level flight.
6. Flying too fast or too close to the ground may result in more crashes than a slow flight at moderate altitude.
7. Be gently with the controls. Smooth and steady is the key to successful flights.
8. Beginners should switch the D/R (Dual Rate) switch to low while getting used to the airplane.
9. If taking off from the ground, choose a smooth paved area and remember to take off into the wind.
10. Never fly on a **WINDY** day. Slight breezes are challenging enough.
11. Land the plane when the battery gets low.
12. Remove the battery from the plane when not in use.
13. If mid air impact is eminent, cut off the throttle to lessen the chances of damage. Be sure to check all parts including the battery after a crash.
14. If the plane will be stored for a long time, charge the LiPo battery to about 50% charge. The battery will lose some charge while sitting and must not fully discharge or damage will occur. Also remove the batteries from the transmitter to prevent acid corrosion.

Warning

Any Changes or modifications not expressly approved by the party responsible for compliance could void the user's authority to operate the equipment.

This device complies with part 15 of the FCC Rules.

Operation is subject to the following two conditions:

- (1) This device may not cause harmful interference, and
- (2) this device must accept any interference received, including interference that may cause undesired operation.

Note: This equipment has been tested and found to comply with the limits for a Class B digital device, pursuant to part 15 of the FCC Rules. These limits are designed to provide reasonable protection against harmful interference in a residential installation. This equipment generates, uses and can radiate radio frequency energy and, if not installed and used in accordance with the instructions, may cause harmful interference to radio communications. However, there is no guarantee that interference will not occur in a particular installation. If this equipment does cause harmful interference to radio or television reception, which can be determined by turning the equipment off and on, the user is encouraged to try to correct the interference by one or more of the following measures:

- Reorient or relocate the receiving antenna.
- Increase the separation between the equipment and receiver.
- Connect the equipment into an outlet on a circuit different from that to which the receiver is connected.
- Consult the dealer or an experienced radio/TV technician for help.