

**NMI Brasil**  
an IFM and NMI joint venture

**Confidential NMI / Microtec**  
FCC Id                      **MYTHUS5000D9**  
Grantee Code

**Microtec Personal Computer Mythus 5233**  
**Electromagnetic Compatibility FCC Test Report**

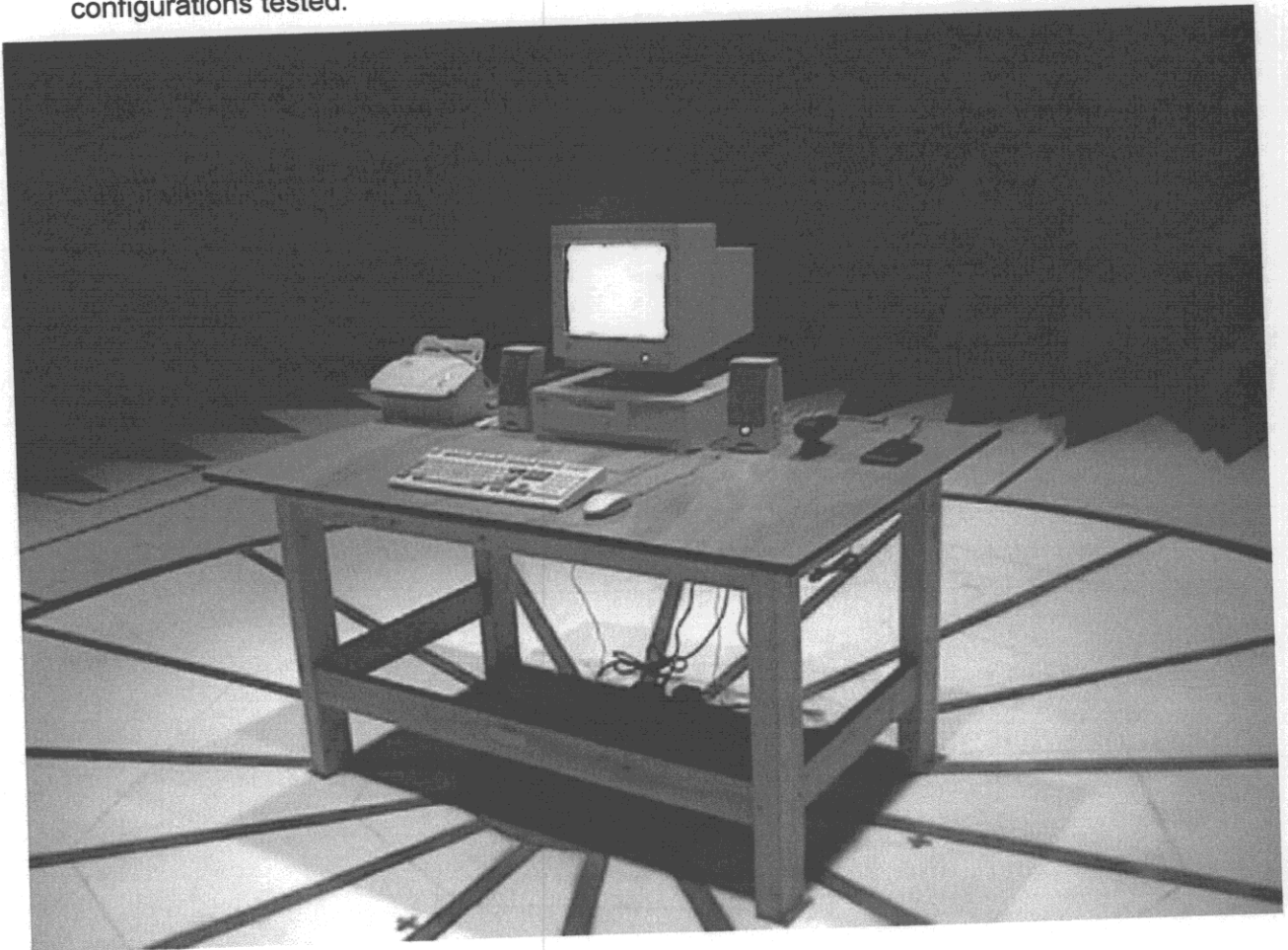
also performed for the same frequency by using the spectrum analyzer filters and time constants. Unless otherwise noted in the test results, the quasi-peak measurement is carried out maximizing the reading of all phases (Phase and Neutral for single phase connections, Phase 1 and Phase 2 for two phases, etc.). This procedure is repeated until the technician assures the maximum conducted emission is read for the specific spot frequency.

The entire quasi-peak and average measurement procedure is then repeated for the next spot frequency until all frequencies have been measured.

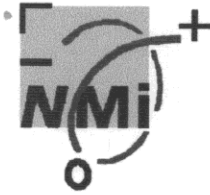
#### **4.4. Radiated and Conducted Tests Results**

##### **4.4.1. Radiated Emissions**

The EUT described in 3.1 was installed into the Semi-Anechoic chamber according to 3. Photo 12, Photo 13, Photo 14, Photo 15 and Photo 16 are added to help identify the configurations tested.



*Photo 12 - Panoramic with setup of EUT setup at the NMI semi-anechoic chamber*



**NMi Brasil**  
an IFM and NMI joint venture

**Confidential NMI / Microtec**  
FCC Id \_\_\_\_\_ **MYTHUS5000D9**  
Grantee Code

**Microtec Personal Computer Mythus 5233**  
**Electromagnetic Compatibility FCC Test Report**

### 4.4.2. Conducted Emissions Test Results

The EUT described in 3.1 was installed into the Conducted EMI Test Room according to 3. Photo 17 is added to help identify the configuration tested.

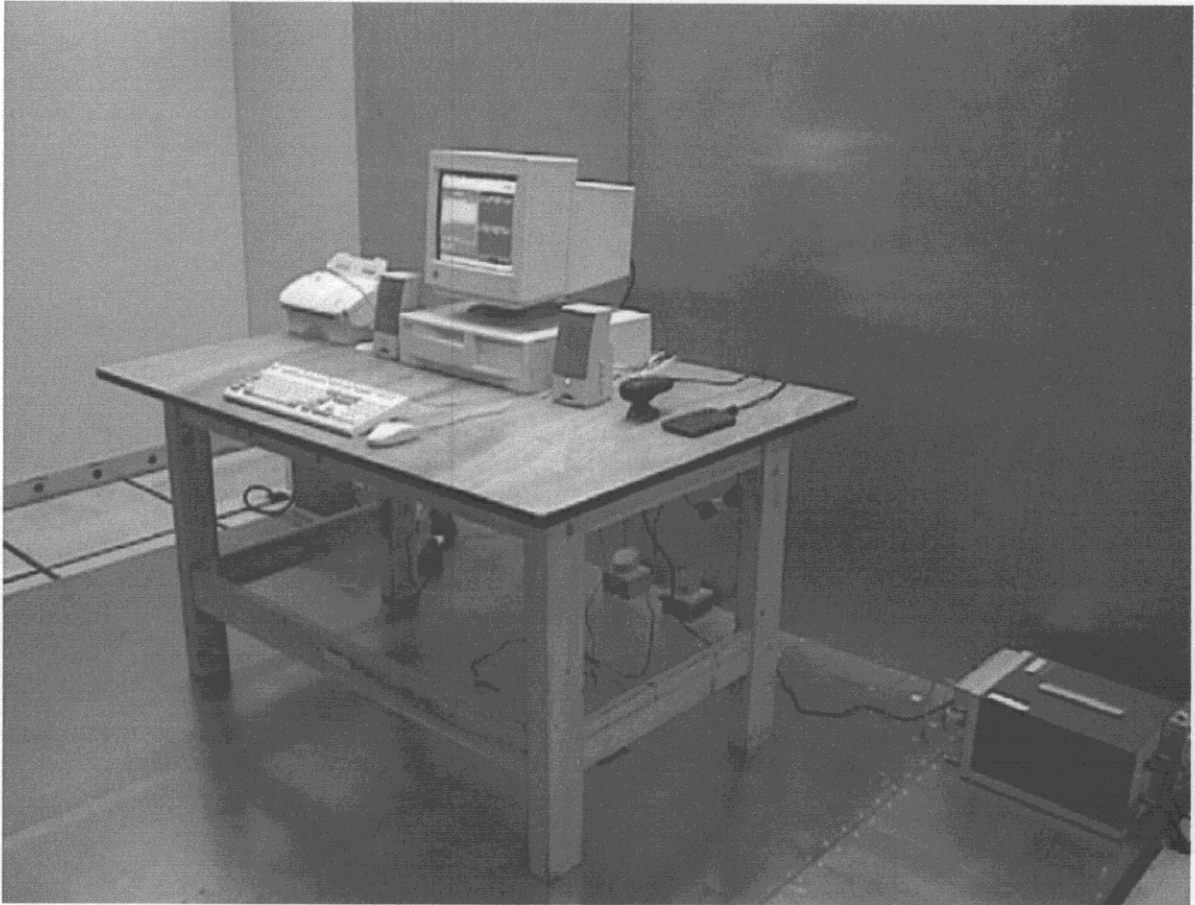
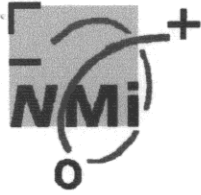


Photo 17 - Photo of the EUT stand alone in the Conducted EMI Test Room

AC Voltage	Freq. (MHz)	$E_{QP \text{ meas.}}$ (dB $\mu$ V)	$QP_{\text{limit}}$ (Db $\mu$ V)	$E_{Av \text{ meas.}}$ (dB $\mu$ V)	$AV_{\text{limit}}$ (dB $\mu$ V)	Margin (dB)	Graphic	P/F
127V/60Hz	n/c	n/c	n/c	n/c	n/c	n/c	Graphic 7	Pass
220V/60Hz	n/c	n/c	n/c	n/c	n/c	n/c	Graphic 8	Pass
Legend		Description						
$E_{QP \text{ measured}}$		Maximum Quasi-Peak voltage measured.						
$QP_{\text{limit}}$		Quasi-Peak limit.						
$E_{Av \text{ measured}}$		Maximum Average voltage measured.						
$AV_{\text{limit}}$		Average limit.						

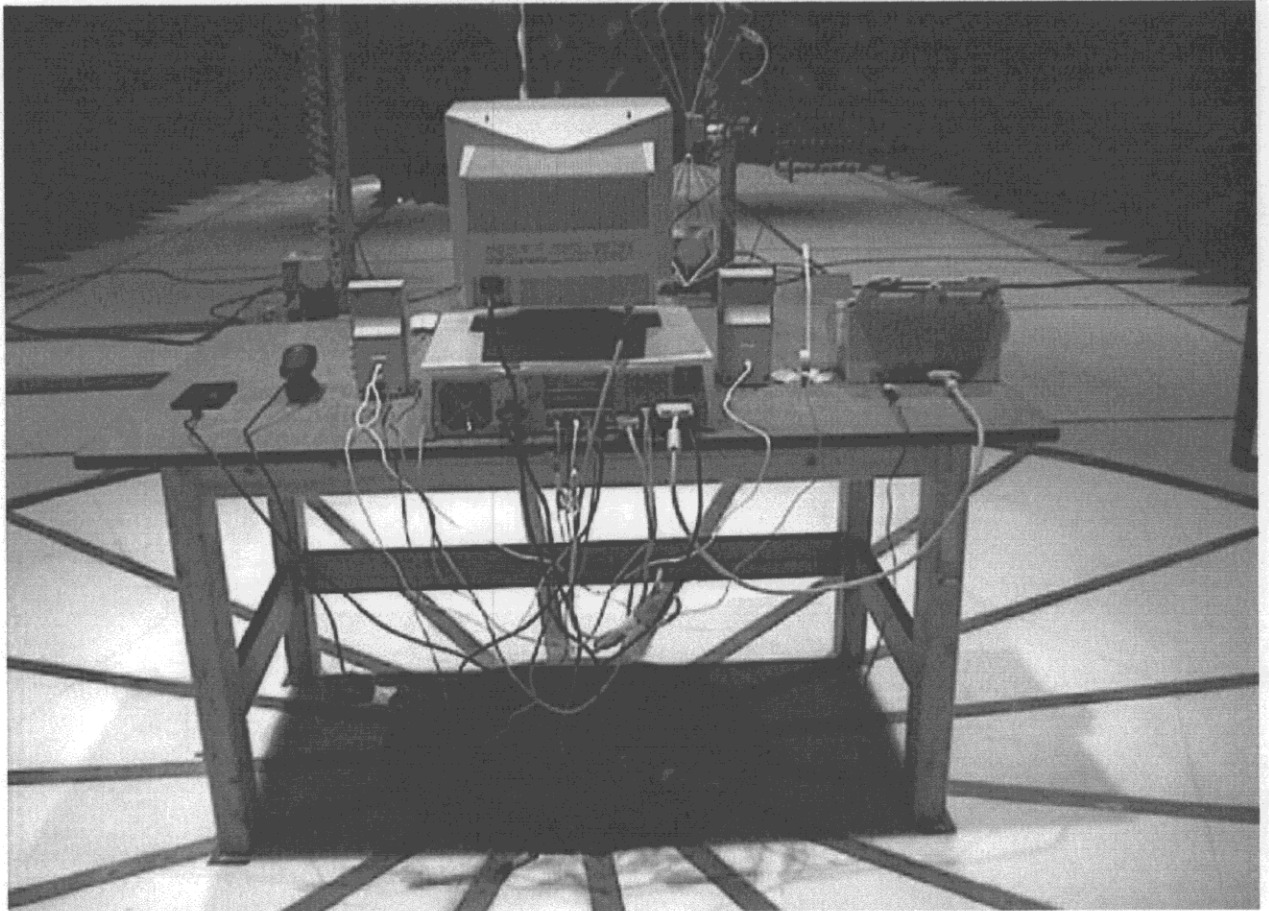
Table 15 - Conducted Emissions test according to FCC CFR47, pt15 Class B - Maximum Measured Values.



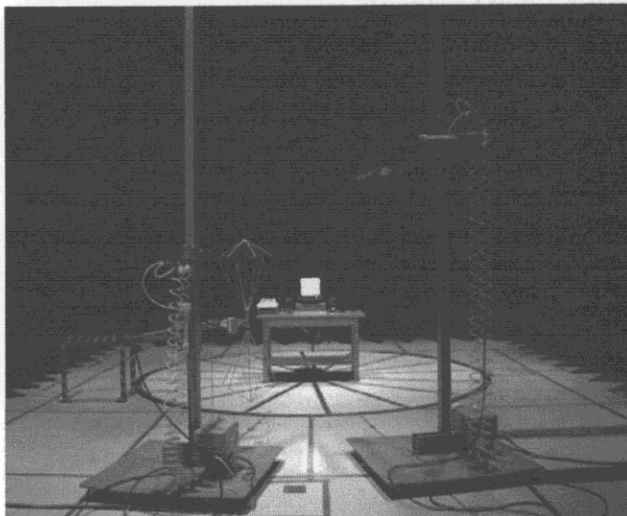
**NMi Brasil**  
an IFM and NMI joint venture

**Confidential NMI / Microtec**  
FCC Id                **MYTHUS5000D9**  
Grantee Code

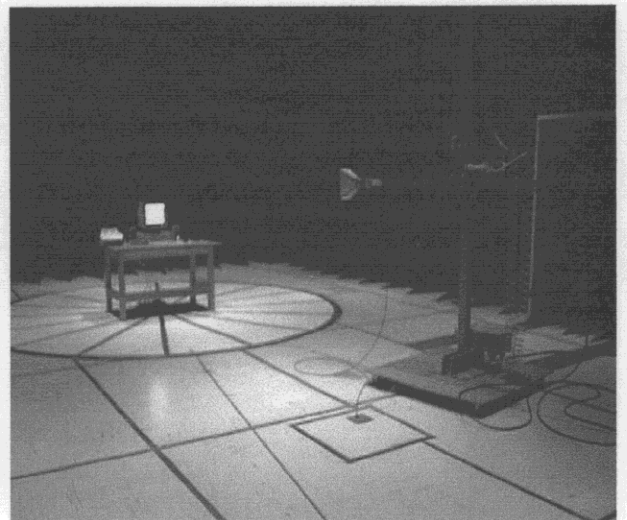
**Microtec Personal Computer Mythus 5233**  
**Electromagnetic Compatibility FCC Test Report**



*Photo 13 - Rear Side of EUT setup at the NMI semi-anechoic chamber*



*Photo 14 - Biconical & Log Periodic Antenna*



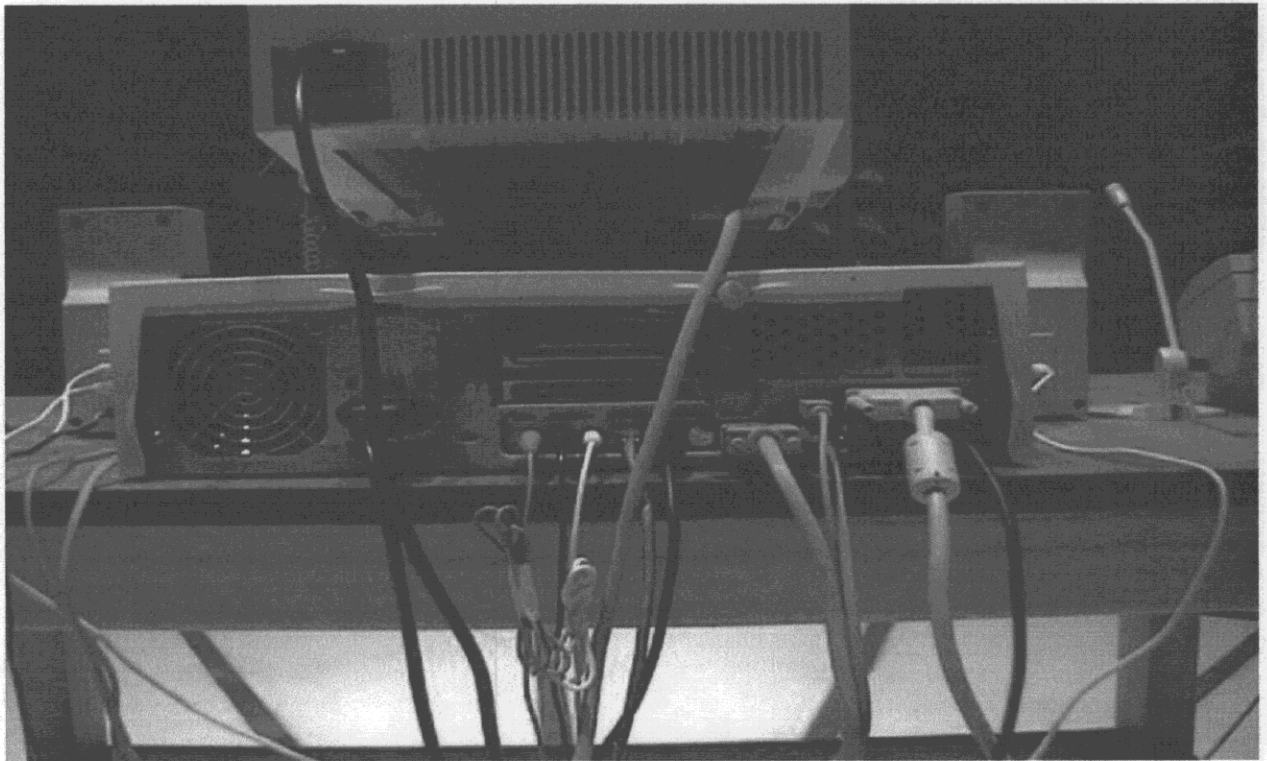
*Photo 15 - Horn Antenna*



**NMi Brasil**  
an IFM and NMI joint venture

**Confidential NMI / Microtec**  
FCC Id                      **MYTHUS5000D9**  
Grantee Code

**Microtec Personal Computer Mythus 5233**  
**Electromagnetic Compatibility FCC Test Report**



*Photo 16 - Detailed view of the rear of EUT showing all connections*