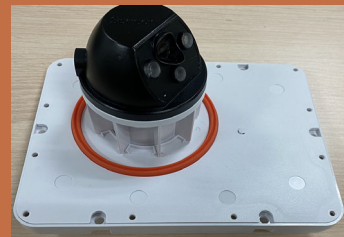


Wireless BLE camera



Zazu

HIGHLIGHTS

ZAZU is a lower power consumption BLE camera device, which can operate with internal rechargeable battery. Zazu also can get power from solar panel. ZAZU can be installed anywhere and anytime for keeping your valuables safe.

IT'S RELIABLE

The ZAZU is a high-performance, IP45 rated device. It includes an integrated BLE5.0 and a 200Mpix camera, it can communicate with BLE5.0 device.

IT'S SIMPLE

With rechargeable batteries the ZAZU is easy to install on cars, trucks, trailers. ZAZU can be wake-up by the message come from BLE 5.0 host device.

IT'S FUNCTIONAL

The ZAZU is a simple BLE camera, when the BLE host device gets any event need to capture the picture, it can trigger the BLE camera via BLE and then the BLE camera will wake-up and capture pictures send to BLE host immediately.

- BLE 5.0 for lower power consumption
- 2 LEDs status indicators for work status and BLE status.
- Camera for image capturing
- Infrared LEDs for the camera working in dark environment
- IP67 sealed,



Specifications

BLUETOOTH

- BLE 5.0 lower power consumption

BATTERY INFORMATION

- Battery Type: 4 * 18650 Li-ION 2p2s
- Chargeable battery 4200mAh@7.4V

ENVIRONMENTAL

- Operation Temperature: -30°C to +60°C
- Storage Temperature: -40°C to +80°C
- Operation Humidity: 20% to 90% (non-condensing)
- Storage Humidity: 10% to 95% RH (non-condensing)

ELECTRICAL

- Operating Voltage: 12VDC
- On-battery
 - Sleep/Hibernate: <100uA
 - Tracking 45mA Typical

Camera

- Camera: 2MPixels

APPROVALS

- FCC
- PTCRB & Carrier Approved

Positioning Universal Inc

FCC Regulations:

This device complies with part 15 of the FCC Rules. Operation is subject to the following two conditions: (1) This device may not cause harmful interference, and (2) this device must accept any interference received, including interference that may cause undesired operation.

This equipment has been tested and found to comply with the limits for a Class B digital device, pursuant to part 15 of the FCC Rules. These limits are designed to provide reasonable protection against harmful interference in a residential installation. This equipment generates, uses and can radiate radio frequency energy and, if not installed and used in accordance with the instructions, may cause harmful interference to radio communications. However, there is no guarantee that interference will not occur in a particular installation. If this equipment does cause harmful interference to radio or television reception, which can be determined by turning the equipment off and on, the user is encouraged to try to correct the interference by one or more of the following measures:

- Reorient or relocate the receiving antenna.
- Increase the separation between the equipment and receiver.
- Connect the equipment into an outlet on a circuit different from that to which the receiver is connected.
- Consult the dealer or an experienced radio/ TV technician for help.

Changes or modifications not expressly approved by the manufacturer could void the user's authority to operate the equipment.

Positioning Universal Inc

FCC RF Radiation Exposure Statement

This equipment complies with FCC radiation exposure limits set forth for an uncontrolled environment. To comply with FCC RF Exposure compliance requirements, this grant is applicable to only Mobile Configurations. The antennas used for the transmitter must be installed to provide a separation distance of at least 20cm from all persons and must not be co-located or operating in conjunction with any other antenna or transmitter.