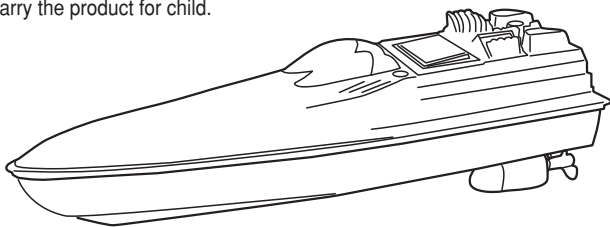
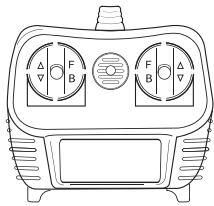


Please retain this instruction Manual for future reference.

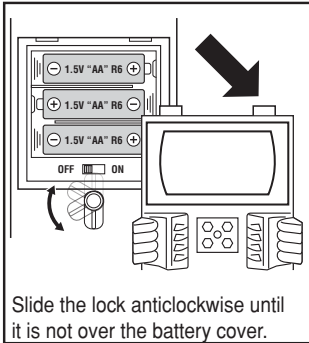
To protect components from damage, they may be packed in the packaging box out of plain sight. Please search packaging box and remove all of the components listed below.  
Adult supervision required. Adult should carry the product for child.



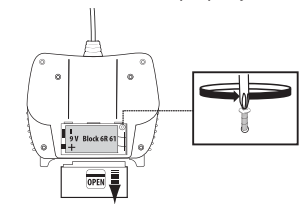
**WAVE RACER**

Speed : 1.8 km/h  
Distance : within 30 - 40M  
Size of product : 33 x 8.5 x 10.5cm

Battery Installation

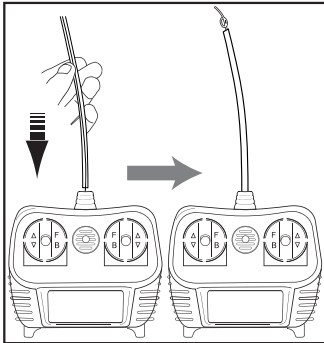


Return battery compartment cover to the closed and locked position after batteries have been properly installed.



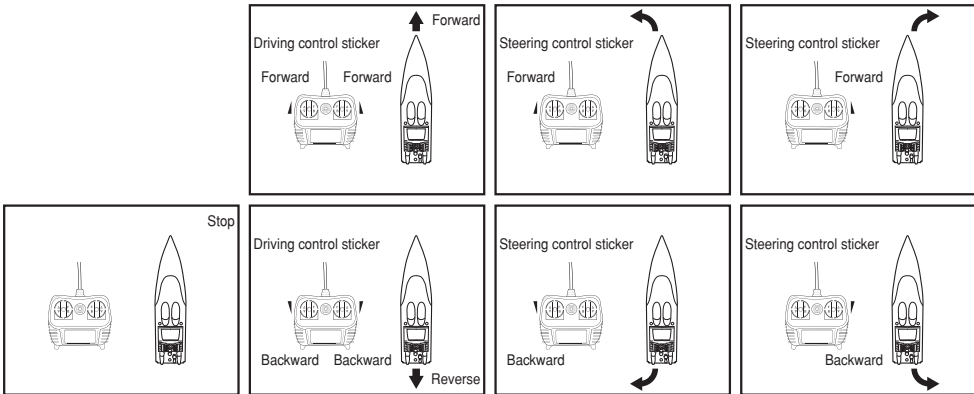
Cross head screwdriver is required to replace batteries (not included).

Antenna Placement



Features and Functions

**WARNING:** Since the wave may enlarge the distance between the watercraft and child, please do not exceed suggested distance. The wires are not to be inserted into socket-outlets. The toy is to be operated in water only when fully assembled in accordance with the instructions. (Around 30~40m, the distance will be effected by the obstacle around the WAVE RACER. Also, if other user plays another radio control items with 27 MHz, the reception distance will be effected too.)



Watercraft

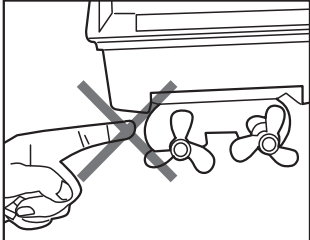
Operation and Care:

Radio waves control and drive the watercraft. Any of the following conditions may interfere with the behavior and function. The Transmitter signals can easily be interrupted. Caring for your Transmitter and watercraft is illustrated on this page.

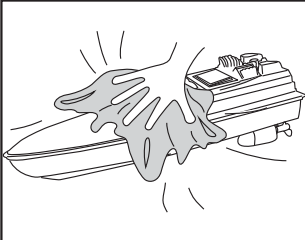
**THIS BOAT IS ENGINEERED TO RUN ON WATER SURFACES. FULLY SUBMERGING BOAT BENEATH WATER WILL DAMAGE INTERNAL ELECTRONICS AND MECHANICAL PARTS.**

*The toy is to be operated in water only when fully assembled in accordance with the instructions.*

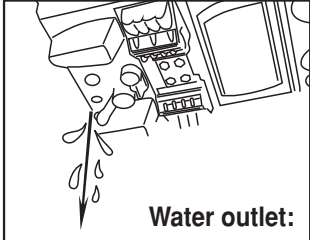
- Do not operate on salt water.
- Do not operate watercraft where there are water plants, rubbish or other obstacles. This could damage or impair propeller.
- Do not play where there is strong water current or when there is strong wind blowing on the water.
- Do not play outdoors during thunderstorms.
- When lifting watercraft, be sure to hold the body securely.
- Be sure to bring the watercraft out of water before the battery power runs out.
- Do not operate watercraft in water without top of watercraft attached. Battery Compartment must be covered when in use.
- Wipe clean with towel after playing.
- Please do not crash other obstacles including other watercraft to prevent malfunction of this product.



**CAUTION:** The rotating propeller is very dangerous. Never put your fingers close to the propeller when the watercraft is turned 'ON'.



This Radio Control watercraft needs periodic fresh water cleaning and maintenance.



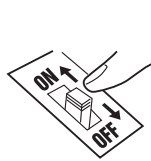
Anywater that has penetrated into the body of the boat must be emptied out after use. Release this by opening the water outlet. **Warning! Before use it must be shut again.**

Battery operated toys information

- Unscrew battery door's screw with screw-driver to remove or insert batteries.
- Place the batteries into the battery box as the drawing position or as the battery box label direction.
- Non-rechargeable batteries are not to be recharged.
- Rechargeable batteries are to be removed from the toy before being charged.
- Rechargeable batteries are only to be charged under adult supervision.
- Different types of batteries or new and used batteries are not to be mixed.
- Batteries are to be inserted with correct polarity.
- Exhausted batteries are to be removed from the toy.
- The supply terminals are not to be short-circuited.
- When storing the toy for long periods of time. Remove the batteries.
- Switch the toy off before inserting the batteries.
- Batteries are harmful if swallowed, so keep away from young children.
- Do not dispose of batteries in fire, batteries may explode or leak.
- Never attempt to open up its outer casing of toy.
- Batteries are only to be charged by adults or by children at least 6 years old.

Proper Use

Additional Care



Always switch vehicle 'OFF' when not in use.



Brush areas where dirt and dust get trapped.



Wipe body off with a soft rag or cloth.



Do not clean vehicle with chemicals.

Support

Trouble Shooting

*90% of all difficulties experienced with radio controlled watercrafts are due to either weak batteries or batteries that have been installed incorrectly. When batteries become weak, the watercraft may not necessarily stop completely. However, watercraft may exhibit slow response, slow speed or erratic behavior.*

**Problem-Watercraft does not move, moves slowly or moves sporadically.**

- Make certain there are fresh alkaline batteries in the Transmitter and that they have been installed in the correct position.
- Are the plus (+) and minus (-) markings on the alkaline batteries in the same position as the plus (+) and minus (-) markings in the Battery Compartment?
- Has the battery pack been installed in the watercraft?
- Are the (+) and (-) markings on the battery pack in the same position as the (+) and (-) markings in the Battery Compartment?
- Are the metal contact tabs touching, rusty or dirty in the Transmitter?
- Make certain that the watercraft ON/OFF switch is in the " ON " position.

**Problem-Watercraft exhibits reduced range from the transmitter.**

- Make certain there is no outside radio interference in your area, The best way to test this is to take the watercraft as far away from radio towers, electrical lines or tall buildings as possible. If the watercraft operates correctly in the new area, radio interference was the problem.

**FCC CAUTION:**

The manufacturer is not responsible for radio interference caused by unauthorized frequency modification to the equipment. Such modification could void the user's authority to operate the equipment. This device complies with Part 15 of the FCC Rules. Operation is subject to the following two conditions: (1) this device may not cause harmful interference, and (2) this device must accept any interference received, including interference that may cause undesired operation. Changes or modifications not expressly approved by the party responsible for compliance could void the user's authority to operate the equipment. This equipment has been tested and found to comply with the limits for a Class B digital device, pursuant to Part 15 of the FCC Rules. These limits are designed to provide reasonable protection against harmful interference in a residential installation. This equipment generates, uses and can radiate radio frequency energy and, if not installed and used in accordance with the instructions, may cause harmful interference to radio communications. However, there is no guarantee that interference will not occur in a particular installation. If this equipment does cause harmful interference to radio or television reception, which can be determined by turning the equipment off and on, the user is encouraged to try to correct the interference by one or more of the following measures:

- Reorient or relocate the receiving antenna.
- Increase the separation between the equipment and receiver.
- Connect the equipment into an outlet on a circuit different from that to which the receiver is connected.
- Consult the dealer or an experienced radio/TV technician for help.

**PLAYING TIPS:**

1. Please do not drive the Watercraft exceed the suggested distance and when the Watercraft is out of battery.
2. Since the Watercraft cannot move backward, please remain a certain distance for it to turn the direction to backwards.
3. Please switch the band to correct one in order to control the Watercraft.

Manufactured by:  
CHEUNG FAT FACTORY  
No. 1, Yalai Street, Huiyang District,  
Huizhou City, Guangdong, China

