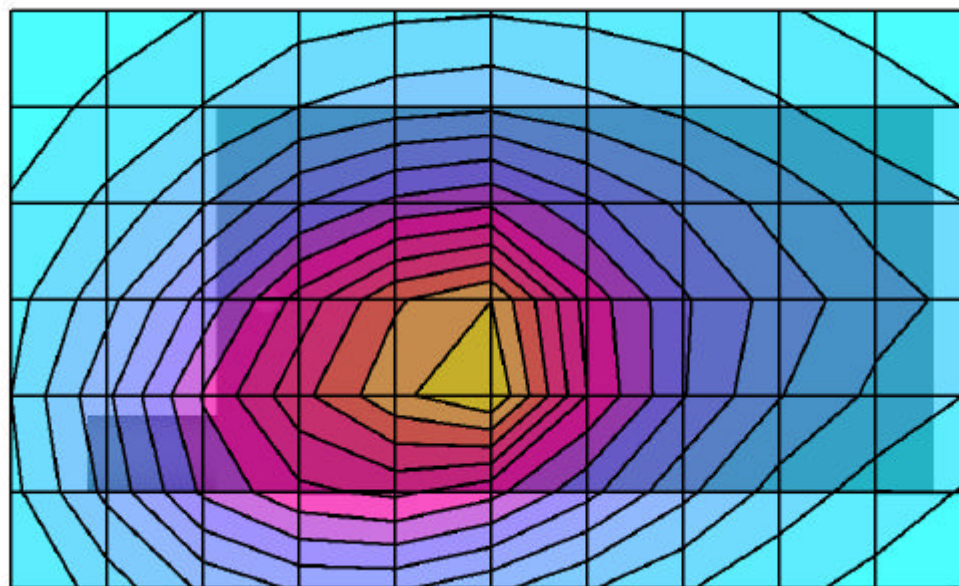


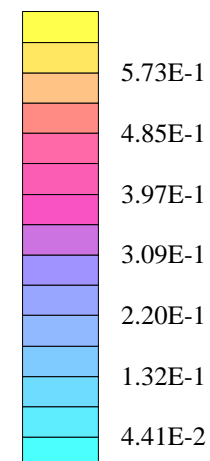
Handspring Inc. FCC ID: O8FDK

SAM Phantom; Flat Section; Position: (90°,270°)
Probe: ET3DV6 - SN1387; ConvF(6.40,6.40,6.40); Crest factor: 4.0
835 MHz Muscle: $\sigma = 0.99$ mho/m $\epsilon_r = 54.8$ $\rho = 1.00$ g/cm³
Coarse: Dx = 15.0, Dy = 15.0, Dz = 10.0
Cube 5x5x7
SAR (1g): 0.547 mW/g, SAR (10g): 0.382 mW/g

Body-worn SAR - Leather Side Case with Belt-Clip Accessory
Front Keypad Side of EUT facing Planar Phantom
Treo 600 Dual-Band GSM/GPRS Phone
Lithium-ion Battery
Fixed Stubby Antenna
Cellular GPRS Mode (2 Time Slots)
Channel: 190 [836.60 MHz]
Conducted Power: 32.95 dBm
Ambient Temp. 24.2°C; Fluid Temp. 21.5°C
Date Tested: June 26, 2003



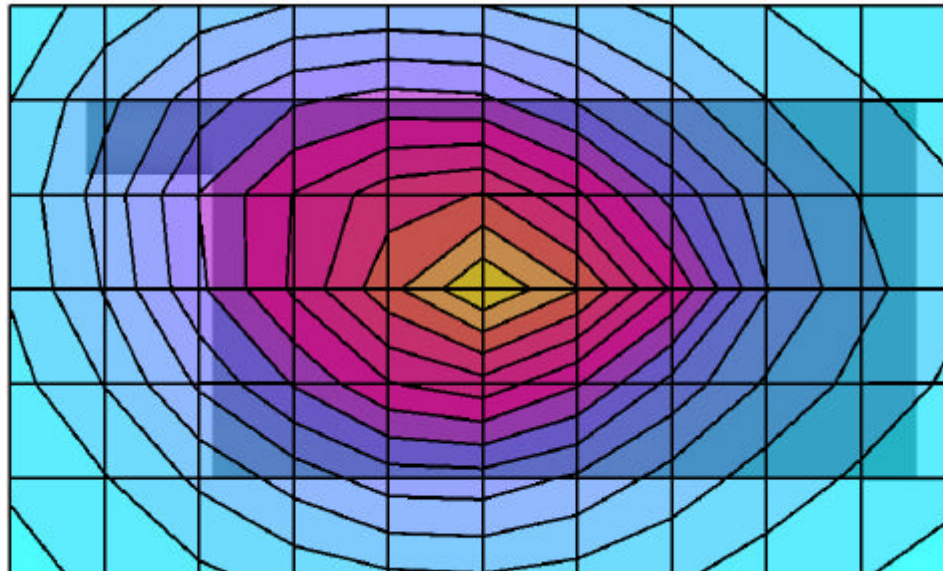
SAR_{Tot} [mW/g]



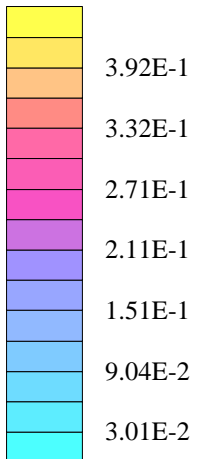
Handspring Inc. FCC ID: O8FDK

SAM Phantom; Flat Section; Position: (270°,90°)
Probe: ET3DV6 - SN1387; ConvF(6.40,6.40,6.40); Crest factor: 4.0
835 MHz Muscle: $\sigma = 0.99$ mho/m $\epsilon_r = 54.8$ $\rho = 1.00$ g/cm³
Coarse: Dx = 15.0, Dy = 15.0, Dz = 10.0
Cube 5x5x7
SAR (1g): 0.356 mW/g, SAR (10g): 0.250 mW/g

Body-worn SAR - Fitted Leather Case with Removable Belt-Clip & Ear-Microphone
Back Side of EUT facing Planar Phantom
Treo 600 Dual-Band GSM/GPRS Phone
Lithium-ion Battery
Fixed Stubby Antenna
Cellular GPRS Mode (2 Time Slots)
Channel: 190 [836.60 MHz]
Conducted Power: 32.93 dBm
Ambient Temp. 24.2°C; Fluid Temp. 21.5°C
Date Tested: June 26, 2003



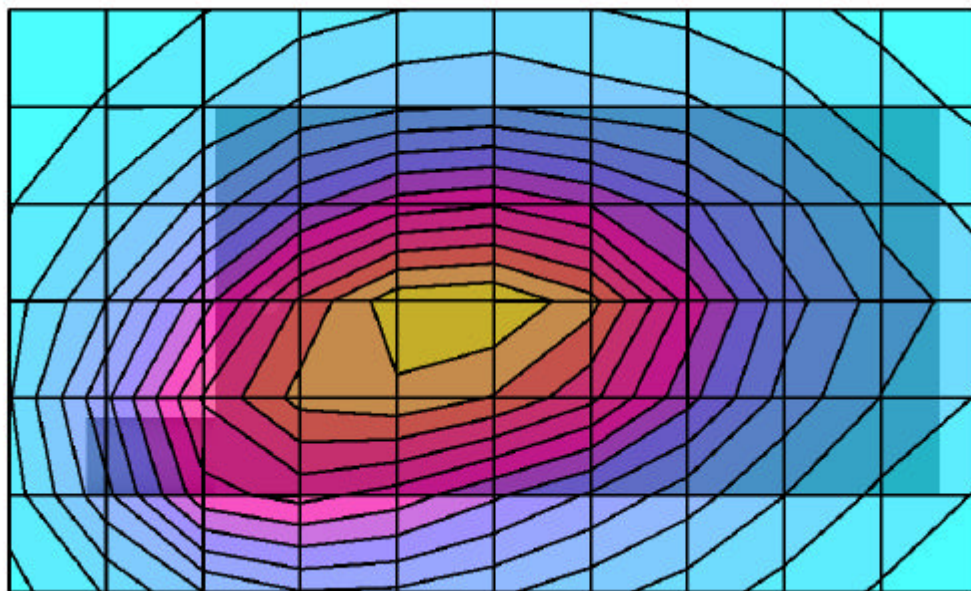
SAR_{Tot} [mW/g]



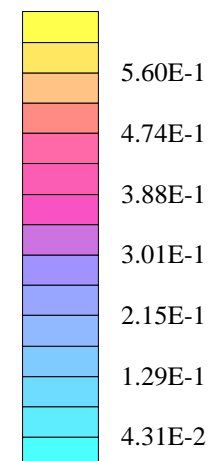
Handspring Inc. FCC ID: O8FDK

SAM Phantom; Flat Section; Position: (90°,270°)
Probe: ET3DV6 - SN1387; ConvF(6.40,6.40,6.40); Crest factor: 4.0
835 MHz Muscle: $\sigma = 0.99$ mho/m $\epsilon_r = 54.8$ $\rho = 1.00$ g/cm³
Coarse: Dx = 15.0, Dy = 15.0, Dz = 10.0
Cube 5x5x7
SAR (1g): 0.533 mW/g, SAR (10g): 0.396 mW/g

Body-worn SAR - Front Keypad Side of EUT with Ear-Microphone Accessory
1.0 cm Air Spacing between Front Side of EUT and Planar Phantom
Treo 600 Dual-Band GSM/GPRS Phone
Lithium-ion Battery
Fixed Stubby Antenna
Cellular GPRS Mode (2 Time Slots)
Channel: 190 [836.60 MHz]
Conducted Power: 32.96 dBm
Ambient Temp. 24.2°C; Fluid Temp. 21.5°C
Date Tested: June 26, 2003



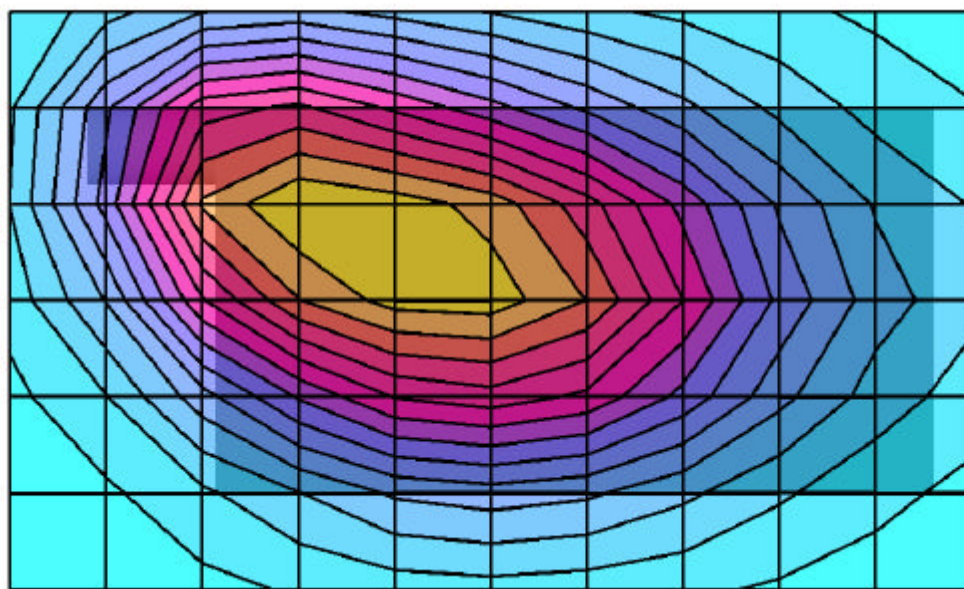
SAR_{Tot} [mW/g]



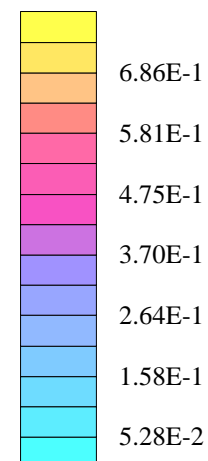
Handspring Inc. FCC ID: O8FDK

SAM Phantom; Flat Section; Position: (270°,90°)
Probe: ET3DV6 - SN1387; ConvF(6.40,6.40,6.40); Crest factor: 4.0
835 MHz Muscle: $\sigma = 0.99$ mho/m $\epsilon_r = 54.8$ $\rho = 1.00$ g/cm³
Coarse: Dx = 15.0, Dy = 15.0, Dz = 10.0
Cube 5x5x7
SAR (1g): 0.646 mW/g, SAR (10g): 0.481 mW/g

Body-worn SAR - Back Side of EUT with Ear-Microphone Accessory
1.0 cm Air Spacing between Back Side of EUT and Planar Phantom
Treo 600 Dual-Band GSM/GPRS Phone
Lithium-ion Battery
Fixed Stubby Antenna
Cellular GPRS Mode (2 Time Slots)
Channel: 190 [836.60 MHz]
Conducted Power: 32.93 dBm
Ambient Temp. 24.2°C; Fluid Temp. 21.5°C
Date Tested: June 26, 2003



SAR_{Tot} [mW/g]



Handspring Inc. FCC ID: O8FDK

SAM Phantom; Flat Section
Probe: ET3DV6 - SN1387; ConvF(6.40,6.40,6.40); Crest factor: 4.0
835 MHz Muscle: $\sigma = 0.99$ mho/m $\epsilon_r = 54.8$ $\rho = 1.00$ g/cm³

Z-Axis Extrapolation at Peak SAR Location

Body-worn SAR - Back Side of EUT with Ear-Microphone Accessory
1.0 cm Air Spacing between Back Side of EUT and Planar Phantom
Treo 600 Dual-Band GSM/GPRS Phone
Lithium-ion Battery
Fixed Stubby Antenna
Cellular GPRS Mode (2 Time Slots)
Channel: 190 [836.60 MHz]
Conducted Power: 32.93 dBm
Ambient Temp. 24.2°C; Fluid Temp. 21.5°C
Date Tested: June 26, 2003

