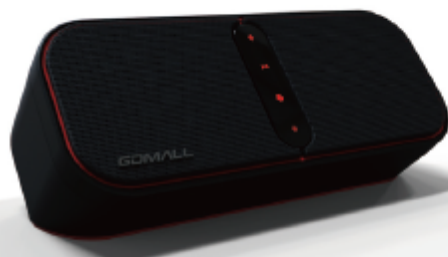


GDMALL

www.gdmallaudio.com

BLUETOOTH SPEAKER / GDMALL / BT5000N

Bluetooth 4.0 aptX®



STEREO 3D User Manual

A new Universe of Sound

Please feel free to contact us with questions, comments or just to say hello

uk@gdmallaudio.com



Overview

Thank you for your trust and belief in GDMALL Brand, Our wireless Bluetooth speaker can bring you the rock into your life.

With our GDMALL Bluetooth speakers you can listen to music with your compatible device, such as smart phones or any other Bluetooth music player. You can now listen to your favorite music wirelessly in high quality.

ABOUT BLUETOOTH

Bluetooth: A technology used for wireless connection. Most smart phones and media players are equipped with Bluetooth technology, which allows them to connect wirelessly to GDMALL Stereo 3D.

You can use Bluetooth to wirelessly connect devices and accessories to other compatible devices, such as phones. Devices do not need to be in direct line-of-sight, but they must be within 10 meters. This device is compliant with Bluetooth Specification 4.0.

Read this user manual carefully before using the product. Also, read the user manual for the device that is used to connect to this speaker.

ABOUT NFC

NFC stands for Near Field Communication. The GDMALL 3D Stereo with NFC so you can establish a Bluetooth connection with Bluetooth device by touching the device to the top of the GDMALL 3D stereo. (Bluetooth device must be equipped with NFC)

ABOUT YOUR SPEAKER

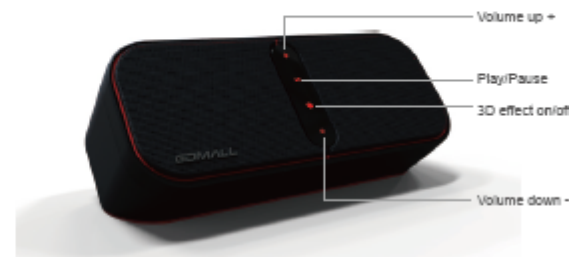
With the GDMALL Stereo 5 - 3D speaker, you can listen to music from your compatible device and enjoy "wired" alike high quality audio, adding up the NFC function, you can easily fill your room with music in just a tap.

SPECIFICATION

Advanced audio performance delivers a full-range listening experience
Micro USB Port for charging
Utilizes Bluetooth A2DP high-fidelity audio transmission to easily connect with Bluetooth enabled devices
3D Sound setting simulated surround sound effect for a truly immersive audio experience
Wirelessly stream your music from a smartphone or tablet via Bluetooth
Long lasting rechargeable Lithium-ion battery for 18 hours of wireless music streaming
Auxiliary 3.5mm input for connecting to MP3 players, laptops and other non-Bluetooth devices
Power button for power on/off and pairing
Touch panel for play/pause, volume up/down and enable 3D enhance
LEDs indication for mode status
Act as NFC Tag to approve Bluetooth audio function
aptX, SBC, MP3 and AAC decode support
HSP, HFP, A2DP, AVRCP profile support
Support for smartphone/tablet applications
Supported sample rates of 32k, 44,1k, 48k and 96kHz

PHYSICAL FEATURES

Power button/Pairing button
Led status indication
NFC tag area
Volume up +
Volume down -
Play/Pause
3D effect on/off
3.5mm audio in
Micro USB connector
Charging indicator
Bass tube





LED INDICATION

Flash blue: Power on
Blinking blue: Pairing mode

ABOUT BLUETOOTH 4.0 + aptX

You can use Bluetooth to wirelessly connect accessories to other compatible devices, such as phones. Devices do not need to be in direct line-of-sight but they must be within 10 meters.

This speaker is compliant with Bluetooth specification 4.0 supporting aptX decoding. Other than the low latency and low energy benefit from Bluetooth 4.0, the aptX audio codec, when incorporated with A2DP stereo products, aptX audio coding delivers a full "Wired" audio alike quality.

PAIRING WITH NFC DEVICES

1. Turn on your device's NFC function.
2. Tap your device's NFC tag with the speaker's NFC tag area for approx. 2-3 sec to connect, when connected you will hear an indication sound.
3. Once connected, you can play music, and turn on/off 3D effect with the touch panel, as well as control volume or play/pause with either the touch panel or your device.
4. To disconnect, you can tap the device's NFC tag with the speaker's NFC area, turn off the speaker or turn off your device's Bluetooth.
5. When turning off the speaker, press and hold the Power button (approx. 5 sec) or tap the NFC tag for approx. 2-3 sec., you will hear the indication sound and the LED goes off.

*Volume +/- touch: can press and hold to control volume

PAIRING WITH NON-NFC DEVICES

*Speaker must be turned off before going into pairing mode.

1. Press and hold the Pairing button (approx. 5-6 sec) until the LED turns from flashing blue to blinking blue, you will hear the indication sound twice.
2. Turn on your device's Bluetooth, search and connect to GDMALL BT5000N.

3. Once connected, you can play music, and turn on/off 3D effect with the touch panel, as well as control volume or play/pause with either the touch panel or your device.

4. To disconnect, turn off the speaker or your device's Bluetooth. When turning off the speaker, press and hold the Power button (approx. 3 sec), you will hear the indication sound and the LED goes off.

CHARGING THE BATTERY

1. Connect the USB of the charger cable to your USB AC adapter then to a wall outlet or to your Computer.
2. Connect the other end (Micro USB) of the charger cable to the Micro USB connector on the speaker.
3. When the battery is fully charged, the charging indicator will go off.
4. When the battery is fully charged, disconnect the charger cable from the speaker first.

You can also use a compatible Micro USB to USB cable to charge the battery. Charging may not work if connected through a non-powered USB hub. You can only use the USB connection to charge the battery.

POWER SAVING

After 15 minutes of standby, the speaker will turn off automatically to save battery power.

NOTICE: Please read this user manual and the user manual of the compatible device before using this product.

WARNING: This product may contain small parts. Keep out of the reach of small children.

Federal Communication Commission Interference Statement

This equipment has been tested and found to comply with the limits for a Class B digital device, pursuant to Part 15 of the FCC Rules. These limits are designed to provide reasonable protection against harmful interference in a residential installation.

This equipment generates, uses and can radiate radio frequency energy and, if not installed and used in accordance with the instructions, may cause harmful interference to radio communications. However, there is no guarantee that interference will not occur in a particular installation.

If this equipment does cause harmful interference to radio or television reception, which can be determined by turning the equipment off and on, the user is encouraged to try to correct the interference by one of the following measures:

- . Reorient or relocate the receiving antenna.
- . Increase the separation between the equipment and receiver.
- . Connect the equipment into an outlet on a circuit different from that to which the receiver is connected.
- . Consult the dealer or an experienced radio/TV technician for help.

FCC Caution: To assure continued compliance, any changes or modifications not expressly approved by the party responsible for compliance could void the user's authority to operate this equipment. (Example - use only shielded interface cables when connecting to computer or peripheral devices).

FCC Radiation Exposure Statement

This transmitter must not be co-located or operating in conjunction with any other antenna or transmitter.

This device complies with Part 15 of the FCC Rules. Operation is subject to the following two conditions:

- (1) This device may not cause harmful interference, and (2) This device must accept any interference received, including interference that may cause undesired operation.

© Global Digitech Co., LTD. All rights reserved. GDMALL AUDIO is a trademark of Global Digitech Co., LTD. "GDMALL", the GDMALL logo, the product and the packaging are trademarks or registered trademarks of Global Digitech Co., LTD., or its subsidiaries in the UK ,USA ,China, Taiwan or other countries.
Product may vary from images shown. This product is patented.