

1 Annex C – documentation

1.1 List of Pictures

Picture 1: EUT - open battery compartment2

Picture 2: EUT - open housing.....3

Picture 3: EUT - main PCB, bottom side3

Picture 4: EUT - main PCB, top side4

Picture 5: EUT - main PCB, top side zoomed to RF part.....4

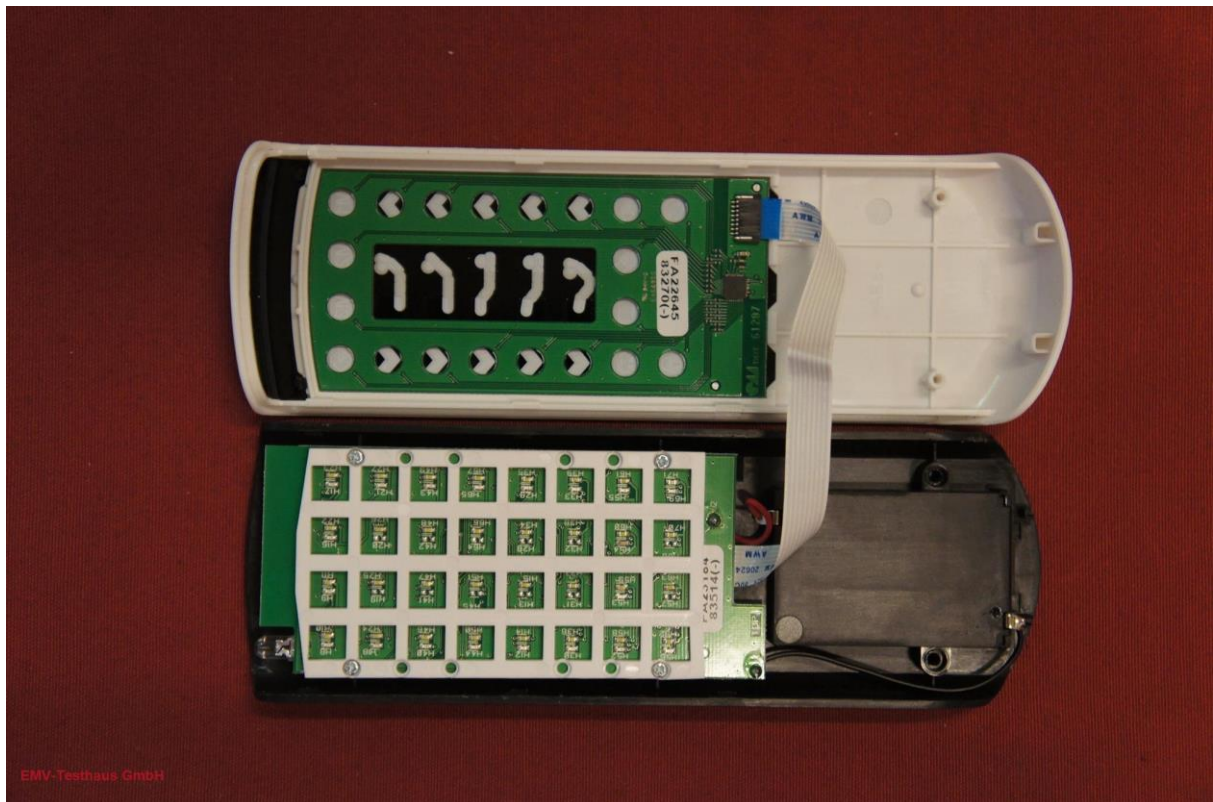


EMV **TESTHAUS** GmbH
Gustav-Hertz-Straße 35
94315 Straubing
Germany

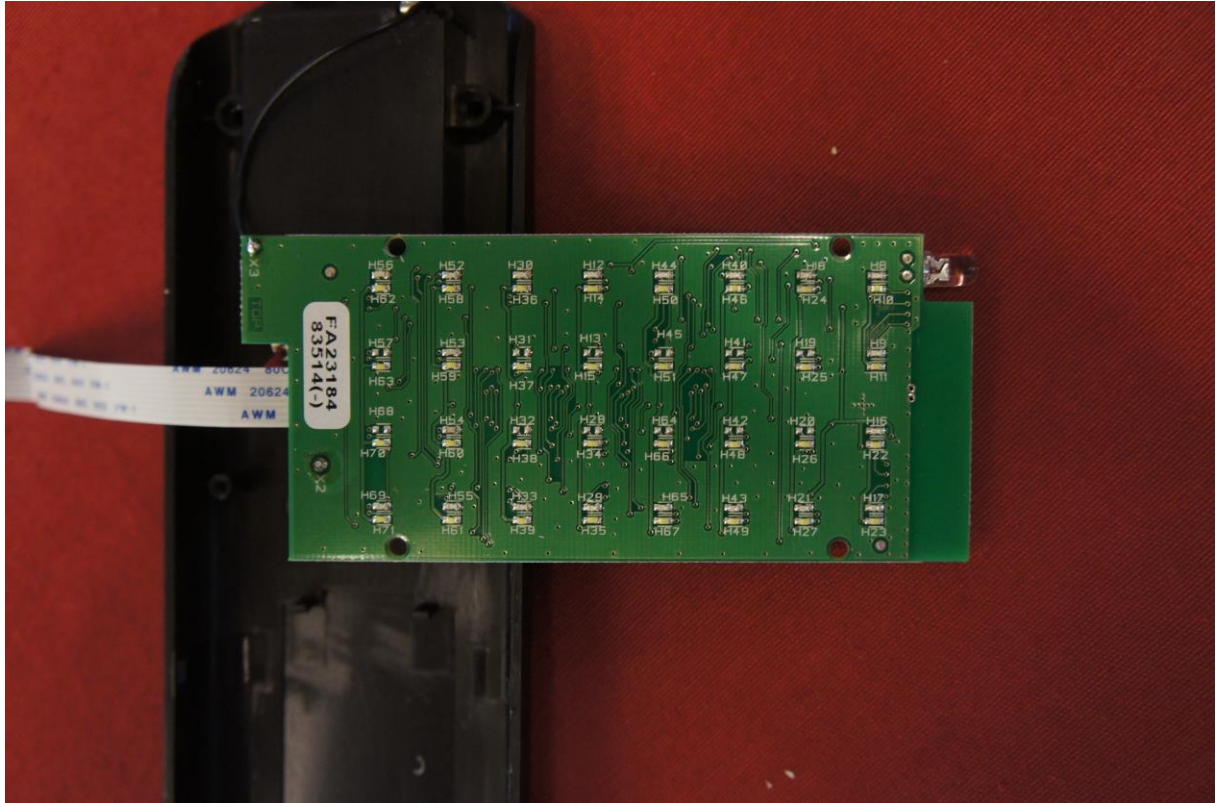
DewertOkin GmbH
RF Remote Control
RF-Touch



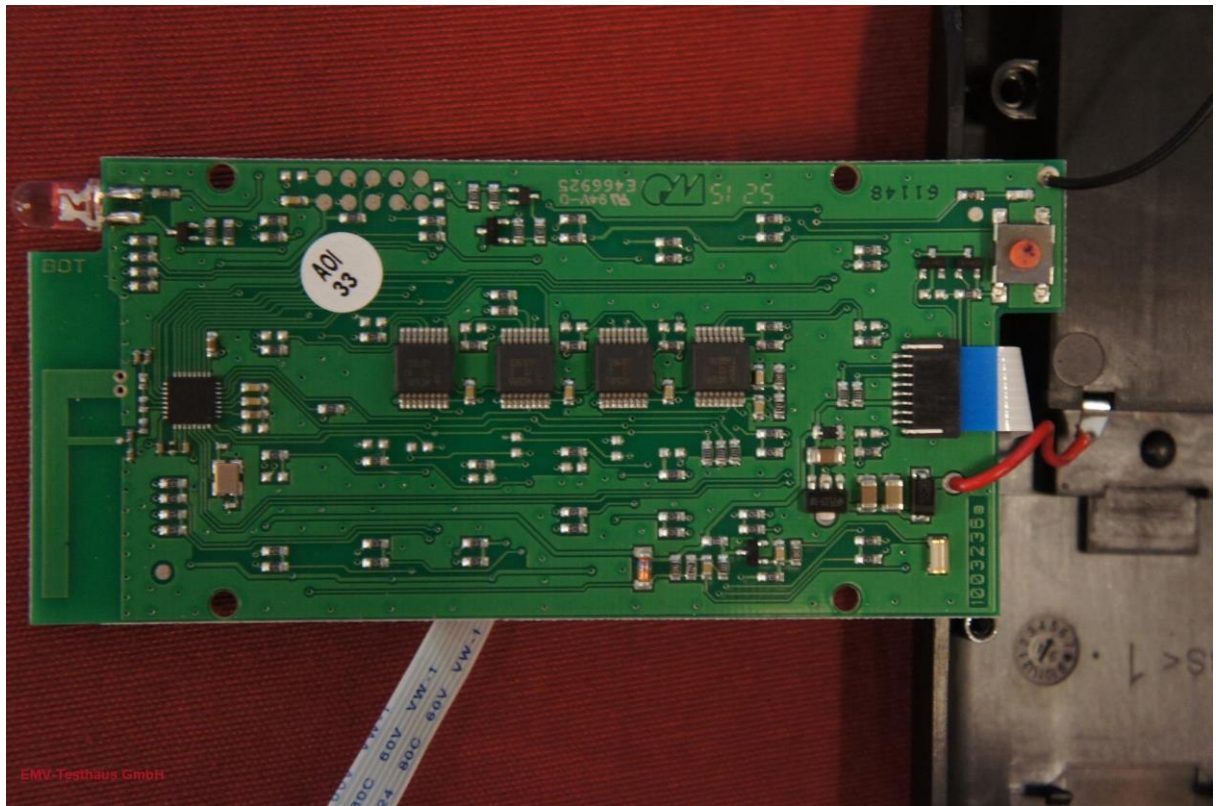
Picture 1: EUT - open battery compartment



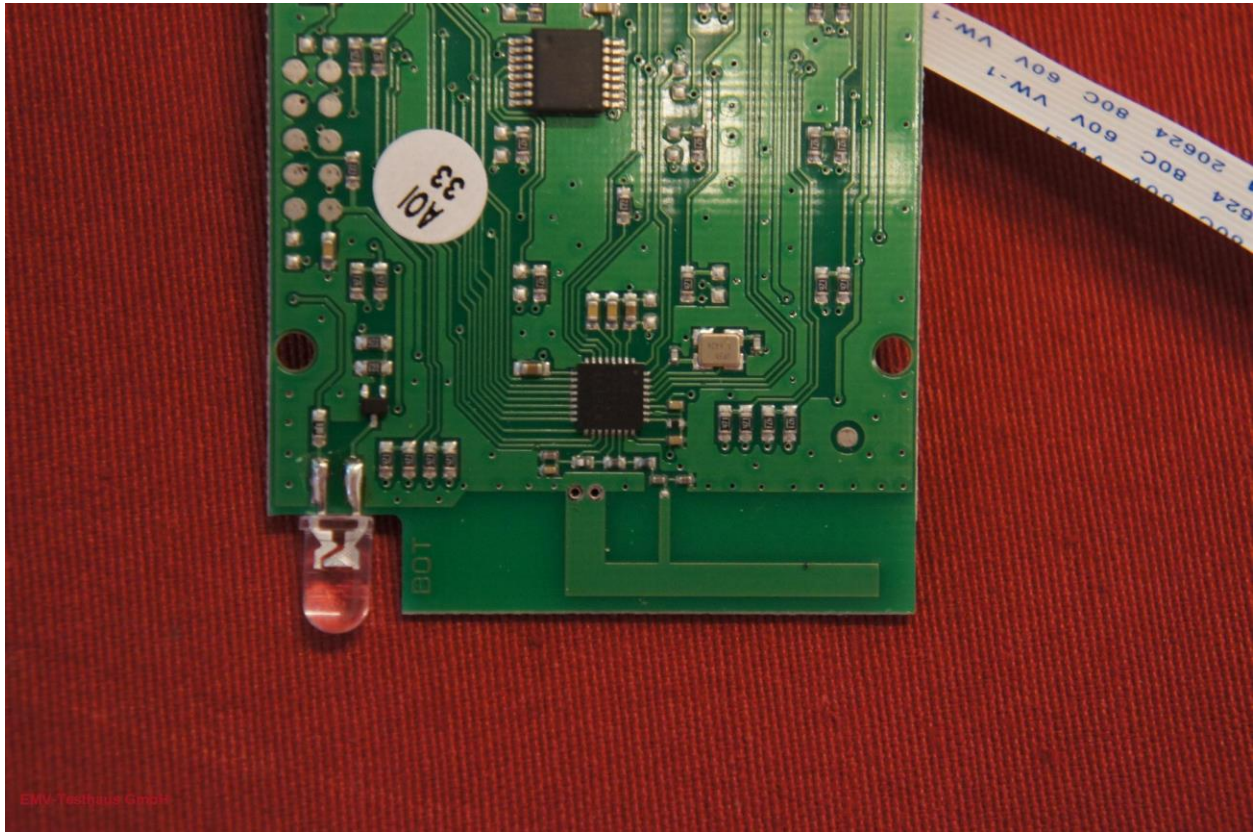
Picture 2: EUT - open housing



Picture 3: EUT - main PCB, bottom side



Picture 4: EUT - main PCB, top side



Picture 5: EUT - main PCB, top side zoomed to RF part