

UAHL6A Antenna Information

Sub GHz Trace Antenna

Dimensions – Length=62mm

Width= 1mm

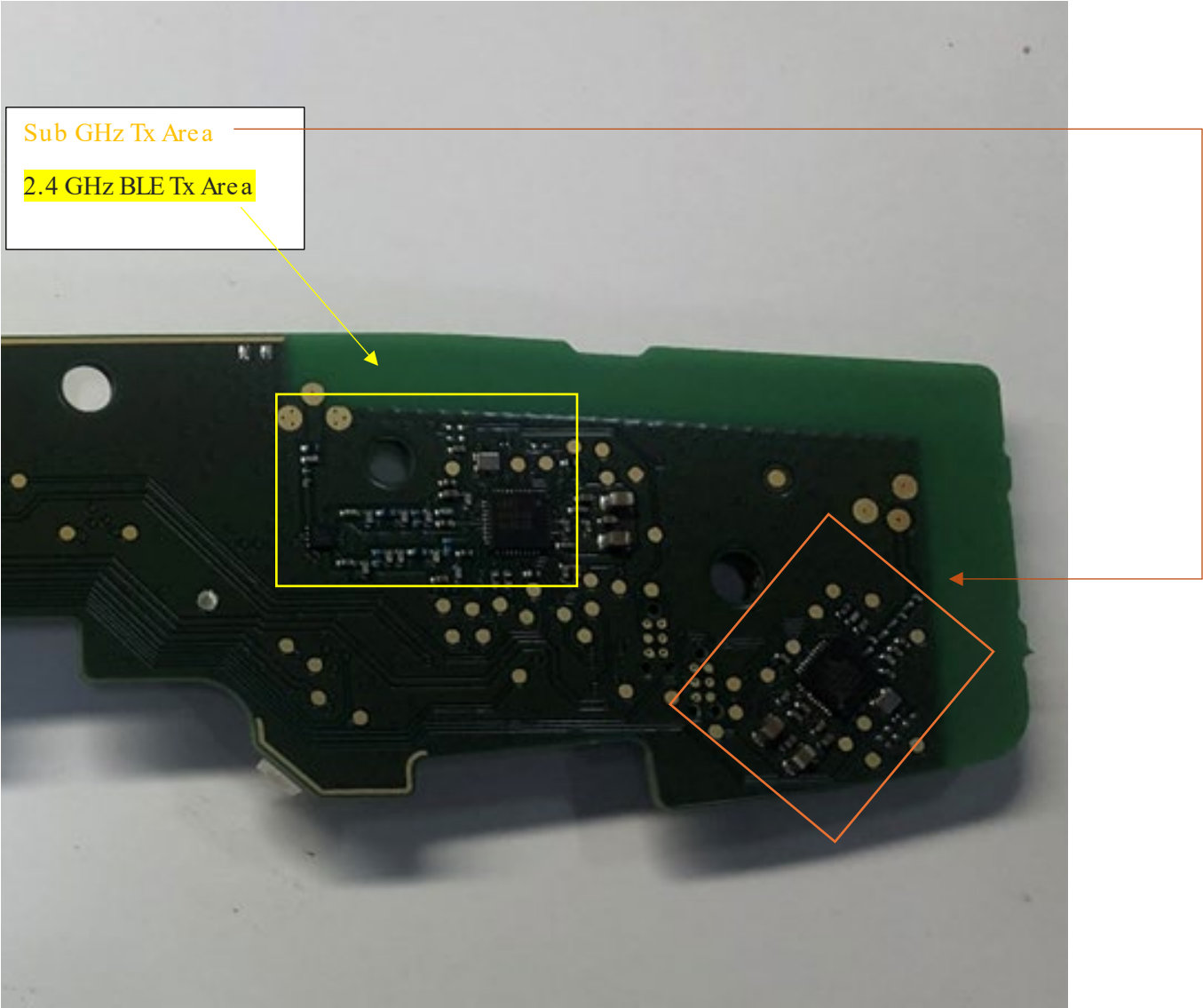
2.4 GHz BLE Trace Antenna

Dimensions – Length=20mm

Width= 1mm



UAHL6AAntenna Information



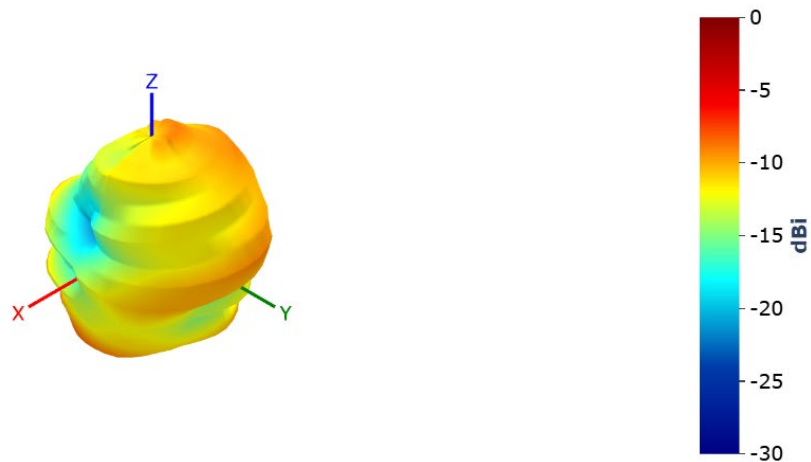
UAHL6A Antenna Information

Antenna 3D Radiation Pattern 902-928 MHz

Note: The following radiation patterns and antenna gain were derived from OTA measurements which were done in passive mode not taking the antenna network into account when the part is powered on and transmitting. The antenna gain values referenced on the 15.247 (section 7 of the 15.247 reppt and section 8 of the Bluetooth LE report) reports are a calculation of maximum EIRP subtracted from the peak conducted output power in dBm at a given frequency. At frequencies 902-926MHz the antenna gain values range from -4.2dBi to 3.92dBi referencing the OTA measurements versus the antenna gain claculations. For 2402-2480MHz, values range from -4.85dBi to -0.3 dBi. Worse case antenna gain values were factored into the RF exposure assements. See details below.

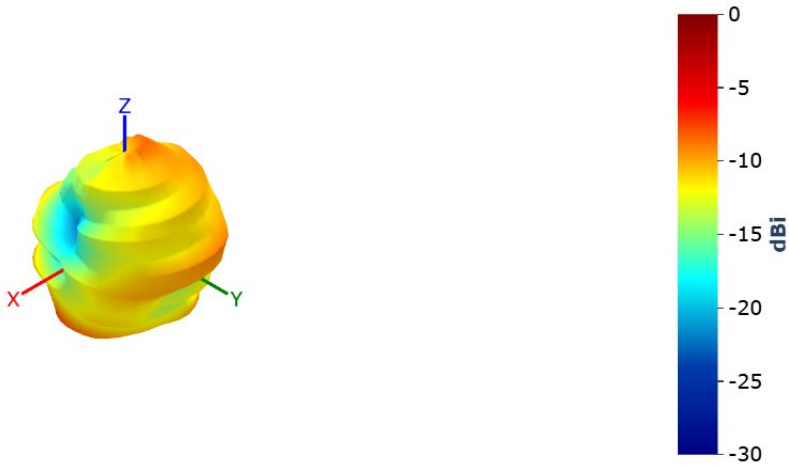
Frequency (MHz)	Antenna Gain (dBi) (EIRP-Conducted)	Antennal Lab AG (dBi)(sample unpowered)
902	3.92	-4.2
914	1.30	-3.9
926	-0.43	-3.9
2402	-3.76	-0.3
2440	-4.85	-1.2
2480	-4.27	-1.3

902MHz-Peak Antenna Gain -4.2 dBi



UAHL6A Antenna Information

914 MHz Peak Antenna Gain -3.9 dBi



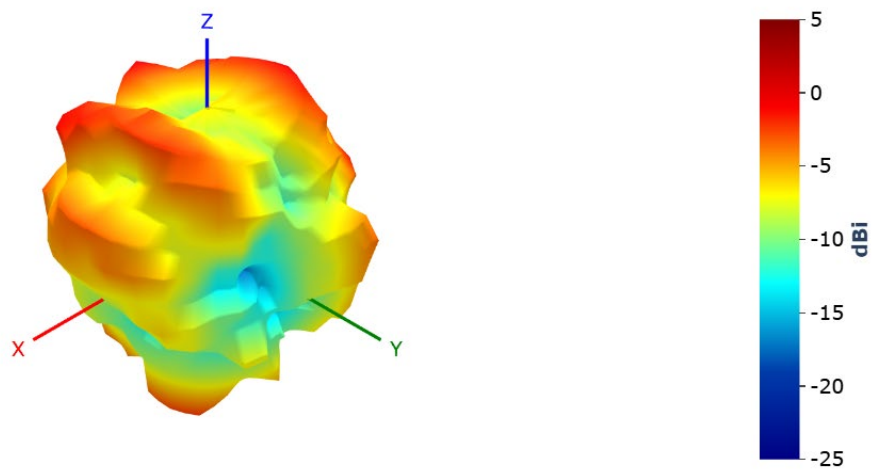
926 MHz Peak Antenna Gain -3.9 dBi

UAHL6A Antenna Information



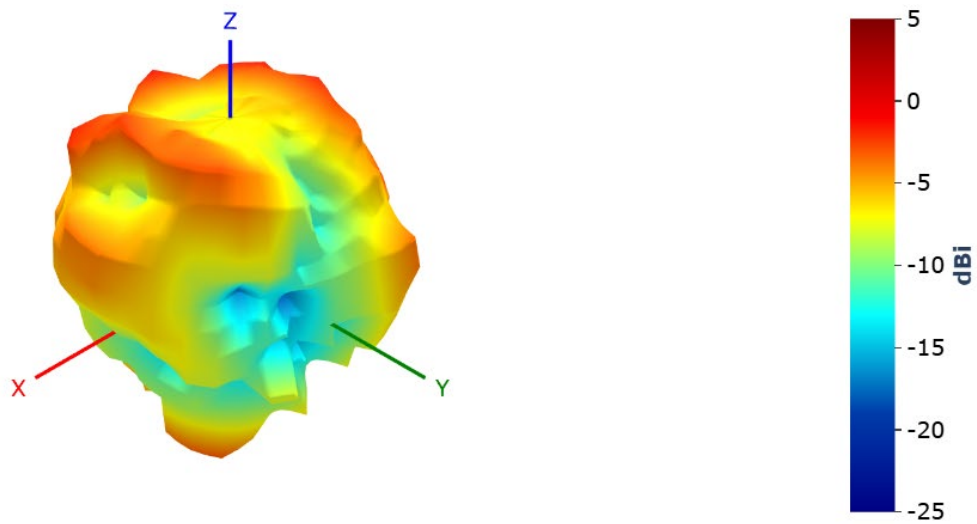
Antenna 3D Radiation Pattern 2402-2480 MHz

2402 MHz Peak Antenna Gain -0.3 dBi

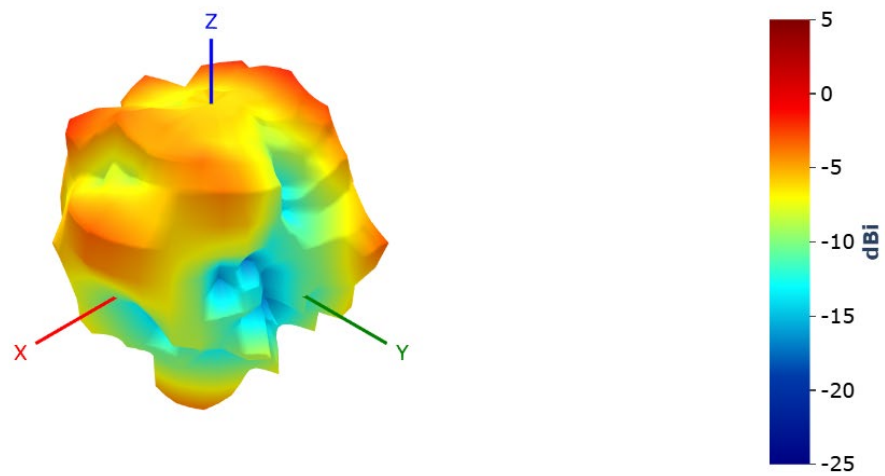


2440 MHz Peak Antenna Gain -1.2 dBi

UAHL6A Antenna Information



2480 MHz Peak Antenna Gain -1.3 dBi



UAHL6A Antenna Information