

Using Bluetooth

The MobileMapper CE is equipped with built-in Bluetooth technology that allows short-range connections to other Bluetooth-enabled devices such as cellular phones, personal digital assistants (PDA), and desktop or notebook computers, and provides fast, reliable, and secure wireless communication.

Working with Bluetooth Manager

Use the Bluetooth Manager to find, configure and establish connections to other Bluetooth devices. To start the Bluetooth Manager:

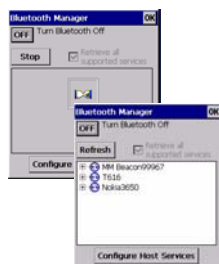
- Tap  > Settings > Control Panel and double-tap BTManager.

The  icon now appears in the system tray.



Turning On/Off Bluetooth

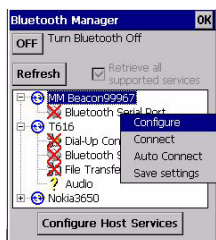
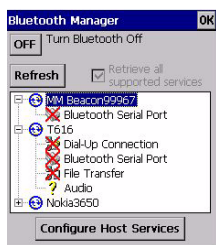
- Tap the ON button on Bluetooth Manager. The MobileMapper CE starts to search for other available Bluetooth devices that are within range. The detected devices are then listed.
- To preserve battery power, we recommend that you enable (turn on) Bluetooth only when using it: Tap the OFF button on Bluetooth Manager to disable Bluetooth.



Supported Services

The functions that Bluetooth supports are called services. MobileMapper CE can communicate with Bluetooth devices that support the following services:

- Serial Port: A direct wireless connection to RS232 compatible devices.



- Dial-up Networking: Enables dial-up network to a cellular phone or modem via a Bluetooth-enabled modem.
- File Transfer: Supports the OBEX communication protocol which allows the MobileMapper CE to send and receive files from other connected Bluetooth devices.

To see a list of services offered by the detected device, click the box next to the device name. If a check mark appears over the service icon, the service has been activated (see figure opposite).

Configuring Services

- Tap and hold the service that you want to connect to, and then tap Configure (see figure opposite)
- Tap Save settings to save the service configuration settings.

Transferring Files

You can exchange files with a connected device. You can use the File Transfer service to:

- Browse through the directories
- View files and folders
- Transfer files to / from a remote device.

Follow the instructions below:

- Tap and hold a File Transfer service, then tap Configure.
- To authenticate the client, check the **Authenticate** check box and type in a password (see figure opposite). When the other device connects to this service, it must enter a passkey to establish the connection. Secured connection is an encrypted connection, which requires an authentication. This step is optional.
- Tap and hold File Transfer service, then tap **Connect**. A check mark now appears over the service icon.
- Tap and hold File Transfer service, then tap **Browse**.

