
SAR Test Report

Report No.: AGC05198160801FH01

FCC ID : NMCAMP02

APPLICATION PURPOSE : Original Equipment

PRODUCT DESIGNATION : Bluetooth headset

BRAND NAME : UCLEAR-DIGITAL

MODEL NAME : AMP PRO, AMP, AMP PLUS, AMP 300, AMP GO

CLIENT : Bitwave Private Limited

DATE OF ISSUE : Jan. 21,2017

STANDARD(S) : IEEE Std. 1528:2013
FCC 47CFR § 2.1093
IEEE/ANSI C95.1:2005

REPORT VERSION : V1.0

Attestation of Global Compliance(Shenzhen) Co., Ltd.

CAUTION:

This report shall not be reproduced except in full without the written permission of the test laboratory and shall not be quoted out of context.



Report Revise Record

Report Version	Revise Time	Issued Date	Valid Version	Notes
V1.0	/	Jan. 21,2017	Valid	Original Report

Test Report Certification

Applicant Name	Bitwave Private Limited
Applicant Address	11, Serangoon North Ave 5 , #05-03 Singapore 554809
Manufacturer Name	Bitwave Private Limited
Manufacturer Address	11, Serangoon North Ave 5 , #05-03 Singapore 554809
Product Designation	Bluetooth headset
Brand Name	UCLEAR-DIGITAL
Model Name	AMP PRO, AMP, AMP PLUS, AMP 300, AMP GO
Different Description	All the same, except for the model name, speakers and microphone. The test model is AMP PRO
EUT Voltage	DC3.7V by battery
Applicable Standard	IEEE Std. 1528:2013 FCC 47CFR § 2.1093 IEEE/ANSI C95.1:2005
Test Date	Jan. 18,2017 to Jan. 20,2017
Performed Location	Attestation of Global Compliance(Shenzhen) Co., Ltd. 2 F, Building 2, No.1-No.4, Chaxi Sanwei Technical Industrial Park, Gushu, Xixiang Street, Bao'an District, Shenzhen, China
Report Template	AGCRT-US-2.4G/SAR (2016-01-01)

Bobby Wang

Tested By _____
Bobby wang(Wang Zhicheng) Jan. 20,2017

Angela Li

Checked By _____
Angela Li(Li Jiao) Jan. 21,2017

Solger Zhang

Authorized By _____
Solger Zhang(Zhang Hongyi) Jan. 21,2017
Authorized Officer

TABLE OF CONTENTS

1. SUMMARY OF MAXIMUM SAR VALUE	5
2. GENERAL INFORMATION.....	6
2.1. EUT DESCRIPTION.....	6
3. SAR MEASUREMENT SYSTEM.....	7
3.1. THE DASY5 SYSTEM USED FOR PERFORMING COMPLIANCE TESTS CONSISTS OF FOLLOWING ITEMS	7
3.2. DASY5 E-FIELD PROBE.....	8
3.3. DATA ACQUISITION ELECTRONICS DESCRIPTION	8
3.4. ROBOT.....	9
3.5. LIGHT BEAM UNIT	9
3.6. DEVICE HOLDER.....	10
3.7. MEASUREMENT SERVER.....	10
3.8. PHANTOM.....	11
4. SAR MEASUREMENT PROCEDURE	12
4.1. SPECIFIC ABSORPTION RATE (SAR).....	12
4.2. SAR MEASUREMENT PROCEDURE	13
5. TISSUE SIMULATING LIQUID	15
5.1. THE COMPOSITION OF THE TISSUE SIMULATING LIQUID.....	15
5.2. TISSUE DIELECTRIC PARAMETERS FOR HEAD AND BODY PHANTOMS	15
5.3. TISSUE CALIBRATION RESULT	16
6. SAR SYSTEM CHECK PROCEDURE	17
6.1. SAR SYSTEM CHECK PROCEDURES	17
6.2. SAR SYSTEM CHECK.....	18
7. SAR EXPOSURE LIMITS	20
8. TEST EQUIPMENT LIST	21
9. MEASUREMENT UNCERTAINTY	22
10. CONDUCTED POWER MEASUREMENT.....	26
11. TEST RESULTS	27
11.1. SAR TEST RESULTS SUMMARY	27
APPENDIX A. SAR SYSTEM CHECK DATA	31
APPENDIX B. SAR MEASUREMENT DATA.....	33
APPENDIX C. TEST SETUP PHOTOGRAPHS & EUT PHOTOGRAPHS.....	49
APPENDIX D. CALIBRATION DATA	49

1. SUMMARY OF MAXIMUM SAR VALUE

The maximum results of Specific Absorption Rate (SAR) found during testing for EUT are as follows:

Test Mode	Highest Reported 1g-SAR(W/Kg)	SAR Test Limit (W/Kg)
	Bluetooth	
Head SAR(with 0mm separation)	1.208	1.6
Body SAR(with 0mm separation)	0.803	
Test Mode	Highest Reported 10g-Extremity SAR(W/Kg)	SAR Test Limit (W/Kg)
Body SAR(with 0mm separation)	0.418	4.0
SAR Test Result	PASS	

This device is compliance with Specific Absorption Rate (SAR) for general population/uncontrolled exposure limits (1.6W/Kg) specified in IEEE Std. 1528:2013; FCC 47CFR § 2.1093; IEEE/ANSI C95.1:2005 and the following specific FCC Test Procedures:

- KDB 447498 D01 General RF Exposure Guidance v06
- KDB 865664 D01 SAR measurement 100 MHz to 6 GHz v01r04

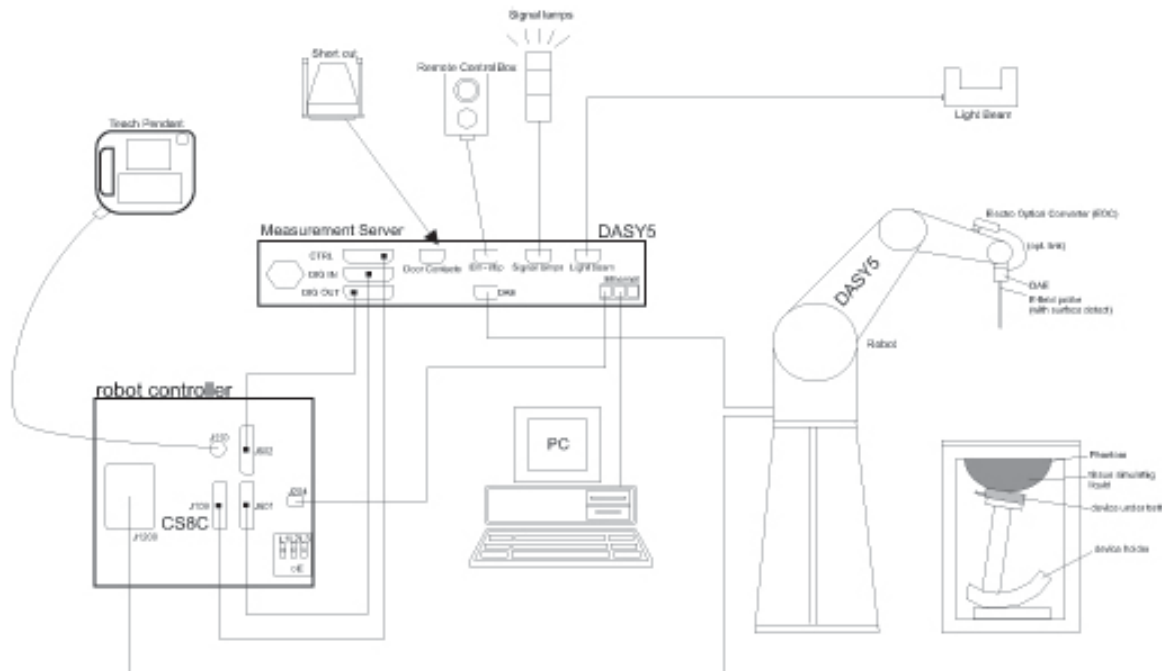
2. GENERAL INFORMATION

2.1. EUT Description

General Information	
Product Designation	Bluetooth headset
Test Model	AMP PRO
Hardware Version	210b
Software Version	1.33
Device Category	Portable
RF Exposure Environment	Uncontrolled
Antenna Type	Fixed
Bluetooth	
Bluetooth Version	<input type="checkbox"/> V2.0 <input type="checkbox"/> V2.1 <input type="checkbox"/> V2.1+EDR <input type="checkbox"/> V3.0 <input type="checkbox"/> V3.0+HS <input type="checkbox"/> V4.0 <input type="checkbox"/> V4.1 <input checked="" type="checkbox"/> V4.2
Operation Frequency	2402~2480MHz
Type of modulation	<input checked="" type="checkbox"/> GFSK <input checked="" type="checkbox"/> π/4-DQPSK <input checked="" type="checkbox"/> 8-DPSK
Maximum Peak Power	20.86dBm
Antenna Gain	2.3dBi
Accessories	
Battery	Brand name: A&S Power Model No. : 602535 Voltage and Capacitance: 3.7V, 500mAh
Note: The sample used for testing is end product.	
Product	Type
	<input checked="" type="checkbox"/> Production unit <input type="checkbox"/> Identical Prototype

3. SAR MEASUREMENT SYSTEM

3.1. The DASY5 system used for performing compliance tests consists of following items




- A standard high precision 6-axis robot with controller, teach pendant and software.
- Data acquisition electronics (DAE) which attached to the robot arm extension. The DAE consist of a highly sensitive electrometer-grade preamplifier with auto-zeroing, a channel and gain-switching multiplexer, a fast 16 bit AD-converter and a command decoder with a control logic unit. Transmission to the measurement server is accomplished through an optical downlink for data and status information, as well as an optical uplink for commands and the clock
- A dosimetric probe equipped with an optical surface detector system.
- The Electro-optical converter (EOC) performs the conversion from optical to electrical signals for the digital Communication to the DAE. To use optical surface detection, a special version of the EOC is required. The EOC signal is transmitted to the measurement server.
- A Light Beam used is for probe alignment. This improves the (absolute) accuracy of the probe positioning.
- A computer running WinXP and the DASY5 software.
- Remote control and teach pendant as well as additional circuitry for robot safety such as warning lamps, etc.
- Phantoms, device holders and other accessories according to the targeted measurement.

3.2. DASY5 E-Field Probe

The SAR measurement is conducted with the dosimetric probe manufactured by SPEAG. The probe is specially designed and calibrated for use in liquid with high permittivity. The dosimetric probe has special calibration in liquid at different frequency. SPEAG conducts the probe calibration in compliance with international and national standards (e.g. IEEE 1528 and relevant KDB files.) The calibration data are in Appendix D.

Isotropic E-Field Probe Specification


Model	ES3DV3	
Manufacture	SPEAG	
frequency	0.15GHz-3 GHz Linearity:±0.2dB(150 MHz-3 GHz)	
Dynamic Range	0.01W/Kg-100W/Kg Linearity:±0.2dB	
Dimensions	Overall length:337mm Tip diameter:4mm Typical distance from probe tip to dipole centers:2mm	
Application	High precision dosimetric measurements in any exposure scenario (e.g., very strong gradient fields). Only probe which enables compliance testing for frequencies up to 3 GHz with precision of better 30%.	

3.3. Data Acquisition Electronics description

The data acquisition electronics (DAE) consist if a highly sensitive electrometer-grade preamplifier with auto-zeroing, a channel and gain-switching multiplexer, a fast 16 bit AD-converte and a command decoder with a control logic unit. Transmission to the measurement sever is accomplished through an optical downlink fir data and status information, as well as an optical uplink for commands and the clock.

The mechanical probe mounting device includes two different sensor systems for frontal and sideways probe contacts. They are used for mechanical surface detection and probe collision detection.

DAE4

Input Impedance	200MOhm	
The Inputs	Symmetrical and floating	
Common mode rejection	above 80 dB	

3.4. Robot

The DASY system uses the high precision robots (DASY5:TX60) type from Stäubli SA (France). For the 6-axis controller system, the robot controller version from is used.

The XL robot series have many features that are important for our application:

- High precision (repeatability 0.02 mm)
- High reliability (industrial design)
- Jerk-free straight movements
- Low ELF interference (the closed metallic construction shields against motor control fields)
- 6-axis controller



3.5. Light Beam Unit

The light beam switch allows automatic “tooling” of the probe. During the process, the actual position of the probe tip with respect to the robot arm is measured, as well as the probe length and the horizontal probe offset. The software then corrects all movements, such that the robot coordinates are valid for the probe tip.

The repeatability of this process is better than 0.1 mm. If a position has been taught with an aligned probe.1 mm, even if the other probe has different dimensions. During probe rotations, the probe tip will keep its actual position. e, the same position will be reached with another aligned probe within 0



3.6. Device Holder

The DASY device holder is designed to cope with different positions given in the standard. It has two scales for the device rotation (with respect to the body axis) and the device inclination (with respect to the line between the ear reference points). The rotation center for both scales is the ear reference point (EPR).

Thus the device needs no repositioning when changing the angles.

The DASY device holder has been made out of low-loss POM material having the following dielectric parameters: relative permittivity $\epsilon=3$ and loss tangent $\delta = 0.02$. The amount of dielectric material has been reduced in the closest vicinity of the device, since measurements have suggested that the influence of the clamp on the test results could thus be lowered.



3.7. Measurement Server

The measurement server is based on a PC/104 CPU board with CPU (DASY5: 400 MHz, Intel Celeron), chip-disk (DASY5: 128MB), RAM (DASY5: 128MB). The necessary circuits for communication with the DAE electronic box, as well as the 16 bit AD converter system for optical detection and digital I/O interface are contained on the DAYS I/O board, which is directly connected to the PC/104 bus of the CPU board.

The measurement server performs all the real-time data evaluation for field measurements and surface detection, controls robot movements and handles safety operations.



3.8. PHANTOM SAM Twin Phantom

The SAM twin phantom is a fiberglass shell phantom with 2mm shell thickness (except the ear region where shell thickness increases to 6mm). It has three measurement areas:

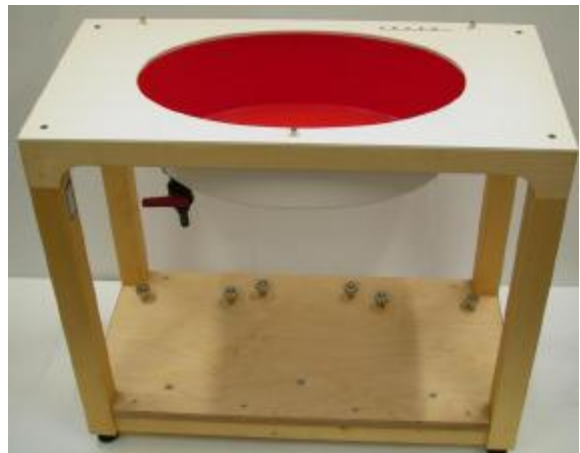
- Left head
- Right head
- Flat phantom



The bottom plate contains three pair of bolts for locking the device holder. The device holder positions are adjusted to the standard measurement positions in the three sections. A white cover is provided to tap the phantom during off-periods to prevent water evaporation and changes in the liquid parameters. On the phantom top, three reference markers are provided to identify the phantom position with respect to the robot.

ELI4 Phantom

- Flat phantom a fiberglass shell flat phantom with 2mm \pm 0.2 mm shell thickness. It has only one measurement area for Flat phantom



4. SAR MEASUREMENT PROCEDURE

4.1. Specific Absorption Rate (SAR)

SAR is related to the rate at which energy is absorbed per unit mass in object exposed to a radio field. The SAR distribution in a biological body is complicated and is usually carried out by experimental techniques or numerical modeling. The standard recommends limits for two tiers of groups, occupational/controlled and occupational/uncontrolled, based on a person's awareness and ability to exercise control over his or her exposure. In general, occupational/controlled exposure limits are higher than the limits for general population/uncontrolled.

The SAR definition is the time derivative (rate) of the incremental energy (dW) absorbed by (dissipated in) an incremental mass (dm) contained in a volume element (dv) of given mass density (ρ). The equation description is as below:

$$SAR = \frac{d}{dt} \left(\frac{dW}{dm} \right) = \frac{d}{dt} \left(\frac{dW}{\rho dV} \right)$$

SAR is expressed in units of Watts per kilogram (W/Kg)

SAR can be obtained using either of the following equations:

$$SAR = \frac{\sigma E^2}{\rho}$$

$$SAR = c_h \left. \frac{dT}{dt} \right|_{t=0}$$

Where

SAR	is the specific absorption rate in watts per kilogram;
E	is the r.m.s. value of the electric field strength in the tissue in volts per meter;
σ	is the conductivity of the tissue in siemens per metre;
ρ	is the density of the tissue in kilograms per cubic metre;
c_h	is the heat capacity of the tissue in joules per kilogram and Kelvin;

$\left. \frac{dT}{dt} \right|_{t=0}$ is the initial time derivative of temperature in the tissue in kelvins per second

4.2. SAR Measurement Procedure

Step 1: Power Reference Measurement

The Power Reference Measurement and Power Drift Measurement are for monitoring the power drift of the device under test in the batch process. The minimum distance of probe sensors to surface is 2.7mm This distance cannot be smaller than the distance os sensor calibration points to probe tip as `defined in the probe properties,

Step 2: Area Scan

The Area Scan is used as a fast scan in two dimensions to find the area of high field values, before doing a fine measurement around the hot spot. The sophisticated interpolation routines implemented in DASY software can find the maximum locations even in relatively coarse grids. When an Area Scan has measured all reachable points, it computes the field maximal found in the scanned area, within a range of the global maximum. The range (in db) is specified in the standards for compliance testing. For example, a 2db range is required in IEEE Standard 1528 standards, whereby 3db is a requirement when compliance is assessed in accordance with the ARIB standard (Japan) If one Zoom Scan follows the Area Scan, then only the absolute maximum will be taken as reference. For cases where multiple maximum are detected, the number of Zoom Scan has to be increased accordingly.

Area Scan Parameters extracted from KDB 865664 D01 SAR Measurement 100MHz to 6GHz

	≤ 3 GHz	> 3 GHz
Maximum distance from closest measurement point (geometric center of probe sensors) to phantom surface	5 ± 1 mm	$\frac{1}{2} \cdot \delta \cdot \ln(2) \pm 0.5$ mm
Maximum probe angle from probe axis to phantom surface normal at the measurement location	30° ± 1°	20° ± 1°
Maximum area scan spatial resolution: Δx_{Area} , Δy_{Area}	≤ 2 GHz: ≤ 15 mm 2 – 3 GHz: ≤ 12 mm	3 – 4 GHz: ≤ 12 mm 4 – 6 GHz: ≤ 10 mm
	When the x or y dimension of the test device, in the measurement plane orientation, is smaller than the above, the measurement resolution must be ≤ the corresponding x or y dimension of the test device with at least one measurement point on the test device.	

Step 3: Zoom Scan

Zoom Scan are used to assess the peak spatial SAR value within a cubic average volume containing 1g abd 10g of simulated tissue. The Zoom Scan measures points(refer to table below) within a cube whose base faces are centered on the maxima found in a preceding area scan job within the same procedure. When the measurement is done, the Zoom Scan evaluates the averaged SAR for 1g and 10g and displays these values next to the job's label.

Zoom Scan Parameters extracted from KDB865664 d01 SAR Measurement 100MHz to 6GHz

Maximum zoom scan spatial resolution: Δx_{Zoom} , Δy_{Zoom}		≤ 2 GHz: ≤ 8 mm 2 – 3 GHz: ≤ 5 mm*	3 – 4 GHz: ≤ 5 mm* 4 – 6 GHz: ≤ 4 mm*
Maximum zoom scan spatial resolution, normal to phantom surface	uniform grid: $\Delta z_{Zoom}(n)$	≤ 5 mm	3 – 4 GHz: ≤ 4 mm 4 – 5 GHz: ≤ 3 mm 5 – 6 GHz: ≤ 2 mm
	graded grid	$\Delta z_{Zoom}(1)$: between 1 st two points closest to phantom surface	≤ 4 mm
		$\Delta z_{Zoom}(n>1)$: between subsequent points	$\leq 1.5 \cdot \Delta z_{Zoom}(n-1)$
Minimum zoom scan volume	x, y, z	≥ 30 mm	3 – 4 GHz: ≥ 28 mm 4 – 5 GHz: ≥ 25 mm 5 – 6 GHz: ≥ 22 mm
<p>Note: δ is the penetration depth of a plane-wave at normal incidence to the tissue medium; see draft standard IEEE P1528-2011 for details.</p> <p>* When zoom scan is required and the <i>reported</i> SAR from the <i>area scan based I-g SAR estimation</i> procedures of KDB 447498 is ≤ 1.4 W/kg, ≤ 8 mm, ≤ 7 mm and ≤ 5 mm zoom scan resolution may be applied, respectively, for 2 GHz to 3 GHz, 3 GHz to 4 GHz and 4 GHz to 6 GHz.</p>			

Step 4: Power Drift Measurement

The Power Drift Measurement measures the field at the same location as the most recent power reference measurement within the same procedure, and with the same settings. The Power Drift Measurement gives the field difference in dB from the reading conducted within the same settings. This allows a user to monitor the power drift of the device under test within a batch process. The measurement procedure is the same as Step 1.

5. TISSUE SIMULATING LIQUID

For SAR measurement of the field distribution inside the phantom, the phantom must be filled with homogeneous tissue simulating liquid to a depth of at least 15cm. For head SAR testing the liquid height from the ear reference point (ERP) of the phantom to the liquid top surface is larger than 15cm For body SAR testing, the liquid height from the center of the flat phantom to the liquid top surface is larger than 15cm. The nominal dielectric values of the tissue simulating liquids in the phantom and the tolerance of 5% are listed in 5.2

5.1. The composition of the tissue simulating liquid

Ingredient (% Weight) Frequency (MHz)	Water	Nacl	Sugar	HEC	Bactericide	DGBE	1,2 Propanediol	Triton X-100
2450 Head	71.88	0.16	0.0	0.0	0.0	7.99	0.0	19.97
2450 Body	70	1	0.0	0.0	0.0	9	0.0	20

5.2. Tissue Dielectric Parameters for Head and Body Phantoms

The head tissue dielectric parameters recommended by the IEEE 1528 have been incorporated in the following table. These head parameters are derived from planar layer models simulating the highest expected SAR for the dielectric properties and tissue thickness variations in a human head. Other head and body tissue parameters that have not been specified in IEEE 1528 are derived from the tissue dielectric parameters computed from the 4-Cole-Cole equations described in Reference [12] and extrapolated according to the head parameters specified in IEEE 1528.

Target Frequency (MHz)	head		body	
	ϵ_r	σ (S/m)	ϵ_r	σ (S/m)
300	45.3	0.87	58.2	0.92
450	43.5	0.87	56.7	0.94
835	41.5	0.90	55.2	0.97
900	41.5	0.97	55.0	1.05
915	41.5	1.01	55.0	1.06
1450	40.5	1.20	54.0	1.30
1610	40.3	1.29	53.8	1.40
1800 – 2000	40.0	1.40	53.3	1.52
2450	39.2	1.80	52.7	1.95
3000	38.5	2.40	52.0	2.73
5800	35.3	5.27	48.2	6.00

(ϵ_r = relative permittivity, σ = conductivity and $\rho = 1000$ kg/m³)

5.3. Tissue Calibration Result

The dielectric parameters of the liquids were verified prior to the SAR evaluation using DASY5 Dielectric Probe Kit and R&S Network Analyzer ZVL6.

Tissue Stimulant Measurement for 2450MHz					
	Fr. (MHz)	Dielectric Parameters ($\pm 5\%$)		Tissue Temp [°C]	Test time
		ϵ_r 39.2(37.24-41.16)	δ [s/m]1.80(1.71-1.89)		
Head	2402	40.26	1.75	21.1	Jan. 18,2017
	2441	39.67	1.79		
	2450	39.10	1.83		
	2480	38.52	1.85		
	Fr. (MHz)	Dielectric Parameters ($\pm 5\%$)		Tissue Temp [°C]	Test time
		ϵ_r 52.7(50.065-55.335)	δ [s/m]1.95(1.8525-2.0475)		
Body	2402	54.88	1.87	21.0	Jan. 20,2017
	2441	54.10	1.89		
	2450	53.37	1.91		
	2480	52.25	1.92		

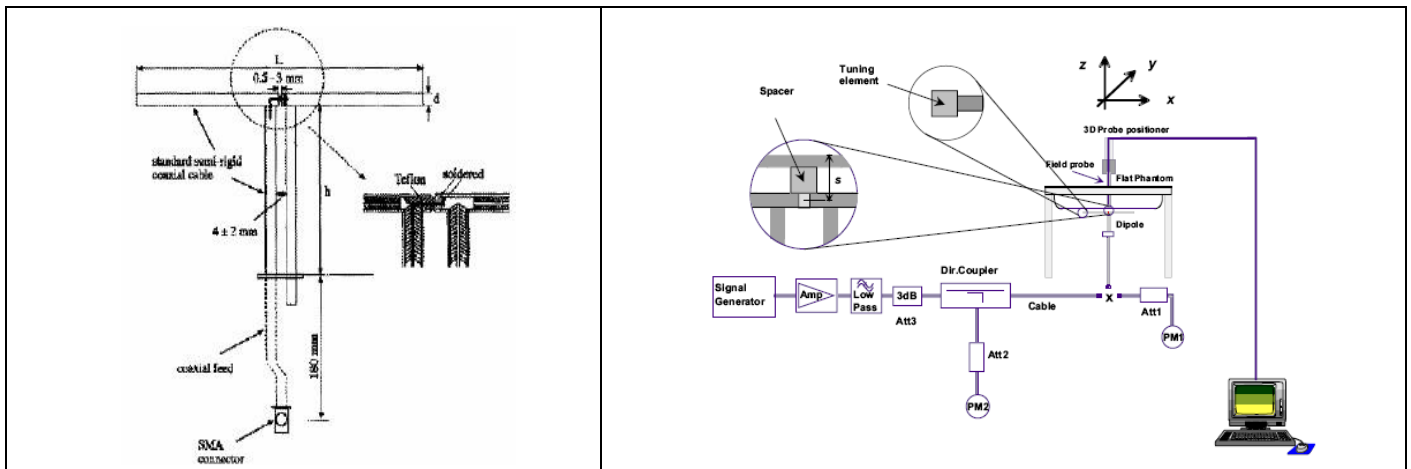
6. SAR SYSTEM CHECK PROCEDURE

6.1. SAR System Check Procedures

SAR system check is required to confirm measurement accuracy, according to the tissue dielectric media, probe calibration points and other system operating parameters required for measuring the SAR of a test device. The system verification must be performed for each frequency band and within the valid range of each probe calibration point required for testing the device. The same SAR probe(s) and tissue-equivalent media combinations used with each specific SAR system for system verification must be used for device testing. When multiple probe calibration points are required to cover substantially large transmission bands, independent system verifications are required for each probe calibration point. A system verification must be performed before each series of SAR measurements using the same probe calibration point and tissue-equivalent medium. Additional system verification should be considered according to the conditions of the tissue-equivalent medium and measured tissue dielectric parameters, typically every three to four days when the liquid parameters are remeasured or sooner when marginal liquid parameters are used at the beginning of a series of measurements.

Each DASY system is equipped with one or more system check kits. These units, together with the predefined measurement procedures within the DASY software, enable the user to conduct the system check and system validation. System kit includes a dipole, and dipole device holder.

The system check verifies that the system operates within its specifications. It's performed daily or before every SAR measurement. The system check uses normal SAR measurement in the flat section of the phantom with a matched dipole at a specified distance. The system check setup is shown as below.



6.2. SAR System Check

6.2.1. Dipoles



The dipoles used is based on the IEEE-1528 standard, and is complied with mechanical and electrical specifications in line with the requirements of IEEE. the table below provides details for the mechanical and electrical Specifications for the dipoles.

Frequency	L (mm)	h (mm)	d (mm)
2450MHz	51.5	30.4	3.6

6.2.2. System Check Result

System Performance Check at 2450MHz for head								
Validation Kit: D2450V2-SN:968								
Frequency [MHz]	Target Value(W/Kg)		Reference Result ($\pm 10\%$)		Tested Value(W/Kg)		Tissue Temp. [°C]	Test time
	1g	10g	1g	10g	1g	10g		
2450	53.8	25.4	48.42-59.18	22.86-27.94	51.351	24.249	21.1	Jan. 18,2017
System Performance Check at 2450MHz for Body								
Frequency [MHz]	Target Value(W/Kg)		Reference Result ($\pm 10\%$)		Tested Value(W/Kg)		Tissue Temp. [°C]	Test time
	1g	10g	1g	10g	1g	10g		
2450	51.7	24.3	46.53-56.87	21.87-26.73	47.864	22.981	21.0	Jan. 20,2017

Note:

- (1) We use a CW signal of 18dBm for system check, and then all SAR value are normalized to 1W forward power. The result must be within $\pm 10\%$ of target value.

7. SAR EXPOSURE LIMITS

SAR assessments have been made in line with the requirements of IEEE-1528, and comply with ANSI/IEEE C95.1-2005 “Uncontrolled Environments” limits. These limits apply to a location which is deemed as “Uncontrolled Environment” which can be described as a situation where the general public may be exposed to an RF source with no prior knowledge or control over their exposure.

Limits for General Population/Uncontrolled Exposure (W/kg)

Type Exposure	Uncontrolled Environment Limit (W/kg)
Spatial Peak SAR (1g cube tissue for brain or body)	1.60
Spatial Average SAR (Whole body)	0.08
Spatial Peak SAR (Limbs)	4.0

8. TEST EQUIPMENT LIST

Equipment description	Manufacturer/ Model	Identification No.	Current calibration date	Next calibration date
Stäubli Robot	Stäubli-TX60	F13/5Q2UD1/A/01	N/A	N/A
Robot Controller	Stäubli-CS8	139522	N/A	N/A
TISSUE Probe	SATIMO	SN 45/11 OCPG45	11/30/2016	11/29/2017
E-Field Probe	Speag- ES3DV3	SN:3337	09/28/2016	09/27/2017
EL4 Phantom	ELI V5.0	1210	N/A	N/A
Device Holder	Speag-SD 000 H01 KA	SD 000 H01 KA	N/A	N/A
DAE4	Speag-SD 000 D04 BM	1398	02/02/2016	02/01/2017
SAR Software	Speag-DASY5	DASY52.8	N/A	N/A
Liquid	SATIMO	-	N/A	N/A
Dipole	D2450V2	SN968	06/12/2015	06/11/2018
Signal Generator	Agilent-E4438C	US41461365	02/29/2016	02/28/2017
Vector Analyzer	Agilent / E4440A	US40420298	07/02/2016	07/01/2017
Network Analyzer	Rhode & Schwarz ZVL6	SN100132	03/04/2016	03/03/2017
Attenuator	Warison /WATT-6SR1211	N/A	N/A	N/A
Attenuator	Mini-circuits / VAT-10+	N/A	N/A	N/A
Amplifier	EM30180	SN060552	03/04/2016	03/03/2017
Directional Couple	Werlatone/ C5571-10	SN99463	07/02/2016	07/01/2017
Directional Couple	Werlatone/ C6026-10	SN99482	07/02/2016	07/01/2017
Power Sensor	NRP-Z21	1137.6000.02	10/10/2016	10/09/2017
Power Sensor	NRP-Z23	US38261498	03/01/2016	02/28/2017
Power Viewer	R&S	V2.3.1.0	N/A	N/A

Note: Per KDB 865664 Dipole SAR Validation, AGC Lab has adopted 3 years calibration intervals. On annual basis, every measurement dipole has been evaluated and is in compliance with the following criteria:

1. There is no physical damage on the dipole;
2. System validation with specific dipole is within 10% of calibrated value;
3. Return-loss is within 20% of calibrated measurement;
4. Impedance is within 5Ω of calibrated measurement.

9. MEASUREMENT UNCERTAINTY

The component of uncertainty may generally be categorized according to the methods used to evaluate them. The evaluation of uncertainty by the statistical analysis of a series of observations is termed a Type A evaluation of uncertainty. The evaluation of uncertainty by means other than the statistical analysis of a series of observation is termed a Type B evaluation of uncertainty. Each component of uncertainty, however evaluated, is represented by an estimated standard deviation, termed standard uncertainty, which is determined by the positive square root of the estimated variance.

A Type A evaluation of standard uncertainty may be based on any valid statistical method for treating data. This includes calculating the standard deviation of the mean of a series of independent observations; using the method of least squares to fit a curve to the data in order to estimate the parameter of the curve and their standard deviations; or carrying out an analysis of variance in order to identify and quantify random effects in certain kinds of measurement.

A type B evaluation of standard uncertainty is typically based on scientific judgment using all of the relevant information available. These may include previous measurement data, experience, and knowledge of the behavior and properties of relevant materials and instruments, manufacture’s specification, data provided in calibration reports and uncertainties assigned to reference data taken from handbooks. Broadly speaking, the uncertainty is either obtained from an outdoor source or obtained from an assumed distribution, such as the normal distribution, rectangular or triangular distributions indicated in Table as follow.

Uncertainty Distributions	Normal	Rectangular	Triangular	U-Shape
Multi-plying Factor(a)	1/k(b)	$1/\sqrt{3}$	$1/\sqrt{6}$	$1/\sqrt{2}$

(a) Standard uncertainty is determined as the product of the multiplying factor and the estimated range of variations in the measured quantity

(b) κ is the coverage factor

Table 13.1 Standard Uncertainty for Assumed Distribution (above table)

The combined standard uncertainty of the measurement result represents the estimated standard deviation of the result. It is obtained by combining the individual standard uncertainties of both Type A and Type B evaluation using the usual “root-sum-squares” (RSS) methods of combining standard deviations by taking the positive square root of the estimated variances.

Expanded uncertainty is a measure of uncertainty that defines an interval about the measurement result within which the measured value is confidently believed to lie. It is obtained by multiplying the combined standard uncertainty by a coverage factor. Typically, the coverage factor ranges from 2 to 3. Using a coverage factor allows the true value of a measured quantity to be specified with a defined probability within the specified uncertainty range. For purpose of this document, a coverage factor two is used, which corresponds to confidence interval of about 95 %. The DASY uncertainty Budget is shown in the following tables.

DASY5 Uncertainty									
Measurement uncertainty for 150 MHz to 3GHz averaged over 1 gram / 10 gram.									
Uncertainty Component	Sec.	Tol (+- %)	Prob. Dist.	Div.	Ci (1g)	Ci (10g)	1g Ui (+-%)	10g Ui (+-%)	Vi
Measurement System									
Probe calibration	E.2.1	6.65	N	1	1	1	6.65	6.65	∞
Axial Isotropy	E.2.2	0.25	R	$\sqrt{3}$	1	1	0.14	0.14	∞
Hemispherical Isotropy	E.2.2	1.3	R	$\sqrt{3}$	1	1	0.75	0.75	∞
Linearity	E.2.4	0.3	R	$\sqrt{3}$	1	1	0.17	0.17	∞
Probe modulation	E.2.5	1.65	R	$\sqrt{3}$	1	1	0.95	0.95	∞
Detection limits	E.2.4	0.9	R	$\sqrt{3}$	1	1	0.52	0.52	∞
Boundary effect	E.2.3	0.9	R	$\sqrt{3}$	1	1	0.52	0.52	∞
Readout Electronics	E.2.6	0.2	N	1	1	1	0.20	0.20	∞
Response Time	E.2.7	0.0	R	$\sqrt{3}$	1	1	0.00	0.00	∞
Integration Time	E.2.8	0.0	R	$\sqrt{3}$	1	1	0.00	0.00	∞
RF ambient Conditions-noise	E.6.1	0.9	R	$\sqrt{3}$	1	1	0.52	0.52	∞
RF ambient Conditions-reflections	E.6.1	0.9	R	$\sqrt{3}$	1	1	0.52	0.52	∞
Probe positioned mech. restrictions	E.6.2	0.7	R	$\sqrt{3}$	1	1	0.40	0.40	∞
Probe positioning with respect to phantom shell	E.6.3	6.5	R	$\sqrt{3}$	1	1	3.75	3.75	∞
Post-processing	E.5	3.8	R	$\sqrt{3}$	1	1	2.19	2.19	∞
Test sample related									
Device holder uncertainty	E.4.1	3.6	N	1	1	1	3.60	3.60	M-1
Test sample positioning	E.4.2	3.2	N	1	1	1	3.20	3.20	M-1
SAR scaling	E.6.5	0	R	$\sqrt{3}$	1	1	0.00	0.00	∞
Drift of output power(measured SAR drift)	E.2.9	5.0	R	$\sqrt{3}$	1	1	2.89	2.89	∞
Phantom and set-up									
Phantom Uncertainty (Shape and thickness tolerances)	E.3.1	0.05	R	$\sqrt{3}$	1	1	0.03	0.03	∞
Algorithm for correcting SAR for deviations in permittivity and conductivity	E.3.2	1.9	N	1	1	0.84	1.90	1.60	∞
Liquid conductivity (meas.)	E.3.3	5	N	1	0.78	0.71	3.90	3.55	M-1
Liquid permittivity (meas.)	E.3.3	5	N	1	0.23	0.26	1.15	1.30	M
Liquid permittivity – temperature uncertainty	E.3.4	5	R	$\sqrt{3}$	0.78	0.71	2.25	2.05	∞
Liquid conductivity – temperature uncertainty	E.3.4	5	R	$\sqrt{3}$	0.23	0.26	0.66	0.75	∞
Combined Standard Uncertainty			RSS				10.65	10.39	
Expanded Uncertainty (95% Confidence interval)			k				21.30	20.78	

System validation for 150 MHz to 3GHz averaged over 1 gram / 10 gram.									
Uncertainty Component	Sec.	Tol (+-%)	Prob. Dist.	Div.	Ci (1g)	Ci (10g)	1g Ui (+-%)	10g Ui (+-%)	Vi
Measurement System									
Probe calibration	E.2.1	6.65	N	1	1	1	6.65	6.65	∞
Axial Isotropy	E.2.2	0.25	R	$\sqrt{3}$	1	1	0.14	0.14	∞
Hemispherical Isotropy	E.2.2	1.3	R	$\sqrt{3}$	1	1	0.75	0.75	
Linearity	E.2.4	0.3	R	$\sqrt{3}$	1	1	0.17	0.17	∞
Probe modulation	E.2.5	1.65	R	$\sqrt{3}$	1	1	0.95	0.95	∞
Detection limits	E.2.4	0.9	R	$\sqrt{3}$	1	1	0.52	0.52	∞
Boundary effect	E.2.3	0.9	R	$\sqrt{3}$	1	1	0.52	0.52	∞
Readout Electronics	E.2.6	0.2	N	1	1	1	0.20	0.20	∞
Response Time	E.2.7	0.0	R	$\sqrt{3}$	1	1	0.00	0.00	∞
Integration Time	E.2.8	0.0	R	$\sqrt{3}$	1	1	0.00	0.00	∞
RF ambient Conditions-noise	E.6.1	0.9	R	$\sqrt{3}$	1	1	0.52	0.52	∞
RF ambient Conditions-reflections	E.6.1	0.9	R	$\sqrt{3}$	1	1	0.52	0.52	∞
Probe positioned mech. restrictions	E.6.1	0.7	R	$\sqrt{3}$	1	1	0.40	0.40	∞
Probe positioning with respect to phantom shell	E.6.2	6.5	R	$\sqrt{3}$	1	1	3.75	3.75	∞
Post-processing	E.6.3	3.8	R	$\sqrt{3}$	1	1	2.19	2.19	∞
System validation source(dipole)									
Deviation of the experimental source from numerical source	E6.4	5.3	N	1	1	1	5.30	5.30	∞
Source to liquid distance	8,E.6.6	1.0	R	$\sqrt{3}$	1	1	0.58	0.58	∞
Drift of output power(measured SAR drift)	8,6.6.4	5.0	R	$\sqrt{3}$	1	1	2.89	2.89	∞
Phantom and set-up									
Phantom Uncertainty (Shape and thickness tolerances)	E.3.1	0.05	R	$\sqrt{3}$	1	1	0.03	0.03	∞
Algorithm for correcting SAR for deviations in permittivity and conductivity	E.3.2	1.9	N	1	1	0.84	1.90	1.60	∞
Liquid conductivity (meas.)	E.3.3	5	N	1	0.78	0.71	3.90	3.55	M
Liquid permittivity (meas.)	E.3.3	5	N	1	0.23	0.26	1.15	1.30	M
Liquid permittivity – temperature uncertainty	E.3.4	5	R	$\sqrt{3}$	0.78	0.71	2.25	2.05	∞
Liquid conductivity – temperature uncertainty	E.3.4	5	R	$\sqrt{3}$	0.23	0.26	0.66	0.75	∞
Combined Standard Uncertainty			RSS				10.90	10.635	
Expanded Uncertainty (95% Confidence interval)			k				21.79	21.270	

System check for 150 MHz to 3GHz averaged over 1 gram / 10 gram.									
Uncertainty Component	Sec.	Tol (+-%)	Prob. Dist.	Div.	Ci (1g)	Ci (10g)	1g Ui (+-%)	10g Ui (+-%)	Vi
Measurement System									
Probe calibration drift	E.2.1.3	2.0	N	1	1	1	6.00	6.00	∞
Axial Isotropy	E.2.2	0.25	R	$\sqrt{3}$	0	0	0	0	∞
Hemispherical Isotropy	E.2.2	1.3	R	$\sqrt{3}$	0	0	0	0	
Linearity	E.2.4	0.3	R	$\sqrt{3}$	0	0	0	0	∞
Probe modulation	E.2.5	1.65	R	$\sqrt{3}$	0	0	0	0	∞
Detection limits	E.2.4	0.9	R	$\sqrt{3}$	0	0	0	0	∞
Boundary effect	E.2.3	0.9	R	$\sqrt{3}$	0	0	0	0	∞
Readout Electronics	E.2.6	0.2	N	1	0	0	0	0	∞
Response Time	E.2.7	0	R	$\sqrt{3}$	0	0	0	0	∞
Integration Time	E.2.8	0	R	$\sqrt{3}$	0	0	0	0	∞
RF ambient Conditions-noise	E.6.1	0.9	R	$\sqrt{3}$	0	0	0	0	∞
RF ambient Conditions-reflections	E.6.1	0.9	R	$\sqrt{3}$	0	0	0	0	∞
Probe positioned mech. restrictions	E.6.2	0.7	R	$\sqrt{3}$	1	1	0.40	0.40	∞
Probe positioning with respect to phantom shell	E.6.3	6.5	R	$\sqrt{3}$	1	1	3.75	3.75	∞
Post-processing	E.5	3.8	R	$\sqrt{3}$	0	0	0	0	∞
System check source(dipole)									
Deviation of the experimental source from numerical source	E6.4	5.3	N	1	1	1	5.30	5.30	∞
Source to liquid distance	8,E.6.6	1.0	R	$\sqrt{3}$	1	1	0.58	0.58	∞
Drift of output power(measured SAR drift)	8,6.6.4	5.0	R	$\sqrt{3}$	1	1	2.89	2.89	∞
Phantom and set-up									
Phantom Uncertainty (Shape and thickness tolerances)	E.3.1	0.05	R	$\sqrt{3}$	1	1	0.03	0.03	∞
Algorithm for correcting SAR for deviations in permittivity and conductivity	E.3.2	1.9	N	1	1	0.84	1.90	1.60	∞
Liquid conductivity (meas.)	E.3.3	5	N	1	0.78	0.71	3.90	3.55	M
Liquid permittivity (meas.)	E.3.3	5	N	1	0.23	0.26	1.15	1.30	M
Liquid permittivity – temperature uncertainty	E.3.4	5	R	$\sqrt{3}$	0.78	0.71	2.25	2.05	∞
Liquid conductivity – temperature uncertainty	E.3.4	5	R	$\sqrt{3}$	0.23	0.26	0.66	0.75	∞
Combined Standard Uncertainty			RSS				8.11	7.86	
Expanded Uncertainty (95% Confidence interval)			k				16.22	15.52	

10. CONDUCTED POWER MEASUREMENT

Bluetooth_BR/EDR

Modulation	Channel	Frequency(MHz)	Maximum Peak Power (dBm)
DH1 (GFSK)	0	2402	20.15
	39	2441	20.86
	78	2480	20.65
2DH3 ($\pi/4$ -DQPSK)	0	2402	19.70
	39	2441	20.07
	78	2480	20.08
3DH5 (8-DPSK)	0	2402	19.64
	39	2441	20.19
	78	2480	20.14

Bluetooth_BLE

Modulation	Channel	Frequency(MHz)	Maximum Peak Power (dBm)
GFSK	0	2402	8.92
	39	2441	9.52
	78	2480	9.16

11. TEST RESULTS

11.1. SAR Test Results Summary

11.1.1. Test position and configuration

1. The EUT is a model of Bluetooth headset
2. A non-standard setup was used for SAR testing based on guidance from the FCC. The operational description contains additional information;

According to KDB 447498 D01 General RF Exposure Guidance v06, due to the Max peak power for Bluetooth is more than the test exclusion threshold, which have to be tested
3. And a PAG procedure is request; The Response(No.:215316) on 01/19/2017 is :
 - (1). Using the Flat phantom for testing .
 - (2). Using Head liquid with a test separation distance of 0mm to test 1-g head SAR. .
 - (3). Using Body liquid with a test separation distance of 0mm to test 1-g body SAR and 10-g body extremity SAR.

FCC response on 01/19/2017

Thank you for your inquiry.

Due to the form factor of the device, antenna location, operating configurations, and its usage, we recommend to do the following tests.

1. 1-g head SAR test at 0 mm.
2. 1-g body SAR test at 0 mm
3. 10-g body extremity SAR test 0 mm

For further guidance please, refer to 447498 D01- General RF Exposure Guidance v06.

4. For SAR testing, the device was controlled by software to test at reference fixed frequency

11.1.2. Operation Mode

1. Per KDB 447498 D01 v06 ,for each exposure position, if the highest 1-g SAR is ≤ 0.8 W/kg, testing for low and high channel is optional.
2. Per KDB 865664 D01 v01r04,for each frequency band, if the measured SAR is ≥ 0.8 W/Kg, testing for repeated SAR measurement is required , that the highest measured SAR is only to be tested. When the SAR results are near the limit, the following procedures are required for each device to verify these types of SAR measurement related variation concerns by repeating the highest measured SAR configuration in each frequency band.
 - (1) When the original highest measured SAR is ≥ 0.8 W/Kg, repeat that measurement once.
 - (2) Perform a second repeated measurement only if the ratio of largest to smallest SAR for the original and first repeated measurements is >1.20 or when the original or repeated measurement is ≥ 1.45 W/Kg.
 - (3) Perform a third repeated measurement only if the original, first and second repeated measurement is ≥ 1.5 W/Kg and ratio of largest to smallest SAR for the original, first and second measurement is ≥ 1.20 .
3. Maximum Scaling SAR in order to calculate the Maximum SAR values to test under the standard Peak Power, Calculation method is as follows:
Maximum Scaling SAR =tested SAR (Max.) \times [maximum turn-up power (mw)/ maximum measurement output power(mw)]
4. According to KDB 447498 D01, annex A, SAR is not required for bluetooth_BLE because its maximum output power is less than 10 mW.

11.1.3. Test Result

SAR MEASUREMENT									
Depth of Liquid (cm):>15					Relative Humidity (%): 52.3				
Product: Bluetooth headset									
Test Mode: BT(communication)									
Position	Mode	Ch.	Fr. (MHz)	Power Drift (<±0.2)	SAR (1g) (W/kg)	Max. Tune-up Power (dBm)	Meas. output Power (dBm)	Scaled SAR (W/Kg)	Limit (W/kg)
Head SAR back	1DH1	0	2402	-0.16	0.775	21.00	20.15	0.943	1.6
Head SAR back	1DH1	39	2441	-0.04	1.17	21.00	20.86	1.208	1.6
Head SAR back	1DH1	78	2480	-0.03	1.01	21.00	20.65	1.095	1.6
Head SAR back	2DH3	39	2441	-0.11	0.507	21.00	20.07	0.628	1.6
Head SAR back	3DH5	39	2441	-0.08	0.421	21.00	20.19	0.507	1.6
Head SAR front	1DH1	39	2441	-0.02	0.168	21.00	20.86	0.174	1.6

Note:

- When the 1-g Reported SAR is ≤ 0.8 W/kg, testing for low and high channel is optional. Refer to KDB 447498.
- The test separation of all above table is 0mm.

Repeated SAR										
Product: Bluetooth headset										
Test Mode: BT(communication)										
Position	Mode	Ch.	Fr. (MHz)	Power Drift (<±0.2)	Once SAR (1g) (W/kg)	Power Drift (<±0.2)	Twice SAR (1g) (W/kg)	Power Drift (<±0.2)	Third SAR (1g) (W/kg)	Limit (W/kg)
Head SAR Back	1DH1	39	2441	-0.07	1.15	-0.08	1.13	-	-	1.6

SAR MEASUREMENT									
Depth of Liquid (cm):>15					Relative Humidity (%): 53.5				
Product: Bluetooth headset									
Test Mode: BT(communication)									
Position	Mode	Ch.	Fr. (MHz)	Power Drift (<±0.2)	SAR (1g) (W/kg)	Max. Tune-up Power (dBm)	Meas. output Power (dBm)	Scaled SAR (W/Kg)	Limit (W/kg)
Body SAR back	1DH1	0	2402	-0.10	0.660	21.00	20.15	0.803	1.6
Body SAR back	1DH1	39	2441	0.18	0.633	21.00	20.86	0.654	1.6
Body SAR back	1DH1	78	2480	-0.04	0.512	21.00	20.65	0.555	1.6
Body SAR back	2DH3	39	2441	0.11	0.063	21.00	20.07	0.078	1.6
Body SAR back	3DH5	39	2441	0.05	0.103	21.00	20.19	0.124	1.6
Body SAR front	1DH1	39	2441	-0.08	0.216	21.00	20.86	0.223	1.6

Note:

- When the 1-g Reported SAR is ≤ 0.8 W/kg, testing for low and high channel is optional. Refer to KDB 447498.
- The test separation of all above table is 0mm.

SAR MEASUREMENT									
Depth of Liquid (cm):>15					Relative Humidity (%): 53.5				
Product: Bluetooth headset									
Test Mode: BT(communication) - 10-g extremity SAR									
Position	Mode	Ch.	Fr. (MHz)	Power Drift (<±0.2)	SAR (10g) (W/kg)	Max. Tune-up Power (dBm)	Meas. output Power (dBm)	Scaled SAR (W/Kg)	Limit (W/kg)
Body SAR back	1DH1	0	2402	-0.10	0.344	21.00	20.15	0.418	4.0
Body SAR back	1DH1	39	2441	0.18	0.325	21.00	20.86	0.336	4.0
Body SAR back	1DH1	78	2480	-0.04	0.262	21.00	20.65	0.284	4.0
Body SAR back	2DH3	39	2441	0.11	0.037	21.00	20.07	0.046	4.0
Body SAR back	3DH5	39	2441	0.05	0.057	21.00	20.19	0.069	4.0
Body SAR front	1DH1	39	2441	-0.08	0.118	21.00	20.86	0.122	4.0

APPENDIX A. SAR SYSTEM CHECK DATA

Test Laboratory: AGC Lab
System Check Head 2450 MHz
DUT: Dipole 2450 MHz Type: SID 2450

Date: Jan. 18,2017

Communication System: CW; Communication System Band: D2450 (2450.0 MHz); Duty Cycle: 1:1;
Frequency: 2450 MHz; Medium parameters used: $f = 2450$ MHz; $\sigma = 1.83$ mho/m; $\epsilon_r = 39.10$; $\rho = 1000$ kg/m³ ;
Phantom section: Flat Section; Input Power=18dBm
Ambient temperature (°C): 21.9, Liquid temperature (°C): 21.1

DASY Configuration:

- Probe: ES3DV3 – SN3337; ConvF(4.83, 4.83, 4.83); Calibrated:09/28/2016
- Sensor-Surface: 3mm (Mechanical Surface Detection), $z = 1.0, 31.0$
- Electronics: DAE4 Sn1398; Calibrated: 02/02/2016
- Phantom: ELI v5.0; Type: QDOVA002AA; Serial: TP:1210;
- DASY52 52.8.7(1137); SEMCAD X 14.6.10(7164)

Configuration/ System Check Head 2450MHz/Area Scan (7x12x1): Measurement grid: $dx=10$ mm, $dy=10$ mm
Maximum value of SAR (measured) = 3.65 W/kg

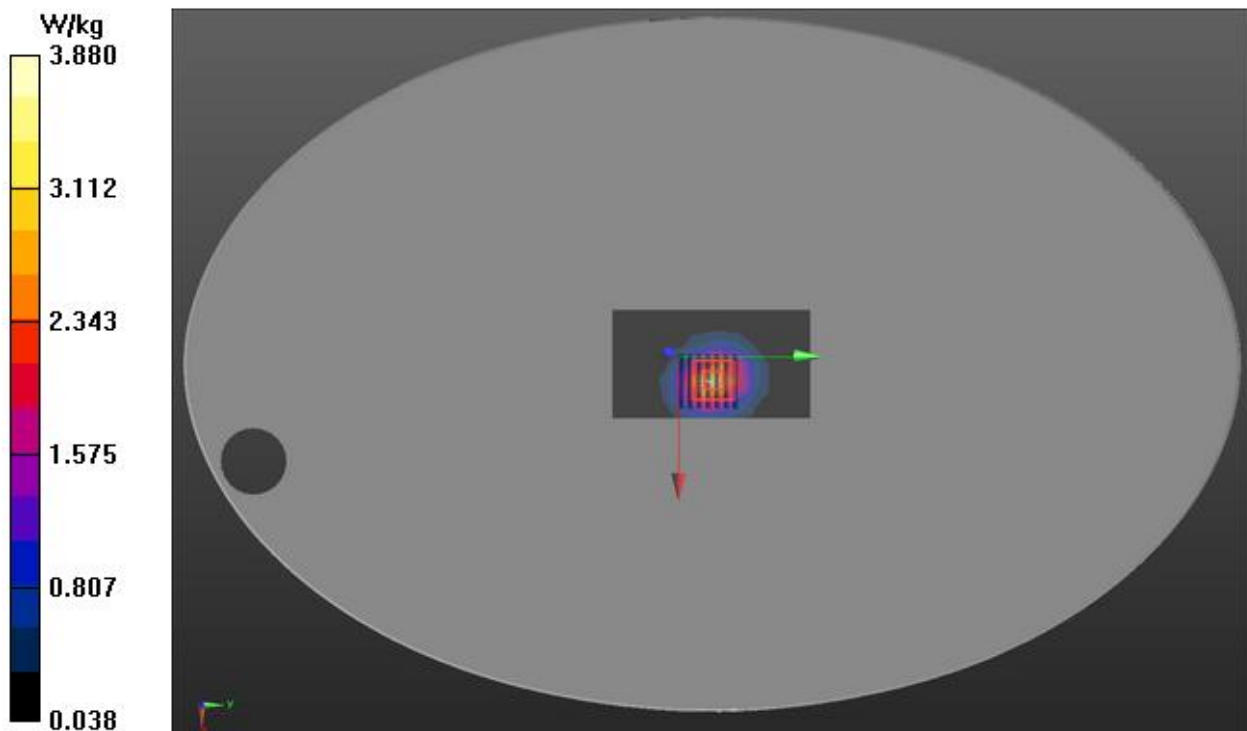
Configuration/ System Check Head 2450MHz/Zoom Scan (7x7x7)/Cube 0: Measurement grid: $dx=5$ mm, $dy=5$ mm, $dz=5$ mm

Reference Value = 37.084 V/m; Power Drift = -0.01 dB

Peak SAR (extrapolated) = 6.10 W/kg

SAR(1 g) = 3.24 W/kg; SAR(10 g) = 1.53 W/kg

Maximum value of SAR (measured) = 3.88 W/kg



Test Laboratory: AGC Lab
System Check Body 2450 MHz
DUT: Dipole 2450 MHz Type: SID 2450

Date: Jan. 20,2017

Communication System: CW; Communication System Band: D2450 (2450.0 MHz); Duty Cycle: 1:1;
Frequency: 2450 MHz; Medium parameters used: $f = 2450$ MHz; $\sigma = 1.91$ mho/m; $\epsilon_r = 53.37$; $\rho = 1000$ kg/m³ ;
Phantom section: Flat Section; Input Power=18dBm
Ambient temperature (°C): 21.9, Liquid temperature (°C): 21.0

DASY Configuration:

- Probe: ES3DV3 – SN3337; ConvF(4.63, 4.63, 4.63); Calibrated:09/28/2016
- Sensor-Surface: 3mm (Mechanical Surface Detection), z = 1.0, 31.0
- Electronics: DAE4 Sn1398; Calibrated: 02/02/2016
- Phantom: ELI v5.0; Type: QDOVA002AA; Serial: TP:1210;
- DASY52 52.8.7(1137); SEMCAD X 14.6.10(7164)

Configuration/ System Check Body 2450MHz /Area Scan (7x12x1): Measurement grid: dx=10mm,
dy=10mm

Maximum value of SAR (measured) = 3.63 W/kg

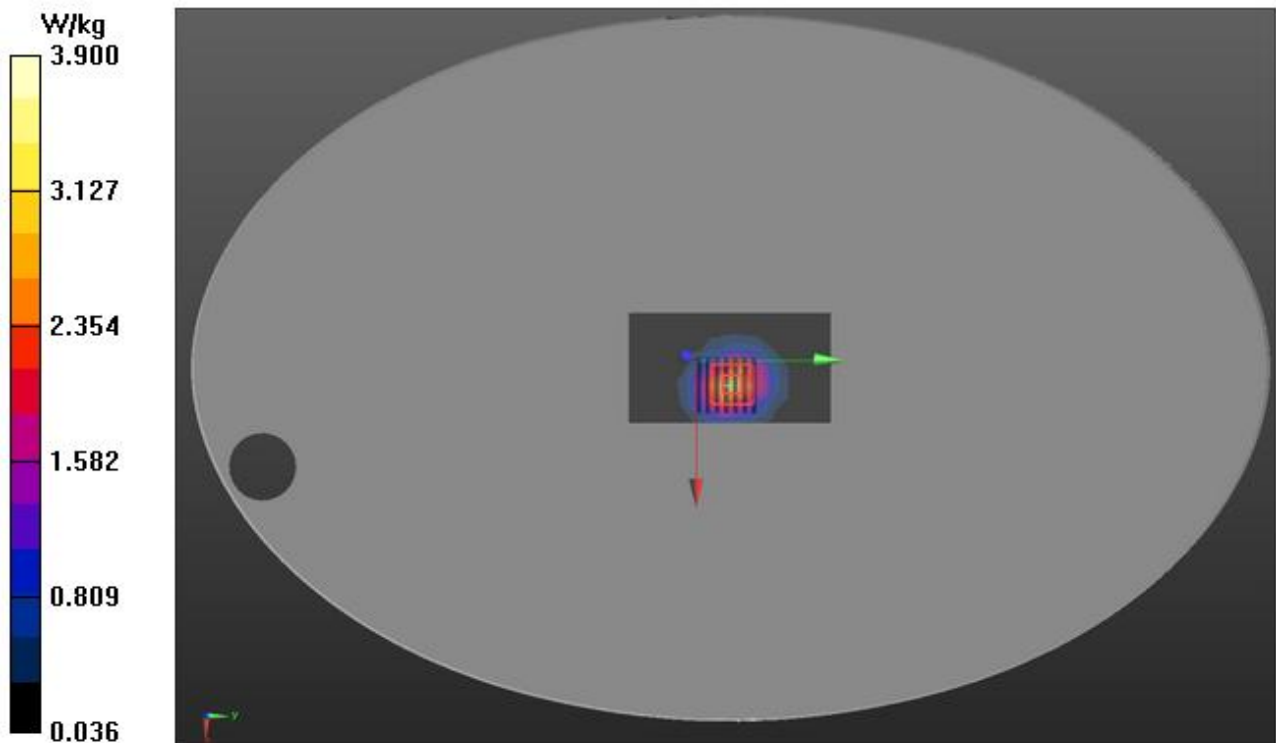
Configuration/ System Check Body 2450MHz /Zoom Scan (7x7x7)/Cube 0: Measurement grid: dx=5mm,
dy=5mm, dz=5mm

Reference Value = 37.282 V/m; Power Drift = -0.07 dB

Peak SAR (extrapolated) = 6.13 W/kg

SAR(1 g) = 3.02 W/kg; SAR(10 g) = 1.45 W/kg

Maximum value of SAR (measured) = 3.90 W/kg



APPENDIX B. SAR MEASUREMENT DATA

Test Laboratory: AGC Lab

Date: Jan. 18,2017

Low- Head SAR-Back(1DH1)

DUT: Bluetooth headset ; Type: AMP PRO

Communication System: 2.4GHz; Communication System Band: 2.4GHz; Duty Cycle:33%;
Frequency: 2402 MHz; Medium parameters used: $f = 2450$ MHz; $\sigma = 1.75$ mho/m; $\epsilon_r = 40.26$; $\rho = 1000$ kg/m³ ;
Phantom section: Flat Section
Ambient temperature (°C): 21.9, Liquid temperature (°C): 21.1

DASY Configuration:

- Probe: ES3DV3 – SN3337; ConvF(4.63, 4.63, 4.63); Calibrated:09/28/2016
- Sensor-Surface: 3mm (Mechanical Surface Detection), $z = 1.0, 31.0$
- Electronics: DAE4 Sn1398; Calibrated: 02/02/2016
- Phantom: ELI v5.0; Type: QDOVA002AA; Serial: TP:1210;
- DASY52 52.8.7(1137); SEMCAD X 14.6.10(7164)

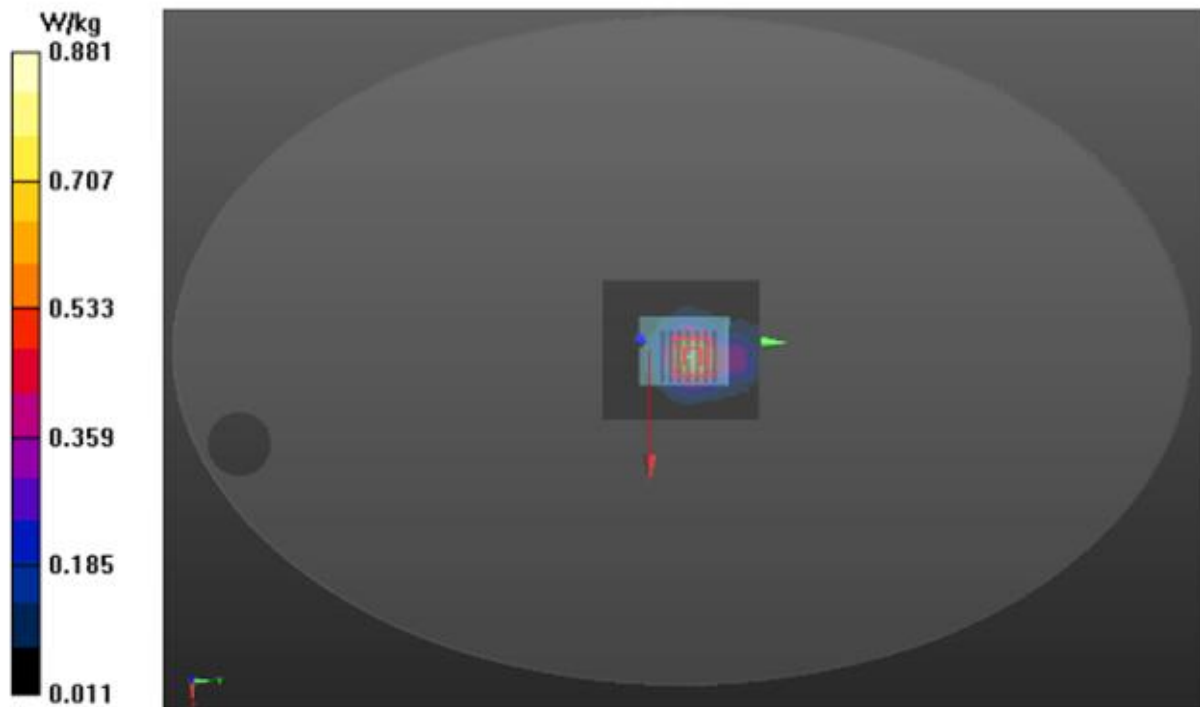
BACK/DH1-L/Area Scan (9x10x1): Measurement grid: $dx=10$ mm, $dy=10$ mm
Maximum value of SAR (measured) = 0.836 W/kg

BACK/DH1-L/Zoom Scan (7x7x7)/Cube 0: Measurement grid: $dx=5$ mm, $dy=5$ mm, $dz=5$ mm
Reference Value = 18.020 V/m; Power Drift = -0.16 dB

Peak SAR (extrapolated) = 1.22 W/kg

SAR(1 g) = 0.775 W/kg; SAR(10 g) = 0.413 W/kg

Maximum value of SAR (measured) = 0.881 W/kg



Test Laboratory: AGC Lab
Mid- Head SAR-Back(1DH1)
DUT: Bluetooth headset ; Type: AMP PRO

Date: Jan. 18,2017

Communication System: 2.4GHz; Communication System Band: 2.4GHz; Duty Cycle:33%;
Frequency: 2441 MHz; Medium parameters used: $f = 2450$ MHz; $\sigma = 1.79$ mho/m; $\epsilon_r = 39.67$; $\rho = 1000$ kg/m³ ;
Phantom section: Flat Section
Ambient temperature (°C): 21.9, Liquid temperature (°C): 21.1

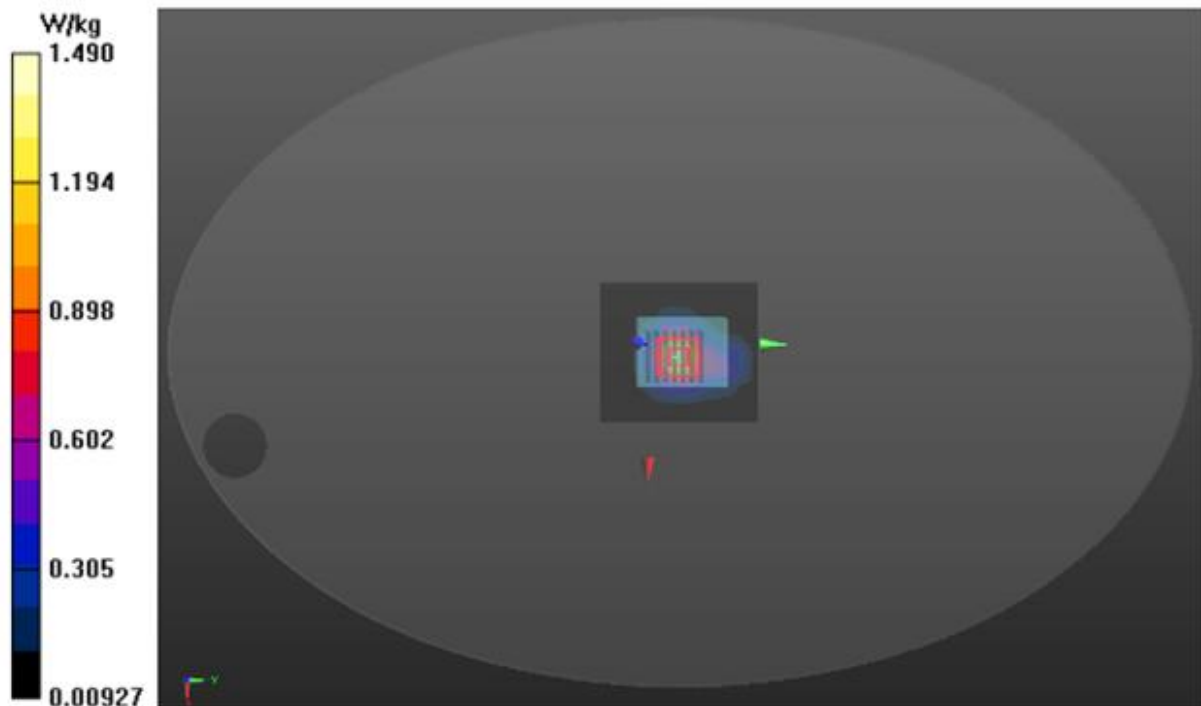
DASY Configuration:

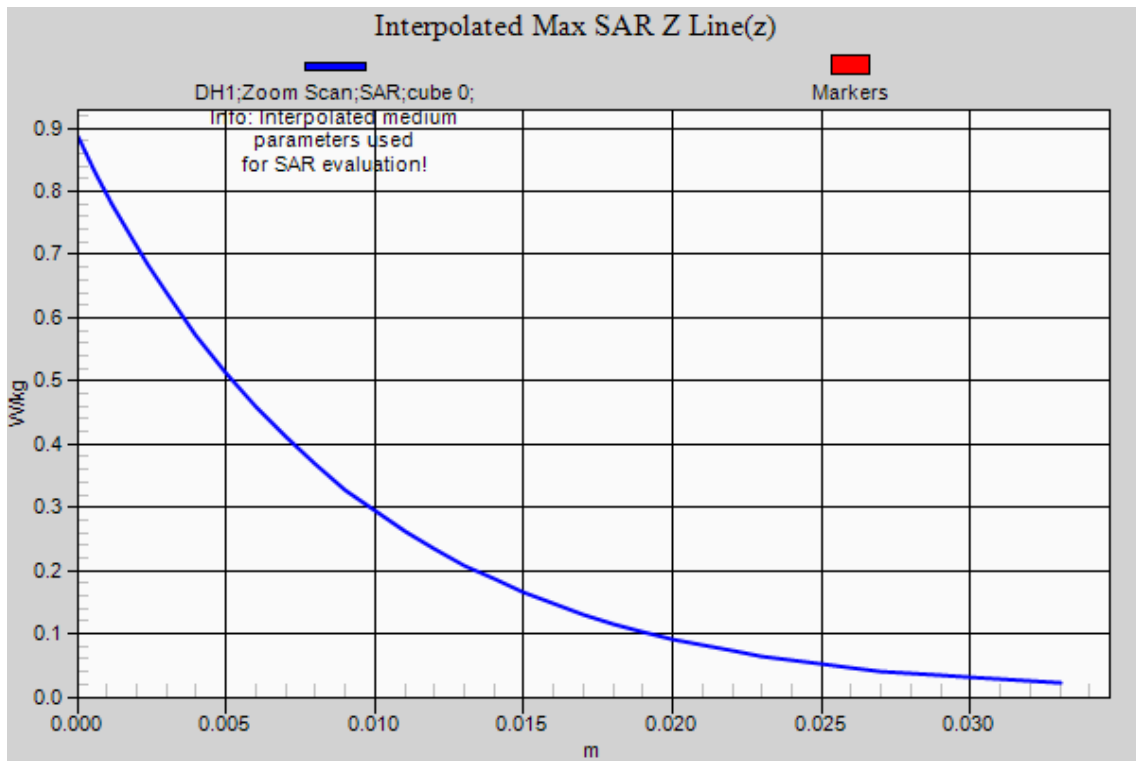
- Probe: ES3DV3 – SN3337; ConvF(4.63, 4.63, 4.63); Calibrated:09/28/2016
- Sensor-Surface: 3mm (Mechanical Surface Detection), z = 1.0, 31.0
- Electronics: DAE4 Sn1398; Calibrated: 02/02/2016
- Phantom: ELI v5.0; Type: QDOVA002AA; Serial: TP:1210;
- DASY52 52.8.7(1137); SEMCAD X 14.6.10(7164)

BACK/DH1/Area Scan (9x10x1): Measurement grid: dx=10mm, dy=10mm
Maximum value of SAR (measured) = 1.42 W/kg

BACK/DH1/Zoom Scan (7x7x7)/Cube 0: Measurement grid: dx=5mm, dy=5mm, dz=5mm
Reference Value = 19.030 V/m; Power Drift = -0.04 dB
Peak SAR (extrapolated) = 2.09 W/kg

SAR(1 g) = 1.17 W/kg; SAR(10 g) = 0.590 W/kg
Maximum value of SAR (measured) = 1.49 W/kg





Test Laboratory: AGC Lab
High- Head SAR-Back(1DH1)
DUT: Bluetooth headset ; Type: AMP PRO

Date: Jan. 18,2017

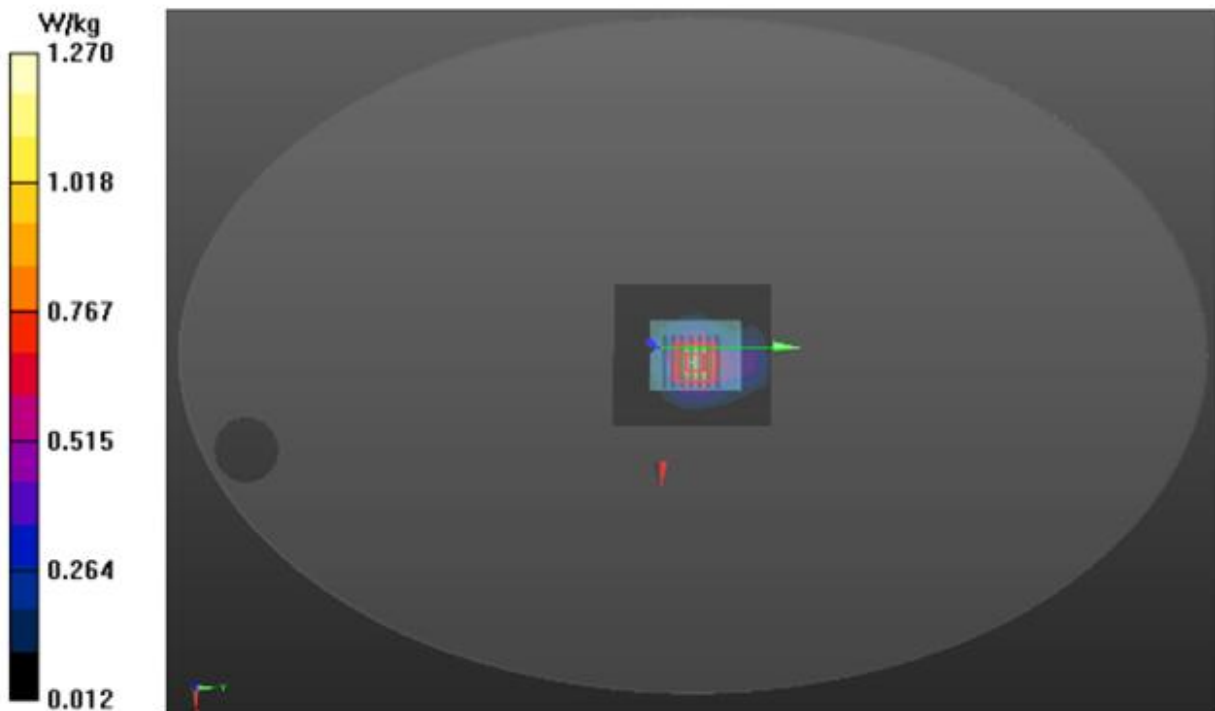
Communication System: 2.4GHz; Communication System Band: 2.4GHz; Duty Cycle:33%;
Frequency: 2480 MHz; Medium parameters used: $f = 2450$ MHz; $\sigma = 1.85$ mho/m; $\epsilon_r = 38.52$; $\rho = 1000$ kg/m³ ;
Phantom section: Flat Section
Ambient temperature (°C): 21.9, Liquid temperature (°C): 21.1

DASY Configuration:

- Probe: ES3DV3 – SN3337; ConvF(4.63, 4.63, 4.63); Calibrated:09/28/2016
- Sensor-Surface: 3mm (Mechanical Surface Detection), z = 1.0, 31.0
- Electronics: DAE4 Sn1398; Calibrated: 02/02/2016
- Phantom: ELI v5.0; Type: QDOVA002AA; Serial: TP:1210;
- DASY52 52.8.7(1137); SEMCAD X 14.6.10(7164)

BACK/DH1-H/Area Scan (9x10x1): Measurement grid: dx=10mm, dy=10mm
Maximum value of SAR (measured) = 1.24 W/kg

BACK/DH1-H/Zoom Scan (7x7x7)/Cube 0: Measurement grid: dx=5mm, dy=5mm, dz=5mm
Reference Value = 23.895 V/m; Power Drift = -0.03 dB
Peak SAR (extrapolated) = 1.77 W/kg
SAR(1 g) = 1.01 W/kg; SAR(10 g) = 0.505 W/kg
Maximum value of SAR (measured) = 1.27 W/kg



Test Laboratory: AGC Lab
Mid- Head SAR-Back(2DH3)
DUT: Bluetooth headset ; Type: AMP PRO

Date: Jan. 18,2017

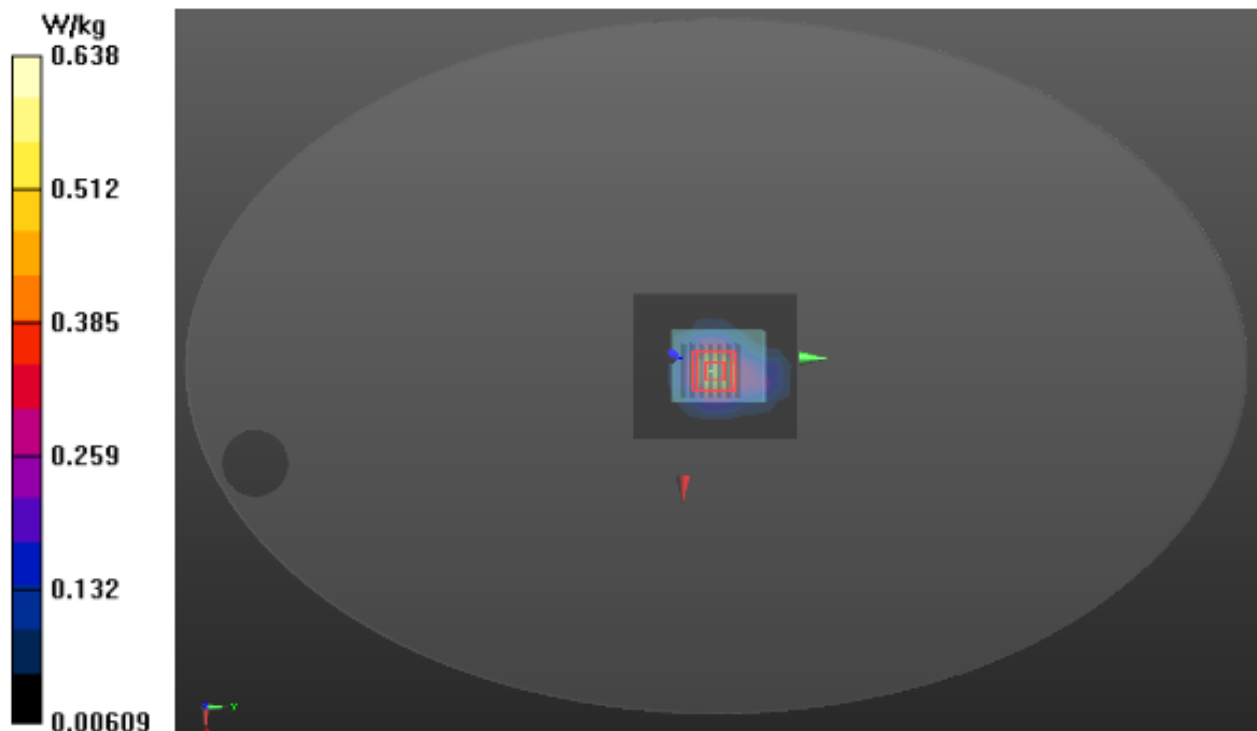
Communication System: 2.4GHz; Communication System Band: 2.4GHz; Duty Cycle:67%;
Frequency: 2441 MHz; Medium parameters used: $f = 2450$ MHz; $\sigma = 1.79$ mho/m; $\epsilon_r = 39.67$; $\rho = 1000$ kg/m³ ;
Phantom section: Flat Section
Ambient temperature (°C): 21.9, Liquid temperature (°C): 21.1

DASY Configuration:

- Probe: ES3DV3 – SN3337; ConvF(4.63, 4.63, 4.63); Calibrated:09/28/2016
- Sensor-Surface: 3mm (Mechanical Surface Detection), z = 1.0, 31.0
- Electronics: DAE4 Sn1398; Calibrated: 02/02/2016
- Phantom: ELI v5.0; Type: QDOVA002AA; Serial: TP:1210; ;
- DASY52 52.8.7(1137); SEMCAD X 14.6.10(7164)

BACK/2DH3/Area Scan (9x10x1): Measurement grid: dx=10mm, dy=10mm
Maximum value of SAR (measured) = 0.562 W/kg

BACK/2D3/Zoom Scan (7x7x7)/Cube 0: Measurement grid: dx=5mm, dy=5mm, dz=5mm
Reference Value = 19.329 V/m; Power Drift = -0.11 dB
Peak SAR (extrapolated) = 0.886 W/kg
SAR(1 g) = 0.507 W/kg; SAR(10 g) = 0.257 W/kg
Maximum value of SAR (measured) = 0.638 W/kg



Test Laboratory: AGC Lab
Mid- Head SAR-Back(3DH5)
DUT: Bluetooth headset ; Type: AMP PRO

Date: Jan. 18,2017

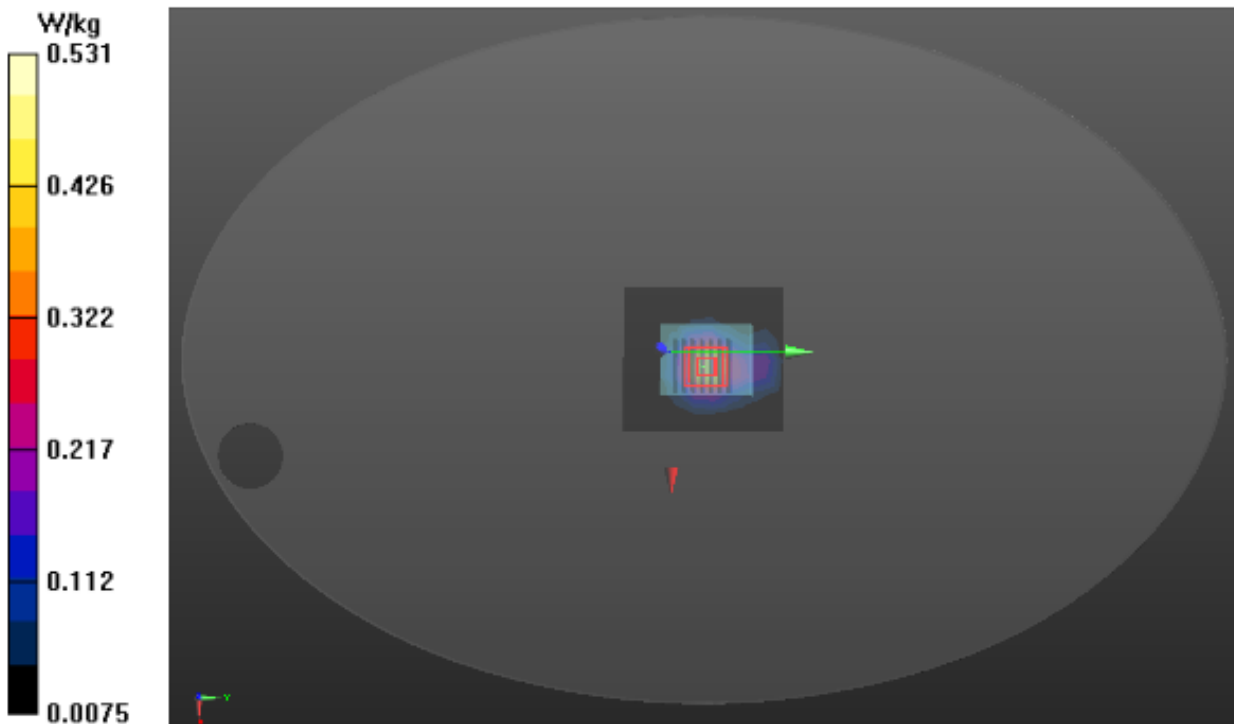
Communication System: 2.4GHz; Communication System Band: 2.4GHz; Duty Cycle: 78%;
Frequency: 2441 MHz; Medium parameters used: $f = 2450$ MHz; $\sigma = 1.79$ mho/m; $\epsilon_r = 39.67$; $\rho = 1000$ kg/m³ ;
Phantom section: Flat Section
Ambient temperature (°C): 21.9, Liquid temperature (°C): 21.1

DASY Configuration:

- Probe: ES3DV3 – SN3337; ConvF(4.63, 4.63, 4.63); Calibrated:09/28/2016
- Sensor-Surface: 3mm (Mechanical Surface Detection), z = 1.0, 31.0
- Electronics: DAE4 Sn1398; Calibrated: 02/02/2016
- Phantom: ELI v5.0; Type: QDOVA002AA; Serial: TP:1210; ;
- DASY52 52.8.7(1137); SEMCAD X 14.6.10(7164)

BACK/3DH5/Area Scan (9x10x1): Measurement grid: dx=10mm, dy=10mm
Maximum value of SAR (measured) = 0.486 W/kg

BACK/3DH5/Zoom Scan (7x7x7)/Cube 0: Measurement grid: dx=5mm, dy=5mm, dz=5mm
Reference Value = 16.775 V/m; Power Drift = -0.08 dB
Peak SAR (extrapolated) = 0.746 W/kg
SAR(1 g) = 0.421 W/kg; SAR(10 g) = 0.211 W/kg
Maximum value of SAR (measured) = 0.531 W/kg



Test Laboratory: AGC Lab
Mid- Head SAR-Front(1DH1)
DUT: Bluetooth headset ; Type: AMP PRO

Date: Jan. 18,2017

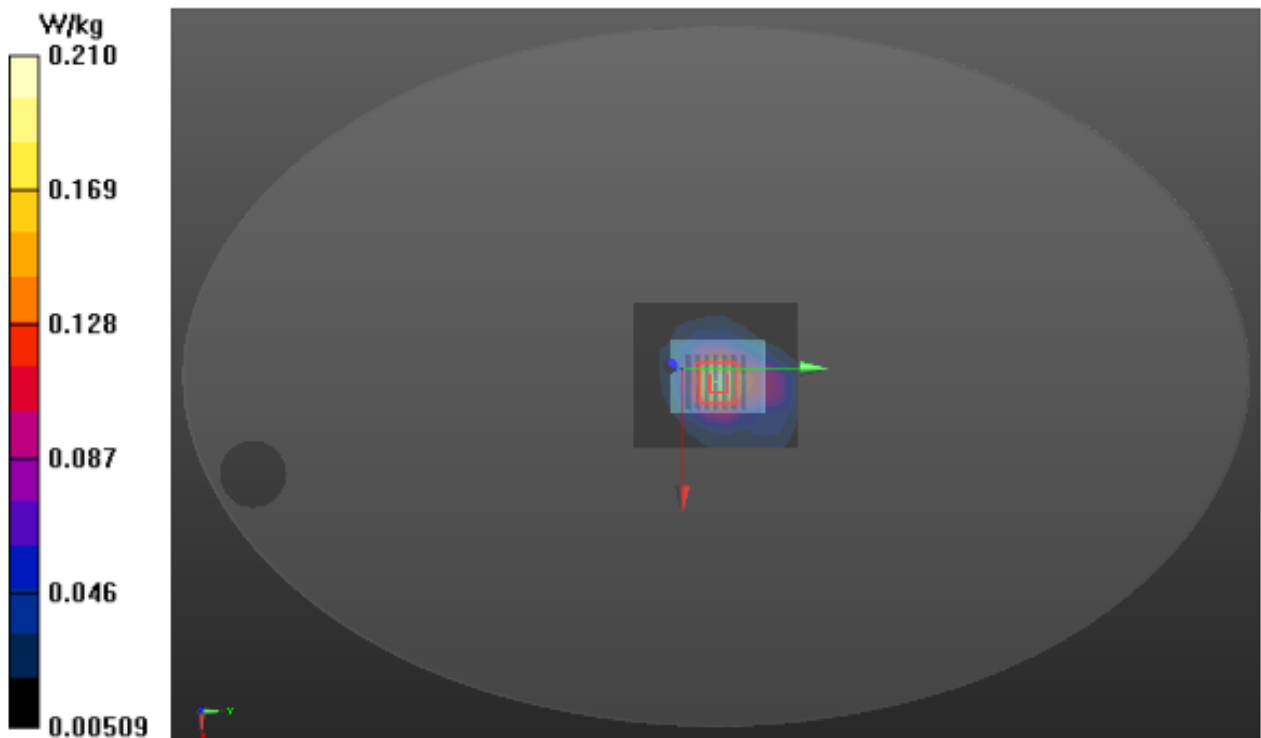
Communication System: 2.4GHz; Communication System Band: 2.4GHz; Duty Cycle:33%;
Frequency: 2441 MHz; Medium parameters used: $f = 2450$ MHz; $\sigma = 1.79$ mho/m; $\epsilon_r = 39.67$; $\rho = 1000$ kg/m³ ;
Phantom section: Flat Section
Ambient temperature (°C): 21.9, Liquid temperature (°C): 21.1

DASY Configuration:

- Probe: ES3DV3 – SN3337; ConvF(4.63, 4.63, 4.63); Calibrated:09/28/2016
- Sensor-Surface: 3mm (Mechanical Surface Detection), z = 1.0, 31.0
- Electronics: DAE4 Sn1398; Calibrated: 02/02/2016
- Phantom: ELI v5.0; Type: QDOVA002AA; Serial: TP:1210;
- DASY52 52.8.7(1137); SEMCAD X 14.6.10(7164)

FRONT /DH1/Area Scan (9x10x1): Measurement grid: dx=10mm, dy=10mm
Maximum value of SAR (measured) = 0.201 W/kg

FRONT /DH1/Zoom Scan (7x7x7)/Cube 0: Measurement grid: dx=5mm, dy=5mm, dz=5mm
Reference Value = 11.182 V/m; Power Drift = -0.02 dB
Peak SAR (extrapolated) = 0.299 W/kg
SAR(1 g) = 0.168 W/kg; SAR(10 g) = 0.089 W/kg
Maximum value of SAR (measured) = 0.210 W/kg



Repeated SAR

Test Laboratory: AGC Lab

Date: Jan. 18,2017

Mid- Head SAR-Back(1DH1)

DUT: Bluetooth headset ; Type: AMP PRO

Communication System: 2.4GHz; Communication System Band: 2.4GHz; Duty Cycle:33%;
Frequency: 2441 MHz; Medium parameters used: $f = 2450$ MHz; $\sigma = 1.79$ mho/m; $\epsilon_r = 39.67$; $\rho = 1000$ kg/m³ ;
Phantom section: Flat Section
Ambient temperature (°C): 21.9, Liquid temperature (°C): 21.1

DASY Configuration:

- Probe: ES3DV3 – SN3337; ConvF(4.63, 4.63, 4.63); Calibrated:09/28/2016
- Sensor-Surface: 3mm (Mechanical Surface Detection), z = 1.0, 31.0
- Electronics: DAE4 Sn1398; Calibrated: 02/02/2016
- Phantom: ELI v5.0; Type: QDOVA002AA; Serial: TP:1210;
- DASY52 52.8.7(1137); SEMCAD X 14.6.10(7164)

BACK/DH1-REPEATED/Area Scan (9x10x1): Measurement grid: dx=10mm, dy=10mm

Maximum value of SAR (measured) = 1.44 W/kg

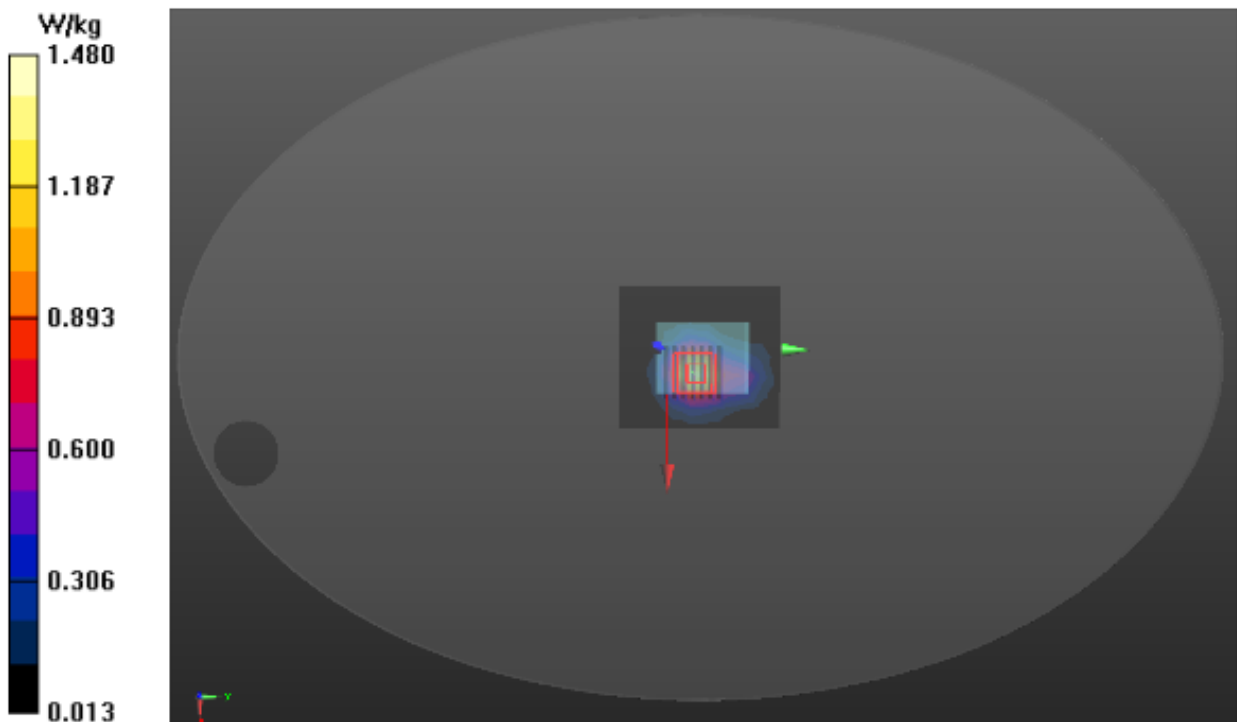
BACK/DH1-REPEATED/Zoom Scan (7x7x7)/Cube 0: Measurement grid: dx=5mm, dy=5mm, dz=5mm

Reference Value = 25.572 V/m; Power Drift = -0.07 dB

Peak SAR (extrapolated) = 2.04 W/kg

SAR(1 g) = 1.15 W/kg; SAR(10 g) = 0.599 W/kg

Maximum value of SAR (measured) = 1.48 W/kg



Test Laboratory: AGC Lab
Mid- Head SAR-Back(1DH1)
DUT: Bluetooth headset ; Type: AMP PRO

Date: Jan. 18,2017

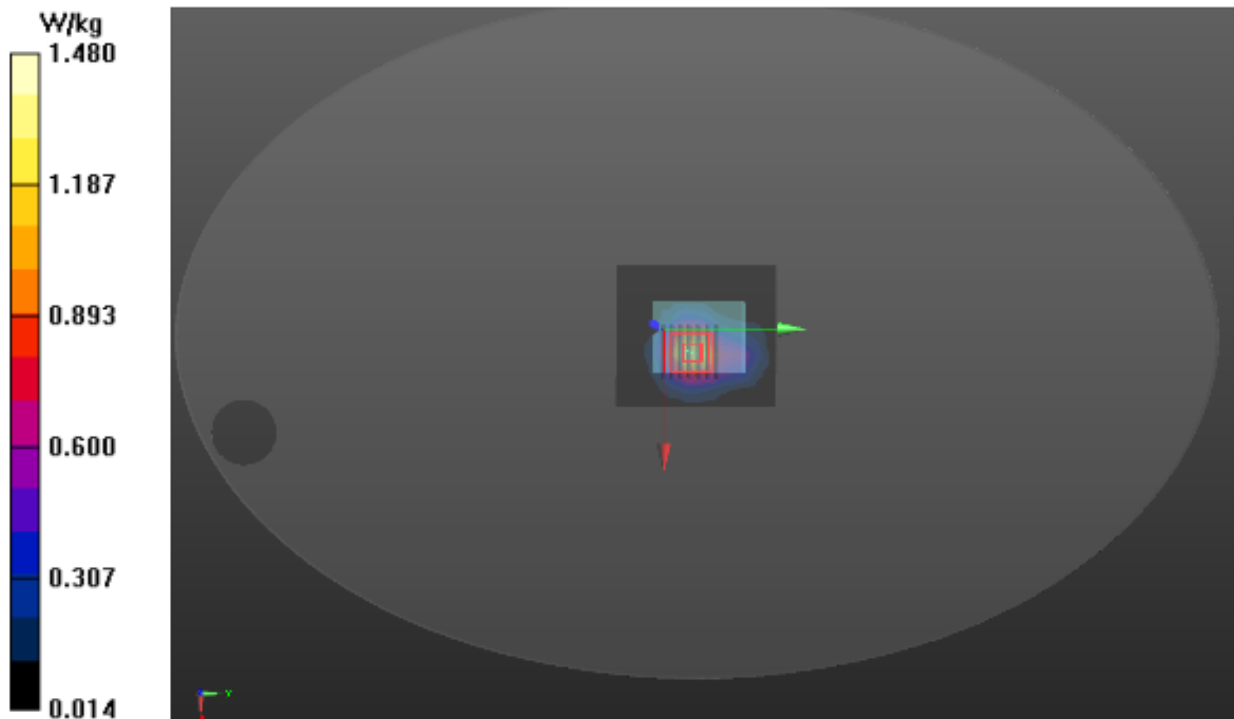
Communication System: 2.4GHz; Communication System Band: 2.4GHz; Duty Cycle:33%;
Frequency: 2441 MHz; Medium parameters used: $f = 2450$ MHz; $\sigma = 1.79$ mho/m; $\epsilon_r = 39.67$; $\rho = 1000$ kg/m³ ;
Phantom section: Flat Section
Ambient temperature (°C): 21.9, Liquid temperature (°C): 21.1

DASY Configuration:

- Probe: ES3DV3 – SN3337; ConvF(4.63, 4.63, 4.63); Calibrated:09/28/2016
- Sensor-Surface: 3mm (Mechanical Surface Detection), z = 1.0, 31.0
- Electronics: DAE4 Sn1398; Calibrated: 02/02/2016
- Phantom: ELI v5.0; Type: QDOVA002AA; Serial: TP:1210;
- DASY52 52.8.7(1137); SEMCAD X 14.6.10(7164)

BACK/DH1-REPEATED 2/Area Scan (9x10x1): Measurement grid: dx=10mm, dy=10mm
Maximum value of SAR (measured) = 1.42 W/kg

BACK/DH1-REPEATED 2/Zoom Scan (7x7x7)/Cube 0: Measurement grid: dx=5mm, dy=5mm, dz=5mm
Reference Value = 25.457 V/m; Power Drift = -0.08 dB
Peak SAR (extrapolated) = 2.03 W/kg
SAR(1 g) = 1.13 W/kg; SAR(10 g) = 0.600 W/kg
Maximum value of SAR (measured) = 1.48 W/kg



Test Laboratory: AGC Lab
Low- Body SAR-Back(1DH1)
DUT: Bluetooth headset ; Type: AMP PRO

Date: Jan. 20,2017

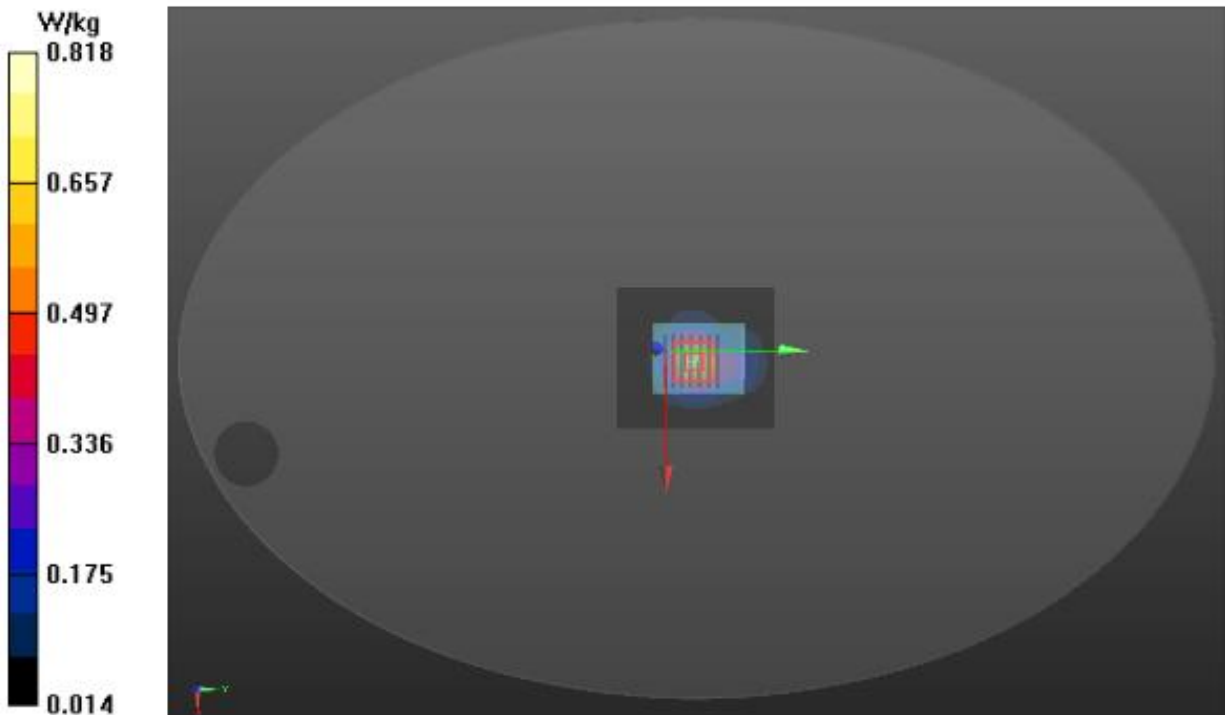
Communication System: 2.4GHz; Communication System Band: 2.4GHz; Duty Cycle:33%;
Frequency: 2402 MHz; Medium parameters used: $f = 2450$ MHz; $\sigma = 1.87$ mho/m; $\epsilon_r = 54.88$; $\rho = 1000$ kg/m³ ;
Phantom section: Flat Section
Ambient temperature (°C): 21.9, Liquid temperature (°C): 21.0

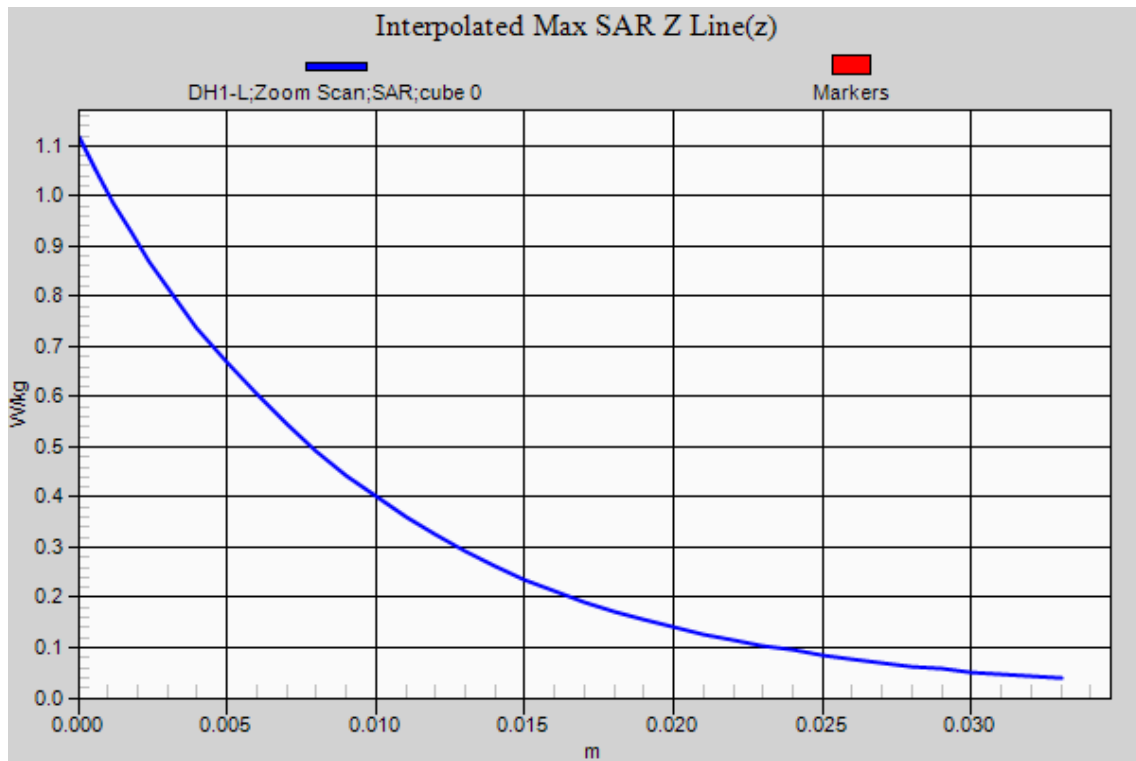
DASY Configuration:

- Probe: ES3DV3 – SN3337; ConvF(4.63, 4.63, 4.63); Calibrated:09/28/2016
- Sensor-Surface: 3mm (Mechanical Surface Detection), z = 1.0, 31.0
- Electronics: DAE4 Sn1398; Calibrated: 02/02/2016
- Phantom: ELI v5.0; Type: QDOVA002AA; Serial: TP:1210;
- DASY52 52.8.7(1137); SEMCAD X 14.6.10(7164)

BACK/DH1-L/Area Scan (9x10x1): Measurement grid: dx=10mm, dy=10mm
Maximum value of SAR (measured) = 0.749 W/kg

BACK/DH1-L/Zoom Scan (7x7x7)/Cube 0: Measurement grid: dx=5mm, dy=5mm, dz=5mm
Reference Value = 21.616 V/m; Power Drift = -0.10 dB
Peak SAR (extrapolated) = 1.12 W/kg
SAR(1 g) = 0.660 W/kg; SAR(10 g) = 0.344 W/kg
Maximum value of SAR (measured) = 0.818 W/kg





Test Laboratory: AGC Lab
Mid- Body SAR-Back(1DH1)
DUT: Bluetooth headset ; Type: AMP PRO

Date: Jan. 20,2017

Communication System: 2.4GHz; Communication System Band: 2.4GHz; Duty Cycle:33%;
Frequency: 2441 MHz; Medium parameters used: $f = 2450$ MHz; $\sigma = 1.89$ mho/m; $\epsilon_r = 54.10$; $\rho = 1000$ kg/m³ ;
Phantom section: Flat Section
Ambient temperature (°C): 21.9, Liquid temperature (°C): 21.0

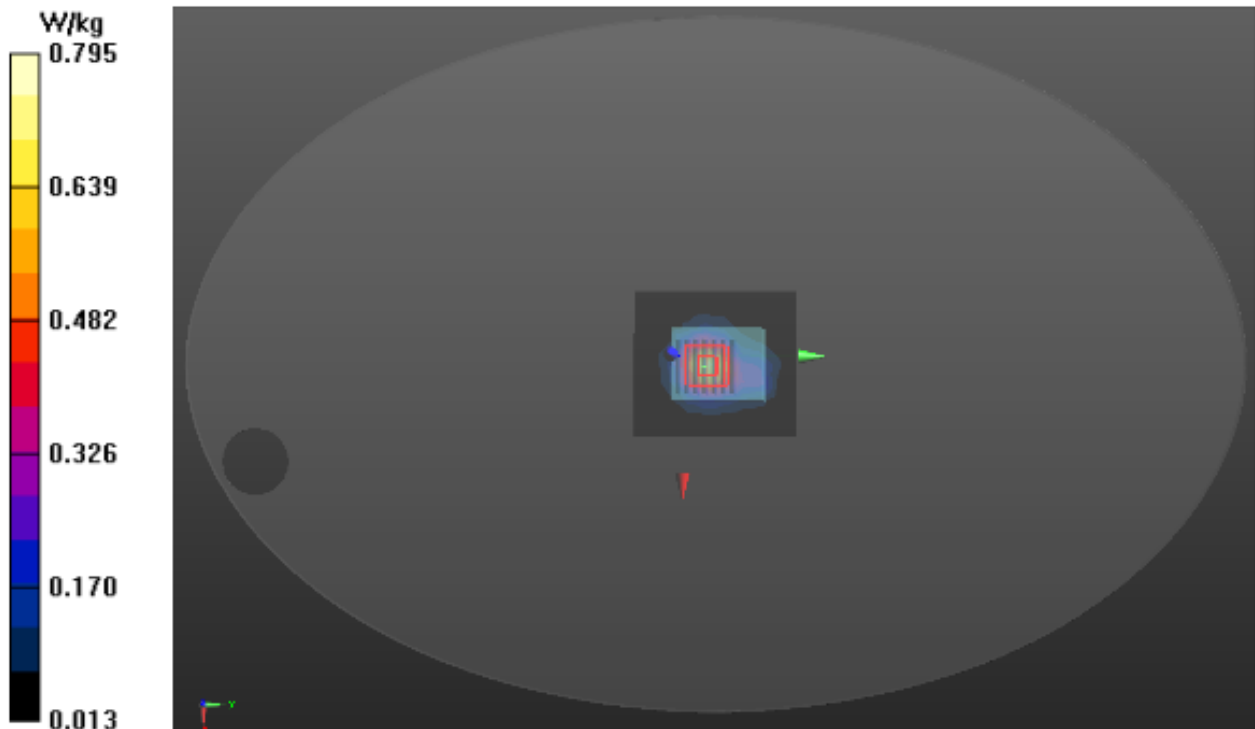
DASY Configuration:

- Probe: ES3DV3 – SN3337; ConvF(4.63, 4.63, 4.63); Calibrated:09/28/2016
- Sensor-Surface: 3mm (Mechanical Surface Detection), z = 1.0, 31.0
- Electronics: DAE4 Sn1398; Calibrated: 02/02/2016
- Phantom: ELI v5.0; Type: QDOVA002AA; Serial: TP:1210;
- DASY52 52.8.7(1137); SEMCAD X 14.6.10(7164)

BACK/DH1/Area Scan (9x10x1): Measurement grid: dx=10mm, dy=10mm
Maximum value of SAR (measured) = 0.764 W/kg

BACK/DH1/Zoom Scan (7x7x7)/Cube 0: Measurement grid: dx=5mm, dy=5mm, dz=5mm
Reference Value = 12.290 V/m; Power Drift = 0.18 dB
Peak SAR (extrapolated) = 1.10 W/kg

SAR(1 g) = 0.633 W/kg; SAR(10 g) = 0.325 W/kg
Maximum value of SAR (measured) = 0.795 W/kg



Test Laboratory: AGC Lab
High- Body SAR-Back(1DH1)
DUT: Bluetooth headset ; Type: AMP PRO

Date: Jan. 20,2017

Communication System: 2.4GHz; Communication System Band: 2.4GHz; Duty Cycle:33%;
Frequency: 2480 MHz; Medium parameters used: $f = 2450$ MHz; $\sigma = 1.92$ mho/m; $\epsilon_r = 52.25$; $\rho = 1000$ kg/m³ ;
Phantom section: Flat Section
Ambient temperature (°C): 21.9, Liquid temperature (°C): 21.0

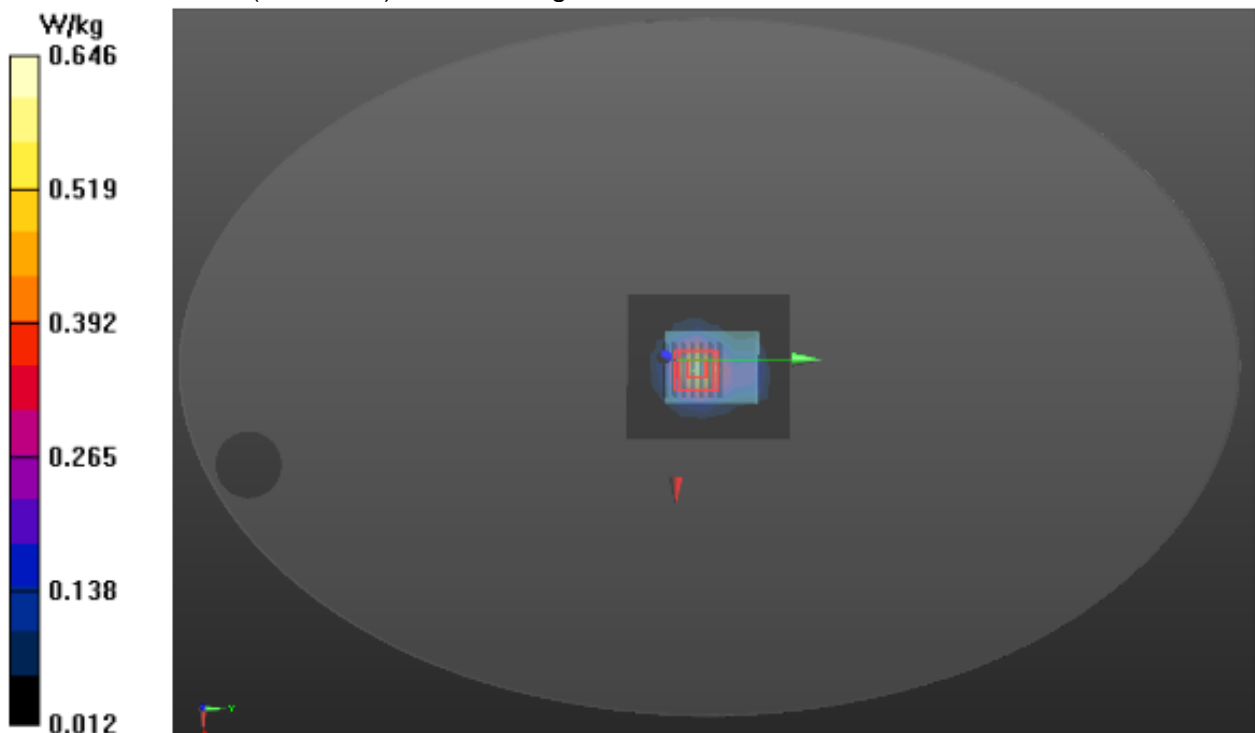
DASY Configuration:

- Probe: ES3DV3 – SN3337; ConvF(4.63, 4.63, 4.63); Calibrated:09/28/2016
- Sensor-Surface: 3mm (Mechanical Surface Detection), z = 1.0, 31.0
- Electronics: DAE4 Sn1398; Calibrated: 02/02/2016
- Phantom: ELI v5.0; Type: QDOVA002AA; Serial: TP:1210;
- DASY52 52.8.7(1137); SEMCAD X 14.6.10(7164)

BACK/DH1-H/Area Scan (9x10x1): Measurement grid: dx=10mm, dy=10mm
Maximum value of SAR (measured) = 0.630 W/kg

BACK/DH1-H/Zoom Scan (7x7x7)/Cube 0: Measurement grid: dx=5mm, dy=5mm, dz=5mm
Reference Value = 17.981 V/m; Power Drift = -0.04 dB
Peak SAR (extrapolated) = 0.907 W/kg

SAR(1 g) = 0.512 W/kg; SAR(10 g) = 0.262 W/kg
Maximum value of SAR (measured) = 0.646 W/kg



Test Laboratory: AGC Lab
Mid- Body SAR-Back(2DH3)
DUT: Bluetooth headset ; Type: AMP PRO

Date: Jan. 20,2017

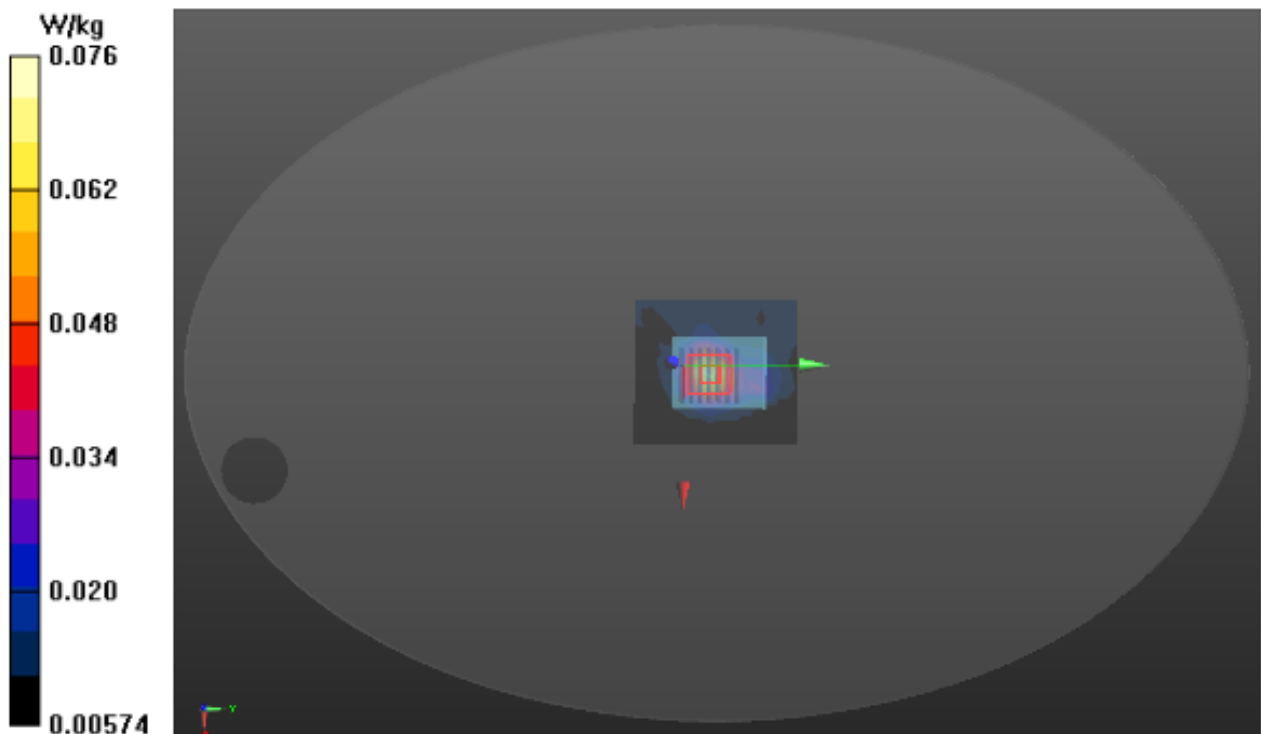
Communication System: 2.4GHz; Communication System Band: 2.4GHz; Duty Cycle:67%;
Frequency: 2441 MHz; Medium parameters used: $f = 2450$ MHz; $\sigma = 1.89$ mho/m; $\epsilon_r = 54.10$; $\rho = 1000$ kg/m³ ;
Phantom section: Flat Section
Ambient temperature (°C): 21.9, Liquid temperature (°C): 21.0

DASY Configuration:

- Probe: ES3DV3 – SN3337; ConvF(4.63, 4.63, 4.63); Calibrated:09/28/2016
- Sensor-Surface: 3mm (Mechanical Surface Detection), z = 1.0, 31.0
- Electronics: DAE4 Sn1398; Calibrated: 02/02/2016
- Phantom: ELI v5.0; Type: QDOVA002AA; Serial: TP:1210; ;
- DASY52 52.8.7(1137); SEMCAD X 14.6.10(7164)

BACK/2DH3/Area Scan (9x10x1): Measurement grid: dx=10mm, dy=10mm
Maximum value of SAR (measured) = 0.0757 W/kg

BACK/2DH3/Zoom Scan (7x7x7)/Cube 0: Measurement grid: dx=5mm, dy=5mm, dz=5mm
Reference Value = 6.241 V/m; Power Drift = 0.11 dB
Peak SAR (extrapolated) = 0.104 W/kg
SAR(1 g) = 0.063 W/kg; SAR(10 g) = 0.037 W/kg
Maximum value of SAR (measured) = 0.0762 W/kg



Test Laboratory: AGC Lab
Mid- Body SAR-Back(3DH5)
DUT: Bluetooth headset ; Type: AMP PRO

Date: Jan. 20,2017

Communication System: 2.4GHz; Communication System Band: 2.4GHz; Duty Cycle: 78%;
Frequency: 2441 MHz; Medium parameters used: $f = 2450$ MHz; $\sigma = 1.89$ mho/m; $\epsilon_r = 54.10$; $\rho = 1000$ kg/m³ ;
Phantom section: Flat Section
Ambient temperature (°C): 21.9, Liquid temperature (°C): 21.0

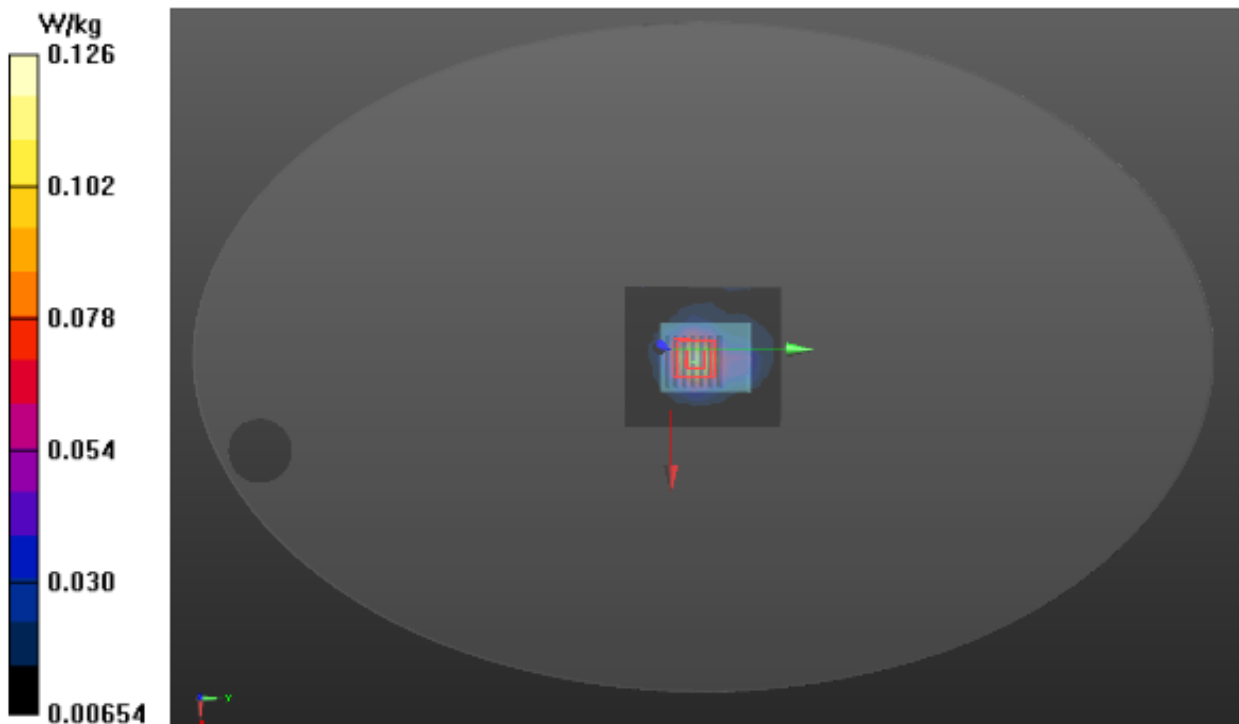
DASY Configuration:

- Probe: ES3DV3 – SN3337; ConvF(4.63, 4.63, 4.63); Calibrated:09/28/2016
- Sensor-Surface: 3mm (Mechanical Surface Detection), z = 1.0, 31.0
- Electronics: DAE4 Sn1398; Calibrated: 02/02/2016
- Phantom: ELI v5.0; Type: QDOVA002AA; Serial: TP:1210; ;
- DASY52 52.8.7(1137); SEMCAD X 14.6.10(7164)

BACK/3DH5/Area Scan (9x10x1): Measurement grid: dx=10mm, dy=10mm
Maximum value of SAR (measured) = 0.123 W/kg

BACK/3DH5/Zoom Scan (7x7x7)/Cube 0: Measurement grid: dx=5mm, dy=5mm, dz=5mm
Reference Value = 8.153 V/m; Power Drift = 0.05 dB
Peak SAR (extrapolated) = 0.176 W/kg

SAR(1 g) = 0.103 W/kg; SAR(10 g) = 0.057 W/kg
Maximum value of SAR (measured) = 0.126 W/kg



Test Laboratory: AGC Lab
Mid- Body SAR-Front(1DH1)
DUT: Bluetooth headset ; Type: AMP PRO

Date: Jan. 20,2017

Communication System: 2.4GHz; Communication System Band: 2.4GHz; Duty Cycle:33%;
Frequency: 2441 MHz; Medium parameters used: $f = 2450$ MHz; $\sigma = 1.89$ mho/m; $\epsilon_r = 54.10$; $\rho = 1000$ kg/m³ ;
Phantom section: Flat Section
Ambient temperature (°C): 21.9, Liquid temperature (°C): 21.0

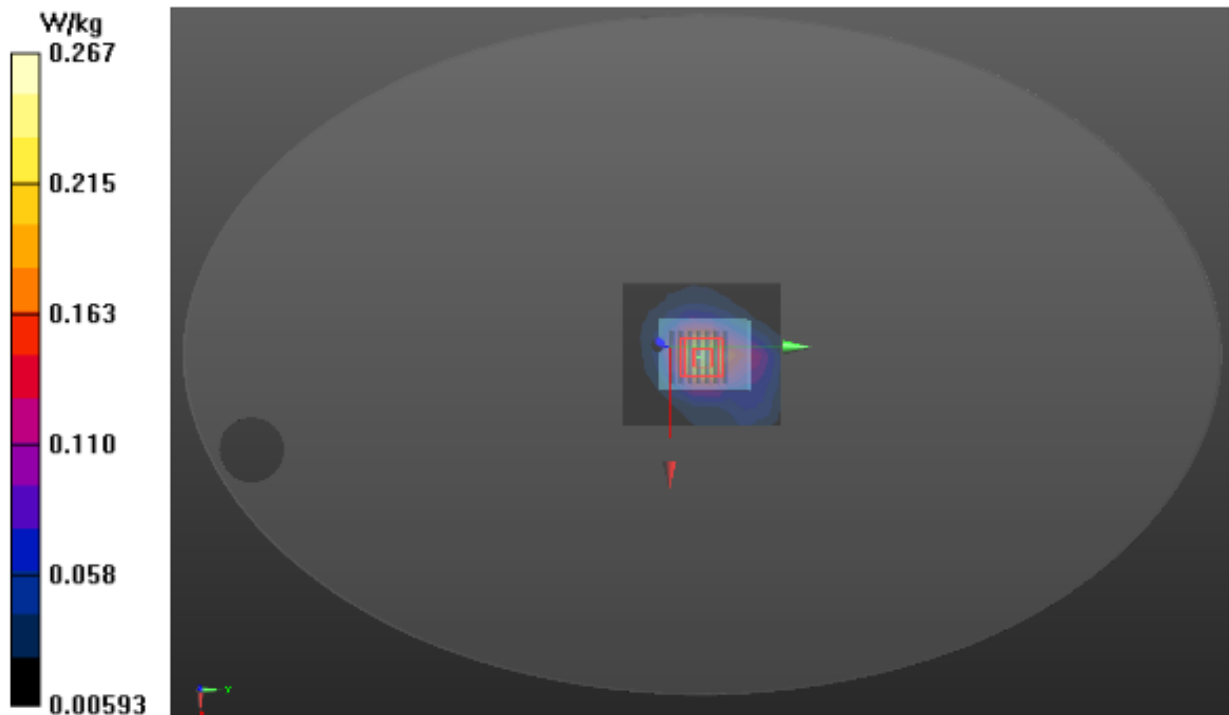
DASY Configuration:

- Probe: ES3DV3 – SN3337; ConvF(4.63, 4.63, 4.63); Calibrated:09/28/2016
- Sensor-Surface: 3mm (Mechanical Surface Detection), z = 1.0, 31.0
- Electronics: DAE4 Sn1398; Calibrated: 02/02/2016
- Phantom: ELI v5.0; Type: QDOVA002AA; Serial: TP:1210;
- DASY52 52.8.7(1137); SEMCAD X 14.6.10(7164)

BACK/DH1/Area Scan (9x10x1): Measurement grid: dx=10mm, dy=10mm
Maximum value of SAR (measured) = 0.255 W/kg

BACK/DH1/Zoom Scan (7x7x7)/Cube 0: Measurement grid: dx=5mm, dy=5mm, dz=5mm
Reference Value = 12.290 V/m; Power Drift = -0.08 dB
Peak SAR (extrapolated) = 0.380 W/kg

SAR(1 g) = 0.216 W/kg; SAR(10 g) = 0.118 W/kg
Maximum value of SAR (measured) = 0.267 W/kg



APPENDIX C. TEST SETUP PHOTOGRAPHS & EUT PHOTOGRAPHS

Refer to Attached files.

APPENDIX D. CALIBRATION DATA

Refer to Attached files.