

RXAM-JD1 Access Point User Manual



Table of Contents

1	INTRODUCTION.....	5
1.1	PRODUCT APPEARANCE AND LAYOUT	5
1.2	LED LIGHT GUIDE	5
2	MOUNTING THE ACCESS POINT.....	6
2.1	ACCESSORIES FOR INSTALLATION.....	6
2.2	MAIN BRACKET	6
2.3	CEILING MOUNTING	7
2.4	PENDANT MOUNT	10
2.5	WALL MOUNTING	11
2.6	CHOOSING A PoE INJECTOR FOR THE DEVICE.....	12
3	PRODUCT SPECIFICATIONS.....	13

Federal Communication Commission Interference Statement

This equipment has been tested and found to comply with the limits for a Class B digital device, pursuant to Part 15 of the FCC Rules. These limits are designed to provide reasonable protection against harmful interference in a residential installation. This equipment generates, uses and can radiate radio frequency energy and, if not installed and used in accordance with the instructions, may cause harmful interference to radio communications. However, there is no guarantee that interference will not occur in a particular installation. If this equipment does cause harmful interference to radio or television reception, which can be determined by turning the equipment off and on, the user is encouraged to try to correct the interference by one of the following measures:

- Reorient or relocate the receiving antenna.
- Increase the separation between the equipment and receiver.
- Connect the equipment into an outlet on a circuit different from that to which the receiver is connected.
- Consult the dealer or an experienced radio/TV technician for help.

This device complies with Part 15 of the FCC Rules. Operation is subject to the following two conditions: (1) This device may not cause harmful interference, and (2) this device must accept any interference received, including interference that may cause undesired operation.

This device is going to be operated in the 5.15–5.25GHz frequency range, it is restricted to use in indoor environments only.

This device is restricted for indoor use. Professional installation is required.

IMPORTANT NOTE:

FCC Radiation Exposure Statement:

This equipment complies with FCC radiation exposure limits set forth for an uncontrolled environment. This equipment should be installed and operated with a minimum distance of 24 cm between the radiator & your body.

FCC Caution: Any changes or modifications not expressly approved by the party responsible for compliance could void the user's authority to operate this equipment.

1 Introduction

1.1 Product Appearance and Layout



1.2 LED Light Guide

The LED indicator is located on the top right corner of the Access Point and displays the operational status of the device. Refer to the guide below for LED status descriptions:

LED Status	Description
No light	Device is unpowered or LED indicator is disabled.
Amber	An abnormality has occurred
White	Device is ready and fully operational

2 Mounting the Access Point

This section describes how to mount the Access Point.

2.1 Accessories for Installation

Main bracket × 1

Adapter brackets × 2

Wall screws × 3 (8X25)

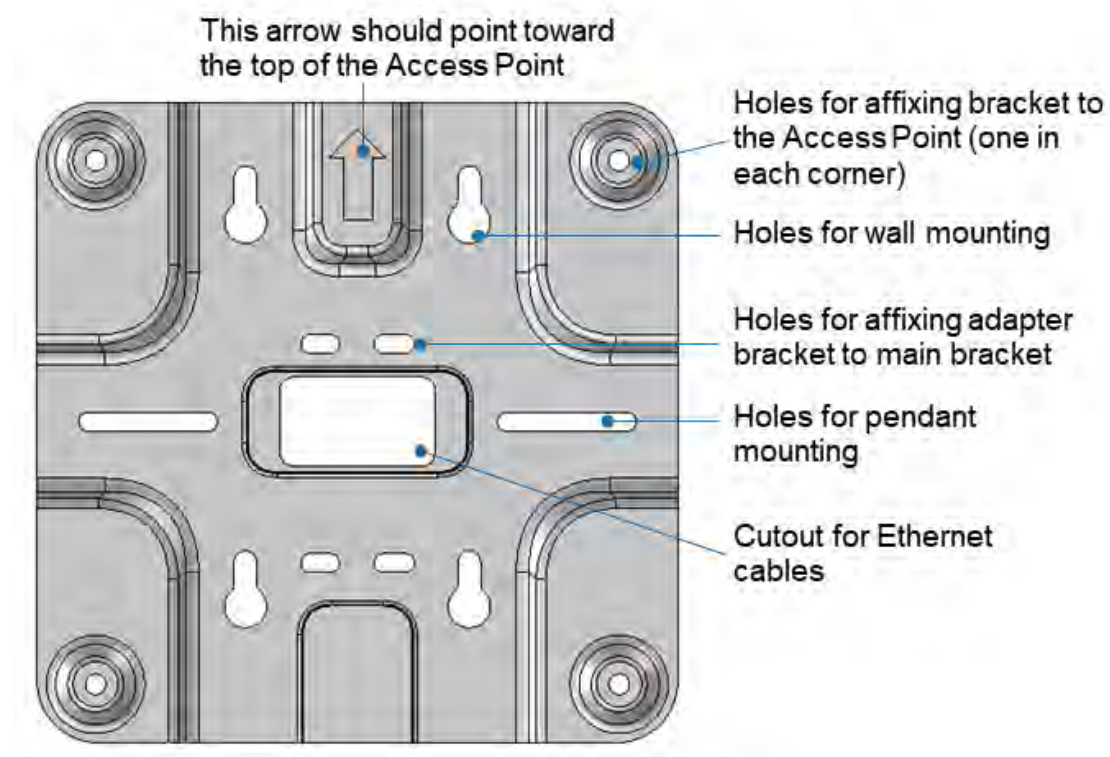
Wall anchors × 3 (BH(2#)M3-24x25 TP-A(6.3, 1.9))

M4 screws × 4 (PH+SW+WM4-0.7x8 W=8 CR3/Zn)

M3 screws × 4 (PH+SW+WM3-0.5x6 W=8 Ni)

2.2 Main Bracket

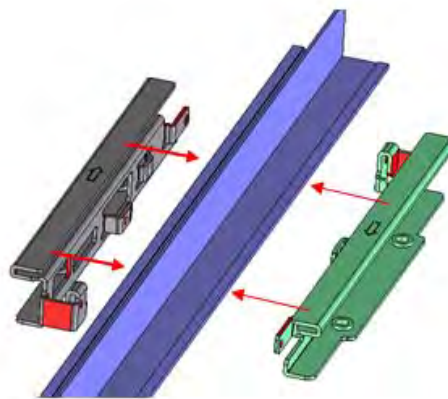
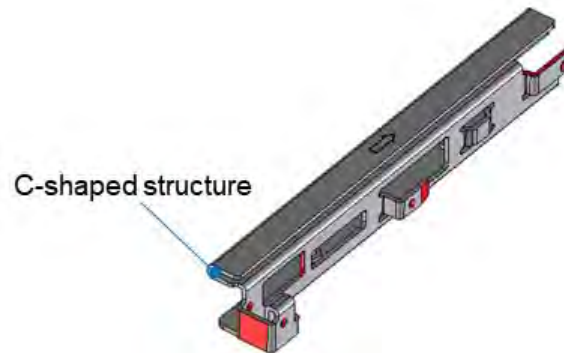
The main bracket enables the Access Point to be installed onto ceilings, walls, or pendant mounted. The features of the bracket are listed below:



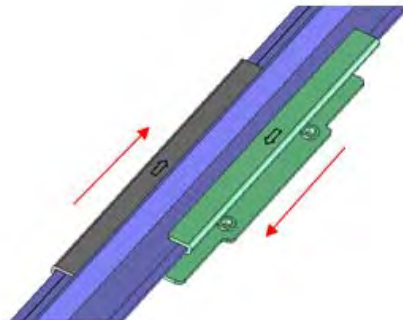
2.3 Ceiling Mounting

Refer to the steps below to mount the Access Point onto T-bar ceilings.

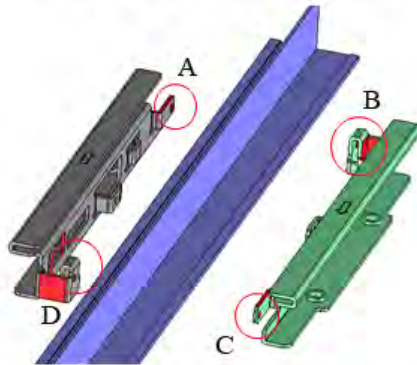
1. Use the C-shaped structure to attach the two adapter brackets to either side of the T-bar, making sure that the arrows on the brackets are facing opposite directions.



2. After the adapter brackets are affixed onto the T-bar, slide the brackets in the direction of the arrows on the brackets until they are securely attached to each other. Refer to the images below for how the adapter brackets should fit.

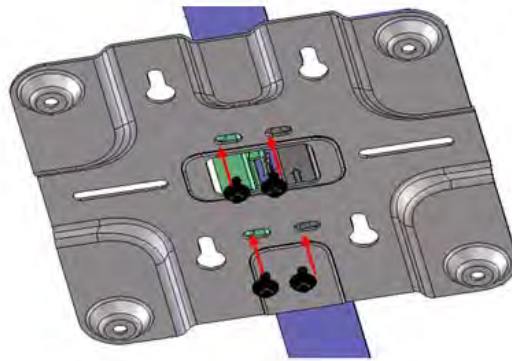


Section A of the left bracket goes into Section B of the right bracket

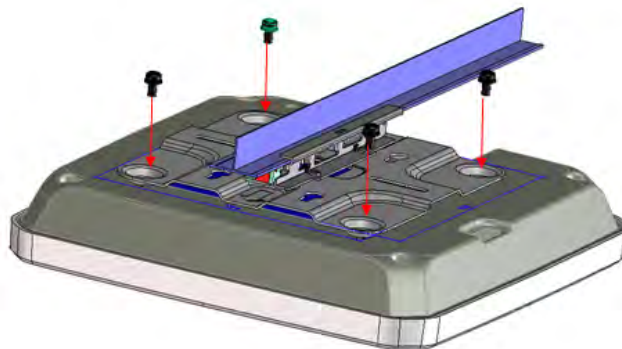


Section C of the right bracket goes into Section D of the left bracket

3. Align the screw holes on the adapter brackets with the holes on the main bracket (refer to section 2.2), then use four M3 screws to screw the main bracket to the adapter brackets.

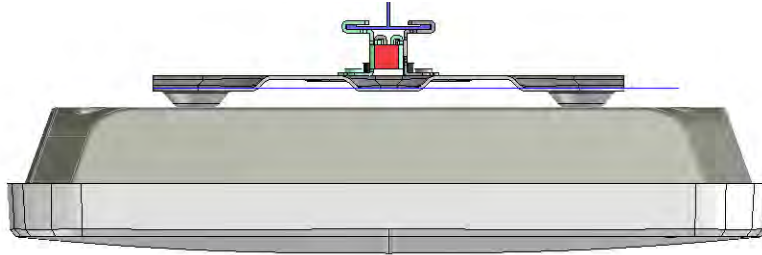


4. Align the screw holes on the main bracket with the corresponding holes on the back of the Access point, then use four M4 screws to attach the main bracket to the Access Point.



Note: Make sure the arrow on the main bracket is aligned so that it is pointing toward the top side of the Access Point.

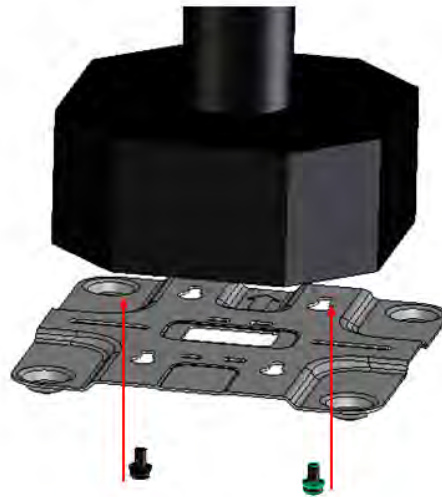
5. Once the aforementioned steps are complete, the side-view of the completed setup should look like the image below:



2.4 Pendant Mount

Refer to the steps below to mount the Access Point to a pendant mount.

1. Align the pendant mount screw holes on the main bracket with the holes on the pendant mount.
2. Use the pendant mount screws (M4 screws; length: 12.7 mm; material: normal aluminum, non-surface treated) to securely affix the main bracket to the pendant mount.



3. Align the screw holes on the main bracket with the corresponding holes on the back of the Access point, then use four M4 screws to attach the main bracket to the Access Point.

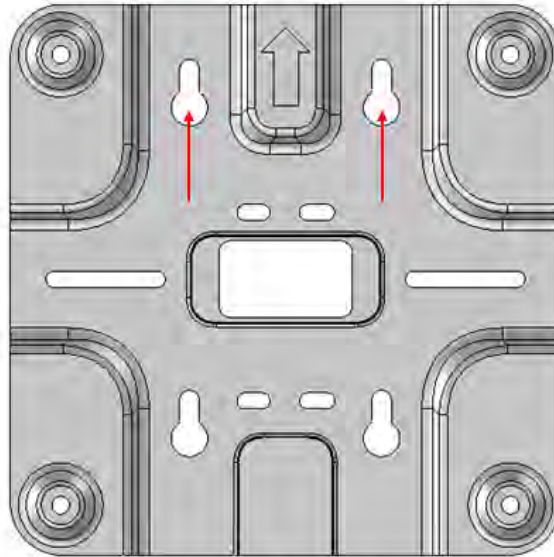


Note: Make sure the arrow on the main bracket is aligned so that it is pointing toward the top side of the Access Point.

2.5 Wall Mounting

Refer to the steps below to mount the Access Point to a wall.

1. Place the main bracket against the installation location on the wall. Use a pen or pencil to mark the points on the wall where the wall mounting holes are aligned.



After placing the bracket against the wall, mark these two locations on the wall with a pen or pencil.

2. Use a power tool to drill holes in the marked locations, then insert the wall anchors into the holes.
3. Use a power tool or a screwdriver to screw the wall mounting screws into the wall anchors. Leave about one-third of the screw length sticking out of the wall.
4. Align the screw holes on the main bracket with the corresponding holes on the back of the Access point, then use four M4 screws to attach the main bracket to the Access Point.

Note: Make sure the arrow on the main bracket is aligned so that it is pointing toward the top side of the Access Point.

5. Align the wall mounting holes on the main bracket with the wall screws, then hook the Access Point onto the wall screws.

2.6 Choosing a PoE Injector for the Device

A Power over Ethernet (PoE) injector is used to power the RXAM-JD1 Access Point. PoE injectors used with the AP must comply with the criteria listed below:

1. The "Data In" and "Data & Power out" ports on the injector must be qualified as Safety Extra-Low Voltage (SELV) circuits.
2. The circuits in the injector must have IEC 60950-1 and IEC 60950-1 Electrical Energy Source Class 1 (ES1) certification. The injector must have a nominal output voltage of 56 Vdc and a maximal input current of 0.6 A. A statement indicating that the injector is a Limited Power Source (LPS) rated power supply must also be indicated on the label of the PoE injector.

The SELV ports on the injector must only be connected to other SELV (or ES1) interfaces on other equipment.

3 Product Specifications

Outer Dimensions	220 × 220 × 42 (mm)
CPU	Marvell CN9130-1600-NG-AUS-G
Memory	SDRAM: DDR4; 1 GB × 2 NAND Flash: 512 MB SPI NOR Flash: 4 MB
Antennas	Dual-band Antenna × 4 2.4 GHz Antenna × 1
PCB	Six-layer PCB; dimensions: 191.7 × 145.75 × 1.6 (mm)
mGiga PHY	Marvell 88E2110-A0-BWS4C000 × 2
RF IC (2G/5G)	NXP 88W9064-A1-BWP2C000 × 2
Ethernet port	10/100/1000/2500 Mbps auto-negotiation Ethernet ports × 2 Supports PoE 802.3at