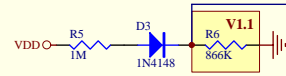
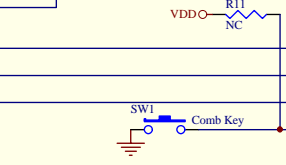
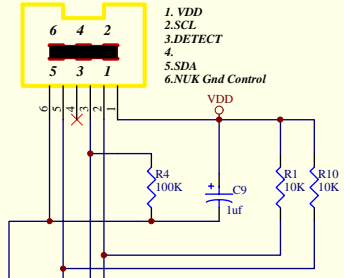
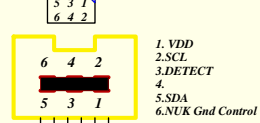
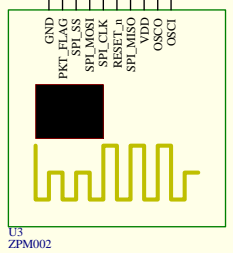
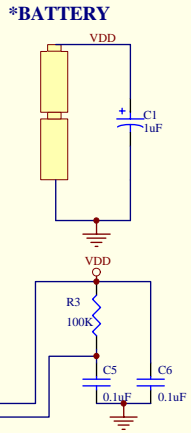
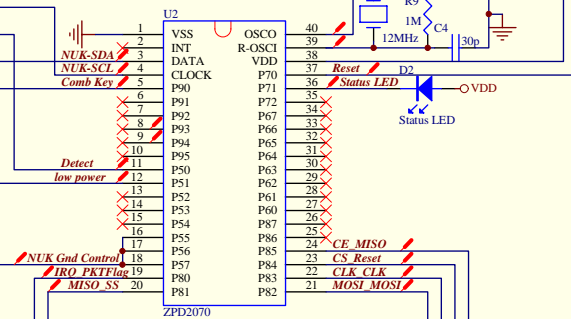


J1
WII EXPANSION PORT



OTP		MASK	
Low Power Voltage	2.3V+/-0.5	Low Power Voltage	2.3V+/-0.5
R5	1M+/-1%	R5	1M+/-1%
R6	787K+/-1%	R6	866K+/-1%



Version1.1 : 2007/12/10
 (1)Change R6-787K->R6=866K
 Version1.1a : 2007/12/1
 (1)Change MODULE -> ZPM

孕龍科技股份有限公司
ZEROPLUS TECHNOLOGY CO.; LTD

Project Name :		Revision: V1.1a	
Project Number : ZPD2070+ZPM002		Date: 2007/12/14	
Date: 2007/12/14		Sheet: of	
Approver		Check	
GM	PM	Check	Design

Edited by Foxit PDF Editor
 Copyright (c) by Foxit Software Company, 2004
 For Evaluation Only.