



Angelcare[®]

FOR YOUR PEACE OF MIND

OWNER'S MANUAL


VIDEO, MOVEMENT
& SOUND MONITOR

Model AC215





TABLE OF CONTENTS

 **WARNINGS**3

AC215 SETUP REQUIREMENTS 5

STEP 1 - Charging the Parent Unit (9 hours)..... 6

STEP 2 - Installing the Sensor Pad 7

STEP 3 - Setting up the Nursery Unit 9

STEP 4 - Turning on your monitor 9

STEP 5 - Testing and getting to know your monitor 10

STEP 6 - Activating and deactivating additional functions 13

Troubleshooting 17

Limited warranty 18

Technical specifications 18

FRANÇAIS 19

OWNER'S MANUAL

KEEP YOUR OWNER'S MANUAL FOR FUTURE REFERENCE.

PLEASE READ THE WARNINGS AND INSTRUCTIONS CAREFULLY BEFORE ASSEMBLING & USING THE PRODUCT.

FAILURE TO FOLLOW THE WARNINGS AND THE INSTRUCTIONS COULD RESULT IN SERIOUS INJURY OR DEATH OR DAMAGES TO THE PRODUCT.

THE SENSOR PAD FEATURE IS NOT FOR USE WITH ADULTS, CHILDREN OR INFANTS OLDER THAN 24 MONTHS.

THE SENSOR PAD IS NOT INTENDED TO BE USED TO DETERMINE IF A CHILD IS OUT OF THE CRIB.

 **WARNING**

Adult assembly required.
Keep small parts away from children when assembling.

We, at Angelcare®, stand behind all of our products.
If you are not completely satisfied or have any questions,
United States and Canada: Please contact us at: angelcare@cdecinc.ca
Other countries: Please contact your local distributor.

FCC AND IC REGULATIONS

RF radiation exposure statement

The Nursery Unit complies with FCC RF radiation exposure limits set forth for an uncontrolled environment.
Caution: To maintain the compliance with the FCC's and Industry Canada's RF exposure guideline, install the Nursery Unit at least 20 cm from ALL persons. The transmitter of this device must not be co-located or operating in conjunction with any other antenna or transmitter.

Industry Canada

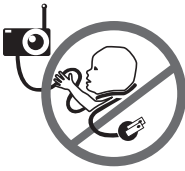
This product meets the applicable Industry Canada technical specifications.
CAN ICES-3 (B)/NMB-3 (B)



⚠ WARNINGS

1. THIS PRODUCT CANNOT REPLACE RESPONSIBLE ADULT SUPERVISION. This product is designed to aid in the monitoring of your child. When using the monitor, you must still provide the supervision necessary for the continued safety of your child. Monitoring of premature babies, or those considered to be at risk, should always be carried out under the supervision of a health professional. This monitor **SHOULD NOT** be used as a medical device, nor as a device to prevent Sudden Infant Death Syndrome (SIDS).

2. WARNING Strangulation Hazard – Children have STRANGLED in cords. Keep adapter cords



out of the reach of children (more than 1 meter away). **NEVER** use Sensor Pad(s) without the protective cord covering. Check protective cord covering before each use. Immediately discontinue use of Sensor Pad(s) if protective covering is

damaged or broken.

3. Never use extension cords with adapters. ONLY use the adapters provided.

4. When an adapter is plugged into an electrical outlet, DO NOT touch the exposed end.

5. ALWAYS be sure that both the transmitter and receiver are working properly and are within range of each other. Test the monitor before first use, periodically and when changing location of the Nursery Unit.

6. ALWAYS be sure to immediately check on baby whenever an alarm sounds.

7. DO NOT use monitor near water (such as bath tub, sink, etc.).



8. Keep monitor AWAY from heat sources (such as stoves, radiators, etc.).

9. ALWAYS place both the Nursery Unit and the Parent Unit on a flat surface in an upright position and allow for proper ventilation. **DO NOT** place on sofas, cushions, beds, etc. which may block ventilation.

10. This monitor uses public airwaves to transmit signals. The Parent Unit may pick up signals or interference from other nursery monitors in your area. Your monitor may even be picked up by other households. To protect your privacy, make sure both units are turned **OFF** when not in use. If you experience interference, change the channel on both units.

11. This product is NOT a toy. DO NOT allow children to play with it.

12. This product contains small parts. Adult assembly required. Exercise care when unpacking

and assembling the product and keep small parts away from children.

13. When using the monitor, the room temperature should be between 10°C and 40°C.

⚠ BATTERY WARNING

14. Danger of explosion if batteries are incorrectly replaced. The Parent Unit battery is a replaceable Li-Ion battery. Only use the Angelcare recommended replacement battery. In both units, **DO NOT** mix old and new batteries. **DO NOT** mix alkaline, standard or rechargeable batteries. Insert batteries with correct polarity. **DO NOT** short-circuit supply terminals. **ONLY** use the recommended batteries or equivalent (volts and size) and the correct adapter. Remove batteries in both units when product is stored for long periods of time or when batteries are exhausted. Dispose exhausted batteries properly. Keep all batteries away from children.

15. IMPORTANT SAFETY INSTRUCTIONS

15.1 Heed all warnings – All warnings on the product and in the operating instructions should be adhered to.

15.2 Follow all instructions – All operating and use instructions should be followed.

15.3 Water and moisture – DO NOT use this apparatus near water. For example, near a bath tub, wash bowl, kitchen sink, laundry tub, in a wet environment or near a swimming pool and the like. Care should be taken so that objects **DO NOT** fall onto units and that liquids are not spilled into either unit or Sensor Pad through its openings.

15.4 Cleaning – Disconnect all units before cleaning. DO NOT immerse in water any part of the monitor. Clean only with dry cloth.

15.5 Ventilation – DO NOT block any ventilation openings. Allow for proper ventilation when units are in use. **DO NOT** cover the Nursery Unit or the Parent Unit with any object such as a blanket. **DO NOT** place it in a drawer or in any location which would muffle the sound or interfere with the normal flow of air.

15.6 Heat sources – DO NOT install near any heat sources such as radiators, heat registers, stoves, TVs or other apparatus (including amplifiers) that produce heat. Heat can damage the case or electrical parts.

15.7 Power cord protection – Protect the Sensor Pad cord and Adapter's power cord from being walked on or pinched by furniture or other items – Power supply cords should be routed so that they are not likely to be walked on or pinched by items upon or against them, paying particular attention to cords and plugs, convenience receptacle, and the point where they exit from the product. The socket outlet shall be installed near the equipment and shall be easily accessible. Make sure to plug the adapter to the socket outlet nearest to the equipment and that is easily accessible. To disconnect from mains, unplug the adapter.

15.8 Accessories – Only use attachments/accessories specified by the manufacturer. DO



NOT place this product on an unstable cart, stand, tripod, bracket or table. The product may fall, causing serious injury to a child or adult and serious damage to the product. Use ONLY with a cart, stand, tripod, bracket or table recommended by the manufacturer or sold with the product. Any mounting of the product should follow the manufacturer's instructions.

15.9 Unplug this appliance during lightning storms or when not used for long periods of time.

15.10 Servicing - DO NOT attempt to service this product yourself as opening or removing covers (except battery door) may expose you to dangerous voltage or other hazards.

15.11 Replacement parts - When replacement parts are required, be sure the replacement parts specified by the manufacturer have the same characteristic as the original part. Unauthorized substitution may result in fire, electric shock or other hazards.

15.12 Usage - This baby monitor is intended as an aid. It is NOT a substitute for responsible and proper adult supervision and should not be used as such. Use this appliance ONLY for its intended use as described in this manual.

15.13 Power Sources - Operate this product only from the type of power source indicated on the type plate of the adaptor. If you are unsure of the type of power supply to your home, consult your dealer or local power company.

15.14 Overloading - DO NOT overload wall outlets, extension cords or integral convenience receptacles as this can result in a risk of fire or electric shock.

15.15 Object and Liquid Entry - NEVER push objects of any kind into this product through casing slots as they may touch dangerous voltage points or short out parts that could result in a risk of fire or electric shock. NEVER spill liquid of any kind on the product.

15.16 Antenna - The antenna used for this transmitter must be installed to provide a separation distance of at least 20 cm from all persons and must not be collocated or operating in conjunction with any other antenna or transmitter.

15.17 Power Lines - An outside antenna system should NOT be located in the vicinity of overhead power lines or other electric light or power circuit, or where it can fall into such power lines or circuits as contact with them may be fatal.

15.18 Vibration Source - When the monitor is in use, DO NOT use a crib mobile or other crib accessories that may produce vibrations. Other sources of vibrations may include fans, washing machines, loud music, etc. These sources of vibration may interfere with the performance of your Angelcare® monitor and the alarm will not sound if it continues to detect any movement other than your baby's. Be sure all vibration sources are eliminated before using the monitor. You may experience false alarms for several reasons. The most common reason is the Nursery Unit has not been turned **OFF** after you have removed your baby from the crib. Another reason is the Sensor Pad has not been placed under the mattress properly. Be sure the Sensor Pad is on a flat, firm surface with the printed side facing up. The sensitivity level may also need to be adjusted. Refer to **Step**

5.1. Always be sure to immediately check on baby whenever an alarm sounds.

15.19 Sensor Pad - Your Sensor Pad can be used in any crib that is stationary. If the crib has a spring or slat base, place a hard board between the crib base and the Sensor Pad measuring at least 33 x 33 cm and 6 mm thick. Only use your Angelcare® monitor in a stationary sleeping environment such as a crib where the Sensor Pad can rest on a completely flat, firm surface. The sensor pad is made of plastic and does not permit the air to circulate. Therefore, mildew build up could develop underneath the mattress in the sensor pad area. We suggest rotating the mattress regularly to prevent any mildew.

16. IMPORTANT SAFETY INSTRUCTIONS RELATED TO USE OF BATTERIES

16.1 Use ONLY the type and size of batteries specified in the owner's manual. There is a risk of explosion if batteries are replaced with an incorrect type.

16.2 Charge the battery for 9 hours prior to first use. Be sure to have the monitor in the **OFF** position during this period. ONLY use the adapters included with your monitor.

16.3 DO NOT use these adapters with any other equipments.

16.4 When unplugging the adapter from the Nursery Unit, be sure it is switched to the **OFF** position. If it isn't, the unit will revert to battery mode if batteries are installed.

16.5 DO NOT use rechargeable batteries in the Nursery Unit. Use alkaline batteries ONLY.

16.6 DO NOT dispose batteries in fire. They may explode. Check with local regulations for possible special disposal instructions.

16.7 Exercise care in handling batteries in order not to short out the batteries with conducting materials such as rings, bracelets and keys. Overcharging, short circuiting, reverse charging, mutilation, or incineration of batteries must be avoided to prevent one or more of the following occurrences: release of toxic materials, release of hydrogen and/or oxygen, gas and rise in surface temperature.

16.8 DO NOT attempt to recharge batteries provided with or identified for use with this product that are not intended to be charged. The batteries may leak corrosive electrolyte or explode.

16.9 DO NOT attempt to rejuvenate the batteries provided with or identified for use with this product by heating them. Sudden release of battery electrolyte may occur, causing burns or irritation to eyes or skin.

16.10 If and when necessary, the batteries must be replaced with identical new ones or equivalent (volts and size). If a battery to be replaced is connected with other batteries in series, replace the other batteries at the same time as well. DO NOT mix old and new batteries.

16.11 Reverse polarity installation of the batteries in the end product must be avoided. Reverse insertion of batteries can cause charging, and that may result in leakage or explosion.





16.12 Remove batteries from both units if you store the product over 30 days because the batteries could leak and damage the product.

16.13 Discard 'dead' batteries as soon as possible since 'dead' batteries are more likely to leak in a product. If a battery has leaked or vented, it should be replaced immediately using protective gloves.

16.14 DO NOT store this product, or the batteries provided with or identified for use with this product, in high-temperature areas.

FCC WARNING

17. (North America Only)

17.1 Warning: Changes or modifications to this equipment not expressly approved by the party responsible for compliance could void the user's authority to operate the equipment.

17.2 NOTE: This equipment has been tested and found to comply with part 15 of the FCC Rules. These limits are designed to provide reasonable protection against harmful interference in a residential installation. This equipment generates, uses and can radiate radio frequency energy and, if not installed and used in accordance with the instructions, may cause harmful interference to radio communications.

17.3 However, there is no guarantee that interference will not occur in a particular

installation. If this equipment does cause harmful interference to radio or television reception, which can be determined by turning the equipment **OFF** and **ON**, the user is encouraged to try to correct the interference by one or more of the following measures:

- Reorient or relocate the receiving antenna.
- Increase the separation between the equipment and receiver.
- Connect the equipment into an outlet on a circuit different from that to which the receiver is connected.
- Consult the dealer or an experienced radio/TV technician for help.

17.4 This device complies with the part 15 of the FCC Rules . Operation is subject to the following two conditions:

- (1) This device may not cause harmful interference, and
- (2) This device must accept any interference received, including interference that may cause undesired operation.

IC

17.5 This device complies with Industry Canada license-exempt RSS standard(s). Operation is subject to the following two conditions:

- (1) This device may not cause harmful interference, and
- (2) This device must accept any interference received, including interference that may cause undesired operation.

SETUP REQUIREMENTS

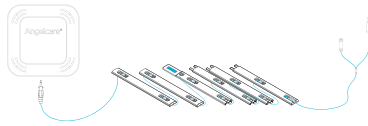
INCLUDED:



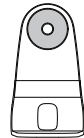
Parent Unit with Rechargeable Battery



Nursery Unit



1 Sensor Pad (AC215) or 2 Sensor Pads (AC215-2SP) with pre-installed cord covers



Tabletop stand (for camera)

VIDEO, MOVEMENT & SOUND MONITOR

YOU MUST PREPARE:

One hardboard (not included)

Thickness: **6 mm**

Minimum dimensions:

33 cm x 33 cm

Maximum dimensions:

equal to the mattress size



Hardboard

IMPORTANT

The hardboard must be larger than the Sensor Pad surface area or in the case of the AC215-2SP of two Sensor Pads.

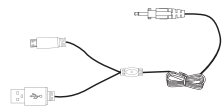
WHAT YOU WILL NEED (NOT INCLUDED):



Miniature Philips Screwdriver



AC adapter (for parent unit)



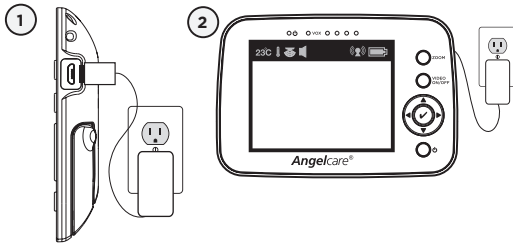
Split USB cable



AC adapter (for camera)



STEP 1 - CHARGING THE PARENT UNIT (9 HOURS)

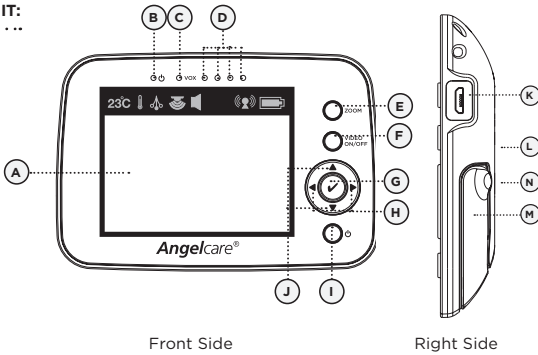



- 1) Connect the adapter to the Parent Unit and into an electrical outlet.
- 2) Charge the unit for **9 continuous hours (prior to first use).**

NOTE:

To optimize your battery performance please refer to Battery Guidelines in the Troubleshooting section.

PARENT UNIT:



- A) 3.5" LCD Screen
- B) Power **ON/OFF** Indicator
- C) VOX Indicator
- D) Sound & TIC Light Indicator
- E) Zoom button
- F) **VIDEO ON/OFF** button
- G) MENU/SELECT Button
- H) Brightness (+ or -)
- I) Power **ON/OFF** 
- J) UP/DOWN Button/Volume Control
- K) Adapter Outlet
- L) Speaker (not shown)
- M) Tripod
- N) Battery door

WARNING

STRANGULATION HAZARD.

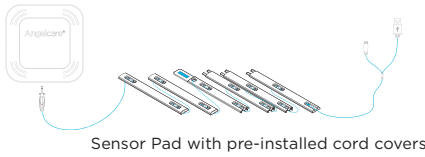
Children have **STRANGLED** in cords:

- Keep adapter cords out of the reach of children (more than 1 meter away).
- Because of the serious strangulation risk to infants and toddlers, parents and caregivers should never place the Nursery Unit within 1 meter of a crib.
- **NEVER** use Sensor Pad without the cord covers. Check cord covers before each use to ensure it is securely placed under the leg of the crib. Discontinue use of Sensor Pad if any cord covers are damaged or broken.
- **NEVER** use extension cords with adapters. **ONLY** use the adapters provided. This product is not a toy. Never allow children to play with it.





STEP 2 - INSTALLING THE SENSOR PAD



Sensor Pad with pre-installed cord covers

Cord covers 1, 2, 3, 4:
Position on floor

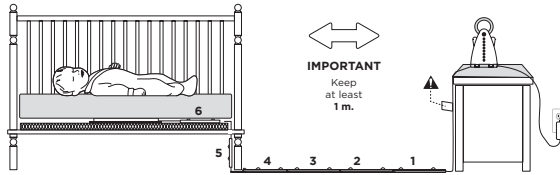
Cord cover 4:
Contains double sided tape to securely install beneath crib leg

Cord cover 5:
Position vertically between mattress support and floor

Cord cover 6:
Place under the mattress

2.1 - SELECT A LOCATION FOR THE NURSERY UNIT

Select a location for the Nursery Unit that is at least **1 meter** away from the crib.



IMPORTANT
Keep at least 1 m.

IMPORTANT

Place the crib near a supporting wall and far from air currents. Install the Nursery Unit on a flat, stable surface facing the crib at a distance of at least **1 meter**. Make sure to plug the adapter to the socket outlet nearest to the equipment and that is easily accessible.

2.2 - SELECT THE CRIB LEG YOU WILL BE USING TO SECURE THE CORD COVERS

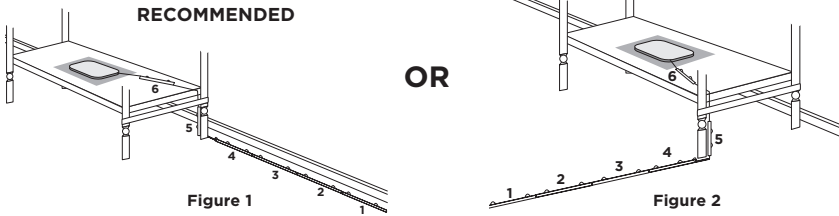
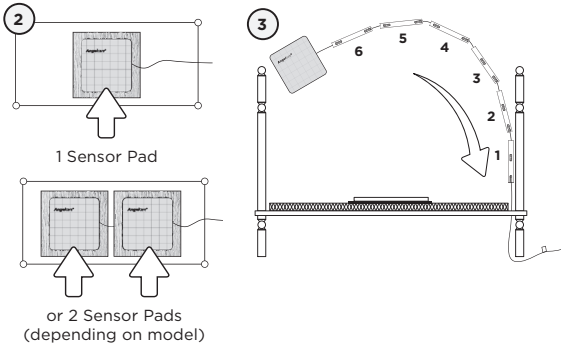


Figure 1

Figure 2

1) Use the crib leg by the wall closest to the Nursery Unit (**Figure 1**). In cases where the Nursery Unit is across the room, use the leg closest to the Nursery Unit to position the covered wire (**Figure 2**). It is always preferable that the covered cord run along a wall.

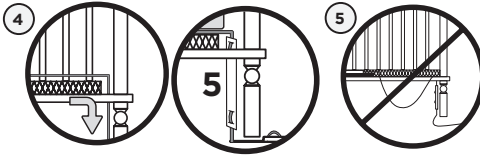
2.3 - INSTALL THE SENSOR PAD ON THE MATTRESS SUPPORT



1 Sensor Pad

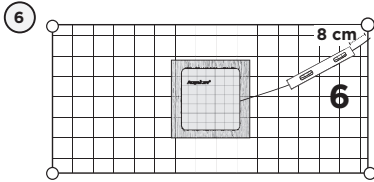
or 2 Sensor Pads
(depending on model)

- 1) Remove the mattress from the crib.
- 2) Place the Sensor Pad(s) - printed side up - **on top of the hardboard**.
- 3) Run the connection pin, warning label and the first 5 cord covers down along the backside of the crib leg, **between the mattress support and the inside edge of the crib**.



4) Bring the first 4 cord covers down the floor, and keep the 5th cord cover vertically, along the backside of the crib leg, **(between the mattress and the inside edge of the crib)**.

5) Remove any cord slack to make sure no parts of the cord are loose.

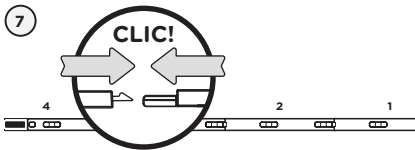


6) Place the 6th cord cover approximately 8 cm from the edge of the mattress support.

7) Snap together the remaining cord covers that will run along the floor.

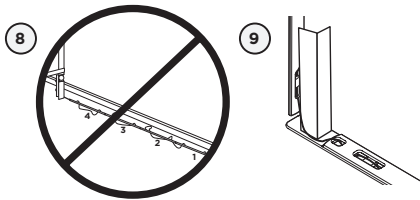
• The Sensor Pad functions with any size and type of mattress except memory-foam mattresses and hollow frame mattresses.

• The hardboard maintains a constant pressure on the Sensor Pad, enabling it to detect the baby's movements even when the baby is at the edges of the crib.



8) Remove any cord slack to make sure no parts of the cord are loose.

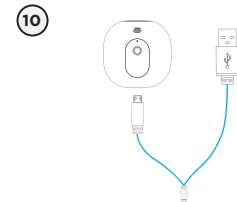
9) Peel off the double-sided tape on the 4th cord cover and place it securely under the crib leg.



10) Install the Nursery Unit on a flat, stable surface facing the crib at a distance of at least 1 meter and plug the Sensor Pad cord into the Nursery Unit.

11) Check to make sure the Sensor Pad has not moved from position.

12) Place the mattress back inside the crib.



⚠ WARNING

STRANGULATION HAZARD

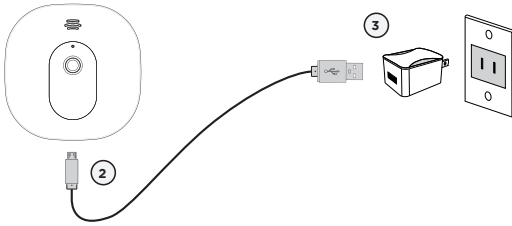
- Remove all slack from Sensor Pad Cord.
- When lowering the mattress support as your child grows, slide the vertical Cord Cover (5) upward so it remains approximately in the center between the mattress support and the floor. Slide the Sensor Pad Cord through the Floor Cover to eliminate any additional slack.

- The Sensor Pad is not designed for use with adults, children or infants older than 24 months.
- Discontinue used of the Sensor Pad when child is older than 24 months. Remove Sensor Pad from crib and store for future use.
- **BEFORE FIRST TIME USE:** To test that the unit is ready for use, refer to instruction manual on how to test that the installation has been done correctly.



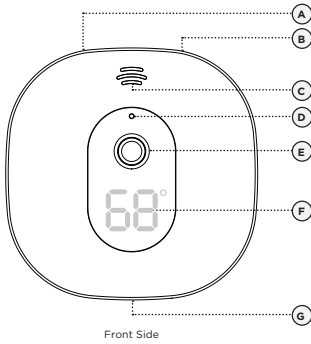


STEP 3 - SETTING UP THE CAMERA



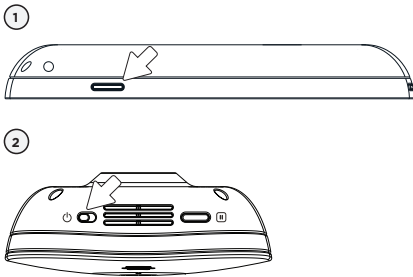
- 1) Place the Camera at a **minimum of 1 meter / 3 feet** away from the crib.
- 2) Connect the USB plug to the Camera.
- 3) Connect the USB plug with the power adapter and then with an electrical outlet.
- 4) Adjust the camera using the magnetic mount to get the best view of baby in the crib.

3.1 - CAMERA

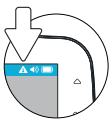


- A) **POWER ON/OFF**
- B) Pause Sensor Pad
- C) Speaker
- D) Microphone
- E) Camera
- F) Room temperature display
- G) Micro USB charging port

TURNING ON YOUR MONITOR



- 1) Press and hold the Parent Unit **ON/OFF** button for 2 seconds until LCD screen is turned **ON**. Angelcare's logo will be shown for 1 second.
- 2) Slide the Camera **ON/OFF** switch to the **ON** position
- 3) The Parent Unit will display **Video** mode screen.



When Parent Unit is turned **ON** and Camera is **OFF**, Parent Unit will display **Disconnected** mode.



If there is a lost connection between the 2 units after 15 seconds, the **Out-of-Range** alarm will sound on the Parent Unit (refer to troubleshooting):

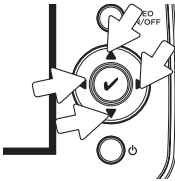
- The **Out-of-Range** icon will appear on the screen.
- The **Lost Connection** icon will appear on the info bar.

INDICATION BAR IMPORTANT ICONS



- 23°C** **Temperature icon:** Indicates room temperature
- Temperature Alarm icon:** Indicates Temperature Alarm is active
- Pendulum icon:** Indicates the Movement Sensor is active
- Night View Mode icon:** Night View Mode
- Sound icon:** Indicates that Sound function is active
- Connection icon:** Indicates the connection quality between the Parent Unit and the Nursery Unit.
- Good connection Poor connection Lost connection Out-of-Range
- Battery Level icon:** Indicates battery level
- Empty 1/3 Full 2/3 Full Full

STEP 5 - TESTING AND GETTING TO KNOW YOUR MONITOR



The Angelcare® monitor can be used with the pre-program factory settings or you can also customize your settings to your preference. Main menu on the LCD display shows the different operation settings. Use the direction keys to change or check the different functions on the Parent Unit.

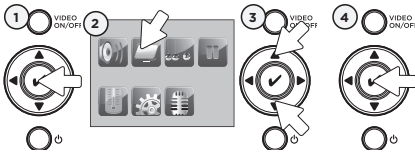
Press the **Menu/Select** button to select an icon. The light icon will change from blue to green to show that the icon is selected. Press **VIDEO ON/OFF** button to exit or to go back to main menu when in sub-menu.

IMPORTANT

When in menu or sub-menu modes, sound transmission between Parent and Nursery Units will be temporarily deactivated. ONLY movement-detection alarm will remain active (if function is activated).

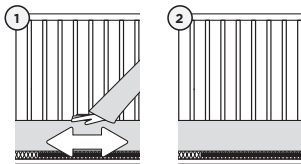
5.1 - SENSOR PAD

TO ACTIVATE THE SENSOR PAD:



- 1) Press **Menu/Select** button to access main menu.
- 2) Select the **Movement** icon.
- 3) Use the up and down arrows to **activate** or **deactivate** the **Movement Alarm**.
- 4) Press **Menu/Select** button to confirm.

TO TEST THE SENSOR PAD:



- 1) Move your hand lightly on the mattress.
 The **Pendulum** icon will appear on Parent Unit indicator bar.
- 2) Remove your hand from the mattress. After 15 seconds you will hear a '**TIC**' pre-alarm sound, and 5 seconds later the **Movement Alarm** will trigger.

MOVEMENT ALARM

- Alarm activates when no movement is detected by the Sensor Pad for 20 seconds.
- Both the Parent Unit and the Nursery Unit speakers will emit loud warning sound.
- **Movement Alarm** icon will show on the LCD screen.

IF THE ALARM DOES NOT SOUND

- Avoid contact with the crib while Sensor Pad is in operation.
- Place the crib near a supporting wall.
- Adjust the Sensor Pad sensitivity level.
- Turn **OFF** crib mobile, fans, loud music or anything else that may cause vibration.



TO STOP THE ALARM

On the Parent Unit, press any key to stop the alarm.

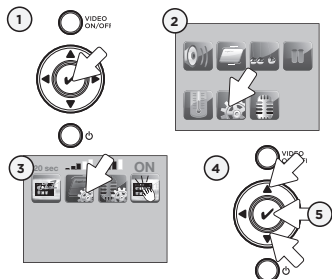
OR

Press the **Pager/Hold** button on the Nursery Unit.



EN

TO ADJUST THE SENSOR PAD SENSITIVITY LEVEL:



- 1) Press **Menu/Select** button to access main menu.
- 2) Select the **Settings** icon to access sub-menu.
- 3) Select the **Movement Sensitivity** icon.
- 4) Use the up and down arrows to choose the desired sensitivity level (1 to 5).

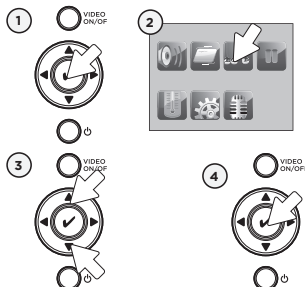


- 5) Press **Menu/Select** button to confirm.

NOTE: If you are receiving false alarms, adjust the sensitivity level.

TO ACTIVATE THE TIC FUNCTION:

Allows you to hear a **TIC** sound when Sensor Pad function is activated.



- 1) Press **Menu/Select** button to access the main menu.
- 2) Select the **TIC** icon.
- 3) Use the up and down arrows to **activate** or **deactivate** the **TIC** function.
- 4) Press **Menu/Select** button to confirm.

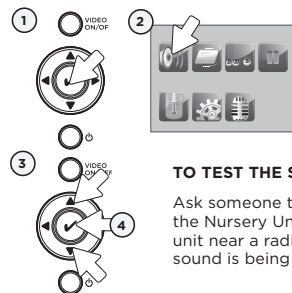
Regular **TIC** sound will emit from Parent Unit.

IMPORTANT

- The Sensor Pad is not designed for use with adults, children or infants older than 24 months.
- Once you are finished using the Sensor Pad, deactivate the movement function and please remove it from the baby's crib and store it away.

5.2 - SOUND

TO ACTIVATE SOUND:



TO TEST THE SOUND:

Ask someone to speak into the Nursery Unit or place the unit near a radio to ensure that sound is being picked up.

- 1) Press **Menu/Select** button to access main menu.
- 2) Select the **Sound** icon.
- 3) Use the up and down arrows to **activate** or **deactivate** the sound.
- 4) Press **Menu/Select** button to confirm.

IF YOU HEAR NO SOUND:

- Check that both units are powered **ON**.
- Check that both units are plugged into functioning electrical outlets.
- Check the batteries in both units (replace or recharge them if necessary).
- Bring the Parent Unit closer to the Nursery Unit.

IMPORTANT

To avoid feedback (whistling), keep both units at least 3 meters apart.

ADJUST SOUND LEVEL



Increase volume
(Up arrow)

Lower volume
(Down arrow)

PUT IN SILENT/MUTE MODE



Press the down arrow for 2 seconds to mute sound. **Mute** icon will flash. Press again for 2 seconds to reactivate sound.

5.3 - BATTERIES

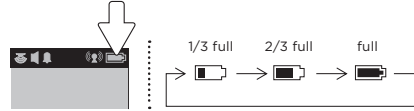
HOW TO CHECK THE BATTERIES:

Unplug the adapters from both units.

- If the green light on the Nursery Unit does not show, replace the batteries.
- If the Parent Unit and its screen do not light up, recharge the batteries.

HOW TO CHARGE THE BATTERIES IN THE PARENT UNIT:

Leave the Parent Unit plugged to fully charge the unit. Although the batteries at 1/3 capacity works normally, we recommend that you fully recharge them.



PARENT UNIT BATTERY ALARM

- Alarm activates when the batteries need to be recharged.
- Parent Unit will emit a beep sound every 15 seconds.
- **Battery Alarm** icon will show on LCD screen.

YOU ARE NOW READY TO USE YOUR MONITOR

The Angelcare® monitor can be used with the pre-program factory settings or you can also customise your settings to your preference.

DEFAULT SETTINGS



Sound Mode: ON
Speaker Volume: Level 3 (of 6)



Movement Mode: ON
Sensor Pad Sensitivity: Level 3 (of 5)
TIC: ON



Temperature Unit: Celsius
Temperature Alarm: OFF



VOX: ON
VOX Level: Level 2 (of 4)



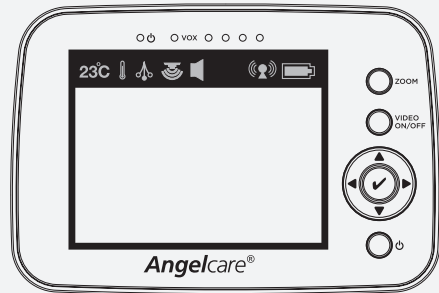
Screen Saver Timer: ON
(after 3 minutes)



LCD Brightness: Level 3 (of 5)



Key Tone: ON



IMPORTANT

- Test your monitor before first use.
- Test your monitor regularly to ensure it is functioning correctly.
- Test your monitor every time you move the Sensor Pad to a different place.



STEP 6 - ACTIVATING AND DEACTIVATING ADDITIONAL FUNCTIONS

IMPORTANT

When in the menu or sub-menu modes, sound transmission between Parent and Nursery Units will be temporarily deactivated. ONLY the movement detection alarm will remain active (if function is activated).

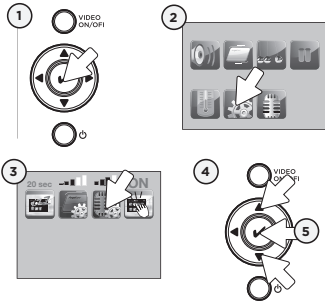
6.1 - SOUND TRANSMISSION (VOX)

Your monitor is 'Sound Activated'. This means that it will transmit sounds only when it detects them. It will detect even the softest levels of crying.

To save power, after 10 seconds, the sound transmission will stop if no sound is detected. Once sound is detected transmission will automatically activate.

TO ADJUST THE SOUND SENSITIVITY (VOX):

Allows you to determine the sound level needed to trigger sound transmission to the Parent Unit. This means that sound will only transmit based on the level that you set.



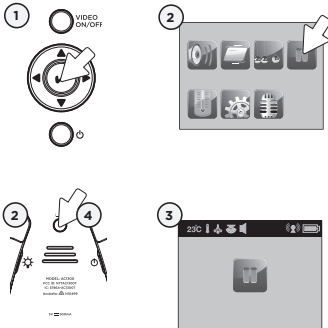
- 1) Press **Menu/Select** button to access the main menu.
- 2) Select the **Settings** icon to access sub-menu.
- 3) Select the **VOX Sensitivity** icon.
- 4) Use the up and down arrows to choose the desired sensitivity level (1 to 4)



- 5) Press **Menu/Select** button to confirm.

6.2 - HOLD

Allows you to put your monitor on hold.



- 1) Press **Menu/Select** button to access main menu.
- 2) Select the **Hold** icon.
OR
Press and hold the Nursery Unit **Pager/Hold** button for at least 2 seconds.
- 3) **Hold** icon will appear on the screen.
- 4) Press and hold the Nursery Unit **Pager/Hold** again to return to deactivate **Hold**.



Nursery Unit **Night Light** will blink. Parent Unit will emit 3 consecutive beeps every 30 seconds to remind you that monitor is on **Hold**.

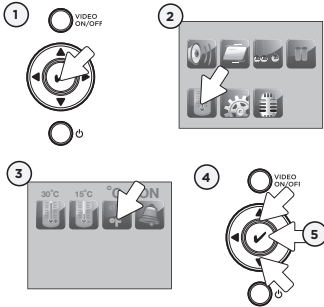
IMPORTANT

When your monitor is on **Hold**, the movement-detection feature and movement alarm are disabled.





6.3 - THERMOMETER

TO CHANGE THE MEASUREMENT UNIT:

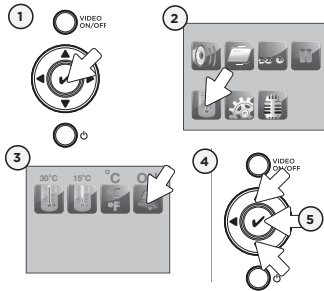


- 1) Press **Menu/Select** button to access main menu.
- 2) Select the **Temperature** icon to access sub-menu.
- 3) Select the **°C °F** icon.
- 4) Use the up and down arrows to change from **Celsius** to **Fahrenheit**.



 Celsius


 Fahrenheit
- 5) Press **Menu/Select** button to confirm.

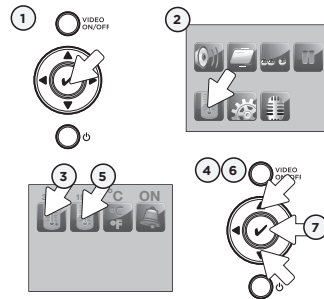
TO ACTIVATE THE TEMPERATURE ALARM:



- 1) Press **Menu/Select** button to access main menu.
- 2) Select the **Temperature** icon to access sub-menu.
- 3) Select the **Temperature Alarm** icon.
- 4) Use the up and down arrows to **activate** or **deactivate** the **Temperature Alarm**.

 **Temperature Alarm icon:** Indicates temperature alarm is **ON**.
- 5) Press **Menu/Select** button to confirm.

TO SET THE TEMPERATURE RANGE:



- 1) Press **Menu/Select** button to access main menu.
- 2) Select the **Temperature** icon to access sub-menu.
- 3) Select the **High Temperature** icon to set **maximum** temperature range (15 to 32 °Celsius/59 to 90 °Fahrenheit).
- 4) Use the up and down arrows to set the highest temperature preferred.
- 5) Select the **Low Temperature** icon to set **minimum** temperature range (5 to 20 °Celsius/41 to 68 °Fahrenheit).
- 6) Use the up and down arrows to set the lowest temperature preferred.
- 7) Press **Menu/Select** button to confirm.

The range between the minimum and maximum temperature must be at least 4 °C/7 °F. An error tone will be heard if you try to set it up below this minimum level.



TEMPERATURE ALARM

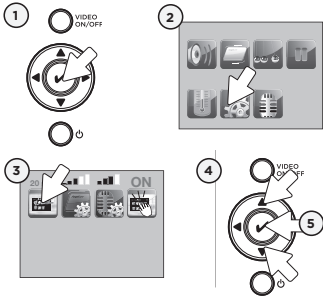
- Alarm activates when temperature reaches maximum or minimum set temperature.
- Parent Unit will emit 4 consecutive beeps, every 5 seconds.
- **Temperature Alarm** icon will show on LCD screen.





6.4 - SCREEN SAVER

Allows you to set the screen saver starting point.



MANUAL SETTING:

To manually activate the **Screen Saver** mode press and hold the Parent Unit **VIDEO ON/OFF** button.

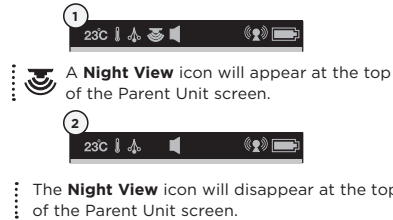
- 1) Press **Menu/Select** button to access main menu.
- 2) Select the **Settings** icon to access sub-menu.
- 3) Select the **Screen Saver** icon.
- 4) Use the up and down arrows to select timed delay before **Video** mode turns into **Screen Saver** mode.
- 5) Press **Menu/Select** button to confirm.

NOTE:

The LCD screen will turn black when video is in **Screen Saver** mode. Press any button to return to **Video** mode.

6.5 - INFRARED NIGHT VISION

Allows you to capture image when lighting is insufficient.



- 1) The infrared LEDs will turn **ON** automatically when the lighting is not sufficient, to give a night view on LCD display.

NOTE:

When the **Infrared Night Vision** is **ON**, only black and white image will be displayed on the LCD screen.

- 2) If the light is bright enough in the room, the infrared LED on the Nursery Unit will turn **OFF** automatically.

6.6 - NIGHT LIGHT

Allows you to use your monitor as a night light.

TO ACTIVATE THE LIGHT:

Push the button on the back of the right "wing" to turn the **Night Light ON** or **OFF**.



6.7 - PAGER

Allows you to locate the Parent Unit.

TO LOCATE PARENT UNIT:

Press the **Pager/Hold** button for no more than 2 seconds. The Parent Unit will emit a paging sound for one minute.



IMPORTANT

If you press the **Pager/Hold** button on the back of the Nursery Unit for more than 2 seconds, you will put the movement monitoring on **Hold**. To unhold, push the button again.

TO STOP THE PAGING SOUND:



Press any button on the Parent Unit.

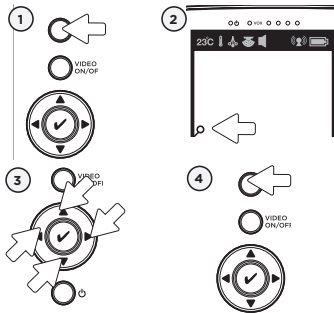
OR

Press the Nursery Unit's **Pager/Hold** button



6.8 - ZOOM MODE

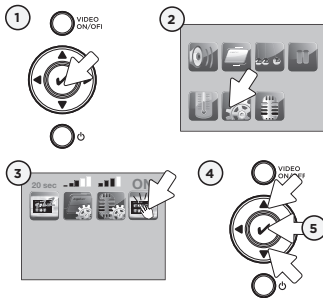
Allows you to zoom in to twice the normal view.



- 1) Press and release the **Zoom** button on the Parent Unit.
- 2) The **Zoom** icon will appear at the bottom left corner of the screen.
- 3) Use the **arrow keys** to zoom in on what you want to see more closely.
- 4) Press and release the **Zoom** button on the Parent Unit again to return to normal view.

6.9 - KEY TONE

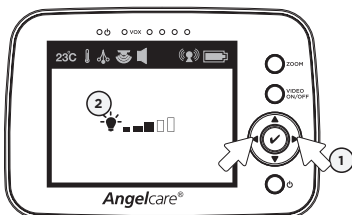
Allows you to activate or deactivate key tone sound.



- 1) Press **Menu/Select** button to access main menu.
- 2) Select the **Settings** icon to access sub-menu.
- 3) Select the **Key Tone** icon.
- 4) Use the up and down arrows to **activate** or **deactivate Key Tone** sound.
- 5) Press **Menu/Select** button to confirm.

6.10 - LCD SCREEN BRIGHTNESS

Allows you to adjust the LCD screen brightness on the Parent Unit.



- 1) Use the left and right arrows to adjust the screen brightness level (1 to 5).
- 2) A light bulb will be shown on the LCD screen.



TROUBLESHOOTING

TAKING CARE OF YOUR RECHARGEABLE BATTERIES

- Ensure that you fully charge your batteries for 9 hours before their first use.
- To maintain maximum battery life it is recommended that you fully discharge your batteries periodically. If your Parent Unit is not in use, please turn it **OFF**.

FALSE ALARMS

- Turn **OFF** the Nursery Unit.
- Verify the connection between the Sensor Pad and the Nursery Unit. Unplug and reconnect the cord.
- Make sure there is no bedding between the mattress and the Sensor Pad.
- If the crib has a spring or slat base, place a hardboard between the crib base and the Sensor Pad measuring at least 33 x 33 cm and 6 mm thick.
- Make sure the Sensor Pad is positioned as described under the setup requirements. Sensitivity may need to be adjusted, refer to **Step 5.1**.

ALARM WILL NOT SOUND

- Avoid contact with the crib when the monitor is **ON**.
- Place crib near a solid supporting wall to avoid Sensor Pad from detecting movement from outside the crib.
- You may need to decrease the sensitivity, refer to **Step 5.1**.

NO SOUND IS BEING TRANSMITTED

- Bring the Parent Unit closer to the Nursery Unit.
- Recharge the Parent Unit.
- Check connections or change to another electrical outlet.
- Ensure both units are **ON**.
- Ensure mains supply units are activated.
- Check on the top bar of the Parent Unit to see if the monitor is on **MUTE** instead of **ON**. Refer to **Step 5.2**.

NURSERY UNIT POWER ON INDICATOR (GREEN LIGHT) DOES NOT LIGHT UP

- Check connections or change to another electrical outlet.
- Push and hold the button on the back of the **left 'wing'** for 2 seconds to turn the Nursery Unit **ON**.

WEAK RECEPTION

- Bring units closer together.
- Change the position of one or both units.
- Place units on a flat surface away from baby's reach.
- Recharge the Parent Unit.

STATIC, DISTORTION, INTERFERENCES (FROM OTHER MONITORS, WIRELESS PHONES, WALKIE-TALKIES, ETC.)

- Rotate Parent Unit or move it away from source of interference.

FEEDBACK (LOUD NOISES EMITTED FROM THE PARENT UNIT)

- Move units farther apart (at least 3 meters).
- Decrease volume on Parent Unit.

THE PARENT UNIT SCREEN IS BLACK (PARENT UNIT IS OFF)

- Turn the Parent Unit back **ON** by pushing and holding the **POWER ON/OFF** button for 2 seconds.
- Recharge the Parent Unit.





LIMITED WARRANTY

Angelcare® warrants to the original owner of this product that Angelcare® video, movement and sound monitor (model AC215) is free from any material and workmanship defects, for a period of one (1) year from the date of the original purchase. If this monitoring system fails to function properly when used as directed under normal conditions within the one year period, Angelcare® will either repair or replace the product, at our discretion, free of charge. Please contact your distributor.

The product must be accompanied by a proof of purchase, either a bill of sale or other proof that the monitoring system is within the warranty period. Angelcare® will bear the cost of repairing or replacing the product and shipping it back to you.

This warranty does not apply to a product which has been damaged as a result of improper maintenance, an accident, improper voltage supply or any other form of misuse. The warranty is also void if the owner repairs or modifies the product in any way. Angelcare® is not liable for any incidental or consequential damages with regard to this product. The warranty also excludes any liability other than what is stated above. No other warranty is given.

This warranty does not cover products and accessories which are not Angelcare-branded, or any problems that result from usage that is not in accordance with product instructions, failure to follow the product instructions, or problems caused by using accessories, parts or components not supplied by Angelcare.

LEGAL RIGHTS VARY FROM COUNTRY TO COUNTRY. SOME COUNTRIES DO NOT ALLOW THE EXCLUSION OR LIMITATION OF INCIDENTAL OR CONSEQUENTIAL DAMAGES, SO THE ABOVE LIMITATIONS MAY NOT APPLY TO YOU.

WE ARE NOT IN ANY WAY RESPONSIBLE FOR ANY OUTCOME RESULTING FROM THE USE OF THIS PRODUCT.

IMPORTANT! This Angelcare® monitor is a personal care product. Please do not return this product to the store. If you have questions or need help, please call your distributor before returning this product.

TECHNICAL SPECIFICATIONS

Range:

Open field (Open area without obstructions): up to 250 meters.

Number of Channels:

USA/Canada: 19 channels.
Europe: 64 channels.

Power Supply:

1 included Li-Ion battery (parent unit)
100 - 240 VAC / 5 VDC adapter for the parent unit
100 - 240 VAC / 5 VDC adapter for the camera

Caution: To reduce the risk of electric shock, do not expose this product to rain or moisture.

Danger of explosion if batteries are incorrectly replaced. The battery included for the Parent Unit is a user replaceable Li-ion rechargeable battery, manufactured by SPRINGPOWER TECHNOLOGY (SHENZHEN) COMPANY LIMITED. Only use the Angelcare recommended replacement battery. To obtain information on replacement batteries please contact Angelcare customer service: www.angelcarebaby.com or contact your local distributor. Instructions will be included with the replacement battery. Dispose of exhausted batteries properly according to your local ordinances. Keep all batteries away from children.



PROTECT THE ENVIRONMENT

This electronic equipment contains reusable material and must not be disposed with domestic waste. Please take it to a collecting point for electric and electronic equipment (ask your local authorities for details).

Batteries:

- DO NOT mix old and new batteries.
- DO NOT mix alkaline standard (carbon-zinc), or rechargeable (NI-CD, NIMH, etc.) batteries.
- Parent unit Li-ion battery information:
Model: SP454543
Rating: 3.7V, 1000mAh

Transmission:

Data transmission between the Parent Unit and the Nursery Unit is made on the 2.4GHz frequency.

Hereby, Angelcare Monitors Inc., declares this baby monitor is in compliance with the essential requirements and other relevant provisions of Directive 2014/53/EU.

The EU declaration of conformity can be obtained at: www.angelcarebaby.com.





www.angelcarebaby.com



IN215-INT-022817