

System Check_B750_170504

DUT: Dipole 750 MHz; Type: D750V3; SN: 1013

Communication System: CW; Frequency: 750 MHz; Duty Cycle: 1:1

Medium: B06T09N1_0504 Medium parameters used: $f = 750 \text{ MHz}$; $\sigma = 0.959 \text{ S/m}$; $\epsilon_r = 55.52$; $\rho = 1000 \text{ kg/m}^3$

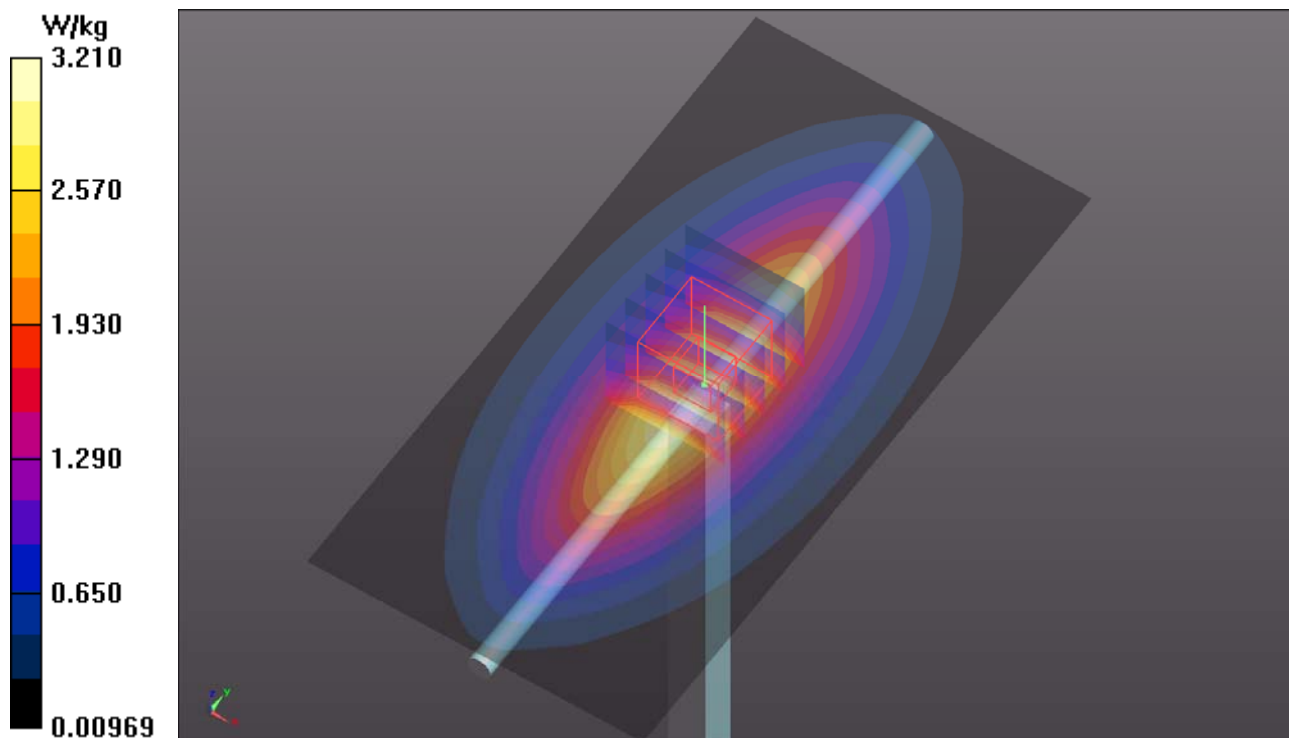
Ambient Temperature : 23.7 °C ; Liquid Temperature : 23.3 °C

DASY5 Configuration:

- Probe: EX3DV4 - SN3650; ConvF(9.61, 9.61, 9.61); Calibrated: 2016/07/25;
- Sensor-Surface: 1.4mm (Mechanical Surface Detection)
- Electronics: DAE4 Sn917; Calibrated: 2017/01/06
- Phantom: ELI Phantom_1206; Type: QDOVA;
- Measurement SW: DASY52, Version 52.8 (8); SEMCAD X Version 14.6.10 (7373)

Pin=250mW/Area Scan (61x121x1): Interpolated grid: $dx=1.500 \text{ mm}$, $dy=1.500 \text{ mm}$
Maximum value of SAR (interpolated) = 3.21 W/kg

Pin=250mW/Zoom Scan (5x5x7)/Cube 0: Measurement grid: $dx=8\text{mm}$, $dy=8\text{mm}$, $dz=5\text{mm}$
Reference Value = 60.85 V/m; Power Drift = -0.13 dB
Peak SAR (extrapolated) = 3.57 W/kg
SAR(1 g) = 2.35 W/kg; SAR(10 g) = 1.56 W/kg
Maximum value of SAR (measured) = 3.18 W/kg



System Check_B835_170504

DUT: Dipole 835 MHz; Type: D835V2; SN: 4d121

Communication System: CW; Frequency: 835 MHz; Duty Cycle: 1:1

Medium: B07T10N3_0504 Medium parameters used: $f = 835 \text{ MHz}$; $\sigma = 0.989 \text{ S/m}$; $\epsilon_r = 56.78$; $\rho = 1000 \text{ kg/m}^3$

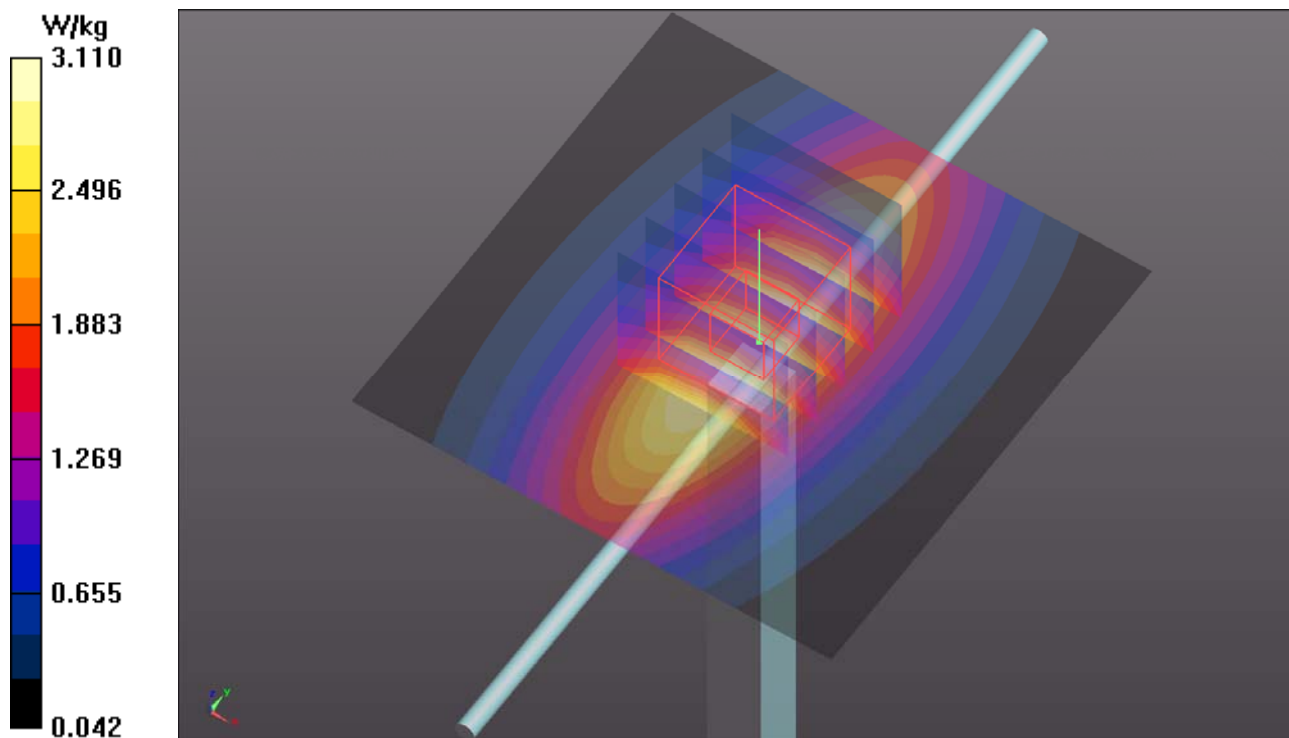
Ambient Temperature : 23.7 °C ; Liquid Temperature : 23.3 °C

DASY5 Configuration:

- Probe: EX3DV4 - SN3650; ConvF(9.73, 9.73, 9.73); Calibrated: 2016/07/25;
- Sensor-Surface: 1.4mm (Mechanical Surface Detection)
- Electronics: DAE4 Sn917; Calibrated: 2017/01/06
- Phantom: ELI Phantom_1206; Type: QDOVA;
- Measurement SW: DASY52, Version 52.8 (8); SEMCAD X Version 14.6.10 (7373)

Pin=250mW/Area Scan (61x61x1): Interpolated grid: $dx=1.500 \text{ mm}$, $dy=1.500 \text{ mm}$
Maximum value of SAR (interpolated) = 3.11 W/kg

Pin=250mW/Zoom Scan (5x5x7)/Cube 0: Measurement grid: $dx=8\text{mm}$, $dy=8\text{mm}$, $dz=5\text{mm}$
Reference Value = 58.49 V/m; Power Drift = -0.08 dB
Peak SAR (extrapolated) = 3.51 W/kg
SAR(1 g) = 2.33 W/kg; SAR(10 g) = 1.53 W/kg
Maximum value of SAR (measured) = 3.11 W/kg



System Check_B1750_170514

DUT: Dipole 1750 MHz; Type: D1750V2; SN: 1055

Communication System: CW; Frequency: 1750 MHz; Duty Cycle: 1:1

Medium: B16T20N1_0514 Medium parameters used: $f = 1750$ MHz; $\sigma = 1.44$ S/m; $\epsilon_r = 51.715$; $\rho = 1000$ kg/m³

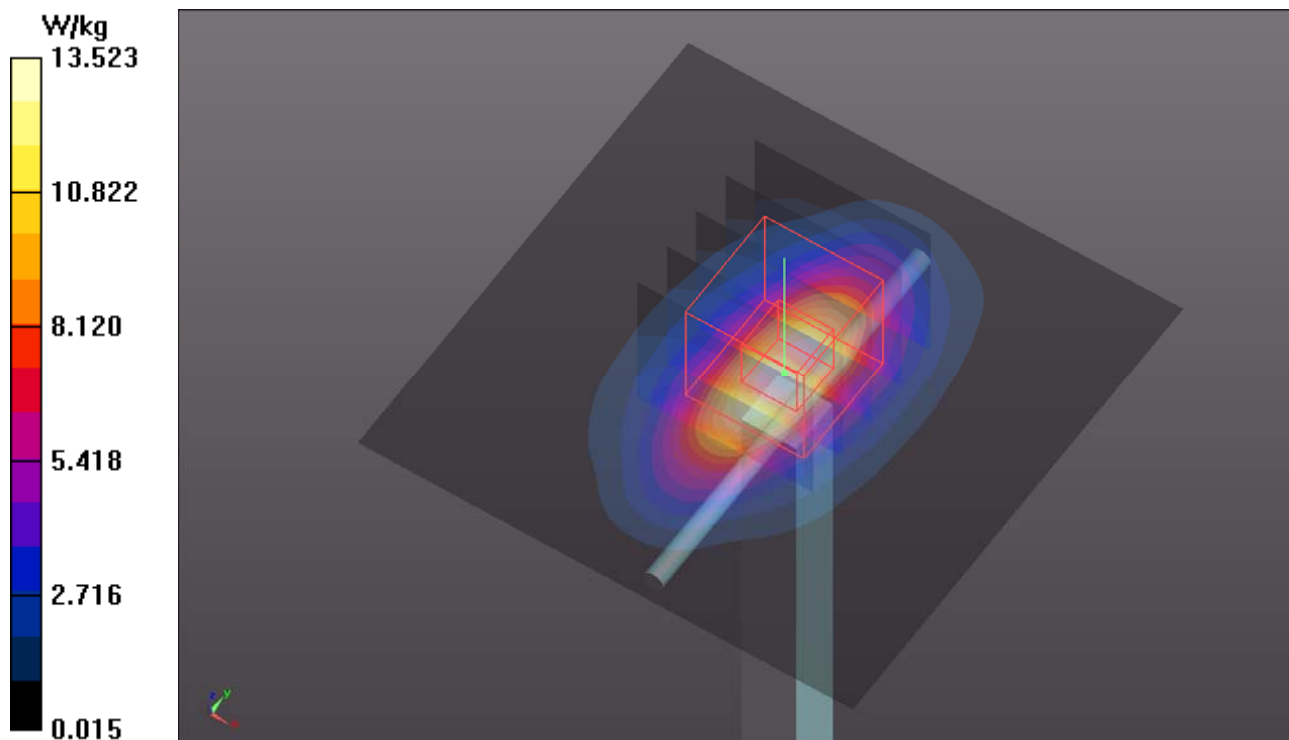
Ambient Temperature : 23.8 °C ; Liquid Temperature : 23.4 °C

DASY5 Configuration:

- Probe: EX3DV4 - SN3864; ConvF(8.43, 8.43, 8.43); Calibrated: 2016/07/25;
- Sensor-Surface: 1.4mm (Mechanical Surface Detection)
- Electronics: DAE3 Sn579; Calibrated: 2016/09/05
- Phantom: ELI Phantom_1245; Type: QDOVA;
- Measurement SW: DASY52, Version 52.8 (8); SEMCAD X Version 14.6.10 (7373)

Pin=250mW/Area Scan (61x61x1): Interpolated grid: dx=1.500 mm, dy=1.500 mm
Maximum value of SAR (interpolated) = 13.5 W/kg

Pin=250mW/Zoom Scan (5x5x7)/Cube 0: Measurement grid: dx=8mm, dy=8mm, dz=5mm
Reference Value = 99.85 V/m; Power Drift = -0.02 dB
Peak SAR (extrapolated) = 15.8 W/kg
SAR(1 g) = 8.91 W/kg; SAR(10 g) = 4.78 W/kg
Maximum value of SAR (measured) = 13.5 W/kg



System Check_B1900_170511

DUT: Dipole 1900 MHz; Type: D1900V2; SN: 5d036

Communication System: CW; Frequency: 1900 MHz; Duty Cycle: 1:1

Medium: B16T20N2_0511 Medium parameters used: $f = 1900$ MHz; $\sigma = 1.553$ S/m; $\epsilon_r = 51.806$; $\rho = 1000$ kg/m³

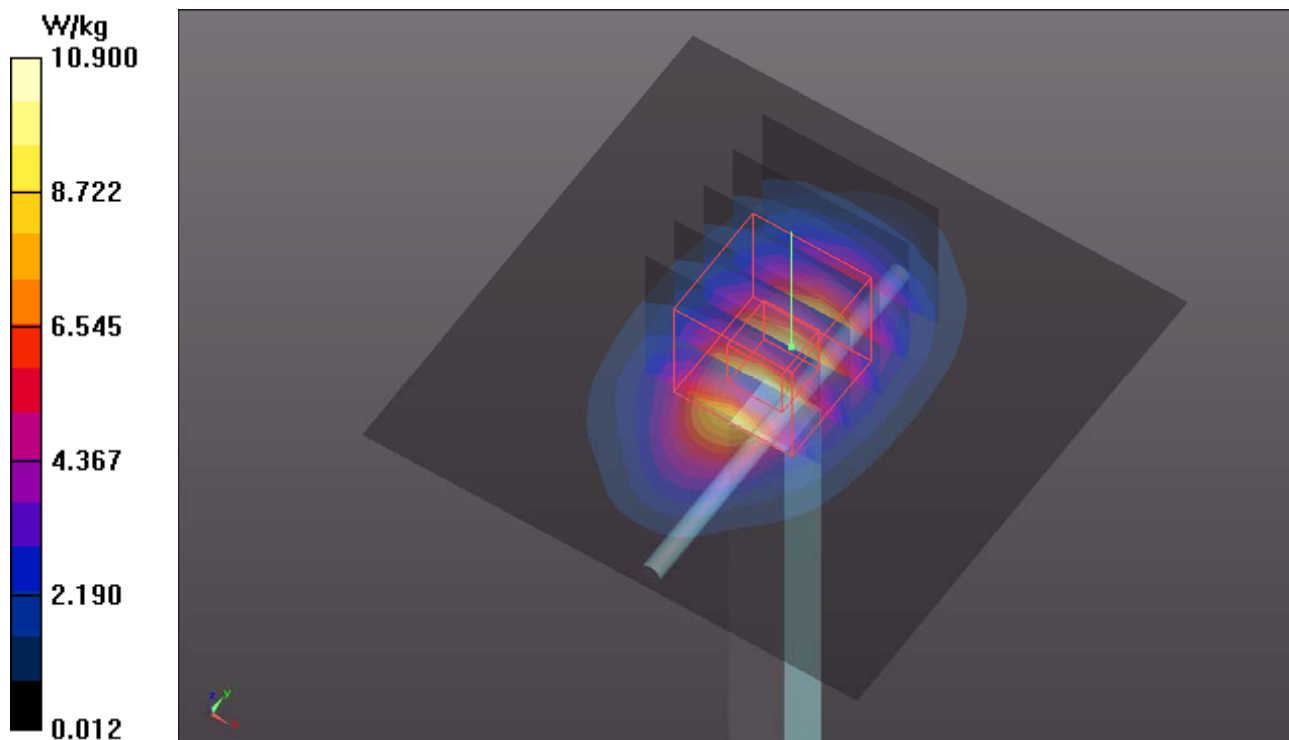
Ambient Temperature : 23.5 °C ; Liquid Temperature : 23.2 °C

DASY5 Configuration:

- Probe: ET3DV6 - SN1790; ConvF(4.74, 4.74, 4.74); Calibrated: 2016/06/24;
- Sensor-Surface: 4mm (Mechanical Surface Detection)
- Electronics: DAE3 Sn579; Calibrated: 2016/09/05
- Phantom: ELI Phantom_1245; Type: QDOVA;
- Measurement SW: DASY52, Version 52.8 (8); SEMCAD X Version 14.6.10 (7373)

Pin=250mW/Area Scan (61x61x1): Interpolated grid: dx=1.500 mm, dy=1.500 mm
Maximum value of SAR (interpolated) = 10.9 W/kg

Pin=250mW/Zoom Scan (5x5x7)/Cube 0: Measurement grid: dx=8mm, dy=8mm, dz=5mm
Reference Value = 90.86 V/m; Power Drift = -0.05 dB
Peak SAR (extrapolated) = 15.3 W/kg
SAR(1 g) = 9.49 W/kg; SAR(10 g) = 5.11 W/kg
Maximum value of SAR (measured) = 10.5 W/kg



System Check_B2600_170514

DUT: Dipole 2600 MHz; Type: D2600V2; SN: 1020

Communication System: CW; Frequency: 2600 MHz; Duty Cycle: 1:1

Medium: B19T27N5_0514 Medium parameters used: $f = 2600$ MHz; $\sigma = 2.19$ S/m; $\epsilon_r = 51.232$; $\rho = 1000$ kg/m³

Ambient Temperature : 23.7 °C ; Liquid Temperature : 23.2 °C

DASY5 Configuration:

- Probe: EX3DV4 - SN3864; ConvF(7.6, 7.6, 7.6); Calibrated: 2016/07/25;
- Sensor-Surface: 1.4mm (Mechanical Surface Detection)
- Electronics: DAE3 Sn579; Calibrated: 2016/09/05
- Phantom: ELI Phantom_1245; Type: QDOVA;
- Measurement SW: DASY52, Version 52.8 (8); SEMCAD X Version 14.6.10 (7373)

Pin=250mW/Area Scan (81x81x1): Interpolated grid: dx=1.200 mm, dy=1.200 mm
Maximum value of SAR (interpolated) = 23.1 W/kg

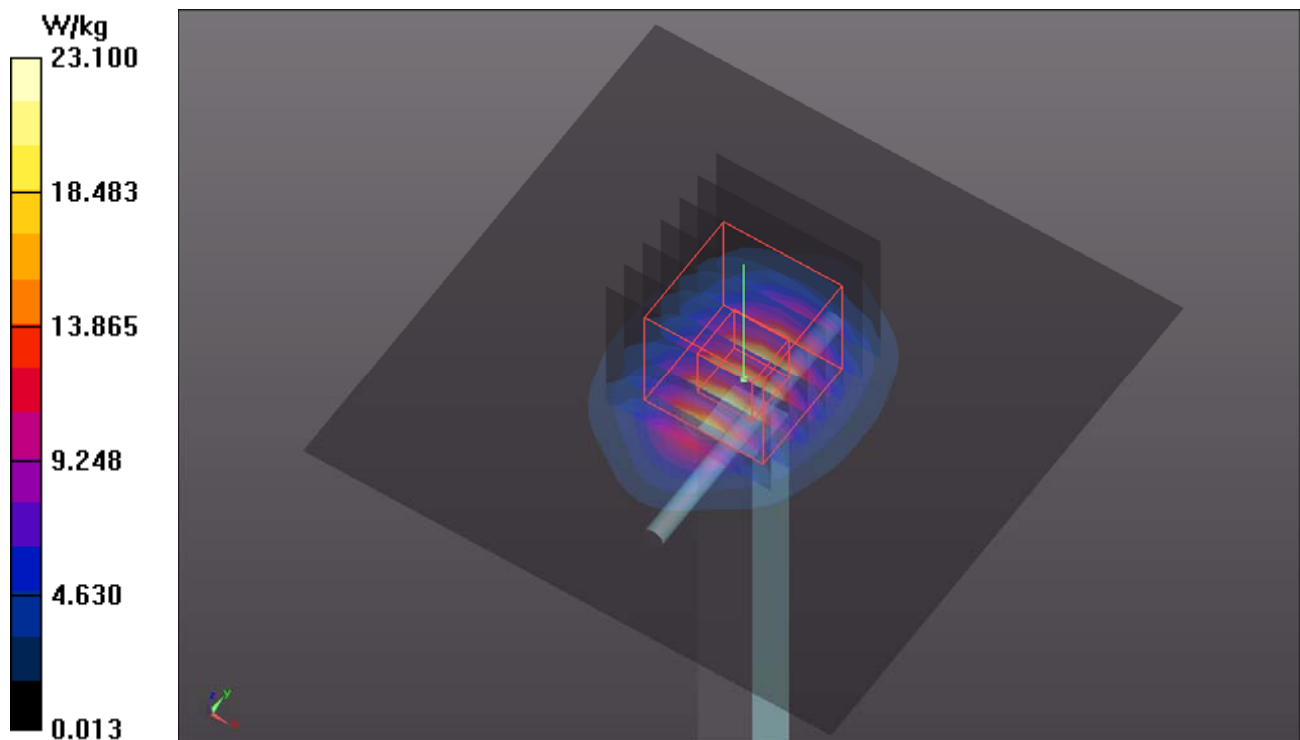
Pin=250mW/Zoom Scan (7x7x7)/Cube 0: Measurement grid: dx=5mm, dy=5mm, dz=5mm

Reference Value = 106.0 V/m; Power Drift = -0.02 dB

Peak SAR (extrapolated) = 28.9 W/kg

SAR(1 g) = 13.3 W/kg; SAR(10 g) = 5.89 W/kg

Maximum value of SAR (measured) = 22.9 W/kg



P01 WCDMA II_RMC12.2K_Rear Face_0cm_Ch9262_P-Sensor_w

DUT: 170109C47

Communication System: WCDMA; Frequency: 1852.4 MHz; Duty Cycle: 1:1

Medium: B16T20N2_0511 Medium parameters used: $f = 1852.4$ MHz; $\sigma = 1.536$ S/m; $\epsilon_r = 51.691$; ρ

$= 1000$ kg/m³

Ambient Temperature : 23.5 °C ; Liquid Temperature : 23.2 °C

DASY5 Configuration:

- Probe: ET3DV6 - SN1790; ConvF(4.74, 4.74, 4.74); Calibrated: 2016/06/24;
- Sensor-Surface: 4mm (Mechanical Surface Detection)
- Electronics: DAE3 Sn579; Calibrated: 2016/09/05
- Phantom: ELI Phantom_1245; Type: QDOVA;
- Measurement SW: DASY52, Version 52.8 (8); SEMCAD X Version 14.6.10 (7373)

- **Area Scan (151x201x1):** Interpolated grid: dx=1.500 mm, dy=1.500 mm

Maximum value of SAR (interpolated) = 1.07 W/kg

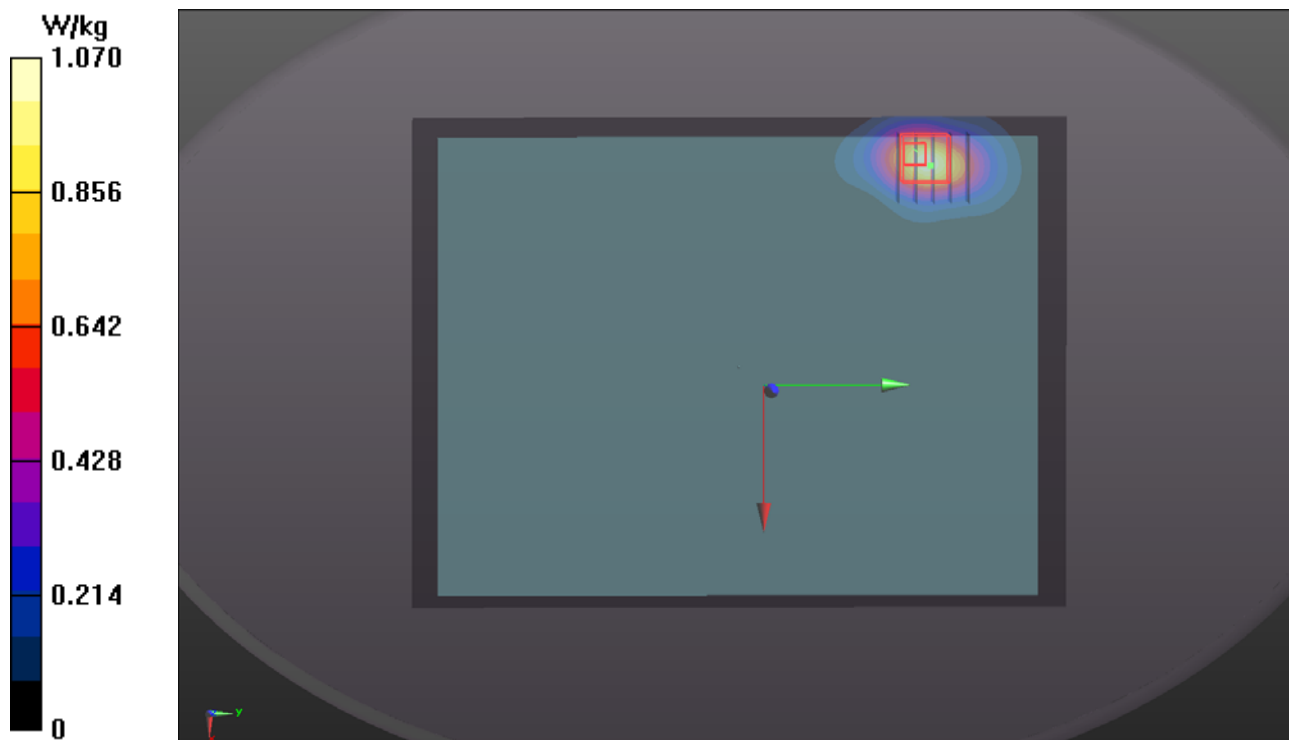
- **Zoom Scan (5x5x7)/Cube 0:** Measurement grid: dx=8mm, dy=8mm, dz=5mm

Reference Value = 23.70 V/m; Power Drift = 0.15 dB

Peak SAR (extrapolated) = 2.03 W/kg

SAR(1 g) = 1.11 W/kg; SAR(10 g) = 0.577 W/kg

Maximum value of SAR (measured) = 1.26 W/kg



P02 WCDMA IV_RMC12.2K_Rear Face_0cm_Ch1413_P-Sensor_w

DUT: 170109C47

Communication System: WCDMA; Frequency: 1732.6 MHz; Duty Cycle: 1:1

Medium: B16T20N2_0511 Medium parameters used: $f = 1733$ MHz; $\sigma = 1.432$ S/m; $\epsilon_r = 51.969$; $\rho = 1000$ kg/m³

Ambient Temperature : 23.5 °C ; Liquid Temperature : 23.2 °C

DASY5 Configuration:

- Probe: ET3DV6 - SN1790; ConvF(4.94, 4.94, 4.94); Calibrated: 2016/06/24;
- Sensor-Surface: 4mm (Mechanical Surface Detection)
- Electronics: DAE3 Sn579; Calibrated: 2016/09/05
- Phantom: ELI Phantom_1245; Type: QDOVA;
- Measurement SW: DASY52, Version 52.8 (8); SEMCAD X Version 14.6.10 (7373)

- **Area Scan (171x201x1):** Interpolated grid: dx=1.500 mm, dy=1.500 mm

Maximum value of SAR (interpolated) = 1.00 W/kg

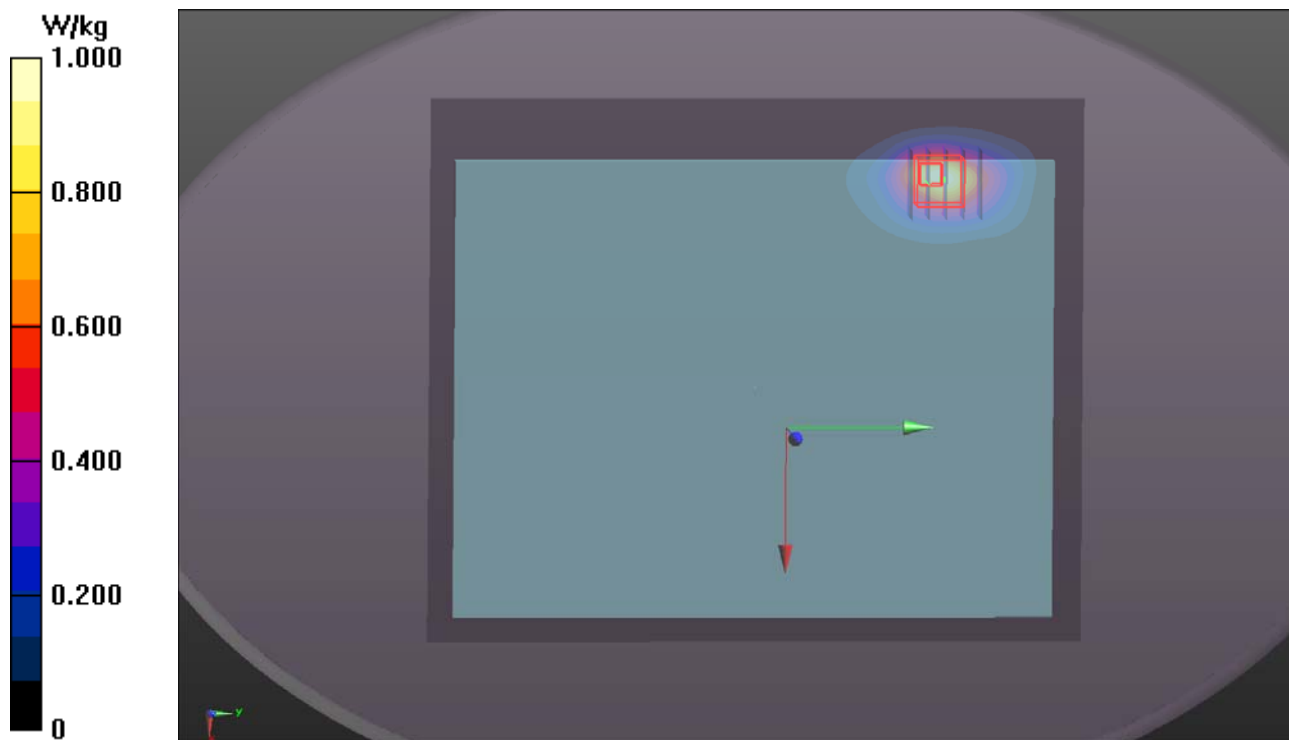
- **Zoom Scan (5x5x7)/Cube 0:** Measurement grid: dx=8mm, dy=8mm, dz=5mm

Reference Value = 18.61 V/m; Power Drift = -0.09 dB

Peak SAR (extrapolated) = 1.92 W/kg

SAR(1 g) = 0.997 W/kg; SAR(10 g) = 0.516 W/kg

Maximum value of SAR (measured) = 1.06 W/kg



P03 WCDMA V_RMC12.2K_Right Side_0cm_Ch4233_P-Sensor_w

DUT: 170109C47

Communication System: WCDMA; Frequency: 846.6 MHz; Duty Cycle: 1:1

Medium: B07T10N1_0509 Medium parameters used: $f = 847$ MHz; $\sigma = 0.997$ S/m; $\epsilon_r = 54.041$; $\rho = 1000$ kg/m³

Ambient Temperature : 23.7 °C ; Liquid Temperature : 23.3 °C

DASY5 Configuration:

- Probe: ET3DV6 - SN1790; ConvF(6.37, 6.37, 6.37); Calibrated: 2016/06/24;
- Sensor-Surface: 4mm (Mechanical Surface Detection)
- Electronics: DAE3 Sn579; Calibrated: 2016/09/05
- Phantom: ELI Phantom_1206; Type: QDOVA;
- Measurement SW: DASY52, Version 52.8 (8); SEMCAD X Version 14.6.10 (7373)

- **Area Scan (41x161x1):** Interpolated grid: dx=1.500 mm, dy=1.500 mm

Maximum value of SAR (interpolated) = 1.09 W/kg

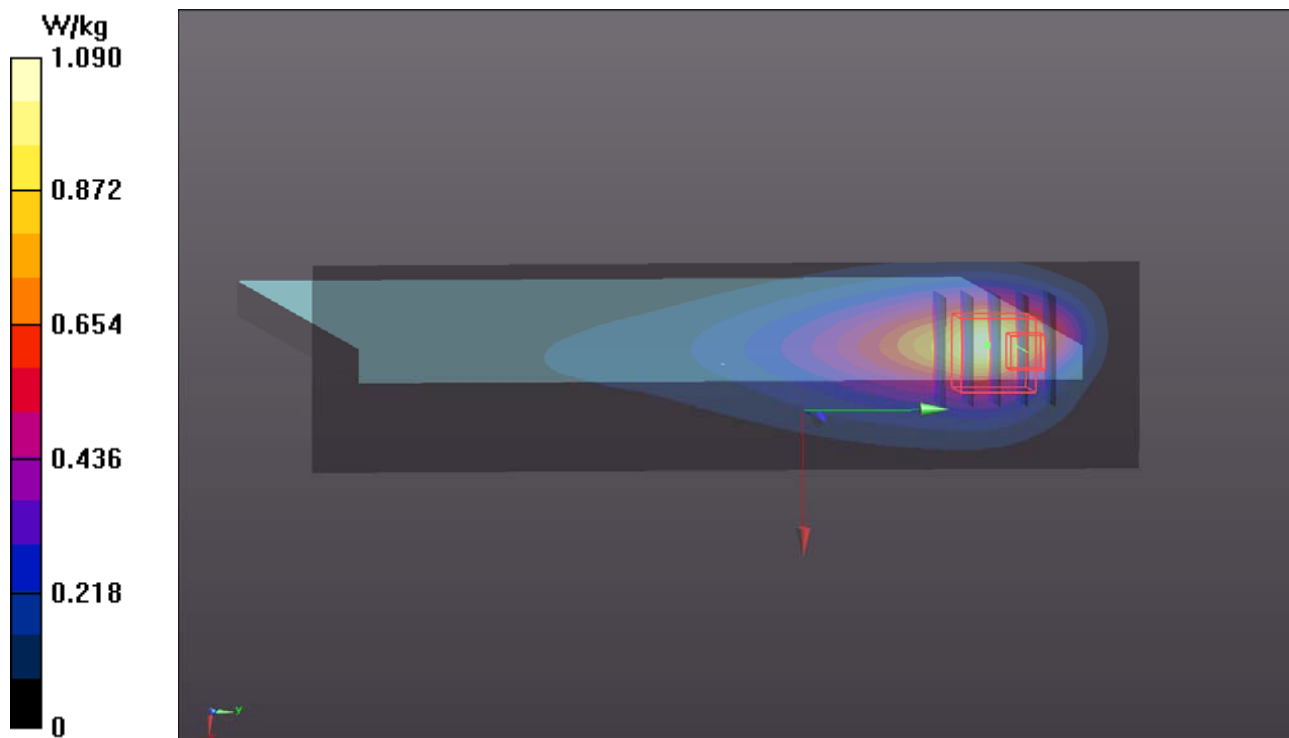
- **Zoom Scan (5x5x7)/Cube 0:** Measurement grid: dx=8mm, dy=8mm, dz=5mm

Reference Value = 31.94 V/m; Power Drift = -0.01 dB

Peak SAR (extrapolated) = 3.90 W/kg

SAR(1 g) = 1.12 W/kg; SAR(10 g) = 0.545 W/kg

Maximum value of SAR (measured) = 1.28 W/kg



P04 LTE 2_QPSK20M_Rear Face_0cm_Ch19100_P-Sensor_w_50RB_OS25

DUT: 170109C47

Communication System: LTE; Frequency: 1900 MHz; Duty Cycle: 1:1

Medium: B16T20N1_0514 Medium parameters used: $f = 1900$ MHz; $\sigma = 1.554$ S/m; $\epsilon_r = 51.475$; $\rho = 1000$ kg/m³

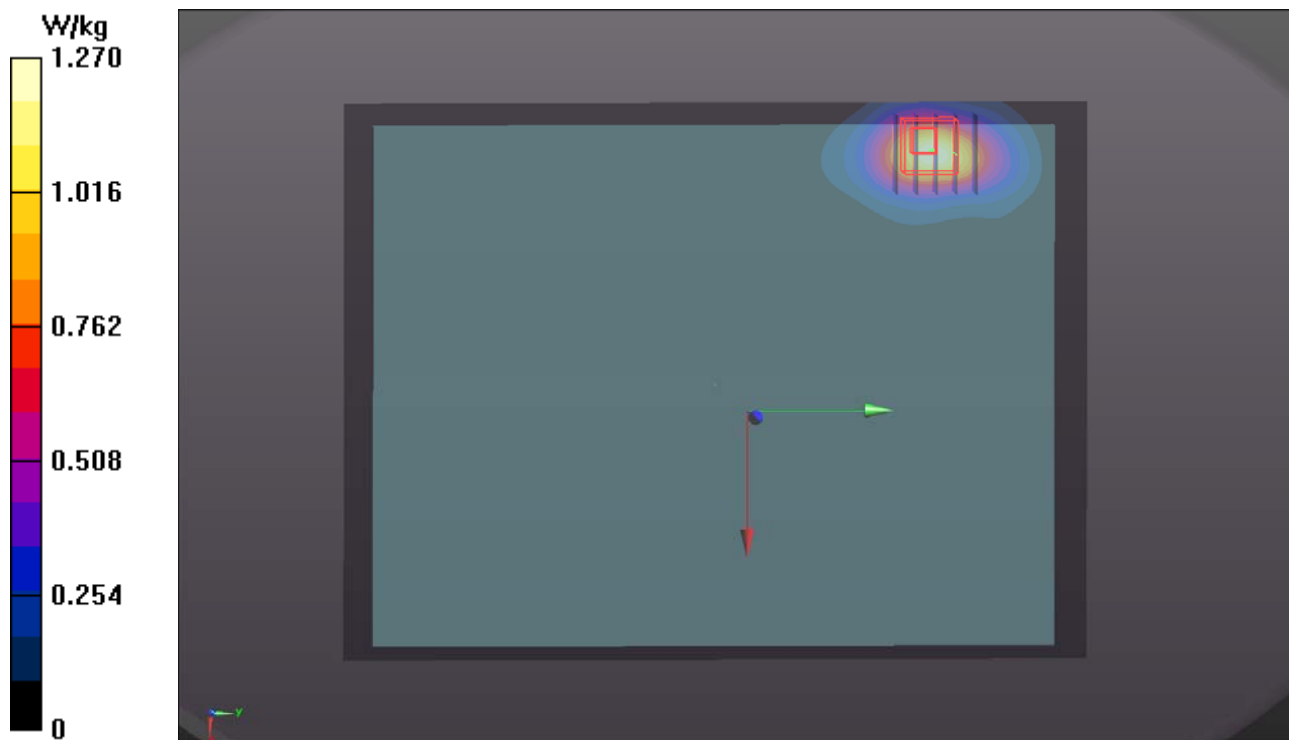
Ambient Temperature : 23.8 °C ; Liquid Temperature : 23.4 °C

DASY5 Configuration:

- Probe: EX3DV4 - SN3864; ConvF(8.14, 8.14, 8.14); Calibrated: 2016/07/25;
- Sensor-Surface: 1.4mm (Mechanical Surface Detection)
- Electronics: DAE3 Sn579; Calibrated: 2016/09/05
- Phantom: ELI Phantom_1245; Type: QDOVA;
- Measurement SW: DASY52, Version 52.8 (8); SEMCAD X Version 14.6.10 (7373)

- **Area Scan (151x201x1):** Interpolated grid: dx=1.500 mm, dy=1.500 mm
Maximum value of SAR (interpolated) = 1.27 W/kg

- **Zoom Scan (5x5x7)/Cube 0:** Measurement grid: dx=8mm, dy=8mm, dz=5mm
Reference Value = 26.40 V/m; Power Drift = 0.02 dB
Peak SAR (extrapolated) = 2.34 W/kg
SAR(1 g) = 1.18 W/kg; SAR(10 g) = 0.615 W/kg
Maximum value of SAR (measured) = 1.81 W/kg



P05 LTE 4_QPSK20M_Rear Face_0cm_Ch20175_P-Sensor_w_50RB_OS0

DUT: 170109C47

Communication System: LTE; Frequency: 1732.5 MHz; Duty Cycle: 1:1

Medium: B16T20N1_0514 Medium parameters used: $f = 1732.5$ MHz; $\sigma = 1.425$ S/m; $\epsilon_r = 51.725$; $\rho = 1000$ kg/m³

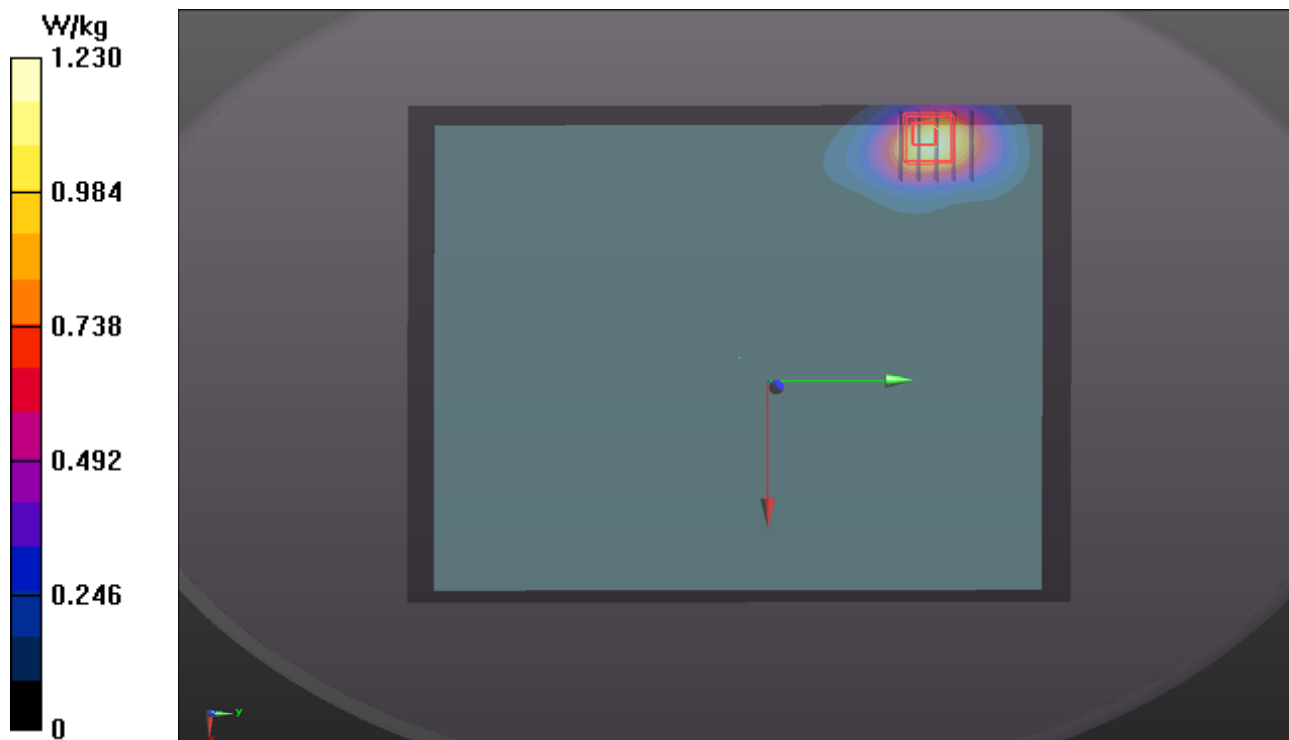
Ambient Temperature : 23.8 °C ; Liquid Temperature : 23.4 °C

DASY5 Configuration:

- Probe: EX3DV4 - SN3864; ConvF(8.43, 8.43, 8.43); Calibrated: 2016/07/25;
- Sensor-Surface: 1.4mm (Mechanical Surface Detection)
- Electronics: DAE3 Sn579; Calibrated: 2016/09/05
- Phantom: ELI Phantom_1245; Type: QDOVA;
- Measurement SW: DASY52, Version 52.8 (8); SEMCAD X Version 14.6.10 (7373)

- **Area Scan (151x201x1):** Interpolated grid: dx=1.500 mm, dy=1.500 mm
Maximum value of SAR (interpolated) = 1.23 W/kg

- **Zoom Scan (5x5x7)/Cube 0:** Measurement grid: dx=8mm, dy=8mm, dz=5mm
Reference Value = 25.51 V/m; Power Drift = 0.18 dB
Peak SAR (extrapolated) = 2.56 W/kg
SAR(1 g) = 1.12 W/kg; SAR(10 g) = 0.650 W/kg
Maximum value of SAR (measured) = 1.90 W/kg



P06 LTE 5_QPSK10M_Rear Face_0cm_Ch20450_P-Sensor_w_25RB_OS12

DUT: 170109C48

Communication System: LTE; Frequency: 829 MHz; Duty Cycle: 1:1

Medium: B07T10N3_0505 Medium parameters used: $f = 829 \text{ MHz}$; $\sigma = 0.968 \text{ S/m}$; $\epsilon_r = 54.406$; $\rho = 1000 \text{ kg/m}^3$

Ambient Temperature : $23.8 \text{ }^\circ\text{C}$; Liquid Temperature : $23.5 \text{ }^\circ\text{C}$

DASY5 Configuration:

- Probe: EX3DV4 - SN3820; ConvF(8.86, 8.86, 8.86); Calibrated: 2016/06/27;
- Sensor-Surface: 1.4mm (Mechanical Surface Detection)
- Electronics: DAE4 Sn916; Calibrated: 2016/12/15
- Phantom: ELI Phantom_1204; Type: QDOVA;
- Measurement SW: DASY52, Version 52.8 (8); SEMCAD X Version 14.6.10 (7373)

- **Area Scan (151x201x1):** Interpolated grid: $dx=1.500 \text{ mm}$, $dy=1.500 \text{ mm}$

Maximum value of SAR (interpolated) = 1.92 W/kg

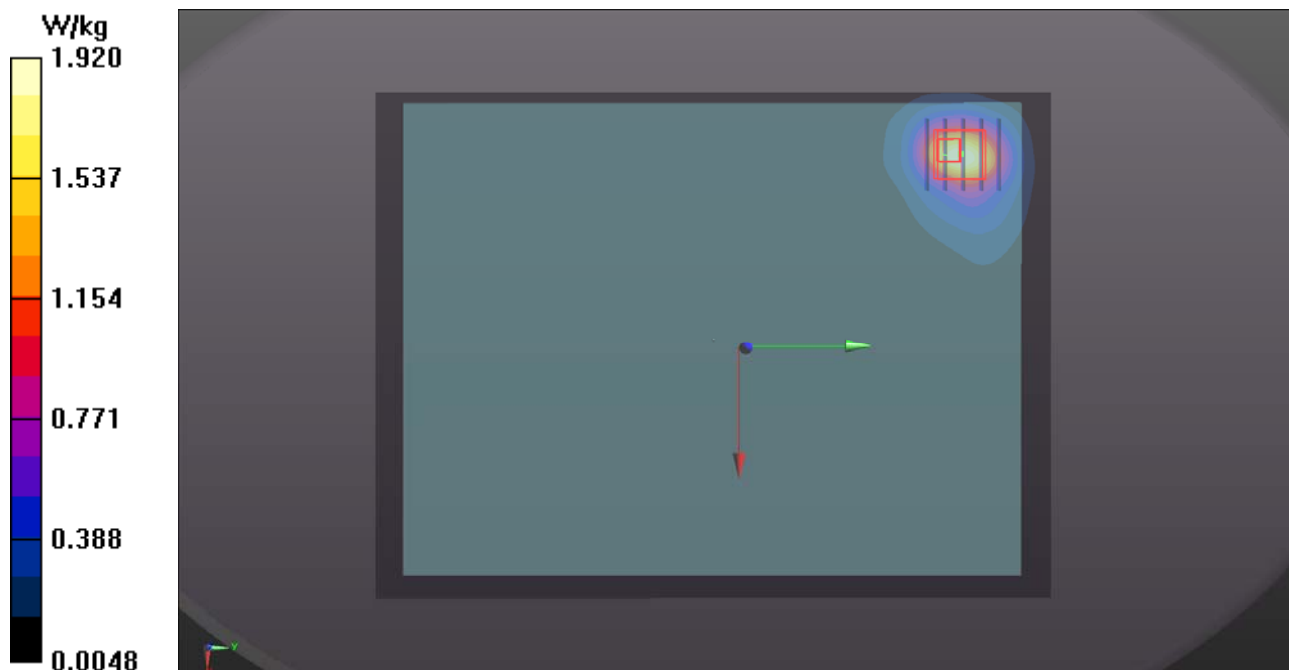
- **Zoom Scan (5x5x7)/Cube 0:** Measurement grid: $dx=8\text{mm}$, $dy=8\text{mm}$, $dz=5\text{mm}$

Reference Value = 41.27 V/m ; Power Drift = -0.16 dB

Peak SAR (extrapolated) = 1.77 W/kg

SAR(1 g) = 0.924 W/kg ; SAR(10 g) = 0.550 W/kg

Maximum value of SAR (measured) = 1.43 W/kg



P07 LTE 7_QPSK20M_Rear Face_0cm_Ch20850_P-Sensor_w_1RB_OS50

DUT: 170109C47

Communication System: LTE; Frequency: 2510 MHz; Duty Cycle: 1:1

Medium: B19T27N4_0509 Medium parameters used: $f = 2510$ MHz; $\sigma = 2.083$ S/m; $\epsilon_r = 51.416$; $\rho = 1000$ kg/m³

Ambient Temperature : 23.6 °C ; Liquid Temperature : 23.0 °C

DASY5 Configuration:

- Probe: EX3DV4 - SN3820; ConvF(6.52, 6.52, 6.52); Calibrated: 2016/06/27;
- Sensor-Surface: 1.4mm (Mechanical Surface Detection)
- Electronics: DAE4 Sn916; Calibrated: 2016/12/15
- Phantom: ELI Phantom_1043; Type: QDOVA;
- Measurement SW: DASY52, Version 52.8 (8); SEMCAD X Version 14.6.10 (7373)

- **Area Scan (191x251x1):** Interpolated grid: dx=1.200 mm, dy=1.200 mm

Maximum value of SAR (interpolated) = 1.22 W/kg

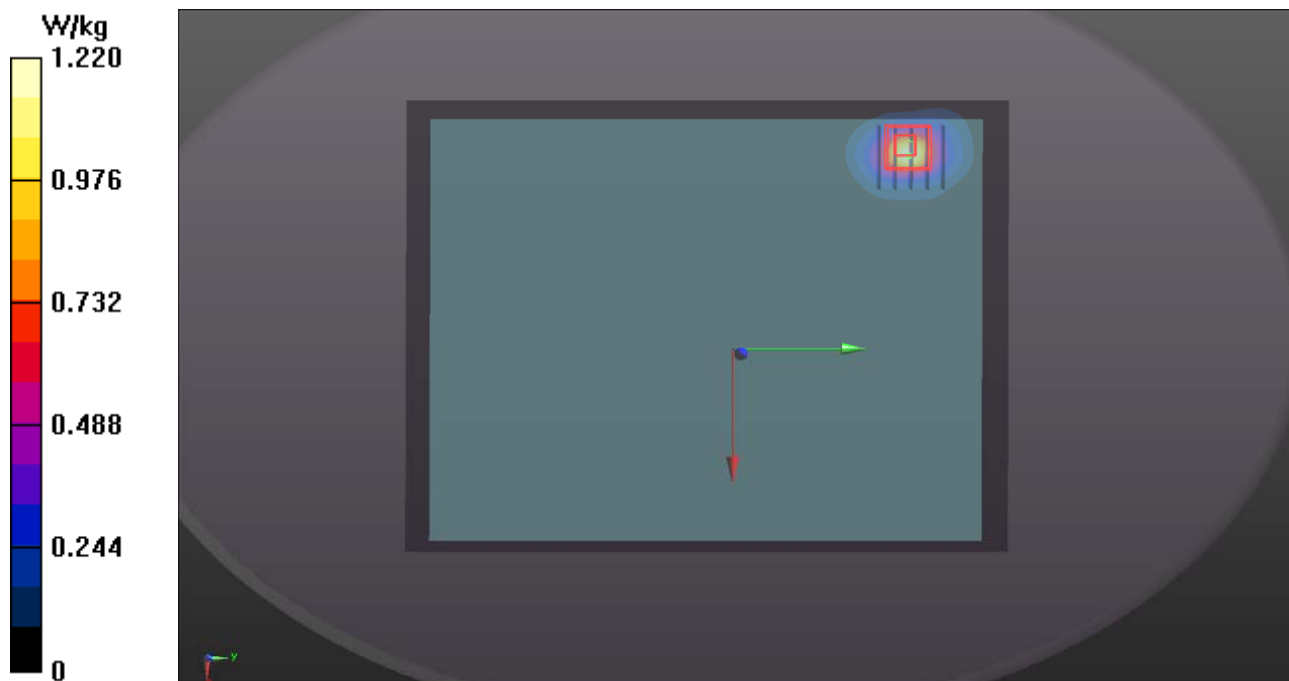
- **Zoom Scan (5x5x7)/Cube 0:** Measurement grid: dx=8mm, dy=8mm, dz=5mm

Reference Value = 25.24 V/m; Power Drift = 0.09 dB

Peak SAR (extrapolated) = 1.71 W/kg

SAR(1 g) = 0.817 W/kg; SAR(10 g) = 0.389 W/kg

Maximum value of SAR (measured) = 1.31 W/kg



P08 LTE 12_QPSK10M_Right Side_0cm_Ch23095_P-Sensor_w_25RB_OS0

DUT: 170109C48

Communication System: LTE; Frequency: 707.5 MHz; Duty Cycle: 1:1

Medium: B06T09N1_0504 Medium parameters used: $f = 707.5 \text{ MHz}$; $\sigma = 0.922 \text{ S/m}$; $\epsilon_r = 55.912$; $\rho = 1000 \text{ kg/m}^3$

Ambient Temperature : 23.7 °C ; Liquid Temperature : 23.3 °C

DASY5 Configuration:

- Probe: EX3DV4 - SN3650; ConvF(9.61, 9.61, 9.61); Calibrated: 2016/07/25;
- Sensor-Surface: 1.4mm (Mechanical Surface Detection)
- Electronics: DAE4 Sn917; Calibrated: 2017/01/06
- Phantom: ELI Phantom_1206; Type: QDOVA;
- Measurement SW: DASY52, Version 52.8 (8); SEMCAD X Version 14.6.10 (7373)

- **Area Scan (41x161x1):** Interpolated grid: $dx=1.500 \text{ mm}$, $dy=1.500 \text{ mm}$

Maximum value of SAR (interpolated) = 1.12 W/kg

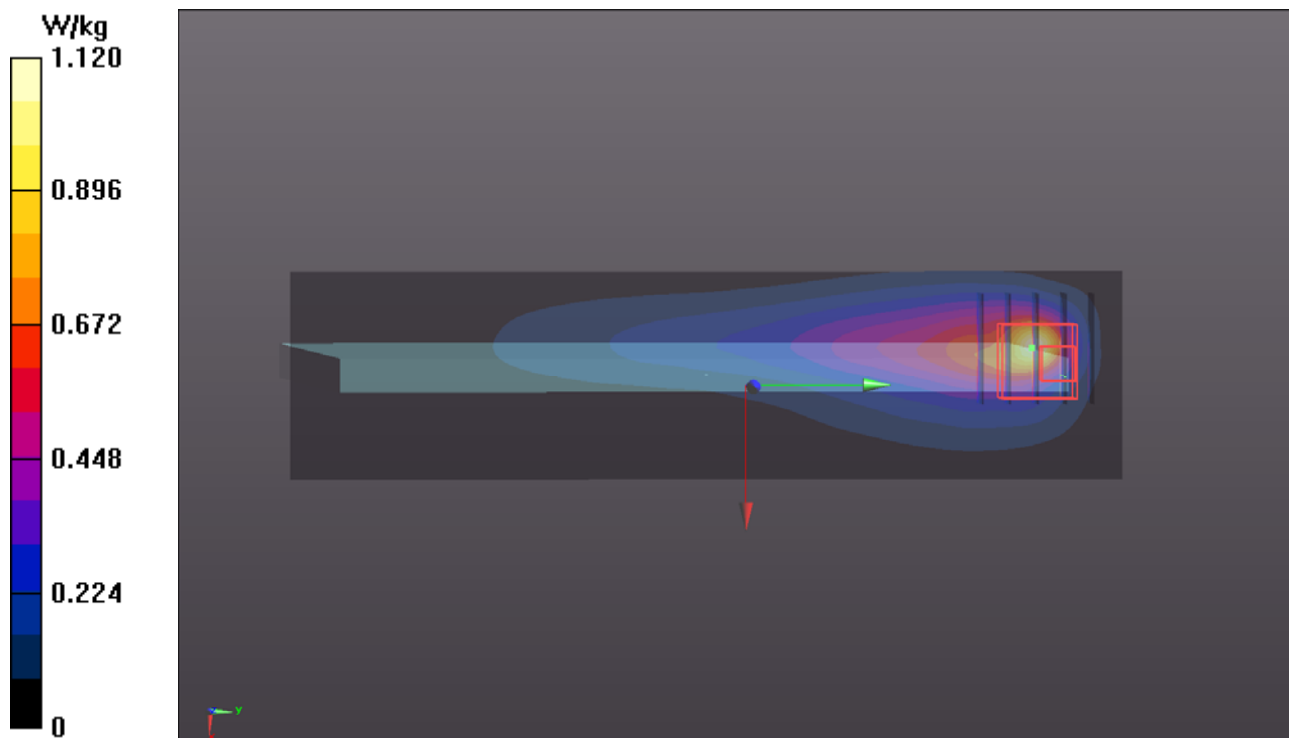
- **Zoom Scan (5x5x7)/Cube 0:** Measurement grid: $dx=8\text{mm}$, $dy=8\text{mm}$, $dz=5\text{mm}$

Reference Value = 32.08 V/m; Power Drift = -0.12 dB

Peak SAR (extrapolated) = 4.78 W/kg

SAR(1 g) = 1.02 W/kg; SAR(10 g) = 0.374 W/kg

Maximum value of SAR (measured) = 2.29 W/kg



P09 LTE 13_QPSK10M_Right Side_0cm_Ch23230_P-Sensor_w_1RB_OS0

DUT: 170109C48

Communication System: LTE; Frequency: 782 MHz; Duty Cycle: 1:1

Medium: B06T09N1_0504 Medium parameters used: $f = 782 \text{ MHz}$; $\sigma = 0.987 \text{ S/m}$; $\epsilon_r = 55.276$; $\rho = 1000 \text{ kg/m}^3$

Ambient Temperature : 23.7 °C ; Liquid Temperature : 23.3 °C

DASY5 Configuration:

- Probe: EX3DV4 - SN3650; ConvF(9.61, 9.61, 9.61); Calibrated: 2016/07/25;
- Sensor-Surface: 1.4mm (Mechanical Surface Detection)
- Electronics: DAE4 Sn917; Calibrated: 2017/01/06
- Phantom: ELI Phantom_1206; Type: QDOVA;
- Measurement SW: DASY52, Version 52.8 (8); SEMCAD X Version 14.6.10 (7373)

- **Area Scan (41x161x1):** Interpolated grid: $dx=1.500 \text{ mm}$, $dy=1.500 \text{ mm}$

Maximum value of SAR (interpolated) = 1.59 W/kg

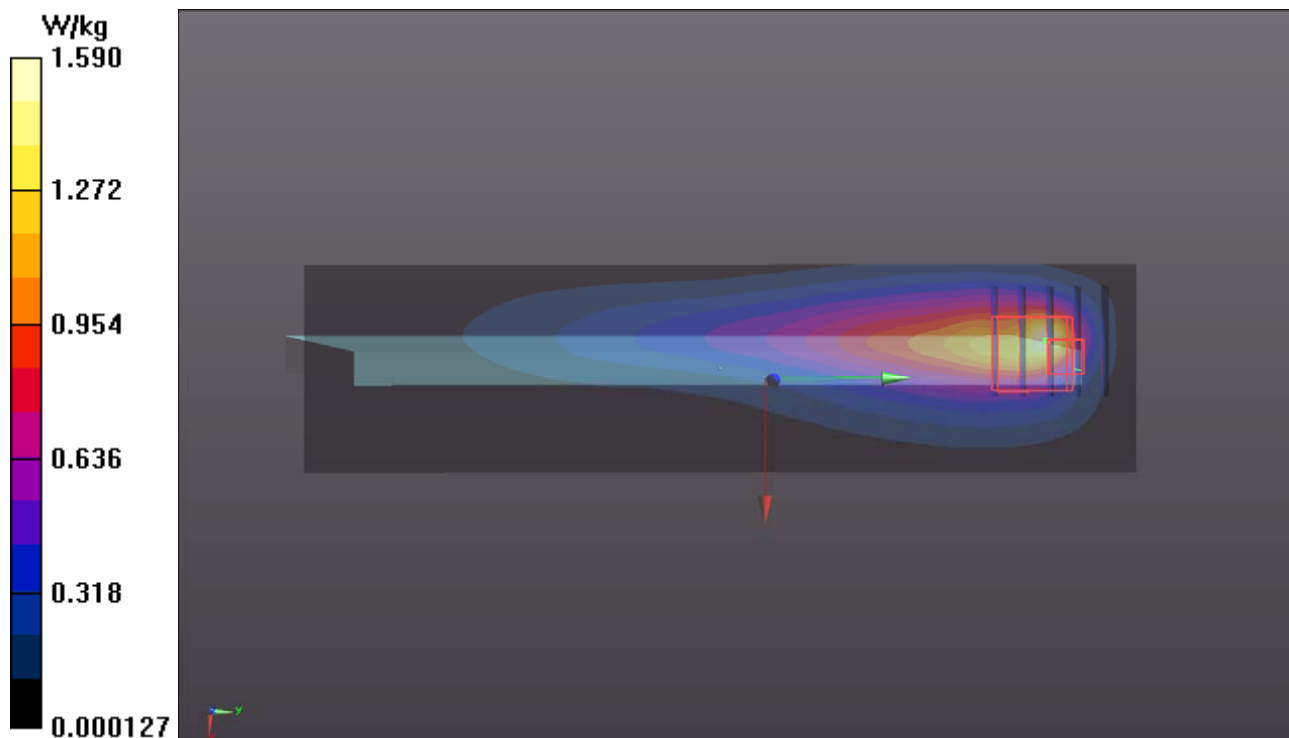
- **Zoom Scan (5x5x7)/Cube 0:** Measurement grid: $dx=8\text{mm}$, $dy=8\text{mm}$, $dz=5\text{mm}$

Reference Value = 34.04 V/m; Power Drift = 0.00 dB

Peak SAR (extrapolated) = 4.49 W/kg

SAR(1 g) = 1.19 W/kg; SAR(10 g) = 0.545 W/kg

Maximum value of SAR (measured) = 2.37 W/kg



P10 LTE 25_QPSK20M_Rear Face_0cm_Ch26140_P-Sensor_w_1RB_OS0

DUT: 170109C47

Communication System: LTE; Frequency: 1860 MHz; Duty Cycle: 1:1

Medium: B16T20N1_0514 Medium parameters used: $f = 1860$ MHz; $\sigma = 1.539$ S/m; $\epsilon_r = 51.43$; $\rho = 1000$ kg/m³

Ambient Temperature : 23.8 °C ; Liquid Temperature : 23.4 °C

DASY5 Configuration:

- Probe: EX3DV4 - SN3864; ConvF(8.14, 8.14, 8.14); Calibrated: 2016/07/25;
- Sensor-Surface: 1.4mm (Mechanical Surface Detection)
- Electronics: DAE3 Sn579; Calibrated: 2016/09/05
- Phantom: ELI Phantom_1245; Type: QDOVA;
- Measurement SW: DASY52, Version 52.8 (8); SEMCAD X Version 14.6.10 (7373)

- **Area Scan (151x201x1):** Interpolated grid: dx=1.500 mm, dy=1.500 mm

Maximum value of SAR (interpolated) = 1.38 W/kg

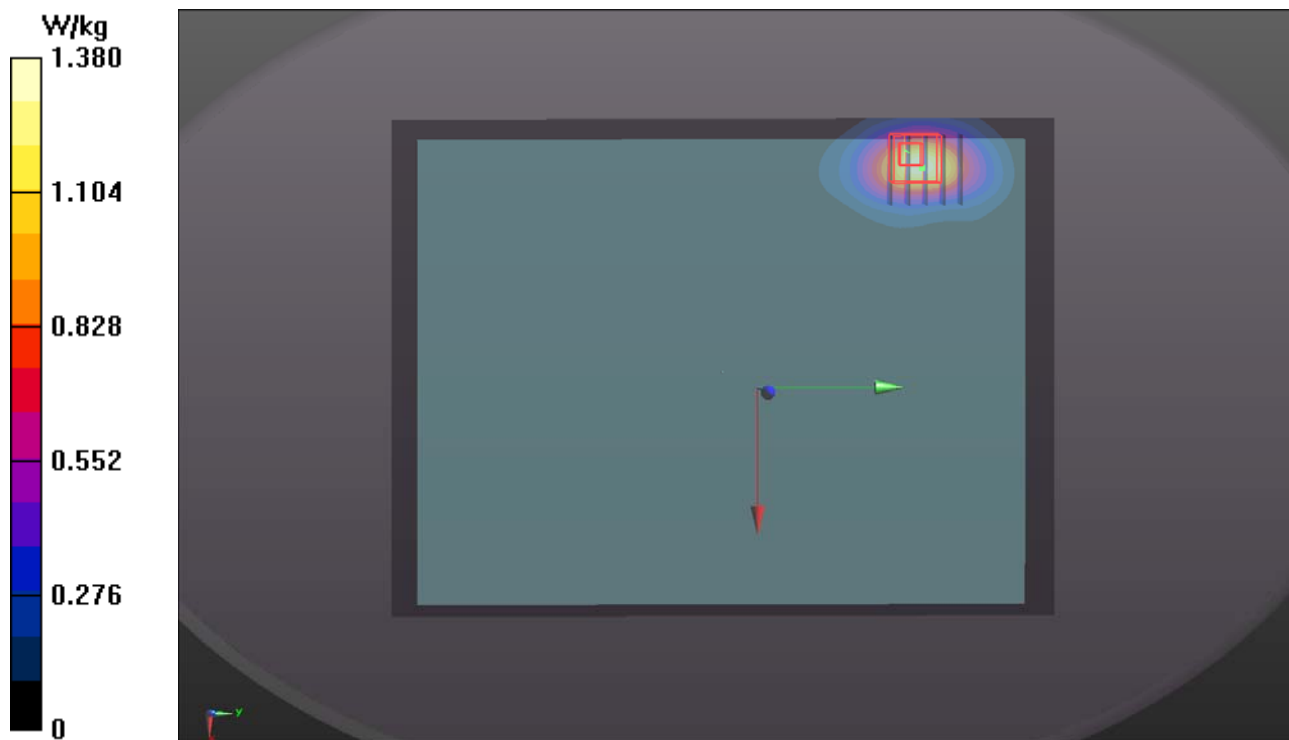
- **Zoom Scan (5x5x7)/Cube 0:** Measurement grid: dx=8mm, dy=8mm, dz=5mm

Reference Value = 28.07 V/m; Power Drift = 0.02 dB

Peak SAR (extrapolated) = 2.33 W/kg

SAR(1 g) = 1.22 W/kg; SAR(10 g) = 0.639 W/kg

Maximum value of SAR (measured) = 1.90 W/kg



P11 LTE 26_QPSK15M_Right Side_0cm_Ch26765_P-Sensor_w_36RB_OS0

DUT: 170109C48

Communication System: LTE; Frequency: 821.5 MHz; Duty Cycle: 1:1

Medium: B07T10N3_0504 Medium parameters used: $f = 821.5$ MHz; $\sigma = 0.99$ S/m; $\epsilon_r = 54.347$; $\rho = 1000$ kg/m³

Ambient Temperature : 23.7 °C ; Liquid Temperature : 23.3 °C

DASY5 Configuration:

- Probe: EX3DV4 - SN3650; ConvF(9.73, 9.73, 9.73); Calibrated: 2016/07/25;
- Sensor-Surface: 1.4mm (Mechanical Surface Detection)
- Electronics: DAE4 Sn917; Calibrated: 2017/01/06
- Phantom: ELI Phantom_1206; Type: QDOVA;
- Measurement SW: DASY52, Version 52.8 (8); SEMCAD X Version 14.6.10 (7373)

- **Area Scan (41x161x1):** Interpolated grid: dx=1.500 mm, dy=1.500 mm

Maximum value of SAR (interpolated) = 0.994 W/kg

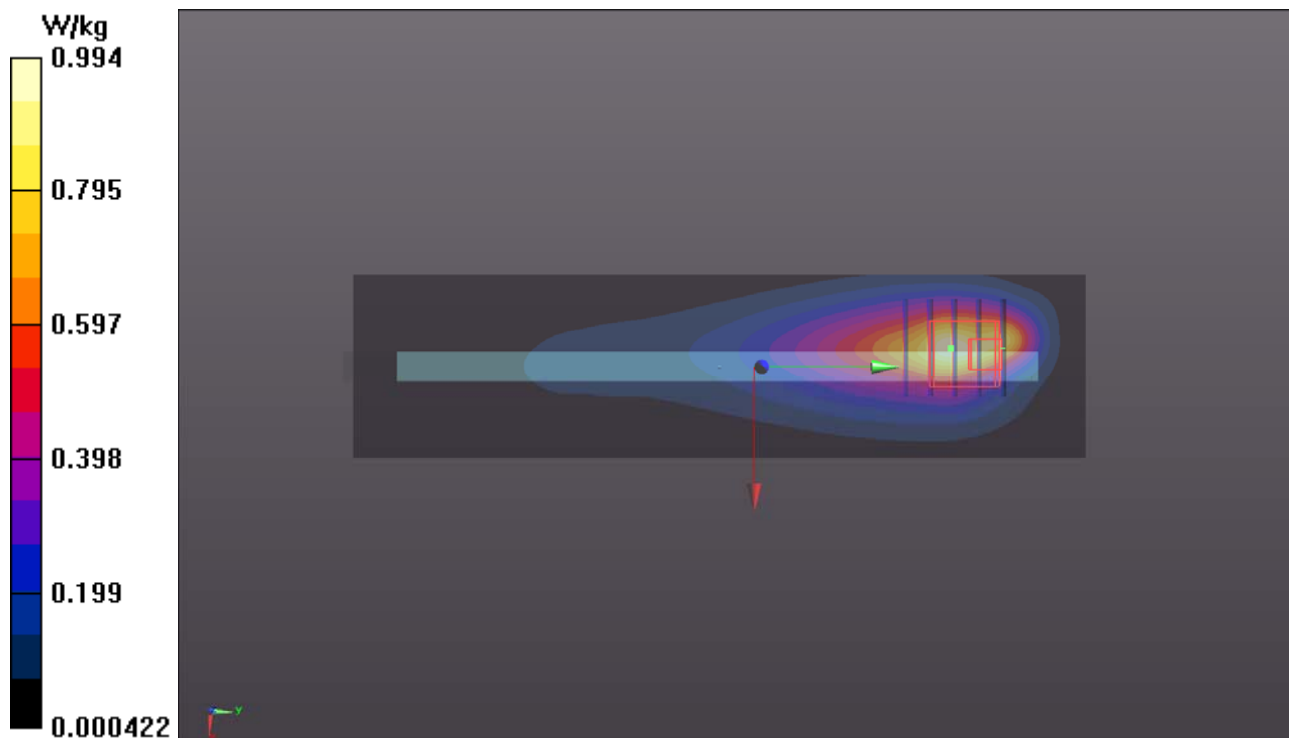
- **Zoom Scan (5x5x7)/Cube 0:** Measurement grid: dx=8mm, dy=8mm, dz=5mm

Reference Value = 30.83 V/m; Power Drift = -0.10 dB

Peak SAR (extrapolated) = 3.80 W/kg

SAR(1 g) = 0.943 W/kg; SAR(10 g) = 0.444 W/kg

Maximum value of SAR (measured) = 2.41 W/kg



P12 LTE 41_QPSK20M_Right Side_0cm_Ch39750_P-Sensor_w_50RB_OS0

DUT: 170109C47

Communication System: LTE TDD CF0; Frequency: 2506 MHz; Duty Cycle: 1:1.58

Medium: B19T27N5_0514 Medium parameters used: $f = 2506$ MHz; $\sigma = 2.077$ S/m; $\epsilon_r = 51.495$; $\rho =$

1000 kg/m³

Ambient Temperature : 23.7 °C ; Liquid Temperature : 23.2 °C

DASY5 Configuration:

- Probe: EX3DV4 - SN3864; ConvF(7.6, 7.6, 7.6); Calibrated: 2016/07/25;
- Sensor-Surface: 1.4mm (Mechanical Surface Detection)
- Electronics: DAE3 Sn579; Calibrated: 2016/09/05
- Phantom: ELI Phantom_1245; Type: QDOVA;
- Measurement SW: DASY52, Version 52.8 (8); SEMCAD X Version 14.6.10 (7373)

- **Area Scan (51x201x1):** Interpolated grid: dx=1.200 mm, dy=1.200 mm

Maximum value of SAR (interpolated) = 0.802 W/kg

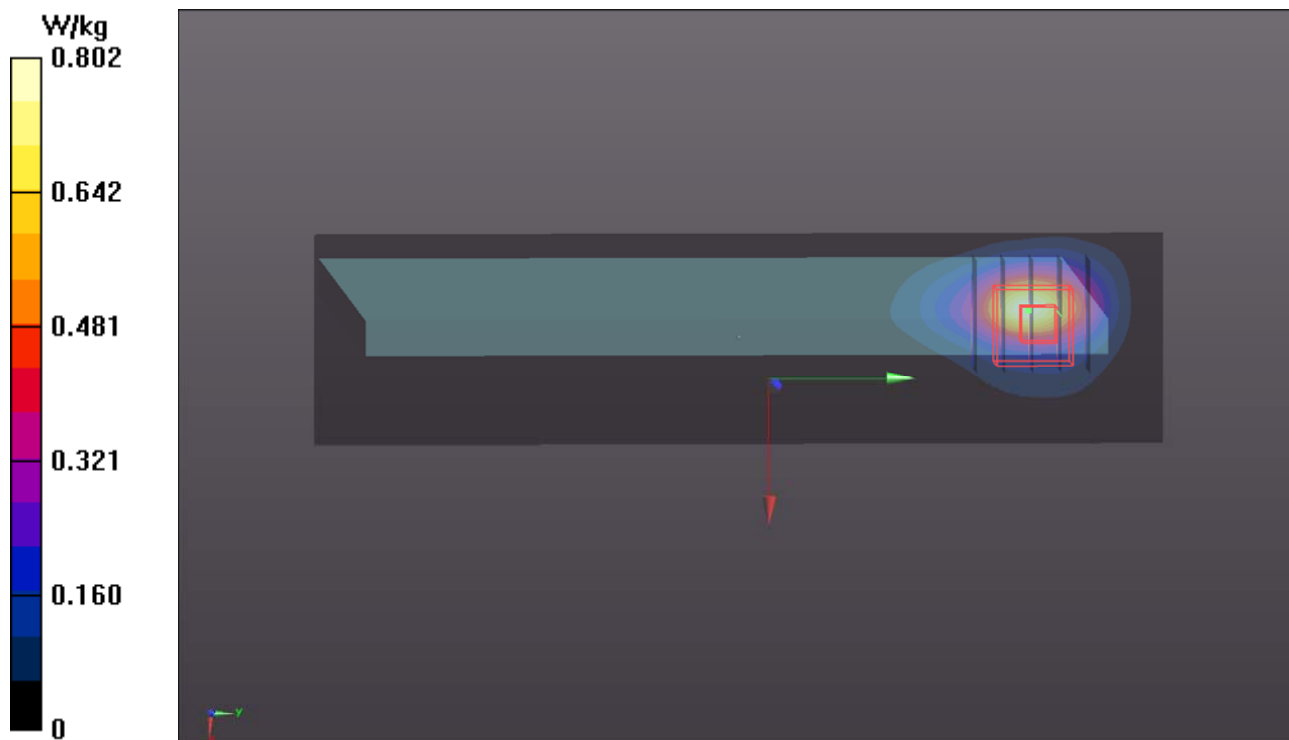
- **Zoom Scan (5x5x7)/Cube 0:** Measurement grid: dx=8mm, dy=8mm, dz=5mm

Reference Value = 19.91 V/m; Power Drift = -0.07 dB

Peak SAR (extrapolated) = 2.25 W/kg

SAR(1 g) = 0.869 W/kg; SAR(10 g) = 0.332 W/kg

Maximum value of SAR (measured) = 1.29 W/kg



P13 WCDMA II_RMC12.2K_Bottom Side_0cm_Ch9262_Keyboard M

DUT: 170109C47

Communication System: WCDMA; Frequency: 1852.4 MHz; Duty Cycle: 1:1

Medium: B16T20N2_0522 Medium parameters used: $f = 1852.4$ MHz; $\sigma = 1.526$ S/m; $\epsilon_r = 51.311$; ρ

$= 1000$ kg/m³

Ambient Temperature : 23.8 °C ; Liquid Temperature : 23.2 °C

DASY5 Configuration:

- Probe: EX3DV4 - SN3864; ConvF(8.14, 8.14, 8.14); Calibrated: 2016/07/25;
- Sensor-Surface: 1.4mm (Mechanical Surface Detection)
- Electronics: DAE3 Sn579; Calibrated: 2016/09/05
- Phantom: ELI Phantom_1245; Type: QDOVA;
- Measurement SW: DASY52, Version 52.8 (8); SEMCAD X Version 14.6.10 (7373)

- **Area Scan (171x201x1):** Interpolated grid: dx=1.500 mm, dy=1.500 mm

Maximum value of SAR (interpolated) = 0.472 W/kg

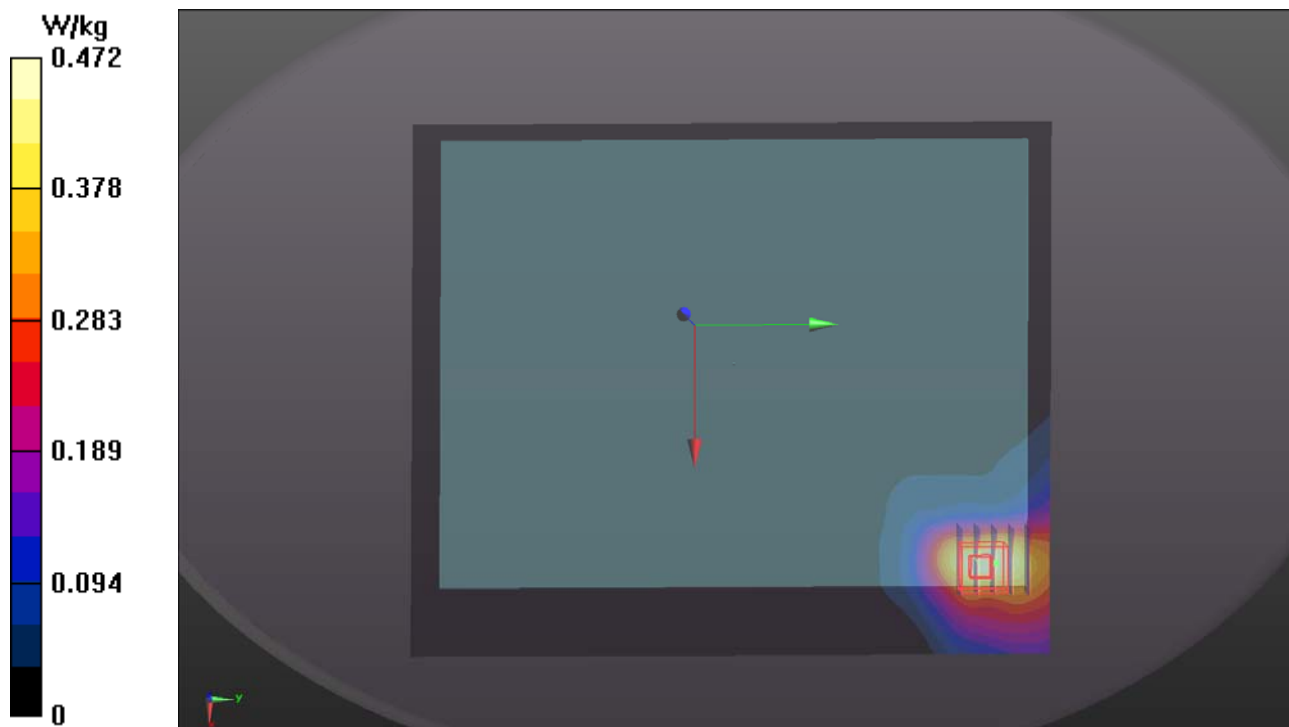
- **Zoom Scan (5x5x7)/Cube 0:** Measurement grid: dx=8mm, dy=8mm, dz=5mm

Reference Value = 17.30 V/m; Power Drift = -0.12 dB

Peak SAR (extrapolated) = 1.56 W/kg

SAR(1 g) = 0.774 W/kg; SAR(10 g) = 0.380 W/kg

Maximum value of SAR (measured) = 1.24 W/kg



P14 WCDMA IV_RMC12.2K_Bottom Side_0cm_Ch1513_Keyboard M

DUT: 170109C47

Communication System: WCDMA; Frequency: 1752.6 MHz; Duty Cycle: 1:1

Medium: B16T20N2_0522 Medium parameters used: $f = 1753$ MHz; $\sigma = 1.434$ S/m; $\epsilon_r = 51.649$; $\rho = 1000$ kg/m³

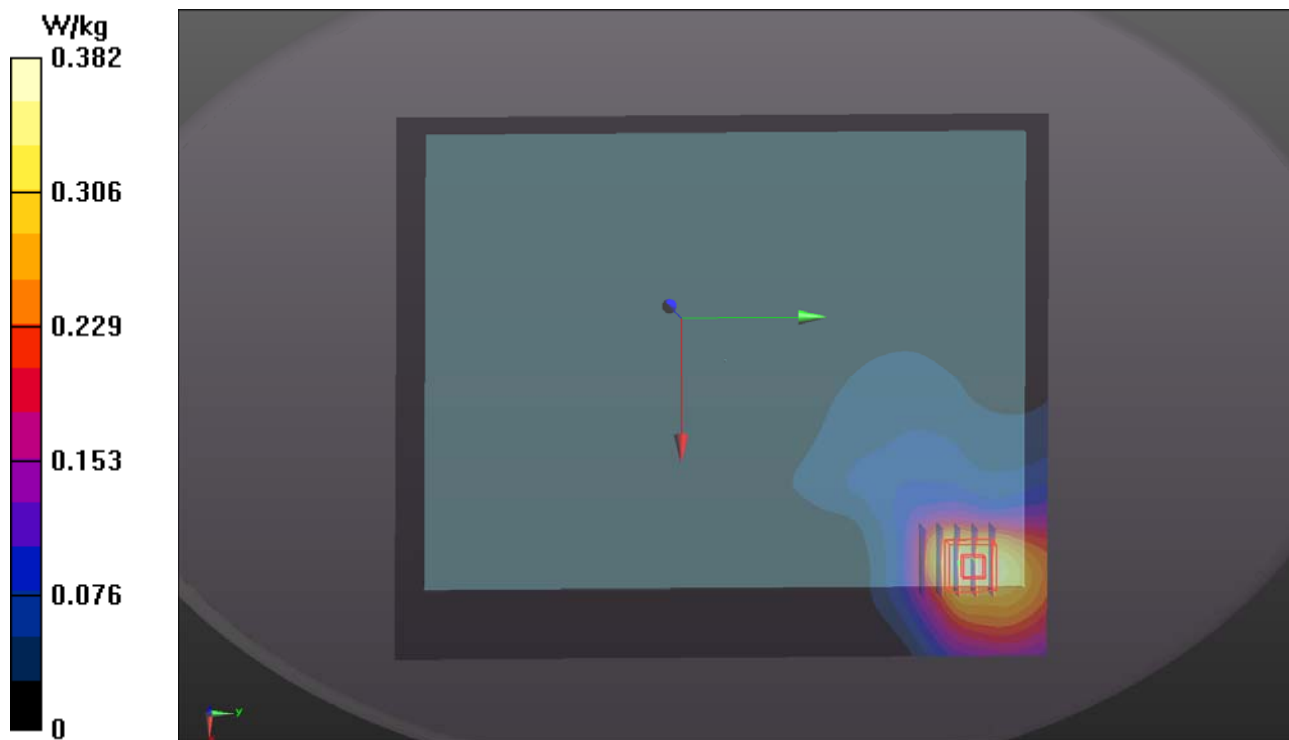
Ambient Temperature : 23.8 °C ; Liquid Temperature : 23.2 °C

DASY5 Configuration:

- Probe: EX3DV4 - SN3864; ConvF(8.43, 8.43, 8.43); Calibrated: 2016/07/25;
- Sensor-Surface: 1.4mm (Mechanical Surface Detection)
- Electronics: DAE3 Sn579; Calibrated: 2016/09/05
- Phantom: ELI Phantom_1245; Type: QDOVA;
- Measurement SW: DASY52, Version 52.8 (8); SEMCAD X Version 14.6.10 (7373)

- **Area Scan (171x201x1):** Interpolated grid: dx=1.500 mm, dy=1.500 mm
Maximum value of SAR (interpolated) = 0.382 W/kg

- **Zoom Scan (5x5x7)/Cube 0:** Measurement grid: dx=8mm, dy=8mm, dz=5mm
Reference Value = 15.04 V/m; Power Drift = -0.12 dB
Peak SAR (extrapolated) = 0.997 W/kg
SAR(1 g) = 0.516 W/kg; SAR(10 g) = 0.270 W/kg
Maximum value of SAR (measured) = 0.803 W/kg



P15 WCDMA V_RMC12.2K_Bottom Side_0cm_Ch4233_Keyboard M

DUT: 170109C47

Communication System: WCDMA; Frequency: 846.6 MHz; Duty Cycle: 1:1

Medium: B07T10N1_0523 Medium parameters used: $f = 847$ MHz; $\sigma = 1.022$ S/m; $\epsilon_r = 56.609$; $\rho = 1000$ kg/m³

Ambient Temperature : 23.6 °C ; Liquid Temperature : 23.3 °C

DASY5 Configuration:

- Probe: EX3DV4 - SN3820; ConvF(8.86, 8.86, 8.86); Calibrated: 2016/06/27;
- Sensor-Surface: 1.4mm (Mechanical Surface Detection)
- Electronics: DAE3 Sn360; Calibrated: 2016/11/08
- Phantom: ELI Phantom_1043; Type: QDOVA;
- Measurement SW: DASY52, Version 52.8 (8); SEMCAD X Version 14.6.10 (7373)

- **Area Scan (171x201x1):** Interpolated grid: dx=1.500 mm, dy=1.500 mm

Maximum value of SAR (interpolated) = 0.111 W/kg

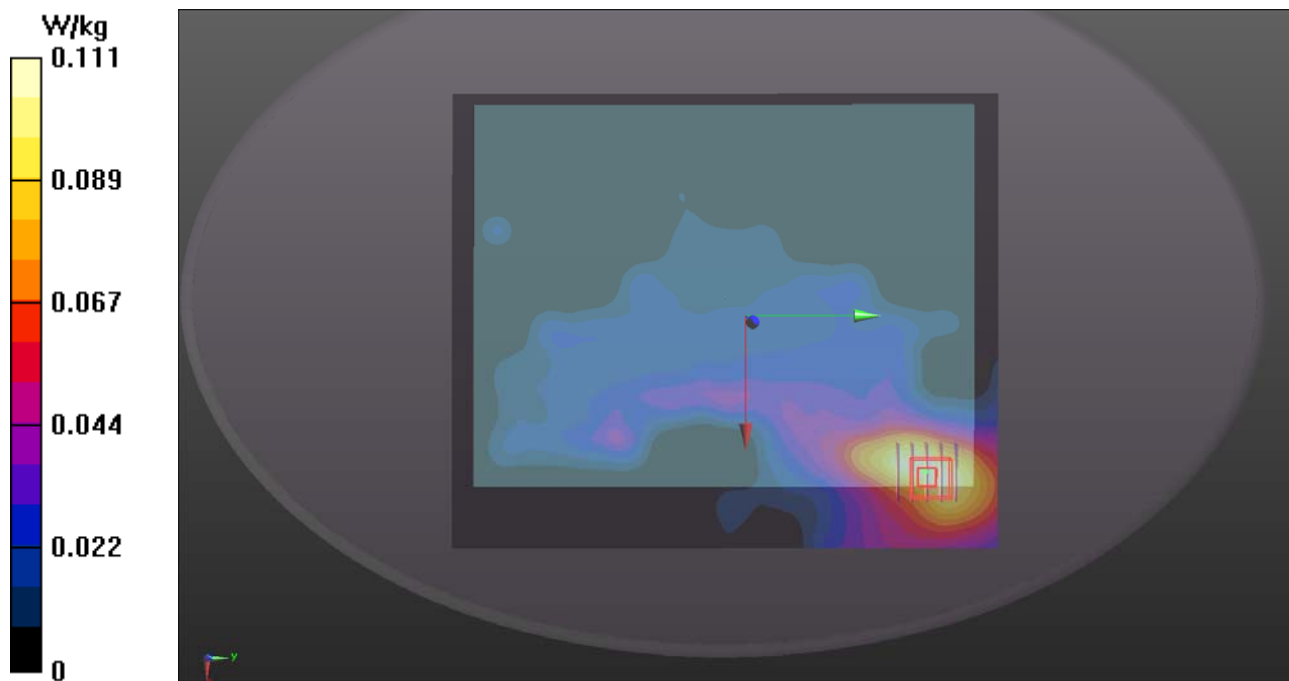
- **Zoom Scan (5x5x7)/Cube 0:** Measurement grid: dx=8mm, dy=8mm, dz=5mm

Reference Value = 10.66 V/m; Power Drift = -0.01 dB

Peak SAR (extrapolated) = 0.390 W/kg

SAR(1 g) = 0.187 W/kg; SAR(10 g) = 0.103 W/kg

Maximum value of SAR (measured) = 0.269 W/kg



P16 LTE 2_QPSK20M_Bottom Side_0cm_Ch18700_Keyboard M_1RB_OS0

DUT: 170109C47

Communication System: LTE; Frequency: 1860 MHz; Duty Cycle: 1:1

Medium: B16T20N2_0522 Medium parameters used: $f = 1860$ MHz; $\sigma = 1.533$ S/m; $\epsilon_r = 51.286$; $\rho = 1000$ kg/m³

Ambient Temperature : 23.8 °C ; Liquid Temperature : 23.2 °C

DASY5 Configuration:

- Probe: EX3DV4 - SN3864; ConvF(8.14, 8.14, 8.14); Calibrated: 2016/07/25;
- Sensor-Surface: 1.4mm (Mechanical Surface Detection)
- Electronics: DAE3 Sn579; Calibrated: 2016/09/05
- Phantom: ELI Phantom_1245; Type: QDOVA;
- Measurement SW: DASY52, Version 52.8 (8); SEMCAD X Version 14.6.10 (7373)

- **Area Scan (171x201x1):** Interpolated grid: dx=1.500 mm, dy=1.500 mm

Maximum value of SAR (interpolated) = 0.896 W/kg

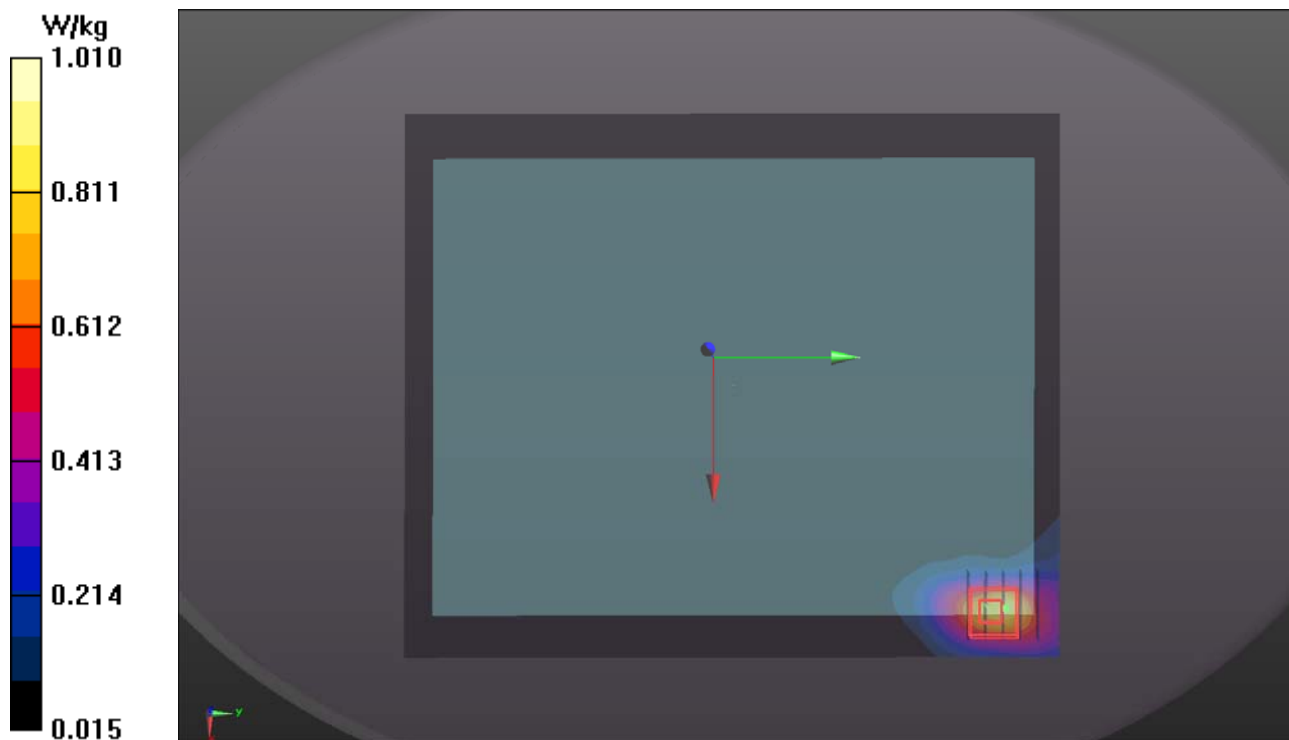
- **Zoom Scan (5x5x7)/Cube 0:** Measurement grid: dx=8mm, dy=8mm, dz=5mm

Reference Value = 24.77 V/m; Power Drift = -0.16 dB

Peak SAR (extrapolated) = 1.24 W/kg

SAR(1 g) = 0.625 W/kg; SAR(10 g) = 0.317 W/kg

Maximum value of SAR (measured) = 1.01 W/kg



P17 LTE 4_QPSK20M_Bottom Side_0cm_Ch20050_Keyboard M_1RB_OS0

DUT: 170109C47

Communication System: LTE; Frequency: 1720 MHz; Duty Cycle: 1:1

Medium: B16T20N2_0522 Medium parameters used: $f = 1720$ MHz; $\sigma = 1.402$ S/m; $\epsilon_r = 51.749$; $\rho = 1000$ kg/m³

Ambient Temperature : 23.8 °C ; Liquid Temperature : 23.2 °C

DASY5 Configuration:

- Probe: EX3DV4 - SN3864; ConvF(8.43, 8.43, 8.43); Calibrated: 2016/07/25;
- Sensor-Surface: 1.4mm (Mechanical Surface Detection)
- Electronics: DAE3 Sn579; Calibrated: 2016/09/05
- Phantom: ELI Phantom_1245; Type: QDOVA;
- Measurement SW: DASY52, Version 52.8 (8); SEMCAD X Version 14.6.10 (7373)

- **Area Scan (171x201x1):** Interpolated grid: dx=1.500 mm, dy=1.500 mm

Maximum value of SAR (interpolated) = 0.218 W/kg

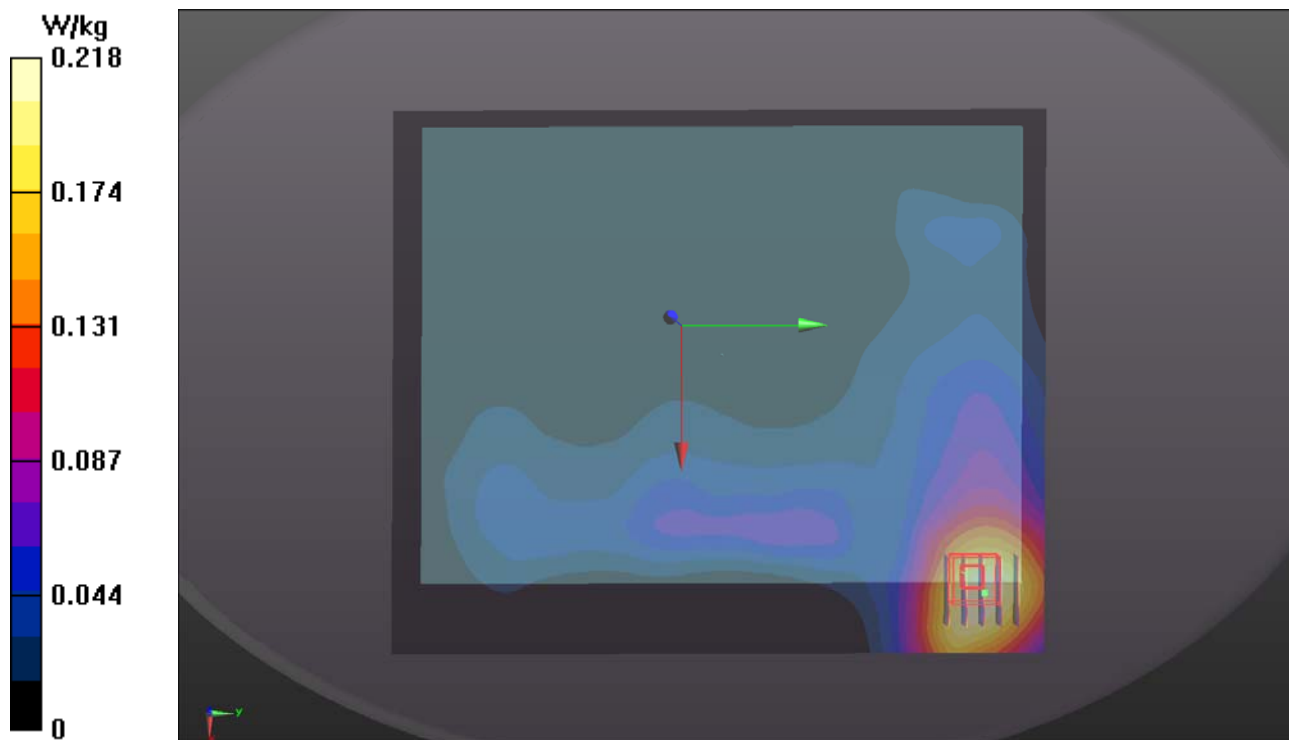
- **Zoom Scan (5x5x7)/Cube 0:** Measurement grid: dx=8mm, dy=8mm, dz=5mm

Reference Value = 12.61 V/m; Power Drift = -0.03 dB

Peak SAR (extrapolated) = 0.686 W/kg

SAR(1 g) = 0.346 W/kg; SAR(10 g) = 0.170 W/kg

Maximum value of SAR (measured) = 0.550 W/kg



P18 LTE 5_QPSK10M_Bottom Side_0cm_Ch20525_Keyboard M_1RB_OS0

DUT: 170109C47

Communication System: LTE; Frequency: 836.5 MHz; Duty Cycle: 1:1

Medium: B07T10N1_0523 Medium parameters used: $f = 836.5$ MHz; $\sigma = 1.013$ S/m; $\epsilon_r = 56.682$; $\rho =$

1000 kg/m³

Ambient Temperature : 23.6 °C ; Liquid Temperature : 23.3 °C

DASY5 Configuration:

- Probe: EX3DV4 - SN3820; ConvF(8.86, 8.86, 8.86); Calibrated: 2016/06/27;
- Sensor-Surface: 1.4mm (Mechanical Surface Detection)
- Electronics: DAE3 Sn360; Calibrated: 2016/11/08
- Phantom: ELI Phantom_1043; Type: QDOVA;
- Measurement SW: DASY52, Version 52.8 (8); SEMCAD X Version 14.6.10 (7373)

- **Area Scan (171x201x1):** Interpolated grid: dx=1.500 mm, dy=1.500 mm

Maximum value of SAR (interpolated) = 0.0978 W/kg

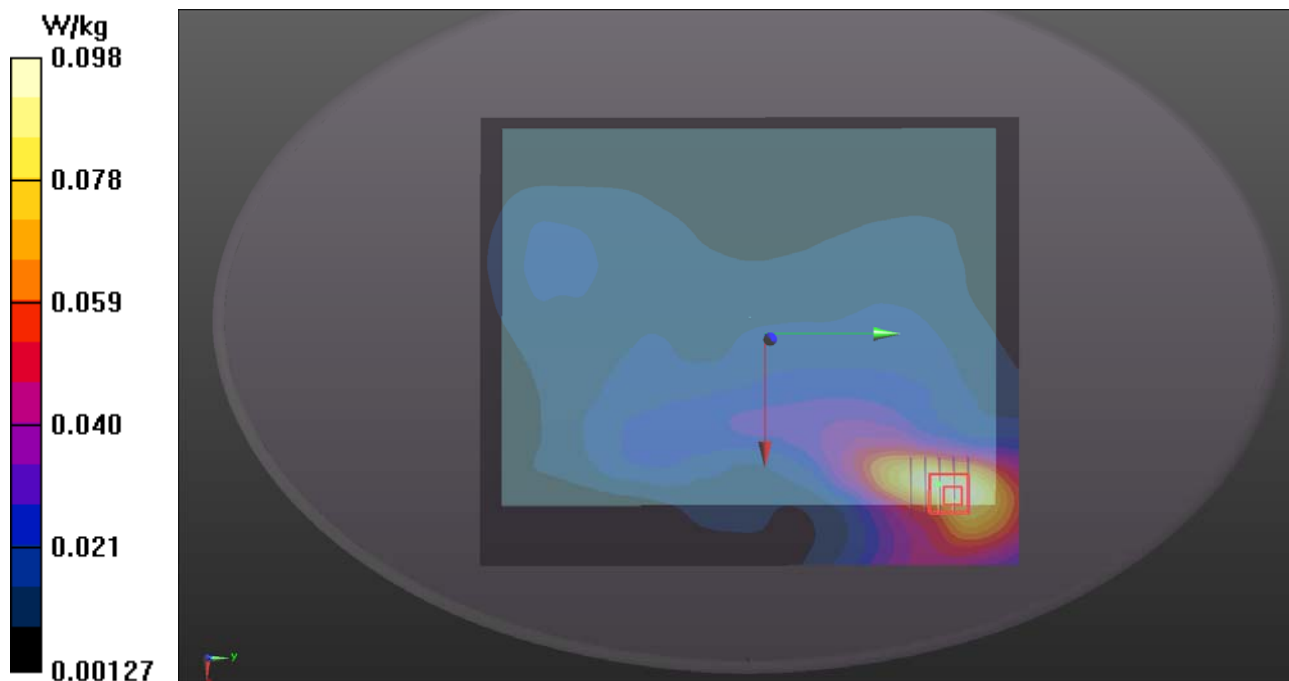
- **Zoom Scan (5x5x7)/Cube 0:** Measurement grid: dx=8mm, dy=8mm, dz=5mm

Reference Value = 10.13 V/m; Power Drift = 0.10 dB

Peak SAR (extrapolated) = 0.345 W/kg

SAR(1 g) = 0.161 W/kg; SAR(10 g) = 0.089 W/kg

Maximum value of SAR (measured) = 0.263 W/kg



P19 LTE 7_QPSK20M_Bottom Side_0cm_Ch21100_Keyboard M_1RB_OS0

DUT: 170109C47

Communication System: LTE; Frequency: 2535 MHz; Duty Cycle: 1:1

Medium: B19T27N4_0608 Medium parameters used: $f = 2535$ MHz; $\sigma = 2.124$ S/m; $\epsilon_r = 51.852$; $\rho = 1000$ kg/m³

Ambient Temperature : 23.9 °C ; Liquid Temperature : 23.5 °C

DASY5 Configuration:

- Probe: EX3DV4 - SN3971; ConvF(7.32, 7.32, 7.32); Calibrated: 2017/03/24;
- Sensor-Surface: 1.4mm (Mechanical Surface Detection)
- Electronics: DAE4 Sn1431; Calibrated: 2017/03/20
- Phantom: ELI Phantom_1204; Type: QDOVA;
- Measurement SW: DASY52, Version 52.8 (8); SEMCAD X Version 14.6.10 (7373)

- **Area Scan (211x251x1):** Interpolated grid: dx=1.200 mm, dy=1.200 mm

Maximum value of SAR (interpolated) = 0.301 W/kg

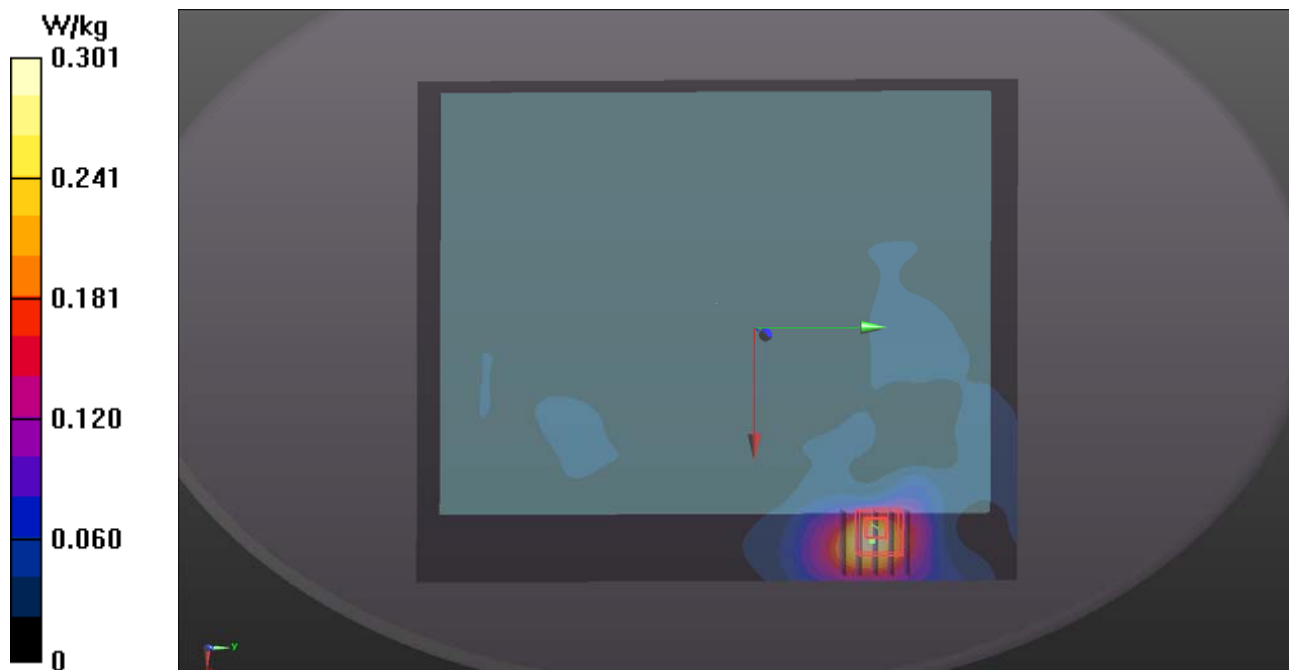
- **Zoom Scan (5x5x7)/Cube 0:** Measurement grid: dx=8mm, dy=8mm, dz=5mm

Reference Value = 11.60 V/m; Power Drift = -0.01 dB

Peak SAR (extrapolated) = 0.360 W/kg

SAR(1 g) = 0.185 W/kg; SAR(10 g) = 0.097 W/kg

Maximum value of SAR (measured) = 0.288 W/kg



P20 LTE 12_QPSK10M_Bottom Side_0cm_Ch23095_Keyboard M_1RB_OS0

DUT: 170109C47

Communication System: LTE; Frequency: 707.5 MHz; Duty Cycle: 1:1

Medium: B06T09N1_0608 Medium parameters used: $f = 707.5 \text{ MHz}$; $\sigma = 0.923 \text{ S/m}$; $\epsilon_r = 54.602$; $\rho = 1000 \text{ kg/m}^3$

Ambient Temperature : 23.9 °C ; Liquid Temperature : 23.5 °C

DASY5 Configuration:

- Probe: EX3DV4 - SN3971; ConvF(10.61, 10.61, 10.61); Calibrated: 2017/03/24;
- Sensor-Surface: 1.4mm (Mechanical Surface Detection)
- Electronics: DAE4 Sn1431; Calibrated: 2017/03/20
- Phantom: ELI Phantom_1204; Type: QDOVA;
- Measurement SW: DASY52, Version 52.8 (8); SEMCAD X Version 14.6.10 (7373)

- **Area Scan (171x201x1):** Interpolated grid: $dx=1.500 \text{ mm}$, $dy=1.500 \text{ mm}$

Maximum value of SAR (interpolated) = 0.120 W/kg

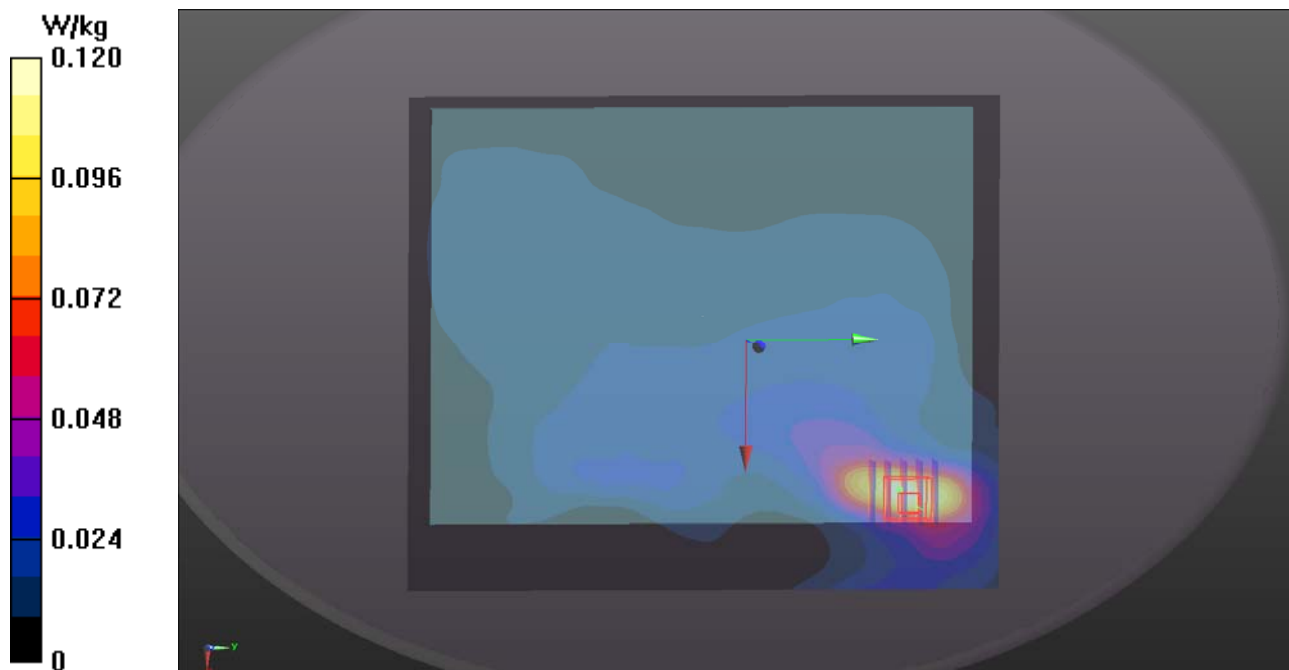
- **Zoom Scan (5x5x7)/Cube 0:** Measurement grid: $dx=8\text{mm}$, $dy=8\text{mm}$, $dz=5\text{mm}$

Reference Value = 12.22 V/m; Power Drift = -0.04 dB

Peak SAR (extrapolated) = 0.204 W/kg

SAR(1 g) = 0.116 W/kg; SAR(10 g) = 0.074 W/kg

Maximum value of SAR (measured) = 0.172 W/kg



P21 LTE 13_QPSK10M_Bottom Side_0cm_Ch23230_Keyboard M_1RB_OS0

DUT: 170109C47

Communication System: LTE; Frequency: 782 MHz; Duty Cycle: 1:1

Medium: B06T09N1_0608 Medium parameters used: $f = 782 \text{ MHz}$; $\sigma = 0.992 \text{ S/m}$; $\epsilon_r = 53.832$; $\rho = 1000 \text{ kg/m}^3$

Ambient Temperature : 23.9 °C ; Liquid Temperature : 23.5 °C

DASY5 Configuration:

- Probe: EX3DV4 - SN3971; ConvF(10.61, 10.61, 10.61); Calibrated: 2017/03/24;
- Sensor-Surface: 1.4mm (Mechanical Surface Detection)
- Electronics: DAE4 Sn1431; Calibrated: 2017/03/20
- Phantom: ELI Phantom_1204; Type: QDOVA;
- Measurement SW: DASY52, Version 52.8 (8); SEMCAD X Version 14.6.10 (7373)

- **Area Scan (171x201x1):** Interpolated grid: $dx=1.500 \text{ mm}$, $dy=1.500 \text{ mm}$

Maximum value of SAR (interpolated) = 0.150 W/kg

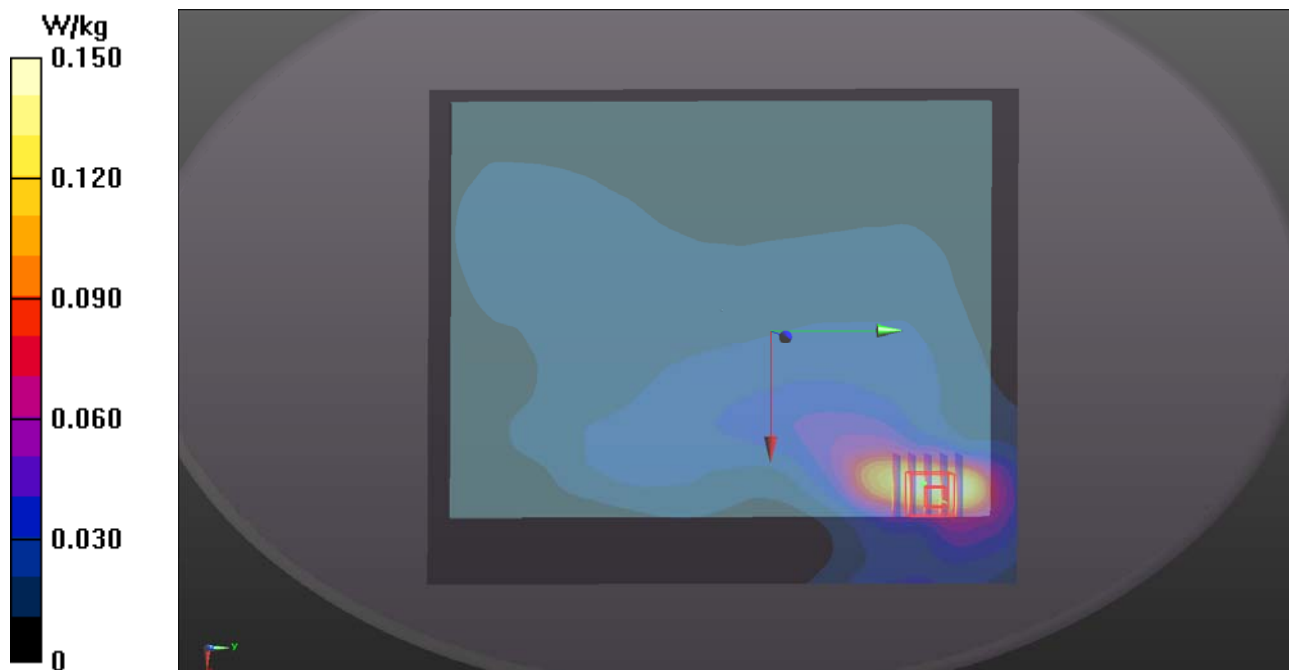
- **Zoom Scan (5x5x7)/Cube 0:** Measurement grid: $dx=8\text{mm}$, $dy=8\text{mm}$, $dz=5\text{mm}$

Reference Value = 12.97 V/m; Power Drift = -0.07 dB

Peak SAR (extrapolated) = 0.267 W/kg

SAR(1 g) = 0.142 W/kg; SAR(10 g) = 0.089 W/kg

Maximum value of SAR (measured) = 0.215 W/kg



P22 LTE 25_QPSK20M_Bottom Side_0cm_Ch26590_Keyboard M_1RB_OS0

DUT: 170109C47

Communication System: LTE; Frequency: 1905 MHz; Duty Cycle: 1:1

Medium: B16T20N2_0522 Medium parameters used: $f = 1905 \text{ MHz}$; $\sigma = 1.571 \text{ S/m}$; $\epsilon_r = 51.187$; $\rho = 1000 \text{ kg/m}^3$

Ambient Temperature : $23.8 \text{ }^\circ\text{C}$; Liquid Temperature : $23.2 \text{ }^\circ\text{C}$

DASY5 Configuration:

- Probe: EX3DV4 - SN3864; ConvF(8.14, 8.14, 8.14); Calibrated: 2016/07/25;
- Sensor-Surface: 1.4mm (Mechanical Surface Detection)
- Electronics: DAE3 Sn579; Calibrated: 2016/09/05
- Phantom: ELI Phantom_1245; Type: QDOVA;
- Measurement SW: DASY52, Version 52.8 (8); SEMCAD X Version 14.6.10 (7373)

- **Area Scan (171x201x1):** Interpolated grid: $dx=1.500 \text{ mm}$, $dy=1.500 \text{ mm}$

Maximum value of SAR (interpolated) = 0.544 W/kg

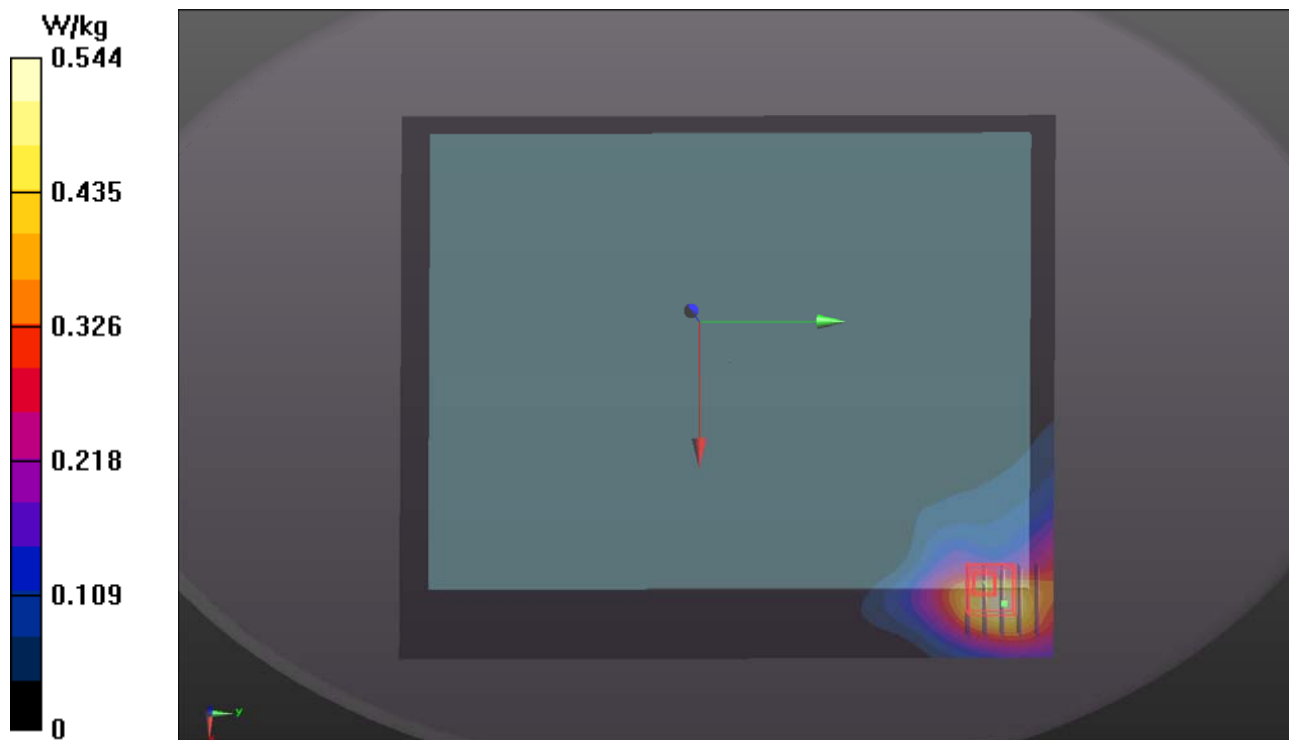
- **Zoom Scan (5x5x7)/Cube 0:** Measurement grid: $dx=8\text{mm}$, $dy=8\text{mm}$, $dz=5\text{mm}$

Reference Value = 19.37 V/m ; Power Drift = -0.07 dB

Peak SAR (extrapolated) = 1.48 W/kg

SAR(1 g) = 0.746 W/kg ; SAR(10 g) = 0.355 W/kg

Maximum value of SAR (measured) = 1.23 W/kg



P23 LTE 26_QPSK15M_Bottom Side_0cm_Ch26865_Keyboard M_1RB_OS0

DUT: 170109C47

Communication System: LTE; Frequency: 831.5 MHz; Duty Cycle: 1:1

Medium: B07T10N1_0523 Medium parameters used: $f = 831.5 \text{ MHz}$; $\sigma = 1.009 \text{ S/m}$; $\epsilon_r = 56.719$; $\rho = 1000 \text{ kg/m}^3$

Ambient Temperature : 23.6 °C ; Liquid Temperature : 23.3 °C

DASY5 Configuration:

- Probe: EX3DV4 - SN3820; ConvF(8.86, 8.86, 8.86); Calibrated: 2016/06/27;
- Sensor-Surface: 1.4mm (Mechanical Surface Detection)
- Electronics: DAE3 Sn360; Calibrated: 2016/11/08
- Phantom: ELI Phantom_1043; Type: QDOVA;
- Measurement SW: DASY52, Version 52.8 (8); SEMCAD X Version 14.6.10 (7373)

- **Area Scan (171x201x1):** Interpolated grid: $dx=1.500 \text{ mm}$, $dy=1.500 \text{ mm}$

Maximum value of SAR (interpolated) = 0.105 W/kg

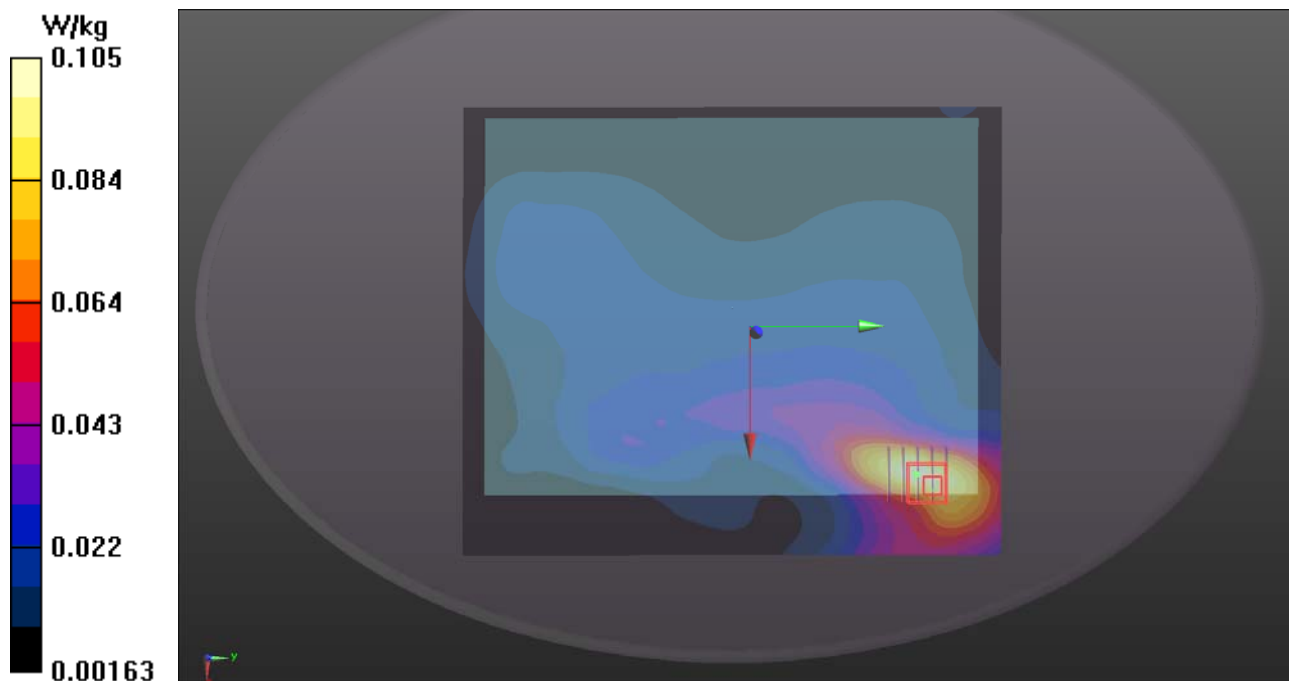
- **Zoom Scan (5x5x7)/Cube 0:** Measurement grid: $dx=8\text{mm}$, $dy=8\text{mm}$, $dz=5\text{mm}$

Reference Value = 10.49 V/m; Power Drift = -0.03 dB

Peak SAR (extrapolated) = 0.359 W/kg

SAR(1 g) = 0.167 W/kg; SAR(10 g) = 0.092 W/kg

Maximum value of SAR (measured) = 0.274 W/kg



P24 LTE 41_QPSK20M_Bottom Side_0cm_Ch41490_Keyboard M_1RB_OS0

DUT: 170109C47

Communication System: LTE TDD CF0; Frequency: 2680 MHz; Duty Cycle: 1:1.58

Medium: B19T27N4_0608 Medium parameters used: $f = 2680$ MHz; $\sigma = 2.301$ S/m; $\epsilon_r = 51.417$; $\rho =$

1000 kg/m³

Ambient Temperature : 23.9 °C ; Liquid Temperature : 23.5 °C

DASY5 Configuration:

- Probe: EX3DV4 - SN3971; ConvF(7.32, 7.32, 7.32); Calibrated: 2017/03/24;
- Sensor-Surface: 1.4mm (Mechanical Surface Detection)
- Electronics: DAE4 Sn1431; Calibrated: 2017/03/20
- Phantom: ELI Phantom_1204; Type: QDOVA;
- Measurement SW: DASY52, Version 52.8 (8); SEMCAD X Version 14.6.10 (7373)

- **Area Scan (211x251x1):** Interpolated grid: dx=1.200 mm, dy=1.200 mm

Maximum value of SAR (interpolated) = 0.0867 W/kg

- **Zoom Scan (5x5x7)/Cube 0:** Measurement grid: dx=8mm, dy=8mm, dz=5mm

Reference Value = 5.566 V/m; Power Drift = -0.07 dB

Peak SAR (extrapolated) = 0.0950 W/kg

SAR(1 g) = 0.048 W/kg; SAR(10 g) = 0.028 W/kg

Maximum value of SAR (measured) = 0.0745 W/kg

