

CHANNEL SCANNING METHOD

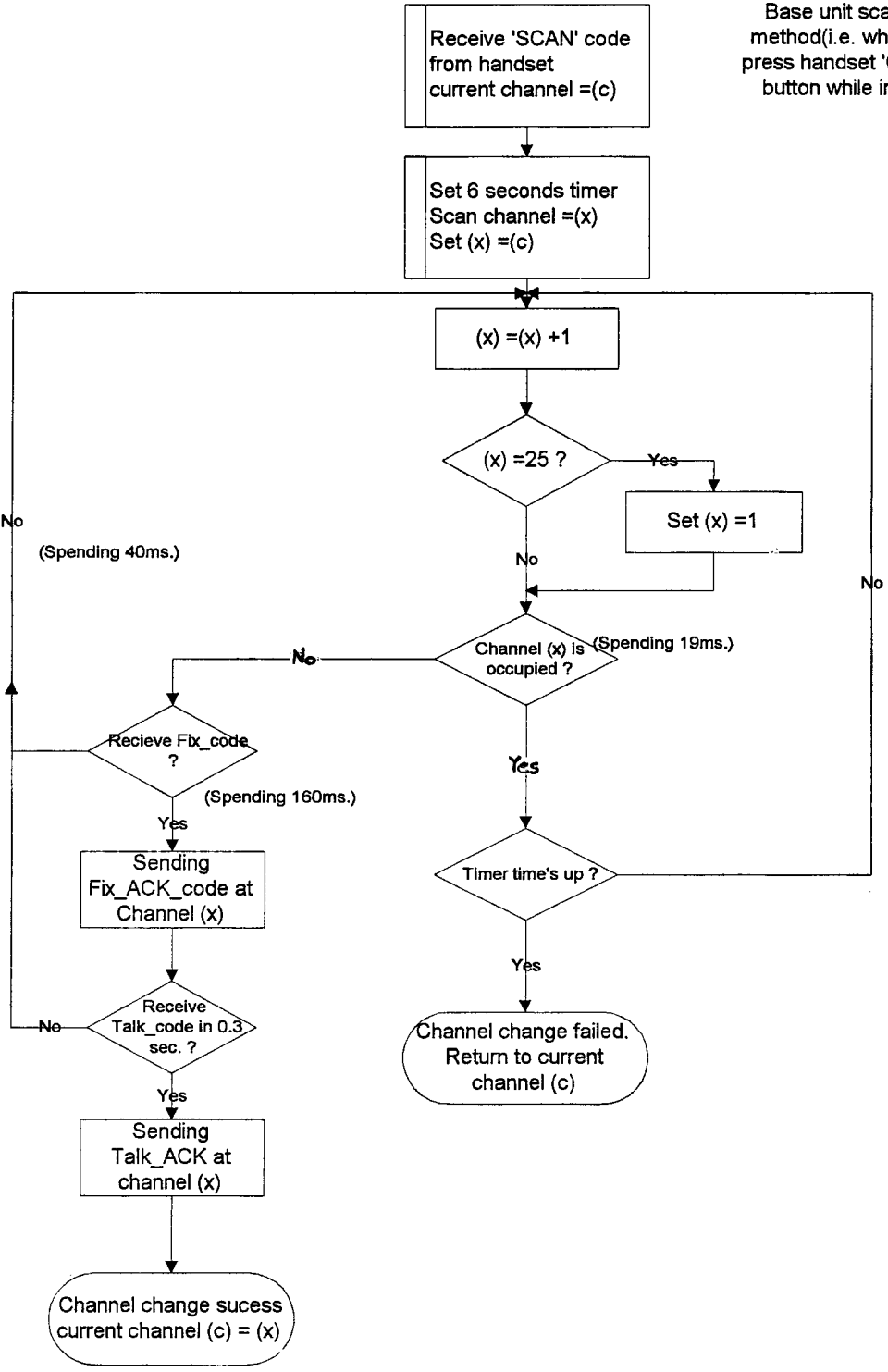
When the base unit is power up and after initialization, the Tx channel no. is decided by the RAM content. If the RAM content holds a value over 25, the unit will preset to channel 25 for communication. The Rx channel will be scan from CH1 to CH25 by one channel step and then repeat.

When handset is power up, the channel assignment is used the same method as those of Base Unit, its Tx and Rx channel stays at the current channel and will not scan. When handset request to talk, it will scan the Rx channel and then try to communicate at current channel first. If the communication is not successful, it will try another two clear channels. If the communication still fails, an error tone of three beeps will be generated.

If for some reasons the unit losses communication, place the Handset to the cradle for a while, the Base Unit will initiate a new security code with a channel no. to the Handset Unit.

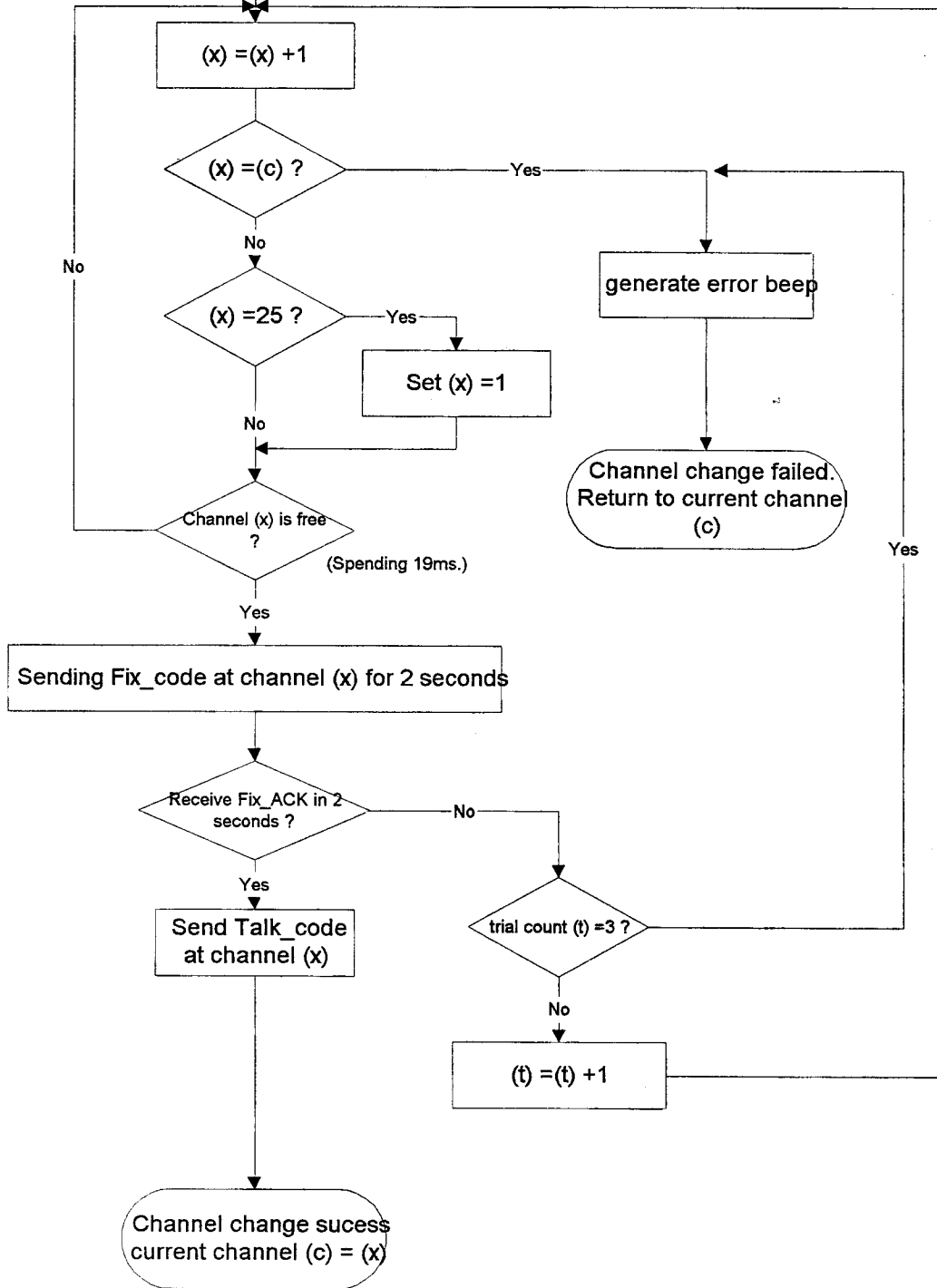
For manual channel change, Handset will send a channel change command to the Base Unit, and then start scanning the next free channel. After receiving the channel change command, the base unit will be scan from CH1 to CH25 and then repeat. If a free channel is found, the handset will stay at the channel and initiate request talk on command and the base will acknowledge the command and stay at the free channel. The channel change process is completed. If they can not communicate at the 1st free channel, the handset will start scanning another free channel and initiate request talk on command again. If they can not communicate at the 3rd free channel, the unit will go back to current channel and an error tone of three beeps will be generated from handset to indicate the channel change process is failure.

Base unit scanning method (i.e. when user press handset 'Channel' button while in-use)



Send 'SCAN' code at current channel (c)
 Set trial count (t) = 1
 Scan channel = (x)
 Set (x) = (c)

Handset scanning method (i.e. when user press 'Channel' button while in-use)



Interference Test Result(CP8331)

INTERFERENCE CHANNEL AT	PHONE PRE-SET CHANNEL AT	PHONE AUTO-SCAN TO CHANNEL AT -13dBm
1	1	2
2	2	3
3	3	4
4	4	5
5	5	6
6	6	7
7	7	8
8	8	9
9	9	10
10	10	11
11	11	12
12	12	13
13	13	14
14	14	15
15	15	16
16	16	17
17	17	18
18	18	19
19	19	20
20	20	21
21	21	22
22	22	23
23	23	24
24	24	25
25	25	1