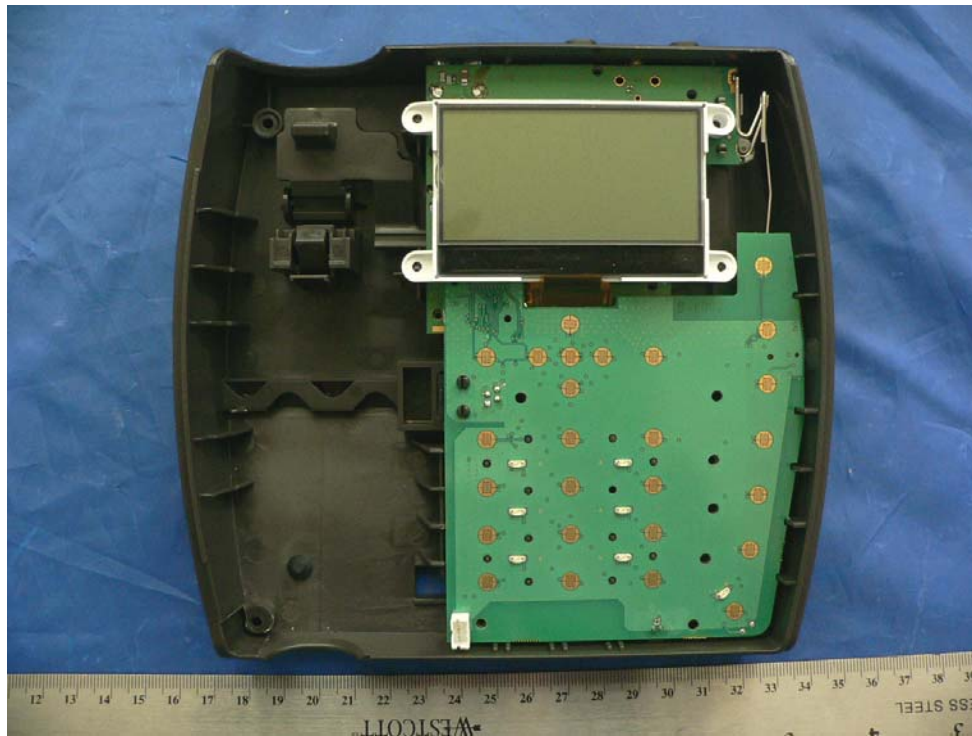
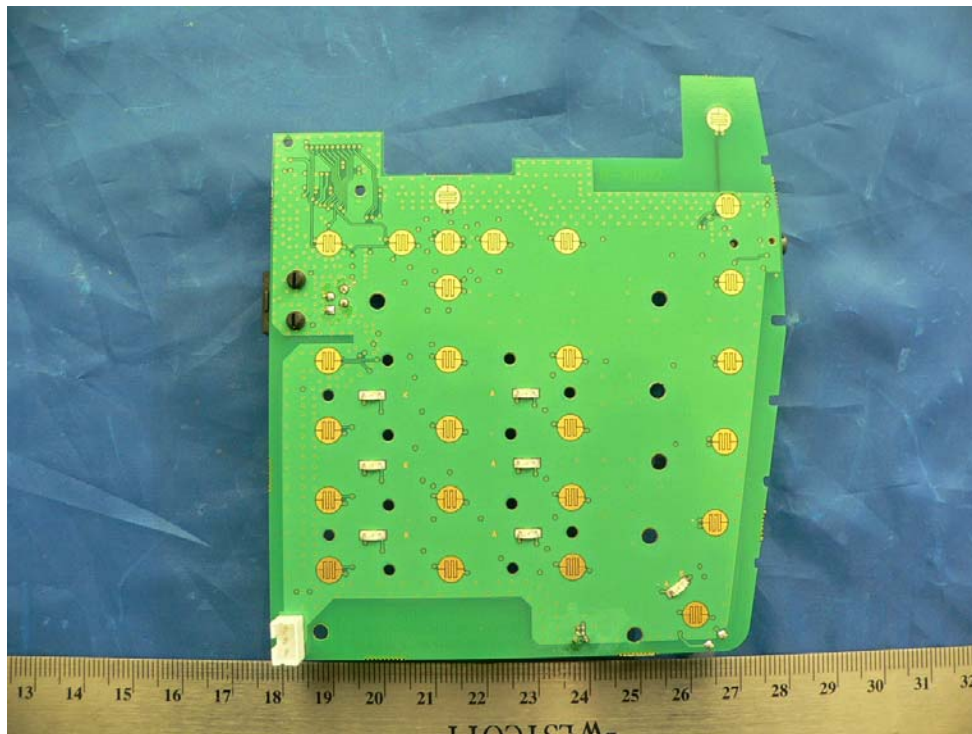
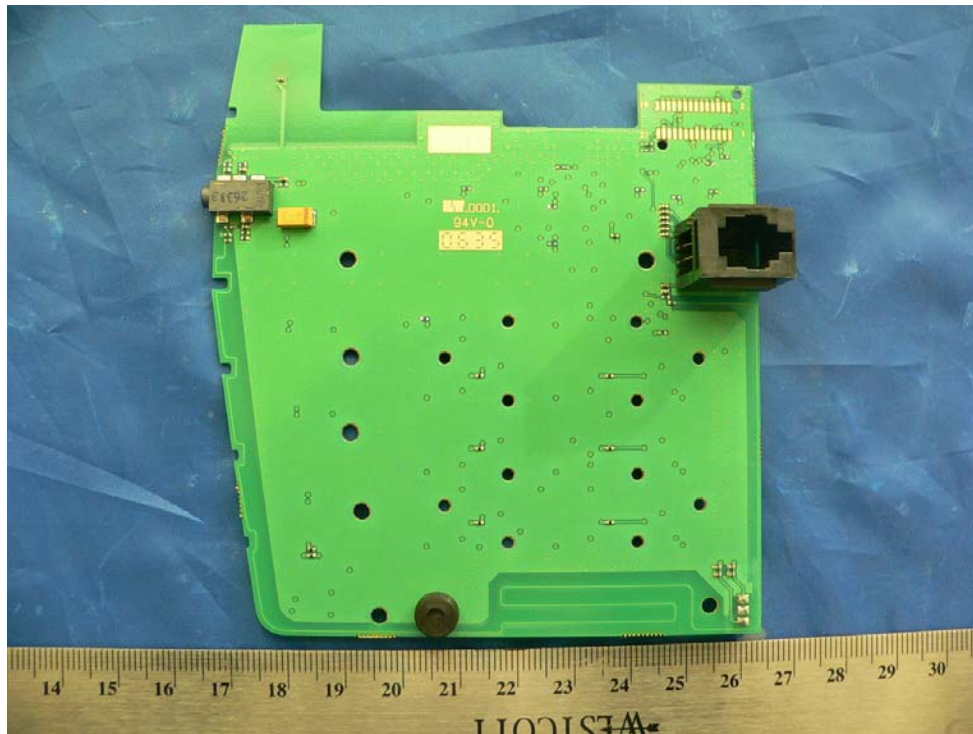
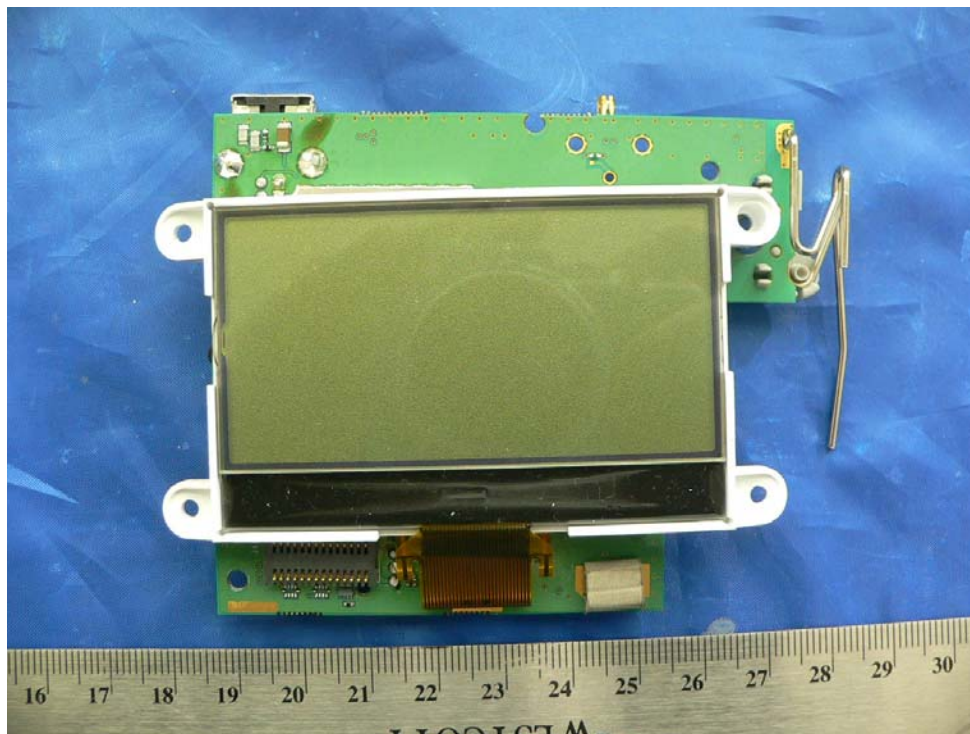
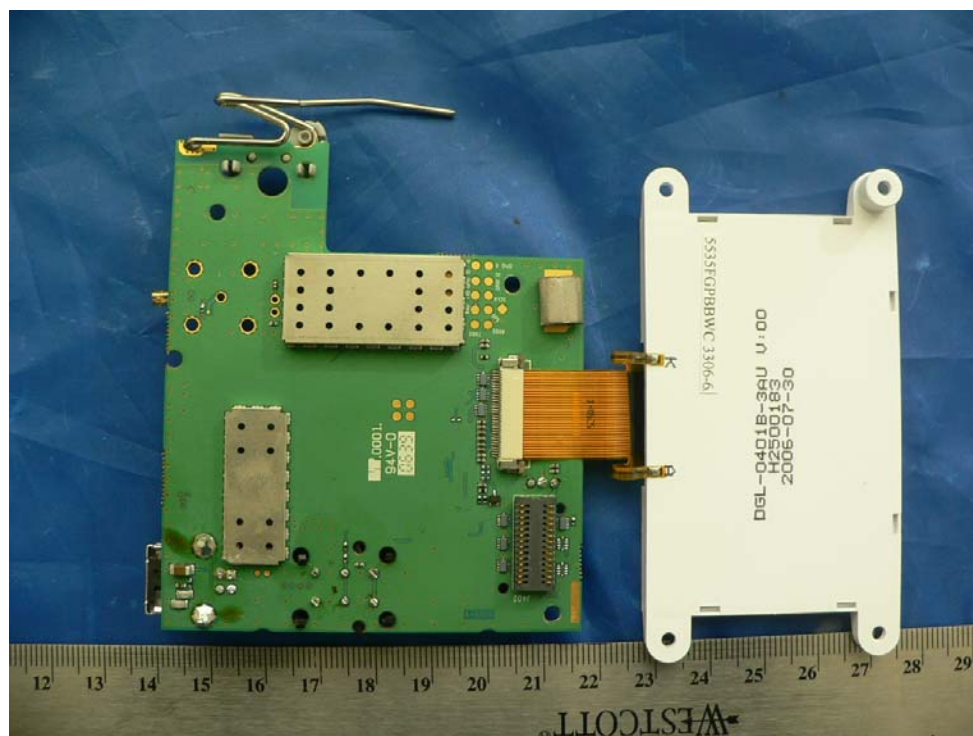
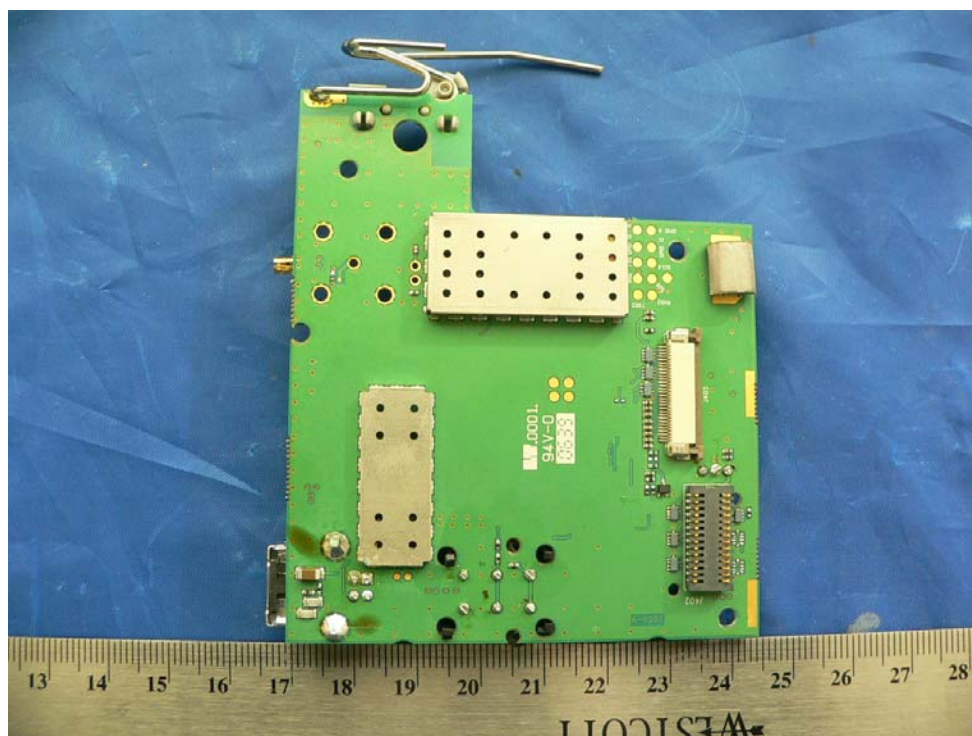
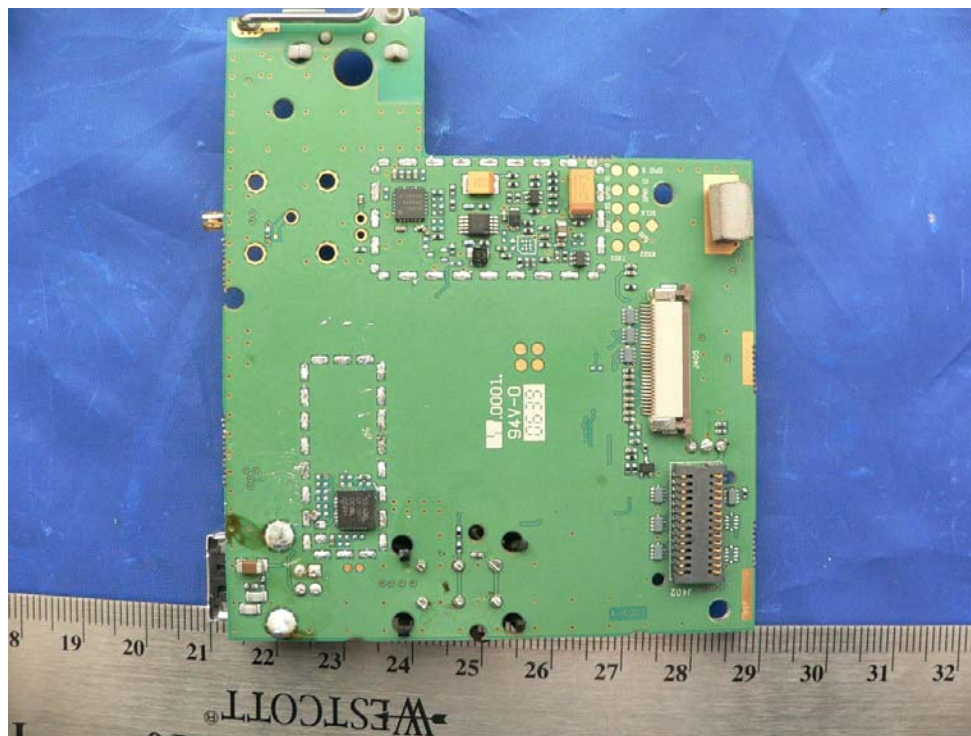
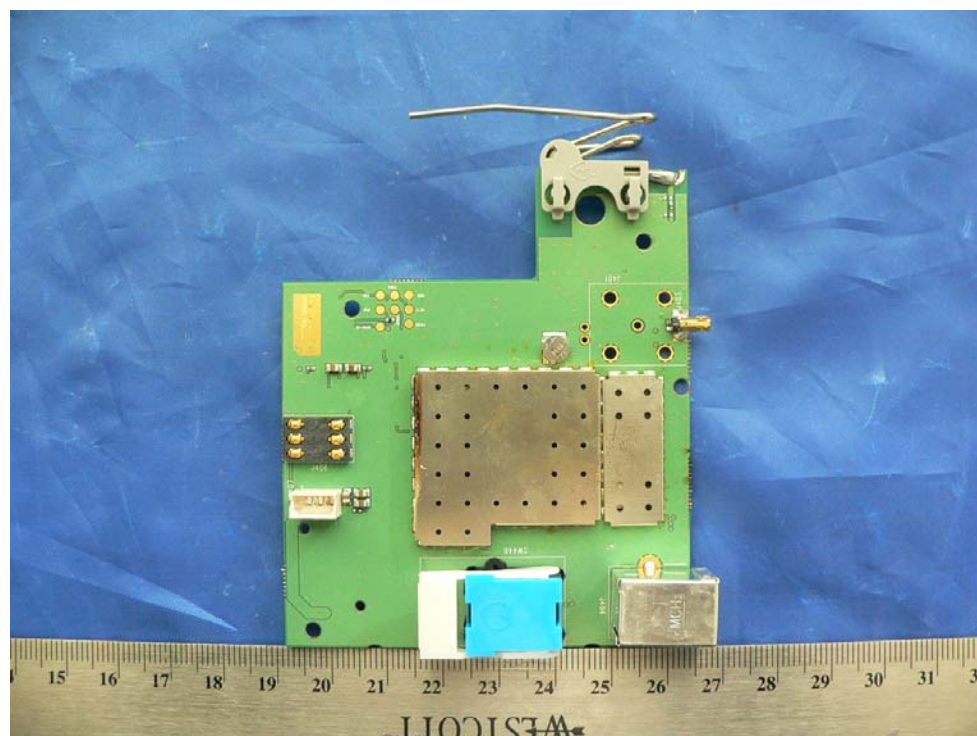


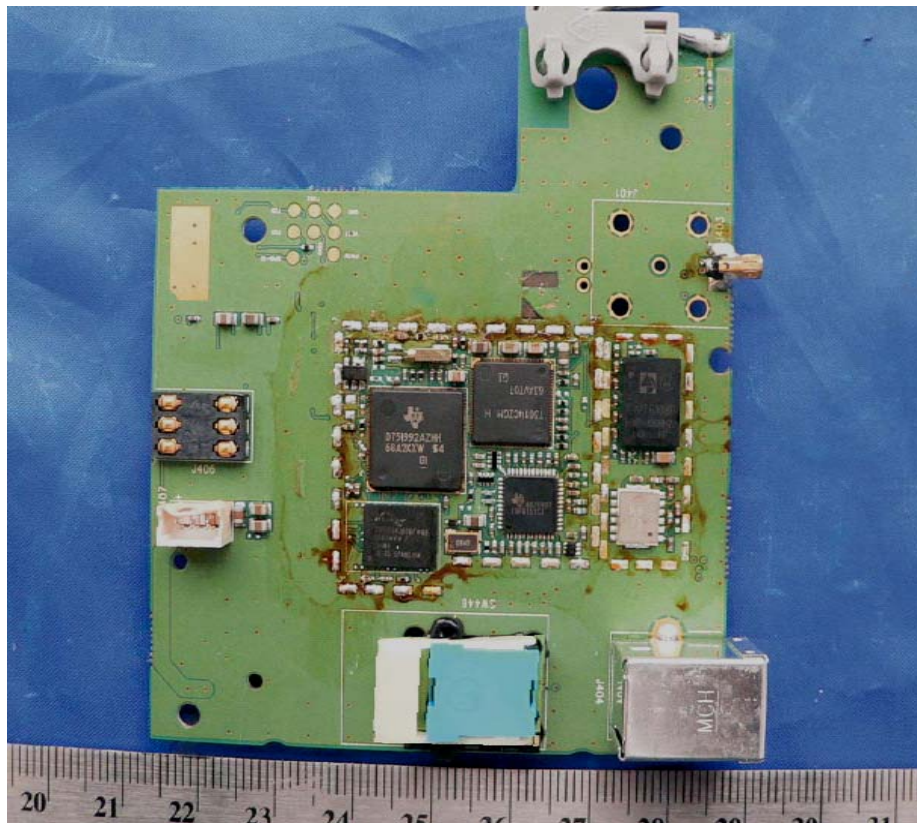
EUT – Head Set Port View**EUT - Cover off View (keypad and speaker connected)**

EUT - Cover off View (keypad removed)**EUT – PCBA 1 Keyboard detail view side 1**

EUT – PCBA 1 Keyboard Component view side 2**EUT – LCD with radio board view 1**

EUT – LCD with radio board view 2**EUT – Radio Board side 1 view 1 (with shielding)**

EUT – Radio Board side 1 view 2 (without shielding)**EUT – Radio Board side 2 view 1 (with shielding)**

EUT – Radio Board side 2 view 2 (without shielding)**EUT – Power Adaptor Side View**

EUT – Power Adaptor Label View

