

## Appendix B - System Performance Check Plots

Test Laboratory: A Test Lab Techno Corp.

Date: 2022/2/8

**System Performance Check at 2450 MHz**

**DUT: Dipole 2450 MHz\_SN712**

Communication System: UID 0, CW (0); Frequency: 2450 MHz; Duty Cycle: 1:1

Medium parameters used:  $f = 2450$  MHz;  $\sigma = 1.79$  S/m;  $\epsilon_r = 39.347$ ;  $\rho = 1000$  kg/m<sup>3</sup>

Phantom section: Flat Section

Measurement Standard: DASYS5 (IEEE/IEC/ANSI C63.19-2007)

DASY5.2 Configuration:

- Area Scan setting - Find Secondary Maximum Within: 2.0dB and with a peak SAR value greater than 0.5 W/Kg
- Probe: EX3DV4 - SN3977; ConvF(7.28, 7.28, 7.28) @ 2450 MHz; Calibrated: 2021/7/26
- Sensor-Surface: 1.4mm (Mechanical Surface Detection)
- Electronics: DAE4 Sn779; Calibrated: 2021/7/30
- Phantom: ELI V4.0; Type: QD OVA 001 BB; Serial: 1036
- Measurement SW: DASYS2, Version 52.10 (4); SEMCAD X Version 14.6.14 (7501)

**System Performance Check at 2450MHz/Area Scan (81x81x1):** Interpolated grid: dx=1.200 mm, dy=1.200 mm

Maximum value of SAR (interpolated) = 21.7 W/kg

**System Performance Check at 2450MHz/Zoom Scan (7x7x7)/Cube 0:** Measurement grid: dx=5mm, dy=5mm, dz=5mm

Reference Value = 113.6 V/m; Power Drift = -0.01 dB

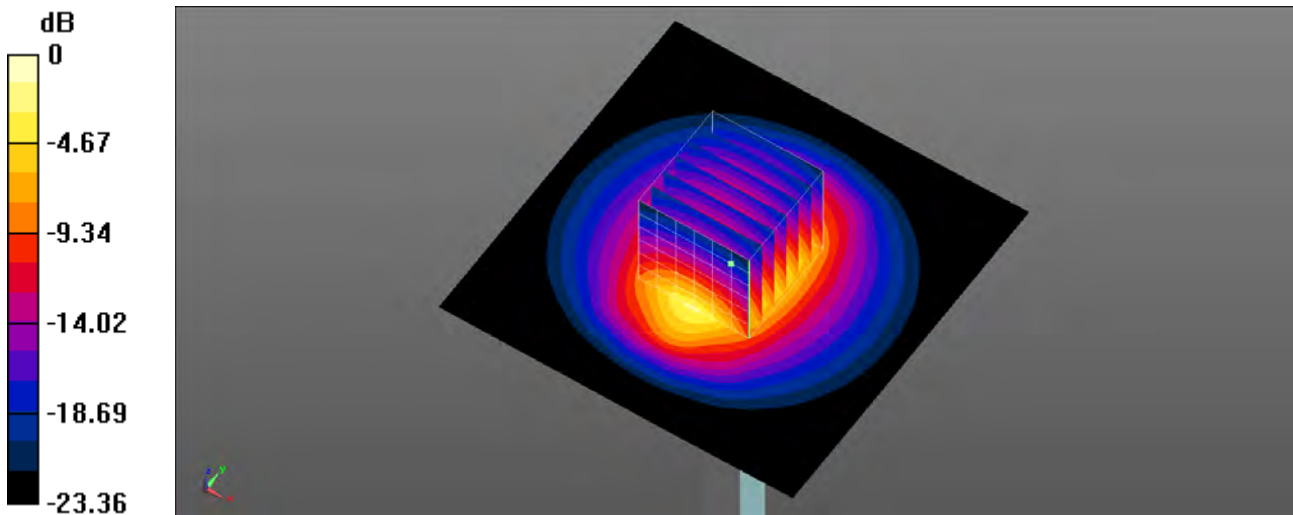
Peak SAR (extrapolated) = 26.9 W/kg

**SAR(1 g) = 12.8 W/kg; SAR(10 g) = 5.94 W/kg**

Smallest distance from peaks to all points 3 dB below = 9 mm

Ratio of SAR at M2 to SAR at M1 = 47.7%

Maximum value of SAR (measured) = 21.7 W/kg



0 dB = 21.7 W/kg = 13.36 dBW/kg

Test Laboratory: A Test Lab Techno Corp.

Date: 2022/2/9

**System Performance Check at 5250 MHz**

**DUT: Dipole 5250 MHz\_SN1021**

Communication System: UID 0, CW (0); Frequency: 5250 MHz; Duty Cycle: 1:1

Medium parameters used:  $f = 5250$  MHz;  $\sigma = 4.701$  S/m;  $\epsilon_r = 36.608$ ;  $\rho = 1000$  kg/m<sup>3</sup>

Phantom section: Flat Section

Measurement Standard: DASYS5 (IEEE/IEC/ANSI C63.19-2007)

DASY5.2 Configuration:

- Area Scan setting - Find Secondary Maximum Within: 2.0dB and with a peak SAR value greater than 0.5 W/Kg
- Probe: EX3DV4 - SN3977; ConvF(5.04, 5.04, 5.04) @ 5250 MHz; Calibrated: 2021/7/26
- Sensor-Surface: 1.4mm (Mechanical Surface Detection)
- Electronics: DAE4 Sn779; Calibrated: 2021/7/30
- Phantom: ELI V4.0; Type: QD OVA 001 BB; Serial: 1036
- Measurement SW: DASYS52, Version 52.10 (4); SEMCAD X Version 14.6.14 (7501)

**System Performance Check at 5250MHz/Area Scan (91x91x1):** Interpolated grid: dx=1.000 mm, dy=1.000 mm

Maximum value of SAR (interpolated) = 20.1 W/kg

**System Performance Check at 5250MHz/Zoom Scan (7x7x7)/Cube 0:** Measurement grid: dx=4mm, dy=4mm, dz=1.4mm

Reference Value = 75.45 V/m; Power Drift = -0.15 dB

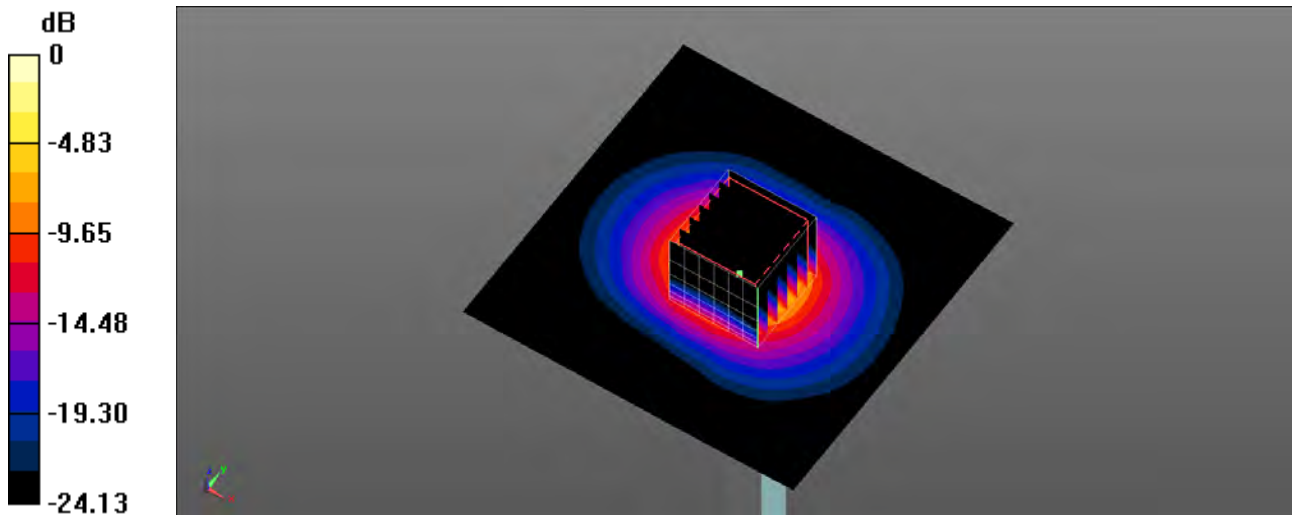
Peak SAR (extrapolated) = 33.4 W/kg

**SAR(1 g) = 7.83 W/kg; SAR(10 g) = 2.14 W/kg**

Smallest distance from peaks to all points 3 dB below = 7.5 mm

Ratio of SAR at M2 to SAR at M1 = 63.1%

Maximum value of SAR (measured) = 19.9 W/kg



0 dB = 19.9 W/kg = 12.99 dBW/kg

Test Laboratory: A Test Lab Techno Corp.

Date: 2022/2/9

**System Performance Check at 5600MHz**

**DUT: Dipole 5600 MHz\_SN1021**

Communication System: UID 0, CW (0); Frequency: 5600 MHz; Duty Cycle: 1:1

Medium parameters used:  $f = 5600$  MHz;  $\sigma = 5.029$  S/m;  $\epsilon_r = 36.131$ ;  $\rho = 1000$  kg/m<sup>3</sup>

Phantom section: Flat Section

Measurement Standard: DASYS5 (IEEE/IEC/ANSI C63.19-2007)

DASY5.2 Configuration:

- Area Scan setting - Find Secondary Maximum Within: 2.0dB and with a peak SAR value greater than 0.5 W/Kg
- Probe: EX3DV4 - SN3977; ConvF(4.61, 4.61, 4.61) @ 5600 MHz; Calibrated: 2021/7/26
- Sensor-Surface: 1.4mm (Mechanical Surface Detection)
- Electronics: DAE4 Sn779; Calibrated: 2021/7/30
- Phantom: ELI V4.0; Type: QD OVA 001 BB; Serial: 1036
- Measurement SW: DASYS2, Version 52.10 (4); SEMCAD X Version 14.6.14 (7501)

**System Performance Check at 5600MHz/Area Scan (91x91x1):** Interpolated grid: dx=1.000 mm, dy=1.000 mm

Maximum value of SAR (interpolated) = 19.5 W/kg

**System Performance Check at 5600MHz/Zoom Scan (7x7x7)/Cube 0:** Measurement grid: dx=4mm, dy=4mm, dz=1.4mm

Reference Value = 71.15 V/m; Power Drift = 0.18 dB

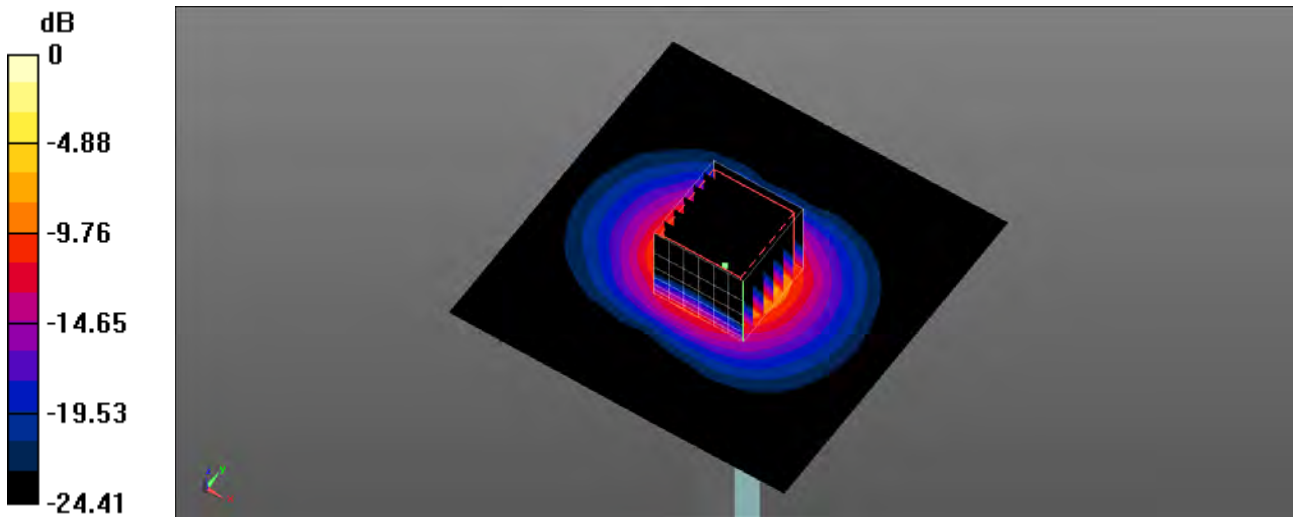
Peak SAR (extrapolated) = 39.2 W/kg

**SAR(1 g) = 8.21 W/kg; SAR(10 g) = 2.21 W/kg**

Smallest distance from peaks to all points 3 dB below = 7.2 mm

Ratio of SAR at M2 to SAR at M1 = 60%

Maximum value of SAR (measured) = 21.5 W/kg



0 dB = 21.5 W/kg = 13.32 dBW/kg

Test Laboratory: A Test Lab Techno Corp.

Date: 2022/2/10

**System Performance Check at 5750 MHz**

**DUT: Dipole 5GHzV2**

Communication System: UID 0, CW (0); Frequency: 5750 MHz;Duty Cycle: 1:1

Medium parameters used:  $f = 5750$  MHz;  $\sigma = 5.3$  S/m;  $\epsilon_r = 35.816$ ;  $\rho = 1000$  kg/m<sup>3</sup>

Phantom section: Flat Section

Measurement Standard: DASYS5 (IEEE/IEC/ANSI C63.19-2007)

DASY5.2 Configuration:

- Area Scan setting - Find Secondary Maximum Within:2.0dB and with a peak SAR value greater than 0.5 W/Kg
- Probe: EX3DV4 - SN3977; ConvF(4.64, 4.64, 4.64) @ 5750 MHz; Calibrated: 2021/7/26
- Sensor-Surface: 1.4mm (Mechanical Surface Detection)
- Electronics: DAE4 Sn779; Calibrated: 2021/7/30
- Phantom: ELI V4.0; Type: QD OVA 001 BB; Serial: 1036
- Measurement SW: DASYS2, Version 52.10 (4); SEMCAD X Version 14.6.14 (7501)

**System Performance Check at 5750MHz/Area Scan (91x91x1):** Interpolated grid: dx=1.000 mm, dy=1.000 mm

Maximum value of SAR (interpolated) = 19.3 W/kg

**System Performance Check at 5750MHz/Zoom Scan (7x7x7)/Cube 0:** Measurement grid: dx=4mm, dy=4mm, dz=1.4mm

Reference Value = 69.03 V/m; Power Drift = 0.07 dB

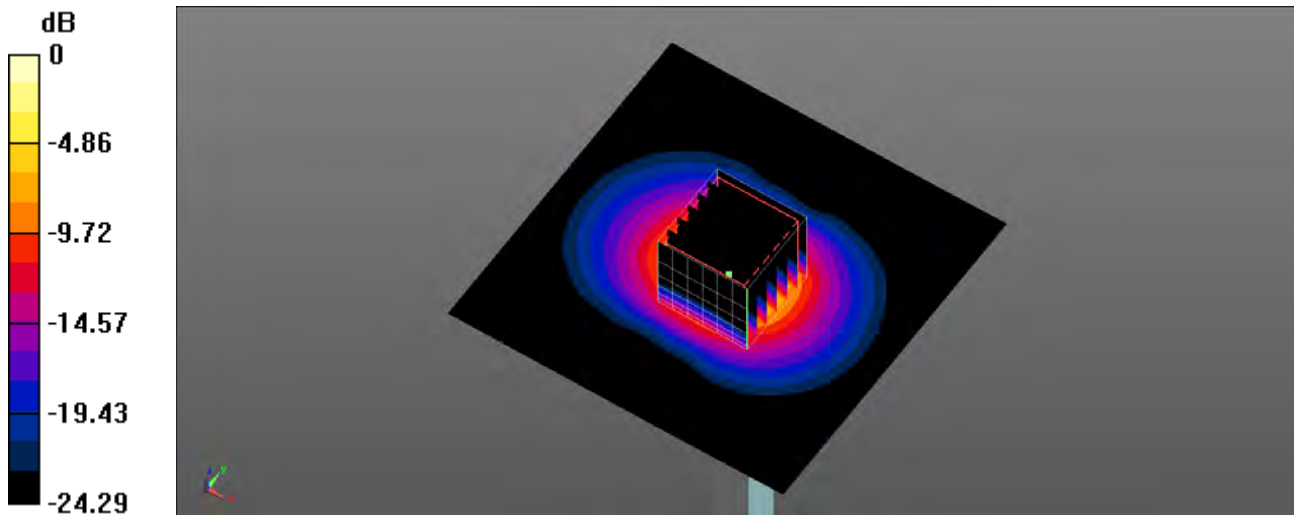
Peak SAR (extrapolated) = 37.2 W/kg

**SAR(1 g) = 7.67 W/kg; SAR(10 g) = 2.07 W/kg**

Smallest distance from peaks to all points 3 dB below = 7.5 mm

Ratio of SAR at M2 to SAR at M1 = 59%

Maximum value of SAR (measured) = 20.5 W/kg



0 dB = 20.5 W/kg = 13.12 dBW/kg