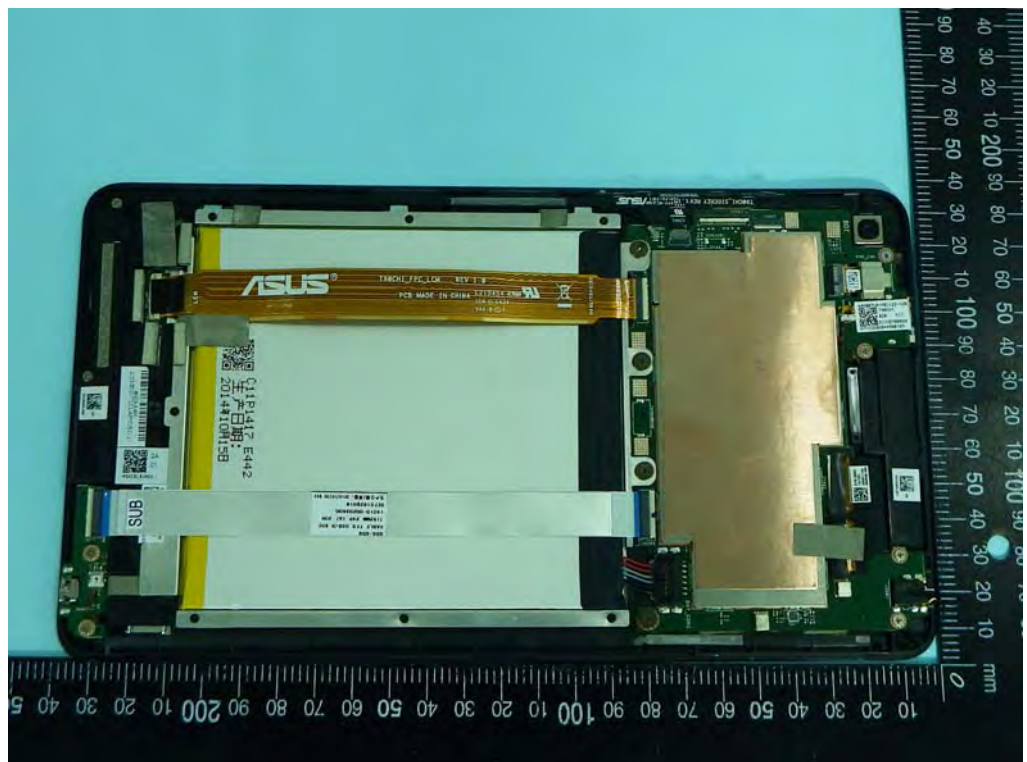
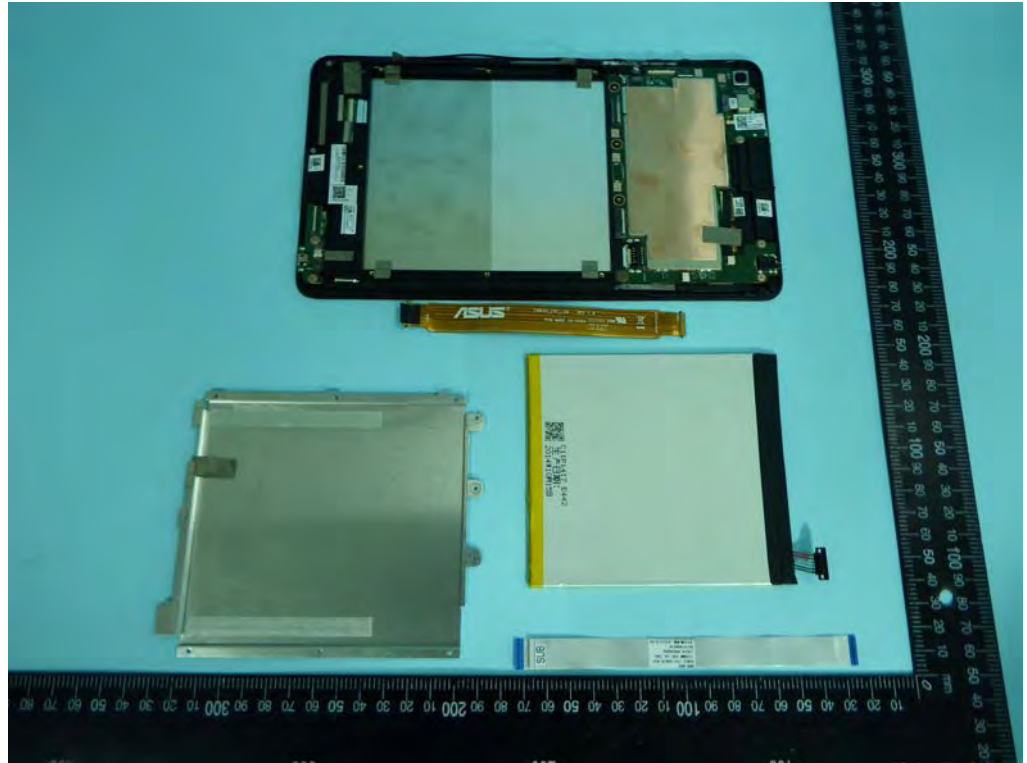
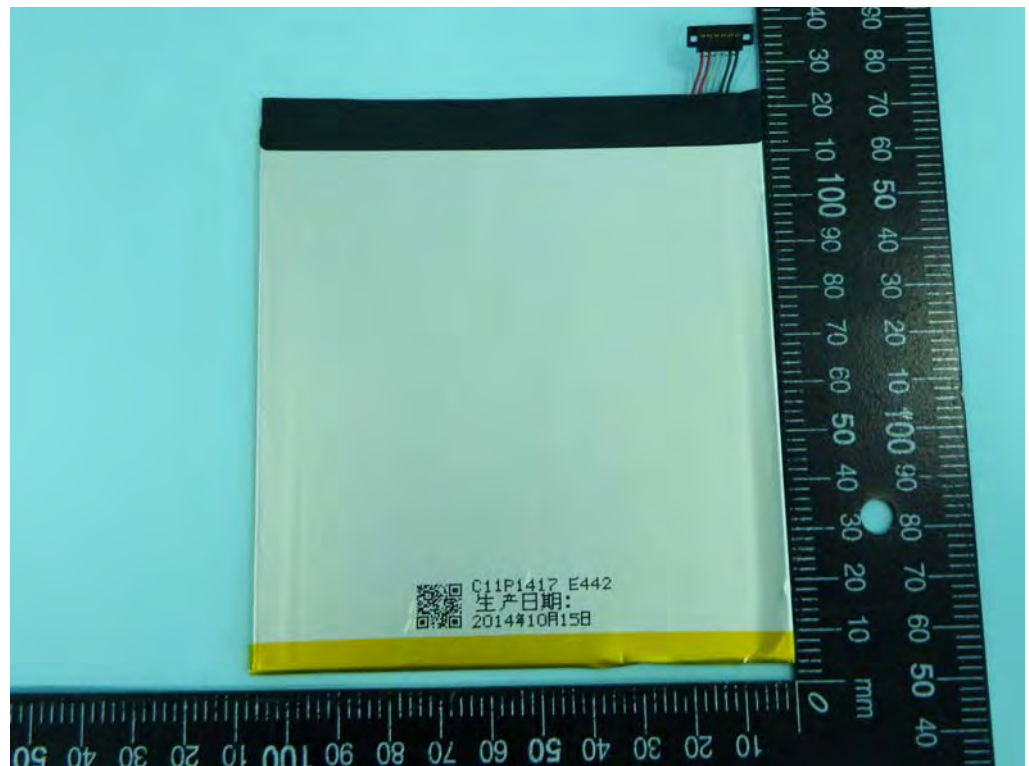


SKU. 2

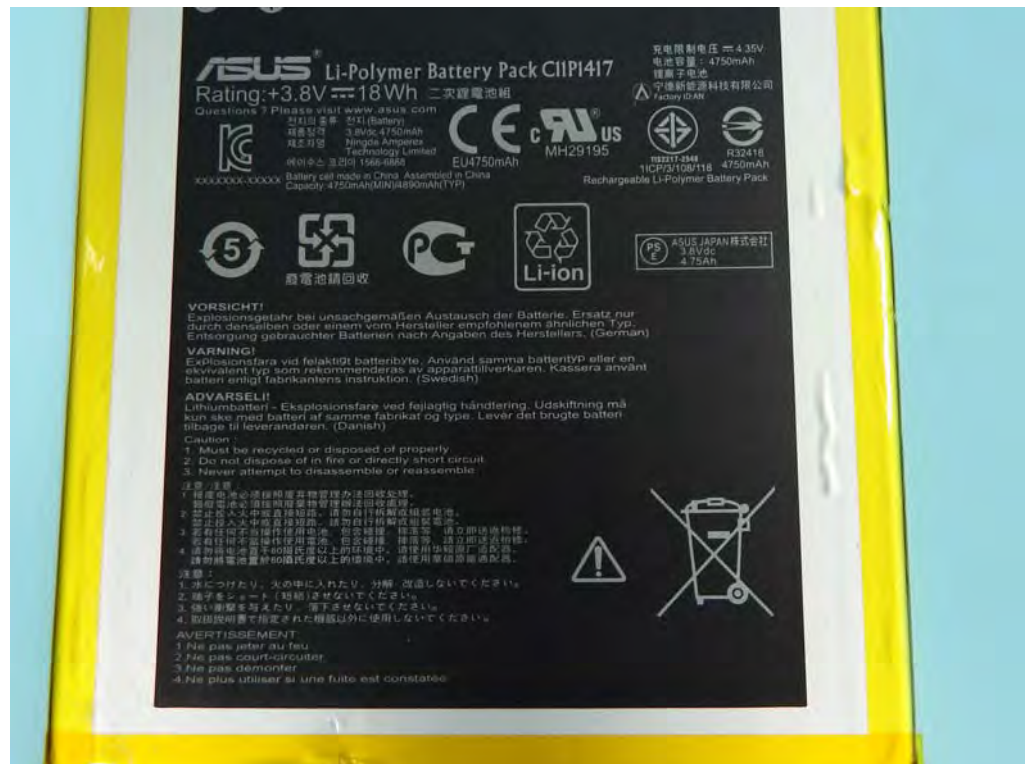


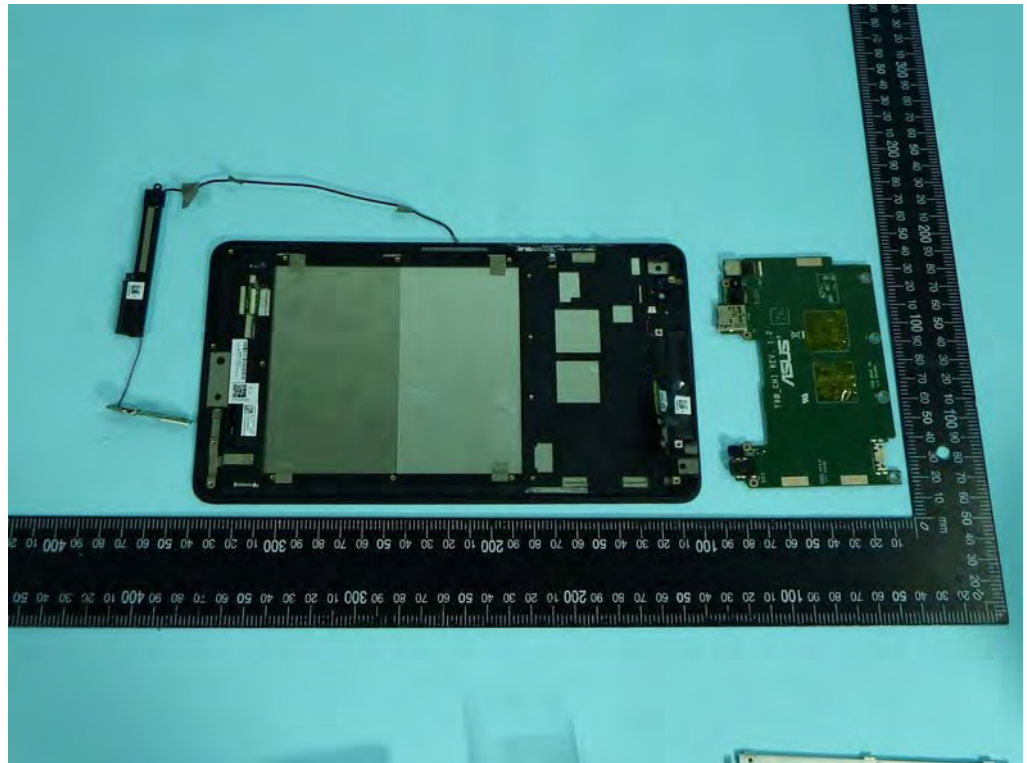




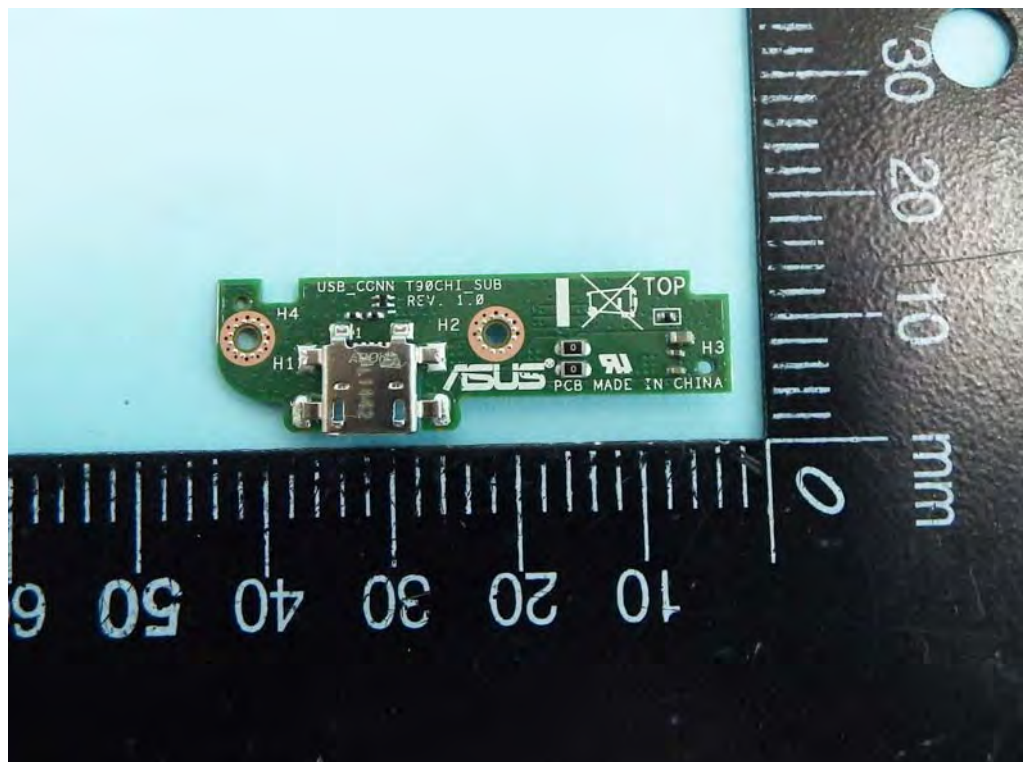
Battery
Li-Polymer Battery Pack /
C11P1417

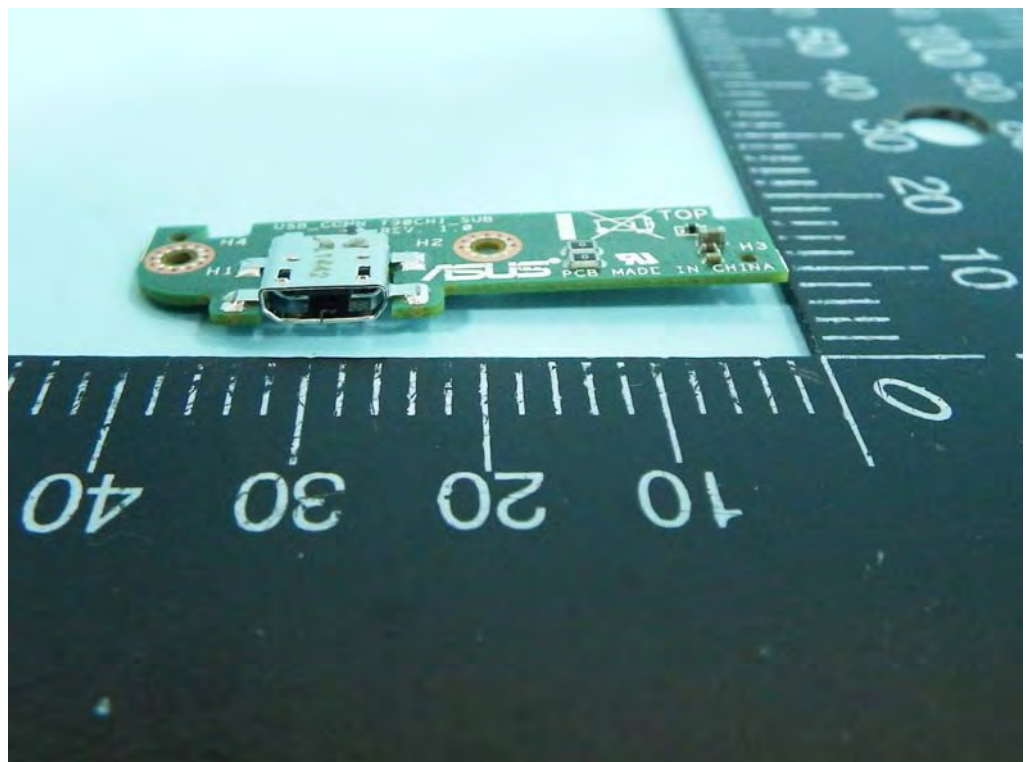
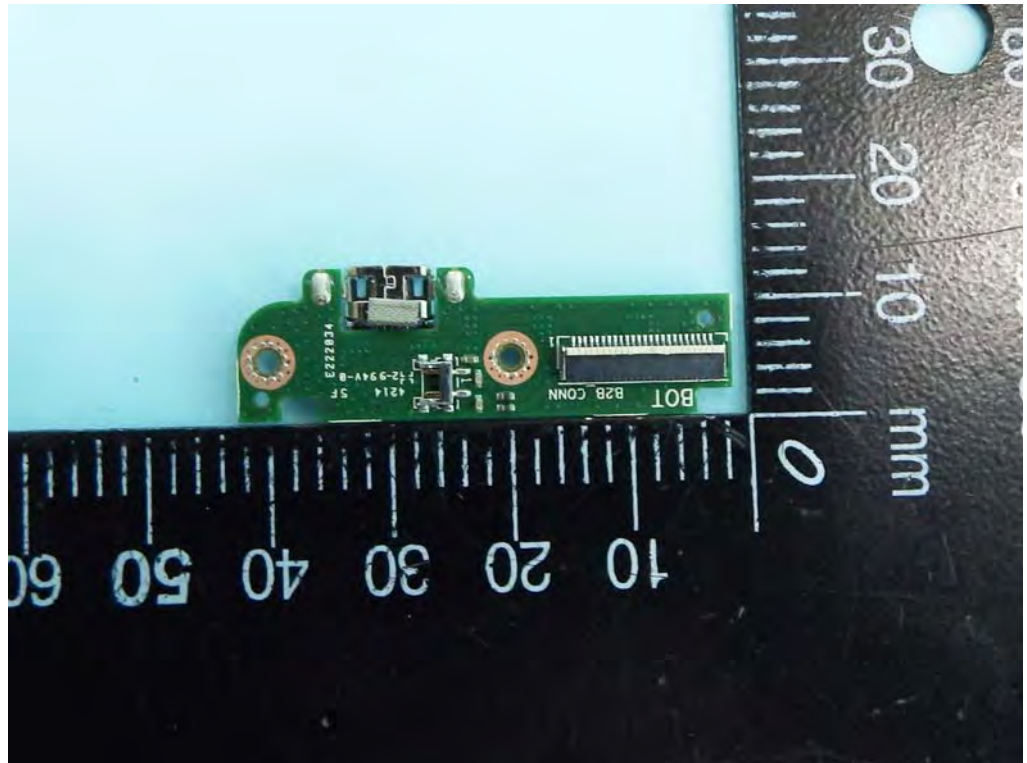


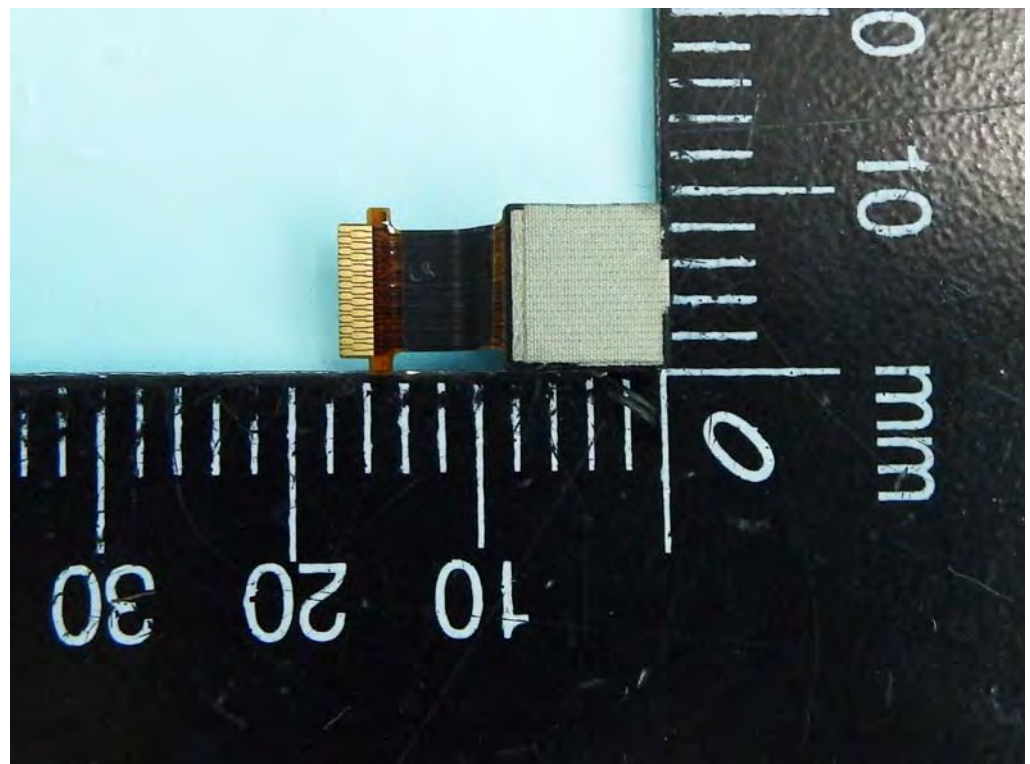
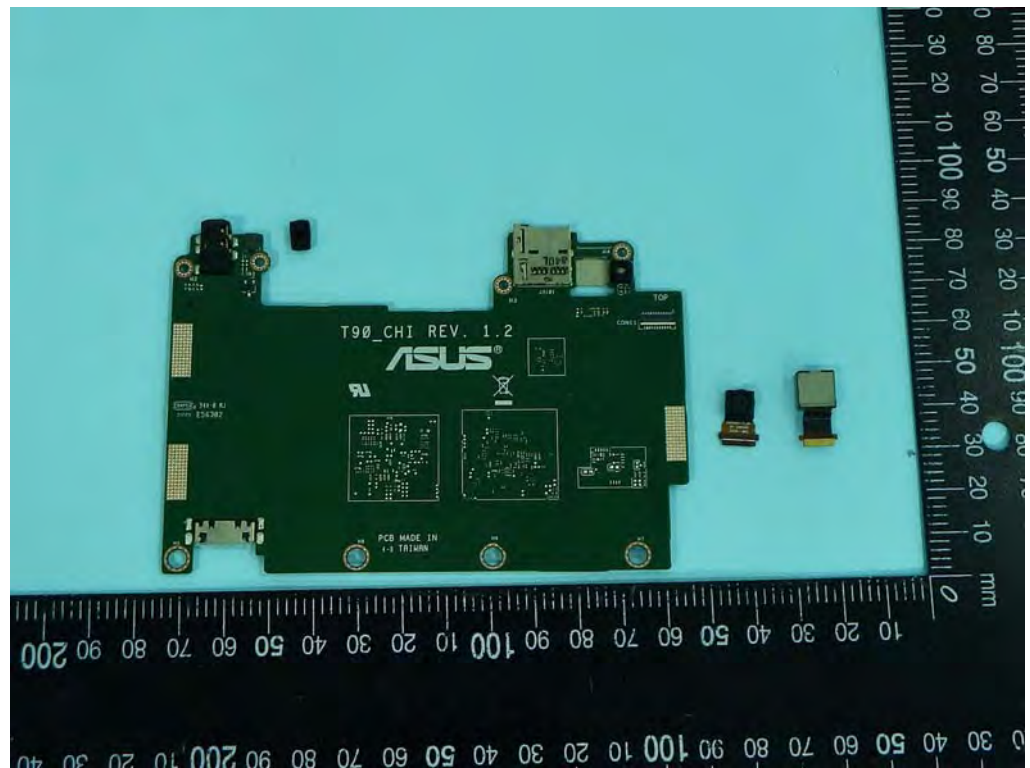


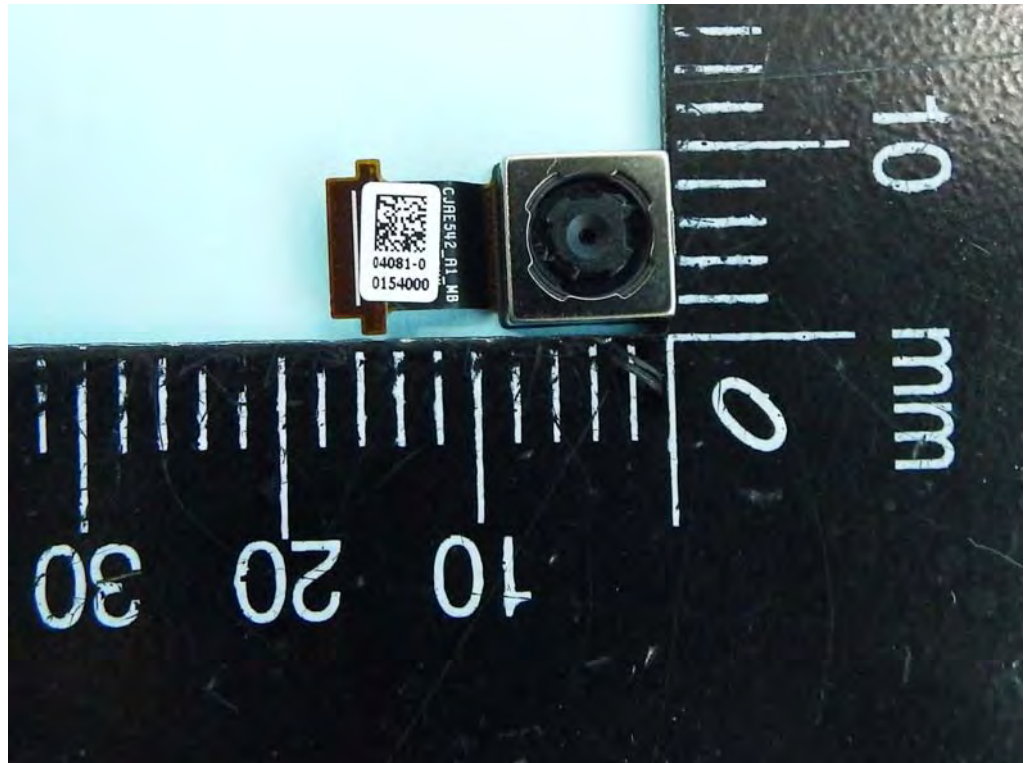


USB Board P/N
T90CHI SUB /REV 1.0

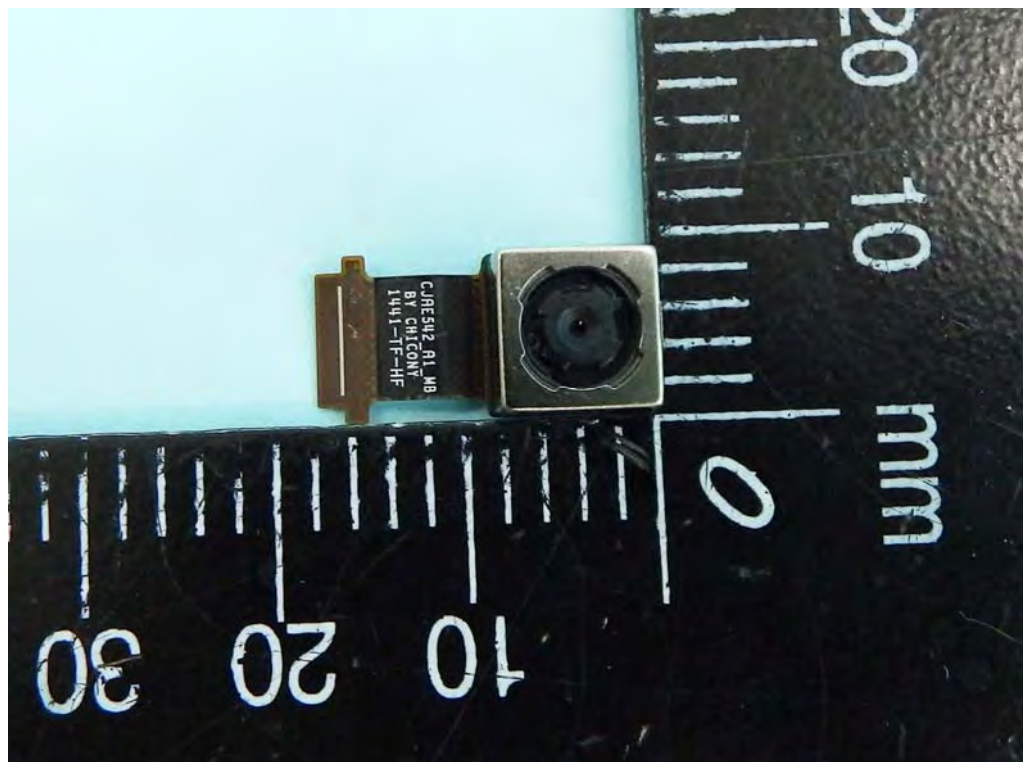


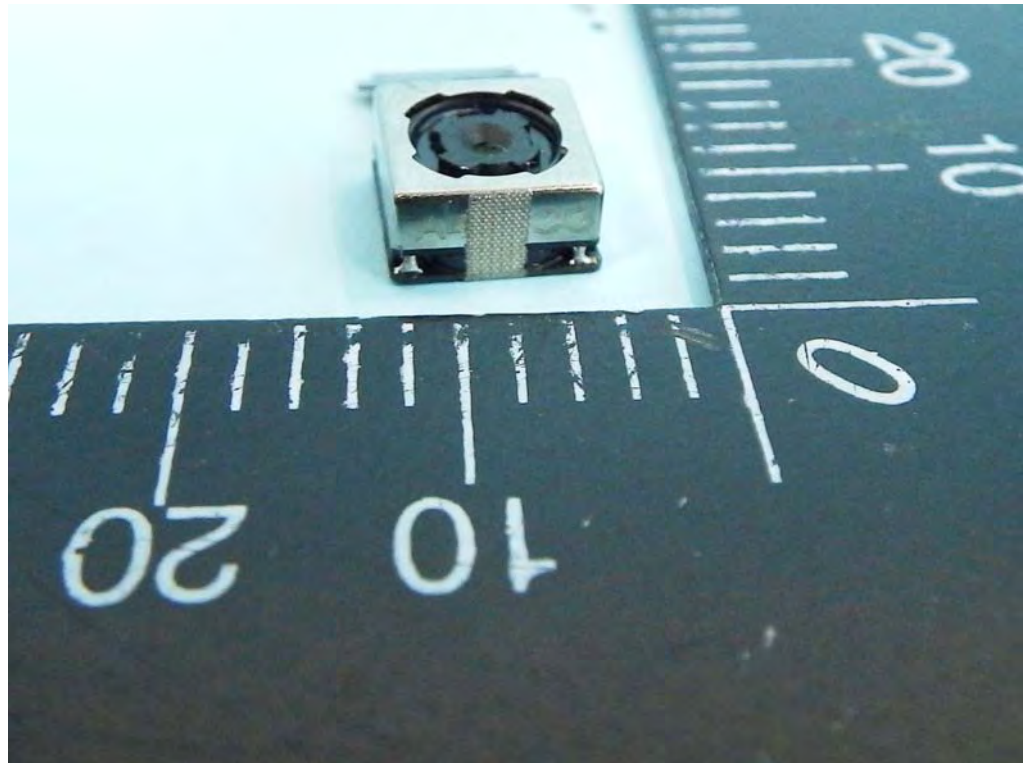




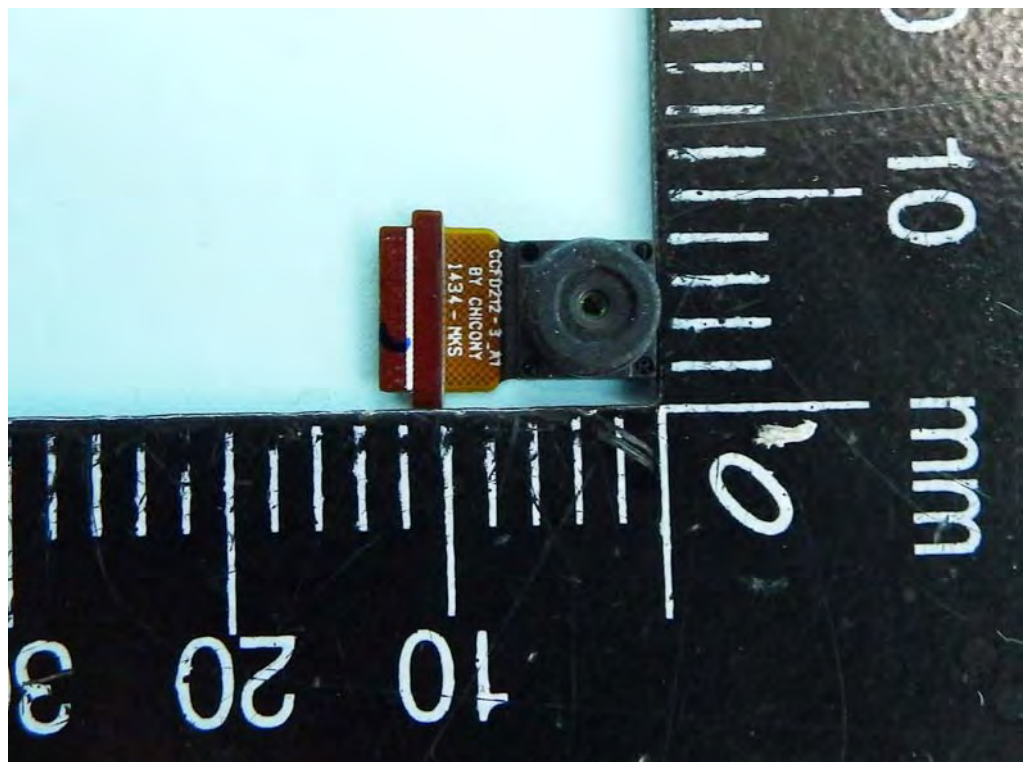


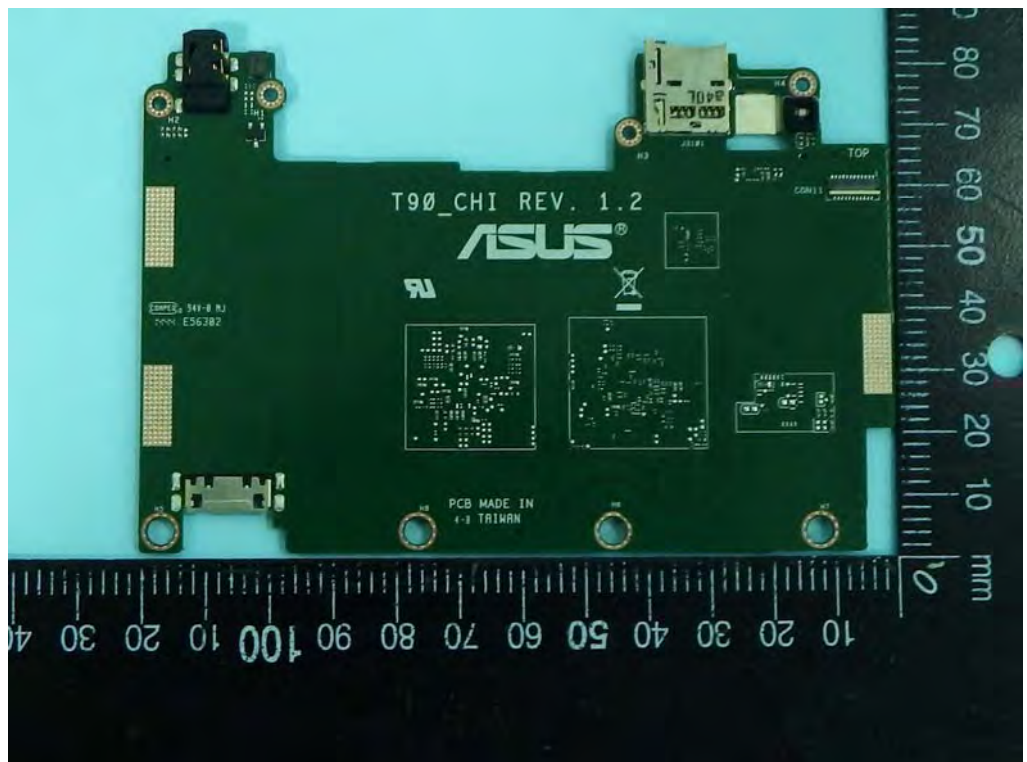
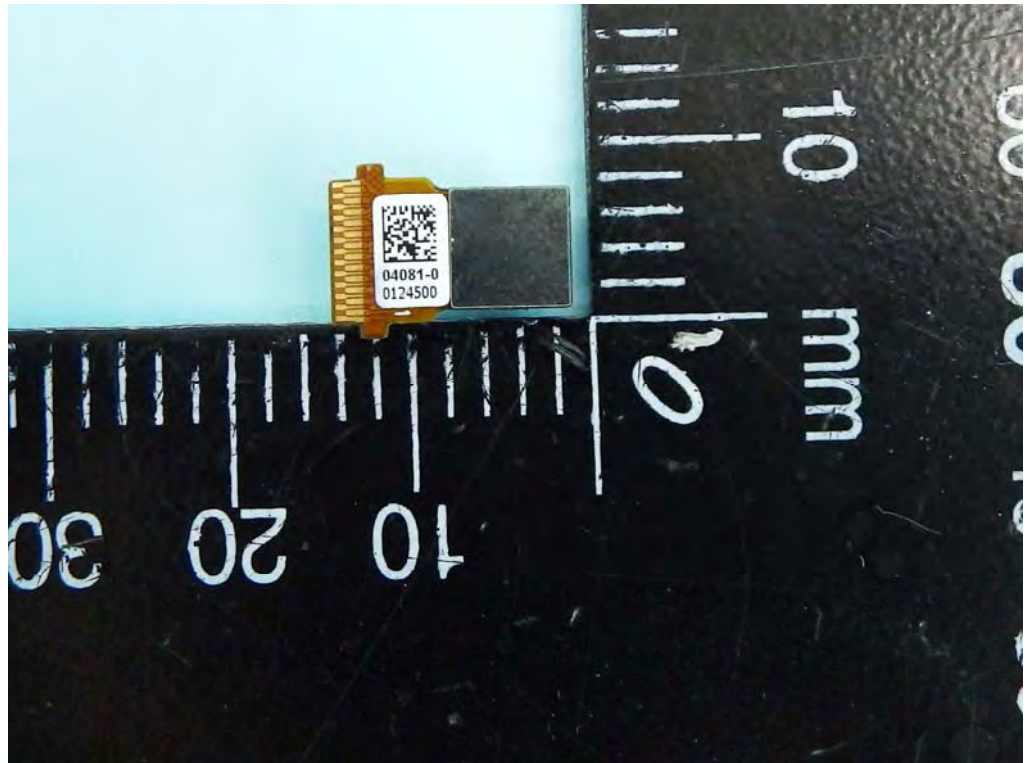
Rear Camera 5M
CHICONY/CJAE54220
003870LH

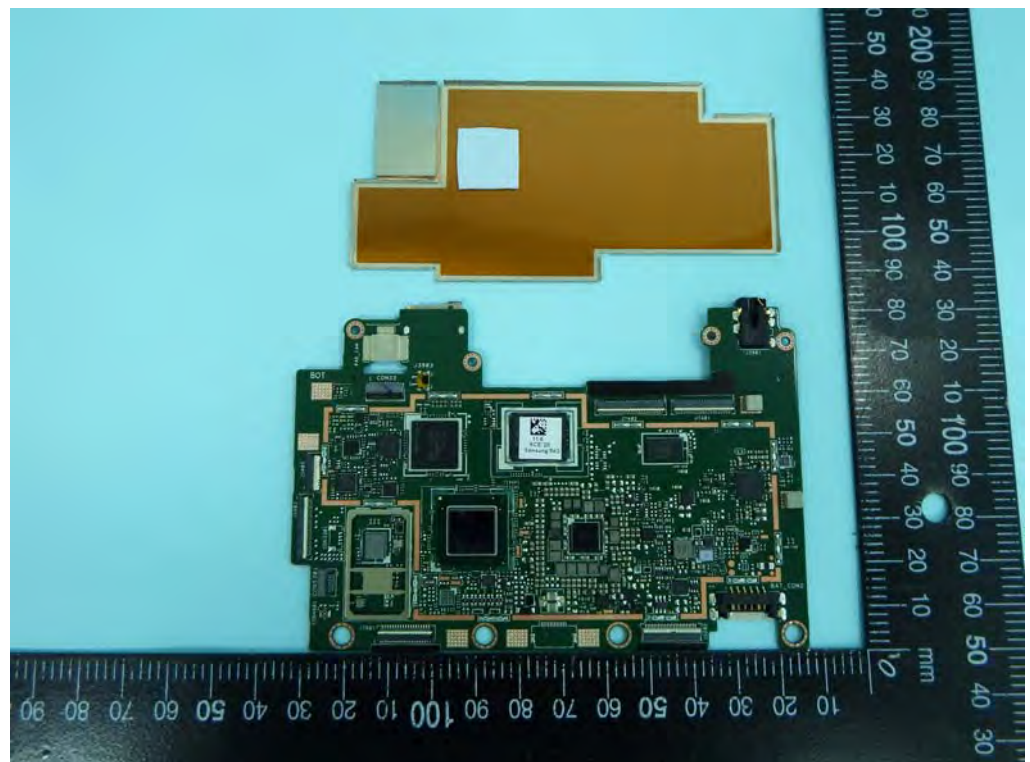
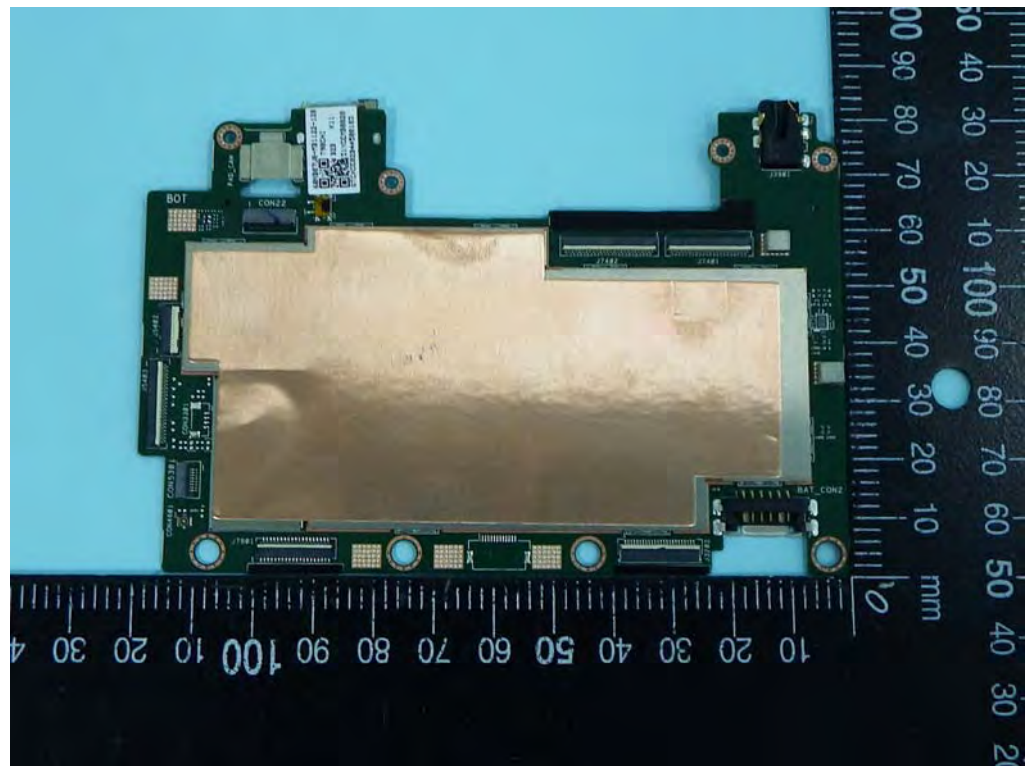


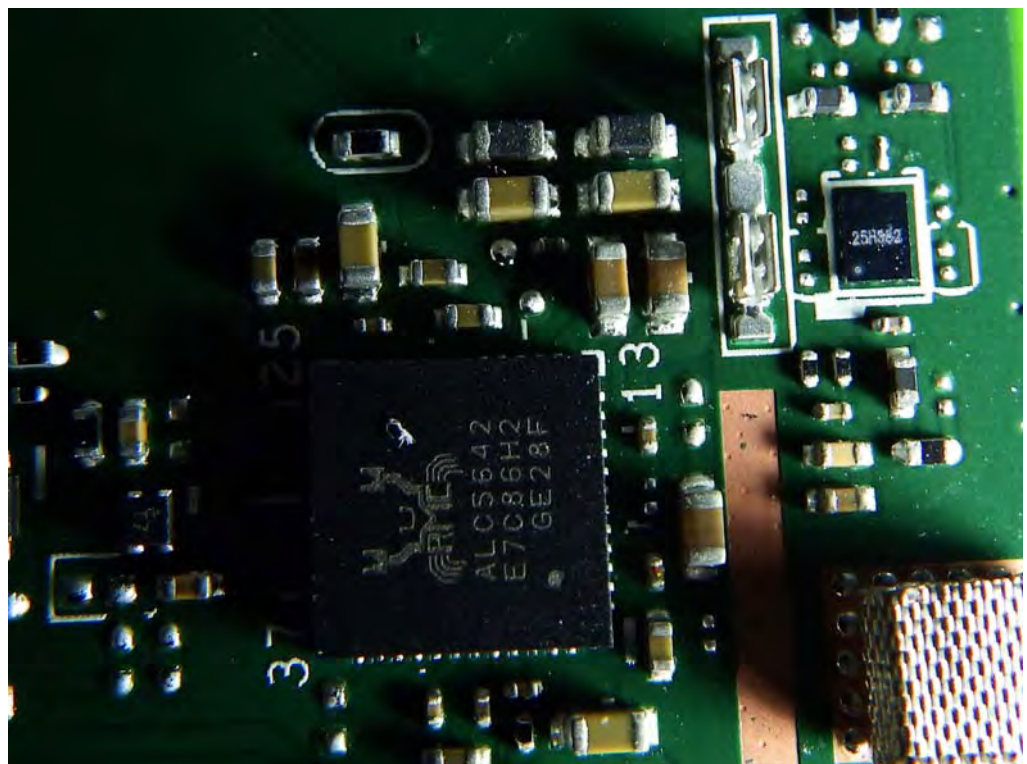
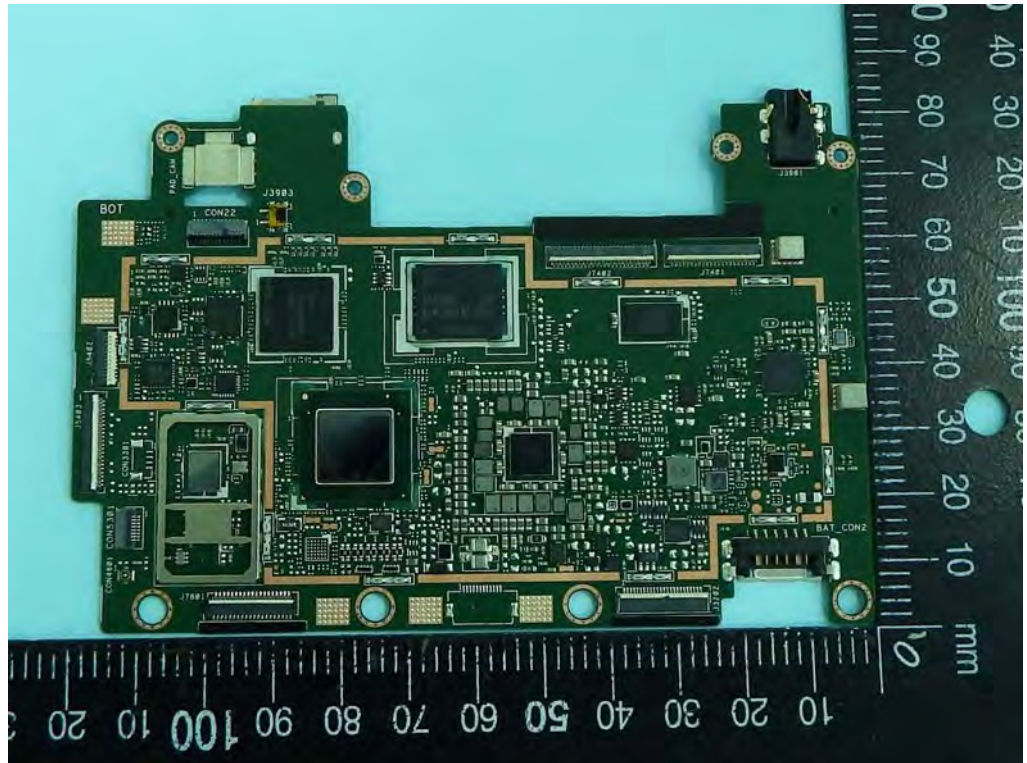


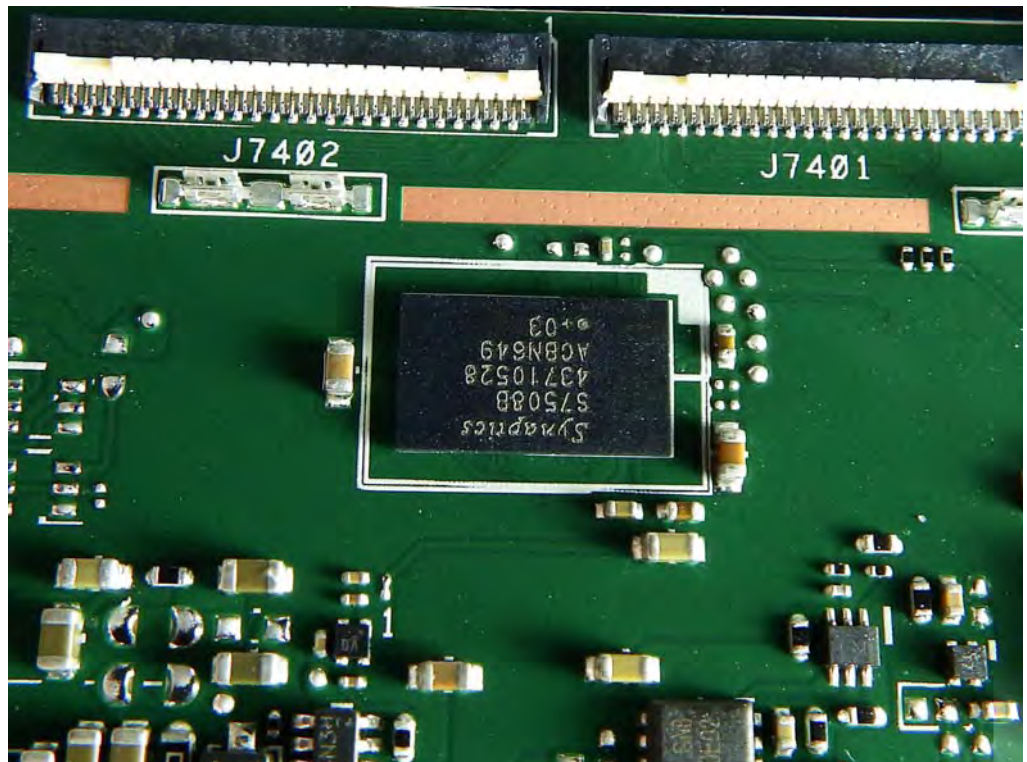
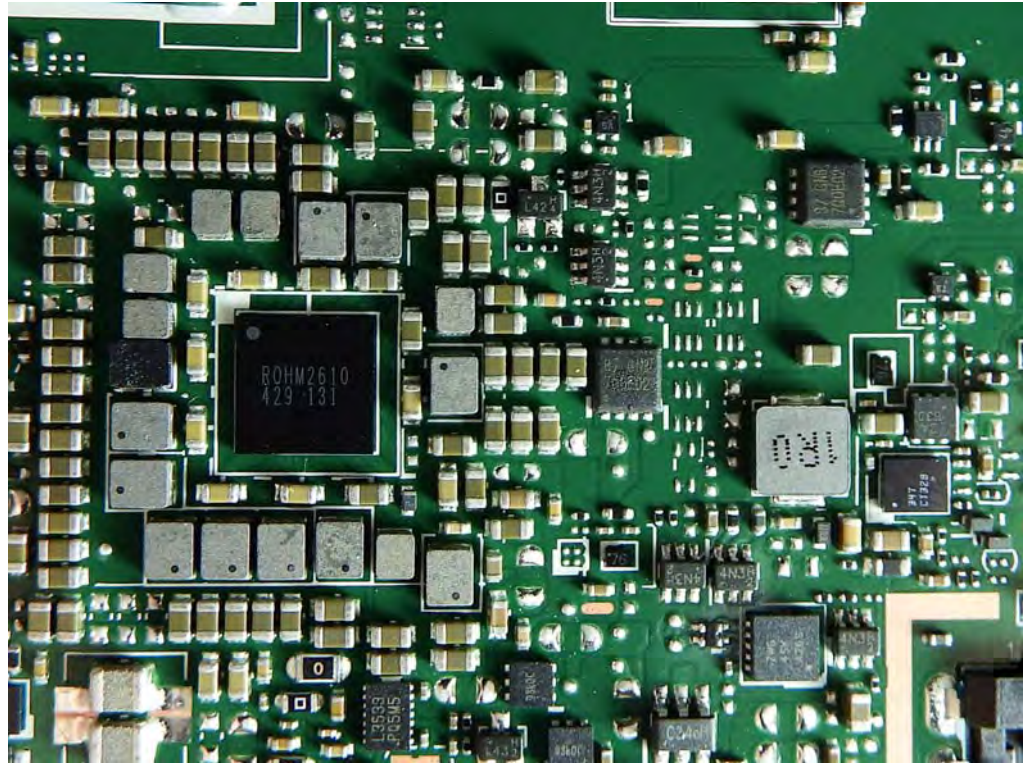
Front Camera 2M
CHICONY/
CCFD21220003873LH



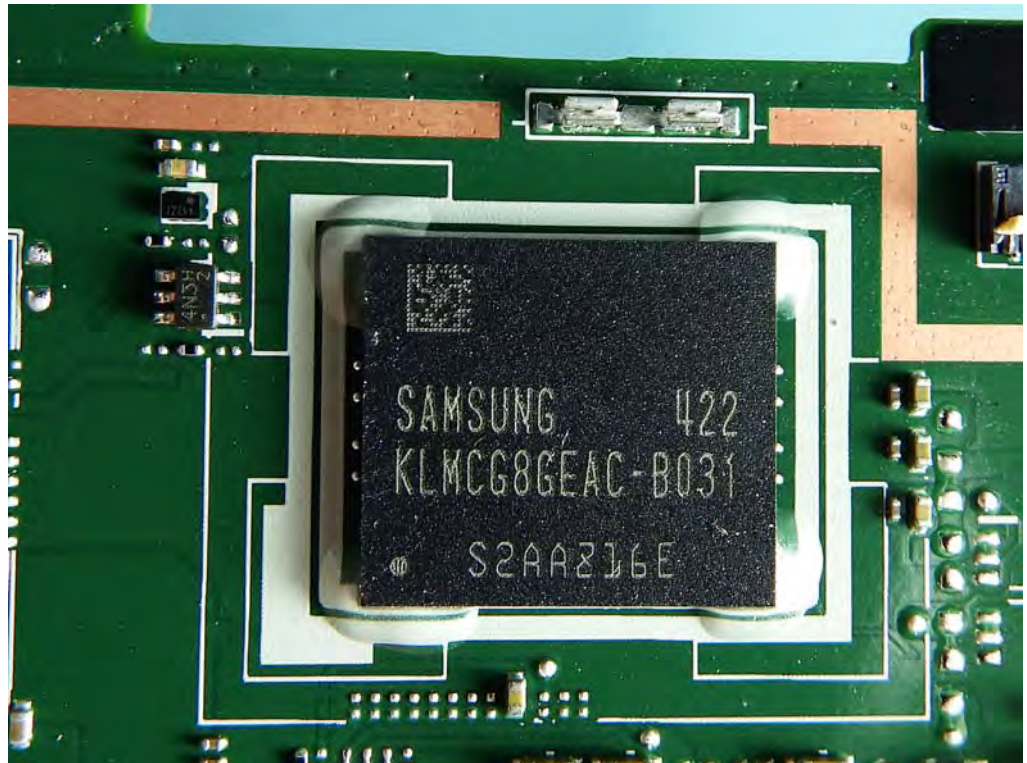




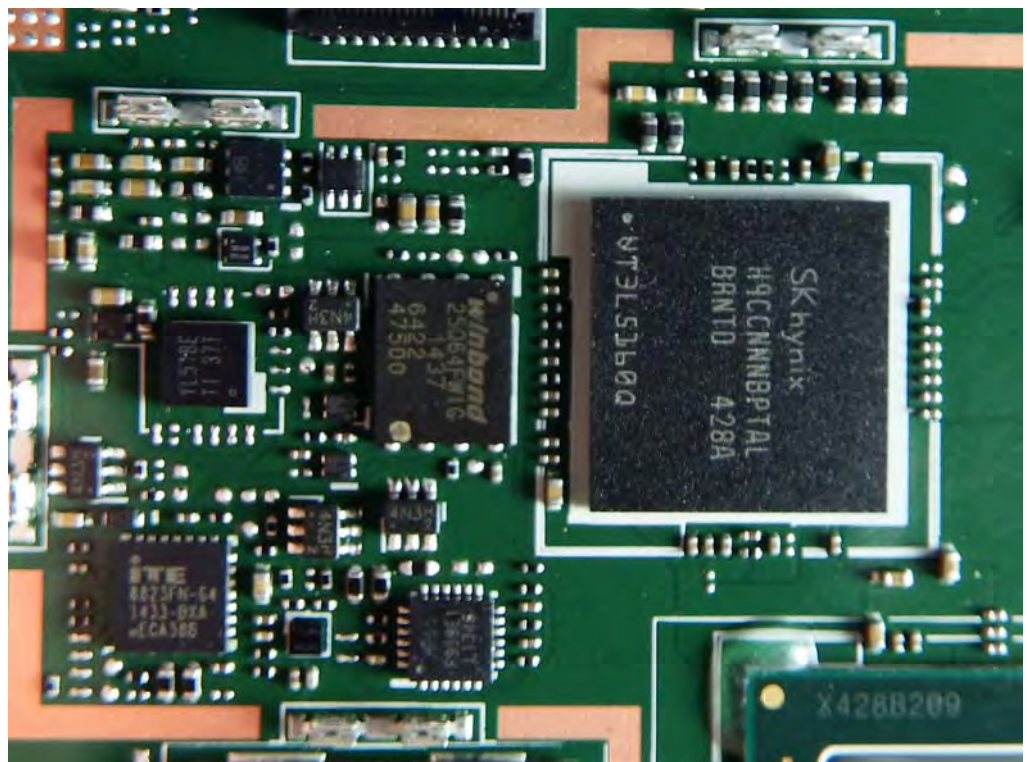


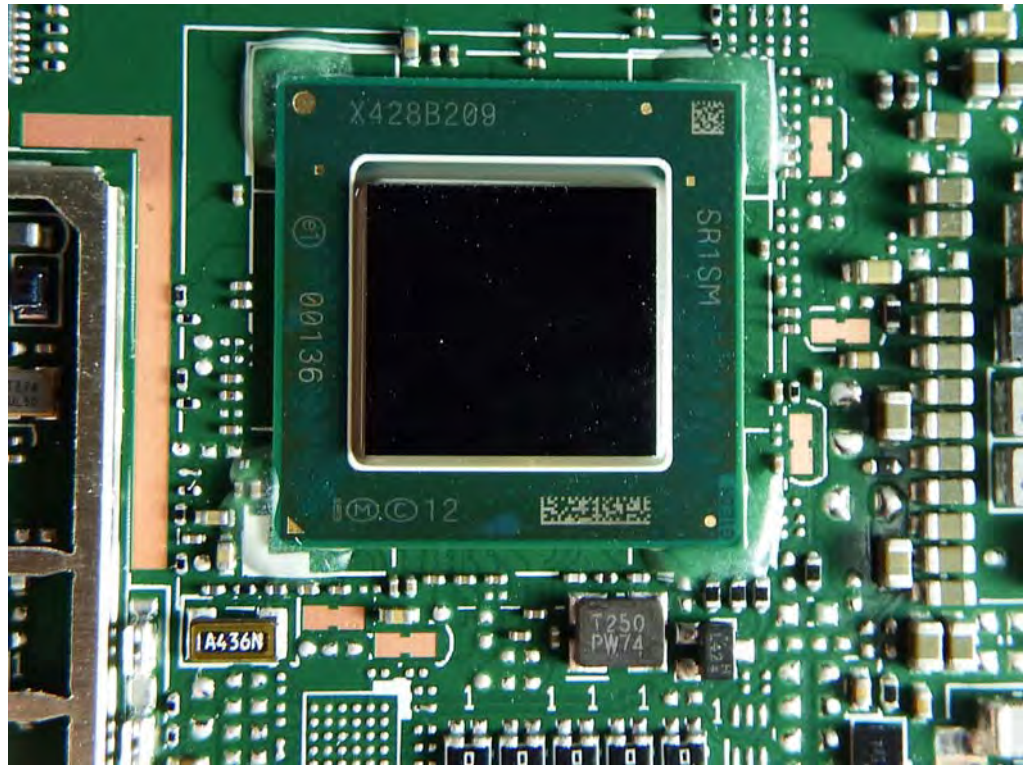


eMMC
SAMSUNG /64G

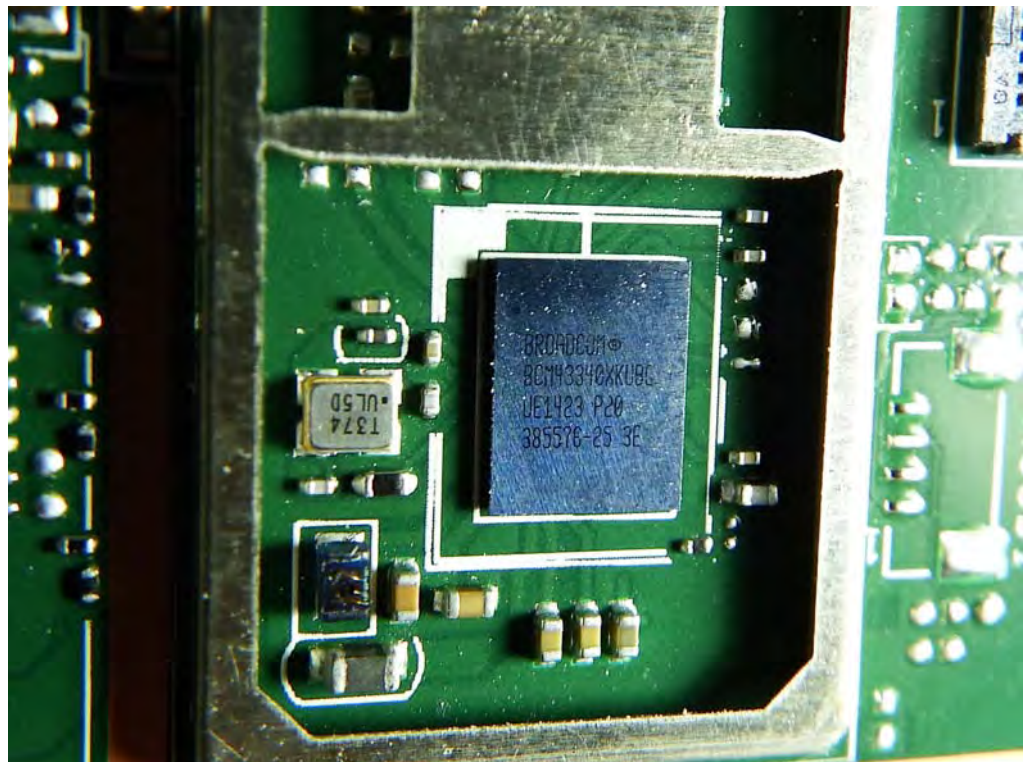


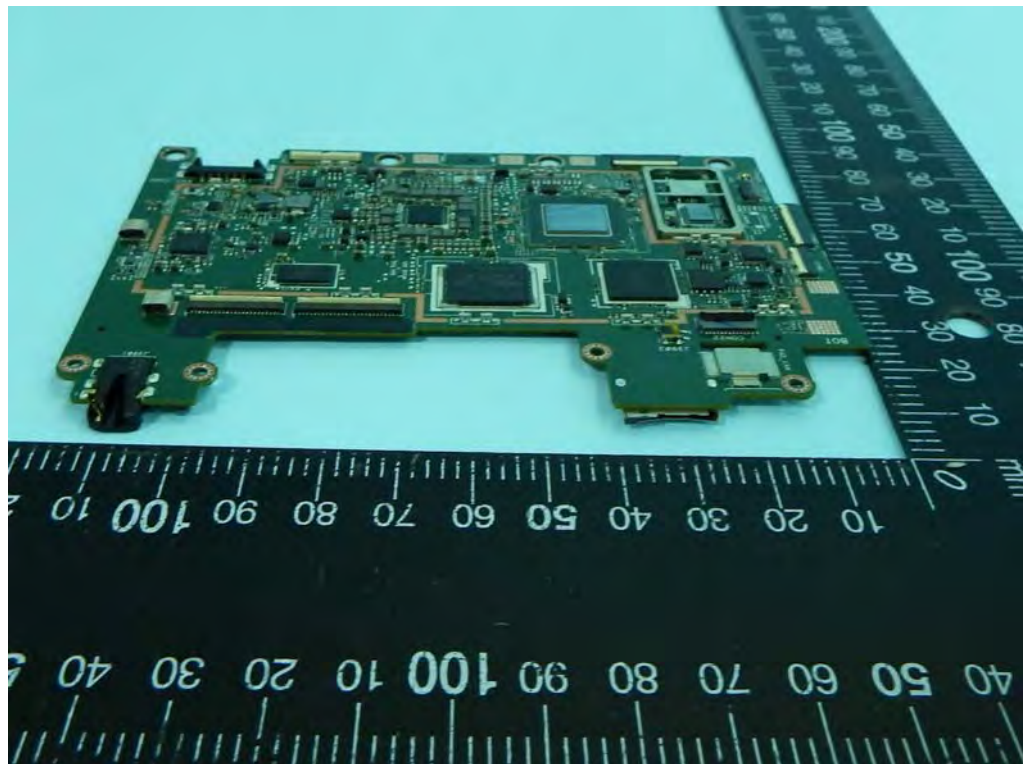
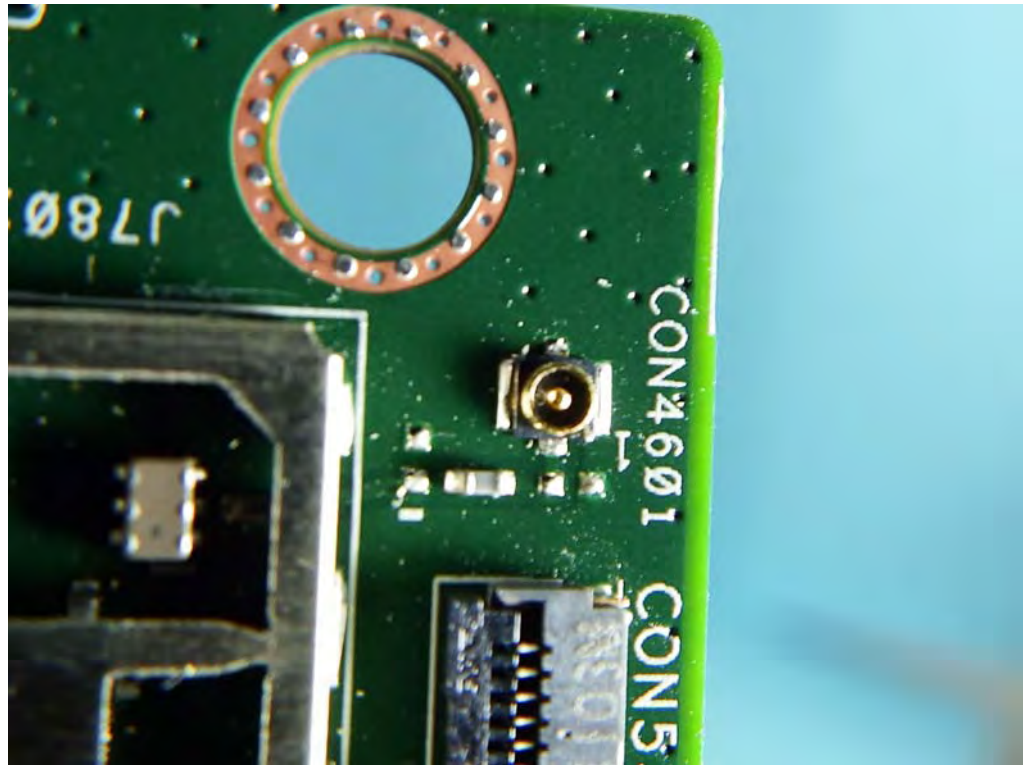
Memory
HYNIX /
H9CCNNBPTALBR-N
TD

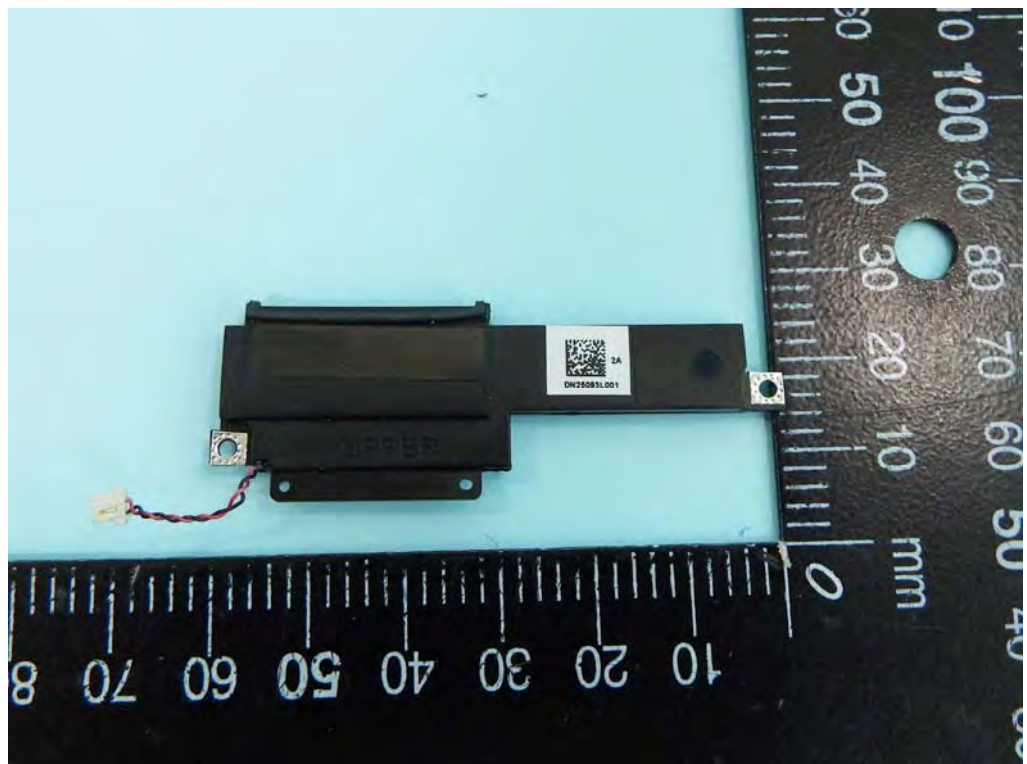
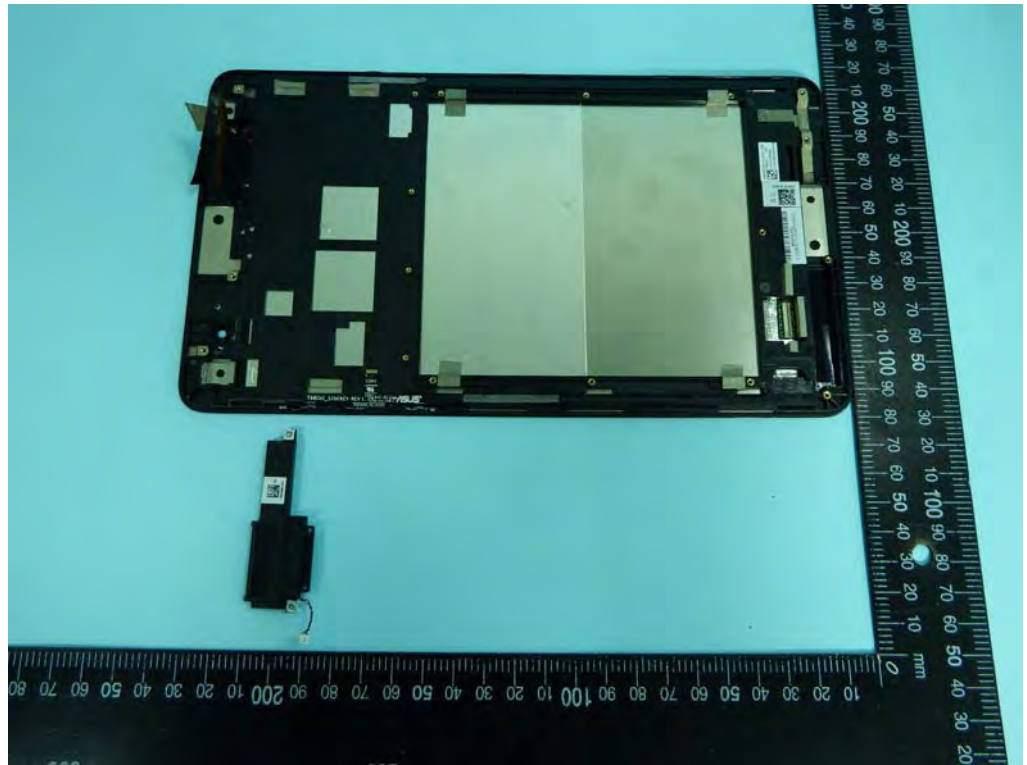


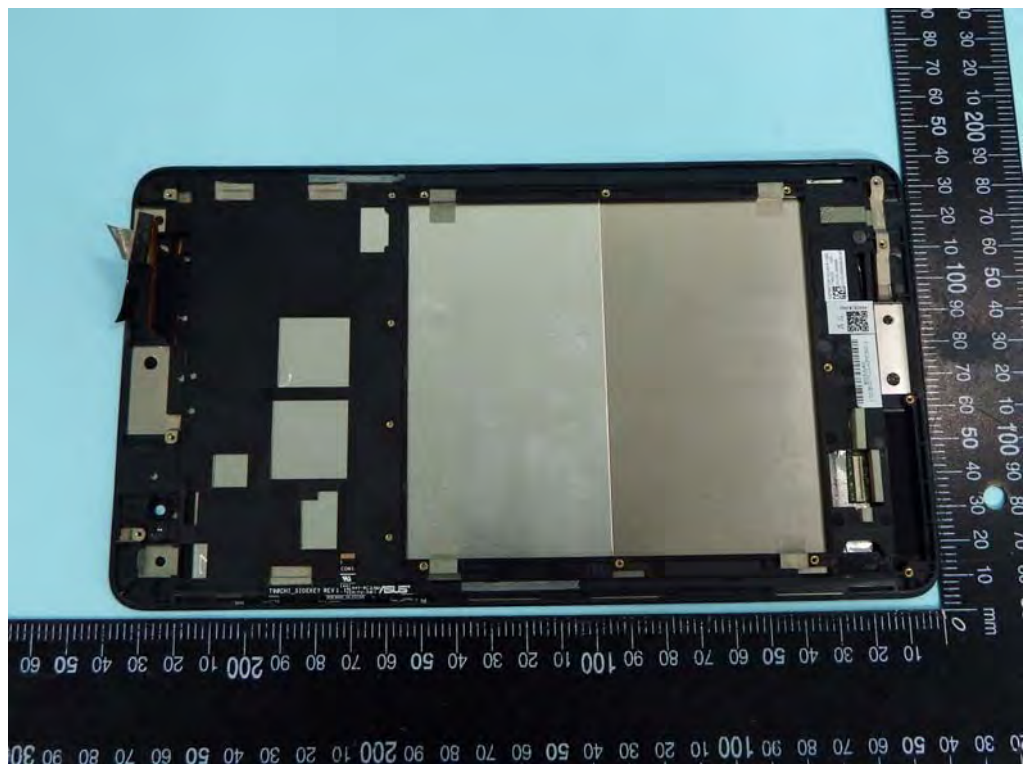
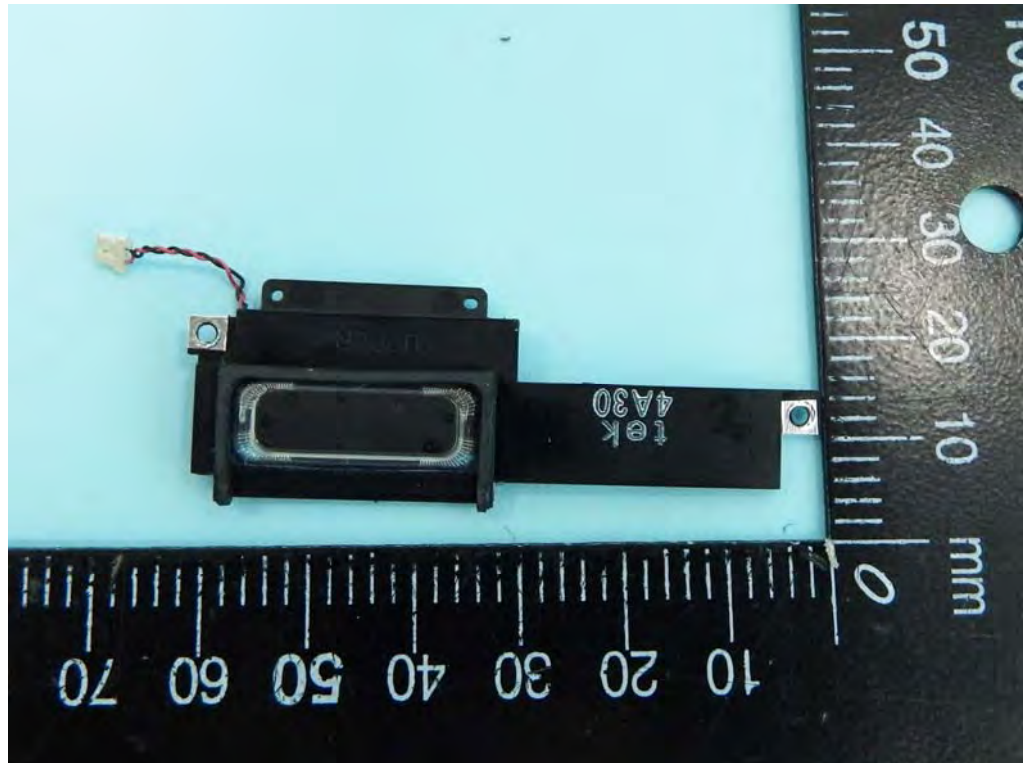


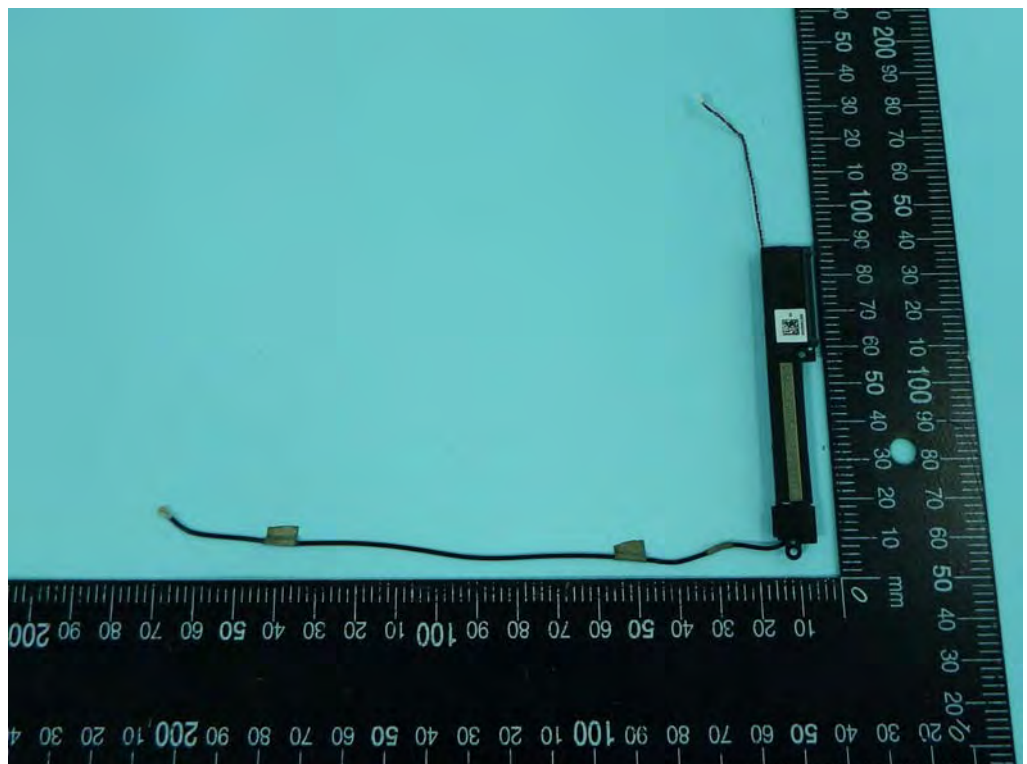
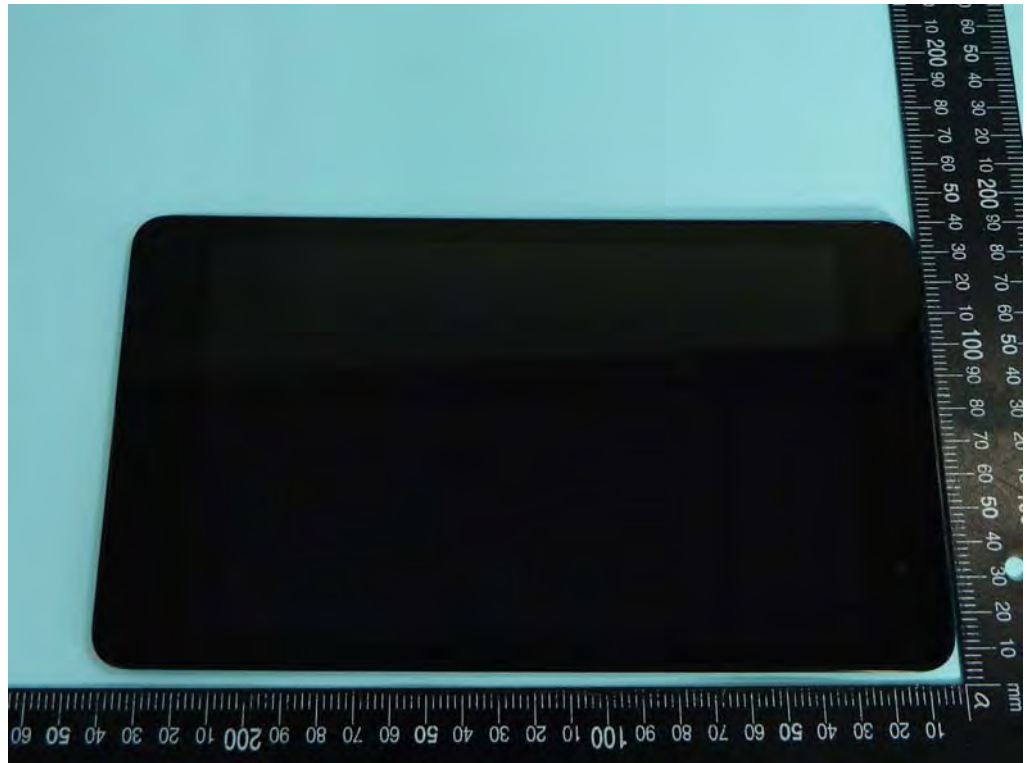
WIFI/BT
BROADCOM/ BCM43340



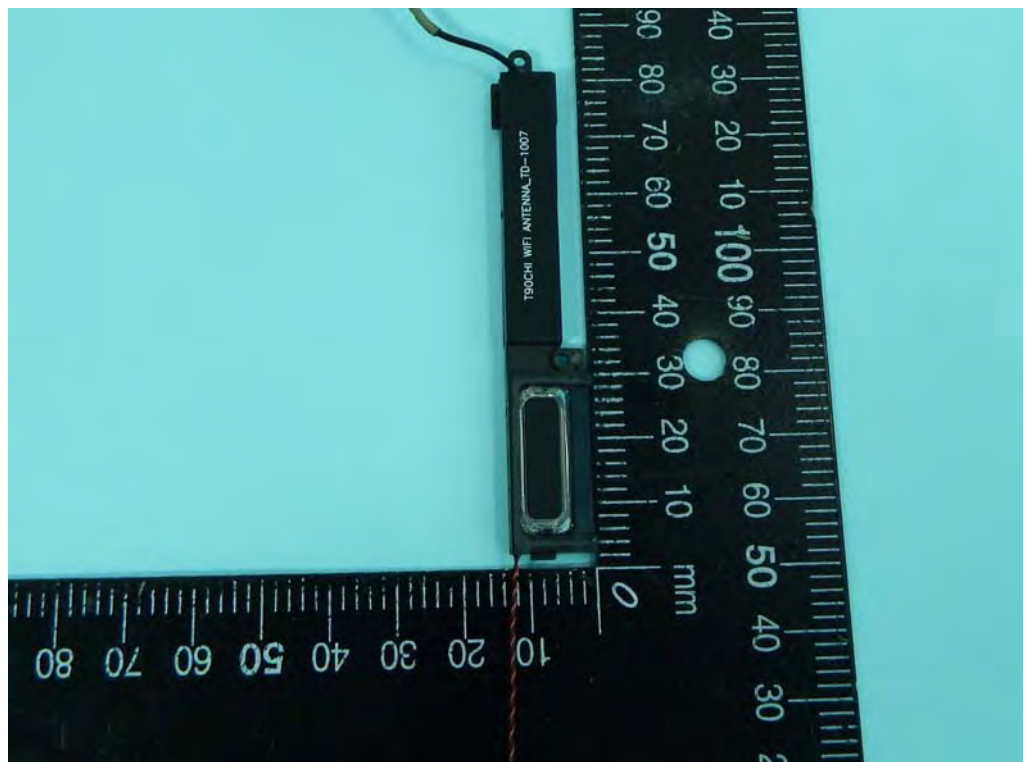
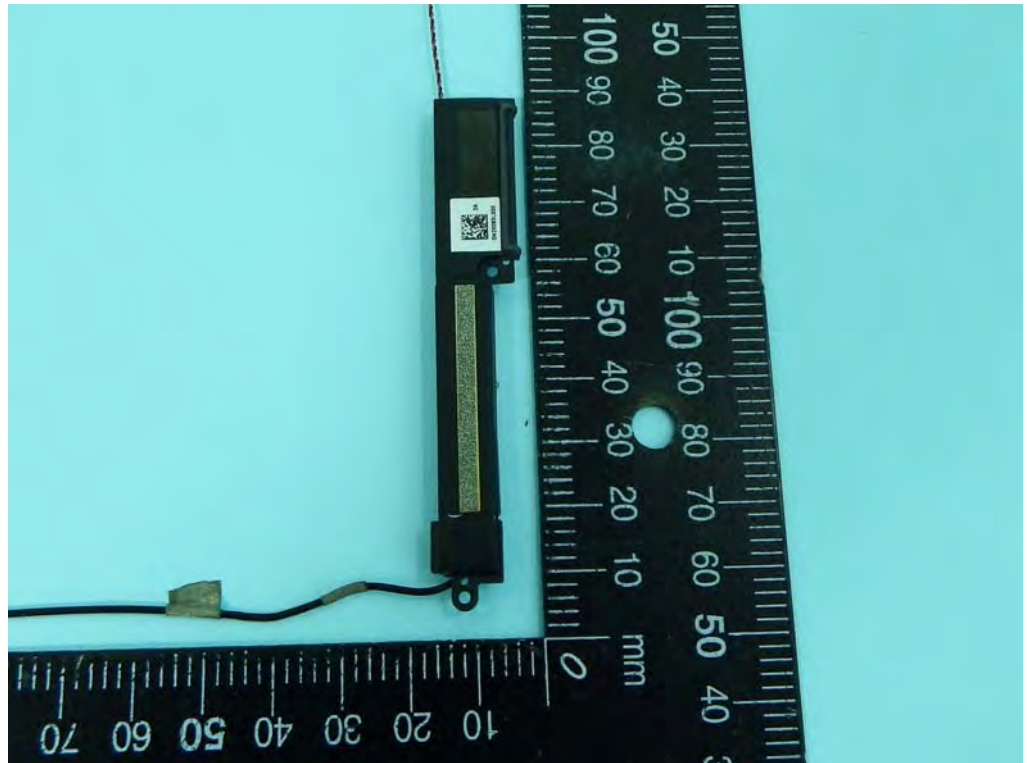








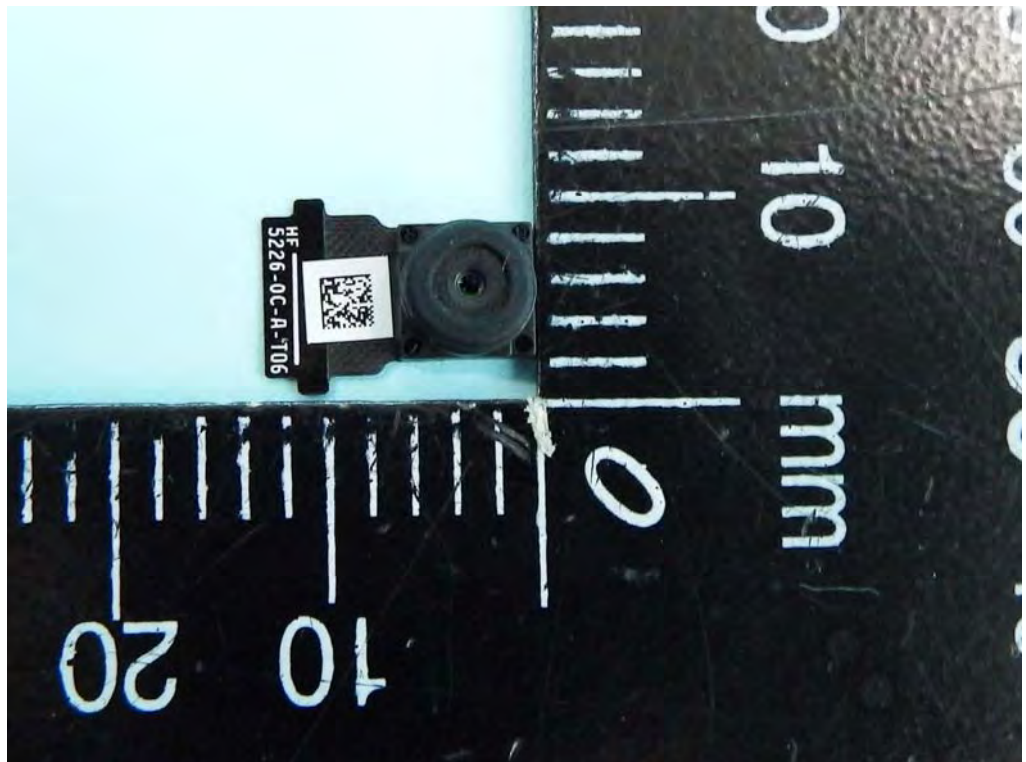
Antenna

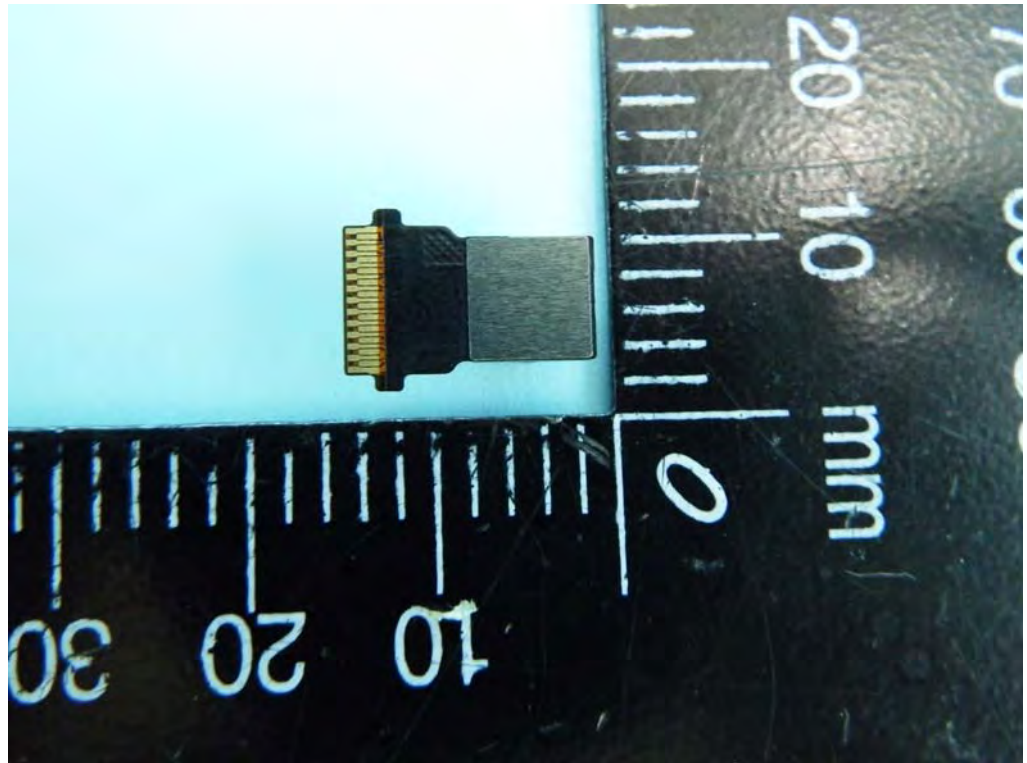




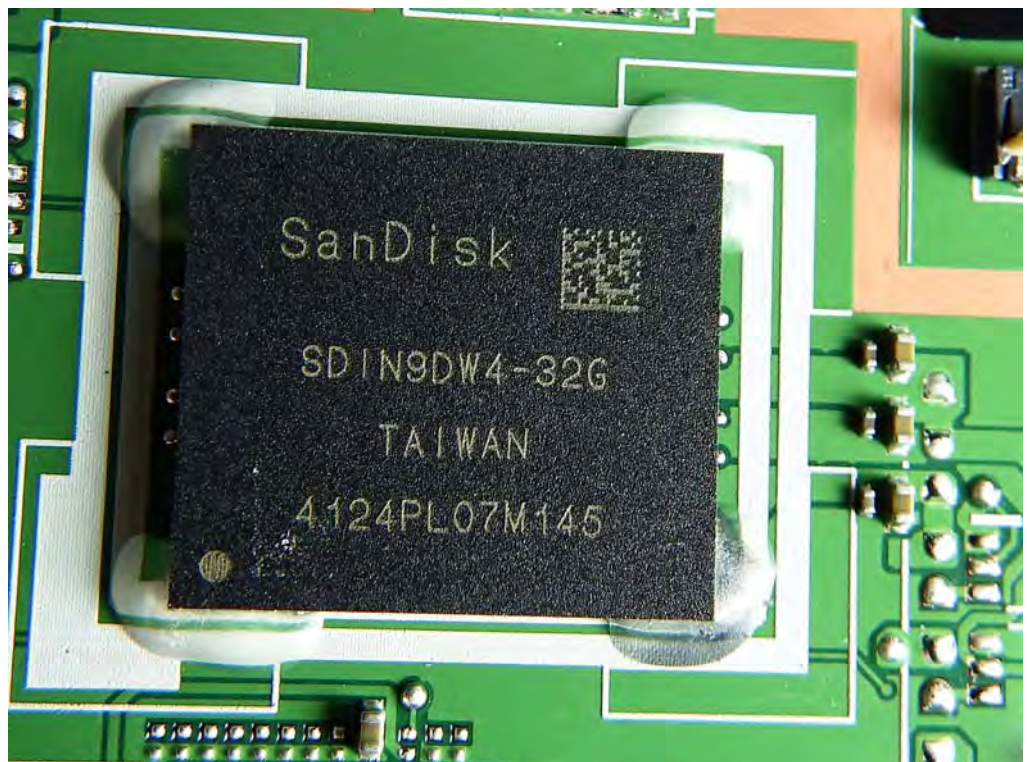
SKU. 1

Front Camera 2M
AZWAVE/AM-2F031

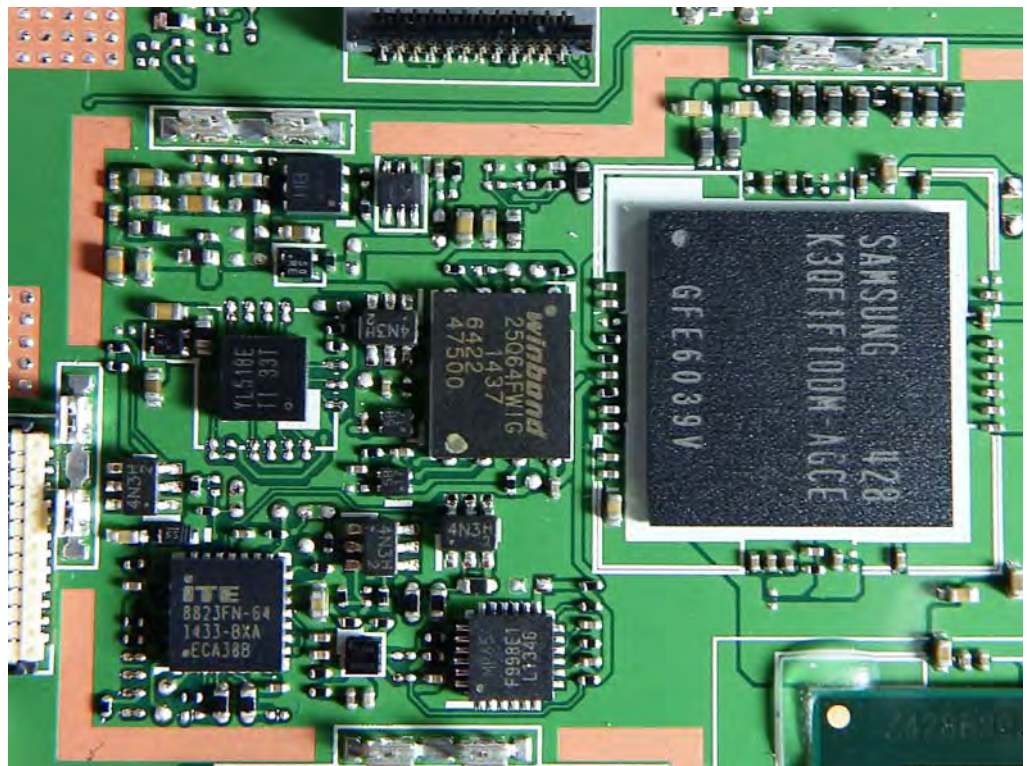




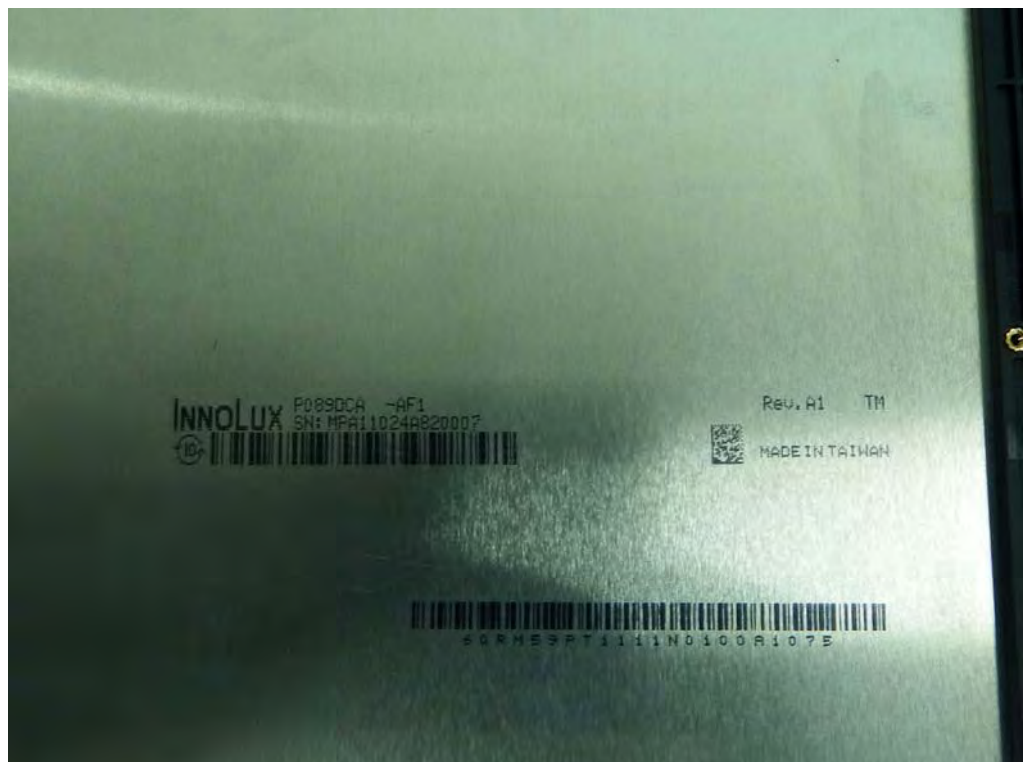
eMMC
SANDISK/ 32G

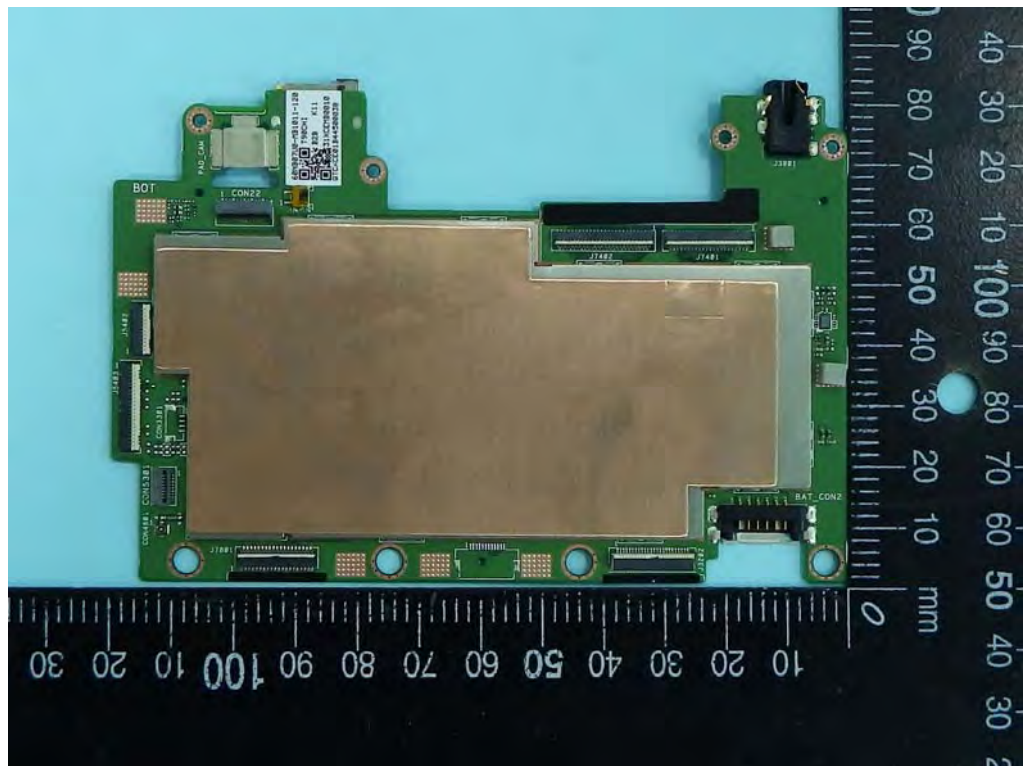


Memory
SAMSUNG / 128G

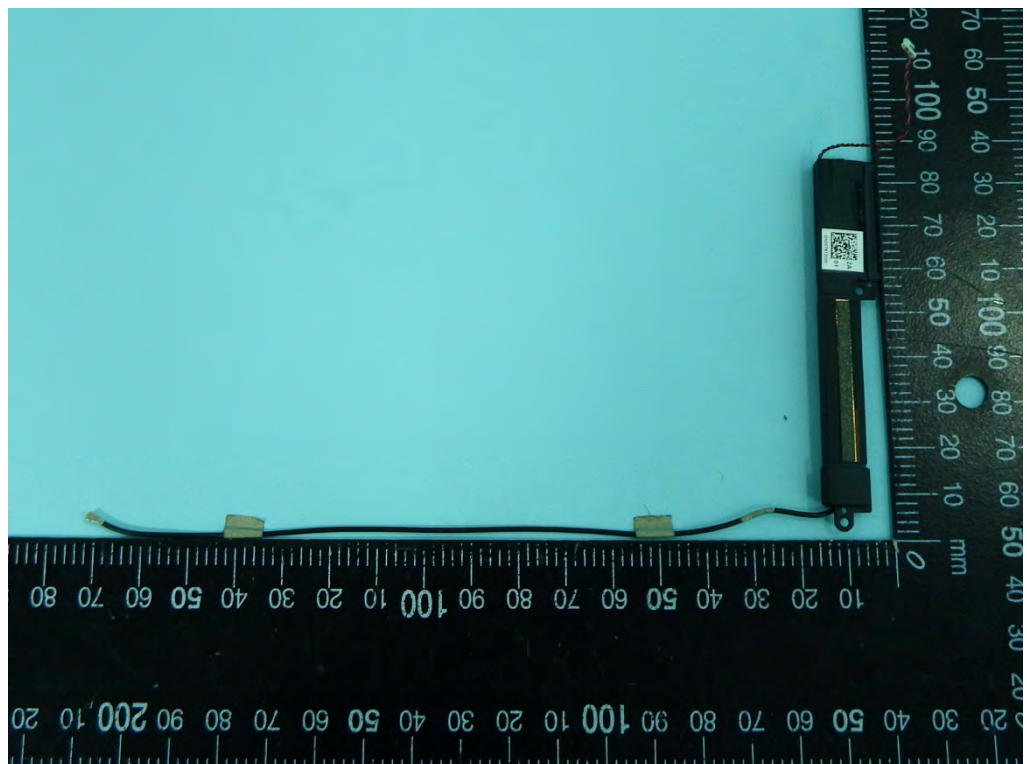


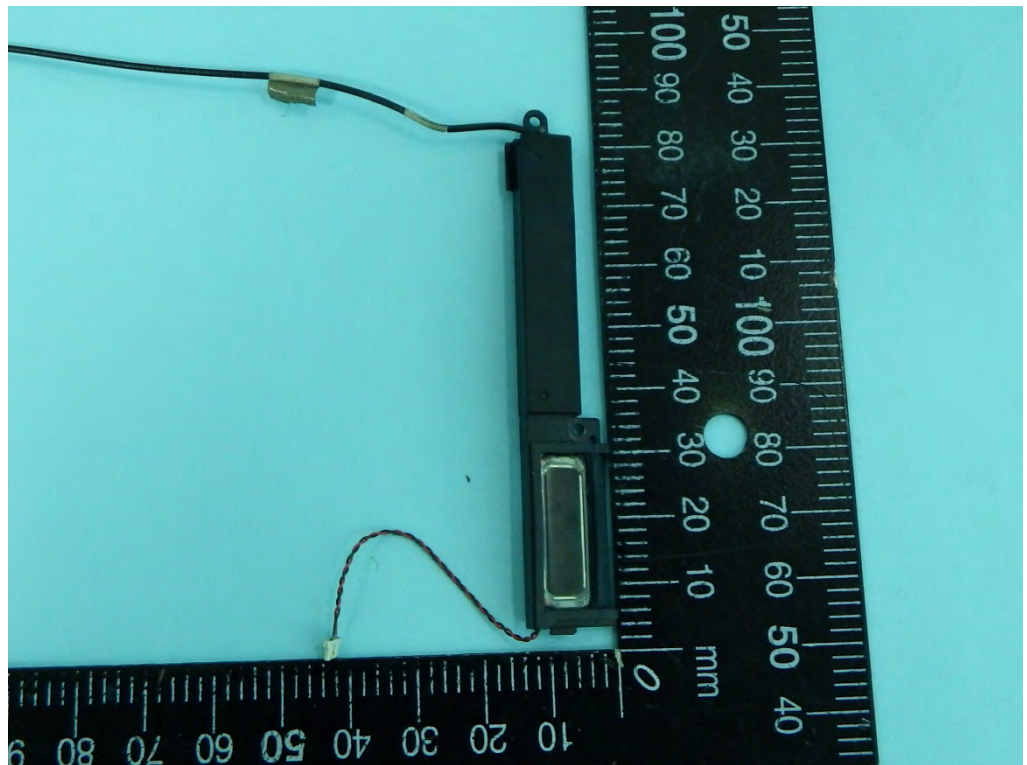
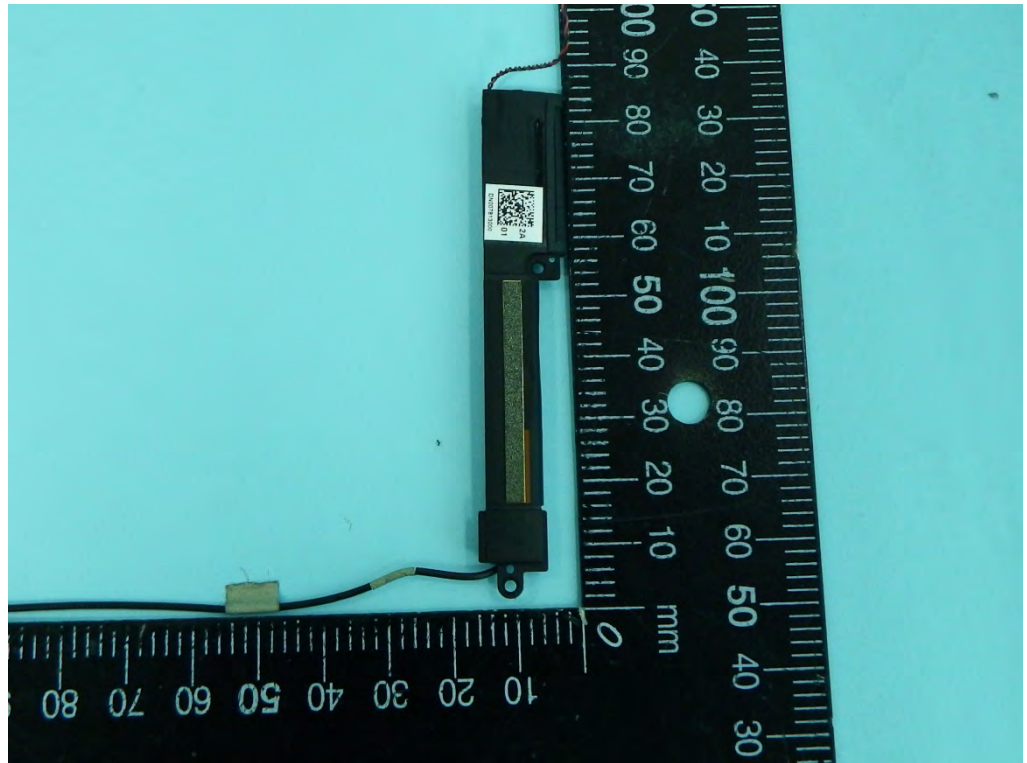
LCD
INNOLUX/P089DCA



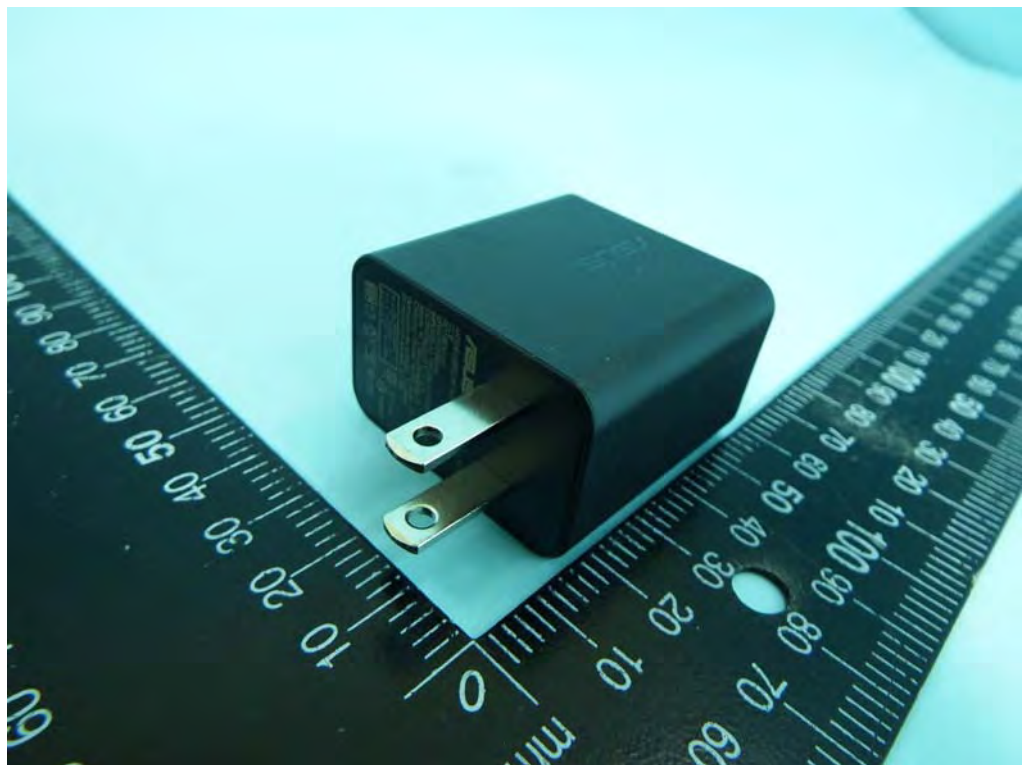
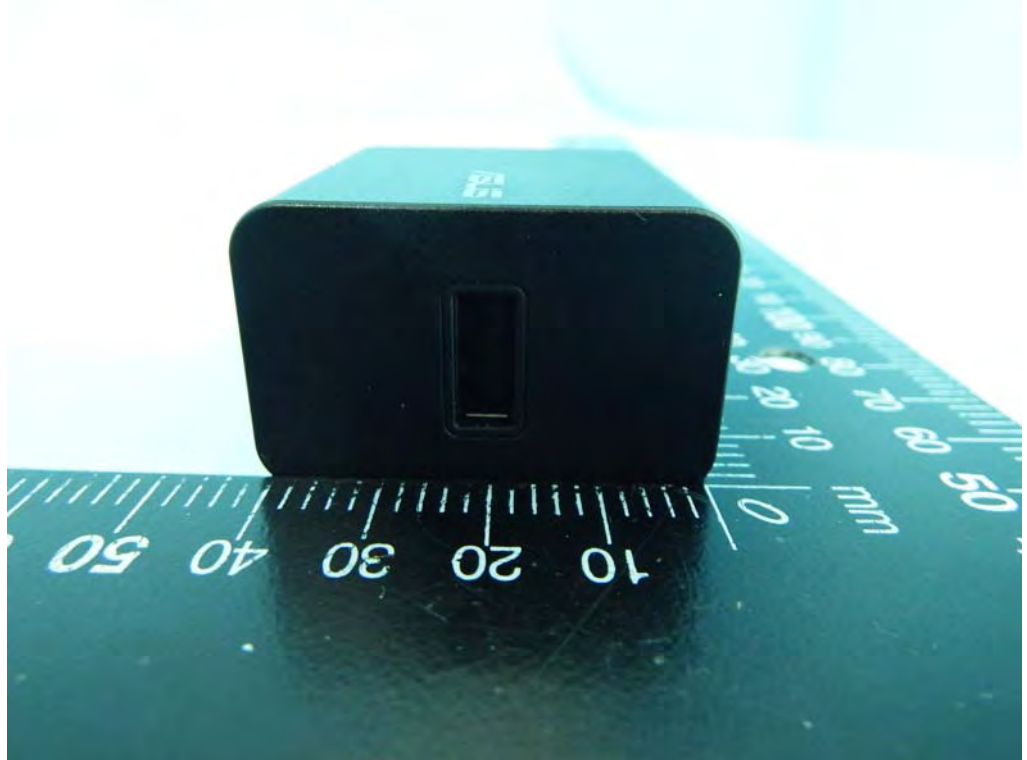


Antenna

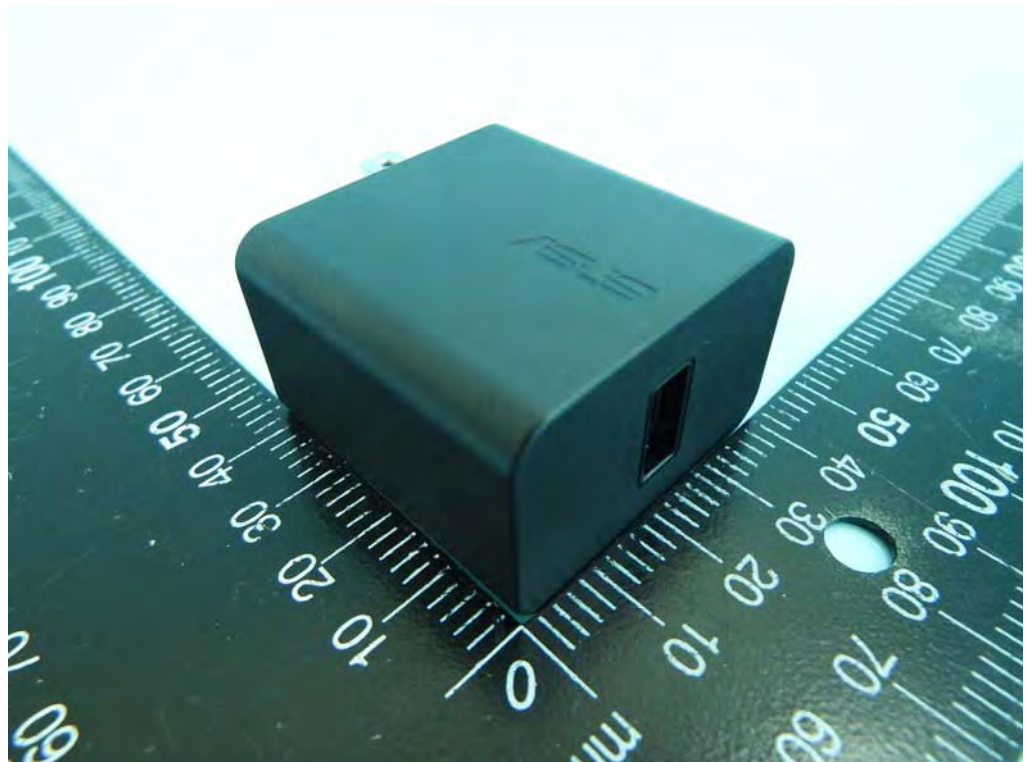


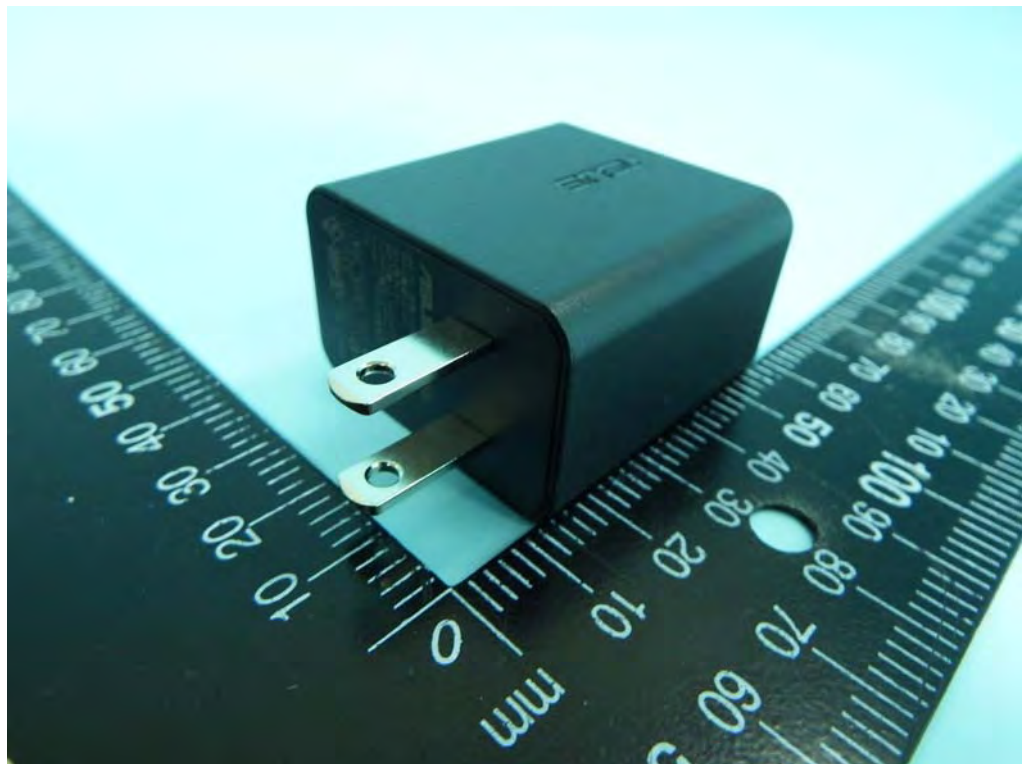






Adapter /
ASUS / CHICONY/
W12-010N3A





Adapter /
ASUS / Vendor: PI/
AD897320



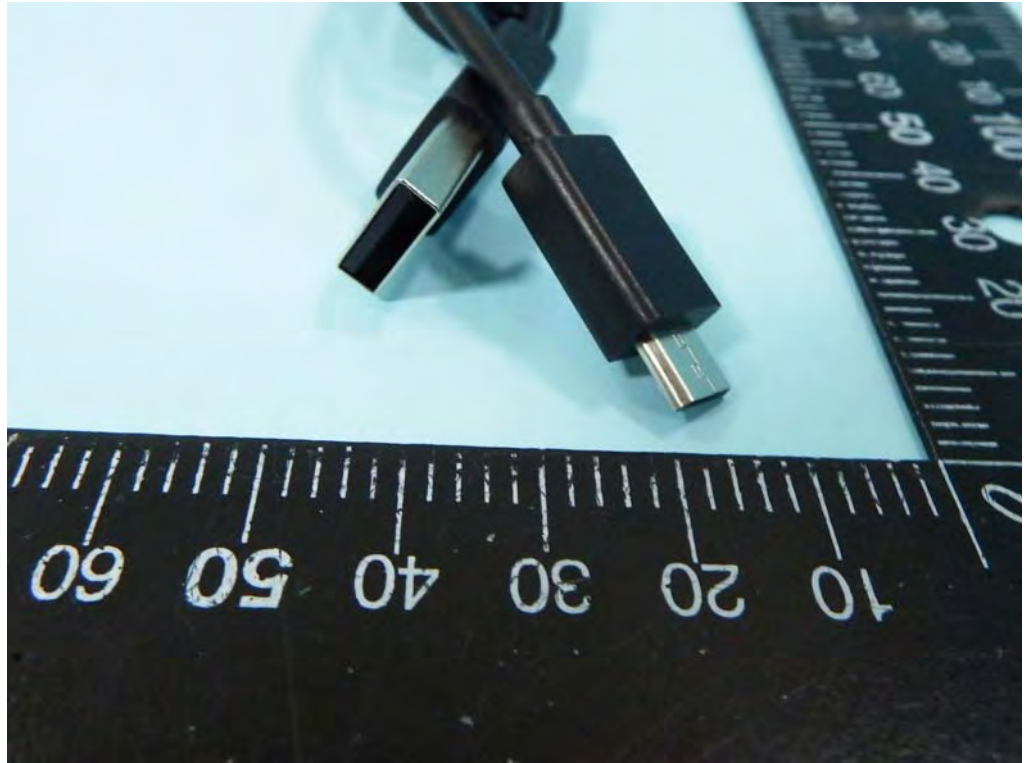
USB Cable 1 /
ASAP /
L65U2009-CS-B





USB Cable 2 /
DAVID /
AA781000





USB Cable 3 /
FOXCONN /
V01A0815



