



Figure 1 - Access cover removed and battery compartment removed.



Figure 2 - Solenoid removed



Figure 3 - Parts disassembled - top of pcb

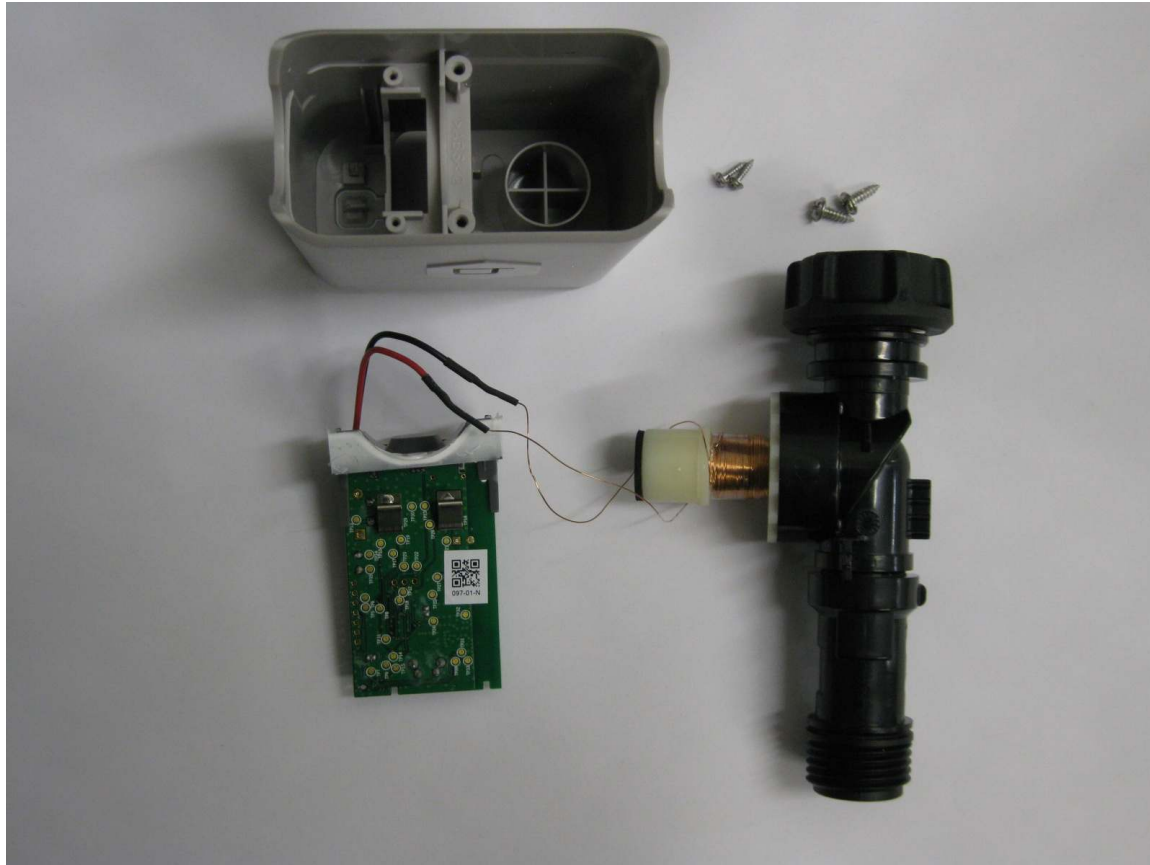


Figure 4 - Parts disassembled - bottom of pcb.



Figure 5 - Bottom of pcb

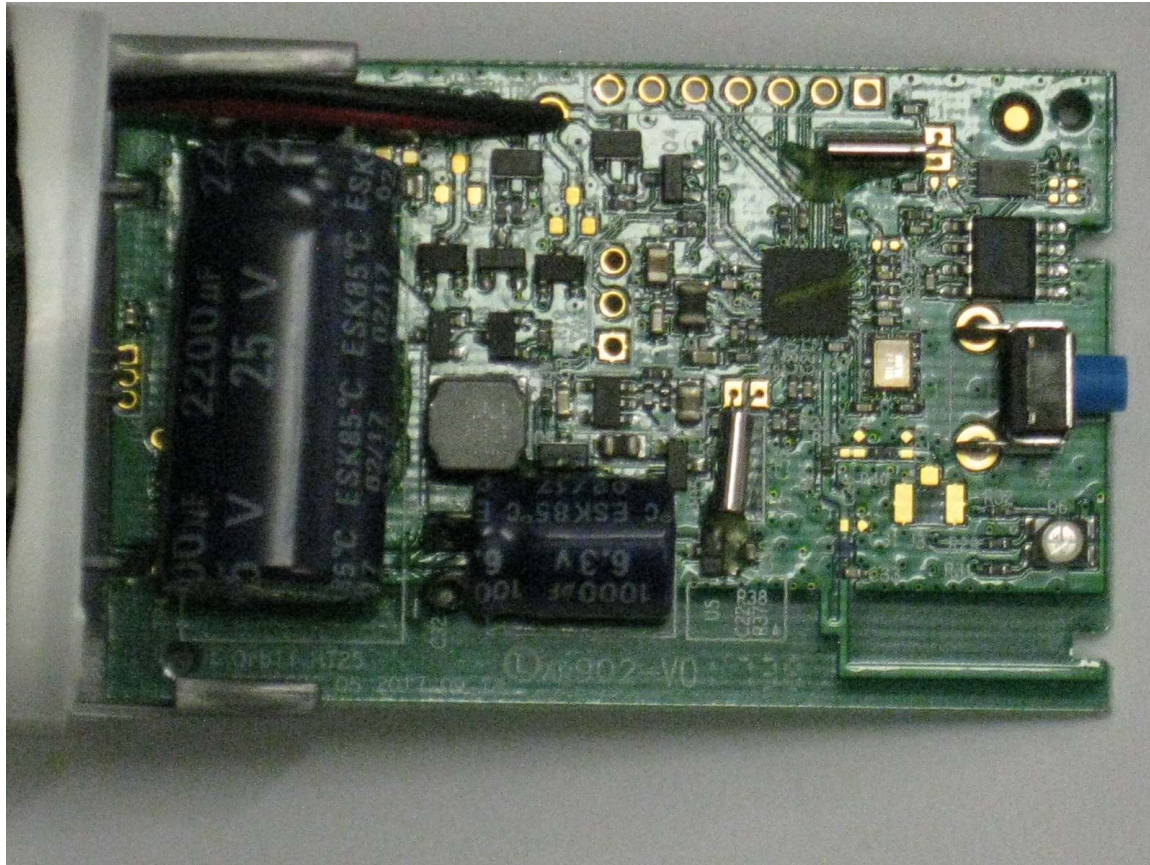


Figure 6 - Top of pcb.

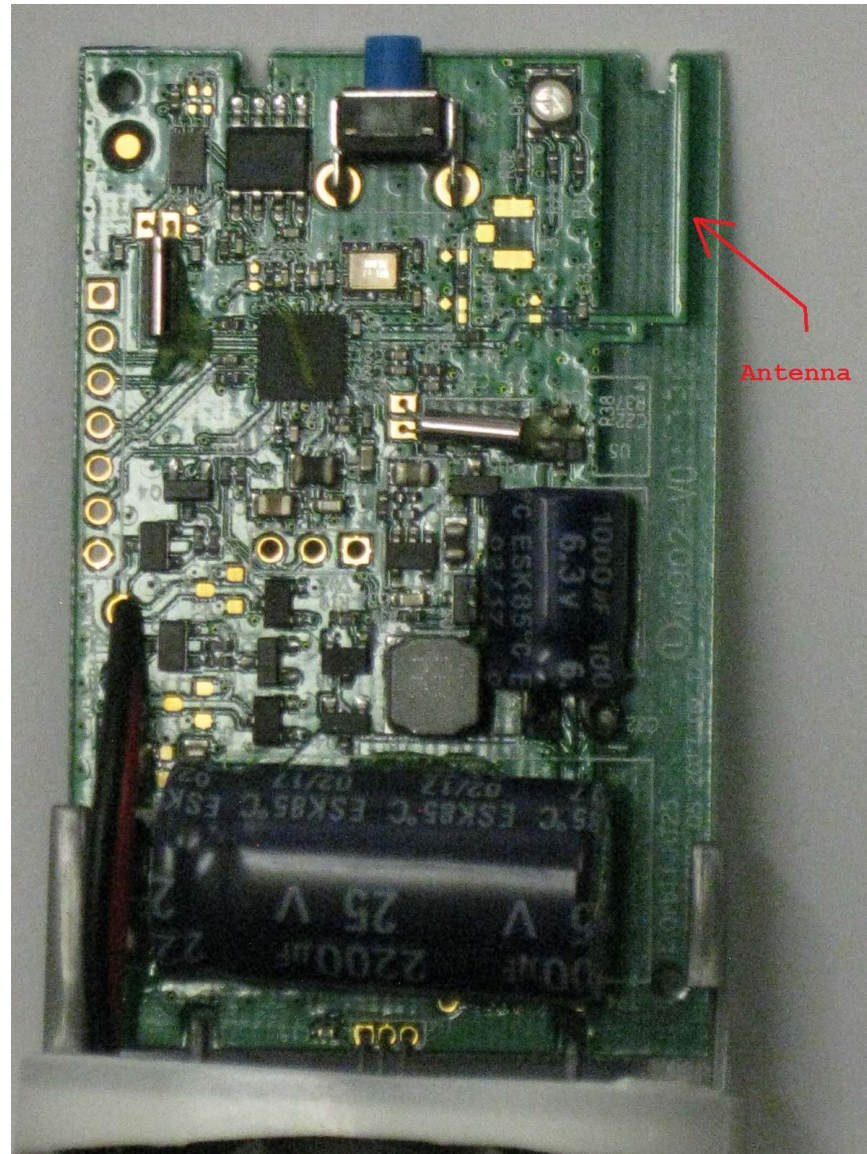


Figure 7 - Top of pcb with antenna location.