

## Appendix C: System Performance Check

Report Date :15-Jun-2012(Worst data)  
By Operator : Dino Chen  
DUT : Dipole  
Frequency : 5600.00 MHz  
Max. Transmit Pwr : 1 W

### APREL ALSAS-10U System Description

#### Phantom Data

Name : Universal Phantom  
Type : ALS-P-UP-1

#### Tissue Data

Type : Body  
Frequency : 5600.00 MHz

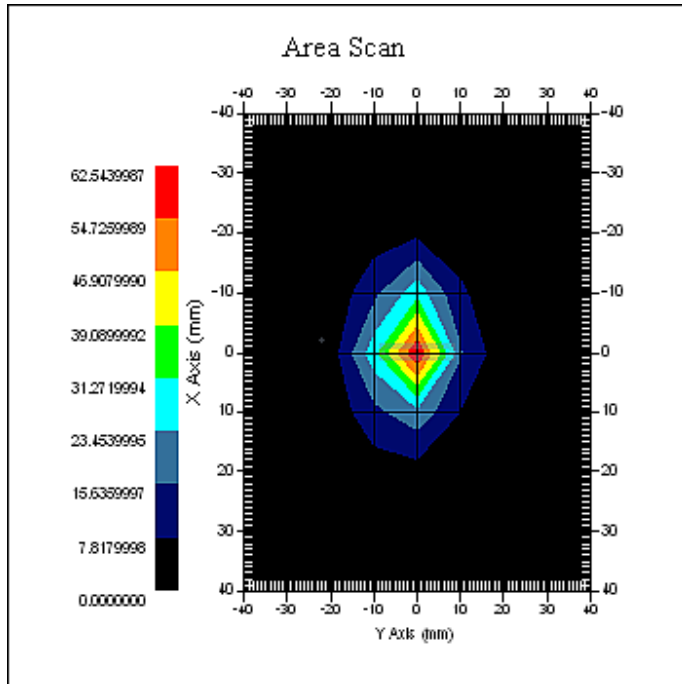
#### Probe Data

Name : E-field Probe  
Model : ALS-E-020  
Serial No. : 266  
Last Calib. Date : 08-Aug-2011

#### Measurement Data

Crest Factor : 1  
Scan Type : Complete  
Tissue Temp. : 22.00 °C  
Ambient Temp. : 21.70 °C  
Area Scan : 9x9x1 : Measurement x=10mm, y=10mm, z=4mm  
Zoom Scan : 5x5x8 : Measurement x=8mm, y=8mm, z=4mm  
Separation : 1cm





1 gram SAR value : 67.211 W/kg  
10 gram SAR value : 21.458 W/kg  
Area Scan Peak SAR : 77.244 W/kg  
Zoom Scan Peak SAR : 186.041 W/kg