

# Socket Connection Kit for Windows Mobile with *Bluetooth*® Wireless Technology



CompactFlash Card for Pocket PC 2000/2002/2003

## Plug Into *Bluetooth*



Now your Pocket PC can use your *Bluetooth* enabled phone as a wireless gateway for email, web browsing, faxing or accessing your office network wherever and whenever you need vital data — all without the hassle of cords or the awkwardness of a protruding antenna. You can wirelessly ActiveSync with a *Bluetooth* enabled desktop or notebook and use a *Bluetooth* enabled LAN Access Point if available on your network. With the included PrintPocketCE software, you can even print to a *Bluetooth* enabled printer.

The kit is great for combining your Pocket PC with Socket's Cordless family of peripheral products, including the Cordless 56K Modem, GPS Receiver, Cordless Hand Scanner, and Cordless Serial Adapter. Learn more about these products online: [www.socketcom.com/product/cordless.asp](http://www.socketcom.com/product/cordless.asp).

## The Card That Fits

The Socket Cordless Card is a Type I CompactFlash card with an integrated antenna. This means that it fits completely in the expansion slot of your favorite Pocket PC. It's the first wireless solution that doesn't alter the physical form factor of your mobile computer.



## Battery Friendly®

Socket's card saves power by using your *Bluetooth* enabled phone to connect to the Internet. A mobile phone cell site could be as far as two miles away, but your mobile computer only needs to supply enough power to support the 30 ft (10 m) range of a Class 2 *Bluetooth* radio.\*

## Easy-to-Use Software

Socket's software for Windows Mobile makes it easy to set up and use the card like a standard modem. Socket's Get Connected! Wizard makes it easy to connect to other *Bluetooth* enabled devices. The kit also includes the *Bluetooth* Devices manager with advanced features for expert users.

## FEATURES

- Class 2 *Bluetooth* radio has range of 30 feet (10 meters)\*
- CompactFlash Type I card has an integrated antenna — fits entirely in Pocket PC's expansion slot
- Works with *Bluetooth* enabled phones from Motorola, Nokia, NTT Docomo, Siemens and Sony Ericsson
- Three-year warranty

## Software for Windows Mobile

- Includes card drivers for Windows Mobile, Get Connected! Wizard, and *Bluetooth* Devices manager with advanced features for expert users
- Works with Pocket PC 2000/2002/2003
- Includes 30-day trial version of PrintPocketCE software to support wireless printing via *Bluetooth*\*\*
- Socket Dialer automates dialing a number in your contacts database via a *Bluetooth* connection
- ActiveSync with a *Bluetooth* enabled desktop or notebook
- Can handle multiple connections including multiple COM ports
- Profiles supported for Windows Mobile:
  - General Access
  - Service Discovery
  - Serial Port
  - Dial-up Networking (DUN)
  - LAN (via PPP)
  - General Object Exchange (OBEX)
  - Object Push
  - File Transfer
  - Fax

\*Range depends upon environment, number of users, and other wireless devices within immediate proximity.

\*\* Full software version available from [www.fieldsoftware.com](http://www.fieldsoftware.com)

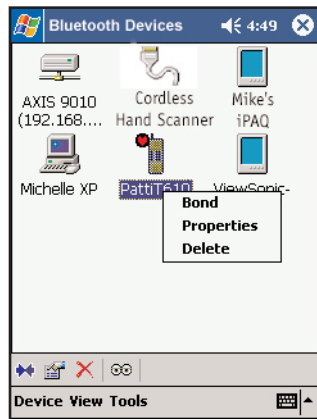
# Socket

## CF Connection Kit for Windows Mobile

with Bluetooth® Wireless Technology



With Socket's Connection Kit, you can wirelessly connect your Pocket PC to a wide variety of Bluetooth enabled devices



It's easy to manage and configure your device connections with Socket's Bluetooth Devices manager.

**Product #**      **BL4508-309**



### Corporate Headquarters:

Socket Communications, Inc.  
37400 Central Court, Newark, CA 94560  
Phone: 510-744-2700  
Fax: 510-744-2727  
www.socketcom.com

## SPECIFICATIONS

### Physical Characteristics:

**CF Card Dimensions:** 36 x 43 x 3.3 mm

**Mass:** 10 g

### Power Consumption:

#### 3.3 V Supply:

**Idle:** 16 mA (52.8 mW)

**Typical:** 40 mA (132 mW)

**Maximum:** 90 mA (297 mW)

#### 5 V Supply:

**Idle:** 20 mA (79.8 mW)

**Typical:** 44 mA (159 mW)

**Maximum:** 94 mA (324 mW)

**Supply Voltage, VCC:** +5.0/3.3 V ±5%

**Operating Temperature:** -10 to +60 °C

**Storage Temperature:** -30 to +85 °C

**Interface:** CompactFlash I/O

### Bluetooth Characteristics:

**Protocol:** Bluetooth 2.45 GHz ISM  
band frequency hopping

**Antenna:** Integrated

**Radio range:** Up to 30 ft (10 m)\*

**Connection:** Point-to-point and  
point-to-multipoint

**Security:** Encrypted link

**RF Power Output:** 0.001 Watt

### Operating System Support:

Windows Mobile 2003, Windows CE 3.0

### Certification/Compliance:

**FCC:** Part 15, Class B

**C-TICK:** s.182

Bluetooth 1.1

CompactFlash Spec. 2.0

ETS 300 328    ETS 300 826

TELECOM

### Software Included:

#### Easy-to-Use Setup Wizard:

Get Connected! Wizard

#### Bluetooth Device Wizard:

Advanced Mode for expert users

#### Third Party Software (trial version):

PrintPocketCE

### Supported Bluetooth Devices:

For updates, please visit:

[www.socketcom.com/product/bluetooth.asp](http://www.socketcom.com/product/bluetooth.asp)

### Phones:

Ericsson/Sony Ericsson: R520, T39,  
T68, T68i, T610, T616

Motorola: Timeport 270C

Nokia: 6210 with connectivity battery,  
3650, 3660, 6310, 6310i, 7650, 8910,  
8910i

NTT Docomo: PALDIO 633S

Siemens: S55, S56

Sony: C413S

**Warranty:** Three years

### For Additional Product Information:

**Website:** [www.socketcom.com](http://www.socketcom.com)

**Email:** [info@socketcom.com](mailto:info@socketcom.com)

**FTP:** [ftp.socketcom.com](ftp://ftp.socketcom.com)

### Sales Offices:

#### Corporate Headquarters:

**Phone:** 510-744-2700

**Domestic Toll Free:** 800-552-3300

**Fax:** 510-744-2727

**Email:** [www.socketcom.com/contact](http://www.socketcom.com/contact)

\*Range depends upon environment, number of users, and other wireless devices within immediate proximity



© 2004, Socket Communications, Inc. Socket Communications, Socket, Connection Kit with Bluetooth Wireless Technology, Cordless Card, and Battery Friendly are registered trademarks or trademarks of Socket Communications, Inc. The Bluetooth word mark and logo are owned by the Bluetooth SIG, Inc. and any use of such marks by Socket Communications, Inc. Microsoft and Windows are either registered trademarks or trademarks of Microsoft Corporation in the United States and/or other countries. All other brand and product names are trademarks of their respective holders.

6450-00059 Q September 2004