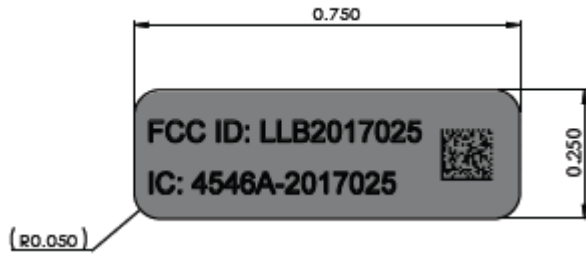


## ID Label/Location

Drawing of Label:



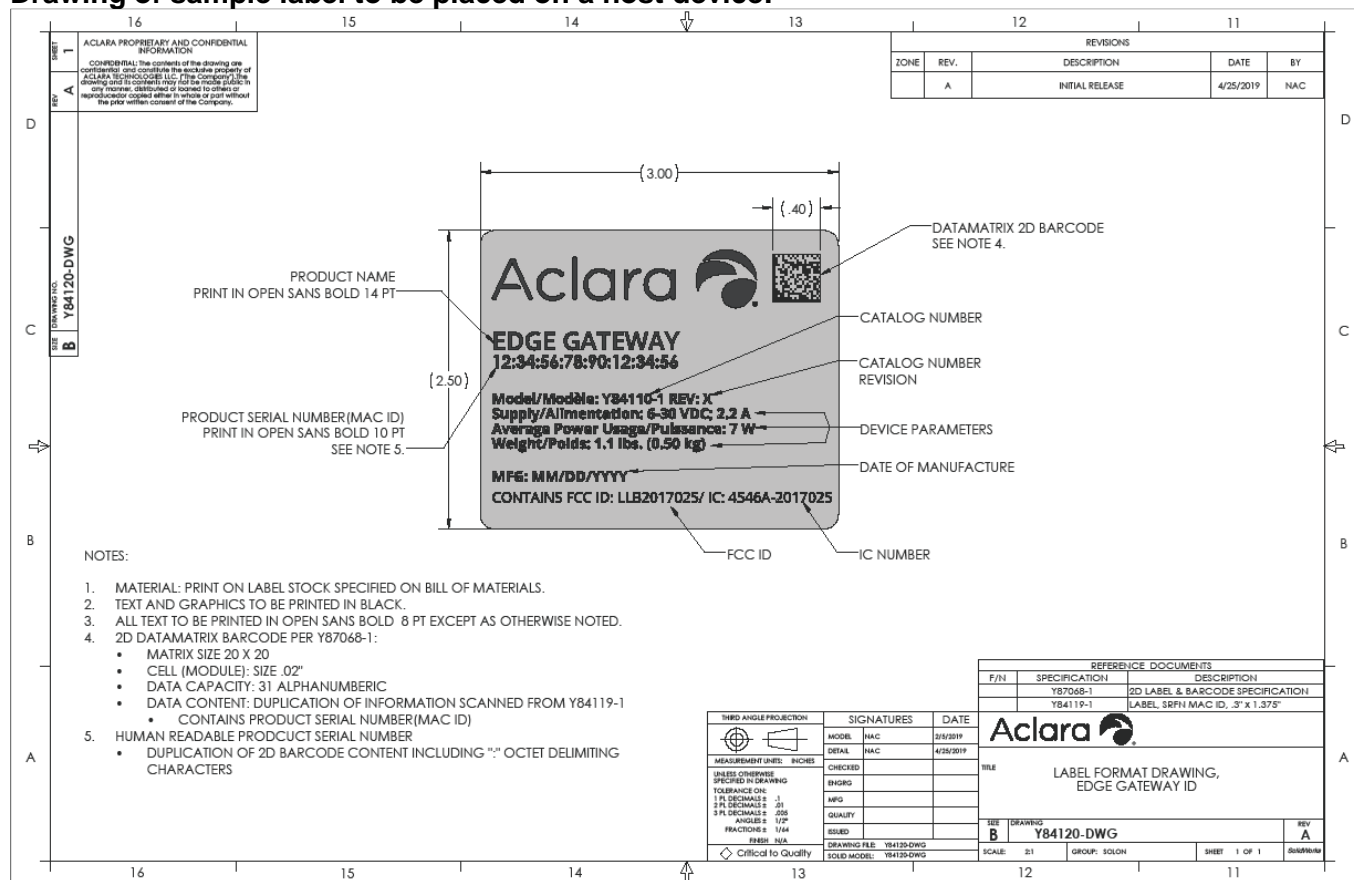
### Description of label

The label is in black ink printed on a 2 mil, gloss white polyester material. The label is applied using an acrylic permanent adhesive. The label is UL/CSA approved for indoor/outdoor use. The label is 0.75 x 0.25 inches.



Photograph showing placement of ID Label

## Drawing of sample label to be placed on a host device:



While the model information will change with the different host devices, all labels will have the module ID numbers as shown on the bottom line of the label.