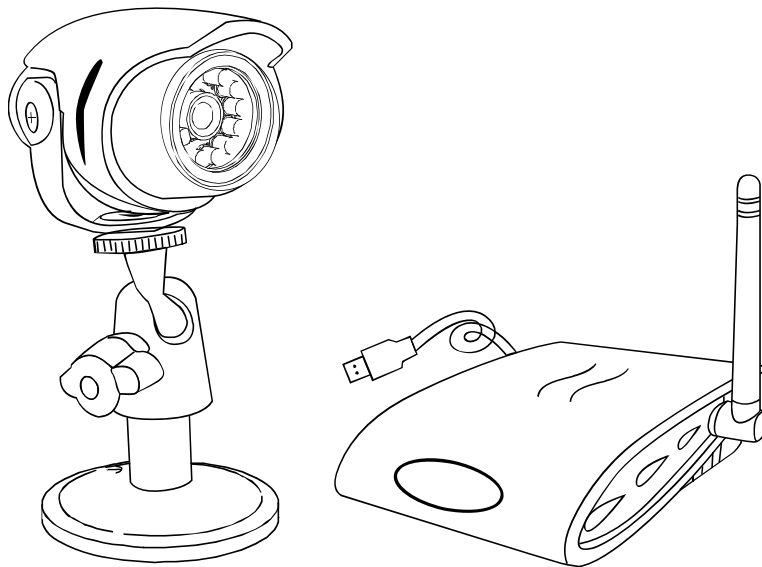


User's Manual

Model No.: 0534

2.4 GHz Wireless Weatherproof Monitoring System with Dual Mode (USB & A/V) Receiver

- Wireless Color Weatherproof Camera(CCD-602S)
- Wireless Stylish Dual Mode (USB & A/V)(CCD-680DR)



PLEASE READ CAREFULLY AND SAVE

This manual contains important information about this product's operation.
If you are installing this product for others, you must leave this manual -or a
copy- with the end user.



Important!

Please read this user manual carefully
before installing or using these units.

WARNING- These units should ONLY be disassembled
by an authorized technician if service is required.

Safety Precautions

For correct and safe operation of this system, it is
essential that installers, end-users and service
technicians should follow all safety procedures outlined
in this manual. Specific Warning and Caution statements
(and/or symbols) are marked on the units where needed.

Warning and Caution Statements

"WARNING" indicates a situation where failure to
follow proper procedures can cause personal injury.

"CAUTION" indicates a situation where failure to
follow proper procedures can cause damage to the
equipment.

This camera is subject to interference from cordless phones, microwaves,
and other wireless devices operating in the 2.4GHz range.

Keep the system AT LEAST 10 ft away from the devices during installation
and operation.

Contents

| | |
|------------------------------------|----|
| Safety and Hazard Notices --- | 1 |
| FCC/CE WARNING----- | 3 |
| Parts Included in This System----- | 3 |
| Installing the Camera----- | 4 |
| Installing the Receiver----- | 5 |
| System Requirements----- | 5 |
| System Installation----- | 6 |
| Software installation----- | 7 |
| Device Setting / Video Device----- | 10 |
| About Alarm / Alarm Actions----- | 11 |
| Record location / Email----- | 12 |
| Telephone / alarm Schedule----- | 13 |
| Motion Detection----- | 14 |
| Record Schedule----- | 15 |
| Remote Options----- | 16 |
| System Options----- | 17 |
| Technical Data----- | 20 |
| Troubleshooting----- | 21 |
| Disposal----- | 21 |

Safety and Hazard Notices



Damages caused by non-compliance with this operating manual lead to the expiration of the warranty! We will not assume any liability for subsequent damages! We will not assume any liability for damages to items or persons caused by improper handling or non-compliance with the safety notices! Any warranty claim will be null and void in such cases.

- This product has left the factory in perfectly safety condition. In order to maintain this status and ensure safety operation, the user has to observe the safety notices and warnings ("Attention!" and "Notice!") contained in this operating manual.

The following symbols need to be observed:



= An exclamation mark in a triangle indicates important notices in these operating instructions that must be observed under all circumstances.



= A lightning symbol warns of electric shock or the impairment of the appliance's electric safety.

- Make sure that all electric connections and connection cables between the devices of the camera system as well as the devices to be connected meet the pertaining regulations and are in conformity with the operating instructions.
- In commercial institutions, make sure you observe the accidental prevention regulations of the commercial trade organization for electric installations.
- In schools, training facilities, hobby and self-help workshops, qualified personnel needs to supervise the operation of electronic devices.
- Also observe the safety notices and operating instructions of the other appliances connected to the system.
- Please contact an expert in case you have any doubts about the mode of operation, the safety or connecting the appliances.
- Do not operate the devices unsupervised.
- When opening the covers or removing parts except where possible by hand, you may expose live parts. Connections may also be live. Prior to aligning, cleaning, service or repair work or exchanging parts or modules, you must separate the appliances from all power sources if you need to open them.
Only an expert familiar with the risks and the pertinent regulations may repair or maintain an open live appliance.
- Never plug-in or unplug the power jack with wet hands.

- Never tug on the power cords of the power jack, use the plug to unplug it from the socket.
- Make sure that the power cables do not get squashed or damaged by sharp edges when installing the devices.
- Never replace damaged power cables yourself! In such a case, remove them from the net and take the devices to a workshop.

FCC/CE NOTICE

This equipment generates and uses radio frequency energy and if not installed and used properly, that is, in strict accordance with the manufacture's instructions, may cause interference to radio and television reception. It has been tested and found to comply with limits for a Class B digital device in accordance with Part 15 of FCC Rules and CE I-ETS 300 440, which are designed to provide reasonable protection against such interference in a residential installation. However, there is no guarantee that interference will not occur in a particular installation. If this equipment does cause interference to radio or television reception, which can be determined by turning the equipment off and on, the user is encouraged to try to correct the interference by one or more of the following measures:

1. Reorient the TV/radio antenna.
2. Relocate the Receiver away from the TV/radio receiver.
3. Plug the Receiver into a different wall outlet so that the Receiver is on a different branch circuit.
4. If necessary, the user should consult the dealer or an experienced radio/television technician

The user may find the following booklet prepared by the Federal Communication Commission helpful: "How to Identify and Resolve TV Interference Problems." This booklet is available from the US Government Printing Office, Washington, D.C. 20402, Stock No. 004-000-00345-4.

FCC/CE NOTICE

The user is cautioned that changes or modifications not expressly approved by the manufacturer could void the user's authority to operate the equipment. Linear radio controls provide a reliable communications link and fill an important need in portable wireless signaling. However, there are some limitations which must be observed. The radios are required to comply with FCC Rules and Regulations as Part 15 devices and CE I-ETS 300 440. As such, they have limited transmitter power and therefore limited range. A receiver cannot respond to more than one transmitted signal at a time and may be blocked by radio signals that occur on or near their operating frequencies. Changes or modifications to the device may void FCC and CE compliance. Infrequently used radio links should be tested regularly to protect against undetected interference or fault.

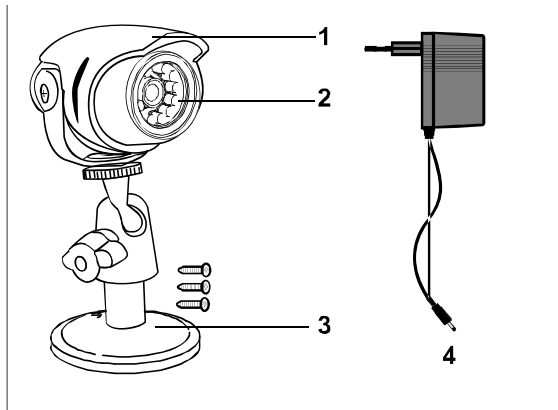
Parts Included in This System

1. **2.4 GHz Wireless color camera**
2. **2.4 GHz Wireless dual mode receiver**
3. **Camera Stand**
4. **7.5V AC/DC Adaptor for the camera**
5. **7.5V AC/DC Adaptor for the dual mode receiver**
6. **A/V Cable**

Installing the Camera



ATTENTION! Prior to drilling and inserting the screws, make sure that there are no electric cables pipes, etc. in the wall that may become damaged.




- 1. Rain protection cover**
- 2. In the dark, the integrated infrared lighting is switched on automatically**
- 3. Mounting bracket**
- 4. DC Power**

Installing and Connecting the Devices

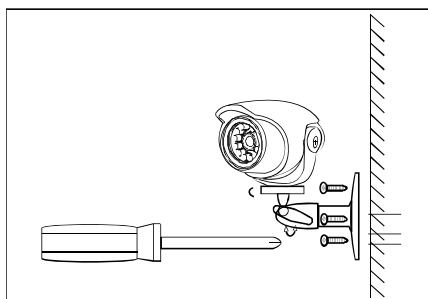
Select a suitable installation site from which you want to monitor the desired object. A suitable installation site has the following features:

- Dry
- good air circulation
- as dust-free as possible
- as dust-free as possible
- with a power outlet in close vicinity
- little vibrations

 Select an installation site that is not screened off by reinforced concrete walls, mirrors, metal shelves, etc.

There should not be any appliances with strong electric fields close to the sender or the receiver. Any strong electric environment could cause the interference and reduce the performance.

Fastening the wall bracket



- **Look for a suitable place for mounting (possibly with a socket)**
- **Screw the wall bracket with the supplied screws to a suitable wall or a suitable platform use dowels if relevant.**
- **Align the camera and screw the T - bolt tight.**

Connecting the camera

Connect the DC plug of the power unit to the voltage supply jack of the camera. Pay attention to the correct input voltage of 7.5V DC!

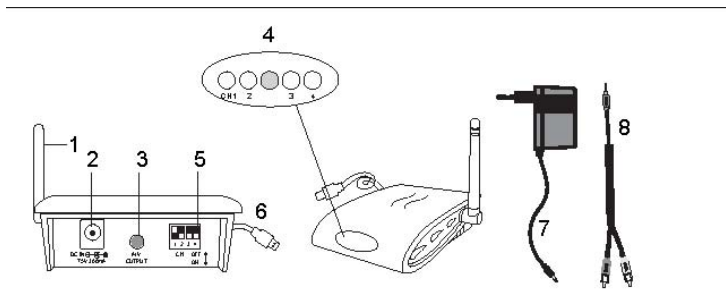
- Insert the plug-in power unit into a suitable mains socket.
- The camera is now ready for use.

Installing the Receiver

Set up the receiver approx. 1 m above ground (better receiving conditions). There must be a power outlet proximity to the receiving site.

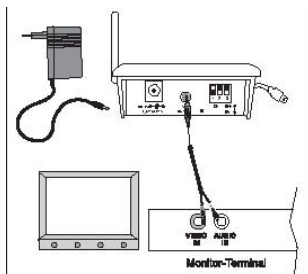


ATTENTION! Only place the receiver on rugged and stable surfaces.



1. Receiver antenna
2. Power plug
3. A/V Output
4. LED (RED for Channel1,2,3,4, BLUE for USB connection)
5. Channel selection switch
6. USB connector
7. Power supply
8. A/V cable

Connecting the receiver to monitor



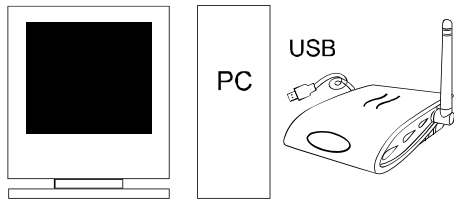
- Connect the A/V cable as depicted to a suitable monitor or TV system with an A/V cinch input and the receiver (white plug = audio (tone in mono), yellow plug = video).
- Connect the power supply

- Select the correct channel which same as camera.
- The receiver is now ready for use.
- While having the USB jack plug into USB port (USB 2.0 recommended) the blue LED (USB connection LED) will light up. The RED LED is the channel LED.

Conneting the receiver to PC

1. Plug the USB into the USB socket of PC
2. Insert the CD-ROM provided with the package and Install CamGuard software and Driver

To PC



System Requirements

- Pentium IV or above
- 256MB RAM or above
- USB 2.0 port
- CD-ROM drive (for installing driver & software)
- Color Monitor or LCD Display
- Windows X P or above

System Installation

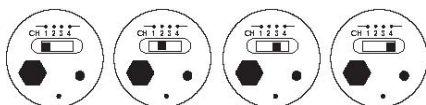
When installing the camera, check the reception of the receiver before final installation. Have someone hold the camera in the area to be monitored. Have another person move the receiver to a variety of locations throughout the house to check reception. If interference or other problems occur, refer to the Troubleshooting Guide.

To install the system, follow these steps:

-Select the channel (Channel 1-4, as indicated on Channel Label) to be used on both the camera and receiver. NOTE: Make sure the camera and receiver are set to the same channel (1, 2, 3 and 4).

Channel selection on the camera

To set the channel selection switch on the camera, proceed as follows: -To set the channel selection switch, please take a pointed object, e.g. a ballpoint pen and select the desired channel switch (no. 1 to no. 4) to position "ON". The selected channel always remains active. Only one channel may be activated at one time.

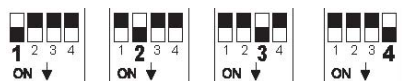


Channel selection on the receiver

a) Manual channel selection:

To set the channel selection switch on the receiver, please take a pointed object, e.g. a ballpoint pen and select the desired channel switch (no. 1 to no. 4) to position "ON".

The selected channel always remains active. Receiver Set to Receiver Set to Receiver Set to Receiver Set to Channel 1 Channel 2 Channel 3 Channel 4



b) Auto-scan mode:

If there is more than one camera in operation, you can allow the channels to run through automatically (scan mode). For this just simply select desired channel on each camera, and adjust the channels to on position on receive accordingly. On monitor you will see the channel change accordingly at an interval of 5 seconds.

If not all four channels are occupied with cameras, you have the possibility to block channels which are not occupied (position "OFF") on both camera and receiver. These will simply be left out in the auto-scan mode.

-The aerial of the radio camera can be adjusted to ensure the best possible transmission quality. Please rotate them carefully so that they are vertical. The aerial can only be rotated within a certain range. Do not rotate the aerials over and beyond the rotation limits with force as they could be destroyed.

-Alter the channel set on the radio camera and on the receiver (channel selection switches and if transmission is disturbed,) See also "Elimination of disturbances". -To switch off the devices, proceed in the opposite order to switching them off.

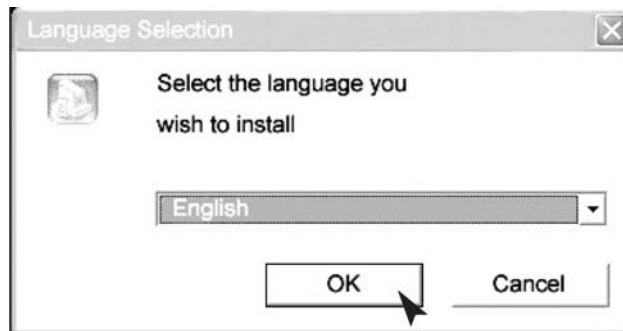


Always pull the plug-in power units out of the mains socket if not used for a longer period.

Software installation:

CamGuard Security System (Home Edition)

1. Double click on CamGuard installation program.
2. Select the language you wish to install, and press [Ok].



4. Click [Next] to proceed the installation for CamGuard Security System (Home Edition).
5. Click [Yes] to proceed the installation, when the agreement is accepted.
6. Select the destination location you wish to install the program (ex: C:/, D:/), and click [Next] to install the program.



9. Finally, click [Finish] when the software is fully installed.

USB Video Device Driver Setup



1. Click [Next] to install the USB Video Device Driver.

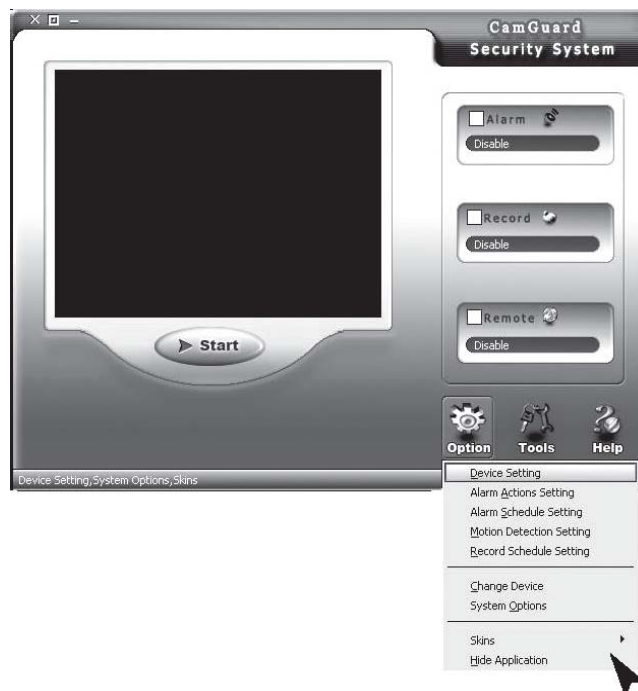
USB Audio Device Driver Setup

1. Click [Next] to install the USB Audio Device Driver, and click [Finish] when installation is finished.



Device Setting:

Select “Device Setting” under “Option”.



Device: The video device can be used the listed here in your computer, please choose one for source of video.

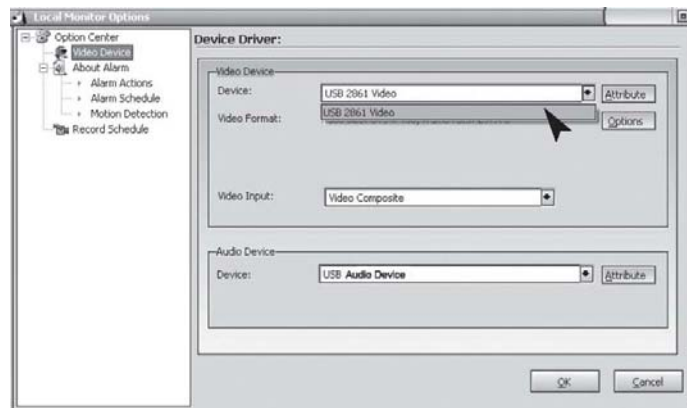
Attribute: Display dialog box of the selected video device.

Options: Display and set size and frame rate of the selected video device.

Audio Device

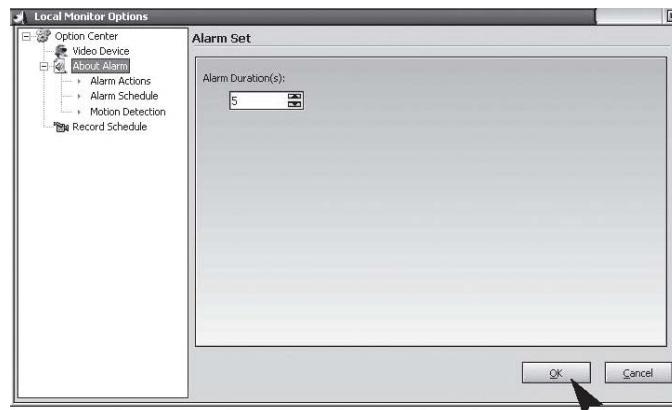
Device: The audio device can be used the listed here in your computer, please choose one for source of audio. You can leave it empty.

Attribute: Display dialog box of the selected audio device.



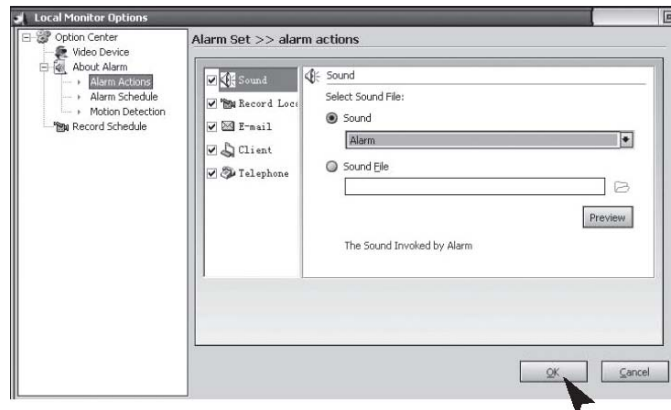
About Alarm:

Alarm Duration (s): The duration between the time when something abnormal is detected to the time when the alarm is closed.



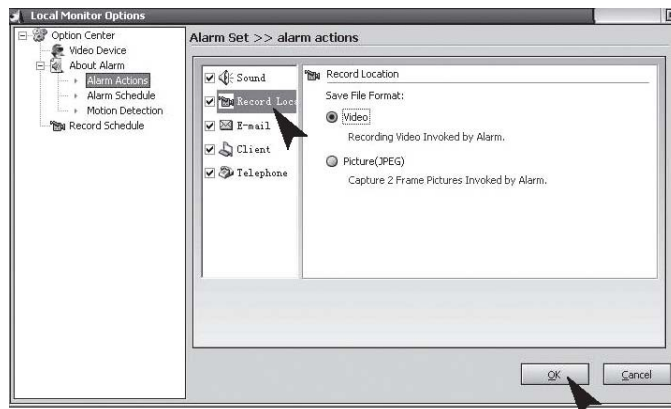
Alarm Actions:

1. Sound: When any abnormality is detected, the program will play a stream of sound to scare the invader away. You can either select the sound effects provided by the program or select sound files of your own. The program provides some sound effects for direct selection. Select "Sound" first and then select one from the list. Click "OK" to save the setting. You can also select other files on your own disk. Select "Sound files" first and then click the file folder button on the right. Select a sound file (*.wav) on the disk and click "OK" to save the setting.



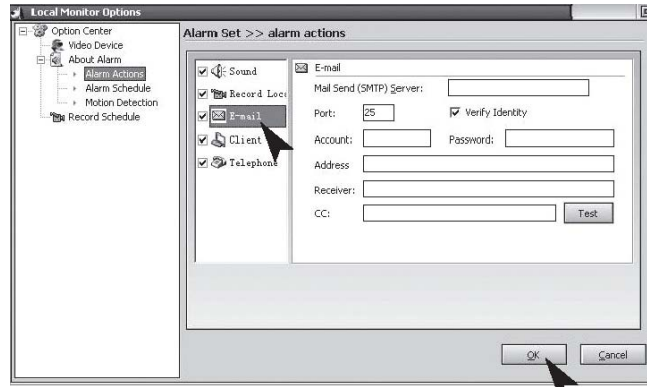
Record location:

2. When any abnormality is detected, the program will automatically save the images or video data on the locale. You can set to save images or video. In "Locale File Format", you can select to save as "Image(JPEG)" or "Video". If you select to save as image, a Jpeg image will be saved every 0.5 second from the moment when abnormality is detected until the end of the alarm. If you select to save as video, then the locale video will be saved from the moment when abnormality is detected.



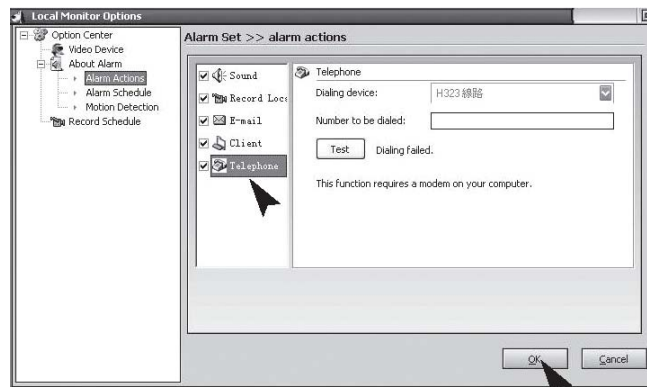
Email:

3. When abnormality is detected, the program will inform you by Email automatically with the images before and after the abnormality as attachment. "Mail SMTP Server", the server that sends email. Details are available from the mailbox provider. "Port", the port of the SMTP server to provide service, which is 25 in general. Details are available from the mailbox provider. "Verify Identity", account authenticate type; "Account", the account of email; "Password", the password of email; "Recipient", the email account to receive alarm notification; "Copy to", if others are required to be notified, their accounts can be input here. For multiple accounts,



Telephone:

4. When abnormality is detected, the program will dial the telephone number preset through the modem installed on your PC. To enable the function, you need to install Modem on your PC with telephone line connected. "Dialup Device", the list shows all dial-up devices on your computer.. Please select your modem here. "Call Number", this number will be called for alarm notification "Test", Test dialing.



Alarm Schedule:

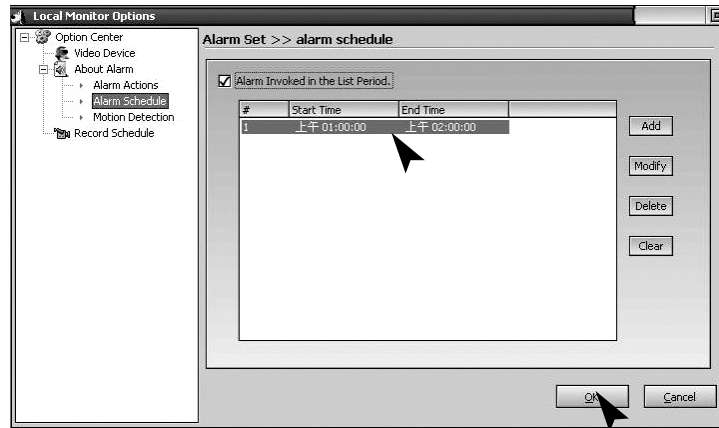
Set the system to monitor the locale only in the specified period of time. Only within the period set by you will the system give out alarm for any abnormality detected. Thus, you can set the system to monitor only when you are on-duty. First of all, if you want to use this function, you should check and select the option "Alarm Invoked in the List Period".

New: To add a new time period;

Modify: To modify the time period currently selected;

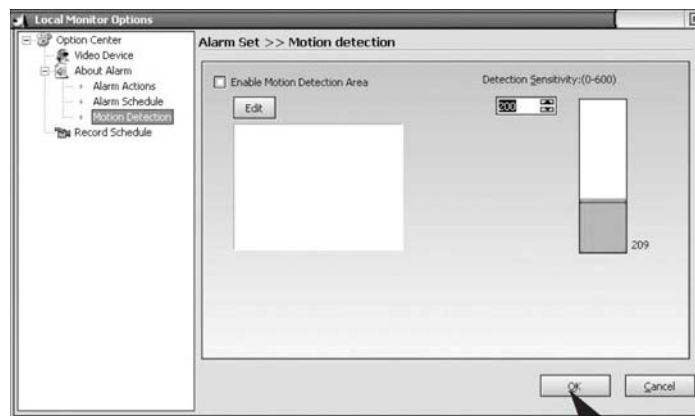
Delete: To delete the time period currently selected;

Clear: To delete all time periods.

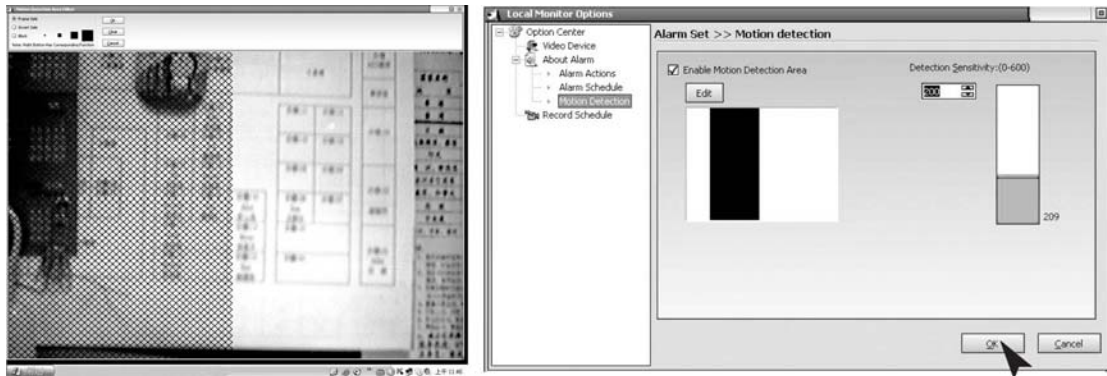


Motion Detection:

CamGuard Security System allows the monitoring area and sensitivity to be set according to locale conditions. Motion Detection Area Setting: Motion detection area can be set and only in case of abnormality detected in this area will the alarm be triggered. Edit: To edit the monitoring area. Detection Sensitivity: This is the value of motion detect sensitivity for triggering the alarm. Sensitivity Indication: The green area indicates the current value detected, while the red line indicates the detection value set by you. When the green area exceeds the red line, it indicates that the alarm is triggered. The program will give out beep sound as prompt.



Click the "Edit" button to edit the monitoring area. The program provides three editing modes: to make rectangular selection with the mouse, inverse the selected area, and fill up a color block. When using rectangular selection or color block, you can click the right button of the mouse to delete the selected area. Clear: Clear the monitoring area.



Record Schedule:

To record video on the locale in the specified time period.

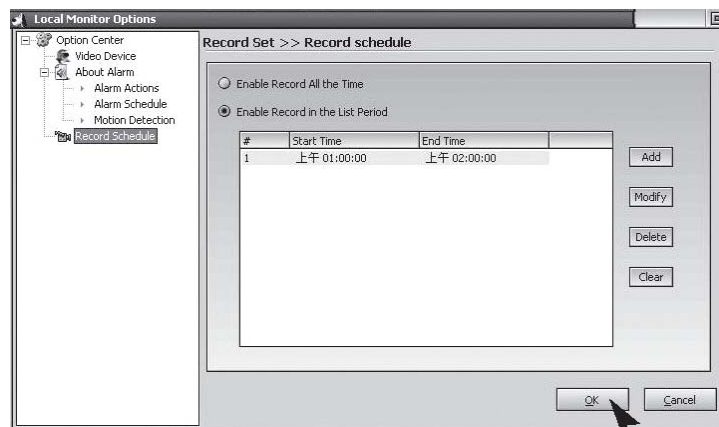
If you want to use this function, you should first check the option "Enable Record in the list period" to select it

New: To add a new time period;

Modify: To modify the time period currently selected;

Delete: To delete the time period currently selected;

Clear: To delete all the time periods.



Remote Options

Enable remote service account: Since IP address of your computer will be changed for some connection modes each time you connect to the Internet, you need to know the current IP address of your computer each time you conduct remote access, which is very inconvenient. After you enable remote service account, you can use fixed access address to conduct remote access. Application for an account is free, which can be made by clicking "Free Account Registration".

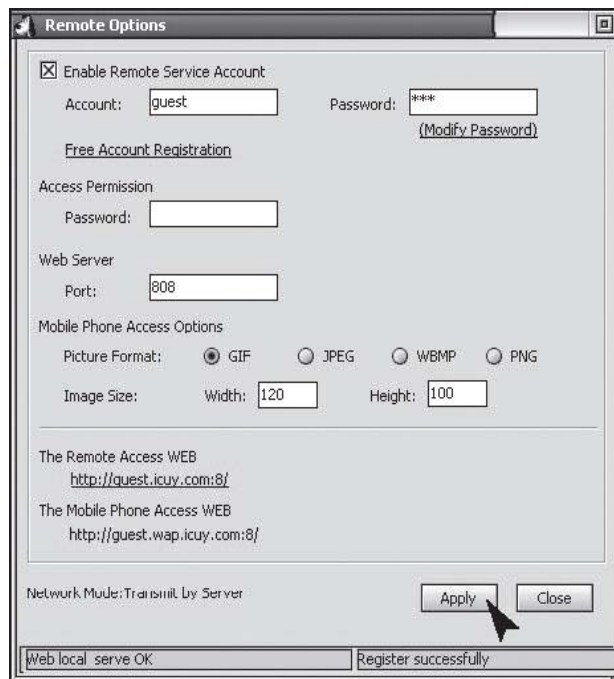
Click the "Remote Options" button on the toolbar of the main interface, or the "Tool" - "Remote Options" in the main menu to pop up the Remote Options window.

"Server Port": The port used by web server embedded in the program. There is no need to set this value in normal circumstance. But of course reconfigure this port

according to your requirement. If other Web server, such as MS IIS, is installed on your computer, then please assign other values. Otherwise conflict will occur.

"Access Permission": To set the account password for remote access. Both account and password are required when accessing. It is strongly recommended that you set this item to protect your privacy and the security of your computer.

Mobile Phone Access Setting: The program supports WAP mobile phone remote access. You can view the locale historical records on the phone in the form of images.



"Supported Image Format": Please select an image format supported by your WAP mobile phone. The program will automatically convert the locale images or historical records to this format according to your selection for convenient browse on your mobile phone.

"Image Size": To set the image size when access with WAP mobile phone according to its screen size.

"Remote Access Webpage Address": To display the addresses accessed from remote in the form of webpage.

"Mobile Phone Access Address": To display the address accessed with mobile phone.

"Connection mode": To display the current network connection mode.

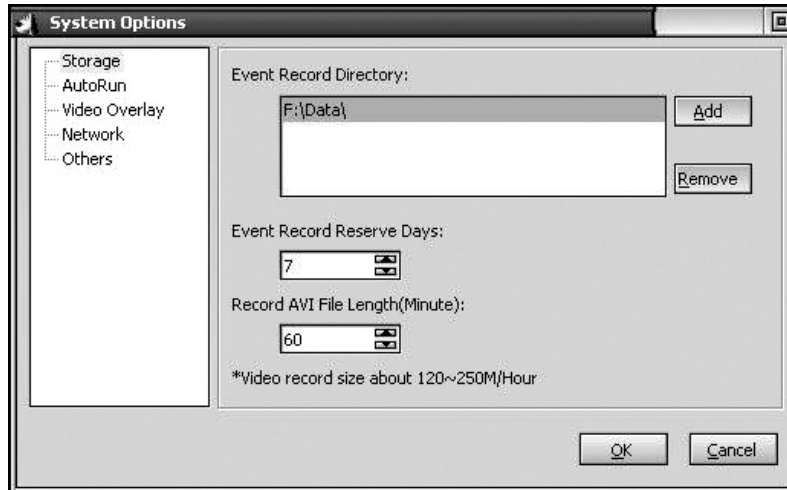
Enable Remote Service Account:

System Options - Storage

Path for Saving Record Files: Set the path for saving record files, which include scheduled record, alarm record, and quick record. You can set multiple paths for saving. Click the "Add" button on the right to add directory and click the "Delete" button on the right to delete the selected path.

Days for Retaining Record Files: The number of days for retaining the record files (including scheduled records, alarm records and quick records) on the disk.

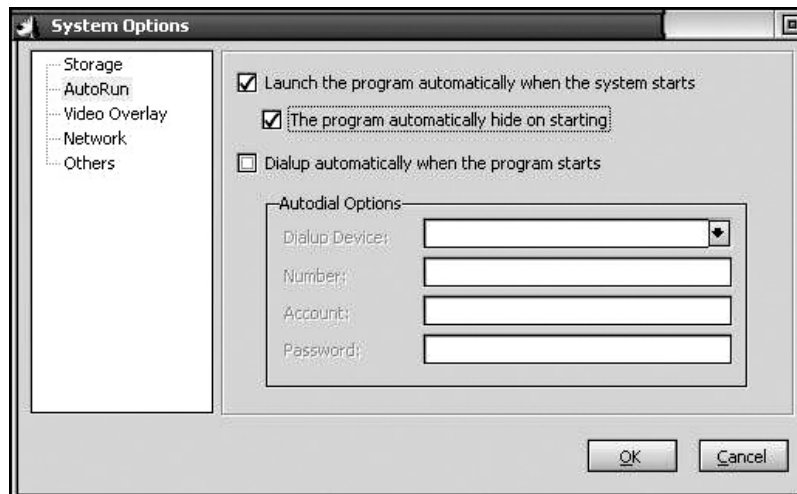
Files saved on the disk for more than the days set will be automatically deleted by the program. If disk space is less than 100M, the program will automatically delete the oldest record files.



System Options - Auto Run

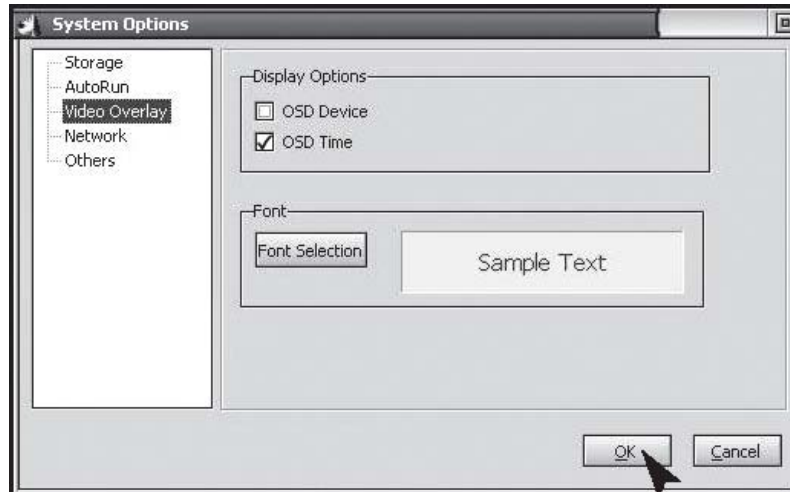
"Launch the program automatically when the system starts": Select this option to enable auto-run of the program when the system starts and resume the status before the previous shutdown.

"Dialup automatically when the program starts": Select this option to enable auto dialup to access the Internet according to the parameters set after the program starts. This setting is suitable for those networks that require manual dialup to access the Internet . The setting for specific dialup parameters is the same as that of system dialup.



System Options - On-Screen Display

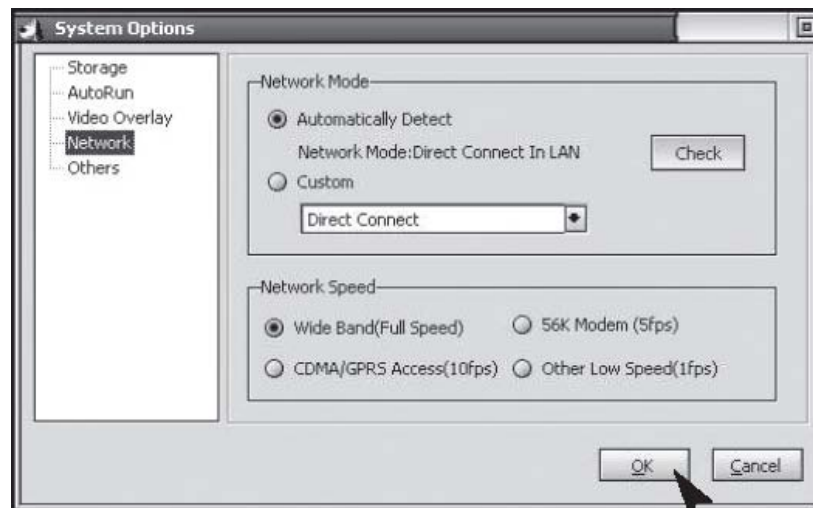
Display Device Name: To display the name of the device on the video or images captured. Display Time Stamp: To display the date and time on the video or images captured. Font: To set the font of the displayed content.



System Options - Network

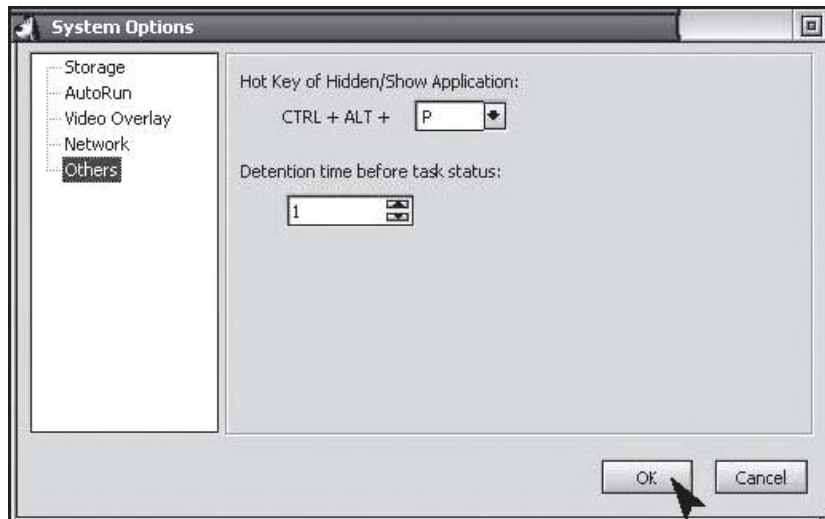
Internet Connection Mode: It can be set to either "Auto Detection" or "Direct Network Connection". In general, "Auto Detection" will do. In case that the program cannot detect out the network type, please set it to "Direct Network Connection".

Connection Speed: To set network speed. This setting determines the frame rate provided to the remote monitoring terminal. It should be set according to actual condition of Internet connection. Otherwise, the effect of viewing remote monitoring will be influenced.



System Options-Others

Display program hot keys: Hot keys will be set to show or hide program.



Technical Data

Model No.: CCD-680E

| | Camera | Receiver |
|-------------------------------|--|------------------------------|
| Operating voltage | 7.5V DC(plugin power unit) | 7.5V DC (plugin power unit) |
| Current consumption | 300 mA | 300 mA |
| Transmitting frequency | 2.4-2.4835Ghz | 2.4-2.4835Ghz |
| Modulation | FM | |
| Channels | 4 | 4 |
| Light sensitivity | 3 Lux | |
| Video output level | | 1 V _{p-p} / 75 Ohm |
| Audio output level, mono | | 1 V _{p-p} / 6000hm |
| Audio/Video Connection jacks | | 3.5 mm phone jack USB 2.0 |
| Picture sensor | 1/3" CMOS color 628x562 pixel (PAL) or 510x492 (NTSC) | |
| Resolution | 330 TV lines (horizontal), | |
| Microphone | mono | |
| Picture | Color | |
| Range | approx 100 m at free visibility | |
| Operating temperature | 14 to 122 | |
| Mass approx. (without tripod) | 160g | 122.3g |

| | | |
|------------------------------|--------------------------|---------------------------------|
| Dimensions without Aerial | 128x72x60 (mm) L x W x H | 100 x 76 x 26 (mm) L x W x H |
|------------------------------|--------------------------|---------------------------------|

Maintenance

The devices are maintenance-free, so never disassemble them. The guarantee becomes void to the expiration of the warranty! We will not assume any liability for when you disassembled the appliance. Only clean the outside of the devices with a soft, dry cloth or a brush. Prior to cleaning, remove the devices from all voltage sources.

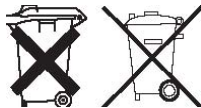


Do not use any carboxylic cleaning agents or petrol, alcohol or similar. These attack the surfaces of the devices. Besides, the vapors are hazardous to your health and explosive. Do not use any sharp edged tools, screw drivers, metal brushes or similar for cleaning.

Disposal

If the camera system no longer functions respectively can no longer be repaired, it must be disposed of according to the valid statutory regulations.

Disposal of spent batteries / accumulators



You are required by law (Battery Ordinance) to return all spent batteries and accumulators. Disposing of spent batteries/accumulators in the household waste is prohibited!

Batteries / accumulators that contain hazardous substances are marked with the symbols on the side. These symbols indicate that it is prohibited to dispose of these batteries/ accumulators in the household waste. The abbreviations for the respective heavy metal are: Cd= cadmium, Hg= mercury, Pb= lead. You can return spent batteries respectively accumulators that can no longer be charged free of charge to the collection points in your community, our outlets or everywhere else where batteries or accumulators are sold.

You thus fulfill the legal requirements and contribute to the protection of our environment!

Troubleshooting

With this camera system, you have purchased a product that reflects the latest state of technology and is safe to operate. Still there might be problems or malfunctions. At this point, we want to tell you how to easily remedy possible malfunctions yourself.



Observe the safety notices under all circumstances!

| Error | Possible Cause |
|--|---|
| No image and no sound | <ul style="list-style-type: none">• Camera or receiver is not supplied with electricity.• Is the power pack plugged in correctly?• The distance between the camera and receiver is too long |
| The image/sound is distorted | <ul style="list-style-type: none">• The range of the system was exceeded. Shorten the distance• There is a strong interference source (e.g. electric engine, walkie-talkie...etc.) nearby. |
| Flickering/ running image | <ul style="list-style-type: none">• Strong spotlight in the cover range of the camera. |
| Normal sound, image is too light or dark | <ul style="list-style-type: none">• Surveillance monitor (TV) is adjusted wrongly (readjust brightness).• Strong spotlight in the cover range of the camera. |
| White image only on the monitor | <ul style="list-style-type: none">• The supply voltage is too low (change batteries or power pack operation) |



Other repairs as described above may only be performed by an authorized workshop.

Federal Communication Commission Interference Statement

This equipment has been tested and found to comply with the limits for a Class B digital device, pursuant to Part 15 of the FCC Rules. These limits are designed to provide reasonable protection against harmful interference in a residential installation.

This equipment generates, uses and can radiate radio frequency energy and, if not installed and used in accordance with the instructions, may cause harmful interference to radio communications. However, there is no guarantee that interference will not occur in a particular installation. If this equipment does cause harmful interference to radio or television reception, which can be determined by turning the equipment off and on, the user is encouraged to try to correct the interference by one of the following measures:

- Reorient or relocate the receiving antenna.
- Increase the separation between the equipment and receiver.
- Connect the equipment into an outlet on a circuit different from that to which the receiver is connected.
- Consult the dealer or an experienced radio/TV technician for help.

FCC Caution :To assure continued compliance, any changes or modifications not expressly approved by the party responsible for compliance could void the user's authority to operate this equipment. (Example - use only shielded interface cables when connecting to computer or peripheral devices).

This device complies with Part 15 of the FCC Rules. Operation is subject to the following two conditions:

(1) This device may not cause harmful interference, and (2) This device must accept any interference received, including interference that may cause undesired operation.