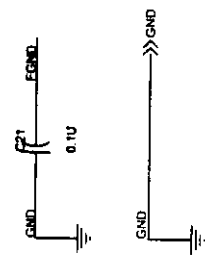
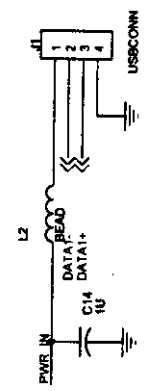
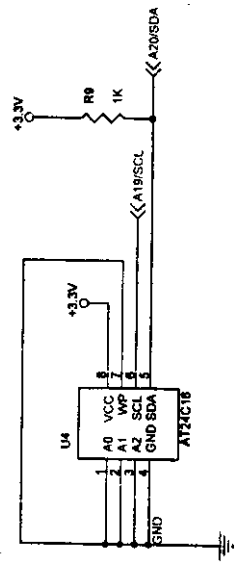
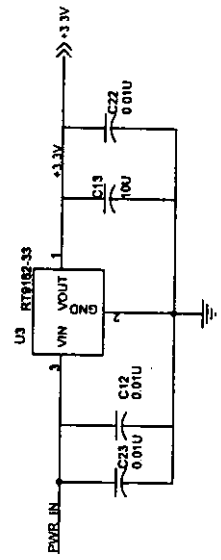
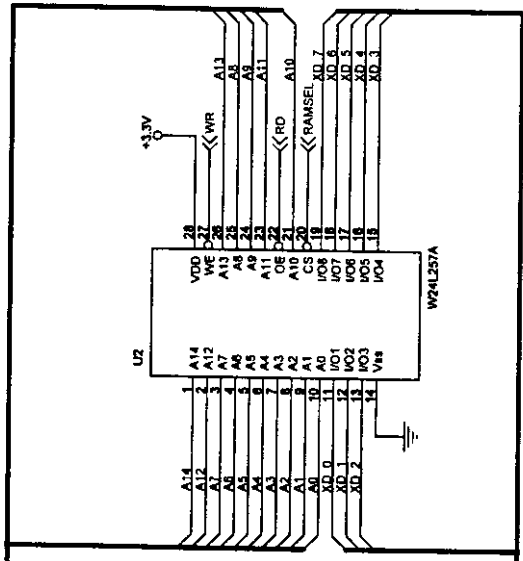



EXHIBIT D

Circuit Diagram

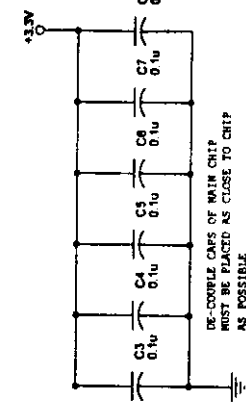
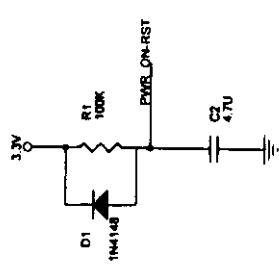
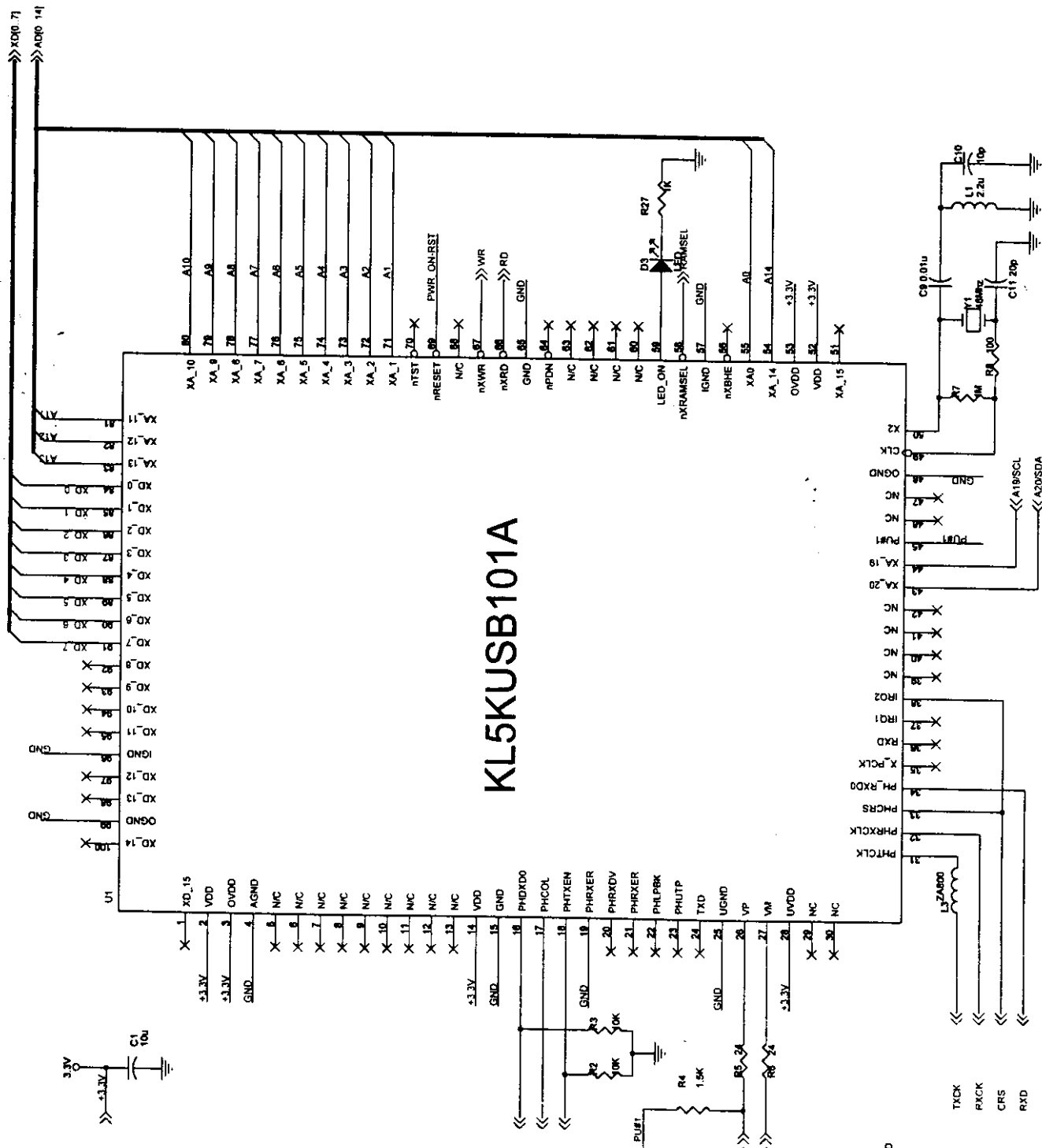
0.141 >>



	
CIS TECHNOLOGY INC. FILE : U001T --RAM ROM Connect Power ENGINEER : Sky Wang PIN : PL4006	
File	RAM ROM CONNECT POWER
Size	Document Number
B	CIS-T00RCATV2-DUMB-HUB-V1
Date	Monday, June 28, 1999
Sheet	3 of 3
	1.1

0.141 >>

KL5KUSB101A



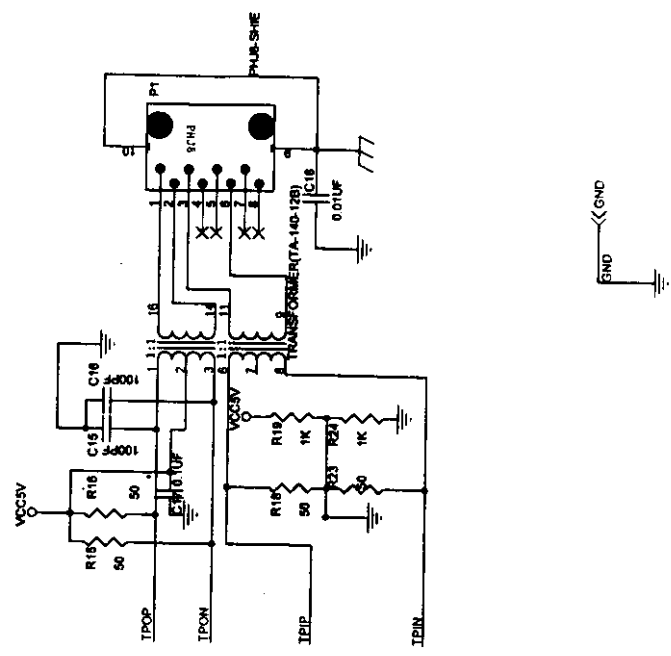
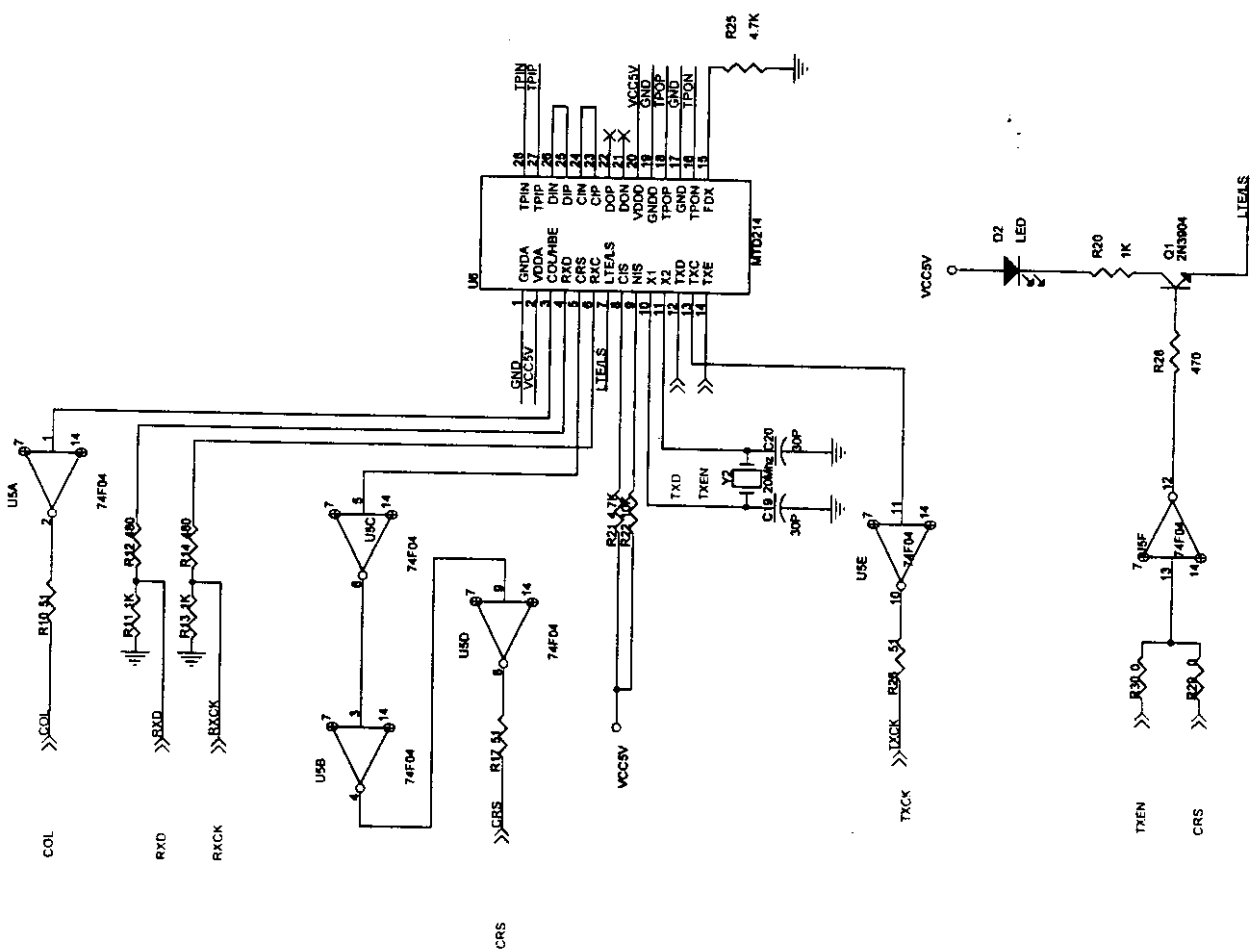
DE-COUPLE CAPS OF MAIN CHIP
MUST BE PLACED AS CLOSE TO CHIP
AS POSSIBLE



CIS TECHNOLOGY INC.
FILE : U001T --Black Diagram
ENGINEER : Shy Wang
P/N : PL4005

File : U001T Ethernet Controller (KL5KUSB101A)
Doc Number : CIS-T000CAT10Z-DUMB-HUB-V1
Rev : 1.1

TACK
RACK
CRS
RXD



CIS TECHNOLOGY INC.
 FILE : U001T -> Black Diagram
 ENGINEER : Shy Wang
 P/N : PL4008

PHY TRANSFORMER PART

Document Number
 CIS-TD0CAT7CJUNG-HUB-V1
 Date: Monday, June 28, 1999

Rev	1.1
Size	A
Doc	PHY TRANSFORMER PART