

hp

REF 107.0 dB μ V

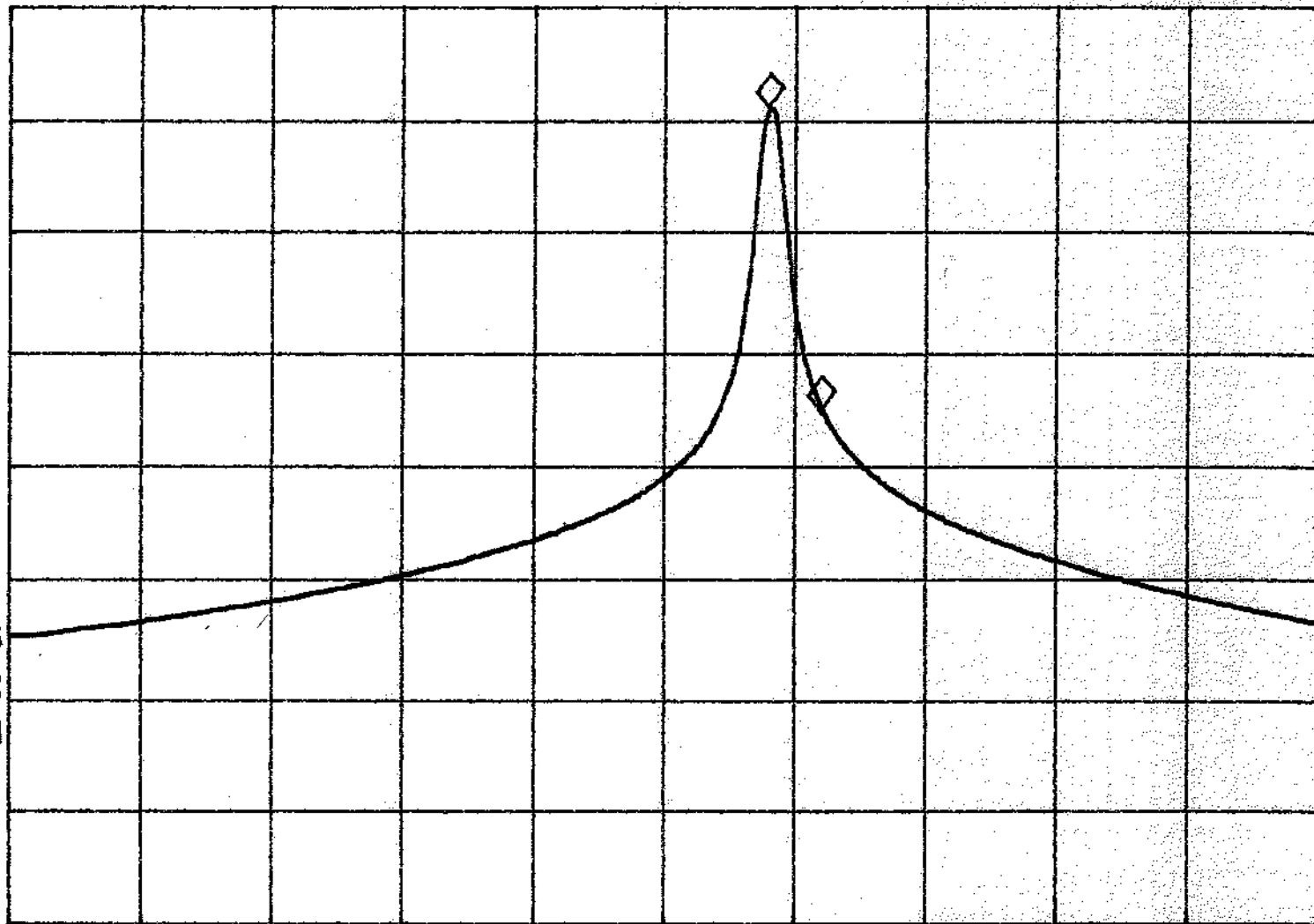
AT 10 dB

MKR 12.8 kHz

-26.14 dB

PEAK
LOG
10
dB/

VA SB
SC FC
CORR



START 26.9600 MHz

#RES BW 3.0 kHz

VBW 3 kHz

STOP 27.2800 MHz

#SWP 1.50 sec