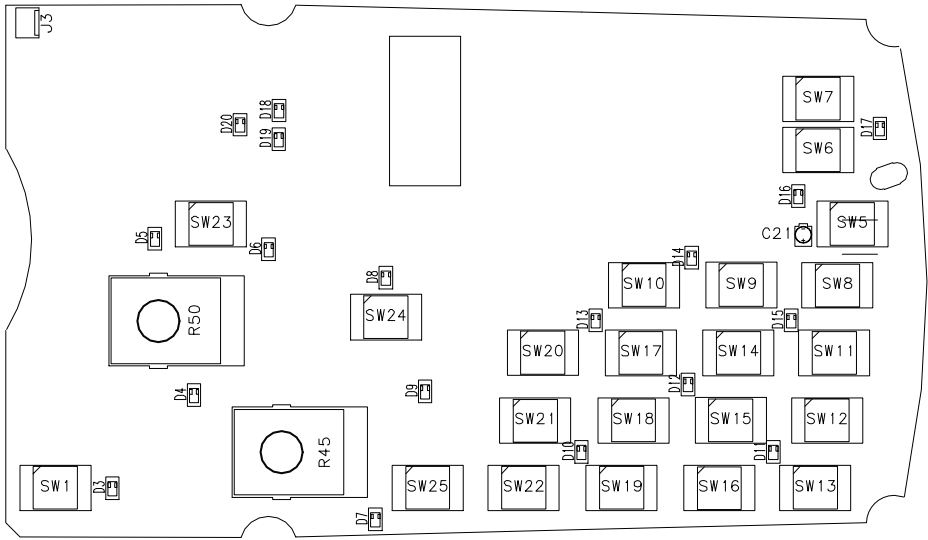


USED ON



THIS DOCUMENT IS MCMURDO LIMITED COPYRIGHT AND CONTAINS PROPRIETARY OWNED PROPERTY RIGHTS AND CONFIDENTIAL DATA. RIGHTS ARE STRICTLY RESERVED, THE MUST NOT BE USED EXCEPT FOR THE AGREED PURPOSE, UNAUTHORISED USE, REPRODUCTION, TO ANY THIRD PARTY IS NOT PERMITTED WITHOUT THE PRIOR WRITTEN AUTHORITY OF LIMITED. THIS DOCUMENT IS TO BE RETURNED TO MCMURDO LIMITED WHEN THE AGREED FULFILLED.

INTELLECTUAL  
INFORMATION  
OR ISSUE  
MCMURDO  
PURPOSE IS

				2	C2133/2161	27-06-02	ORH
				1	C2080	31-01-02	
ISSUE	CHG.No.	DATE	APPD	ISSUE	CHG.No.	DATE	APPD

FINISH :-

DRAWN

APPROVED

ORH

RELEASED

SCALE

NTS

MATERIAL :-	DIMENSIONS IN :-	3RD ANGLE PROJECTION B.S.8888	DRAWING No. 84-510D	SHT. 1 OF SHT. 2
TITLE. VHF DSC CONTROL BOARD	McMURDO LIMITED PORTSMOUTH-HAMPSHIRE-ENGLAND	TOLERANCES UNLESS OTHERWISE STATED WHOLE No. $\pm 0.5$ ANGULAR DIMS $\pm$ 1 DEC PLACE $\pm 0.1$ 2 DEC PLACE $\pm 0.05$ DRILLED HOLES $\pm$		A4