

# HANDHELD COMPUTER

## **LXtrEme™ MX2** Product Data Sheet

### INDUSTRIAL ERGONOMICS

LXE's advanced new line of rugged handheld computers - the LXtrEme series - has been developed to meet the most demanding requirements for a broad array of wireless and mobile computing.

LXE's LXtrEme MX2 provides open standards, powerful applications and ease of use to allow these portable data collection terminals to integrate seamlessly into the supply

chain systems of companies involved in logistics, manufacturing, retail warehousing and distribution. MX2 provides an ideal batch collection solution, and excels in data collection over wide on-campus areas where physical distances prohibit hard-wiring or when real-time information is critical. It offers a choice of PCMCIA card 2.4 GHz FHSS, or DSSS radios.

### 486 PC COMPATIBILITY

With an advanced 486-class processor capable of running many advanced applications, the LXtrEme MX2 is PC compatible. It allows you to use standard DOS applications

and existing software development tools to simplify your application development process and improve your time to market.

### EASY TO USE KEYBOARD

The MX2 features a large graphic LCD display and 38-key alphanumeric keypads with single- and double-click alpha access, five dedicated, plus five shifted function keys, Western European

character support. The tactile response keypad is specially coated to resist abrasion and damage from harsh chemicals.

### FULL-SHIFT BATTERIES

A powerful 850 mAh NiMH battery supports a full eight-hour shift of normal use of the MX2. Should the need arise, the batteries can be easily

swapped while maintaining data integrity with an internal rechargeable back-up battery.

### MODULAR DESIGN

The MX2 has a sleek, IP54-rated, environmentally sealed case and built-in front-shooting laser. Included are 8 MB of RAM, 2 MB flash ROM, and an internal PCMCIA

card slot. The wireless terminal supports LXE's ANSI, IBM TN5250, and TN3270 terminal emulation software with panning support to a full virtual screen.



# LXE Model MX2 Terminal

The LXE Model MX2 is low cost, vertical hand-held terminal (VHHT) typically used in industrial , warehouse or retail settings. The MX2 is equipped with a PCMCIA slot, bar-code scanner and optional RS232 port. The MX2 is used by the operators to track smaller quantities of inventory, order entry and other applications of this nature. The information gathered is then either downloaded via an RS232 link, or transmitted to an LXE Access Point via an RF link. The Access Points are connected to a wired LAN via an Ethernet connection.

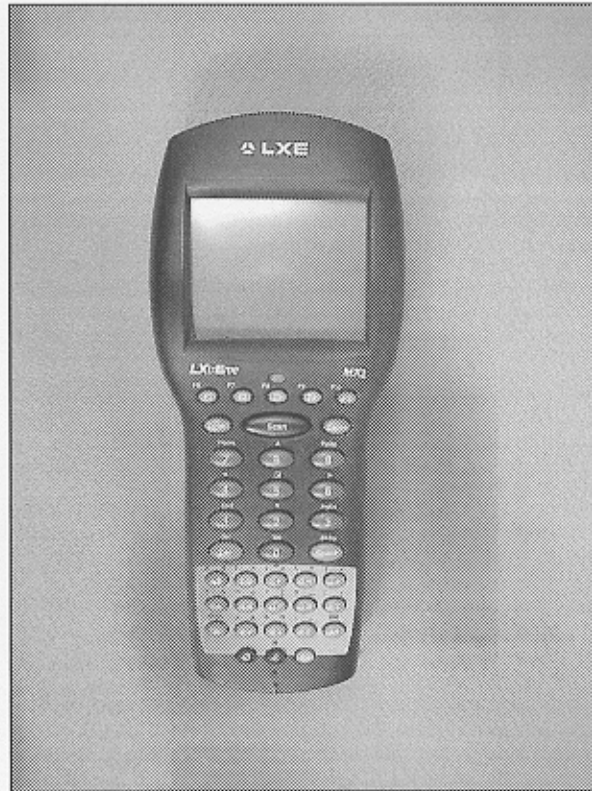


Figure 1: MX2 Front View

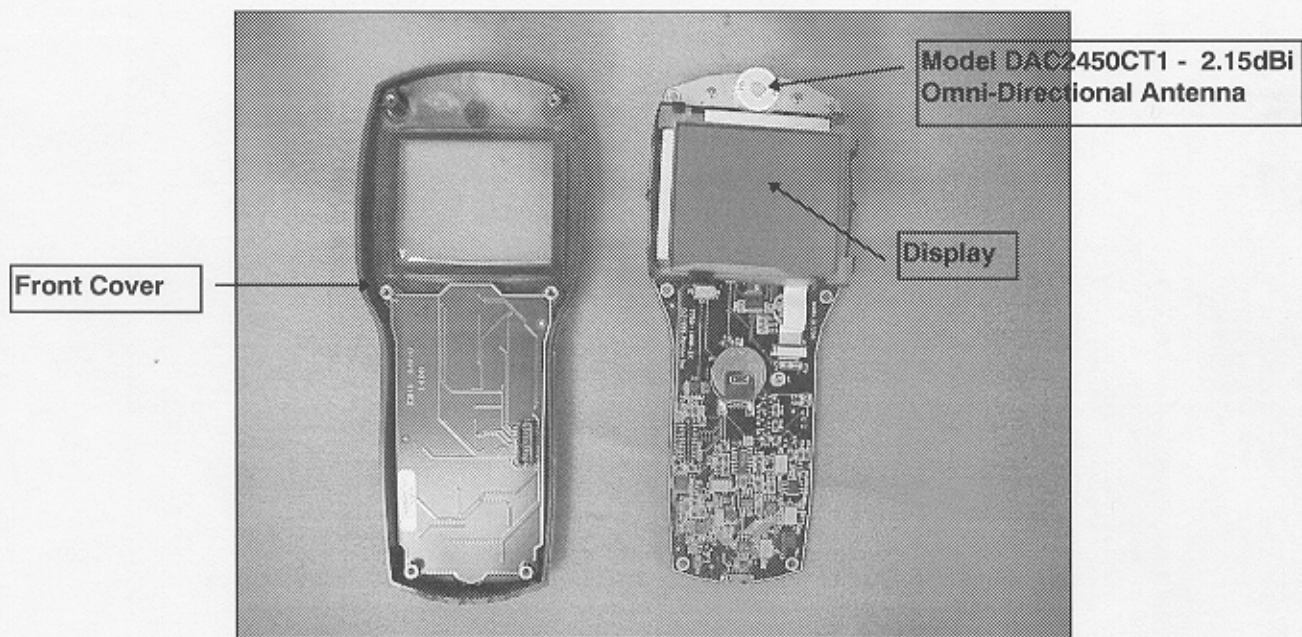


Figure 2: MX2 Opened - Front View with Antenna

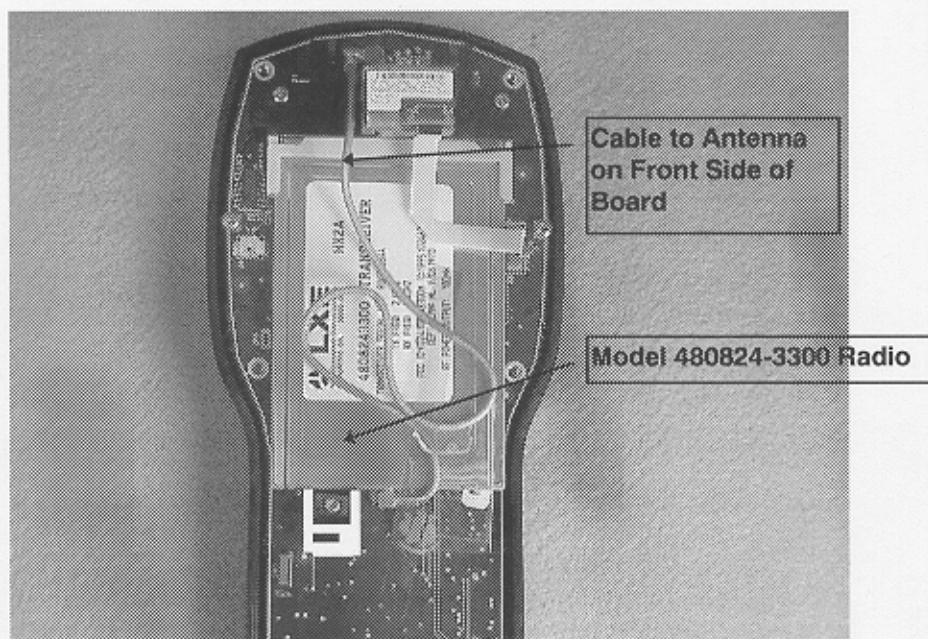


Figure 3: MX2 Opened - Rear View with Radio

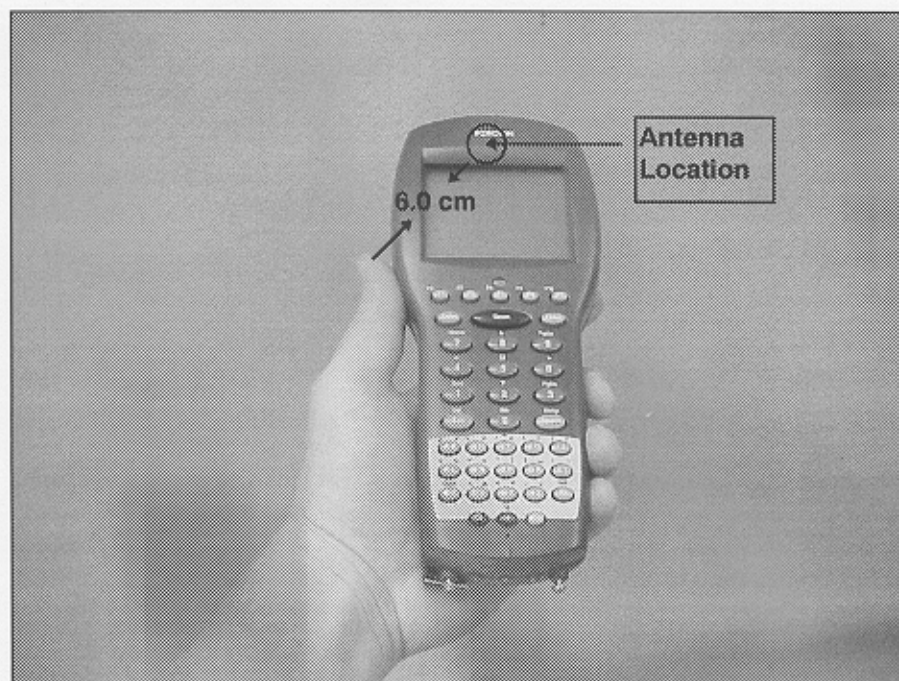


Figure 4: Typical User Configuration

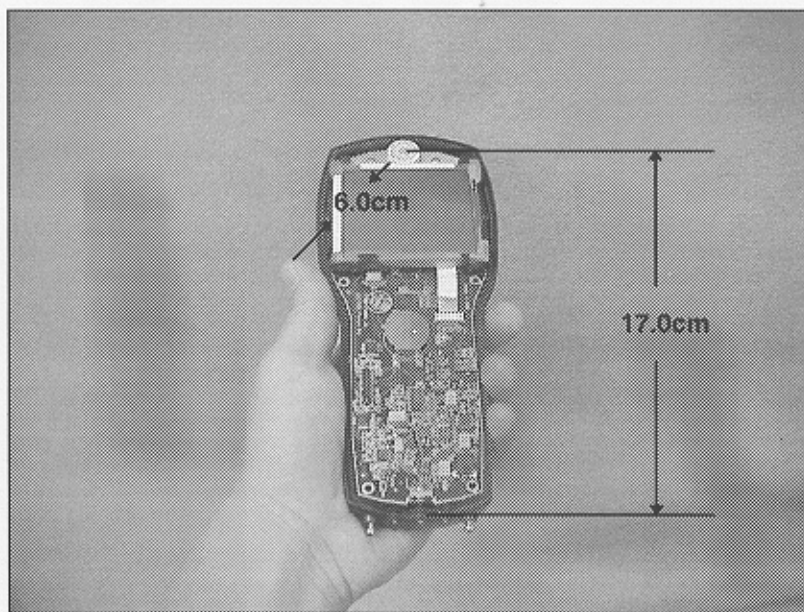


Figure 5: Antenna Location Relative to the User