

Alpha-Numeric

HANDHELD COMPUTER

LXtrEme™ MX1

Product Data Sheet

Numeric-Alpha

INDUSTRIAL ERGONOMICS

LXE's advanced new line of rugged handheld computers—the LXtrEme series has been developed to meet the most demanding requirements for a broad array of wireless WAN, LAN and mobile computing applications. Designed to withstand repeated drops to hard surfaces and tough enough to function in all kinds of

outdoor environments, yet still lightweight and easy to use for long work shifts. Convenient snap-off handles and well-designed carrying cases maximize flexibility of use for improved productivity. Take a good look at LXE's LXtrEme MX1, the first model of the series and you will find impressive answers to your toughest questions.

486 PC COMPATIBILITY

With a 486 processor and MS-DOS v6.22 the LXtrEme MX1 allows you to use standard DOS applications and familiar programming languages

such as "C++" to simplify your application development process, improve your time to market, and maximize your return on investment.

EASY TO USE KEYBOARD

The LXtrEme MX1 offers keyboard configurations and flexibility found in no other handheld computer. Options include a backlit numeric keyboard with large optimally-arranged keys and numeric-alpha

and alpha-numeric keyboard configurations with phosphorescent keys. In addition, all keyboard configurations are specially coated to resist abrasion and damage from harsh chemicals.

FULL-SHIFT BATTERIES

A powerful 1500 mAh NiMH battery supports a full eight-hour shift of normal use of the MX1, and requires only

3 hours for recharging. Should the need arise, the batteries can be easily swapped with data integrity maintained.

MODULAR DESIGN

No other handheld computer gives you as much flexibility. Interchangeable bar code readers, five different keyboard/overlay combinations, 900 MHz or 2.4 GHz radios, batch or terminal

emulation, PCMCIA expansion cards, infrared communication ports, handles, straps, cases, mounting brackets, connections for external scanners, printers... the choices are yours!

Numeric

The LXE Model MX1 is a high end, vertical hand-held terminal (VHHT) typically used in industrial , warehouse or retail settings. The MX1 is equipped with a PCMCIA slot, bar-code scanner and optional RS232 port. The MX1 is used by the operators to track smaller quantities of inventory, order entry and other applications of this nature. The information gathered is then either downloaded via an RS232 link, or transmitted to an LXE Access Point via an RF link. The Access Points are connected to a wired LAN via an Ethernet connection.

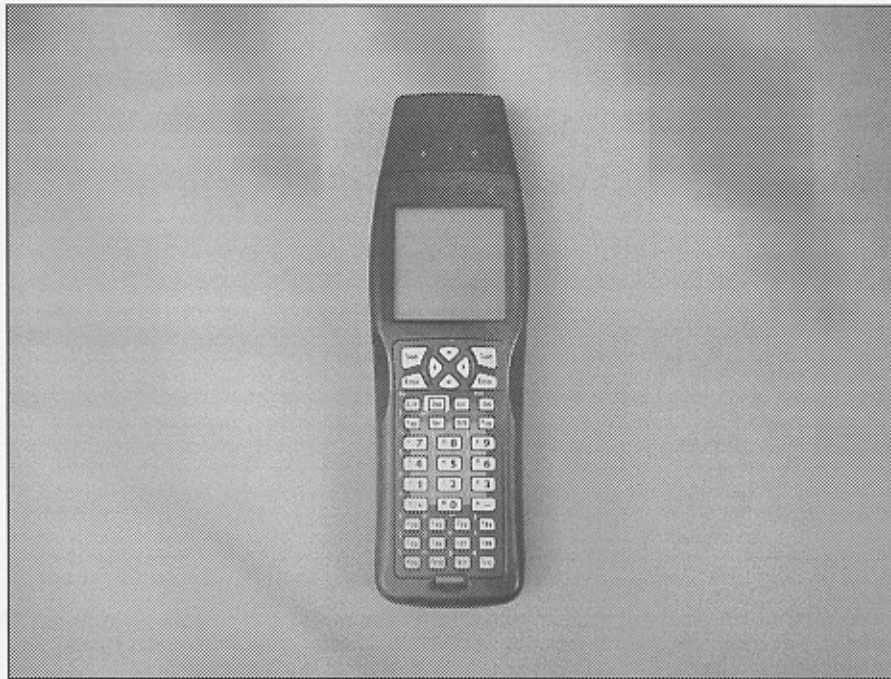


Figure 1: LXE Model MX1

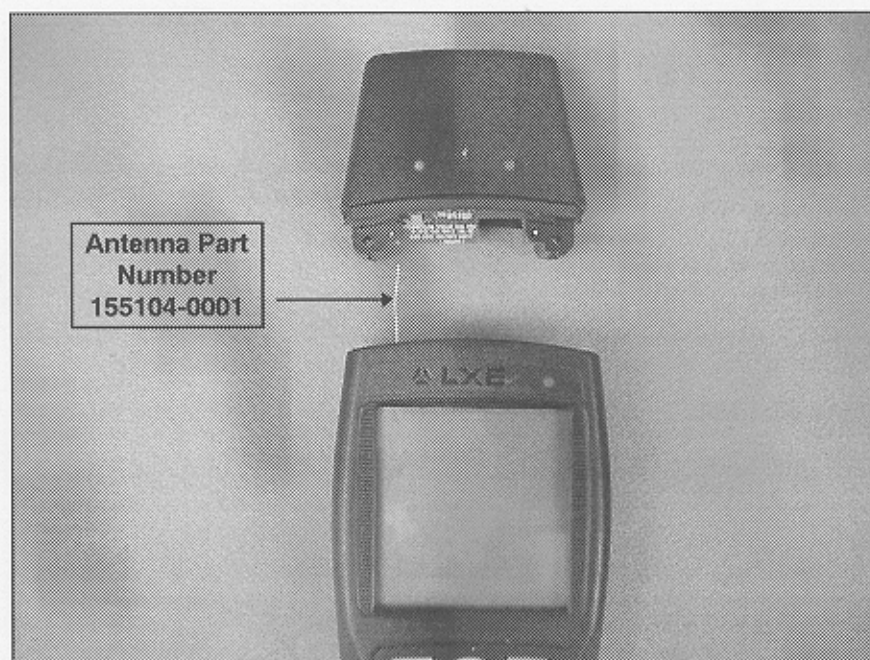


Figure 2: MX3 with End-cap Removed Exposing Antenna

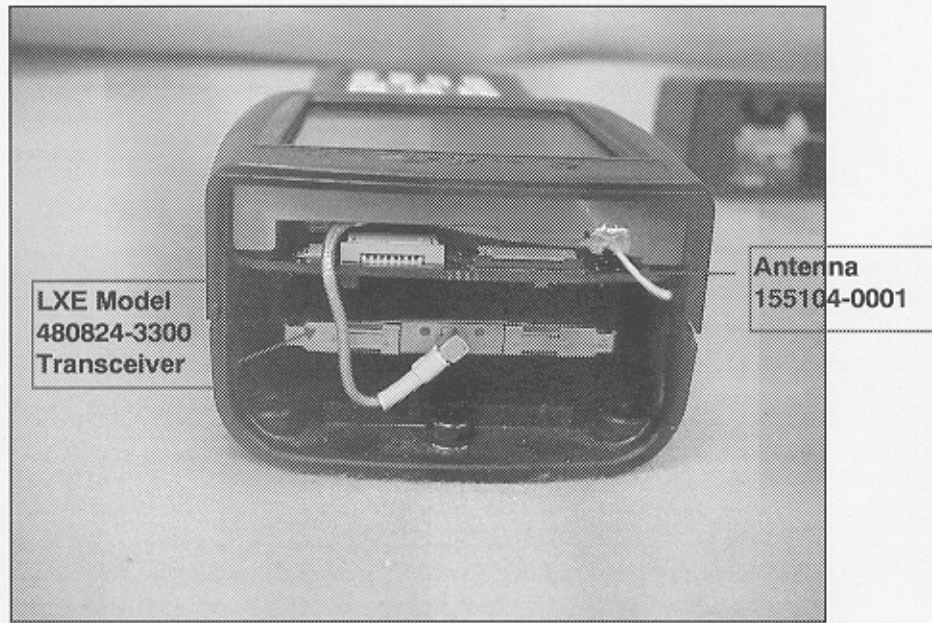


Figure 3: Internal View Through End-cap

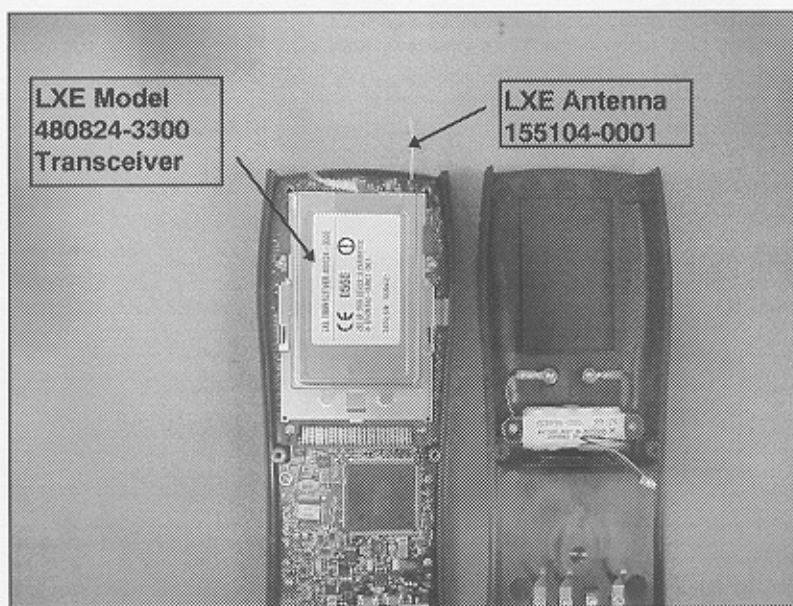


Figure 4: Internal View with Back Cover Removed

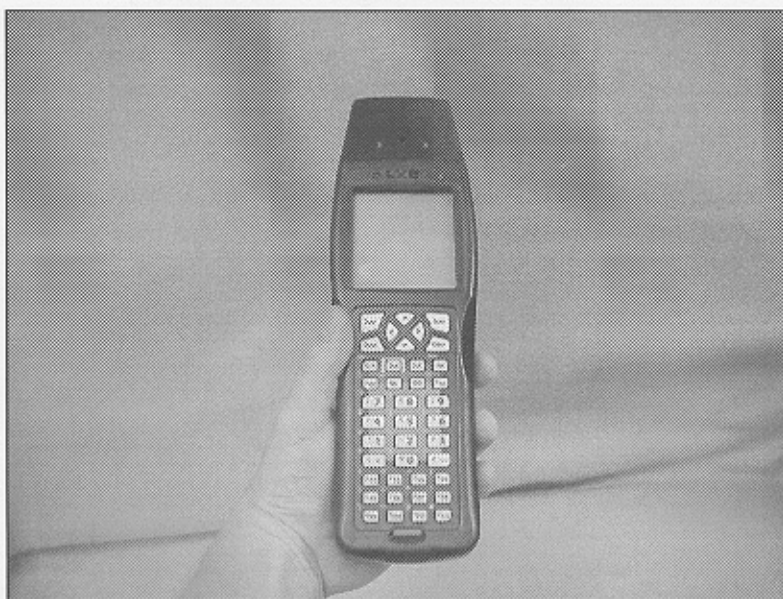


Figure 5: Typical User Operation

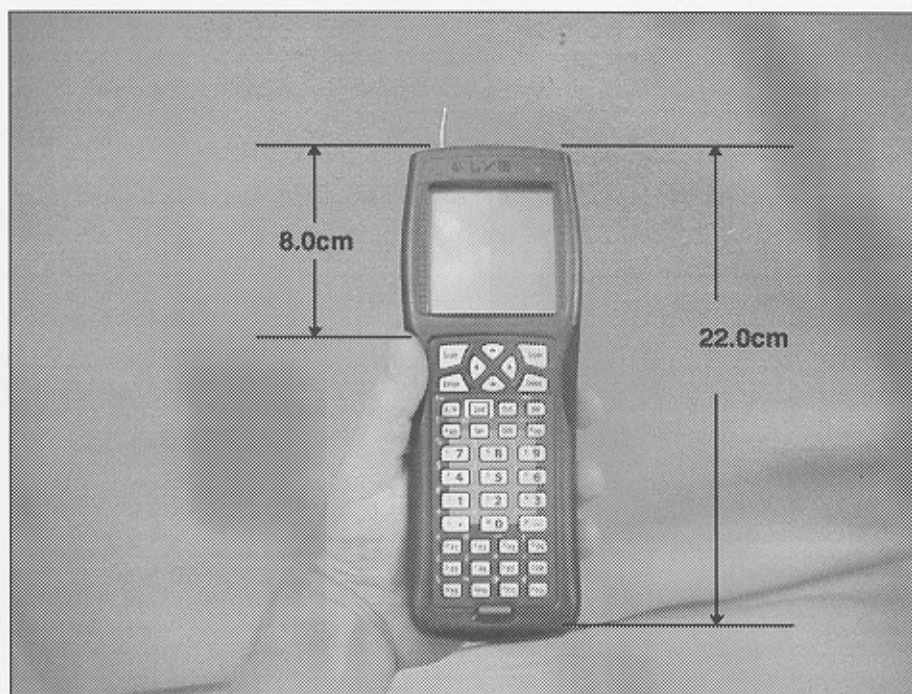


Figure 6: End-cap Removed Showing Antenna Location Relative to the User