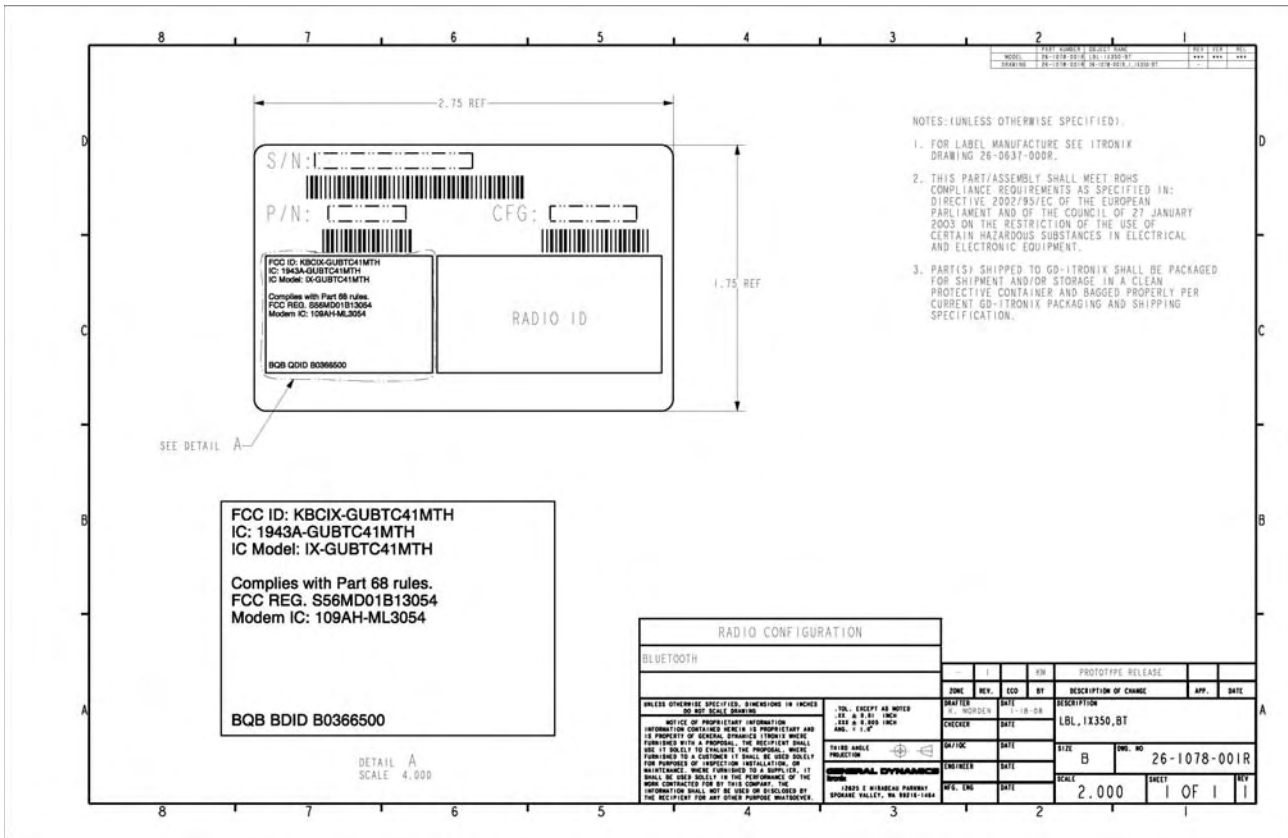


**FCC and IC ID Label Facsimiles for FCC ID: KBCIX-GUBTC41M-TH, Bluetooth Co-located with FCC ID: KBCIX-4965AGN, WLAN and Label Location on Host IX350**

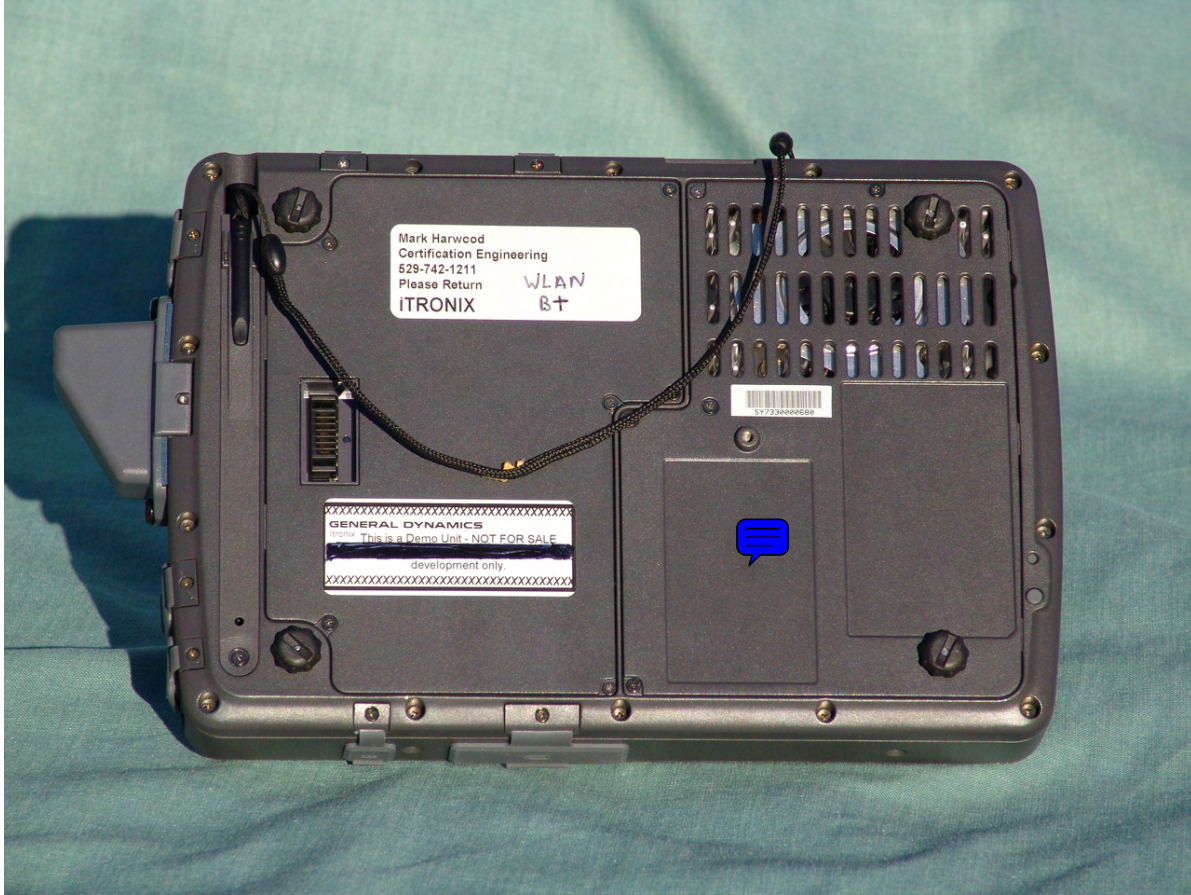
FCC/IC ID Label Facsimile shown below



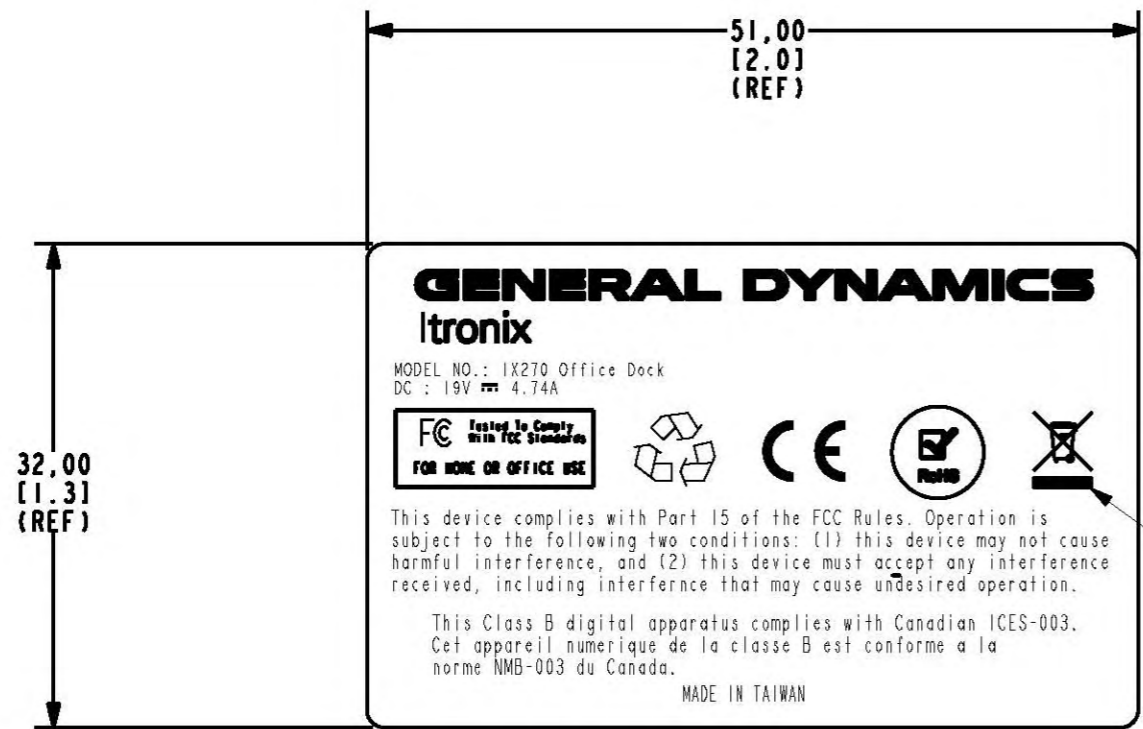
The following three pages contain:

- 1.) Photos of FCC/IC ID label location on the IX350
- 2.) Facsimile of the FCC Part 15 Compliance Statement
- 3.) FCC/IC Label for Co-Location with FCC ID: KBCIX-4965AGN, Bluetooth Module.

### FCC/IC Label Identifier Location



MODEL	PART NUMBER	OBJECT NAME	REV	VER	REL
26-1043-001R	26-1043-001R	26-1043-001R			
DRAWING	26-1043-001R	26-1043-001R.A.LBL-FC-APPD-US-8D			



- NOTES: (UNLESS OTHERWISE SPECIFIED).
- MATERIAL: 3M 7818 MATTE SILVER POLYESTER W/#310 ACRYLIC ADHESIVE.
  - PRINTING: INK, ELECTRONIC IMAGING INC. #T80433074 OR EQUIV.
  - ALL MATERIAL MUST BE UL AND CSA APPROVED AND VENDOR MUST BE UL AND CSA RECOGNIZED.
  - SIZE OF LOGO TO MEET WEEE STANDARDS.
  - THIS PART/ASSEMBLY SHALL MEET ROHS COMPLIANCE REQUIREMENTS AS SPECIFIED IN: DIRECTIVE 2002/95/EC OF THE EUROPEAN PARLIAMENT AND OF THE COUNCIL OF 27 JANUARY 2003 ON THE RESTRICTION OF THE USE OF CERTAIN HAZARDOUS SUBSTANCES IN ELECTRICAL AND ELECTRONIC EQUIPMENT.
  - PART(S) SHIPPED TO ITRONIX SHALL BE PACKAGED FOR SHIPMENT AND/OR STORAGE IN A CLEAN PROTECTIVE CONTAINER PER ITRONIX PACKAGING AND SHIPPING SPEC. TSP-PACK-741. IF A BAG IS USED IT MUST BE NON-STATIC GENERATING.

UNLESS OTHERWISE SPECIFIED, DIMENSIONS IN MILLIMETERS DO NOT SCALE DRAWING

NOTICE OF PROPRIETARY INFORMATION  
INFORMATION CONTAINED HEREIN IS PROPRIETARY AND IS PROPERTY OF GENERAL DYNAMICS ITRONIX WHERE FURNISHED WITH A PROPOSAL. THE RECIPIENT SHALL USE IT SOLELY TO EVALUATE THE PROPOSAL, WHERE FURNISHED TO A CUSTOMER IT SHALL BE USED SOLELY FOR PURPOSES OF INSPECTION INSTALLATION, OR MAINTENANCE. WHERE FURNISHED TO A SUPPLIER, IT SHALL BE USED SOLELY IN THE PERFORMANCE OF THE WORK CONTRACTED FOR BY THIS COMPANY. THE INFORMATION SHALL NOT BE USED OR DISCLOSED BY THE RECIPIENT FOR ANY OTHER PURPOSE WHATSOEVER.

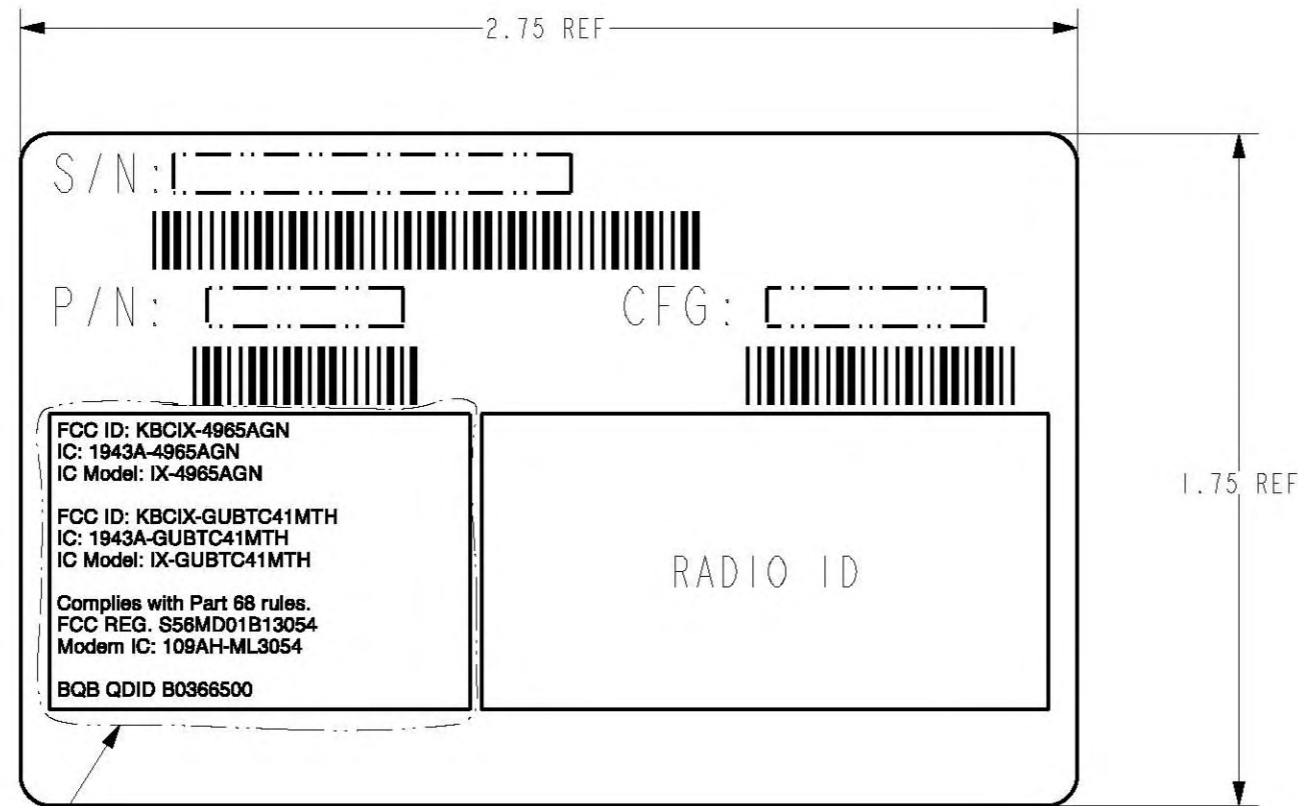
.TOL. EXCEPT AS NOTED  
X ± 0.5 MM  
X.X ± 0.25 MM  
X.XX ± 0.125 MM  
ANG. = 1.0°

THIRD ANGLE PROJECTION

**ITRONIX**  
12825 E MIRABEAU PARKWAY  
SPokane VALLEY, WA 99216-1464

ZONE	REV.	ECO	BY	DESCRIPTION OF CHANGE	APP.	DATE
-	I	TT	KM	PROTOTYPE RELEASE		
DRAFTER	DATE	DESCRIPTION				
K. MORDEN	7-26-07	LBL, IX270, FCC APPD US				
CHECKER	DATE	SIZE	DWG. NO			
J. DERTING	7-26-07	B	26-1043-001R			
ELEC. ENG	DATE	SCALE	SHEET			
MECH. ENG	DATE	2.000	1 OF 1			
MFG. ENG	DATE		REV			
			1			

MODEL	PART NUMBER	OBJECT NAME	REV	VER	REL
	26-1076-001R	LBL-IX350-WLAN-BT	***	***	***
DRAWING	26-1076-001R	26-1076-001R_L1X350-WLAN-BT	-		



NOTES: (UNLESS OTHERWISE SPECIFIED).

- FOR LABEL MANUFACTURE SEE ITRONIX DRAWING 26-0637-000R.
- THIS PART/ASSEMBLY SHALL MEET ROHS COMPLIANCE REQUIREMENTS AS SPECIFIED IN: DIRECTIVE 2002/95/EC OF THE EUROPEAN PARLIAMENT AND OF THE COUNCIL OF 27 JANUARY 2003 ON THE RESTRICTION OF THE USE OF CERTAIN HAZARDOUS SUBSTANCES IN ELECTRICAL AND ELECTRONIC EQUIPMENT.
- PART(S) SHIPPED TO GD-ITRONIX SHALL BE PACKAGED FOR SHIPMENT AND/OR STORAGE IN A CLEAN PROTECTIVE CONTAINER AND BAGGED PROPERLY PER CURRENT GD-ITRONIX PACKAGING AND SHIPPING SPECIFICATION.

SEE DETAIL A

**FCC ID: KBCIX-4965AGN**  
**IC: 1943A-4965AGN**  
**IC Model: IX-4965AGN**

**FCC ID: KBCIX-GUBTC41MTH**  
**IC: 1943A-GUBTC41MTH**  
**IC Model: IX-GUBTC41MTH**

**Complies with Part 68 rules.**  
**FCC REG. S56MD01B13054**  
**Modem IC: 109AH-ML3054**

**BQB QDID 0366500**

DETAIL A  
SCALE 4.000

RADIO CONFIGURATION		- I KM				PROTOTYPE RELEASE	
INTEL 4965AGN		ZONE	REV.	ECO	BY	DESCRIPTION OF CHANGE	
BLUETOOTH		DRAFTER	DATE	DESCRIPTION			
UNLESS OTHERWISE SPECIFIED, DIMENSIONS IN INCHES DO NOT SCALE DRAWING		K. MORDEN	1-18-08	LBL, IX350, WLAN, BT			
NOTICE OF PROPRIETARY INFORMATION INFORMATION CONTAINED HEREIN IS PROPRIETARY AND IS PROPERTY OF GENERAL DYNAMICS ITRONIX WHERE FURNISHED WITH A PROPOSAL. THE RECIPIENT SHALL USE IT SOLELY TO EVALUATE THE PROPOSAL, WHERE FURNISHED TO A CUSTOMER IT SHALL BE USED SOLELY FOR PURPOSES OF INSPECTION INSTALLATION, OR MAINTENANCE. WHERE FURNISHED TO A SUPPLIER, IT SHALL BE USED SOLELY IN THE PERFORMANCE OF THE WORK CONTRACTED FOR BY THIS COMPANY. THE INFORMATION SHALL NOT BE USED OR DISCLOSED BY THE RECIPIENT FOR ANY OTHER PURPOSE WHATSOEVER.		CHECKER	DATE	SIZE	DWG. NO		
.TOL. EXCEPT AS NOTED .XX ± 0.01 INCH .XXX ± 0.005 INCH ANG. = 1.0°		QA/IOC	DATE	B	26-1076-001R		
THIRD ANGLE PROJECTION		ENGINEER	DATE	SCALE	SHEET		
GENERAL DYNAMICS Itronix 12825 E MIRABEAU PARKWAY SPOKANE VALLEY, WA 99216-1464		MFG. ENG	DATE	2.000	1 OF 1		
					REV		
					1		