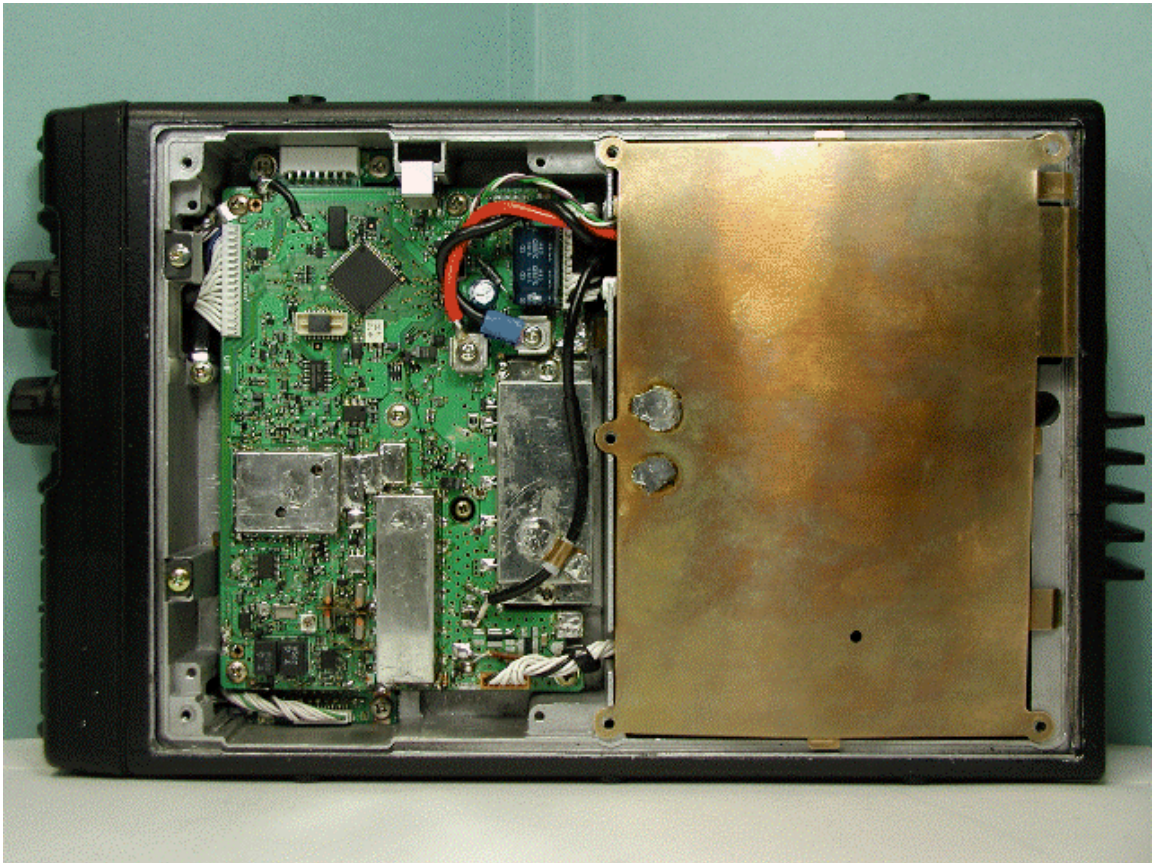
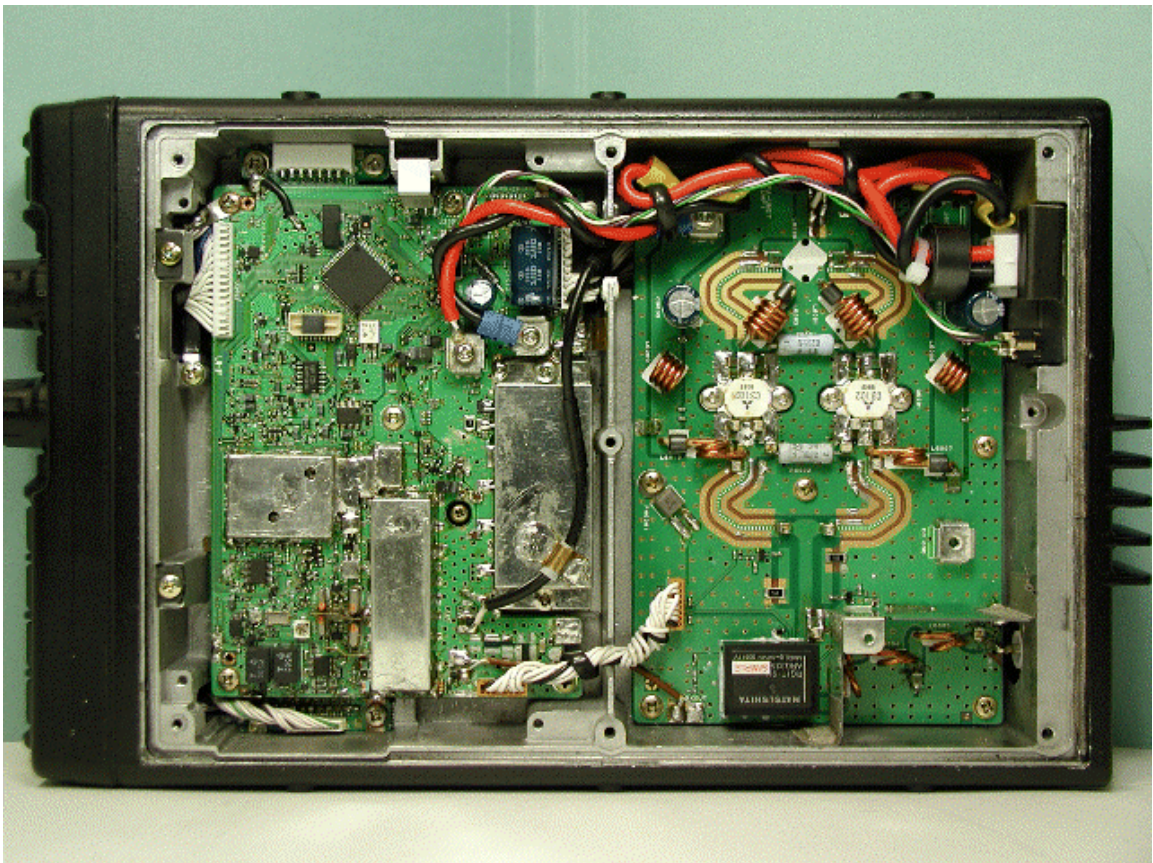


Top of EUT (Cover Opened)

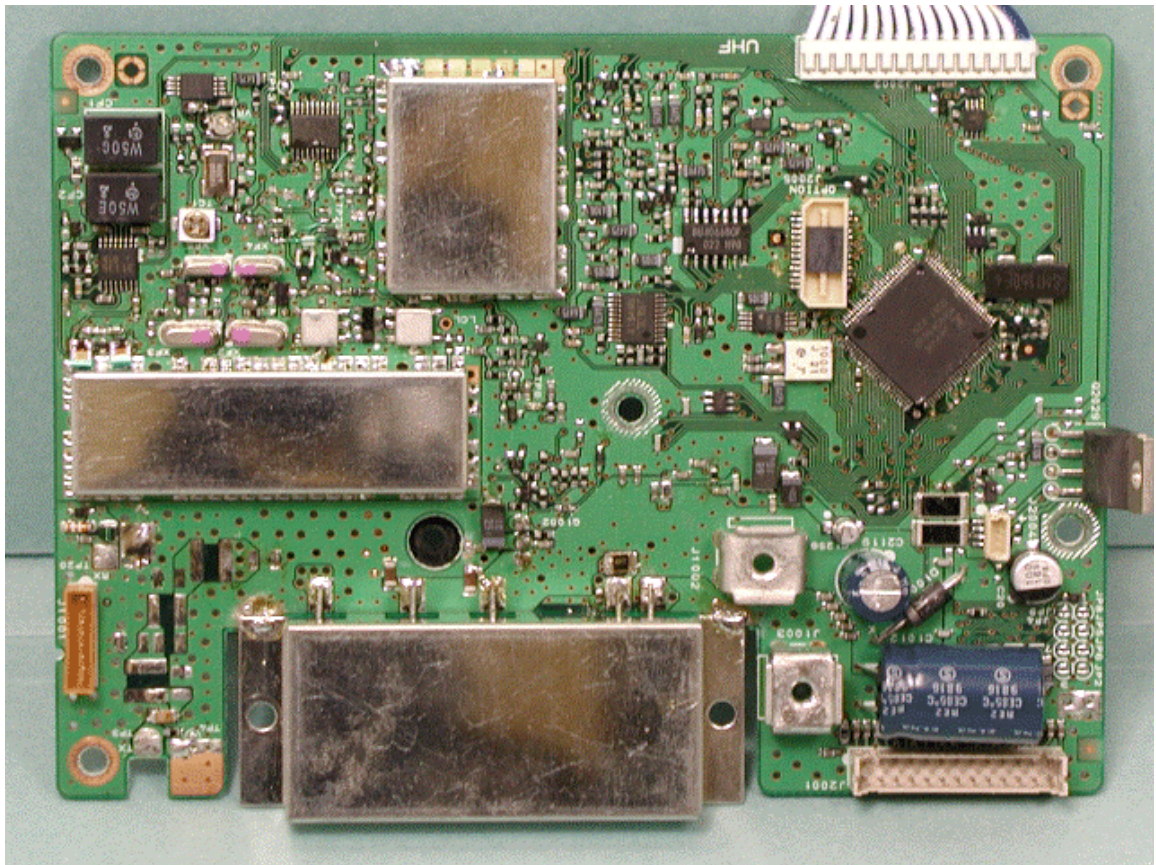


Top of EUT (Cover Opened)

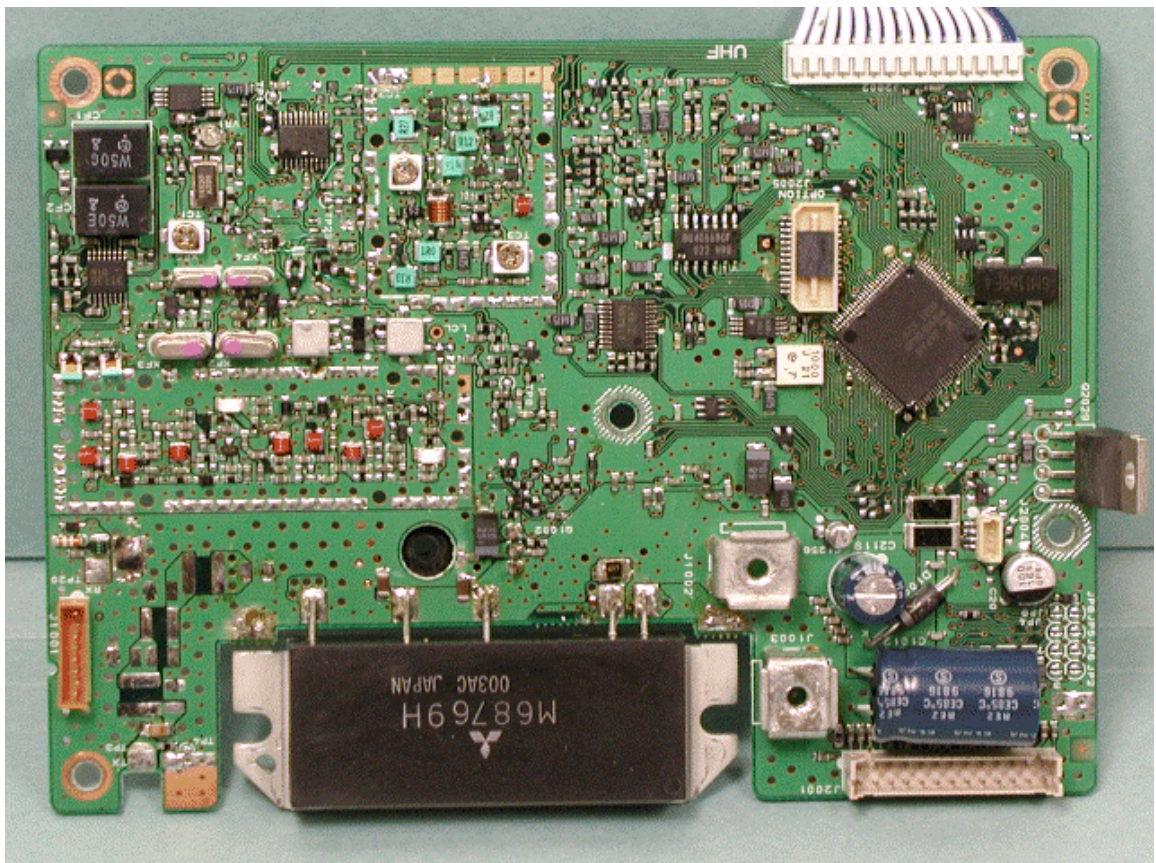




Component Side of MAIN-UNIT

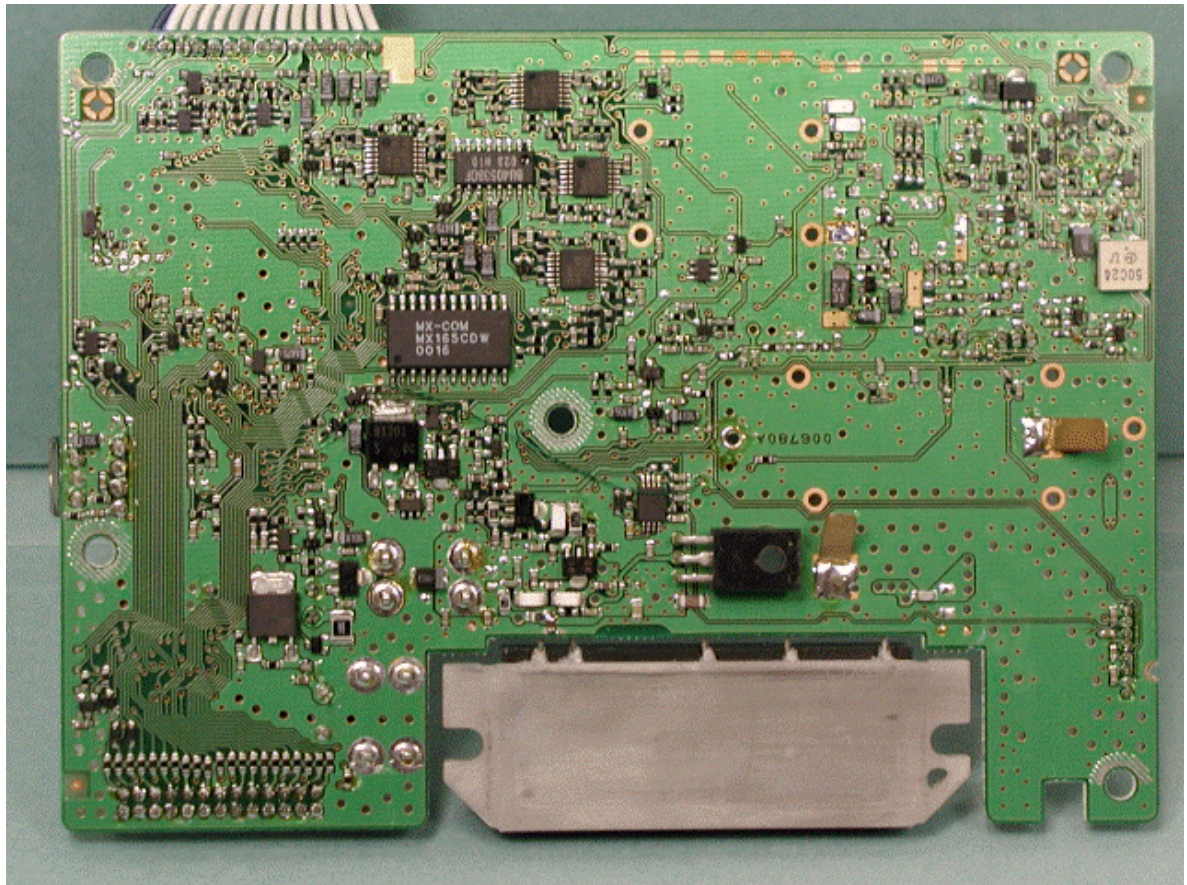


Component Side of MAIN-UNIT without Shield Cases

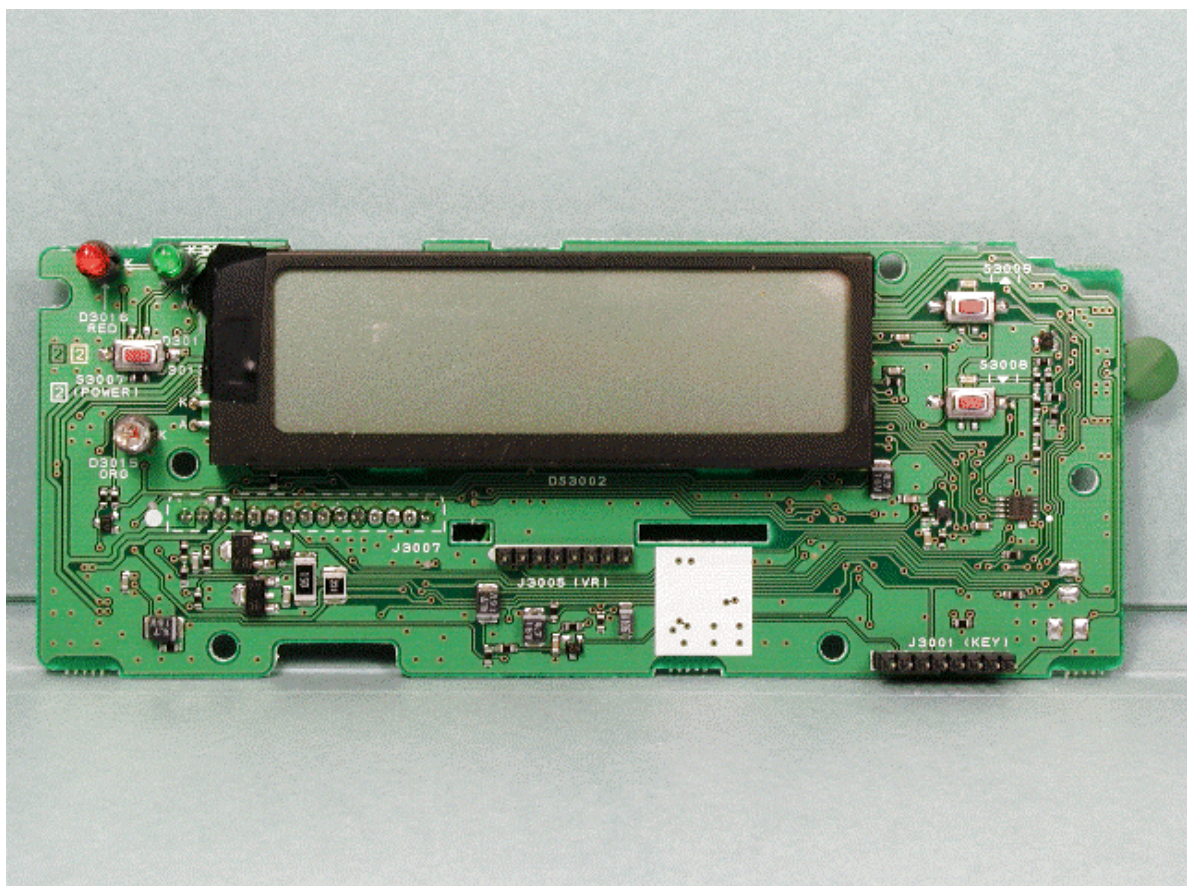




Solder Side of MAIN-UNIT

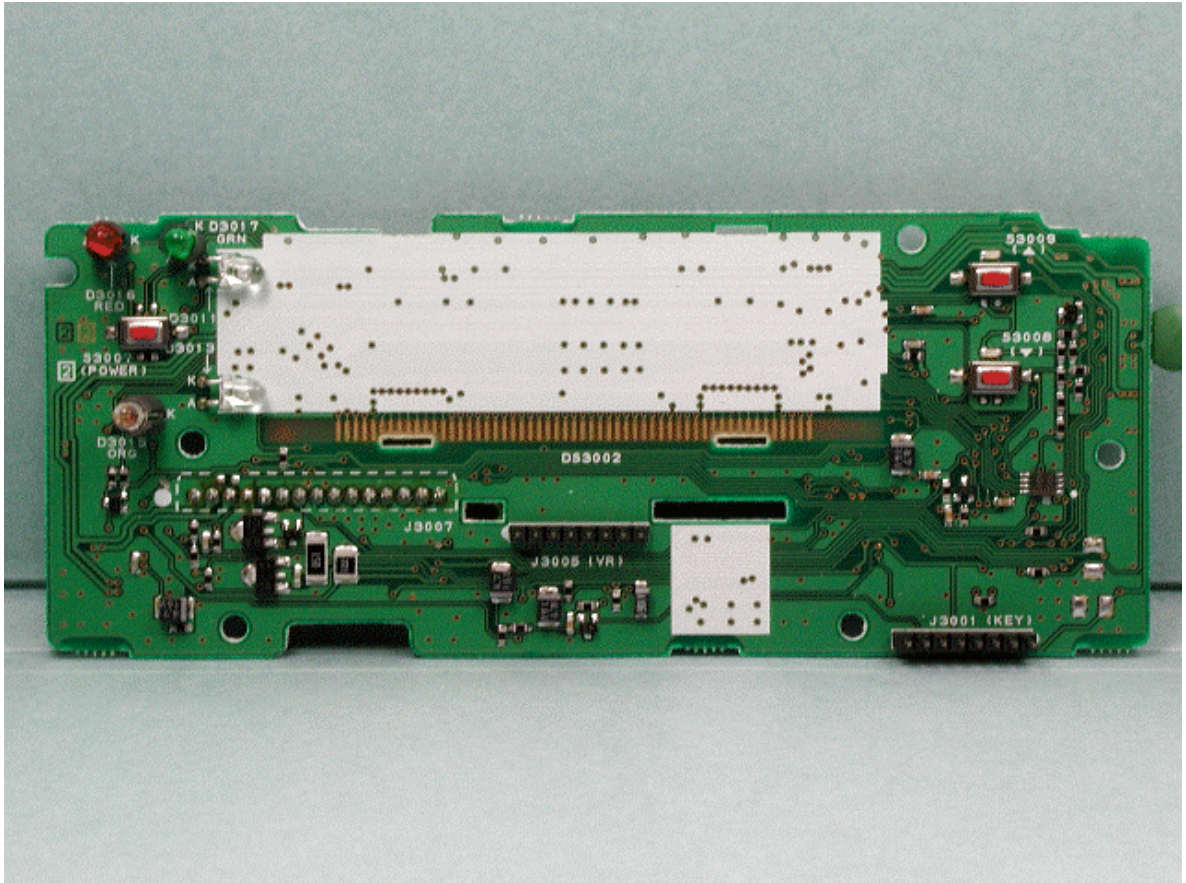


Solder Side of DISPLAY-UNIT

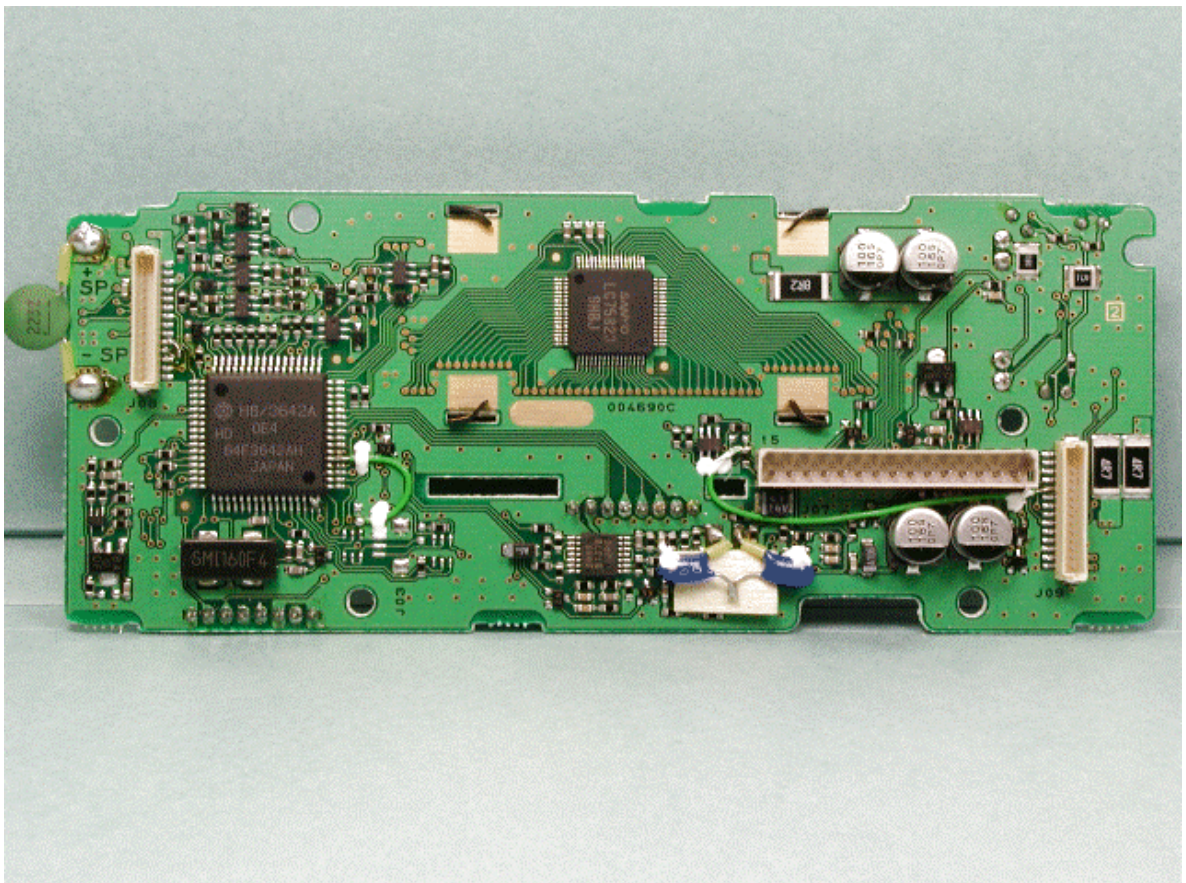




Solder Side of DISPLAY-UNIT without LCD

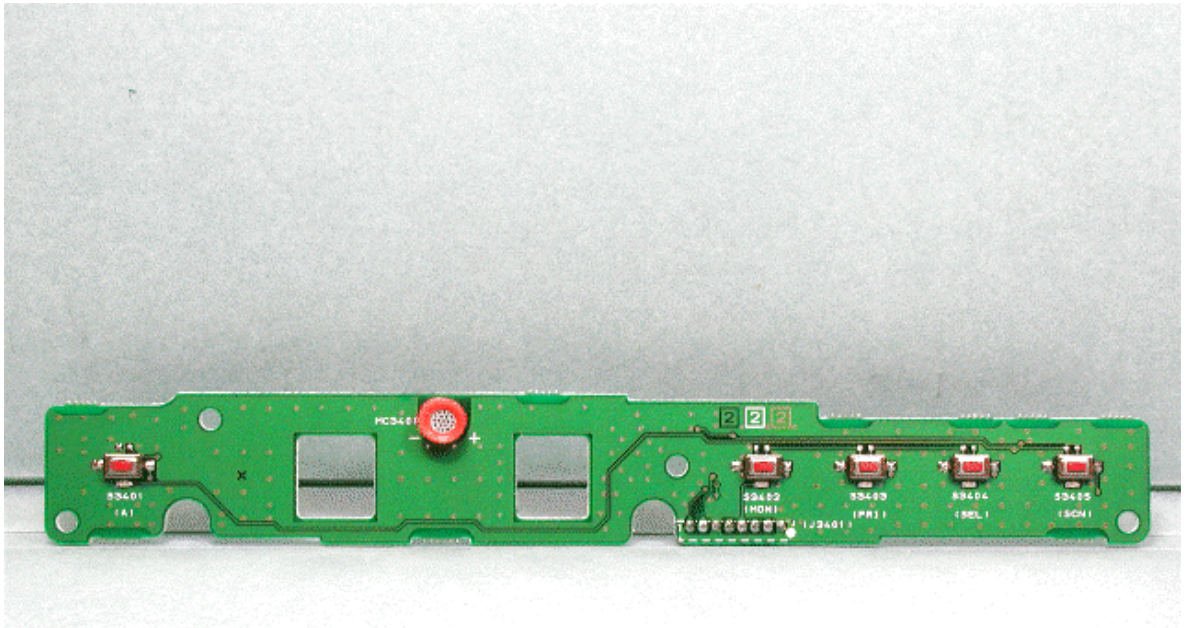


Component Side of DISPLAY-UNIT





Component Side of KEY-UNIT



Solder Side of KEY-UNIT

