

NVIDIA
Geforce2 MX400
Graphics Accelerator

JC9957

User's Guide

JACE TECH INC.

FCC NOTICE

This device complies with part 15 of the FCC Rules. Operation is subject to the following two conditions: (1) This device may not cause harmful interference, and (2) This device must accept any interference received, including interference that may cause undesired operation.

INFORMATION TO THE USER

This equipment has been tested and found to comply with the limits for a Class B digital device, pursuant to Part 15 of FCC Rules. These limits are designed to provide reasonable protection against harmful interference in residential installation. This equipment generates, uses and can radiate radio frequency energy and, if not installed and used in accordance with the instructions, may cause harmful interference to radio communications. However, there is no guarantee that interference will not occur in particular installation. If this equipment does cause interference to radio or television reception, which can be determined by turning the equipment off and on, the user is encouraged to try to correct the interference by one or more of the following measures:

- Reorient or relocate the receiving antenna.
- Increase the separation between the equipment and receiver.
- Connect the equipment into an outlet on a circuit different from that to which the receiver is connected.
- Consult the dealer or an experienced radio/TV technician for help and for additional suggestions.

The user may find the following booklet prepared by Federal Communications Commission helpful: "How to identify and Resolve Radio-TV Interference Problems." This booklet is available from the U.S. Government Printing Office, Washington, DC 20402, Stock No. 004-000-00345-4.

FCC WARNING

The user is cautioned that changes or modifications not expressly approved by the manufacturer could void the user's authority to operate this equipment.

Note: In order for an installation of this product to maintain compliance with the limits for a Class B device, shielded cables must be used.

NOTICE

The information in this document is subject to change in order to improve reliability, design, or function without prior notice and does not represent a commitment on the part of this company. In no event will we be liable for direct, indirect, special, incidental, or consequential damages arising out of the use or the inability to use the product or documentation, even if advised of the possibility of such damages. No part of this reference manual may be reproduced or transmitted in any form or by any means without the prior written permission of this company.

TRADEMARK ACKNOWLEDGMENTS

Microsoft®, Microsoft Word, and Microsoft Windows® are registered trademarks of Microsoft Corp. Multiscan is a trademark of Sony Corporation of America. MultiSync is a trademark of NEC Home Electronics (USA) Inc. Geforce2 MX400 is registered trademarks of NVIDIA Corporation. All other product names or trademarks are property of their respective owners.

Table of Content

Introduction.....	1
1.1 Features	1
1.2 Board Configuration.....	1
Installing Drivers for Windows 98	2

Introduction

1.1 Features

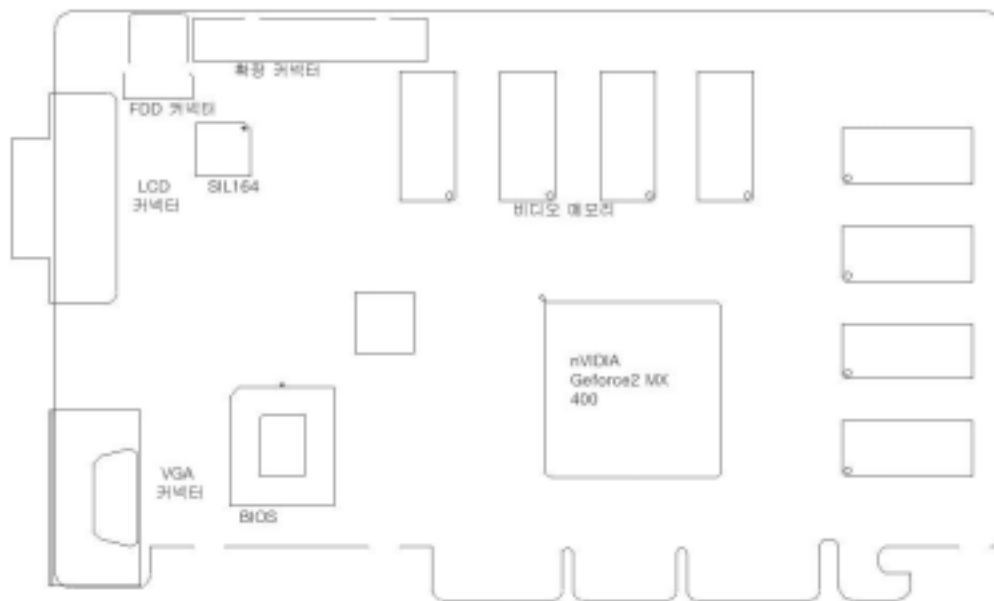
This manual provides operating instructions for user utilities and installation instructions for the display drivers supplied.

This graphics system is VGA compatible. The utilities and drivers supplied with your vga card provide support for additional features, such as greater speed, higher resolution, and more available colors.

- Supports AGP 2X/4X mode
- Built-in a high performance H/W 3D setup engine
- Supports 4MX16 DDR SDRAM types up to 166 MHz
- Built-in programmable 24-bit true-color RAMDAC up to 350MHz pixel clock
- Supports super high resolution graphics modes
 - 640x480 256/32K/64K/16M colors at 85Hz NI
 - 800x600 16/256/32K/64K/16M colors at 85Hz NI
 - 1024x768 16/256/32K/64K/16M colors at 85Hz NI
 - 1280x1024 16/256/32K/64K/16M colors at 85 Hz NI
 - 1600x1200 16/256/32K/64K/16M colors at 85 Hz NI
- Supports VESA Display Power Management Signaling (DPMS) compliant VGA monitor for power management
- Supports DDC1 and DDC2B specifications

1.2 Board Configuration

JC9957

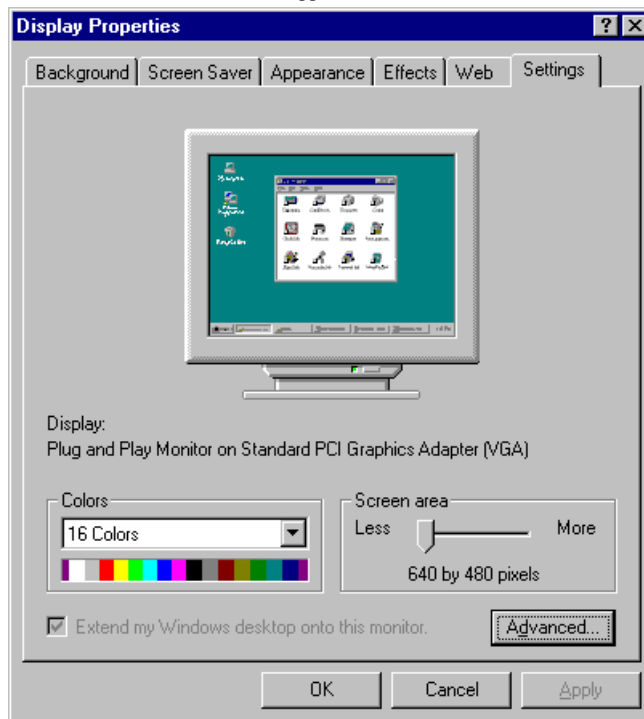


Installing Drivers for Windows 98

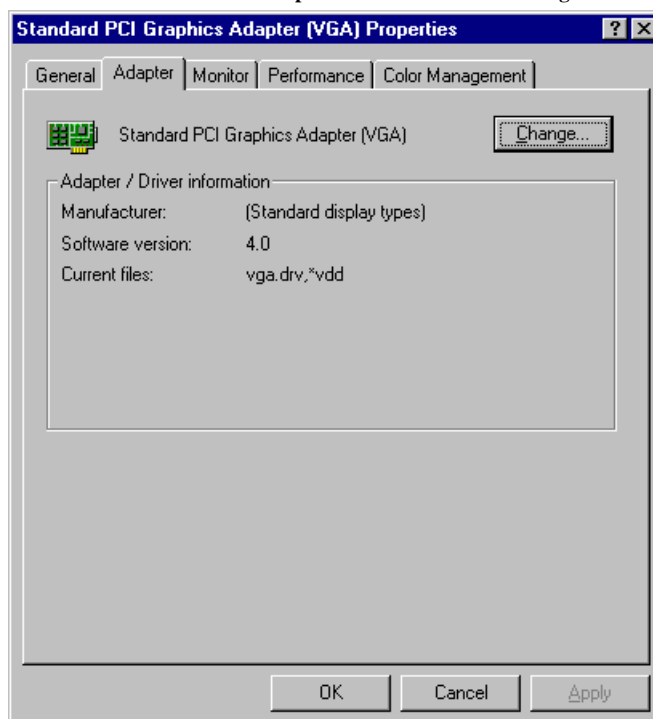
1. After Windows has loaded, select **Settings** on the **Start** menu.
2. Select **Control Panel** on the **Settings** menu and click on the **Display** icon.



3. The **Display Properties** window appears. Select the **Settings** tab and click on the **Advanced** button.



4. From the next window select **Adapter** tab and click on the **Change** button.



5. **Update Device Driver Wizard** window appears. Click on the **Next** button to continue the installation.

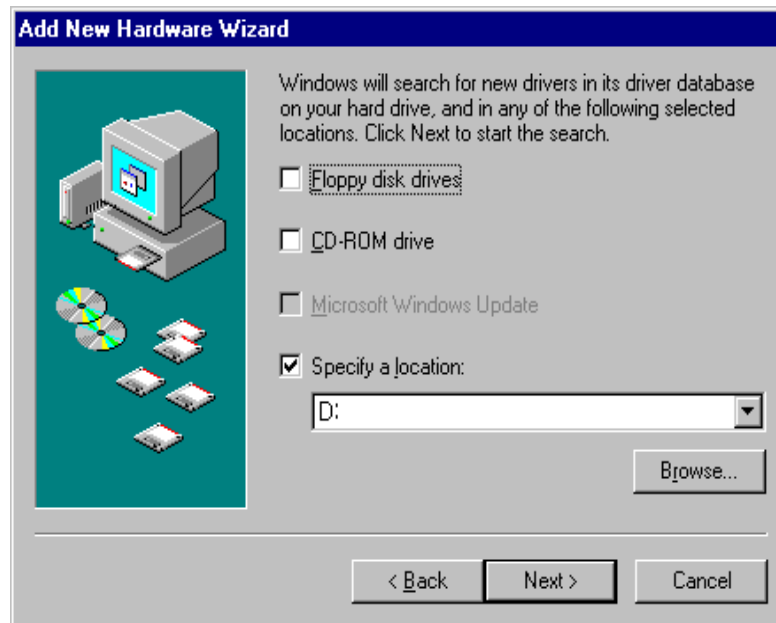


6. Select **Search for a better driver than the one your device is using now** and click on the **Next** button.



Installing Drivers

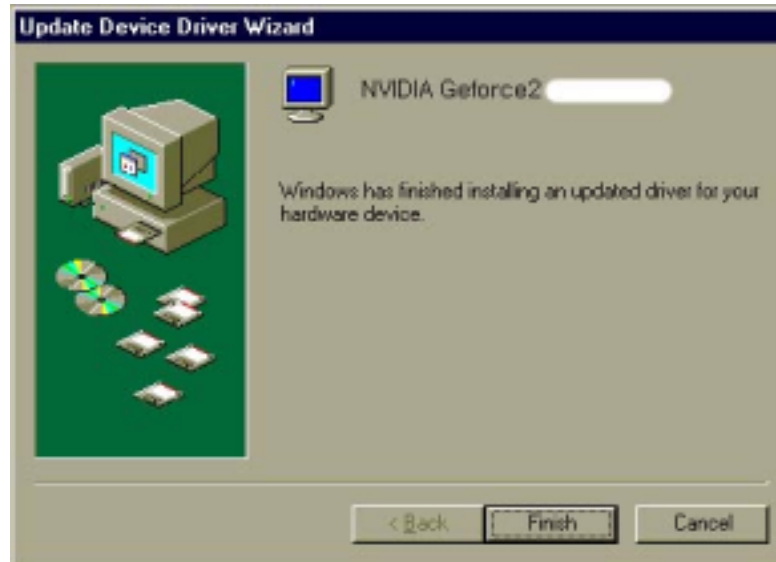
7. In the **Specify a location:** box, enter the location of the Vanta graphics accelerator drivers and click on the **Next** button. (D: is the CD-ROM drive including driver files.)



8. When the refreshed window appears. Click on the **Next** button.



9. Click on the **Finish** button to continue the installation.



10. To finish setting up your new hardware, you must restart your computer. When System Settings Change window appears, click on the **Yes** button.

