

4.0 EXTERNAL PHOTOS

This section should include clear, focused pictures of the overall appearance showing all user accessible controls and connectors. The rule sections, which require these photos to be submitted, are 2.975(a)(5), 2.983(g) and 2.1033(b)(7).



Figure 3. OTX02-250 Broadband Transmitter.



Figure 4. OTX02-250 Bottom View.

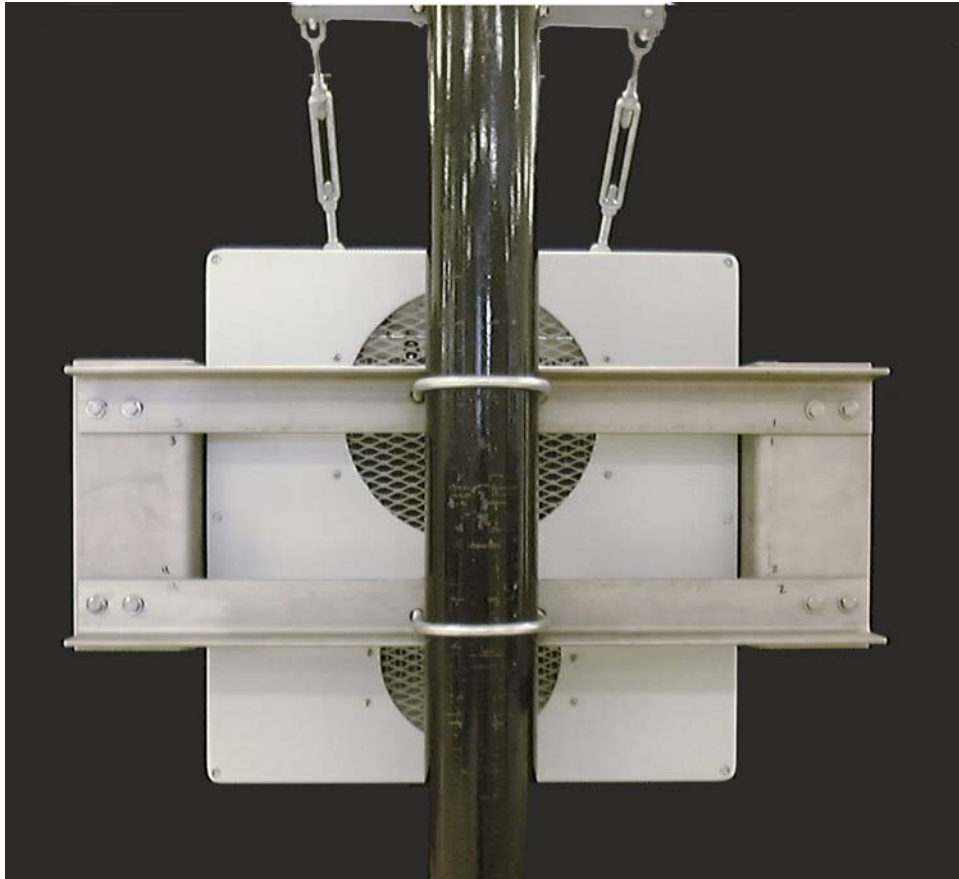


Figure 5. Rear Mounting View.