

## Antenna Location:

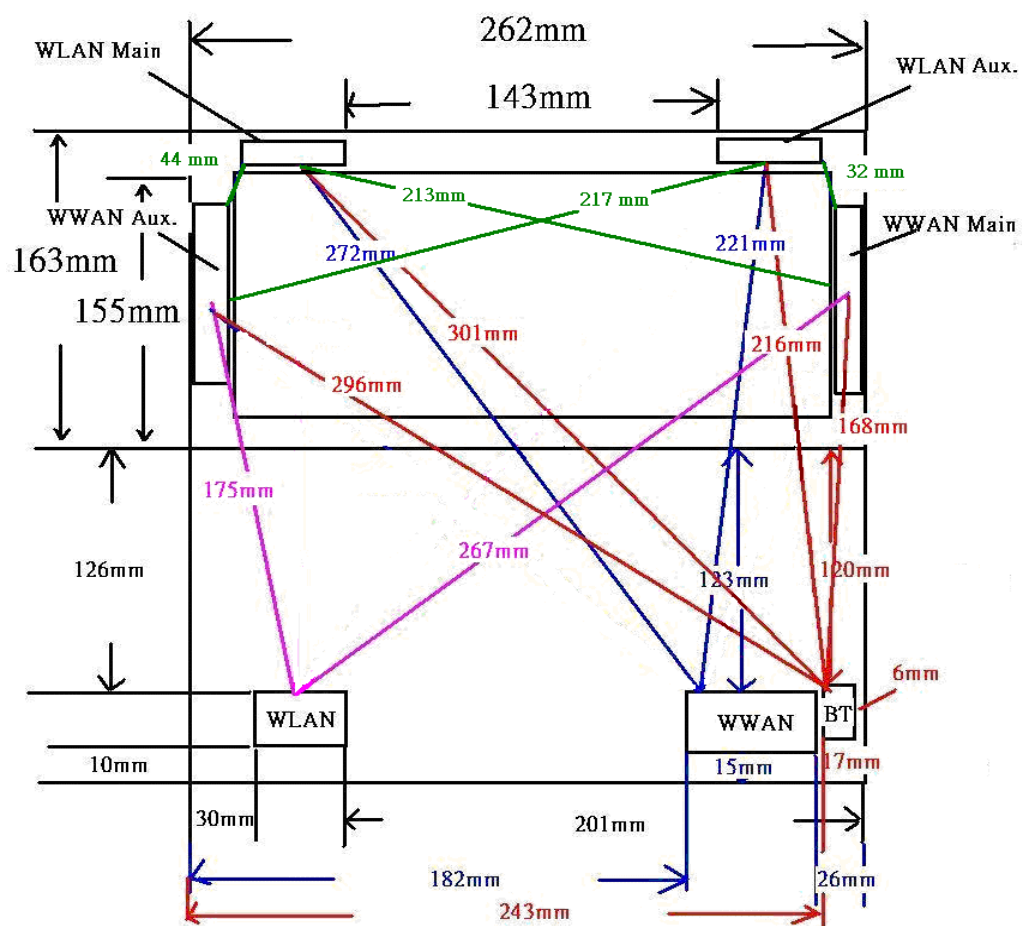
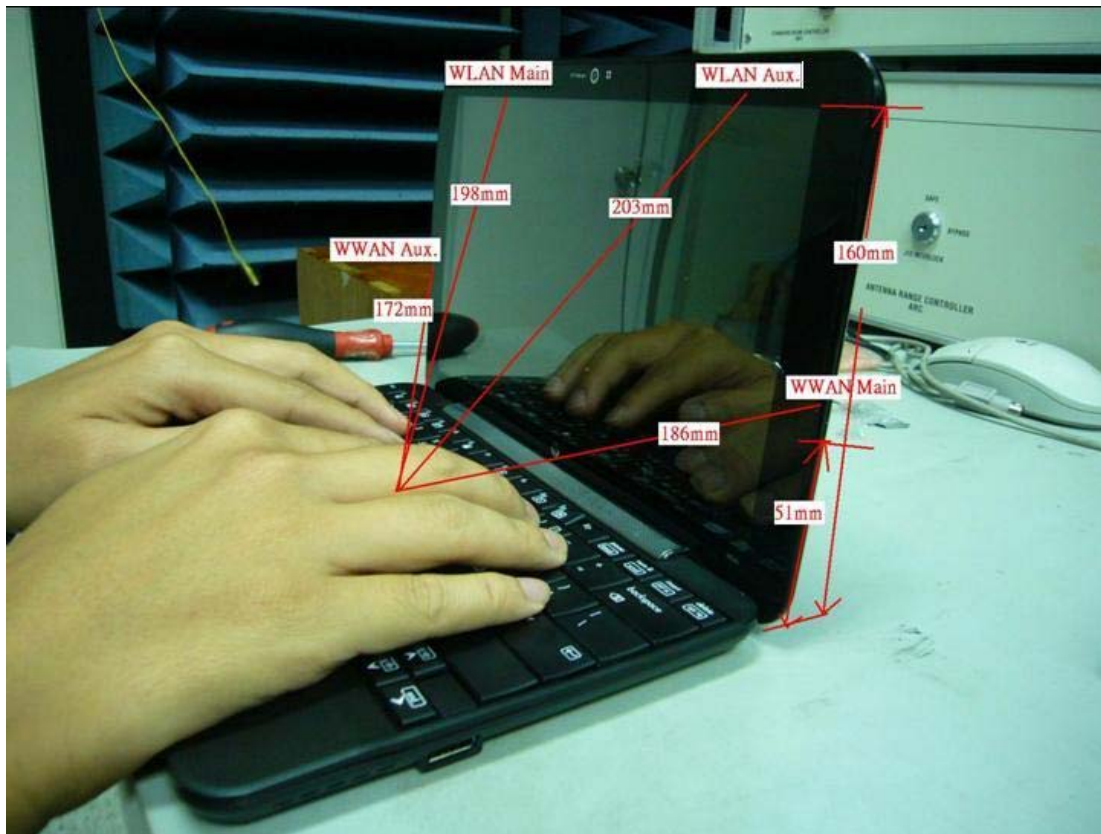
8.9 inch screen:



10.2 inch screen



## Antenna distance:





### GSM band Body position:



### Body position



### Body position

Depth of liquid: 15.0 cm  
Depth of liquid: 15.0 cm

EUT Position	Antenna	Frequency		Liquid Temp_°C	SAR (1g) (W/kg)	Limit (W/kg)
		Channel	MHz			
Body	Fixed	190	836.6	23.3	0.037 <sup>(3)</sup>	1.6
	Fixed	190	836.6	23.3	0.036 <sup>(4)</sup>	
	Fixed	661	1880.0	23.6	0.082 <sup>(3)</sup>	
	Fixed	661	1880.0	23.6	0.058 <sup>(4)</sup>	

Depth of liquid: 15.0 cm
Depth of liquid: 15.0 cm

EUT Position	Antenna	Frequency		Liquid Temp_°C	SAR (1g) (W/kg)	Limit (W/kg)
		Channel	MHz			
Body	Fixed	190	836.6	23.3	0.065 <sup>(3)</sup>	1.6
	Fixed	190	836.6	23.3	0.063 <sup>(4)</sup>	
	Fixed	661	1880.0	23.6	0.140 <sup>(3)</sup>	
	Fixed	661	1880.0	23.6	0.121 <sup>(4)</sup>	

Depth of liquid: 15.0 cm  
Depth of liquid: 15.0 cm

EUT Position	Antenna	Frequency		Liquid Temp_°C	SAR (1g) (W/kg)	Limit (W/kg)
		Channel	MHz			
Body	Fixed	190	836.6	23.3	0.025 <sup>(3)</sup>	1.6
	Fixed	190	836.6	23.3	0.020 <sup>(4)</sup>	
	Fixed	661	1880.0	23.6	0.063 <sup>(3)</sup>	
	Fixed	661	1880.0	23.6	0.050 <sup>(4)</sup>	

Notes: 1) Please refer to attachment for the result presentation in plot format.

2) The SAR measured at the middle channel for this configuration at least 3 dB lower (0.8mW/g) than SAR limit (1.6mW/g), thus testing at low and high channel is optional.

3) Using 10.2 inch screen EUT test.

4) Using 8.9 inch screen EUT test.

**WCDMA band Body position:**



### Body position



### Body position

Test mode: **WCDMA band II**, Duty Cycle: 100%, Crest Factor: 1  
Test mode: **WCDMA band V**, Duty Cycle: 100%, Crest Factor: 1

Depth of liquid: 15.0 cm  
Depth of liquid: 15.0 cm

EUT Position	Antenna	Frequency		Liquid Temp_°C	SAR (1g) (W/kg)	Limit (W/kg)
		Channel	MHz			
Body	Fixed	9400	1880.0	23.3	0.169 <sup>(3)</sup>	1.6
	Fixed	9400	1880.0	23.3	0.149 <sup>(4)</sup>	
	Fixed	4182	836.4	23.6	0.062 <sup>(3)</sup>	
	Fixed	4182	836.4	23.6	0.051 <sup>(4)</sup>	

Test mode: **HSDPA band II**, Duty Cycle: 100%, Crest Factor: 1

Depth of liquid: 15.0 cm

Test mode: **HSDPA A band V**, Duty Cycle: 100%, Crest Factor: 1

Depth of liquid: 15.0 cm

EUT Position	Antenna	Frequency		Liquid Temp_°C	SAR (1g) (W/kg)	Limit (W/kg)
		Channel	MHz			
Body	Fixed	9400	1880.0	23.3	0.136 <sup>(3)</sup>	1.6
	Fixed	9400	1880.0	23.3	0.097 <sup>(4)</sup>	
	Fixed	4182	836.4	23.6	0.055 <sup>(3)</sup>	
	Fixed	4182	836.4	23.6	0.042 <sup>(4)</sup>	

Test mode: **HSUPA A band II**, Duty Cycle: 100%, Crest Factor: 1

Depth of liquid: 15.0 cm

Test mode: **HSUPA A band V**, Duty Cycle: 100%, Crest Factor: 1

Depth of liquid: 15.0 cm

EUT Position	Antenna	Frequency		Liquid Temp_°C	SAR (1g) (W/kg)	Limit (W/kg)
		Channel	MHz			
Body	Fixed	9400	1880.0	23.3	0.138 <sup>(3)</sup>	1.6
	Fixed	9400	1880.0	23.3	0.134 <sup>(4)</sup>	
	Fixed	4182	836.4	23.6	0.061 <sup>(3)</sup>	
	Fixed	4182	836.4	23.6	0.055 <sup>(4)</sup>	

Notes: 1) Please refer to attachment for the result presentation in plot format.

2) The SAR measured at the middle channel for this configuration at least 3 dB lower (0.8mW/g) than SAR limit (1.6mW/g), thus testing at low and high channel is optional.

3) Using 10.2 inch screen EUT test.

4) Using 8.9 inch screen EUT test.

Test mode: <b>CDMA Cellular</b> , Duty Cycle: 100%, Crest Factor: 1	Depth of liquid: 15.0 cm
Test mode: <b>CDMA PCS</b> , Duty Cycle: 100%, Crest Factor: 1	Depth of liquid: 15.0 cm

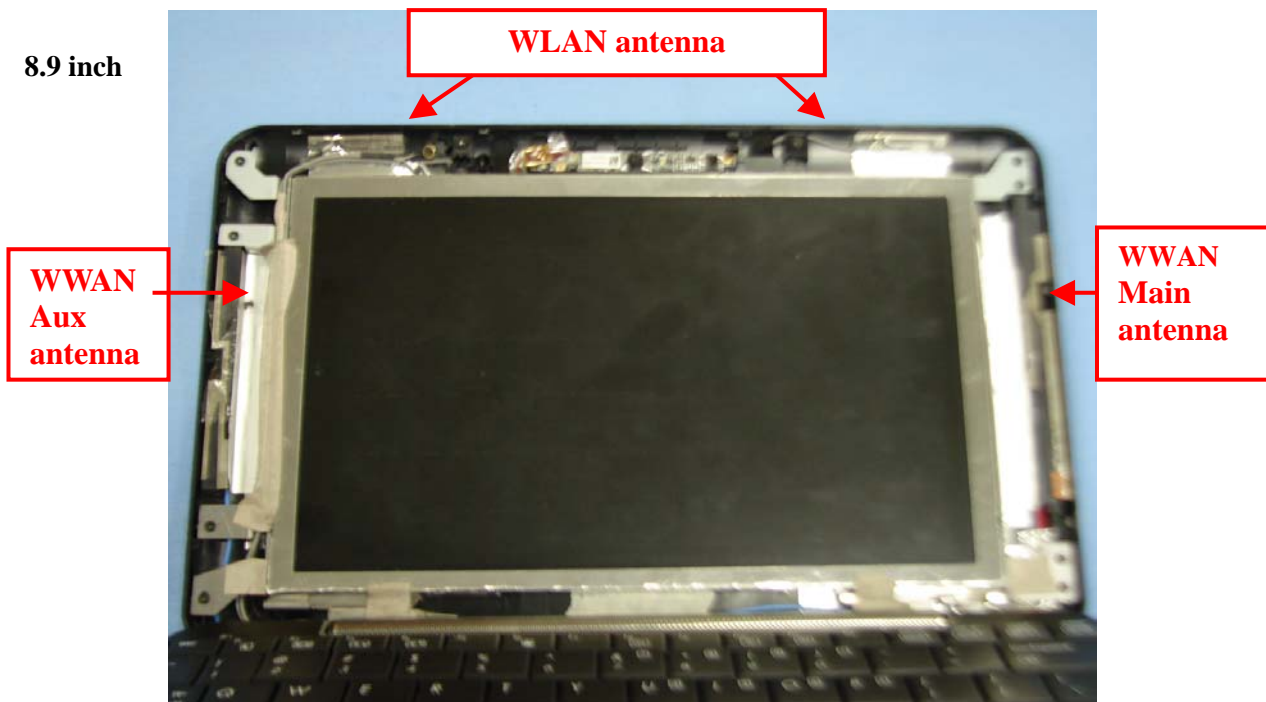
Test mode: <b>EVDO Cellular</b> , Duty Cycle: 100%, Crest Factor: 1	Depth of liquid: 15.0 cm
Test mode: <b>EVDO PCS</b> , Duty Cycle: 100%, Crest Factor: 1	Depth of liquid: 15.0 cm

<p>Notes: 1) Please refer to attachment for the result presentation in plot format.</p> <p>2) The SAR measured at the middle channel for this configuration at least 3 dB lower (0.8mW/g) than SAR limit (1.6mW/g), thus testing at low and high channel is optional.</p> <p>3) Using 10.2 inch screen EUT test.</p> <p>4) Using 8.9 inch screen EUT test.</p>
--

## 1. EUT PHOTOS



8.9 inch



10.2 inch

WLAN antenna

WWAN  
Aux  
antenna

WWAN  
Main  
antenn

