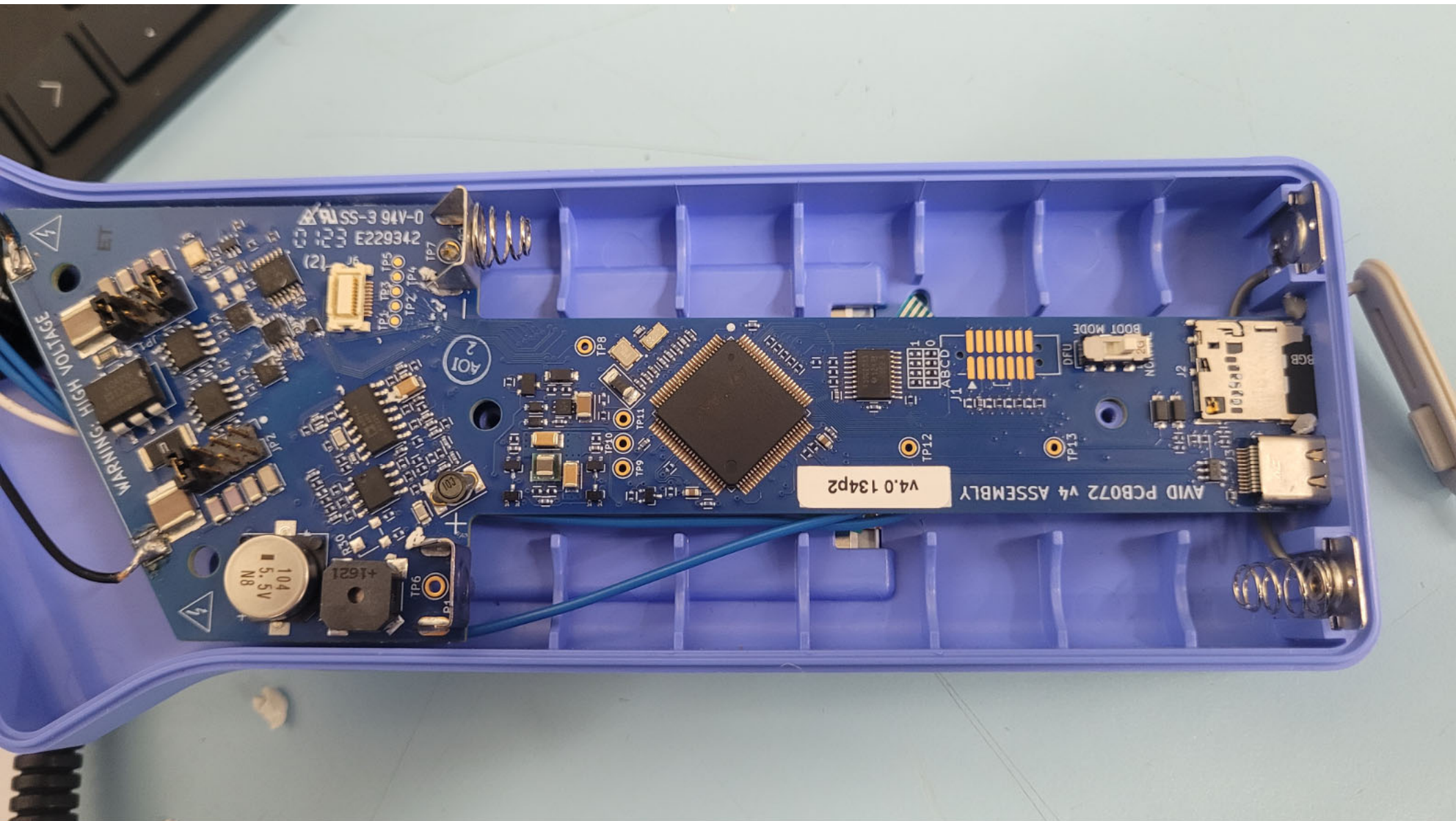


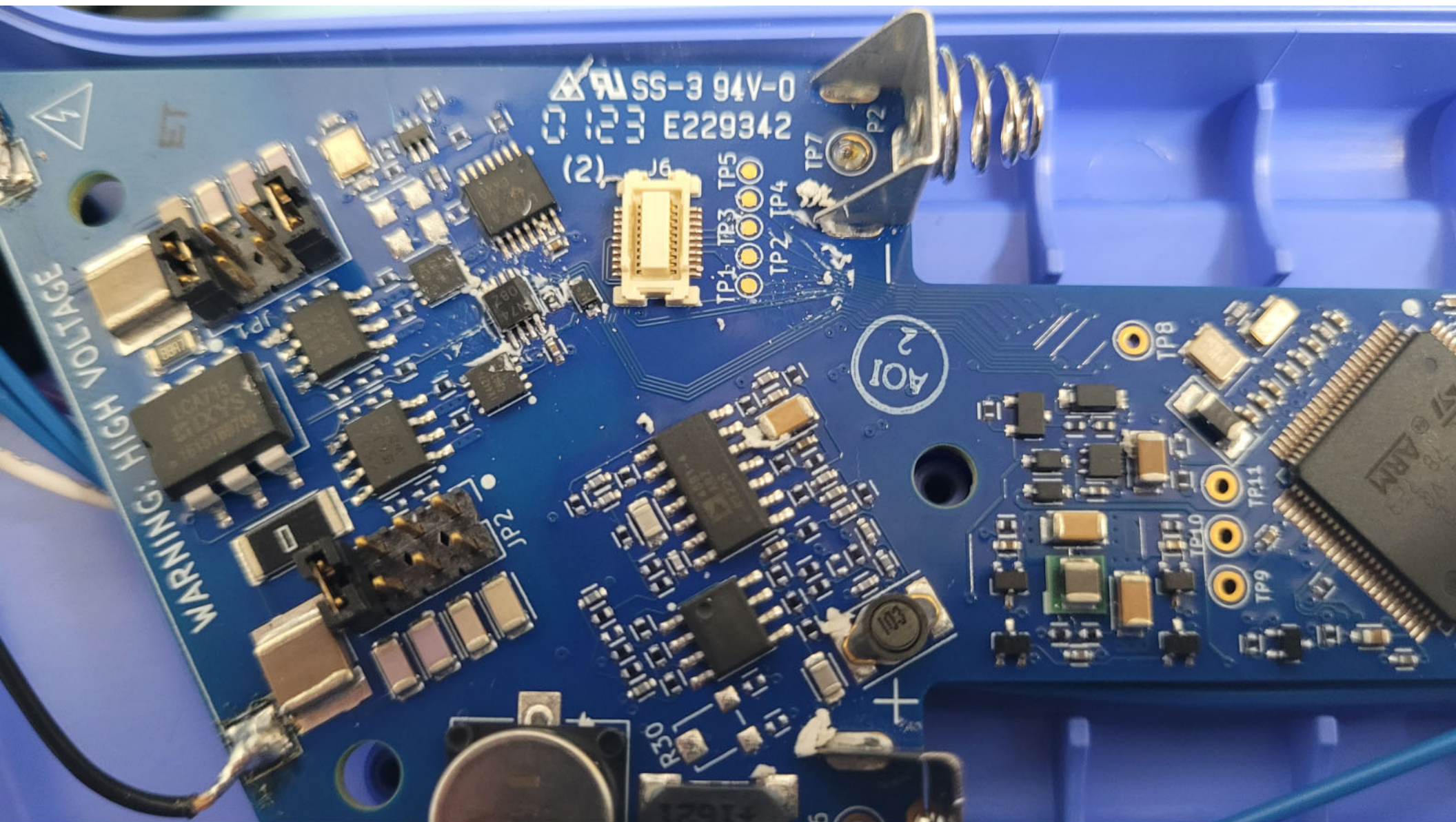
Top View of the PCB - Closeup #2





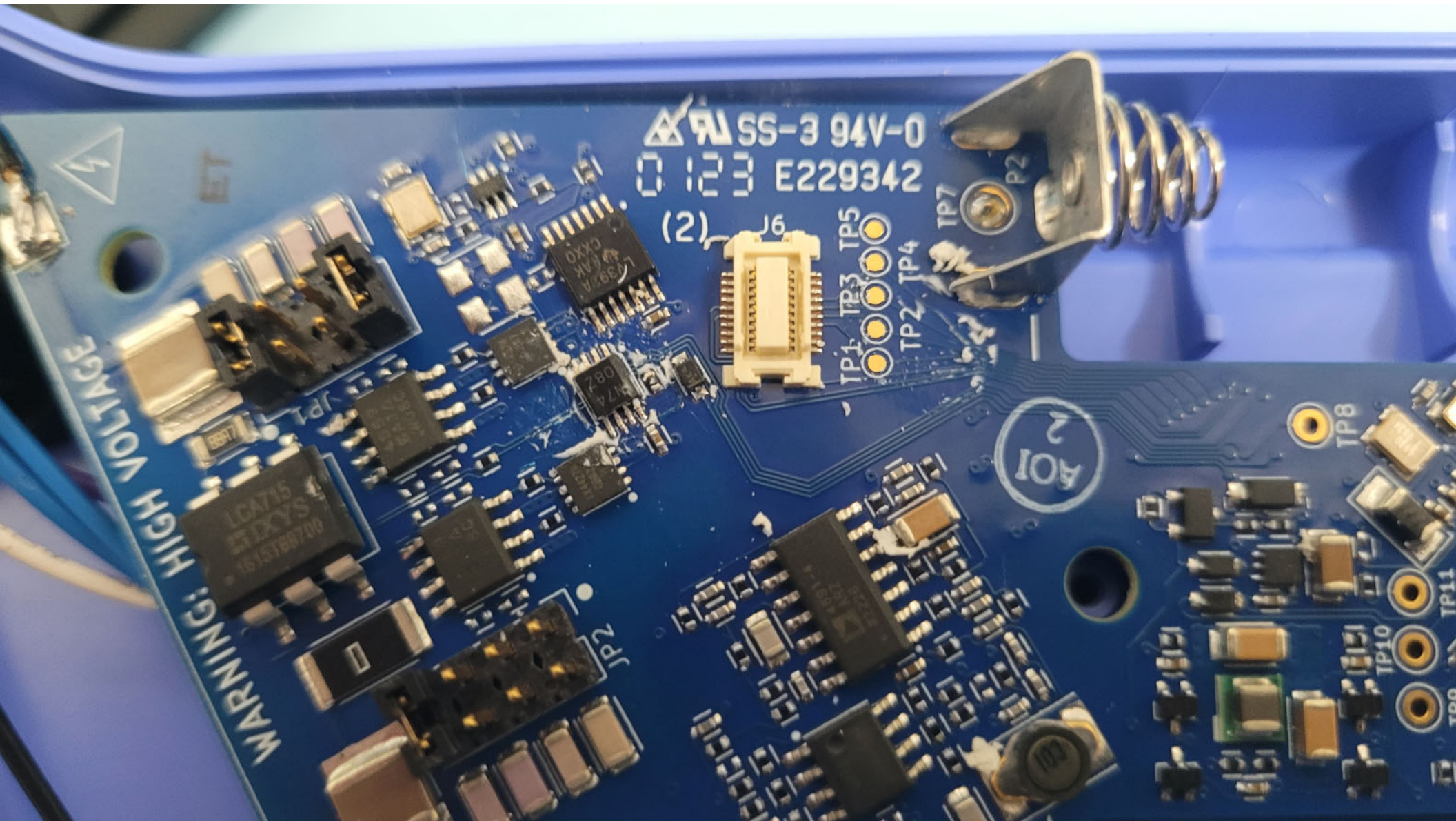
Top View of the PCB - RF Module Removed





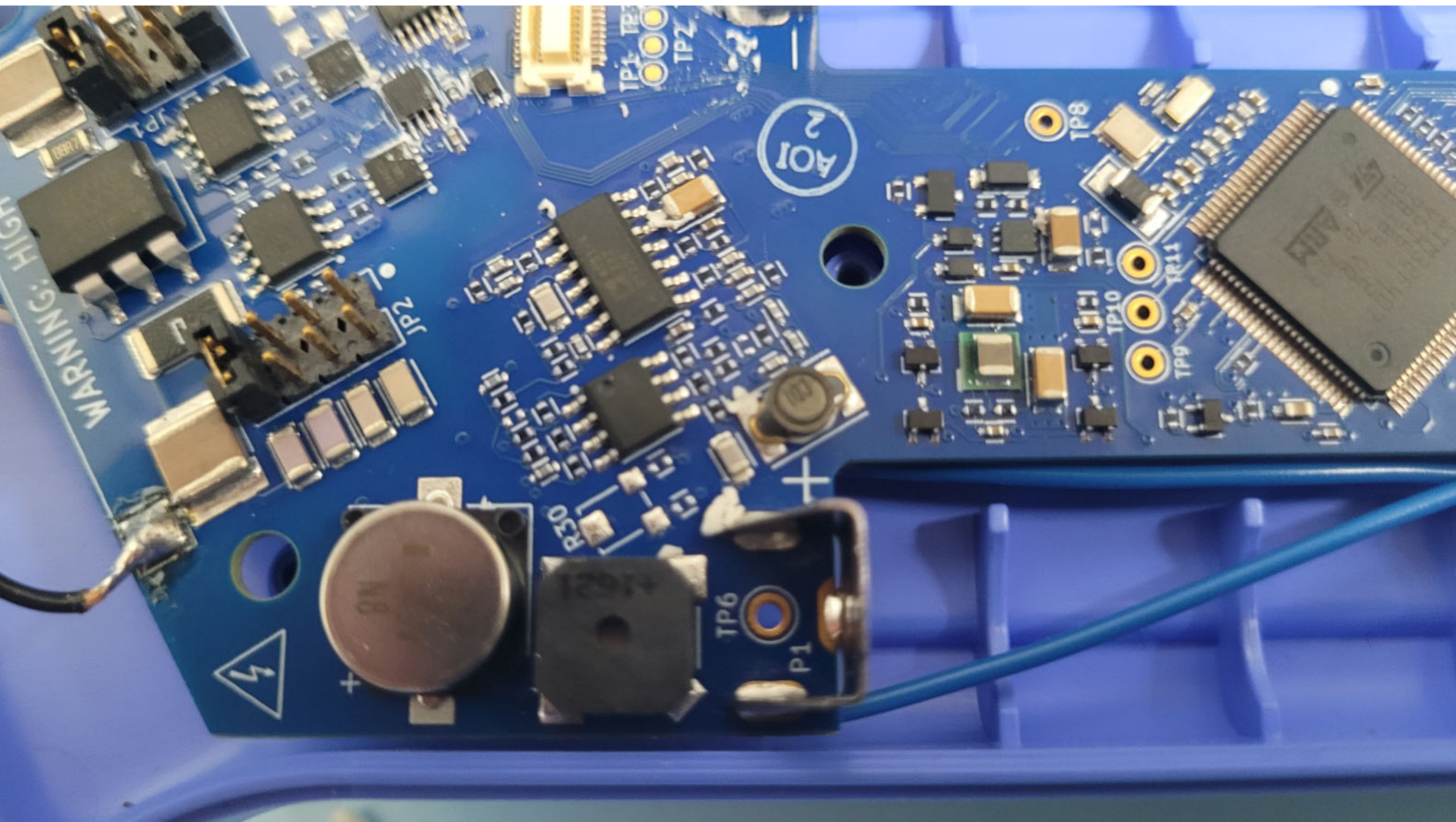
Top View of the PCB - Closeup #1 - with RF Module Removed



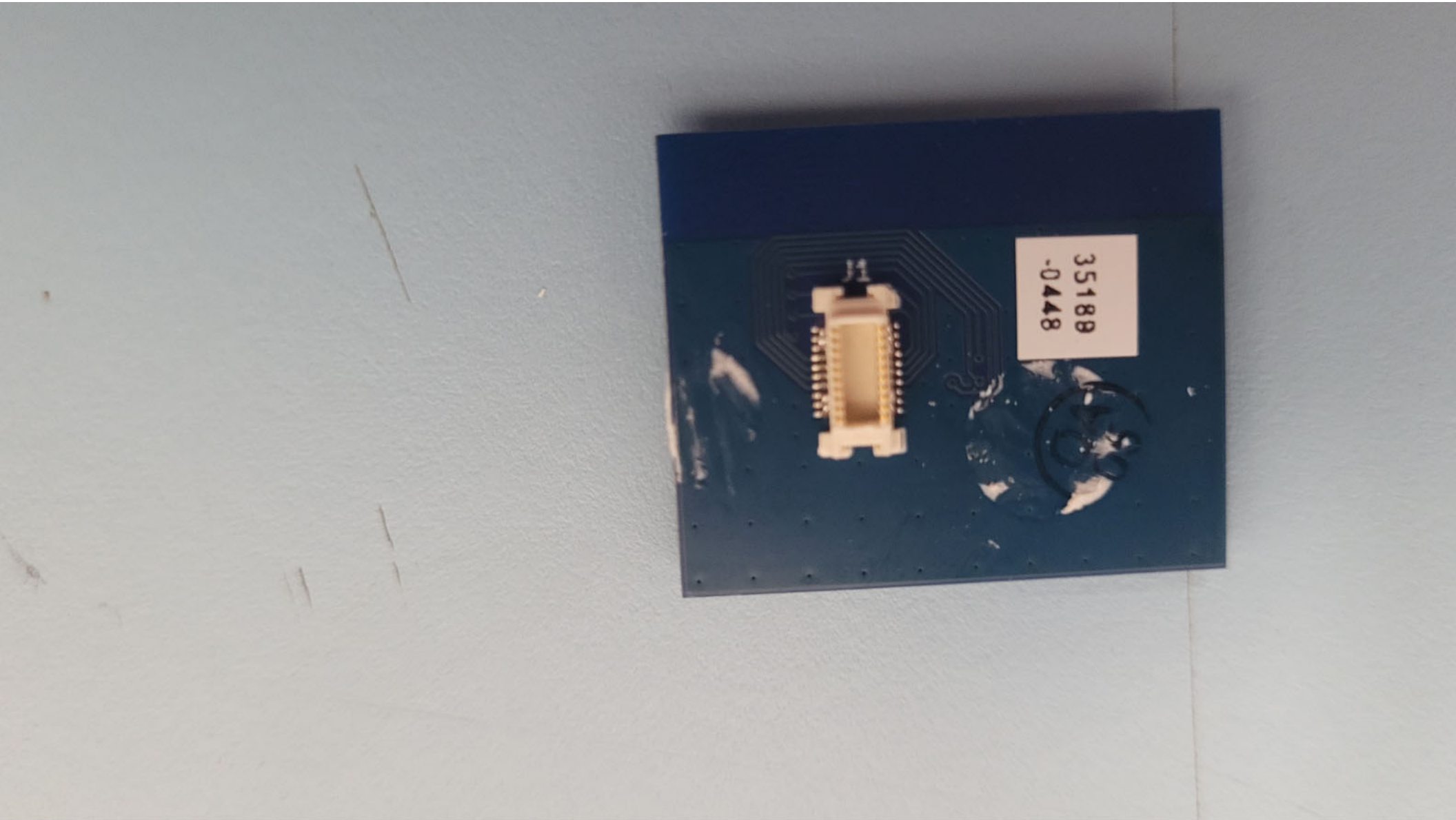


Top View of the PCB - Closeup #2 - with RF Module Removed



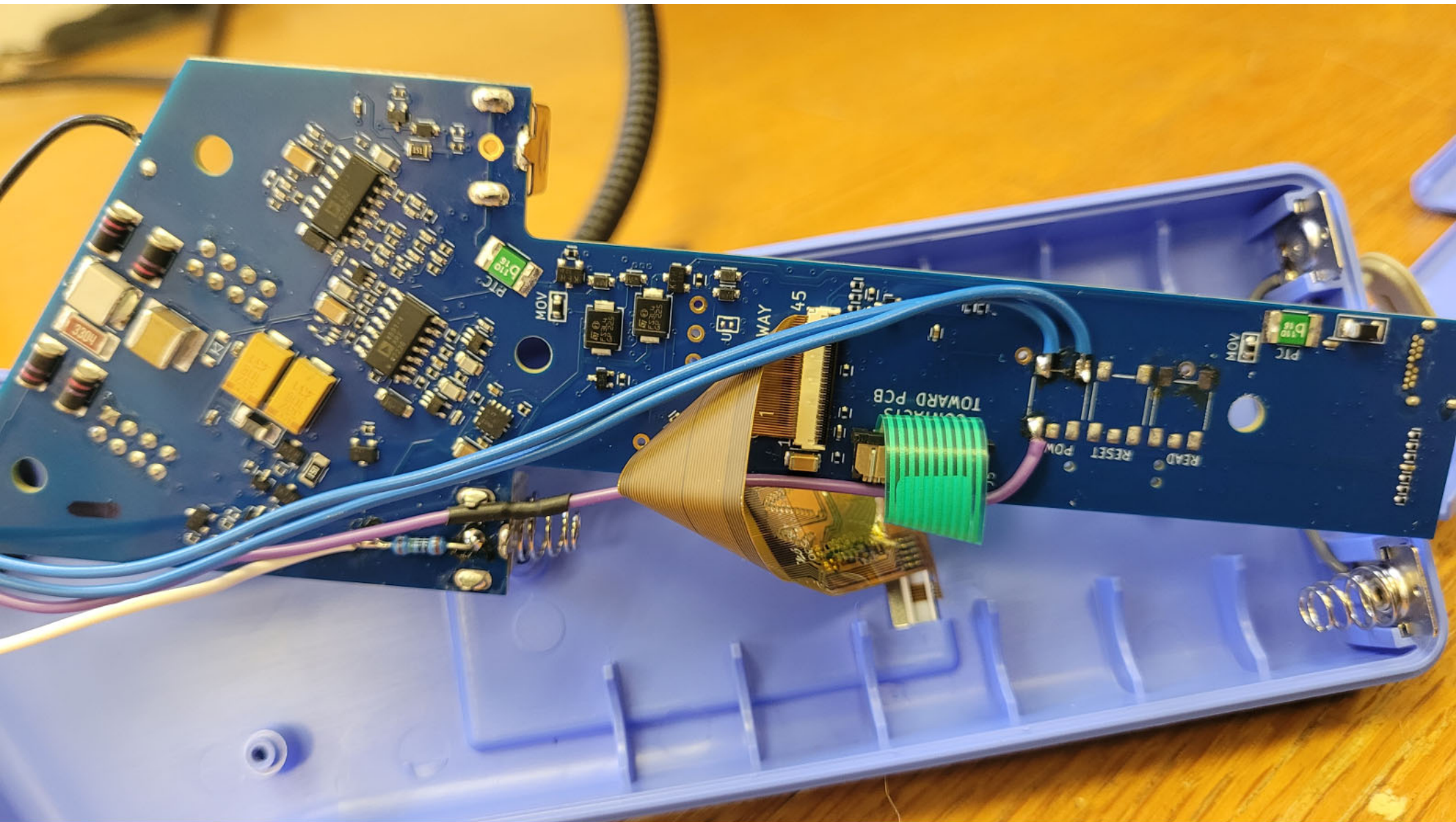


Top View of the PCB - Closeup #3 - with RF Module Removed



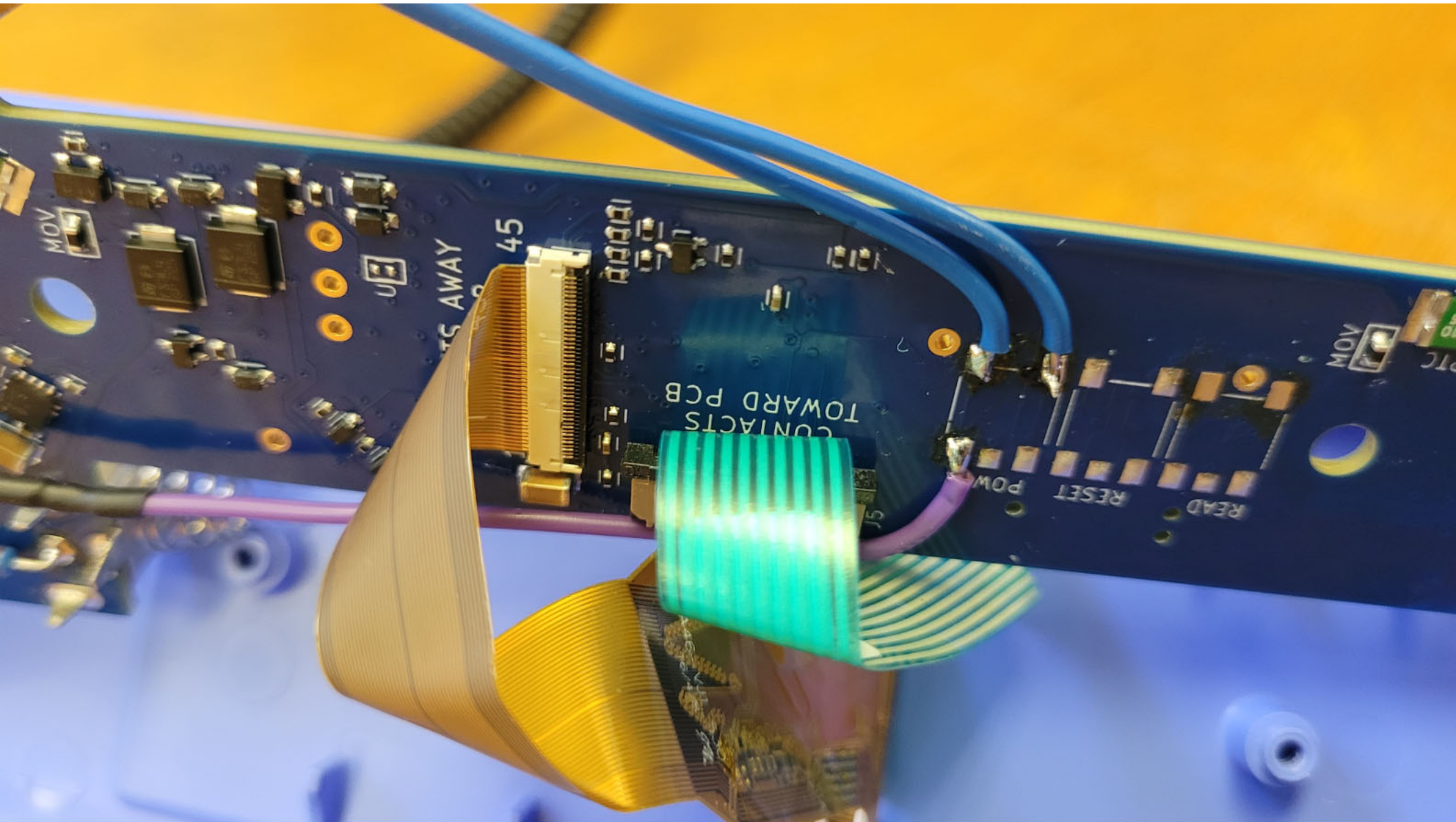
**Bottom View of the RF Module**





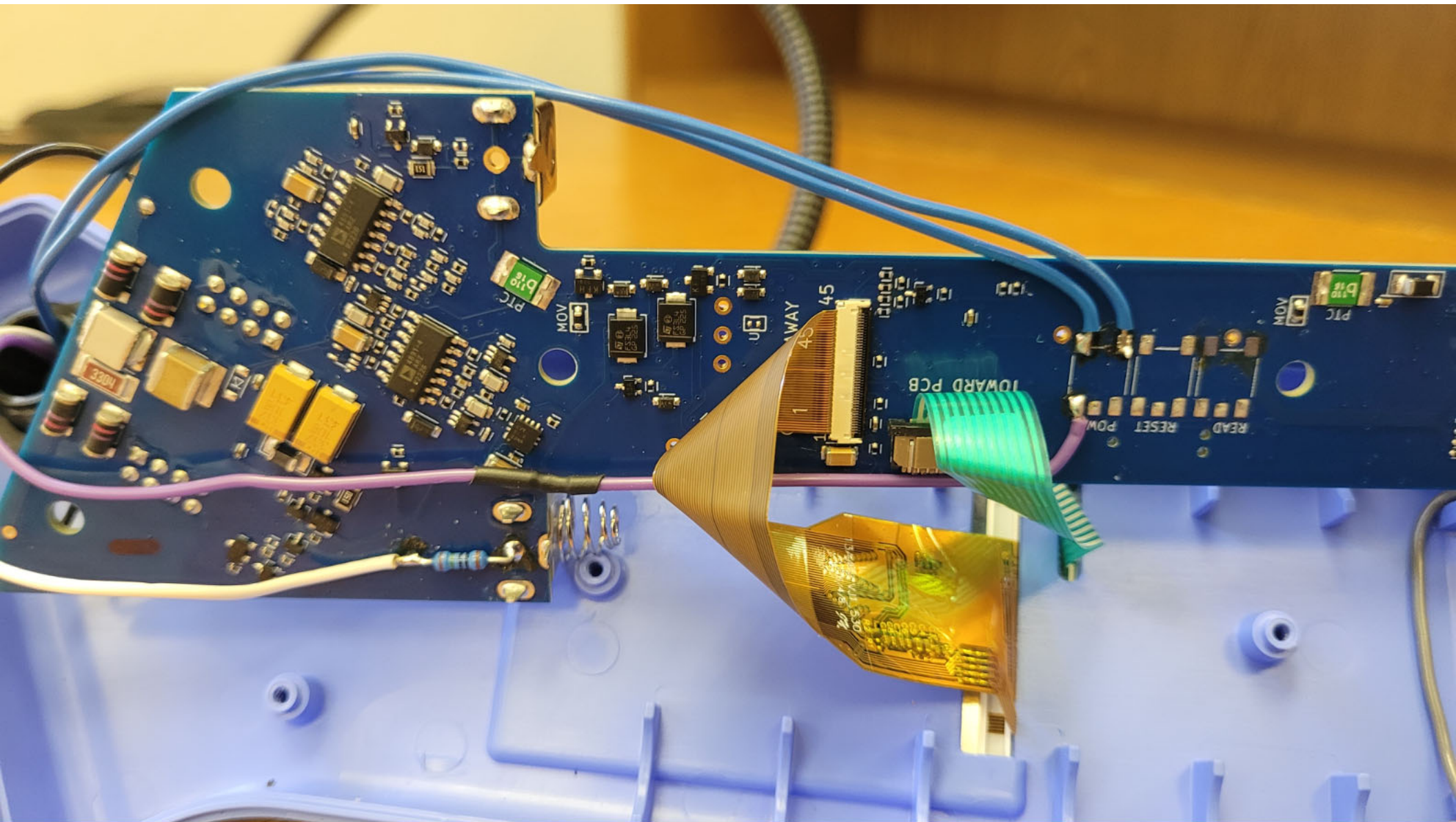
Bottom View of the PCB - View #1





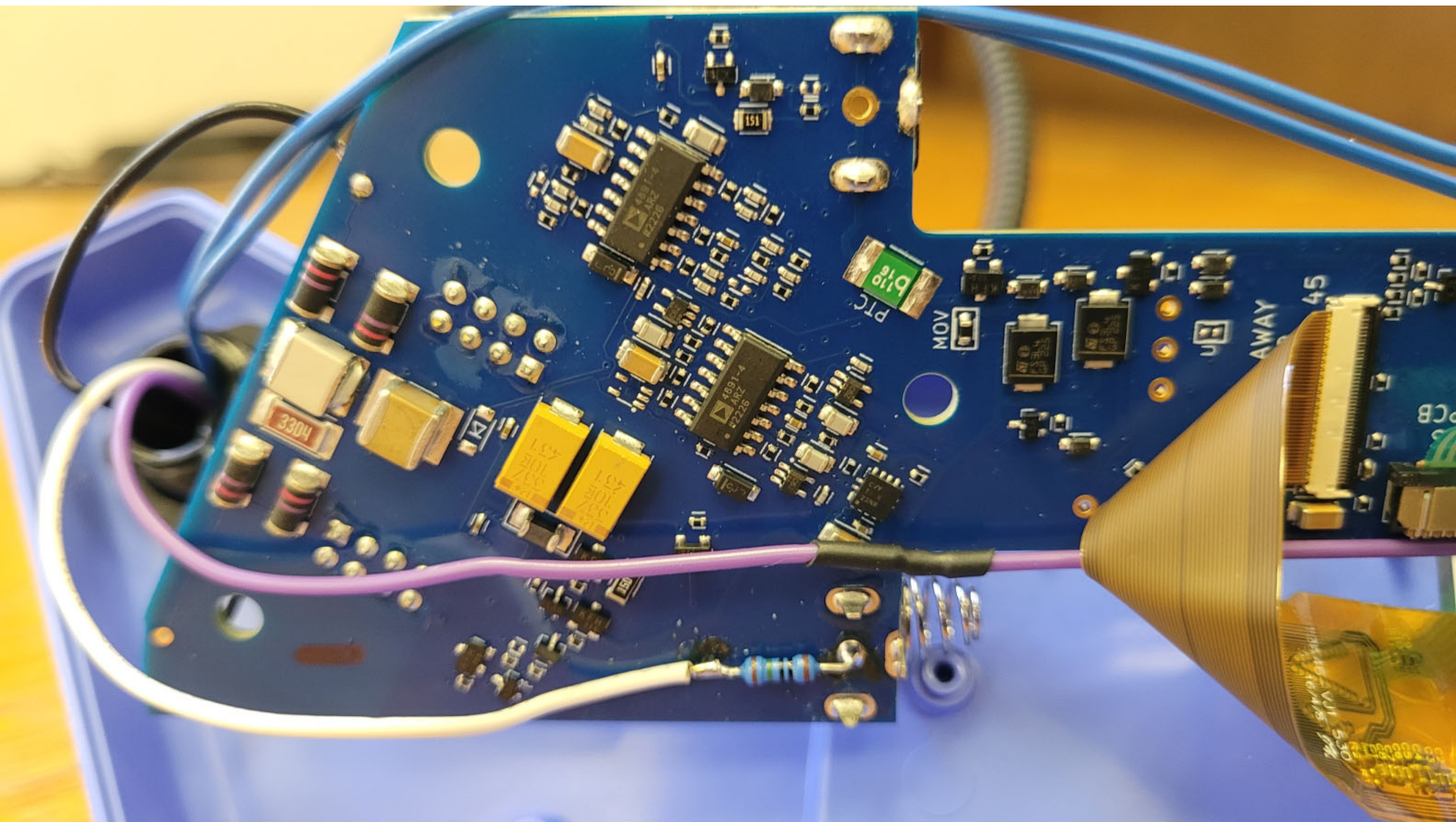
Bottom View of the PCB - Closeup #1





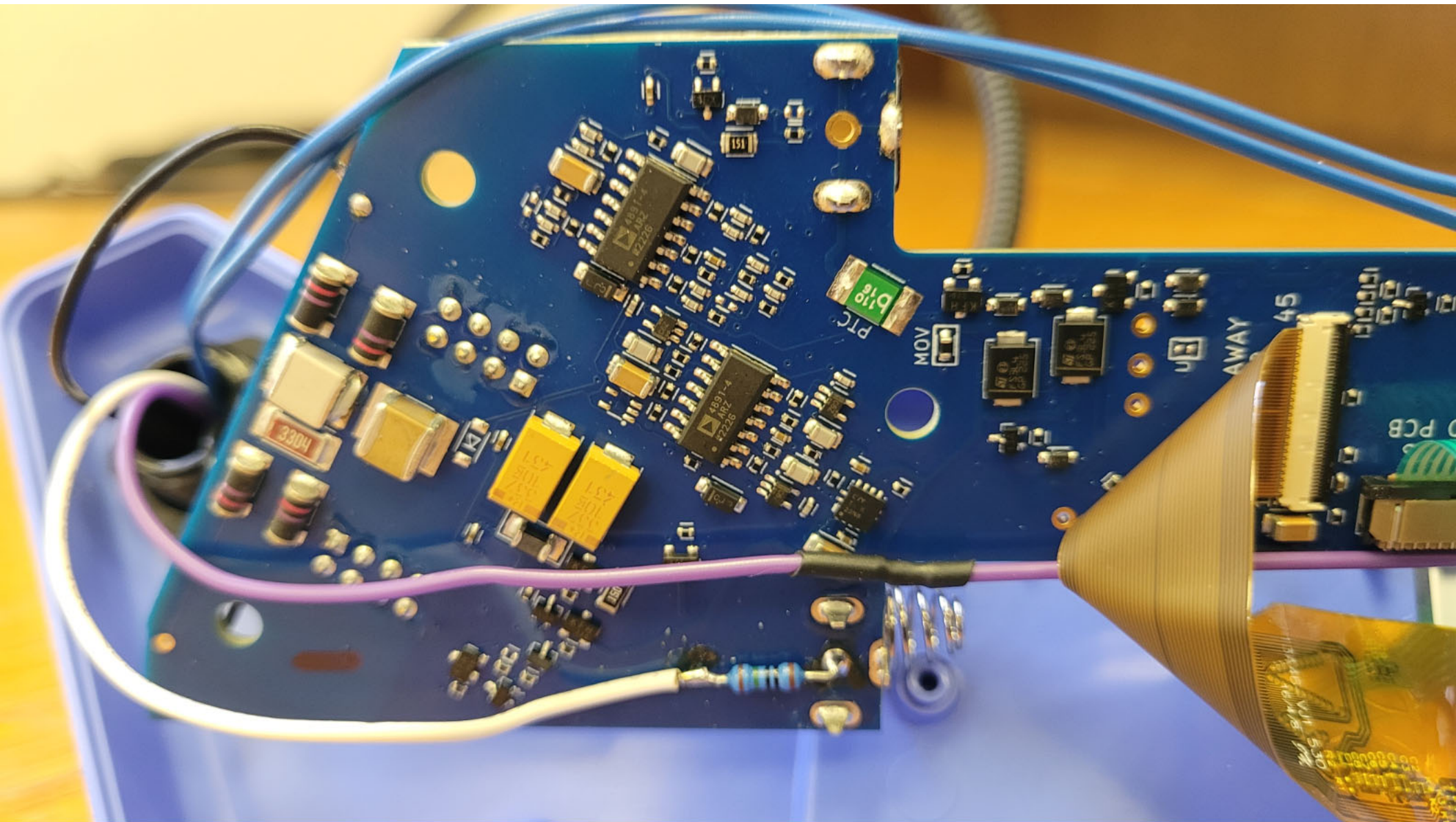
Bottom View of the PCB - Closeup #2





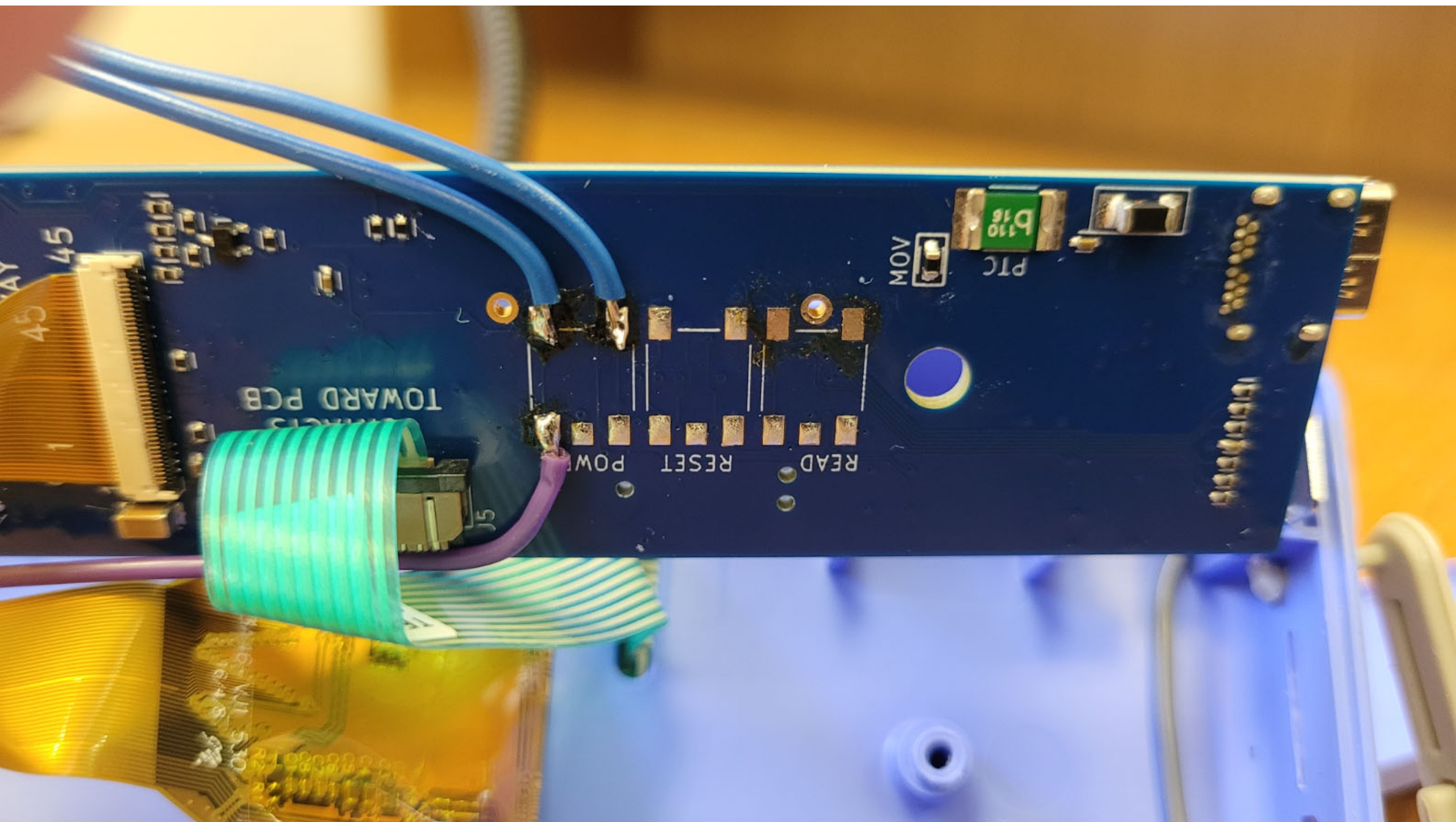
Bottom View of the PCB - Closeup #3





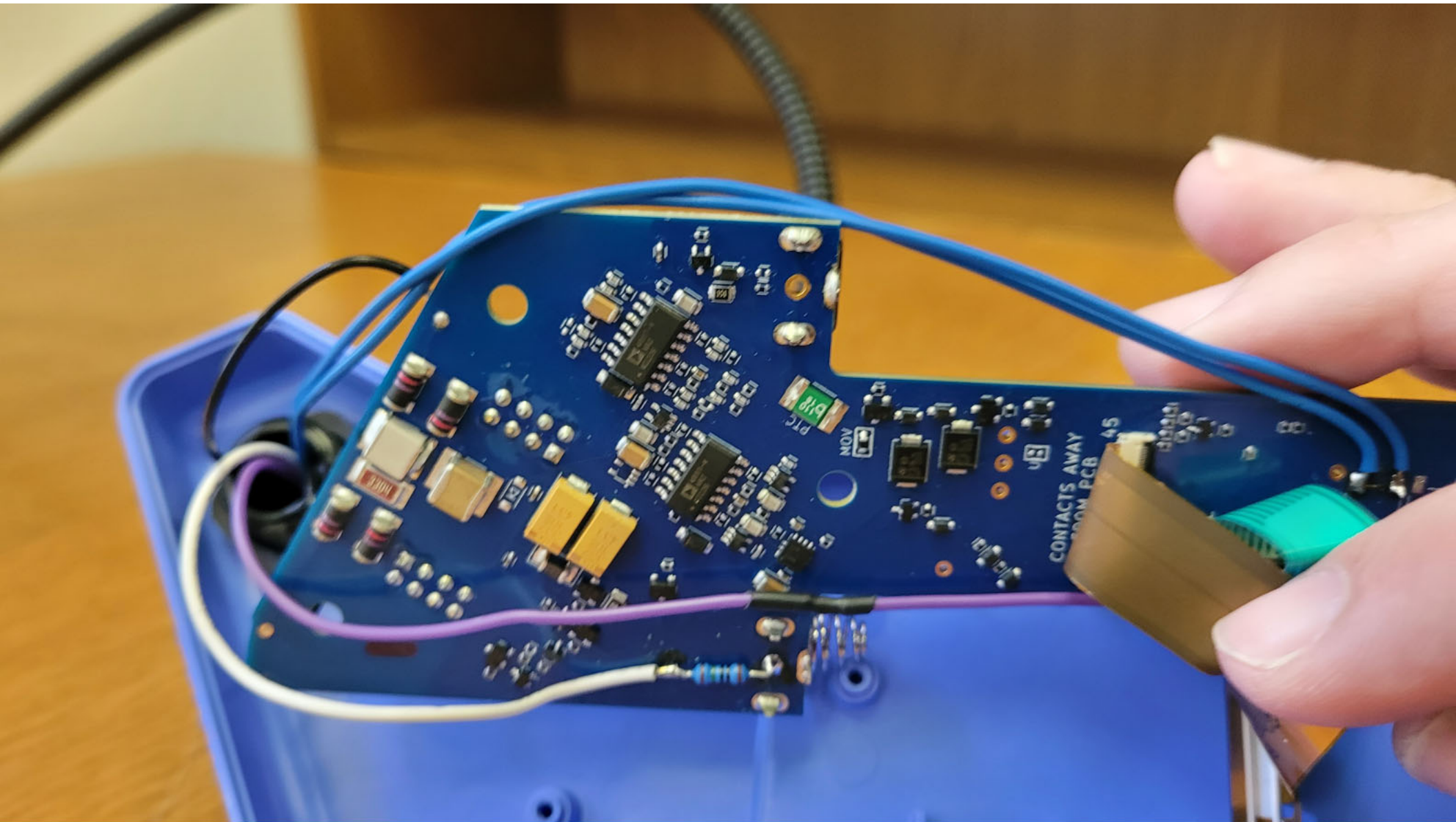
Bottom View of the PCB - Closeup #4





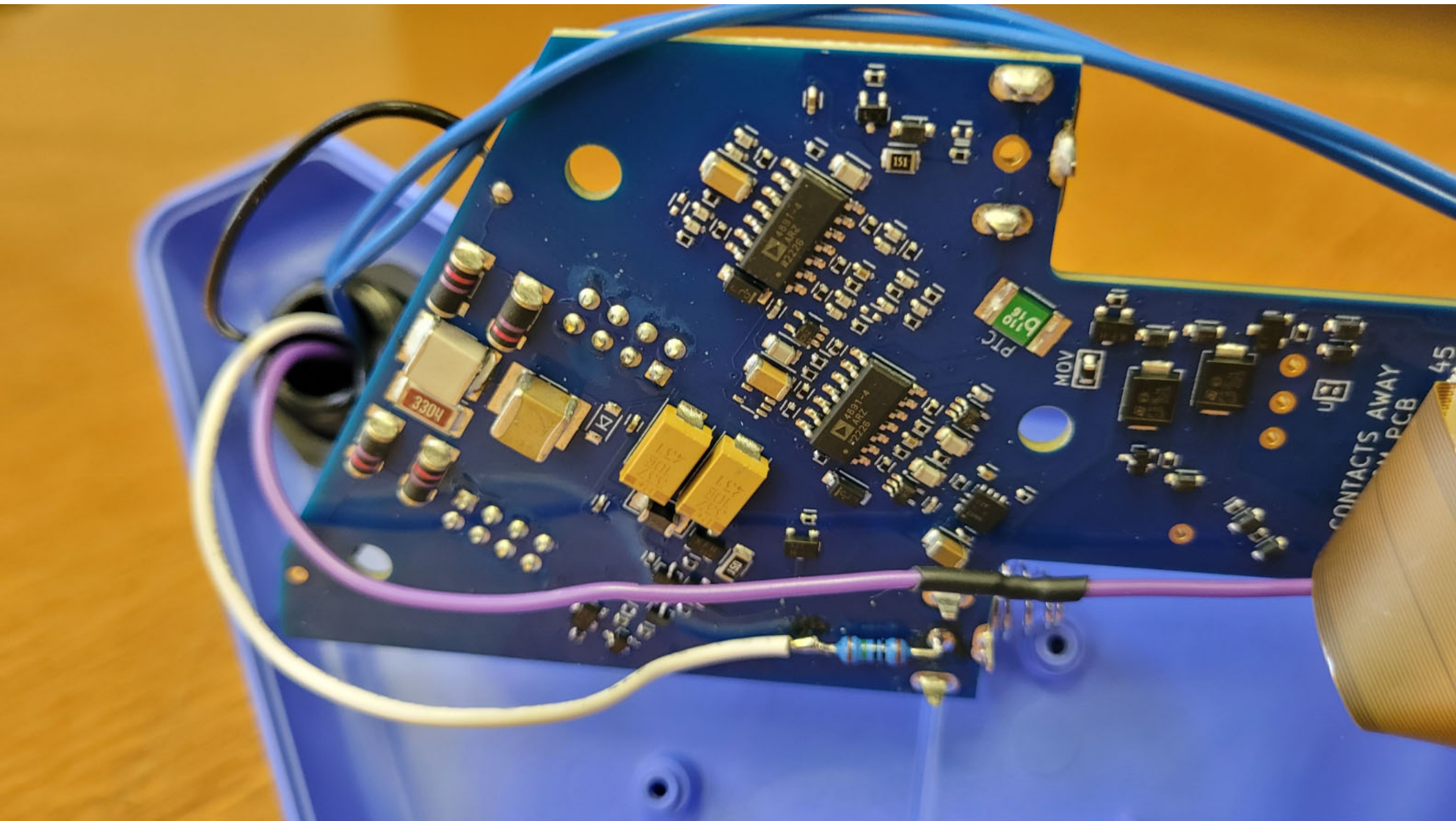
Bottom View of the PCB - Closeup #5





Bottom View of the PCB - Closeup #6





Bottom View of the PCB - Closeup #7