

**Calibration Laboratory of
Schmid & Partner
Engineering AG**
Zeughausstrasse 43, 8004 Zurich, Switzerland



S Schweizerischer Kalibrierdienst
C Service suisse d'étalonnage
S Servizio svizzero di taratura
S Swiss Calibration Service

Accredited by the Swiss Accreditation Service (SAS)
The Swiss Accreditation Service is one of the signatories to the EA
Multilateral Agreement for the recognition of calibration certificates

Accreditation No.: **SCS 0108**

Client **Sporton**
Kunshan City

Certificate No. **CD2600V3-1030_Jun25**

CALIBRATION CERTIFICATE

Object **CD2600V3 - SN: 1030**

Calibration procedure(s) **QA CAL-20.v7
Calibration Procedure for Validation Sources in air**

Calibration date: **June 12, 2025**

This calibration certificate documents the traceability to national standards, which realize the physical units of measurements (SI).
The measurements and the uncertainties with confidence probability are given on the following pages and are part of the certificate.

All calibrations have been conducted in the closed laboratory facility: environment temperature (22 ± 3)°C and humidity < 70%.

Calibration Equipment used (M&TE critical for calibration)

Primary Standards	ID #	Cal Date (Certificate No.)	Scheduled Calibration
Power meter NRP2	SN: 104778	26-Mar-25 (No. 217-04289)	Mar-26
Power sensor NRP-Z91	SN: 103245	26-Mar-25 (No. 217-04289)	Mar-26
Reference 20 dB Attenuator	SN: BH9394 (20k)	26-Mar-25 (No. 217-04284)	Mar-26
3.5mm mismatch combination	SN: 1152	24-Mar-25 (No. 217-04293)	Mar-26
Probe EF3DV3	SN: 4013	26-Nov-24 (No. EF3-4013_Nov24)	Nov-25
DAE4	SN: 781	07-Feb-25 (No. DAE4-781_Feb25)	Feb-26

Secondary Standards	ID #	Check Date (in house)	Scheduled Check
Power Sensor R&S NRP-Z23	SN: 100063	29-Nov-24 (No. HAC Tower-IHC-202411)	In house check: Nov-25
Power Sensor HP E4412A	SN: MY41498700	29-Nov-24 (No. HAC Tower-IHC-202411)	In house check: Nov-25
Power Sensor HP E4412A	SN: MY41502623	29-Nov-24 (No. HAC Tower-IHC-202411)	In house check: Nov-25
Signal Generator R&S SMT-06	SN: 837633/005	29-Nov-24 (No. HAC Tower-IHC-202411)	In house check: Nov-25
Network Analyzer Agilent E8358A	SN: US41080477	30-Sep-24 (No. 675-CAL18-S4454-Sep24)	In house check: Sep-26

	Name	Function	Signature
Calibrated by:	Claudio Leubler	Laboratory Technician	
Approved by:	Sven Kühn	Technical Manager	

Issued: June 12, 2025

This calibration certificate shall not be reproduced except in full without written approval of the laboratory.

**Calibration Laboratory of
Schmid & Partner
Engineering AG**
Zeughausstrasse 43, 8004 Zurich, Switzerland



S Schweizerischer Kalibrierdienst
C Service suisse d'étalonnage
S Servizio svizzero di taratura
S Swiss Calibration Service

Accredited by the Swiss Accreditation Service (SAS)

The Swiss Accreditation Service is one of the signatories to the EA
Multilateral Agreement for the recognition of calibration certificates

Accreditation No.: **SCS 0108**

References

- [1] ANSI-C63.19-2019 (ANSI-C63.19-2011)
American National Standard, Methods of Measurement of Compatibility between Wireless Communications Devices and Hearing Aids.

Methods Applied and Interpretation of Parameters:

- *Coordinate System:* y-axis is in the direction of the dipole arms. z-axis is from the basis of the antenna (mounted on the table) towards its feed point between the two dipole arms. x-axis is normal to the other axes. In coincidence with the standards [1], the measurement planes (probe sensor center) are selected to be at a distance of 15 mm above the top metal edge of the dipole arms.
- *Measurement Conditions:* Further details are available from the hardcopies at the end of the certificate. All figures stated in the certificate are valid at the frequency indicated. The forward power to the dipole connector is set with a calibrated power meter connected and monitored with an auxiliary power meter connected to a directional coupler. While the dipole under test is connected, the forward power is adjusted to the same level.
- *Antenna Positioning:* The dipole is mounted on a HAC Test Arch phantom using the matching dipole positioner with the arms horizontal and the feeding cable coming from the floor. The measurements are performed in a shielded room with absorbers around the setup to reduce the reflections. It is verified before the mounting of the dipole under the Test Arch phantom, that its arms are perfectly in a line. It is installed on the HAC dipole positioner with its arms parallel below the dielectric reference wire and able to move elastically in vertical direction without changing its relative position to the top center of the Test Arch phantom. The vertical distance to the probe is adjusted after dipole mounting with a DASY5 Surface Check job. Before the measurement, the distance between phantom surface and probe tip is verified. The proper measurement distance is selected by choosing the matching section of the HAC Test Arch phantom with the proper device reference point (upper surface of the dipole) and the matching grid reference point (tip of the probe) considering the probe sensor offset. The vertical distance to the probe is essential for the accuracy.
- *Feed Point Impedance and Return Loss:* These parameters are measured using a Vector Network Analyzer. The impedance is specified at the SMA connector of the dipole. The influence of reflections was eliminating by applying the averaging function while moving the dipole in the air, at least 70cm away from any obstacles.
- *E-field distribution:* E field is measured in the x-y-plane with an isotropic E-field probe with 100 mW forward power to the antenna feed point. In accordance with [1], the scan area is 20mm wide, its length exceeds the dipole arm length (180 or 90mm). The sensor center is 15 mm (in z) above the metal top of the dipole arms. Two 3D maxima are available near the end of the dipole arms. Assuming the dipole arms are perfectly in one line, the average of these two maxima (in subgrid 2 and subgrid 8) is determined to compensate for any non-parallelity to the measurement plane as well as the sensor displacement. The E-field value stated as calibration value represents the maximum of the interpolated 3D-E-field, in the plane above the dipole surface.

The reported uncertainty of measurement is stated as the standard uncertainty of measurement multiplied by the coverage factor $k=2$, which for a normal distribution corresponds to a coverage probability of approximately 95%.

Measurement Conditions

DASY system configuration, as far as not given on page 1.

DASY Version	DASY5	V52.10.4
Phantom	HAC Test Arch	
Distance Dipole Top - Probe Center	15 mm	
Scan resolution	dx, dy = 5 mm	
Frequency	2600 MHz \pm 1 MHz	
Input power drift	< 0.05 dB	

Maximum Field values at 2600 MHz

E-field 15 mm above dipole surface	condition	Interpolated maximum
Maximum measured above high end	100 mW input power	84.2 V/m = 38.50 dBV/m
Maximum measured above low end	100 mW input power	84.2 V/m = 38.50 dBV/m
Averaged maximum above arm	100 mW input power	84.2 V/m \pm 12.8 % (k=2)

Appendix (Additional assessments outside the scope of SCS 0108)

Antenna Parameters

Frequency	Return Loss	Impedance
2450 MHz	18.8 dB	45.3 Ω - 9.9 j Ω
2550 MHz	31.2 dB	47.4 Ω + 0.6 j Ω
2600 MHz	37.1 dB	49.7 Ω + 1.4 j Ω
2650 MHz	33.4 dB	51.7 Ω + 1.4 j Ω
2750 MHz	20.8 dB	55.1 Ω - 8.1 j Ω

3.2 Antenna Design and Handling

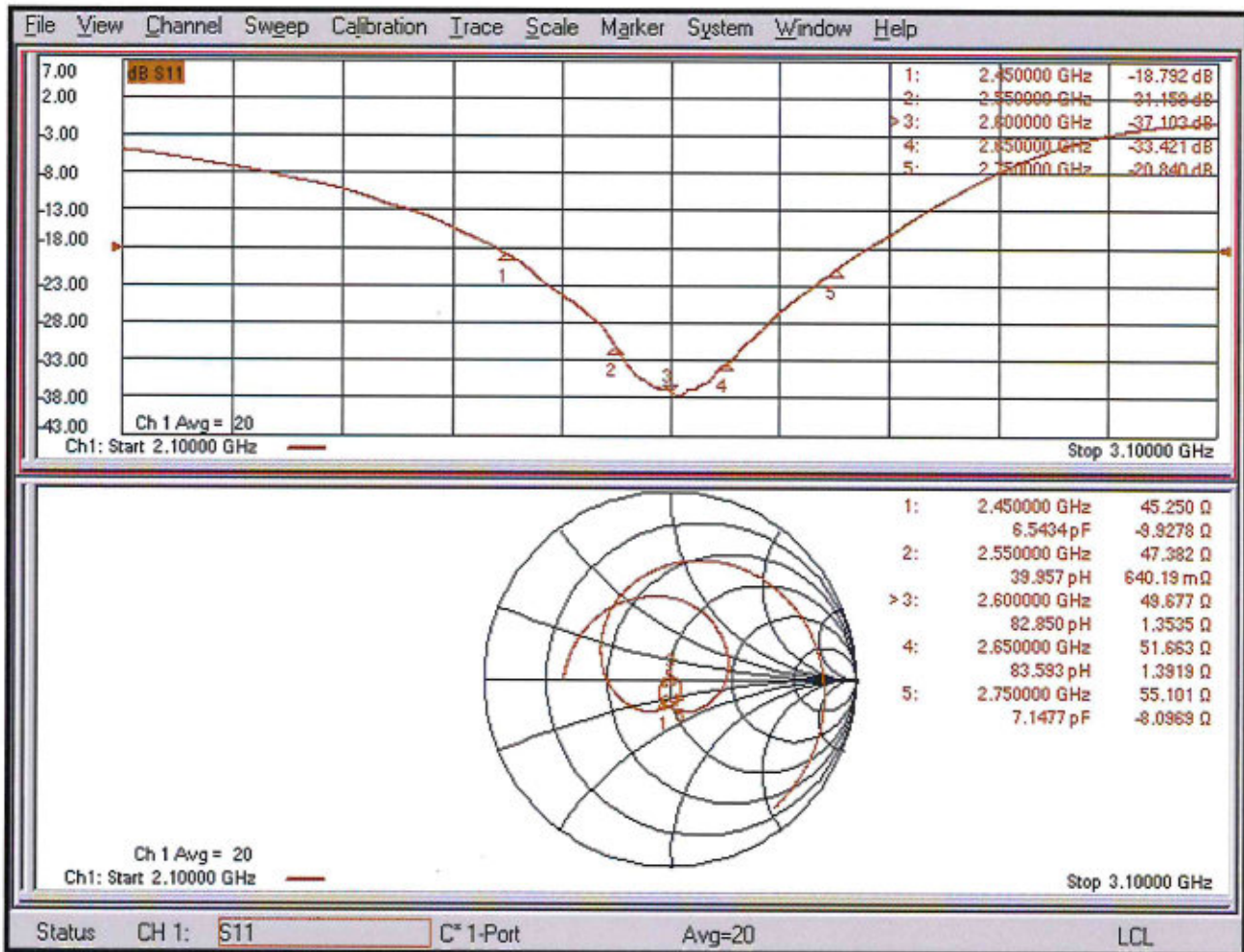
The calibration dipole has a symmetric geometry with a built-in two stub matching network, which leads to the enhanced bandwidth.

The dipole is built of standard semirigid coaxial cable. The internal matching line is open ended. The antenna is therefore open for DC signals.

Do not apply force to dipole arms, as they are liable to bend. The soldered connections near the feedpoint may be damaged. After excessive mechanical stress or overheating, check the impedance characteristics to ensure that the internal matching network is not affected.

After long term use with 40W radiated power, only a slight warming of the dipole near the feedpoint can be measured.

Impedance Measurement Plot



DASY5 E-field Result

Date: 12.06.2025

Test Laboratory: SPEAG Lab2

DUT: HAC Dipole 2600 MHz; Type: CD2600V3; Serial: CD2600V3 - SN: 1030

Communication System: UID 0 - CW ; Frequency: 2600 MHz

Medium parameters used: $\sigma = 0$ S/m, $\epsilon_r = 1$; $\rho = 0$ kg/m³

Phantom section: RF Section

Measurement Standard: DASY5 (IEEE/IEC/ANSI C63.19-2011)

DASY52 Configuration:

- Probe: EF3DV3 - SN4013; ConvF(1, 1, 1) @ 2600 MHz; Calibrated: 26.11.2024
- Sensor-Surface: (Fix Surface)
- Electronics: DAE4 Sn781; Calibrated: 07.02.2025
- Phantom: HAC Test Arch with AMCC; Type: SD HAC P01 BA; Serial: 1070
- DASY52 52.10.4(1535); SEMCAD X 14.6.14(7501)

Dipole E-Field measurement @ 2600MHz/E-Scan - 2600MHz d=15mm/Hearing Aid Compatibility Test (41x181x1):

Interpolated grid: dx=0.5000 mm, dy=0.5000 mm

Device Reference Point: 0, 0, -6.3 mm

Reference Value = 135.0 V/m; Power Drift = -0.01 dB

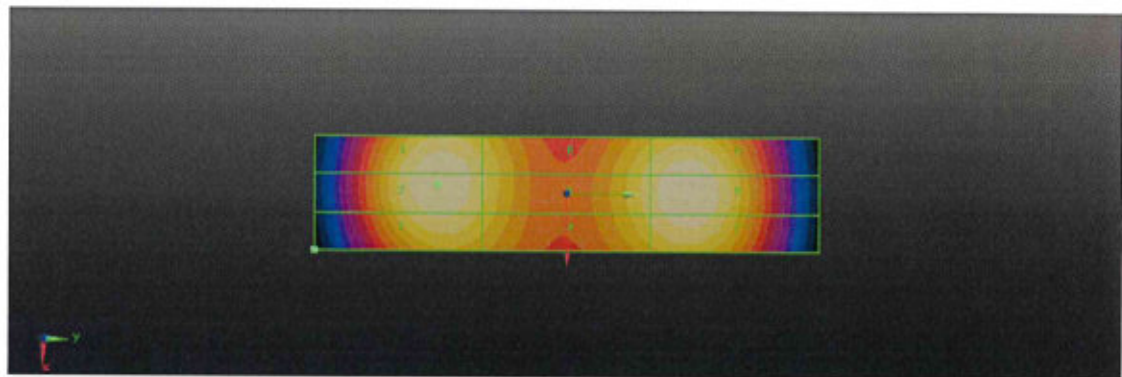
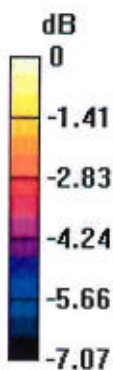
Applied MIF = 0.00 dB

RF audio interference level = 38.50 dBV/m

Emission category: M2

MIF scaled E-field

Grid 1 M2	Grid 2 M2	Grid 3 M2
38.14 dBV/m	38.5 dBV/m	38.45 dBV/m
Grid 4 M2	Grid 5 M2	Grid 6 M2
37.72 dBV/m	37.86 dBV/m	37.77 dBV/m
Grid 7 M2	Grid 8 M2	Grid 9 M2
38.31 dBV/m	38.5 dBV/m	38.35 dBV/m



0 dB = 84.18 V/m = 38.50 dBV/m

IMPORTANT NOTICE

USAGE OF THE DAE4 SN: 1338

The DAE unit is a delicate, high precision instrument and requires careful treatment by the user. There are no serviceable parts inside the DAE. Special attention must be given to the following points:

Battery Exchange: The battery cover of the DAE4 unit is closed using a screw, over tightening the screw may cause the threads inside the DAE to wear out.

Shipping of the DAE: Before shipping the DAE to SPEAG for calibration, remove the batteries and pack the DAE in an antistatic bag. This antistatic bag shall then be packed into a larger box or container which protects the DAE from impacts during transportation. The package shall be marked to indicate that a fragile instrument is inside.

E-Stop Failures: Touch detection may be malfunctioning due to broken magnets in the E-stop. Rough handling of the E-stop may lead to damage of these magnets. Touch and collision errors are often caused by dust and dirt accumulated in the E-stop. To prevent E-stop failure, the customer shall always mount the probe to the DAE carefully and keep the DAE unit in a non-dusty environment if not used for measurements.

Repair: Minor repairs are performed at no extra cost during the calibration. However, SPEAG reserves the right to charge for any repair especially if rough unprofessional handling caused the defect.

DASY Configuration Files: Since the exact values of the DAE input resistances, as measured during the calibration procedure of a DAE unit, are not used by the DASY software, a nominal value of 200 MOhm is given in the corresponding configuration file.

Important Note:

Warranty and calibration is void if the DAE unit is disassembled partly or fully by the Customer.

Important Note:

Never attempt to grease or oil the E-stop assembly. Cleaning and readjusting of the E-stop assembly is allowed by certified SPEAG personnel only and is part of the calibration procedure.

Important Note:

To prevent damage of the DAE probe connector pins, use great care when installing the probe to the DAE. Carefully connect the probe with the connector notch oriented in the mating position. Avoid any rotational movement of the probe body versus the DAE while turning the locking nut of the connector. The same care shall be used when disconnecting the probe from the DAE.

**Calibration Laboratory of
Schmid & Partner
Engineering AG**
Zeughausstrasse 43, 8004 Zurich, Switzerland



S Schweizerischer Kalibrierdienst
C Service suisse d'étalonnage
S Servizio svizzero di taratura
S Swiss Calibration Service

Accredited by the Swiss Accreditation Service (SAS)
The Swiss Accreditation Service is one of the signatories to the EA
Multilateral Agreement for the recognition of calibration certificates

Accreditation No.: **SCS 0108**

Client **Sporton**
Kunshan City

Certificate No: **DAE4-1338_Mar25**

CALIBRATION CERTIFICATE

Object **DAE4 - SD 000 D04 BM - SN: 1338**

Calibration procedure(s) **QA CAL-06.v30**
Calibration procedure for the data acquisition electronics (DAE)

Calibration date: **March 18, 2025**

This calibration certificate documents the traceability to national standards, which realize the physical units of measurements (SI).
The measurements and the uncertainties with confidence probability are given on the following pages and are part of the certificate.

All calibrations have been conducted in the closed laboratory facility: environment temperature $(22 \pm 3)^\circ\text{C}$ and humidity $< 70\%$.

Calibration Equipment used (M&TE critical for calibration)

Primary Standards	ID #	Cal Date (Certificate No.)	Scheduled Calibration
Keithley Multimeter Type 2001	SN: 0810278	27-Aug-24 (No:40547)	Aug-25
Secondary Standards	ID #	Check Date (in house)	Scheduled Check
Auto DAE Calibration Unit	SE UWS 053 AA 1001	23-Jan-25 (in house check)	In house check: Jan-26
Calibrator Box V2.1	SE UMS 006 AA 1002	23-Jan-25 (in house check)	In house check: Jan-26

Calibrated by: **Name** **Adrian Gehring** **Function** **Laboratory Technician**

Approved by: **Sven Kühn** **Technical Manager**

Signature

Issued: March 18, 2025

This calibration certificate shall not be reproduced except in full without written approval of the laboratory.



Accredited by the Swiss Accreditation Service (SAS)

The Swiss Accreditation Service is one of the signatories to the EA
Multilateral Agreement for the recognition of calibration certificates

Accreditation No.: **SCS 0108**

Glossary

DAE	data acquisition electronics
Connector angle	information used in DASY system to align probe sensor X to the robot coordinate system.

Methods Applied and Interpretation of Parameters

- *DC Voltage Measurement:* Calibration Factor assessed for use in DASY system by comparison with a calibrated instrument traceable to national standards. The figure given corresponds to the full scale range of the voltmeter in the respective range.
- *Connector angle:* The angle of the connector is assessed measuring the angle mechanically by a tool inserted. Uncertainty is not required.
- The following parameters as documented in the Appendix contain technical information as a result from the performance test and require no uncertainty.
 - *DC Voltage Measurement Linearity:* Verification of the Linearity at +10% and -10% of the nominal calibration voltage. Influence of offset voltage is included in this measurement.
 - *Common mode sensitivity:* Influence of a positive or negative common mode voltage on the differential measurement.
 - *Channel separation:* Influence of a voltage on the neighbor channels not subject to an input voltage.
 - *AD Converter Values with inputs shorted:* Values on the internal AD converter corresponding to zero input voltage
 - *Input Offset Measurement:* Output voltage and statistical results over a large number of zero voltage measurements.
 - *Input Offset Current:* Typical value for information; Maximum channel input offset current, not considering the input resistance.
 - *Input resistance:* Typical value for information: DAE input resistance at the connector, during internal auto-zeroing and during measurement.
 - *Low Battery Alarm Voltage:* Typical value for information. Below this voltage, a battery alarm signal is generated.
 - *Power consumption:* Typical value for information. Supply currents in various operating modes.

DC Voltage Measurement

A/D - Converter Resolution nominal

High Range: 1LSB = 6.1 μ V , full range = -100...+300 mV

Low Range: 1LSB = 61 nV , full range = -1.....+3mV

DASY measurement parameters: Auto Zero Time: 3 sec; Measuring time: 3 sec

Calibration Factors	X	Y	Z
High Range	403.704 \pm 0.02% (k=2)	404.285 \pm 0.02% (k=2)	404.239 \pm 0.02% (k=2)
Low Range	3.97308 \pm 1.50% (k=2)	3.97869 \pm 1.50% (k=2)	3.97584 \pm 1.50% (k=2)

Connector Angle

Connector Angle to be used in DASY system	239.0 ° \pm 1 °
---	-------------------

Appendix (Additional assessments outside the scope of SCS0108)**1. DC Voltage Linearity**

High Range		Reading (μV)	Difference (μV)	Error (%)
Channel X	+ Input	199992.53	-0.29	-0.00
Channel X	+ Input	20001.00	-0.52	-0.00
Channel X	- Input	-20000.47	2.46	-0.01
Channel Y	+ Input	199989.42	-3.35	-0.00
Channel Y	+ Input	19999.32	-2.30	-0.01
Channel Y	- Input	-20004.61	-1.78	0.01
Channel Z	+ Input	199990.56	-1.87	-0.00
Channel Z	+ Input	20000.01	-1.69	-0.01
Channel Z	- Input	-20004.74	-1.78	0.01

Low Range		Reading (μV)	Difference (μV)	Error (%)
Channel X	+ Input	2000.46	0.18	0.01
Channel X	+ Input	200.70	0.23	0.12
Channel X	- Input	-199.07	0.31	-0.16
Channel Y	+ Input	2000.44	0.23	0.01
Channel Y	+ Input	199.92	-0.31	-0.15
Channel Y	- Input	-199.83	-0.35	0.18
Channel Z	+ Input	1999.70	-0.37	-0.02
Channel Z	+ Input	198.87	-1.31	-0.65
Channel Z	- Input	-200.96	-1.37	0.68

2. Common mode sensitivity

DASY measurement parameters: Auto Zero Time: 3 sec; Measuring time: 3 sec

	Common mode Input Voltage (mV)	High Range Average Reading (μV)	Low Range Average Reading (μV)
Channel X	200	7.70	6.22
	- 200	-5.51	-6.62
Channel Y	200	-20.79	-21.30
	- 200	20.69	20.30
Channel Z	200	-3.10	-3.08
	- 200	1.18	0.72

3. Channel separation

DASY measurement parameters: Auto Zero Time: 3 sec; Measuring time: 3 sec

	Input Voltage (mV)	Channel X (μV)	Channel Y (μV)	Channel Z (μV)
Channel X	200	-	3.71	-3.70
Channel Y	200	8.36	-	4.83
Channel Z	200	9.23	5.81	-

4. AD-Converter Values with inputs shorted

DASY measurement parameters: Auto Zero Time: 3 sec; Measuring time: 3 sec

	High Range (LSB)	Low Range (LSB)
Channel X	16206	15582
Channel Y	16277	15386
Channel Z	16104	15088

5. Input Offset Measurement

DASY measurement parameters: Auto Zero Time: 3 sec; Measuring time: 3 sec

Input 10M Ω

	Average (μ V)	min. Offset (μ V)	max. Offset (μ V)	Std. Deviation (μ V)
Channel X	1.07	-0.06	2.70	0.43
Channel Y	-0.29	-1.54	0.58	0.38
Channel Z	-0.55	-1.50	0.19	0.35

6. Input Offset Current

Nominal Input circuitry offset current on all channels: <25fA

7. Input Resistance (Typical values for information)

	Zeroing (kOhm)	Measuring (MOhm)
Channel X	200	200
Channel Y	200	200
Channel Z	200	200

8. Low Battery Alarm Voltage (Typical values for information)

Typical values	Alarm Level (VDC)
Supply (+ Vcc)	+7.9
Supply (- Vcc)	-7.6

9. Power Consumption (Typical values for information)

Typical values	Switched off (mA)	Stand by (mA)	Transmitting (mA)
Supply (+ Vcc)	+0.01	+6	+14
Supply (- Vcc)	-0.01	-8	-9

Calibration Laboratory ofSchmid & Partner
Engineering AG

Zeughausstrasse 43, 8004 Zurich, Switzerland



S Schweizerischer Kalibrierdienst
C Service suisse d'étalonnage
S Servizio svizzero di taratura
S Swiss Calibration Service

Accredited by the Swiss Accreditation Service (SAS)

The Swiss Accreditation Service is one of the signatories to the EA
 Multilateral Agreement for the recognition of calibration certificates

Accreditation No.: **SCS 0108**

Client

Sporton
 Kunshan City

Certificate No.

EF-4050_Mar25**CALIBRATION CERTIFICATE**

Object EF3DV3 - SN:4050

Calibration procedure(s) QA CAL-02.v9, QA CAL-25.v8
 Calibration procedure for E-field probes optimized for close near field
 evaluations in air

Calibration date March 25, 2025

This calibration certificate documents the traceability to national standards, which realize the physical units of measurements (SI).
 The measurements and the uncertainties with confidence probability are given on the following pages and are part of the certificate.

All calibrations have been conducted in the closed laboratory facility: environment temperature $(22 \pm 3)^\circ\text{C}$ and humidity $< 70\%$.

Calibration Equipment used (M&TE critical for calibration)

Primary Standards	ID	Calibration Date (Certificate No.)	Sched. Cal.
Power meter NRP2	SN: 104778	26-Mar-24 (No. 217-04036/04037)	Mar-25
Power sensor NRP-Z91	SN: 103244	26-Mar-24 (No. 217-04036)	Mar-25
Power sensor NRP-Z91	SN: 103245	26-Mar-24 (No. 217-04037)	Mar-25
Reference 20 dB Attenuator	SN: CC2552 (20x)	26-Mar-24 (No. 217-04046)	Mar-25
DAE4	SN: 789	10-Feb-25 (No. DAE4-789_Feb25)	Feb-26
Reference Probe ER3DV6	SN: 2328	01-Oct-24 (No. ER3-2328_Oct24)	Oct-25

Secondary Standards	ID	Check Date (in house)	Sched. Check
Power meter E4419B	SN: GB41293874	06-Apr-16 (in house check Jun-24)	In house check: Jun-26
Power sensor E4412A	SN: MY41498087	06-Apr-16 (in house check Jun-24)	In house check: Jun-26
Power sensor E4412A	SN: 000110210	06-Apr-16 (in house check Jun-24)	In house check: Jun-26
RF generator HP 8648C	SN: US3642U01700	04-Aug-99 (in house check Jun-24)	In house check: Jun-26
Network Analyzer E8358A	SN: US41080477	31-Mar-14 (in house check Sep-24)	In house check: Sep-26

	Name	Function	Signature
Calibrated by	Jeffrey Katzman	Laboratory Technician	
Approved by	Sven Kühn	Technical Manager	
Issued: March 25, 2025			
This calibration certificate shall not be reproduced except in full without written approval of the laboratory.			

Calibration Laboratory ofSchmid & Partner
Engineering AG

Zeughausstrasse 43, 8004 Zurich, Switzerland



S Schweizerischer Kalibrierdienst
C Service suisse d'étalonnage
S Servizio svizzero di taratura
S Swiss Calibration Service

Accredited by the Swiss Accreditation Service (SAS)

The Swiss Accreditation Service is one of the signatories to the EA
 Multilateral Agreement for the recognition of calibration certificates

Accreditation No.: **SCS 0108****Glossary**

NORM _{x,y,z}	sensitivity in free space
DCP	diode compression point
CF	crest factor (1/duty_cycle) of the RF signal
A, B, C, D	modulation dependent linearization parameters
En	incident E-field orientation normal to probe axis
Ep	incident E-field orientation parallel to probe axis
Polarization φ	φ rotation around probe axis
Polarization ϑ	ϑ rotation around an axis that is in the plane normal to probe axis (at measurement center), i.e., $\vartheta = 0$ is normal to probe axis
Connector Angle	information used in DASY system to align probe sensor X to the robot coordinate system

Calibration is Performed According to the Following Standards:

- IEEE Std 1309-2005, "IEEE Standard for calibration of electromagnetic field sensors and probes, excluding antennas, from 9 kHz to 40 GHz", December 2005
- CTIA Test Plan for Hearing Aid Compatibility, Rev 3.1.1, May 2017

Methods Applied and Interpretation of Parameters:

- NORM_{x,y,z}**: Assessed for E-field polarization $\vartheta = 0$ for XY sensors and $\vartheta = 90$ for Z sensor ($f \leq 900$ MHz in TEM-cell; $f > 1800$ MHz in R22 waveguide).
- NORM(f)_{x,y,z}** = NORM_{x,y,z} * frequency_response (see Frequency Response Chart).
- DCP_{x,y,z}**: DCP are numerical linearization parameters assessed based on the data of power sweep with CW signal. DCP does not depend on frequency nor media.
- PAR**: PAR is the Peak to Average Ratio that is not calibrated but determined based on the signal characteristics
- A_{x,y,z}; B_{x,y,z}; C_{x,y,z}; D_{x,y,z}; VR_{x,y,z}**: A, B, C, D are numerical linearization parameters assessed based on the data of power sweep for specific modulation signal. The parameters do not depend on frequency nor media. VR is the maximum calibration range expressed in RMS voltage across the diode.
- Spherical isotropy (3D deviation from isotropy)**: in a locally homogeneous field realized using an open waveguide setup
- Sensor Offset**: The sensor offset corresponds to the offset of virtual measurement center from the probe tip (on probe axis). No tolerance required.
- Connector Angle**: The angle is assessed using the information gained by determining the NORM_x (no uncertainty required).

EF3DV3 - SN:4050

March 25, 2025

Parameters of Probe: EF3DV3 - SN:4050

Basic Calibration Parameters

	Sensor X	Sensor Y	Sensor Z	Unc (k = 2)
Norm ($\mu\text{V}/(\text{V}/\text{m})^2$)	0.62	0.71	1.14	$\pm 10.1\%$
DCP (mV) ^B	100.1	100.5	96.8	$\pm 4.7\%$

Calibration Results for Frequency Response (30 MHz – 5.8 GHz)

Frequency MHz	Target E-field (En) V/m	Measured E-field (En) V/m	Deviation E-field (En)	Target E-field (Ep) V/m	Measured E-field (Ep) V/m	Deviation E-field (Ep)	Unc (k = 2)
30	77.1	77.1	0.1%	77.2	77.3	0.1%	$\pm 5.1\%$
100	77.2	78.0	1.0%	77.1	78.0	1.1%	$\pm 5.1\%$
450	77.2	78.1	1.1%	77.2	78.2	1.4%	$\pm 5.1\%$
600	77.1	77.6	0.6%	77.1	77.7	0.8%	$\pm 5.1\%$
750	77.1	77.3	0.2%	77.2	77.4	0.4%	$\pm 5.1\%$
1800	143.4	140.4	-2.1%	143.4	140.6	-1.9%	$\pm 5.1\%$
2000	135.1	129.7	-4.0%	135.2	129.9	-3.9%	$\pm 5.1\%$
2200	127.8	124.8	-2.3%	127.7	126.1	-1.3%	$\pm 5.1\%$
2500	125.4	120.2	-4.1%	125.5	121.4	-3.2%	$\pm 5.1\%$
3000	79.5	76.3	-4.0%	79.5	77.5	-2.5%	$\pm 5.1\%$
3500	256.1	255.0	-0.4%	256.1	251.1	-1.9%	$\pm 5.1\%$
3700	249.1	243.4	-2.3%	249.6	241.4	-3.3%	$\pm 5.1\%$
5200	50.1	50.3	0.3%	50.0	50.3	0.5%	$\pm 5.1\%$
5500	49.6	48.8	-1.6%	49.6	49.0	-1.3%	$\pm 5.1\%$
5800	48.9	48.0	-1.9%	48.9	47.5	-2.8%	$\pm 5.1\%$

The reported uncertainty of measurement is stated as the standard uncertainty of measurement multiplied by the coverage factor k=2, which for a normal distribution corresponds to a coverage probability of approximately 95%.

^B Linearization parameter uncertainty for maximum specified field strength.

^E Uncertainty is determined using the max. deviation from linear response applying rectangular distribution and is expressed for the square of the field value.

EF3DV3 - SN:4050

March 25, 2025

Parameters of Probe: EF3DV3 - SN:4050

Calibration Results for Modulation Response

UID	Communication System Name		A dB	B dB $\sqrt{\mu V}$	C	D dB	VR mV	Max dev.	Max Unc ^E k = 2
0	CW	X	0.00	0.00	1.00	0.00	145.7	±2.7%	±4.7%
		Y	0.00	0.00	1.00		156.9		
		Z	0.00	0.00	1.00		119.0		
10352	Pulse Waveform (200Hz, 10%)	X	3.17	66.71	10.74	10.00	60.0	±2.1%	±9.6%
		Y	5.48	73.46	14.98		60.0		
		Z	4.00	69.81	12.64		60.0		
10353	Pulse Waveform (200Hz, 20%)	X	1.86	64.86	8.87	6.99	80.0	±1.0%	±9.6%
		Y	6.00	76.40	14.87		80.0		
		Z	2.76	69.17	11.32		80.0		
10354	Pulse Waveform (200Hz, 40%)	X	0.97	63.67	7.43	3.98	95.0	±0.8%	±9.6%
		Y	12.93	85.61	16.40		95.0		
		Z	3.37	73.98	11.92		95.0		
10355	Pulse Waveform (200Hz, 60%)	X	1.00	67.07	8.33	2.22	120.0	±0.9%	±9.6%
		Y	20.00	90.65	16.75		120.0		
		Z	20.00	89.06	15.23		120.0		
10387	QPSK Waveform, 1 MHz	X	1.95	69.69	16.91	1.00	150.0	±1.8%	±9.6%
		Y	1.97	68.55	16.53		150.0		
		Z	1.94	68.31	16.54		150.0		
10388	QPSK Waveform, 10 MHz	X	2.58	70.97	17.48	0.00	150.0	±1.1%	±9.6%
		Y	2.57	70.36	17.00		150.0		
		Z	2.66	70.77	17.33		150.0		
10396	64-QAM Waveform, 100 kHz	X	3.18	73.90	20.37	3.01	150.0	±0.8%	±9.6%
		Y	3.32	72.92	19.90		150.0		
		Z	3.54	74.92	20.87		150.0		
10399	64-QAM Waveform, 40 MHz	X	3.64	68.01	16.44	0.00	150.0	±1.1%	±9.6%
		Y	3.60	67.62	16.16		150.0		
		Z	3.68	67.83	16.38		150.0		
10414	WLAN CCDF, 64-QAM, 40 MHz	X	4.75	65.58	15.66	0.00	150.0	±2.2%	±9.6%
		Y	4.93	65.77	15.69		150.0		
		Z	5.02	65.97	15.91		150.0		

Note: For details on UID parameters see Appendix

The reported uncertainty of measurement is stated as the standard uncertainty of measurement multiplied by the coverage factor k=2, which for a normal distribution corresponds to a coverage probability of approximately 95%.

^B Linearization parameter uncertainty for maximum specified field strength.

^E Uncertainty is determined using the max. deviation from linear response applying rectangular distribution and is expressed for the square of the field value.

EF3DV3 - SN:4050

March 25, 2025

Parameters of Probe: EF3DV3 - SN:4050

Sensor Frequency Model Parameters

	Sensor X	Sensor Y	Sensor Z
Frequency Corr. (LF)	-0.07	-0.06	5.32
Frequency Corr. (HF)	2.82	2.82	2.82

Sensor Model Parameters

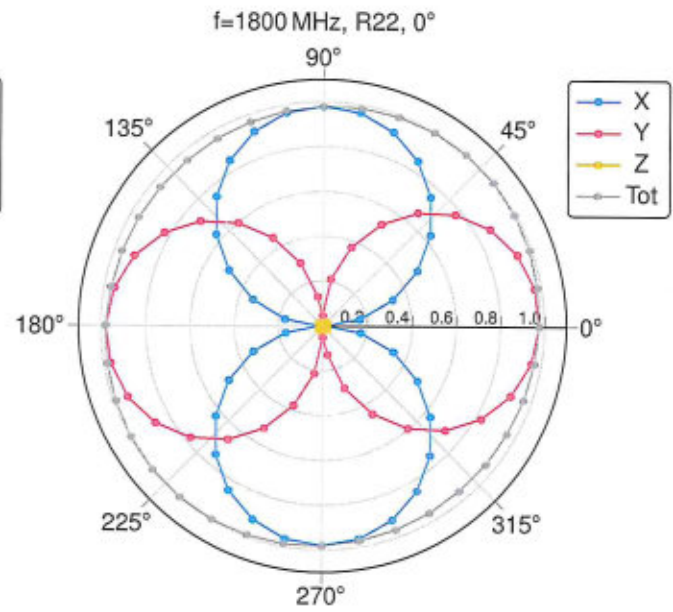
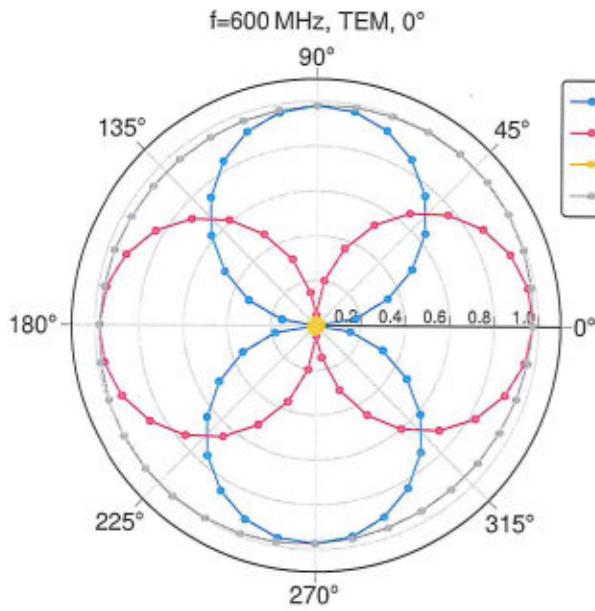
	C1 fF	C2 fF	α V^{-1}	T1 $ms V^{-2}$	T2 $ms V^{-1}$	T3 ms	T4 V^{-2}	T5 V^{-1}	T6
x	45.2	291.70	35.45	6.98	0.46	4.92	1.79	0.00	1.00
y	57.4	370.83	35.46	12.26	0.90	4.98	0.67	0.33	1.00
z	56.8	375.90	36.96	6.56	0.51	4.96	1.89	0.08	1.00

Other Probe Parameters

Sensor Arrangement	Rectangular
Connector Angle	-13.0°
Mechanical Surface Detection Mode	enabled
Optical Surface Detection Mode	disabled
Probe Overall Length	337 mm
Probe Body Diameter	12 mm
Tip Length	25 mm
Tip Diameter	4 mm
Probe Tip to Sensor X Calibration Point	1.5 mm
Probe Tip to Sensor Y Calibration Point	1.5 mm
Probe Tip to Sensor Z Calibration Point	1.5 mm

EF3DV3 - SN:4050

March 25, 2025

Receiving Pattern (ϕ), $\vartheta = 0^\circ$ **Receiving Pattern (ϕ), $\vartheta = 90^\circ$** 