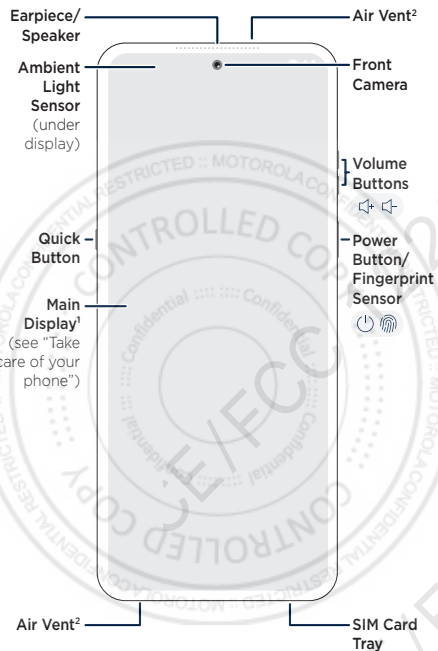


Phone open

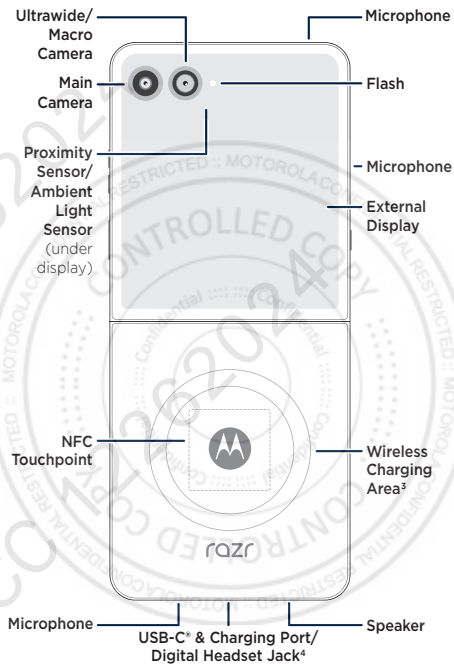


¹**Protect your main display:** Please do not remove the attached screen protector or use third party screen protectors. Doing so will void the device warranty.

²**Air vent:** Make sure any accessory, such as a protective film or cover, does not obstruct the air vent hole to avoid noise during calls or media playback.



Phone back



³**Wireless Charging:** Charge your phone using a Qi-certified wireless charger (sold separately). Your phone can wirelessly charge another Qi-compatible device. Swipe up from the home screen and tap **Settings > Battery > Power sharing**, then tap the switch to turn it on.

⁴**Use a digital headset:** To use a digital headset, you'll need one with a USB-C connector. If using a 3.5mm headset, you'll need a 3.5mm to USB-C digital headset adapter to connect it. Headset and adapter may be sold separately.

XT2551-6

read me
en-US

motorola.com

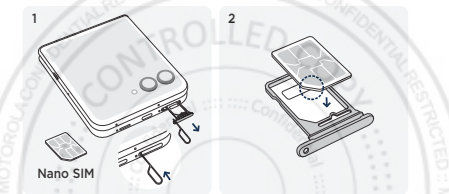


Put in the card & power on

1 With the phone closed and the external display facing up, insert the SIM tool into the SIM card tray hole to pop out the tray.

Make sure you use a standard Nano SIM card and don't cut the SIM card.

2 Insert the SIM card with the gold contacts up, and the notch aligned with the card tray, then gently push the tray into the slot.



eSIM option: Your phone may support an eSIM (embedded SIM card) in addition to the physical SIM card. Contact your service provider for details if you want to activate and use it.

Power on and off

- Press and hold the Power button to turn on your phone, then follow the prompts to get started.
- To turn off your phone, press the Power and Volume Up buttons + at the same time.

Take care of your phone

To guarantee your warranty service and ensure you have a satisfying phone experience, please care for your phone as follows:

- Don't use third-party screen protectors. Your phone comes with a Motorola-developed screen protector customized to Razr's unique foldable design. The Motorola screen protector is of superior quality and preserves the predicted service life of your phone. In contrast, using third-party screen protectors may reduce your phone's screen sensitivity, cause the main display to become unresponsive, damage the screen, or cause other touch screen problems. In such cases, Motorola reserves the right to evaluate the situation and decide whether to provide you with free-of-charge warranty service during the remaining warranty period.
- Contact an authorized Motorola service center if your screen protector has air bubbles, warps, or separates from the main display during use. We may replace the screen protector because a compromised screen protector can damage the main display and shorten the service life of the phone.
- Only replace your screen protector using Motorola-approved service personnel who use professional equipment. Don't replace the screen protector in service centers that Motorola doesn't authorize or try to remove or replace the screen protector yourself. This may damage the main display and void the warranty.
- Take care not to physically damage your phone. Don't puncture or apply excessive force to the main display with a hard or sharp object while carrying your phone. Before closing the phone, always ensure that there are no obstructions between the screens or hinges. Items such as cards, coins, keys, and other objects can damage your screen or prevent your phone hinge from closing properly. Don't use excessive force to press the middle area of the screen. Avoid exposing your phone to water, coffee, or other liquids. Also, don't expose your phone to tiny pieces of debris, such as grit.
- Important:** This product contains magnets. Always keep products with magnets more than 20cm (8 inches) from medical devices, such as pacemakers, internal cardio defibrillators, or other devices that can be affected by a magnetic field. Also, keep away from credit cards, ID cards, and other media that use magnetically encoded information.
- Reminder:** The crease at the bend on the main display and the faint noise you may hear while flipping open the phone are part of the design and do not impact product durability.

Help & more

Get answers, updates, and info:

- Help is here:** From the home screen, swipe up and tap **Settings** > **Help** to learn how to use your phone and get support.
- Get more:** Get software, user guides, and more at www.motorola.com/myrazr.
- Get apps:** Tap **Play Store** to browse and download apps.
- Connect with 5G:** 5G service plan and 5G network coverage required; available only in select areas; device not compatible with all 5G networks. Contact your service provider for details.

Legal information. This guide provides important legal, safety, and regulatory information that you should read before using your product. For the complete legal information, from the home screen swipe up and tap **Settings** > **Q**, then type **Legal information**, or visit www.motorola.com/device-legal.

Dust and water resistance. Tested under controlled laboratory conditions, the phone is water, splash and dust resistant to a rating of IP48 (IEC 60529) and can be submerged in up to 1.5 meters in still, fresh water for up to 30 minutes. Exposure to conditions beyond this rating is not covered by warranty. Resistance will decrease as a result of normal wear. Not designed to work while submerged underwater. Do not expose to pressurized water, or liquids other than fresh water. Do not attempt to charge a wet phone. Designed to protect against ingress of solid objects larger than 1 millimeter. Not waterproof or dustproof. For more information, swipe up and tap **Settings** > **Help**.

Charging and battery safety. The battery in your phone can be removed by suitably competent personnel following Motorola-approved repair and service manuals. To prevent possible burning and injury, always follow the instructions provided. If your phone becomes unresponsive, press and hold the Power button until the screen goes dark and your phone restarts.

The phone is PD (Power Delivery) and QC (Quick Charge) capable. For the fastest charging speeds, choose a Motorola 68W or higher USB-C PD charger (may be sold separately) with the included PD cable. Use of other chargers is not recommended and may impair the charging performance. The power delivered by the charger must be between min 5 Watts required by the radio equipment, and max 68 Watts (or higher) to achieve the fastest charging speed. Chargers that do not comply with applicable national standards may be unsafe, with risk of death or injury, and may cause slow charging or product damage. Don't charge your phone in temperatures below -20°C (-4°F) or above 45°C (113°F). To view applicable standards and to learn more, see the "Legal information" section of this guide, or visit www.motorola.com/device-legal.

Warning about high volume usage. To prevent possible hearing damage, do not listen at high volume levels for long periods. When your headset volume reaches the high volume threshold, a warning shows. Tap **OK** to dismiss it, or wait one to five seconds, then press the Volume Up button to dismiss the alert and enable the volume to continue to be adjusted.

Disposal & recycling. Don't dispose of your battery or mobile device with your household waste. For help recycling products and

packaging responsibly, visit www.motorola.com/recycling. **Class 1 Laser.** This device is classified as a Class 1 Laser product, which is safe in normal use per IEC60825-1:2007 and IEC60825-1:2014. This device complies with 21 CFR 1040.10 and 1040.11, except for deviations pursuant to Laser Notice 50, dated June 24, 2007. Do not attempt to modify or disassemble.

CLASS 1 LASER PRODUCT

Extreme heat or cold. Don't use your phone in temperatures below -20°C (-4°F) or above 45°C (113°F). Don't store/transport your phone in temperatures below -20°C (-4°F) or above 60°C (140°F).

Legal disclaimers. Features, services and applications are network dependent and may not be available in all areas; additional terms/charges may apply. Product specifications and other information contained in this guide are believed to be accurate at the time of printing or release. Motorola reserves the right to correct or change any information without notice.

Arbitration. Your purchase is governed by a binding arbitration clause. For more information and how to opt-out, see the legal guide that came with your phone.

SAR information (on e-label). To view specific absorption rate (SAR) values for this phone, from the home screen swipe up and tap **Settings** > **Q**, then type **Regulatory labels**, from your phone's dialpad, type **#07#**, or visit www.motorola.com/sar.

Copyright & trademarks. MOTOROLA, the stylized M logo, MOTO, and the MOTO family of marks are trademarks or registered trademarks of Motorola Trademark Holdings, LLC. Google, Android, Google Play and other related marks and logos are trademarks of Google LLC. USB Type-C® and USB-C® are registered trademarks of USB Implementers Forum. All other product or service names are the property of their respective owners. © 2025 Motorola Mobility LLC. All rights reserved. Product ID: Model XT2551-6

