



USER GUIDE

USER GUIDE

MSI PEN 2

Content

Copyright and Trademarks Notice	1-4
Revision History	1-4
FCC-B Radio Frequency Interference Statement	1-5
FCC Conditions	1-5
FCC RF Radiation Exposure Statements	1-6
CE Conformity	1-7
Battery Regulations	1-7
WEEE Statement	1-8
Chemical Substances Information	1-8
RoHS Statement	1-9
Japan JIS C 0950 Material Declaration	1-9
India RoHS	1-9
Turkey EEE regulation	1-9
Ukraine restriction of hazardous substances	1-9
Vietnam RoHS	1-9

Introductions.....2-1

Unpacking	2-2
Product Overview	2-3
Product Dismantling Overview	2-5
Product Assembling Overview	2-7
Specifications	2-9

Getting Started.....3-1

How to Set Up Bluetooth Connection	3-2
Activating Bluetooth Connection	3-2
Begin to Use MSI Pen 2	3-4
Application	3-4
How to Set Up Customize Function	3-5
Access MSI Pen 2 Control Application	3-5
Begin to Manage MSI Pen 2 Battery	3-7

Copyright and Trademarks Notice

All marks and names mentioned may be trademarks of their respective owners. No warranty as to accuracy or completeness is expressed or implied. We reserves the right to make changes to this document without prior notice.

Revision History

- ▶ Version: 1.0
- ▶ Date: 11, 2022

FCC-B Radio Frequency Interference Statement



This equipment has been tested and found to comply with the limits for a Class B digital device, pursuant to part 15 of the FCC rules. These limits are designed to provide reasonable protection against harmful interference in a residential installation.

This equipment generates, uses and radiates radio frequency energy, and, if not installed and used in accordance with the instructions, may cause harmful interference to radio communications. However, there is no guarantee that interference will not occur in a particular installation. If this equipment does cause harmful interference to radio or television reception, which can be determined by turning the equipment off and on, the user is encouraged to try to correct the interference by one or more of the following measures:

- ▶ Reorient or relocate the receiving antenna.
- ▶ Increase the separation between the equipment and receiver.
- ▶ Connect the equipment into an outlet on a circuit different from that to which the receiver is connected.

NOTE

- ▶ The changes or modifications not expressly approved by the party responsible for compliance could void the user's authority to operate the equipment.
- ▶ Shield interface cables and AC power cord, if any, must be used in order to comply with the emission limits.

FCC Conditions

This device complies with part 15 of the FCC Rules. Operation is subject to the following two conditions:

- ▶ This device may not cause harmful interference.
- ▶ This device must accept any interference received, including interference that may cause undesired operation.

FCC RF Radiation Exposure Statements

The product comply with the FCC portable RF exposure limit set forth for an uncontrolled environment and are safe for intended operation as described in this manual. The further RF exposure reduction can be achieved if the product can be kept as far as possible from the user body or set the device to lower output power if such function is available.

Canada, Industry Canada (IC) Notices

This device complies with Industry Canada license exempt RSS standard(s).

This Class B digital apparatus complies with Canadian ICES-003 and CAN ICES-3(B)/NMB-3(B).

Operation is subject to the following two conditions:

(1) this device may not cause interference, and (2) this device must accept any interference, including interference that may cause undesired operation of the device. The IC ID for this device is xxxxx-xxxxxx.

This equipment complies with FCC radiation exposure limits set forth for an uncontrolled environment. End users must follow the specific operating instructions for satisfying RF exposure compliance. To maintain compliance with FCC exposure compliance requirement, please follow operation instruction as documented in this manual.

Canada, avis d'Industrie Canada (IC)

Cet appareil numérique de classe B est conforme aux normes canadiennes ICES-003 et RSS-247.

Son fonctionnement est soumis aux deux conditions suivantes: (1) cet appareil ne doit pas causer d'interférence et (2) cet appareil doit accepter toute interférence, notamment les interférences qui peuvent affecter son fonctionnement. L'identifiant IC de cet appareil est xxxxx-xxxxxx.

Cet équipement est conforme aux limites d'exposition aux radiations FCC établies pour un environnement non contrôlé. Les utilisateurs finaux doivent suivre les instructions d'utilisation spécifiques pour satisfaire la conformité à l'exposition aux RF. Pour maintenir la conformité aux exigences de conformité à l'exposition FCC, veuillez suivre les instructions de fonctionnement décrites dans ce manuel.

CE Conformity



This device is in compliance with the essential safety requirements and other relevant provisions set out in the European Directive.

Battery Regulations



European Union: Batteries, battery packs, and accumulators should not be disposed of as unsorted household waste. Please use the public collection system to return, recycle, or treat them in compliance with the local regulations.



廢電池請回收

BSMI: For better environmental protection, waste batteries should be collected separately for recycling or special disposal.

California, USA: The button cell battery may contain perchlorate material and requires special handling when recycled or disposed of in California.

For further information please visit: <http://www.dtsc.ca.gov/hazardouswaste/perchlorate/>

Safety Guideline for Using Lithium Battery

Danger of explosion if battery is incorrectly replaced. Replace only with the same or equivalent type recommended by the equipment manufacturer. Discard used batteries according to manufacturer's instructions.

WEEE Statement



European Union: Under the European Union ("EU") Directive on Waste Electrical and Electronic Equipment, Directive 2002/96/EC, which takes effect on August 13, 2005, products of "electrical and electronic equipment" cannot be discarded as municipal waste anymore and manufacturers of covered electronic equipment will be obligated to take back such products at the end of their useful life.

Chemical Substances Information

In compliance with chemical substances regulations, such as the EU REACH Regulation (Regulation EC No. 1907/2006 of the European Parliament and the Council), MSI provides the information of chemical substances in products at:

<https://csr.msi.com/global/index>

RoHS Statement

Japan JIS C 0950 Material Declaration

A Japanese regulatory requirement, defined by specification JIS C 0950, mandates that manufacturers provide material declarations for certain categories of electronic products offered for sale after July 1, 2006.

<https://csr.msi.com/global/Japan-JIS-C-0950-Material-Declarations>

<https://csr.msi.com/tw/Japan-JIS-C-0950-Material-Declarations>

India RoHS

This product complies with the "India E-waste (Management and Handling) Rule 2016" and prohibits use of lead, mercury, hexavalent chromium, polybrominated biphenyls or polybrominated diphenyl ethers in concentrations exceeding 0.1 weight % and 0.01 weight % for cadmium, except for the exemptions set in Schedule 2 of the Rule.

Turkey EEE regulation

Conforms to the EEE Regulations of the Republic Of Turkey.

Ukraine restriction of hazardous substances

The equipment complies with requirements of the Technical Regulation, approved by the Resolution of Cabinet of Ministry of Ukraine as of 10 March 2017, № 139, in terms of restrictions for the use of certain dangerous substances in electrical and electronic equipment.

Vietnam RoHS

As from December 1, 2012, all products manufactured by MSI comply with Circular 30/2011/TT-BCT temporarily regulating the permitted limits for a number of hazardous substances in electronic and electric products.

Introductions

Congratulations on becoming the owner of this MSI Pen, the finely designed MSI Pen 2. You will have a delightful and professional experience in using this exquisite MSI Pen 2. We are proud to tell users that this MSI Pen 2 is thoroughly tested and certified by our reputation for unsurpassed dependability and customer satisfaction.

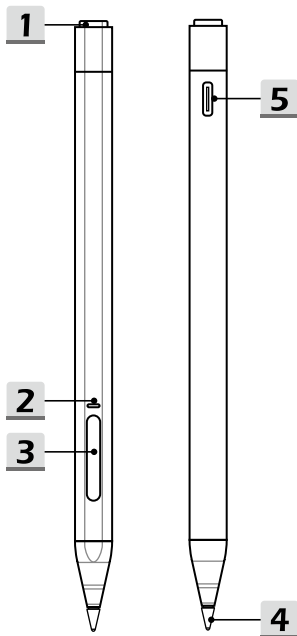
Unpacking

First, unpack the shipping carton and check all items carefully. If any item contained is damaged or missing, please contact your local dealer immediately. Also, keep the box and packing materials in case you need to ship the unit in the future. The package should contain the following items:

- ▶ MSI Pen 2
- ▶ USB Type C Cable
- ▶ Graphite Pen Lead
- ▶ POM Pen Tip

Product Overview

This section provides the description of basic aspects of MSI Pen 2. It will help you to know more about the appearance of MSI Pen 2 before using it. Please be aware that the figures shown here are for reference only.



1. **Bluetooth Button**

Please refer to "How to Set Up Bluetooth Connection " in chapter 3 for details of below application.

- Application on documentation:
User can write with MSI Pen 2 in document.
- Application on web page:
While browsing on web pages user can control with MSI Pen 2.
- Application on to call Microsoft OneNote and Whiteboard :
For business scenario, user can call out OneNote or Whiteboard.
- User customized function :
For more application setting of MSI Pen 2, please refer to "How to Set Up Customize Funtion" in chapter 3.
- Bluetooth function can automatically pair when MSI Pen 2 touches the screen.
- Haptic feedback is available when Bluetooth is paired.

2. **Battery Status LED**

Please refer to "Begin to Manage MSI Pen 2 Battery" in chapter 3 for details of below application.

- LED turns to green while the battery is fully charged status.
- LED glows red while the battery is being charged or in low capacity status.

3. **Eraser / Select Button**

In writing or drawing mode as eraser or selective pointer function .

4. **Pen Tip**

Packed with graphite pen tip and POM pen tip.

- ▶ NOTE: Do not twist pen nib, please pull out and insert pen tip straightly when replacing pen tip.

5. **USB Type C Port**

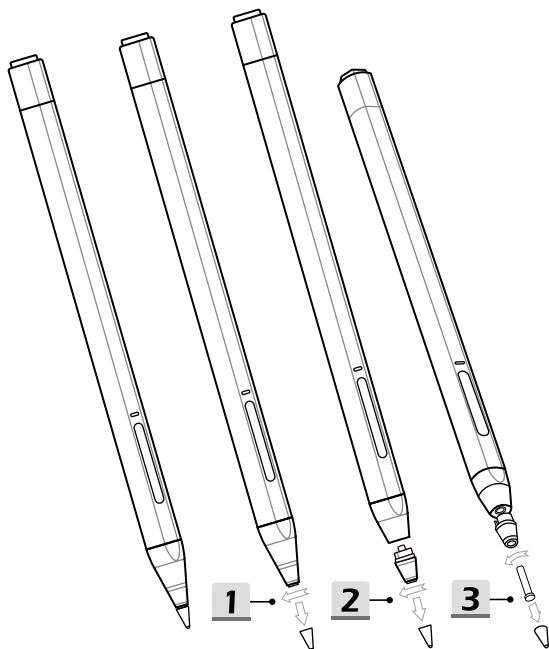
Compatible with all USB TypeC to supply power for the MSI Pen 2.

- ▶ NOTE: Please wake MSI Pen 2 from charging for first use.

Product Dismantling Overview

This section provides the description of dismantling MSI Pen 2.

Please be aware that the figures shown here are for reference only.



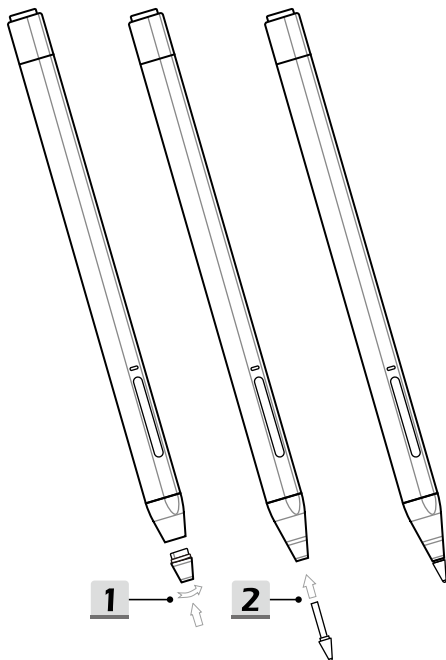
Refill the graphite lead of MSI Pen 2.

1. Please turn the cap counterclockwise to remove when the graphite lead is broken.
2. The root of the pen core will be pushed out when the pen cap is rotated counterclockwise.
3. The graphite lead will naturally slide off when the pen cap is loose.

Product Assembling Overview

This section provides the description of assembling MSI Pen 2.

Please be aware that the figures shown here are for reference only.



Introductions

1. Please turn the cap of MSI Pen 2 head clockwise into the pen body and turn it to the end when assembled.
2. The graphite lead can be reinserted to the full position after MSI Pen 2 cap is screwed into the pen clockwise.

Complete to refill and assemble MSI Pen 2 graphite lead.

Specifications

The specifications listed here is reference only, and may vary and change without notice.

Visit MSI official website at www.msi.com, or contact the local retailers to learn about the details of the product you purchased.

Physical Characteristic	
Dimension	151.82 mm x Φ 9.2 mm
Weight	14.52 g
I/O Port	
USB	1 x Type C
Communication Port	
Bluetooth	Supported
Extra Accessory	
Cable	1 x USB Type C
Pen Tip	<ul style="list-style-type: none">• 1 x Graphite Lead• 1 x POM

Introductions

Getting Started

How to Set Up Bluetooth Connection

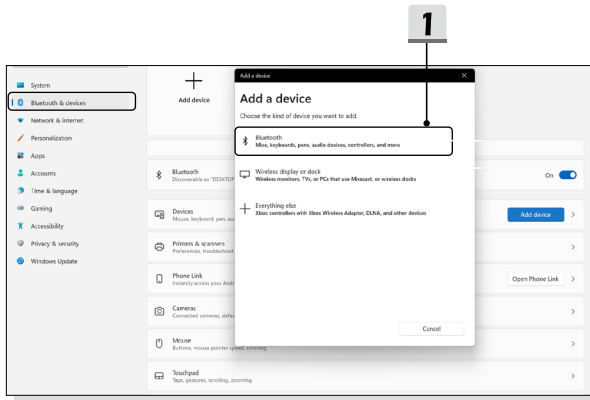
Bluetooth function can automatically pair when MSI Pen 2 touches the screen.

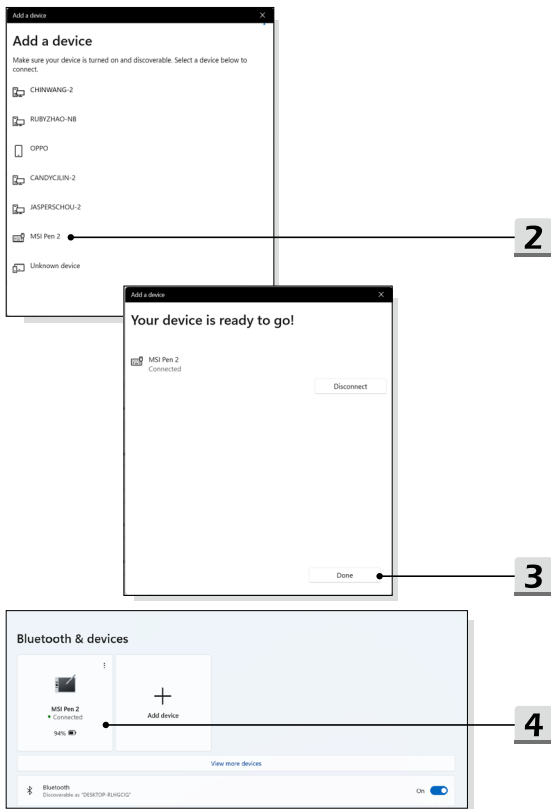
Activating Bluetooth Connection

- ▶ Checking the Bluetooth status

Before setting up a Bluetooth connection, it is a must to make sure that Airplane mode is turned off.

- Open up **Settings**, find and click [Devices] and select [Bluetooth & other devices] within the **Devices** selection menu.
 - Pairing the Bluetooth devices, please select MSI Pen 2.
 - Click [Done] to finish pairing MSI Pen 2.
-





Begin to Use MSI Pen 2

For a new user of MSI Pen 2, we would like to suggest you follow the illustrations below to begin to use the MSI Pen 2. By using a special double-etching process, MSI Pen 2 becomes a slim pencil appearance. Also, it well fine tunes a weights-balance, allowing users to hold it comfortably.

Application

- ▶ **Remote Control:** MSI Pen 2 is able to remotely control Microsoft Office : PowerPoint/Excel/PDF presentation and Web browsing for business scenario.
- ▶ **Quick APP Launch:** Microsoft Office: One Note for business scenario and Microsoft Office : White Board for creators.
- ▶ **Ink Level:** MSI Pen 2 can display the most significant thickness, this can benefit to note taking and drawing.
- ▶ **Portable:** MSI Pen 2 can attach to the laptop via its proper magnet to avoid getting lost and tip getting damaged.
- ▶ **Tilt Angle:** MSI Pen 2 can support up to the maximum 122 ° tilt for creators to sketch.
- ▶ **Operation Temperature:** MSI Pen 2 operation temperature is 10°C to 45°C.
- ▶ **Battery indicator:** MSI Pen 2 battery level will be on the task bar to let users well know the battery status.
- ▶ **Battery Life:** 32 hours continuously use from 100% full battery of writing mode.
- ▶ **Battery LED Indicator:** MSI Pen 2 battery lights red, means users can use within 5 minutes.

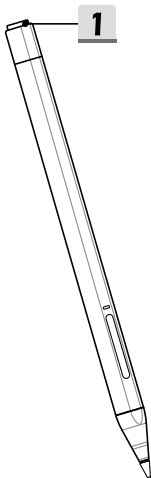
How to Set Up Customize Funtion

Customize your MSI Pen 2 function in "MSI Pen Control" Application.

Follow below instructions to login and set your own MSI Pen Bluetooth shortcut.

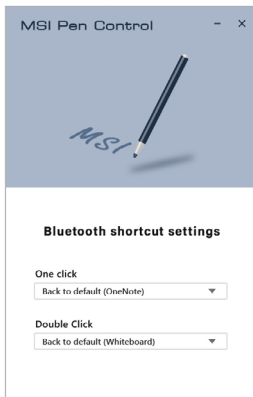
Access MSI Pen 2 Control Application

1. Long press 2 seconds of Bluetooth button to turn on customize application.
 2. Both **One Click** and **Double Click** can add optional function from [Application Defined].
 3. **One Click** default setting function is connected to [OneNote].
 4. **Double Click** default setting function is connected to [Whiteboard].
-

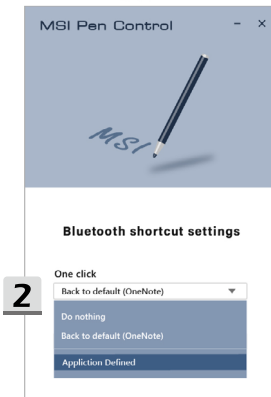


Getting Started

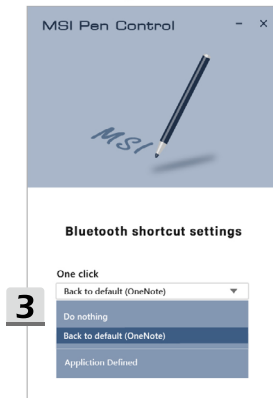
MSI Pen Control_main



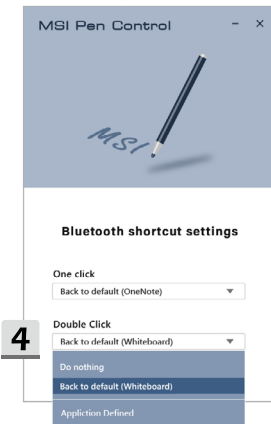
MSI Pen Control_Application Defined



MSI Pen Control_One Click



MSI Pen Control_Double click

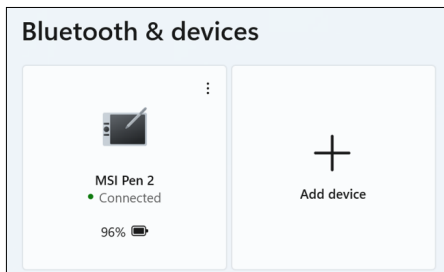


Begin to Manage MSI Pen 2 Battery

For user of MSI Pen 2, we would like to suggest you follow the illustrations below to begin to manage your MSI Pen battery.

Battery Indicator Application

- ▶ **Battery Indicator Level:** When users touche the screen with MSI Pen 2, the remaining battery power percentage of MSI Pen 2 will be displayed on the OS control panel.



NOTE: Battery Charged

- ▶ From 0% to 80% recharge : 20 minutes.
- ▶ From 0% to 100% recharge : 40 minutes.
- ▶ Charging for 5 minutes can continually write for 10.7 hours (only in writing mode)
- ▶ Charging for 10 minutes can continually write for 22.5 hours (only in writing mode)

msi[®]



MSI.COM



MSI
GLOBAL YOUTUBE



MSI
INSTAGRAM